

MODEL. I570-BI

Fanless Design Industrial Box PC



Introduction

I570-BI Series Industrial Box PC designed with a wide-voltage input and equipped with overvoltage and overcurrent protection. It offers multiple Processor options and supports Windows / Linux operating systems. The system features onboard Intel Core i3/i5/i7 processors from the 7th-13th generation. It supports 4G/5G internet connectivity to meet communication requirements (optional module required), as well as dual wireless communication via WiFi and Bluetooth (optional modules required). In addition, it provides 6 serial ports, including 4xRS-232 and 2xRS-232/422/485, ensuring full compatibility with a wide range of basic peripheral devices.



Specification

Mother Board Specification

Model	I570-BI		
CPU	Celeron J6412	i3: 7100U / 8130U / 10110U i5: 7200U / 7267U / 8250U / 10310U i7: 7500U / 8550U / 10710U	i3: 1115G4 / 1215U / 1315U i5: 11135G7 / 1235U / 1335U i7: 1195G7 / 1255U / 1270P / 1355U
Memory^[1]	2*DDR4 RAM Slots, Up to 32GB		
Storage	1*MSATA SSD Slot	1*M.2 NVME SSD Slot	
	1*SATA SSD Slot		
Display^[2]	1*HDMI: Resolution up to 4096*2304@24Hz + 1*VGA: Resolution up to 1920*1200@60Hz		
Expansion	2*Mini PCIE Slots Support 4G and WIFI module		2*M.2 Slots Support 4G / 5G and WIFI module
Ethernet	2*Intel i210V LAN Chip (10 / 100 / 1000 Mbps, RJ-45 Type)		
USB	4*USB 3.0 (Type-A) + 4*USB 2.0 (Type-A) + 1*USB 2.0 (Type-A, Built-in)		
COM	4*RS-232 / 422 / 485 (DB9 Type) + 2*RS-232 (DB9 Type)		
GPIO	14 ports GPIO (7*GPI+7*GPO, Phoenix Terminal Type)		
Audio	1*Line-In + 1*Line-Out		

Note:

[1]: The maximum memory capacity and the maximum capacity per strip supported by this motherboard depend on the CPU.

[2]: The maximum resolution and frame rate of the display interface output depends on the CPU.

Fittings Information

RAM	DDR4	4GB / 8GB / 16GB / 32GB
Storage	MSATA	64GB / 128GB / 256GB / 512GB / 1TB
	M.2 NVME	128GB / 256GB / 512GB / 1TB / 2TB / 4TB
	SATA	120GB / 128GB / 240GB / 256GB / 480GB / 512GB / 960GB / 1TB / 2TB / 4TB
GSM Module	4G	4G+GPS
	5G	5G+GPS
WIFI Module	7260AC / AX210	
CAN BUS Module	2*CAN BUS Ports	



Device Specification

BIOS	AMI UEFI BIOS
Power Input	DC 12V / 9-36V With Overvoltage Protection
	Support Auto-Start
	2 Pin Phoenix Terminal Type DC Plug
RTC	Support
Working Temperature	-20°C - 70°C , Support 24/7 Working
Storage Temperature	-30°C - 80°C
Humidity	90% (20±50°C)
Size	234mm*175mm*65mm
Structure	Fully Enclosed Aluminum Alloy Material
Heat dissipation	Fanless Design, Conduction Heat Dissipation
Installation	Desktop / Embedded / Wall-Mounted
System	Windows and Linux

Ordering Information

Model	CPU	LAN	USB	COM	Display	RAM	SSD	Expansion	Power
I570-BI	J6412	2	8	4*RS-232 422/485 2*RS-232	1*HDMI 1*VGA	2*DDR 4 Up to 32GB	1*MSATA 1*SATA	2*Mini PCIE	DC 9-36V
	7th / 8th					2*DDR 4 Up to 32GB	1*M.2 NVME 1*SATA		
	10th					2*DDR 4 Up to 64GB			
	11th / 12th / 13th					2*DDR 4 Up to 64GB	2*M.2		



CPU Information

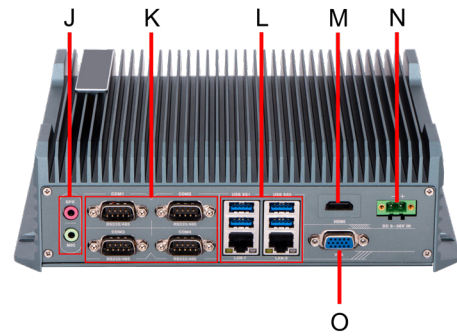
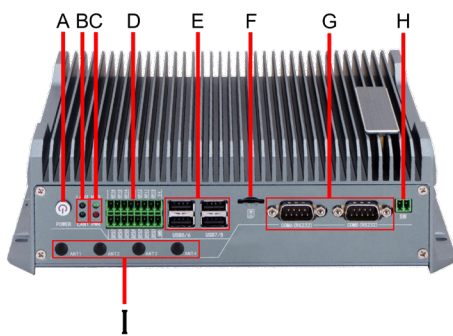
CPU	Core	Threads	Frequency	Cache	Graphics
J6412	4	4	2.00-2.60GHz	1.5 MB	UHD Graphics
i3-7100U	2	4	2.40GHz	3 MB	HD Graphics 620
i5-7200U	2	4	2.50-3.10GHz	3 MB	HD Graphics 620
i5-7267U	2	4	3.10-3.50GHz	4 MB	Iris® Plus Graphics 650
i7-7500U	2	4	2.70-3.50GHz	4 MB	HD Graphics 620
i3-8130U	2	4	2.20-3.40GHz	4 MB	UHD Graphics 620
i5-8250U	4	8	1.60-3.40GHz	6 MB	UHD Graphics 620
i7-8550U	4	8	1.80-4.00GHz	8 MB	UHD Graphics 620
i3-10110U	2	4	2.10-4.10GHz	4 MB	UHD Graphics
i5-10310U	4	8	1.70-4.40GHz	6 MB	UHD Graphics
i7-10710U	6	12	1.10-4.70GHz	12 MB	UHD Graphics
i3-1115G4	2	4	3.00-4.10GHz	6 MB	UHD Graphics
i5-1135G7	4	8	2.40-4.20GHz	8 MB	Iris Xe Graphics
i7-1195G7	4	8	2.90-5.00GHz	12 MB	Iris Xe Graphics
i3-1215U	6	8	1.20-4.40GHz	10 MB	UHD Graphics
i5-1235U	10	12	1.30-4.40GHz	12 MB	Iris Xe Graphics
i7-1255U	10	12	1.70-4.70GHz	12 MB	Iris Xe Graphics
i7-1270P	12	16	2.20-4.80GHz	18 MB	Iris Xe Graphics
i3-1315U	6	8	1.20-4.50GHz	10 MB	UHD Graphics
i5-1335U	10	12	1.30-4.60GHz	12 MB	Iris Xe Graphics
i7-1355U	10	12	1.70-5.00GHz	12 MB	Iris Xe Graphics



System Information

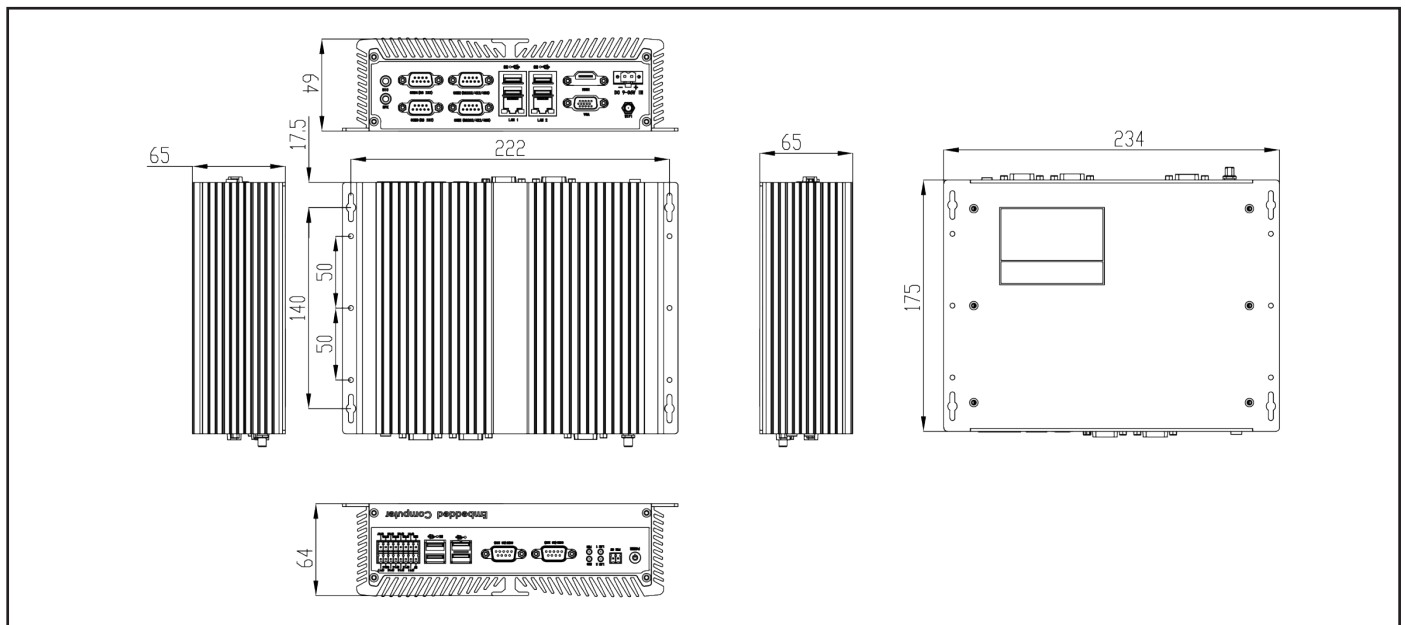
CPU	Specification
7th	Windows 7 / 10 and Linux
J6412 / 8th / 10th / 11th / 12th / 13th	Windows 10 / 11 and Linux

I/O Port



- A** : Power
- B** : LAN Poilct lamp
- C** : HDD/PWR Poilct lamp
- D** : GPIO
- E** : USB2.0
- F** : SIM
- G** : COM (RS-232)
- H** : Power Sw
- I** : ANT 1/2/3/4
- J** : SPK + MIC
- K** : COM (RS-232/422/485)
- L** : USB3.0 / LAN
- M** : HDMI
- N** : DC 9-36V IN
- O** : VGA

Dimensions



Package List

Adapter	1*12V 7A adapter
Power Cable	1*Power Cable (The type is depends on the national standard of the buyer)
Terminal	2 Pin phoenix terminal for Power Switch
Terminal-2	2*8 Pin phoenix terminal for GPIO

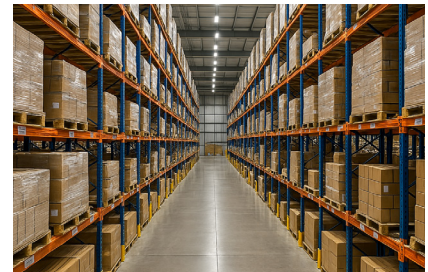
Applications



Industrial Factory



Industrial Robot



WareHouse

