



# MODEL. I510-BI

## Fanless Design Industrial Box PC



### Introduction

I510-BI series Industrial Box PC is an industrial machine with small size, powerful functions and excellent performance. The rugged design ensures the product is strong and durable and can withstand harsh environments. It uses high-performance Intel processors, supports Core i3,i5,i7 Gen-4/6/7/8/10th processors, and has efficient processing capabilities to meet users' pursuit of performance. I510-BI supports desktop / embedded / wall / rail-mounted installation methods, it can meet the needs of customers in different industries.



# Specification

## Mother Board Specification

<b>Model</b>	I510-BI	
<b>CPU</b>	J1900 i5-4260U	J6412 i3-7100U i5-6200U / 7200U / 8260U / 10210U i7-7500U / 10610U
<b>Memory <sup>[1]</sup></b>	1*DDR3 RAM Slot, Up to 8GB	1*DDR4 RAM Slot, Up to 16GB
<b>Storage</b>	1*MSATA SSD Slot	
<b>Display <sup>[2]</sup></b>	1*HDMI: Resolution up to 4096*2304@24Hz + 1*DP: Resolution up to 4096*2304@60Hz	
<b>Expansion</b>	1*Mini PCIE Slot, Support 4G and WIFI module	
<b>Ethernet</b>	3*Intel i211V LAN Chip (10 / 100 / 1000 Mbps, RJ-45 Type)	
<b>USB</b>	4*USB 3.0 (Type-A)	
<b>COM</b>	2*RS-232 + 2*RS-485 / 422 / 232 (Phoenix type)	
<b>GPIO</b>	8 ports GPIO (4*GPI+4*GPO, Phoenix Terminal Type)	

### Note:

[1]: The maximum memory capacity and the maximum capacity per strip supported by this motherboard depend on the CPU.

[2]: The maximum resolution and frame rate of the display interface output depends on the CPU.

## Fittings Information

<b>RAM</b>	DDR3	4GB / 8GB
	DDR4	4GB / 8GB / 16GB / 32GB
<b>Storage</b>	SATA	64GB / 128GB / 256GB / 512GB / 1TB
<b>GSM Module</b>	4G	4G+GPS
<b>WIFI Module</b>	7260AN / 7260AC / AX210	



## Device Specification

BIOS	AMI UEFI BIOS
Power Input	DC 9-36V, Overvoltage Protection
	Support Auto-Start
	3 Pin Phoenix terminal type DC plug
RTC	Support
Working Temperature	-20°C - 70°C , Support 24/7 Working
Storage Temperature	-30°C - 80°C
Humidity	90% (20±50°C)
Size	260mm*150mm*65mm
Structure	Fully Enclosed Aluminum Alloy Material
Heat dissipation	Fanless Design, Conduction Heat Dissipation
Installation	Desktop / Embedded / Wall-Mounted
System	Windows and Linux

## Ordering Information

Model	CPU	LAN	USB	COM	Display	RAM	SSD	Expansion	Power
I510-BI	J1900 / 4th	3	4	2*RS-232 422/485 2*RS-232	1*HDMI 1*DP	1*DDR 3 Up to 8GB	1*MSATA	1*Mini PCIE	DC 9-36V
	J6412 6th / 7th					1*DDR 4 Up to 16GB			
	8th / 10th					1*DDR 4 Up to 32GB			



## CPU Information

CPU	Core	Threads	Frequency	Cache	Graphics
J1900	4	4	2.00-2.42GHz	2MB	HD Graphics
J6412	4	4	2.00-2.60GHz	1.5 MB	UHD Graphics
i5-4260U	2	4	1.40-2.70GHz	3 MB	HD Graphics 5000
i5-6200U	2	4	2.30-2.80GHz	3 MB	HD Graphics 520
i3-7100U	2	4	2.40GHz	3 MB	HD Graphics 620
i5-7200U	2	4	2.50-3.10GHz	3 MB	HD Graphics 620
i7-7500U	2	4	2.70-3.50GHz	4 MB	HD Graphics 620
i5-8260U	4	8	1.60-3.90GHz	6 MB	UHD Graphics 620
i5-10210U	4	8	1.60-4.20GHz	6 MB	UHD Graphics
i7-10610U	4	8	1.80-4.90 GHz	8 MB	UHD Graphics

## System Information

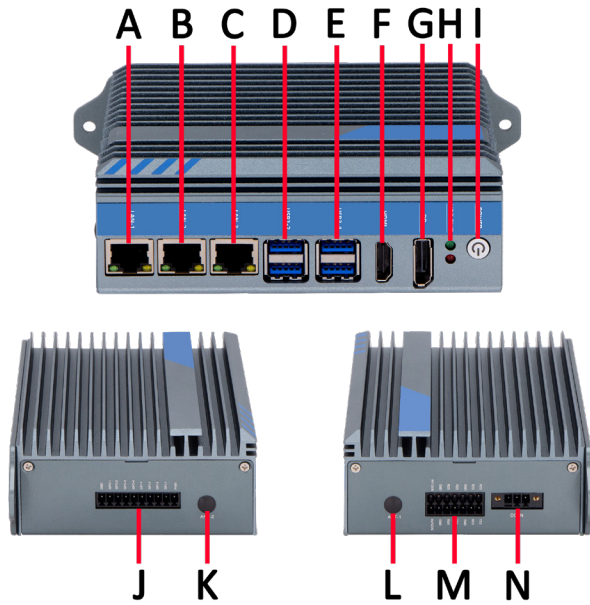
CPU	Specification
J1900 / 4th / 6th / 7th	Windows 7 / 10 and Linux
J6412 / 8th / 10th	Windows 10 / 11 and Linux

## Package List

Adapter	1*12V 5A Adapter
Power Cable	1*Power Cable (The type is depends on the national standard of the buyer)
Terminal	1*10 Pin phoenix terminal for GPIO
Terminal	1*14 Pin phoenix terminal for COM

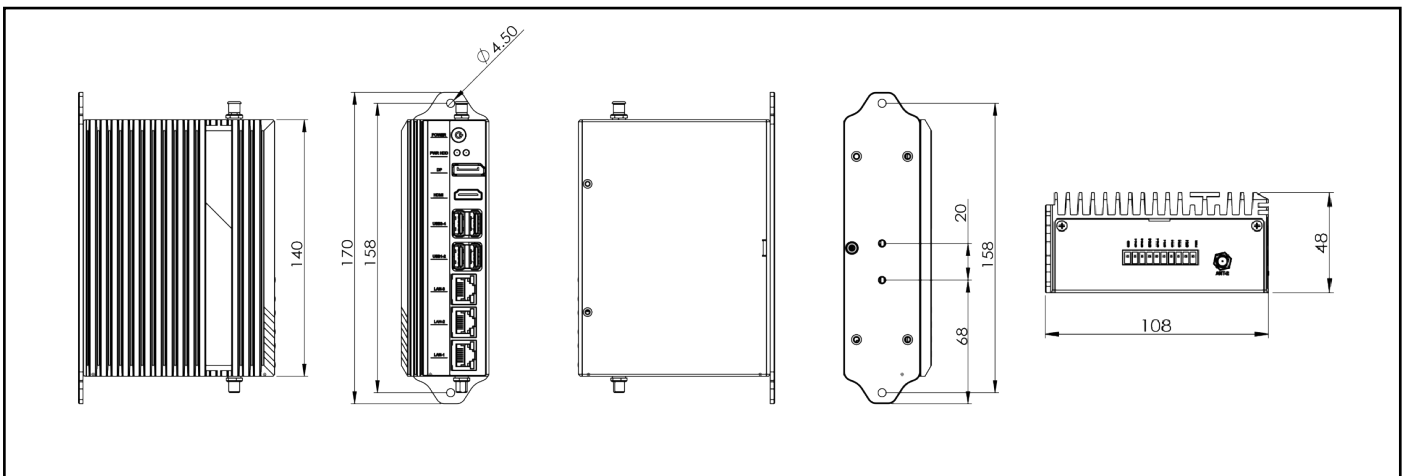


## I/O Port



- A : LAN
- B : LAN
- C : LAN
- D : USB 3.0
- E : USB 3.0
- F : HDMI
- G : DP
- H : PWR HDD
- I : POWER
- J : GPIO
- K : ANTENNA
- L : ANTENNA
- M : COM
- N : DC IN

## Dimensions



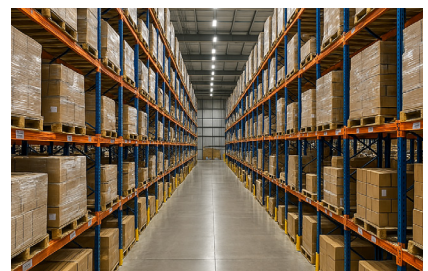
## Applications



**Industrial Factory**



**Industrial Robot**



**WareHouse**

