



MODEL. I500-BI

Fanless Design Industrial Box PC



Introduction

I500-BI series Industrial Box PC is an industrial computer equipped with powerful functionality, extensive expandability, and excellent performance. Its rugged design ensures a robust and durable chassis, suitable for demanding environments. Equipped with high-performance Intel processors supporting 13th generation Core processors, it delivers efficient processing power to meet users' performance demands. Furthermore, The I500-BI supports various expansion modules, such as GMS and Wi-Fi expansion, to cater to diverse user needs.

Specification

Mother Board Specification

Model	I500-BI
CPU	i7-1355U
Memory^[1]	2*DDR5 RAM slot, up to 64GB
Storage	1*MSATA SSD Slot 1*M.2 NVME SSD Slot 1*SATA SSD Slot
Display	1*HDMI: Resolution up to 4096*2304@60Hz 1*VGA: Resolution up to 1920*1200@60Hz
Expansion	1*Mini PCIE + 1*M.2 Slots Support 4G/5G and WIFI module
Ethernet	2*Intel i225V LAN Chip (10 / 100 / 1000 / 2500 Mbps, RJ-45 Type)
USB	4*USB 3.0 + 2*USB 2.0 (Type-A)
COM	2*RS-232 / 422 / 485 (DB9 Type) + 4*RS-232 (DB9 Type)
Audio	1*Line-In + 1*Line-Out
GPIO	14 ports GPIO (7*GPI+7*GPO, Phoenix Terminal Type)

Note:

[1]: The maximum memory capacity and the maximum capacity per strip supported by this motherboard depend on the CPU.

Fittings Information

RAM	DDR5	4GB / 8GB / 16GB / 32GB / 48GB
Storage	M.2 NVME	128GB / 256GB / 512GB / 1TB / 2TB / 4TB
	MSATA	64GB / 128GB / 256GB / 512GB / 1TB
	SATA	120GB / 128GB / 240GB / 256GB / 480GB / 512GB / 960GB / 1TB / 2TB / 4TB
GSM Module	4G	4G+GPS
	5G	5G+GPS
WIFI Module	7260AC / AX210	



Device Specification

BIOS	AMI UEFI BIOS
Power Input	DC 9-36V, Overvoltage Protection
	Support Auto-Start
	3 Pin Phoenix terminal type DC plug
RTC	Support
Working Temperature	-20°C - 70°C , Support 24/7 Working
Storage Temperature	-30°C - 80°C
Humidity	90% (20±50°C)
Size	236mm*157mm*72mm
Structure	Fully Enclosed Aluminum Alloy Material
Heat dissipation	Fanless Design, Conduction Heat Dissipation
Installation	Desktop / Embedded / Wall Mount
System	Windows and Linux

Ordering Information

Model	CPU	LAN	USB	COM	Display	RAM	SSD	Expansion	Power
I500-BI	13th	2	6	4*RS-232 2*RS- 232/422/485	1*HDMI 1*VGA	2*DDR 5 Up to 96GB	1*M.2 NVME 1*MSATA 1*SATA	2*M.2	DC 9-36V



CPU Information

CPU	i7-1355U
Core	10
Threads	12
Frequency	1.7-5.0GHz
Cache	12MB
Graphics	Iris Xe Graphics

System Information

CPU	Specification
13th	Windows 10 / 11 and Linux

I/O Port



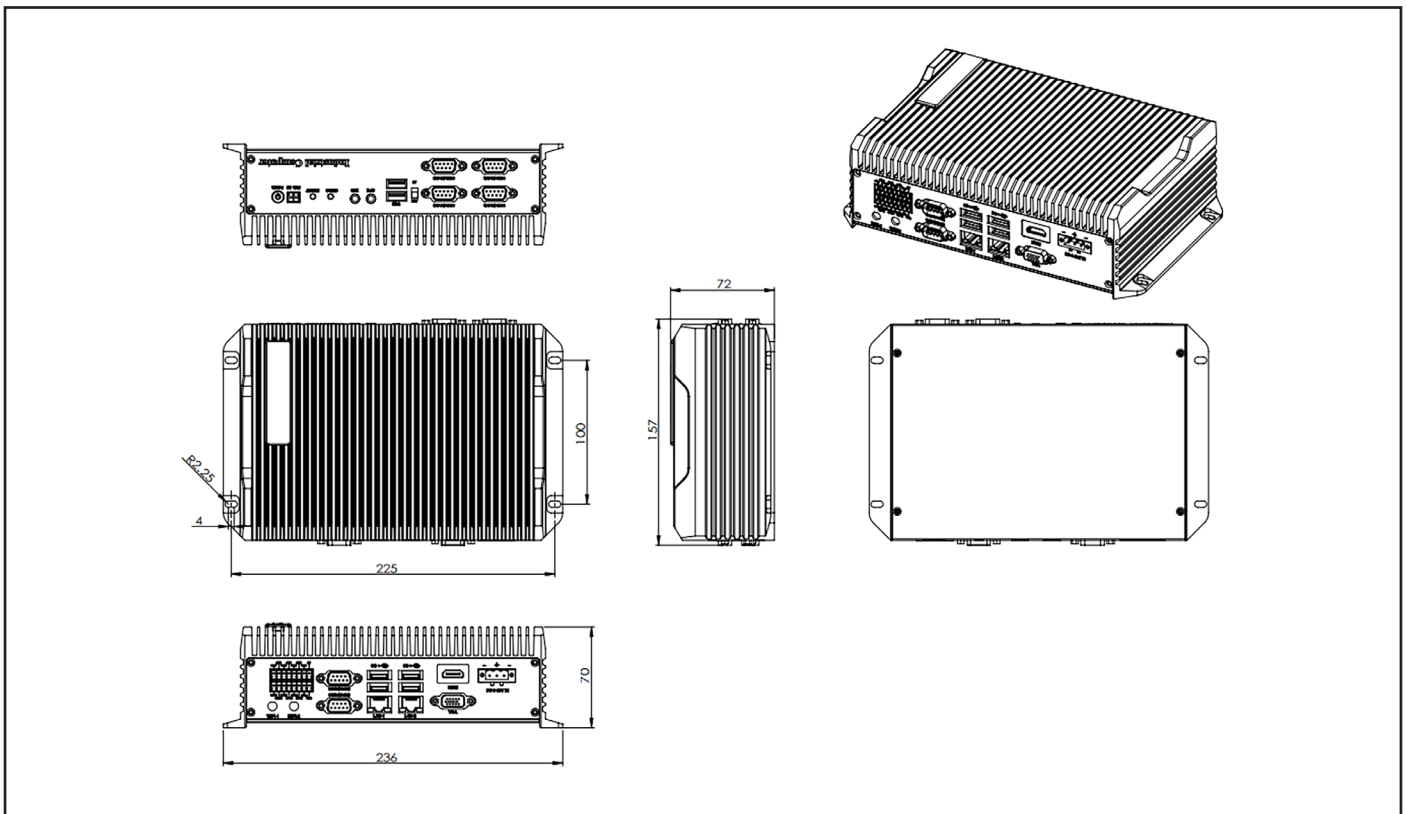
- A : COM1-4 (RS232)
- E : MIC
- I : POWER
- M : HDMI
- B : ATX / AT
- F : CMOS
- J : GPIO
- N : DC 9-36V IN
- C : USB2.0
- G : RESET
- K : COM5-6 (RS232)
- O : ANT1-2
- D : SPK
- H : POWER SW
- L : USB3.0/LAN
- P : VGA



Package List

Adapter	1*12V 7A adapter
Power Cable	1*Power Cable (The type is depends on the national standard of the buyer)
Terminal	2 Pin Phoenix Terminal For Power Switch
Terminal	16 Pin phoenix terminal for GPIO

Dimensions



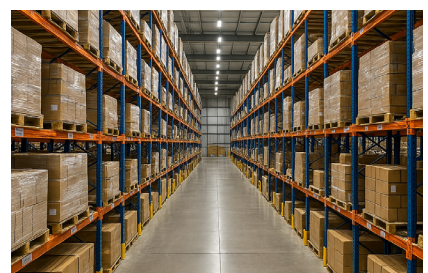
Applications



Industrial Factory



Industrial Robot



WareHouse

