

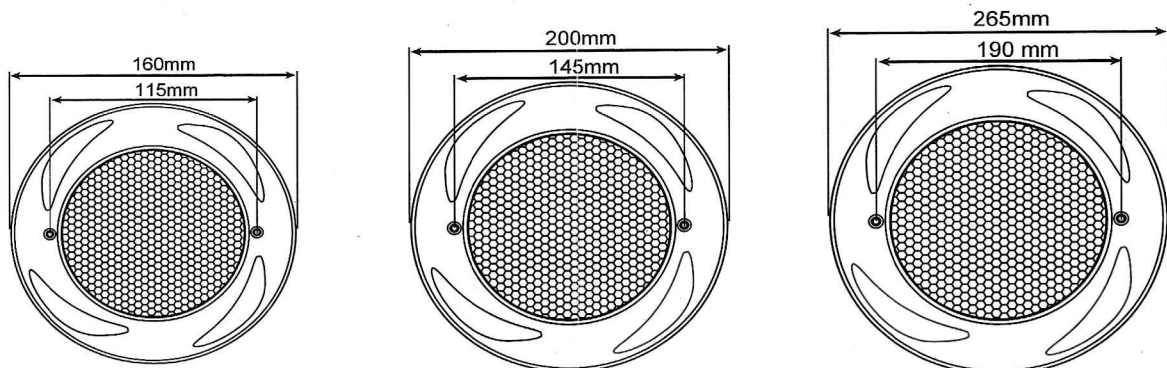
LED POOL LIGHT



PARAMETER

ITEM	VOLTAGE	POWER	LED QTY	LED SOURCE	COLOR	IP GRADE	SIZE
160AC	AC 12V	18W	252PCS	SMD2835	single color RGB/RGBW	PC	Ø160*22MM
200AC	AC 12V	18W	252PCS				Ø200*25 MM
		24W	333PCS				
260AC	AC 12V	18W	252PCS				Ø265*22MM
		24W	333PCS				
		30W	441PCS				

Dimensional Drawing



Structure Chart



POOL LIGHT



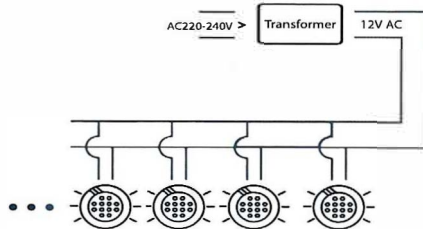
316SS SCREW



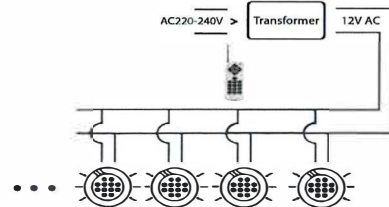
PC HANGING BOARD

Connection Diagram

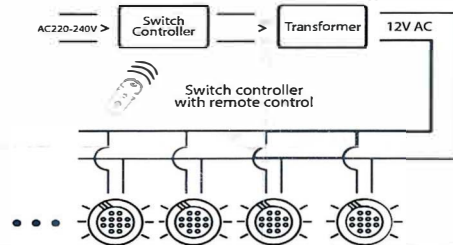
1. Single color/Switch on off /Automatic changing



2. Remote Control



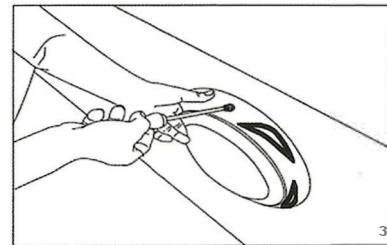
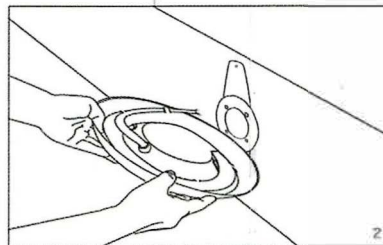
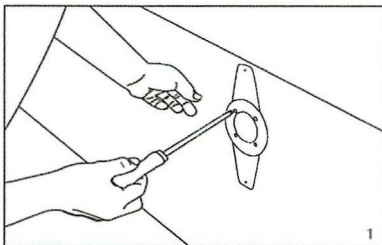
3. Switch Control with Remote Control



Installation Drawing

1. Make two small holes in the wall

2. Put 2 pieces screw into the wall and fix it



Safety Warning

- Only a licensed or certificated electrician or a qualified serviceman is allowed to install or maintain this product.
- Must be installed in accordance to the requirements of your government standard or local authorities.
- Never handle it with wet hands and feet.
- This light is design for use only when fully submerged in water.
- Never operate this light for more than 30 seconds unless it is totally submerged in wiaer.
- All lights are required to be disconnected from the main electricity before any operation of maintenance.