



# Network Infrastructure

Product Catalogue



# TABLE of CONTENT

## OVERVIEW

Panduit Overview

Market Solutions

## COPPER CABLE SYSTEM

Copper Cat6 Solutions	2
Copper Cat6A Solutions	18
Copper Tools	35

## FIBER OPTIC SYSTEM

Fiber Optic Solutions	41
MPO Solutions	65

## RACK & CABINET SYSTEM

Cabinet	73
Rack Solutions	74
Wall Mount	83

## CABLE MANAGEMENT SYSTEM

Fiber Runner	87
Wire Basket	109

## POWER DISTRIBUTION UNITS (PDU)

Basic Series	125
MI Series	126
MSPO Series	127

## Panduit Overview

---

Physical infrastructure is a strategic foundation that can help futureproof your business. Panduit's industrial electrical and network infrastructure ensures smart, scalable, and efficient connectivity solutions across the enterprise to help you compete and succeed in a constantly evolving global marketplace.

### **Network and Electrical Infrastructure: Your key to staying connected**

Dependable, scalable network connectivity and robust, reliable electrical infrastructure are now mission-critical for modern enterprises. Good thing Panduit's innovative infrastructure solutions enable the future-forward connectivity that global enterprises need to make more meaningful connections – and thrive.

## Market Solutions

---

### **Network Infrastructure**

Today's networks support ever-expanding converged applications for voice, data, and video, as well as functions such as intelligent lighting, security, safety systems, and more. Panduit™ provides the industry's most comprehensive and holistic portfolio of products and services that enable sustainable, energy-efficient enterprises. Innovative design features provide easy installation, reduced maintenance costs, and improved network reliability and flexibility. This catalog features the preferred offering for both physical infrastructure and the intelligence to solve the most challenging business problems customers face as they connect multiple systems that span from the Enterprise to the Data Center and across the Manufacturing floor. For the complete offering, please contact your local Panduit representative or visit us at [www.panduit.com](http://www.panduit.com).

# Infrastructure for a Connected World



ROYALTEC



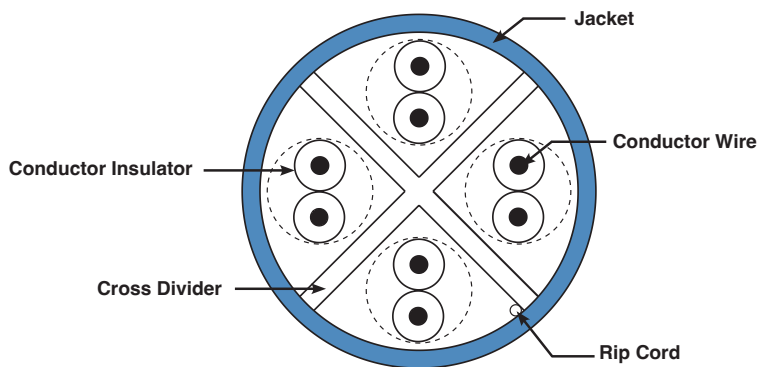
# Copper CABLING SYSTEM

## Netkey® Cat6 Copper Cable

### NK6™ U/UTP Copper Cable

Is a component of the Panduit NK6™ U/UTP Copper Cabling System. This end-to-end system provides Gigabit Ethernet performance with usable bandwidth beyond 250MHz. With certified performance the ISO 11801 Class E and ANSI/TIA-568-C.2 Category 6 standards, this system will support the following applications:

- Ethernet 10BASE-T
- 100BASE-T (Fast Ethernet)
- 1000BASE-T (Gigabit Ethernet)



**NUL6C04\*\***



COLOR ● ○ ●

Part No.	Color
NUL6C04IG	Intl. Gray
NUL6C04BU	Blue
NUL6C04WH	White



**NUC6C04\*\***



COLOR ● ○ ●

Part No.	Color
NUC6C04IG	Intl. Gray
NUC6C04BU	Blue
NUC6C04WH	White

### Standard

- UL 1685 , EN50575: Euroclass Eca
- IEEE 802.3af, IEEE 802.3at
- IEEE 802.3bt for PoE applications
- ANSI/TIA-568.2-D

### Descriptions

110 N (25 lbf) maximum installation tension  
 0°C to 50°C during installation  
 -20°C to 75°C during operation  
 Cable diameter 5.7mm, 5.6mm  
 Cable weight 12 kg/305m  
 Operating Voltage, Maximum 80 V

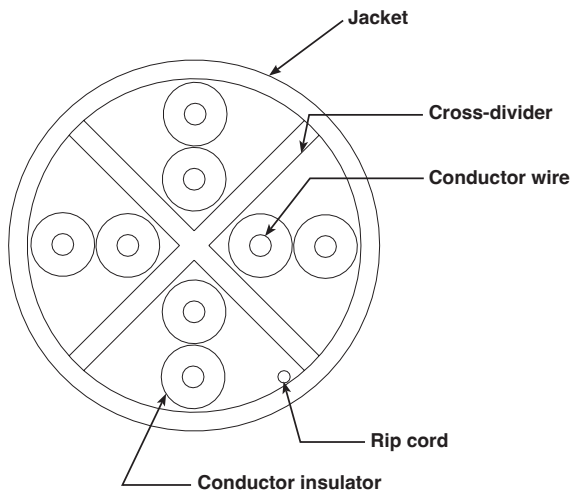
\*\* Color of jacket

## PANNET® Cat6 Copper Cable

### Panduit TX6™ Cabling System

Interoperable and backward compatible, the Panduit TX6™ Cabling System provides design flexibility to protect network investments well into the future. With certified performance to the ANSI/TIA-568-C.2 Category 6 and ISO 11801 Class E standards, this system will support the following applications:

- Ethernet 10BASE-T, 100BASE-T (Fast Ethernet), 1000BASE-T (Gigabit Ethernet)
- 10GBASE-T (10 Gigabit Ethernet over limited distances as specified in the industry)
- 10GBASE-T standards)
- 155 Mb/s ATM, 622 Mb/s ATM, 1.2 Gb/s ATM
- Token Ring 4/16



### PUL6004\*\*



COLOR

Part No.	Color
PUL6004BU	Blue
PUL6004WH	White

### Standard

- IEC 60332-1, IEC 60332-3-22
- IEC 60754-1 and -2, IEC 61034-2
- EN50575: Euroclass Dca-s2, d2, a1
- IEEE 802.3af, IEEE 802.3at and IEEE 802.3bt

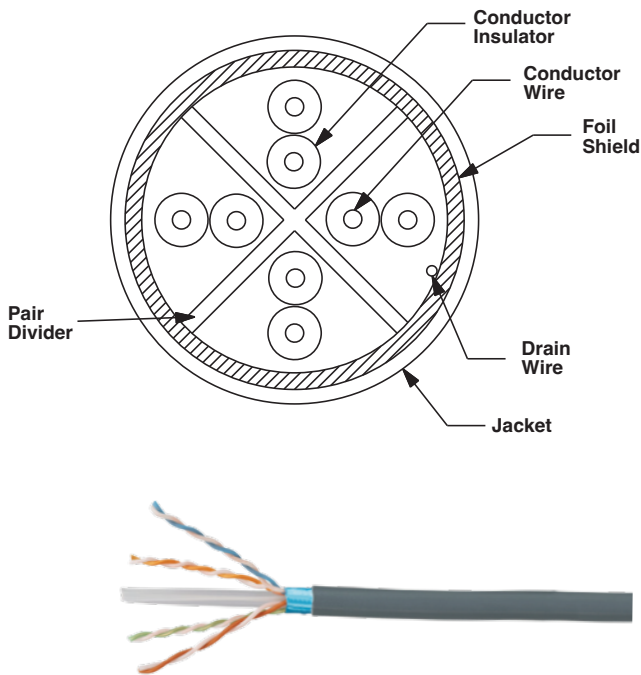
### Descriptions

110 N (25 lbf) maximum installation tension  
 0°C to 50°C during installation  
 -20°C to 60°C during operation  
 Cable diameter 5.7 mm  
 Cable weight 12 kg/305m  
 Operating Voltage, Maximum 80 V

\*\* Color of jacket



## PANNET® Cat6 Copper Cable



### PFL6004BU



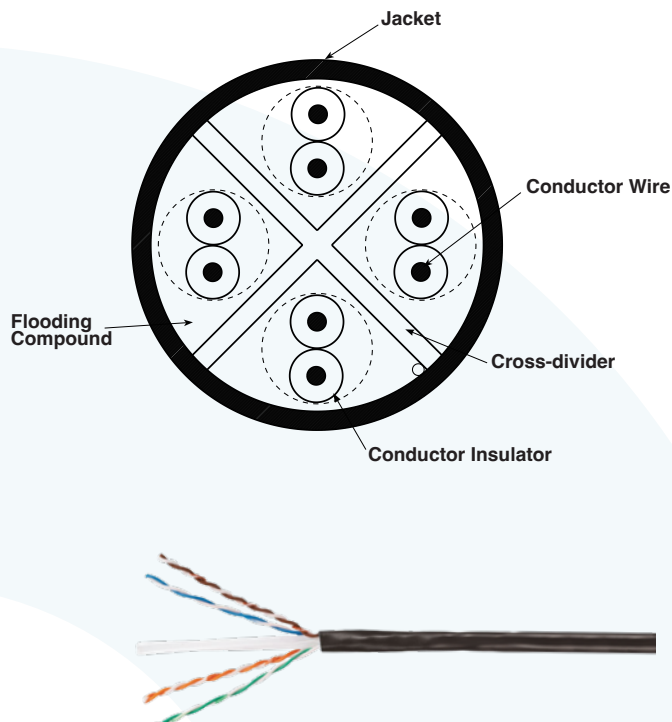
COLOR ●

#### Standard

- ANSI/TIA-568-C.2 , ISO 11801 Class E
- LSZH – IEC 60332-1, IEC 60754-1
- IEC 60754-2, IEC 61034-2
- IEEE 802.3af and IEEE 802.3at for PoE applications

#### Descriptions

110 N (25 lbf) maximum installation tension  
 0°C to 50°C during installation  
 -20°C to 75°C during operation  
 Cable diameter 7.5mm  
 Cable weight 15 kg/305m  
 Operating Voltage, Maximum 80 V  
 Ultimate Breaking Strength >400 N (90 lbf)



### PUO6C04BL



COLOR ●

#### Standard

- ANSI/TIA-568.2-D Category 6 and ISO 11801 Class E; IEC 60794-1-2F5
- Method B Water Prevention Requirement
- EN50575: Euroclass Fca
- IEEE 802.3af, IEEE 802.3at and IEEE 802.3bt

#### Descriptions

110 N (25 lbf) maximum installation tension  
 -30°C to 60°C during installation  
 -40°C to 80°C during operation  
 Black UV-resistant and abrasion-resistant Cable jacket  
 Cable diameter 6.7mm  
 Cable weight 17.9 kg/305m  
 Operating Voltage, Maximum 80 V

## Netkey® Cat6 Copper Accessories

### Modular Jack



#### NK688M\*\*

NetKey Cat6 Punchdown Jack



Part No.	Color
NK688MAW	arctic white
NK688MBL	Black
NK688MBU	Blue
NK688MEI	Electric Ivory
NK688MGR	Green
NK688MIG	Intl. Gray
NK688MOR	Orange
NK688MRD	Red
NK688MVL	Violet
NK688MWH	White
NK688MYL	Yellow
NK688MIW	Off White

#### The NetKey® Cat6 UTP RJ45 Punchdown Keystone Jack Module

is designed to terminate 4-pair, 22-26 AWG twisted pair cable. Each module is 100% factory tested to exceed industry standard performance requirements. Contacts are plated with 50 microinches of gold for superior performance. Jack modules are individually serialized for traceability and are compatible with keystone interfaces including NetKey® Faceplates, Modular Patch Panels, and Surface Mount Boxes.

#### Descriptions

<b>Product Type</b>	: Jack Module
<b>Performance Level</b>	: Category 6
<b>Connector Type</b>	: Jack Module - Standard
<b>Termination Style</b>	: Punchdown
<b>Body Material</b>	: Polycarbonate
<b>Contact Material</b>	: Plated Phosphor Bronze
<b>Module Type</b>	: Keystone
<b>Wiring Scheme</b>	: T568A/T568B
<b>Shield Type</b>	: Unshielded (UTP)
<b>Minimum Operating Temperature</b>	: -10 °C to 75 °C
<b>PoE and PoH compliance</b>	: Meets IEEE 802.3af/802.3at and 802.3bt type 3 and type 4 Supports Power over HDBaseT up to 100 watts
<b>IEC compliance</b>	: Meets IEC 60603-7 and IEC 60512-99-002

\*\* Color of Module

## Netkey® Cat6 Copper Accessories

### Faceplate



#### NK\*FIWY

NetKey® Faceplate

Part No.	Port
NK1FIWY	1-port
NK2FIWY	2-port
NK4FIWY	4-port
NK6FIWY	6-port

#### The NetKey® Faceplate

accepts one keystone module. The faceplate is single gang and mounts to a NEMA standard single gang opening. The faceplate includes a label pocket for easy identification

#### Descriptions

<b>Module Type</b>	: Keystone
<b>Number of Ports</b>	: 1 , 2 , 4 , 6
<b>Category</b>	: CAT 6 , 6A
<b>Material</b>	: ABS
<b>Color</b>	: Off White
<b>Identification Type</b>	: Label Pocket
<b>Outlet Orientation</b>	: Flat
<b>Gang Opening Type</b>	: Single Gang
<b>Mount Orientation</b>	: Vertical
<b>Standards Met</b>	: RoHS Compliant

### Faceplate Shuttered



#### NKFPL86F\*SAW

NetKey® Shuttered Faceplate

Part No.	Port
NKFPL86F1SAW	1-port
NKFPL86F2SAW	2-port
NKFPL86F4SAW	4-port

#### The NetKey® 86mm x 86mm Faceplate.

The faceplate is flat and shuttered to protect modules from dust and debris. A two-piece design conceals the two M4.0-0.7x25mm panhead mounting screws. The faceplate includes a label pocket and icon slots for easy identification

#### Descriptions

<b>Module Type</b>	: Keystone
<b>Number of Ports</b>	: 1 , 2 , 4
<b>Category</b>	: CAT 6 , 6A
<b>Material</b>	: ABS
<b>Color</b>	: Arctic White
<b>Identification Type</b>	: Label Pocket
<b>Outlet Orientation</b>	: Flat/Shuttered
<b>Gang Opening Type</b>	: Single Gang
<b>Mount Orientation</b>	: Vertical
<b>Standards Met</b>	: RoHS Compliant

\* Number of ports

## Netkey® Cat6 Copper Accessories

### Patch Cord



**NKU6PC\*M\*\***

NetKey® Cat6 UTP Patch Cord



### The NetKey® Cat6 UTP Patch Cord

is constructed of 24 AWG, unshielded, twisted pair, stranded, CM cable with modular plugs.

### Descriptions

<b>Cable Construction</b>	: U/UTP
<b>Performance Level</b>	: Category 6
<b>Conductor Gauge</b>	: 24 AWG
<b>Patch Cord Type</b>	: Unshielded
<b>Plug Housing Material</b>	: Polycarbonate
<b>Jacket Material</b>	: Polyvinyl Chloride
<b>Cable Outside Diameter</b>	: 5.8 mm
<b>Wiring Scheme</b>	: T568B
<b>Operating Temperature</b>	: -10°C to 60 °C
<b>Flammability Rating</b>	: CM
<b>IEC Variant</b>	: 60603-7
<b>PoE Compatibility</b>	: PoE/PoE+/PoE++

Part No.	Color
<b>Cable Length 1 Meter</b>	
NKU6PC1MBU	Blue
NKU6PC1MBL	Black
NKU6PC1M	Off White
NKU6PC1MGR	Green
NKU6PC1MRD	Red
NKU6PC1MYL	Yellow

Part No.	Color
<b>Cable Length 2 Meters</b>	
NKU6PC2MBU	Blue
NKU6PC2MBL	Black
NKU6PC2M	Off White
NKU6PC2MGR	Green
NKU6PC2MRD	Red
NKU6PC2MYL	Yellow

Part No.	Color
<b>Cable Length 3 Meters</b>	
NKU6PC3MBU	Blue
NKU6PC3MBL	Black
NKU6PC3M	Off White
NKU6PC3MGR	Green
NKU6PC3MRD	Red
NKU6PC3MYL	Yellow

Part No.	Color
<b>Cable Length 5 Meters</b>	
NKU6PC5MBU	Blue
NKU6PC5MBL	Black
NKU6PC5M	Off White
NKU6PC5MGR	Green
NKU6PC5MRD	Red
NKU6PC5MYL	Yellow

Part No.	Color
<b>Cable Length 10 Meters</b>	
NKU6PC10MBU	Blue
NKU6PC10MBL	Black
NKU6PC10M	White
NKU6PC10MGR	Green
NKU6PC10MRD	Red
NKU6PC10MYL	Yellow

\* Cable Length  
\*\* Color of Module

## Netkey® Cat6 Copper Accessories

### Patch Cord Shielded



**S6PC\*M\*\***

NetKey® Shielded Cat6 S/FTP Patch Cord



### The shielded Cat6 Patch Cord

is constructed of 26 AWG, twisted pair, stranded, LSZH cable with modular plugs. Includes integral pair manager and tangle free latch to prevent snags. The patch cord's slender strain relief boot provides easy access in high-density applications.

### Descriptions

<b>Cable Construction</b>	: S/FTP
<b>Performance Level</b>	: Category 6
<b>Conductor Gauge</b>	: 26 AWG
<b>Patch Cord Type</b>	: Shielded
<b>Plug Housing Material</b>	: Polycarbonate
<b>Jacket Material</b>	: Polyvinyl Chloride
<b>Cable Outside Diameter</b>	: 5.9 mm
<b>Wiring Scheme</b>	: T568B
<b>Operating Temperature</b>	: -10°C to 60 °C
<b>Flammability Rating</b>	: LSZH
<b>IEC Variant</b>	: 60603-7
<b>PoE Compatibility</b>	: PoE/PoE+/PoE++

#### Cable Length 1 Meter

Part No.	Color
S6PC1MBU	Blue
S6PC1MIG	Intl. Gray

#### Cable Length 3 Meters

Part No.	Color
S6PC3MBU	Blue
S6PC3MIG	Intl. Gray

#### Cable Length 10 Meters

Part No.	Color
S6PC10MBU	Blue
S6PC10MIG	Intl. Gray

#### Cable Length 2 Meters

Part No.	Color
S6PC2MBU	Blue
S6PC2MIG	Intl. Gray

#### Cable Length 5 Meters

Part No.	Color
S6PC5MBU	Blue
S6PC5MIG	Intl. Gray

#### Cable Length 15 Meters

Part No.	Color
S6PC15MBU	Blue
S6PC15MIG	Intl. Gray

\* Cable Length  
\*\* Color of Module

## Netkey® Cat6 Copper Accessories

### Patch Panel Flat



#### NKFPL\*\*

NetKey® Modular Patch Panels

Part No.	Port	RU
NKFPL24	24-port	1
NKFPL48	48-port	2

#### NetKey® Modular Patch Panels with Faceplates

Modular patch panels shall consist of a metal panel with molded snap-in faceplates which can be front releasable. Patch panels shall accept all NetKey® Modules for UTP, fiber, or A/V applications and shall mount to standard 19" racks. Patch panels shall be available in 24 and 48-port standard density.

#### Descriptions

<b>Product Type</b>	: Front Access Patch Panel
<b>Mounting options</b>	: Mounts to standard EIA 19" racks
<b>Number of Ports</b>	: 24 , 48
<b>Connector Type</b>	: Unshielded
<b>Material</b>	: Stamping is CRS , Faceplant is ABS
<b>Module Type</b>	: Keystone

### Patch Panel Angled



#### NKFPA\*\*

NetKey® Modular Angled Patch Panels

Part No.	Port	Label	RU
NKFPAL24	24-port	Label	1
NKFPA48	48-port	No label	2

#### NetKey® Modular Angled Patch Panels with Faceplates

Angled design: Allows cable to flow to each side of the rack and minimizes the need for horizontal cable managers by enabling patch cords to be routed directly into vertical cable managers which leads to increased closet density

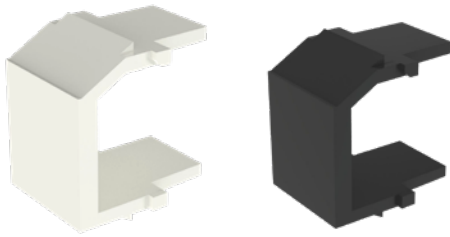
#### Descriptions

<b>Product Type</b>	: Front Access Patch Panel
<b>Mounting options</b>	: Mounts to standard EIA 19" racks
<b>Number of Ports</b>	: 24 , 48
<b>Connector Type</b>	: Unshielded
<b>Material</b>	: Stamping is CRS , Faceplant is ABS
<b>Module Type</b>	: Keystone

\*\* Number of Ports

### Netkey® Cat6 Copper Accessories

#### Blank Module



#### NKBM\*\*-X

NetKey® Blank Keystone Module



Part No.	Color
NKBMIW-X	Off White
NKBMBL-X	Black

#### The NetKey® blank module

reserves a one module space in NetKey® Patch Panels, Faceplates, and Surface Mount Boxes for future use and is black.

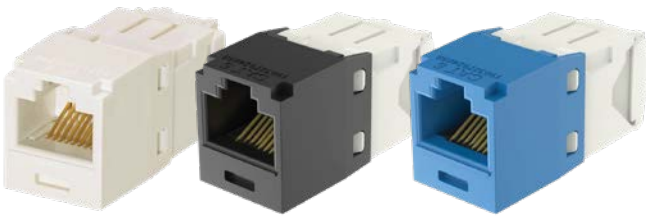
#### Descriptions

<b>Sub Brand</b>	: NetKey
<b>Material</b>	: ABS
<b>Product Type</b>	: Blank Module
<b>Module Type</b>	: Keystone
<b>Color</b>	: Black , Off White
<b>Standards Met</b>	: RoHS Compliant

\*\* Color of Module

## Pan-Net® Cat6 Copper Accessories

### Modular Jack



#### CJ688TG\*\*

Pan-Net® Cat6 Toolless Jack



Part No.	Color
CJ688TGIW	Off White
CJ688TGWH	White
CJ688TGEI	Electric Ivory
CJ688TGIG	Intl. Gray
CJ688TGAW	Arctic White
CJ688TGBL	Black
CJ688TGBU	Blue
CJ688TGRD	Red
CJ688TGYL	Yellow
CJ688TGGR	Green
CJ688TGOR	Orange
CJ688TGVL	Violet
CJ688TGPK	Pink

**The Mini-Com® Cat6 UTP RJ45 TG Jack Module** is designed to terminate 4-pair, 22-26 AWG twisted pair cable. Each module is 100% factory tested to exceed industry standard performance requirements. TG style termination eliminates the need for a termination tool. Each jack is individually serialized for traceability and is compatible with Mini-Com® Modular Patch Panels and Faceplates.

### Descriptions

<b>Product Type</b>	: Jack Module
<b>Performance Level</b>	: Category 6
<b>Connector Type</b>	: Jack Module - Standard
<b>Termination Style</b>	: TG Style
<b>Body Material</b>	: Polycarbonate
<b>Contact Material</b>	: Plated Phosphor Bronze
<b>Module Type</b>	: Mini-Com
<b>Wiring Scheme</b>	: T568A/T568B
<b>Shield Type</b>	: Unshielded (UTP)
<b>Operating Temperature</b>	: 10°C to 75°C
<b>IEC compliance</b>	: Meets IEC 60603-7 and IEC 60512-99-002
<b>RoHS compliance</b>	: Compliant
<b>Block out device (optional)</b>	: Provides a simple and secure method to control access to data ports while not in use

\*\* Color of Module



### Pan-Net® Cat6 Copper Accessories

#### Faceplate



#### CFPE\*IWY

Pan-Net® Faceplate

Part No.	Port
CFPE1IWY	1-port
CFPE2IWY	2-port
CFPE4IWY	4-port
CFPE6IWY	6-port

**The Mini-Com® Executive Series Faceplate** accepts one Mini-Com® Module. The faceplate is single gang and mounts to a NEMA standard single gang opening. The faceplate includes a raised rail design on the outer edge of the frame, has a label pocket for easy identification.

#### Descriptions

<b>Module Type</b>	: Mini-Com
<b>Number of Ports</b>	: 1 , 2 , 4 , 6
<b>Category</b>	: CAT 6 , 6A
<b>Material</b>	: ABS
<b>Color</b>	: Off White
<b>Identification Type</b>	: Label Pocket
<b>Outlet Orientation</b>	: Flat
<b>Gang Opening Type</b>	: Single Gang
<b>Mount Orientation</b>	: Vertical
<b>Standards Met</b>	: RoHS Compliant

\* Number of ports

## Pan-Net® Cat6 Copper Accessories

### Patch Cord 24AWG



#### UTPSP\*M\*\*Y

Pan-Net® Cat6 UTP Patch Cord 24AWG



### The TX6™ PLUS Cat6 UTP Patch Cord

is constructed of 24 AWG, unshielded, twisted pair, stranded, CM cable with high-performance modular plugs. Its tangle-free latch prevents snags and ensures a fast release, streamlining moves, adds, and changes. The slender strain relief boot provides easy access in high-density applications. Enabled with RapidID.

### Descriptions

<b>Product Type</b>	: Patch Cord	<b>Operating Temperature</b>	: -10 °C to 60 °C
<b>Conductor Gauge</b>	: 24 AWG	<b>Flammability Rating</b>	: CM
<b>Performance Level</b>	: Category 6	<b>IEC Variant</b>	: 60603-7
<b>Conductor Type</b>	: Stranded	<b>RapidID™ Enabled</b>	: Yes
<b>Cable Construction</b>	: U/UTP		
<b>Jacket Material</b>	: Polyvinyl Chloride		
<b>Nominal Cable OD</b>	: 5.8 mm		
<b>Wiring Scheme</b>	: T568B		

Part No.	Color
<b>Cable Length 1 Meter</b>	
UTPSP1MBUY	Blue
UTPSP1MBLY	Black
UTPSP1MY	Off White
UTPSP1MGRY	Green
UTPSP1MRDY	Red
UTPSP1MYLY	Yellow
UTPSP1MVLY	Violet
UTPSP1MGYY	Gray
UTPSP1MORY	Orange

Part No.	Color
<b>Cable Length 2 Meters</b>	
UTPSP2MBUY	Blue
UTPSP2MBLY	Black
UTPSP2MY	Off White
UTPSP2MGRY	Green
UTPSP2MRDY	Red
UTPSP2MYLY	Yellow
UTPSP2MVLY	Violet
UTPSP2MGYY	Gray
UTPSP2MORY	Orange

Part No.	Color
<b>Cable Length 3 Meters</b>	
UTPSP3MBUY	Blue
UTPSP3MBLY	Black
UTPSP3MY	Off White
UTPSP3MGRY	Green
UTPSP3MRDY	Red
UTPSP3MYLY	Yellow
UTPSP3MVLY	Violet
UTPSP3MGYY	Gray
UTPSP3MORY	Orange

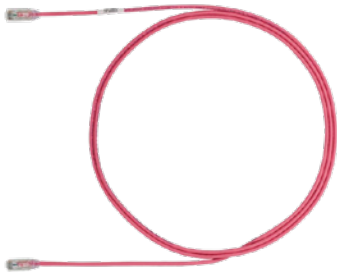
Part No.	Color
<b>Cable Length 5 Meters</b>	
UTPSP5MBUY	Blue
UTPSP5MBLY	Black
UTPSP5MY	Off White
UTPSP5MGRY	Green
UTPSP5MRDY	Red
UTPSP5MYLY	Yellow
UTPSP5MVLY	Violet
UTPSP5MGYY	Gray
UTPSP5MORY	Orange

Part No.	Color
<b>Cable Length 10 Meters</b>	
UTPSP10MBUY	Blue
UTPSP10MBLY	Black
UTPSP10MY	Off White
UTPSP10MGRY	Green
UTPSP10MRDY	Red
UTPSP10MYLY	Yellow
UTPSP10MVLY	Violet
UTPSP10MGYY	Gray
UTPSP10MORY	Orange

\* Cable Length  
\*\* Color of Module

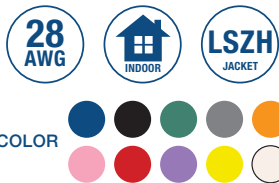
## Pan-Net® Cat6 Copper Accessories

### Patch Cord 28AWG



#### UTP28SP\*M\*\*

Pan-Net® Cat6 UTP Patch Cord 28AWG



### The TX6-28™ Cat6 UTP Patch Cord

is 3.8mm diameter constructed of 28 AWG, unshielded, twisted pair, stranded, CM/LSZH cable with high-performance modular plugs. The tangle-free latch prevents snags and ensures a fast release, streamlining moves, adds, and changes. Enabled with RapidID.

### Descriptions

<b>Product Type</b>	: Patch Cord	<b>Wiring Scheme</b>	: T568B
<b>Conductor Gauge</b>	: 28 AWG	<b>Operating Temperature</b>	: -10 to 75°C
<b>Performance Level</b>	: Category 6	<b>Flammability Rating</b>	: Dual Rated (CM/LSZH)
<b>Conductor Type</b>	: Stranded	<b>IEC Variant</b>	: 60603-7
<b>Cable Construction</b>	: U/UTP	<b>RapidID™ Enabled</b>	: Yes
<b>Jacket Material</b>	: LSZH Material		
<b>Nominal Cable OD</b>	: 3.8 mm		

Part No.	Color
<b>Cable Length 1 Meter</b>	
UTP28SP1MBU	Blue
UTP28SP1MBL	Black
UTP28SP1MGR	Green
UTP28SP1MGY	Gray
UTP28SP1MOR	Orange
UTP28SP1MPK	Pink
UTP28SP1MRD	Red
UTP28SP1MVL	Violet
UTP28SP1MYL	Yellow
UTP28SP1M	Off White

Part No.	Color
<b>Cable Length 3 Meters</b>	
UTP28SP3MBU	Blue
UTP28SP3MBL	Black
UTP28SP3MGR	Green
UTP28SP3MGY	Gray
UTP28SP3MOR	Orange
UTP28SP3MPK	Pink
UTP28SP3MRD	Red
UTP28SP3MVL	Violet
UTP28SP3MYL	Yellow
UTP28SP3M	Off White

Part No.	Color
<b>Cable Length 10 Meters</b>	
UTP28SP10MBU	Blue
UTP28SP10MBL	Black
UTP28SP10MGR	Green
UTP28SP10MGY	Gray
UTP28SP10MOR	Orange
UTP28SP10MPK	Pink
UTP28SP10MRD	Red
UTP28SP10MVL	Violet
UTP28SP10MYL	Yellow
UTP28SP10M	Off White

Part No.	Color
<b>Cable Length 2 Meters</b>	
UTP28SP2MBU	Blue
UTP28SP2MBL	Black
UTP28SP2MGR	Green
UTP28SP2MGY	Gray
UTP28SP2MOR	Orange
UTP28SP2MPK	Pink
UTP28SP2MRD	Red
UTP28SP2MVL	Violet
UTP28SP2MYL	Yellow
UTP28SP2M	Off White

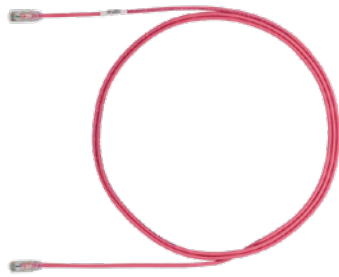
Part No.	Color
<b>Cable Length 5 Meters</b>	
UTP28SP5MBU	Blue
UTP28SP5MBL	Black
UTP28SP5MGR	Green
UTP28SP5MGY	Gray
UTP28SP5MOR	Orange
UTP28SP5MPK	Pink
UTP28SP5MRD	Red
UTP28SP5MVL	Violet
UTP28SP5MYL	Yellow
UTP28SP5M	Off White

\* Cable Length  
\*\* Color of Module

### Pan-Net® Cat6 Copper Accessories

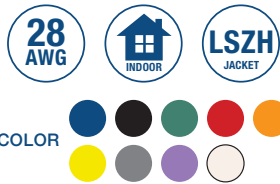
#### Patch Cord 28AWG

##### Patch Cord 28AWG 6 INCH



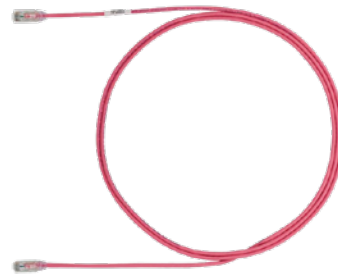
##### UTP28SP6IN\*\*

Pan-Net® Cat6 UTP Patch Cord, 28 AWG, 6 inches.



Part No.	Color
UTP28SP6INBU	Blue
UTP28SP6INBL	Black
UTP28SP6INGR	Green
UTP28SP6INRD	Red
UTP28SP6INOR	Orange
UTP28SP6INYL	Yellow
UTP28SP6INGY	Gray
UTP28SP6INVL	Violet
UTP28SP6IN	Off White

##### Patch Cord 28AWG 8 INCH



##### UTP28SP8IN\*\*

Pan-Net® Cat6 UTP Patch Cord, 28 AWG, 8 inches.



Part No.	Color
UTP28SP8INBU	Blue
UTP28SP8INBL	Black
UTP28SP8INGR	Green
UTP28SP8INRD	Red
UTP28SP8INOR	Orange
UTP28SP8INYL	Yellow
UTP28SP8INGY	Gray
UTP28SP8INVL	Violet
UTP28SP8INPK	Pink
UTP28SP8IN	Off White

\*\* Color of Module

## Pan-Net® Cat6 Copper Accessories

### Patch Panel Flat



#### CPPL\*\*WBLY

Mini-Com® Modular Patch Panels

Part No.	Port	RU
CPPL24WBLY	24-port	1
CPPL48WBLY	48-port	2
CPP48HDWBLY	48-port	1

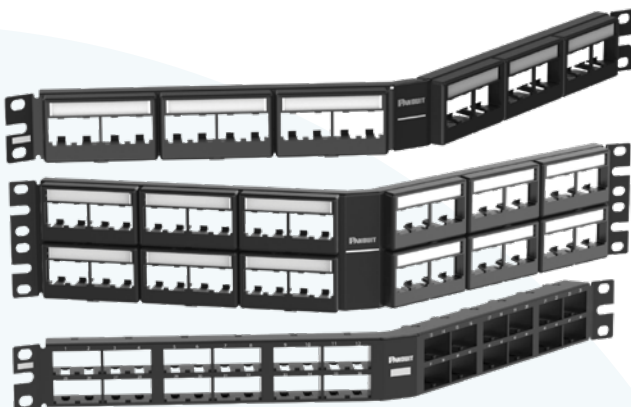
#### Mini-Com® Faceplate Modular Patch Panel

Modular patch panels shall consist of a metal panel with molded snap-in faceplates which can be front releasable. Patch panels shall accept all Mini-Com® Modules for UTP, STP, fiber, or A/V applications and shall mount to standard 19" racks. Patch panels shall be available in 24 and 48-port standard density.

#### Descriptions

<b>Product Type</b>	: Front Access , Flush Mounted
<b>Mounting options</b>	: Mounts to standard EIA 19" racks
<b>Number of Ports</b>	: 24 , 48
<b>Connector Type</b>	: Unshielded
<b>Material</b>	: CRS
<b>Module Type</b>	: Mini-Com
<b>Standards Met</b>	: RoHS Compliant

### Patch Panel Angled



#### CPPLA\*\*WBLY

Mini-Com® Modular Angled Patch Panels

Part No.	Port	RU
CPPLA24WBLY	24-port	1
CPPLA48WBLY	48-port	2
CPPLA48HDWBLY	48-port	1

#### Mini-Com® Faceplate Modular Patch Panel

Modular patch panels shall consist of a metal panel with molded snap-in faceplates which can be front releasable. Patch panels shall accept all Mini-Com® Modules for UTP, STP, fiber, or A/V applications and shall mount to standard 19" racks. Patch panels shall be available in 24 and 48-port standard density. Angled patch panels shall be designed at an optimum angle to help route the cable.

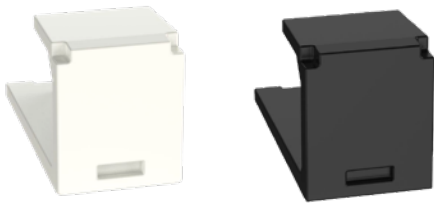
#### Descriptions

<b>Product Type</b>	: Front Access , Flush Mounted
<b>Mounting options</b>	: Mounts to standard EIA 19" racks
<b>Number of Ports</b>	: 24 , 48
<b>Connector Type</b>	: Unshielded
<b>Material</b>	: CRS
<b>Module Type</b>	: Mini-Com
<b>Standards Met</b>	: RoHS Compliant

\*\* Number of Port

### Pan-Net® Cat6 Copper Accessories

#### Blank Module



#### CMB\*\*-X

The Mini-Com® Faceplate



Part No.	Color
CMBIW-X	White
CMBBL-X	Black

#### The Mini-Com® Blank Module

reserves a one module space for future use in Mini-Com® Patch Panels, Faceplates, and Surface Mount Boxes.

#### Descriptions

<b>Sub Brand</b>	: Pan-Net
<b>Material</b>	: ABS
<b>Product Type</b>	: Blank Module
<b>Module Type</b>	: Mini-Com
<b>Color</b>	: Black , white
<b>Standards Met</b>	: RoHS Compliant

#### Modular Plug



#### SP688-C

Pan-Plug® Modular Plug

#### Pan-Plug® Modular Plug

The Cat6 UTP modular plug terminates 4-pair, 23-24 AWG, 100 ohm, solid or stranded unshielded twisted pair patch cable. The modular plug has a robust construction that is rated to 2500 mating cycles. The patented tangle-free latch prevents snags and provides easy release, saving time and providing reliability on moves, adds, and changes. This includes 100 per package.

#### Descriptions

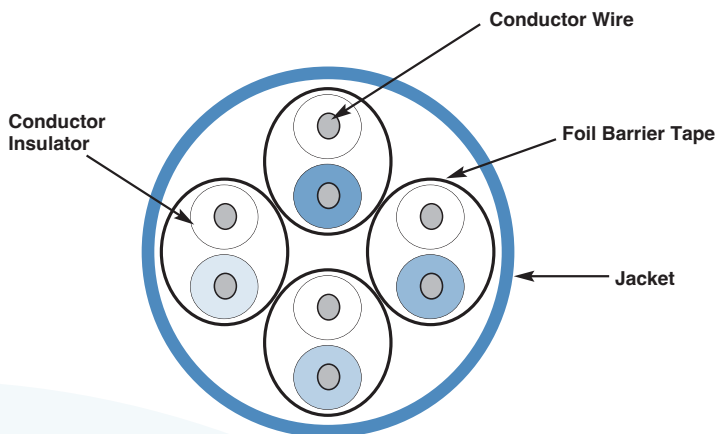
<b>Product Type</b>	: Modular Plug
<b>Performance Level</b>	: Category 6
<b>Conductor termination</b>	: Compatible with most 23-24 AWG solid or stranded Category 6 UTP patch cable
<b>Connector Type</b>	: Modular Plug
<b>Body Material</b>	: Plastic
<b>Contact Material</b>	: Gold Plated Phosphor Bronze
<b>Shield Type</b>	: Unshielded (UTP)
<b>Flammability Rating</b>	: UL94V-0
<b>Operating temperature</b>	: -10°C to 60°C
<b>Robust construction</b>	: Rated to 2500 mating cycles

### Netkey® Cat6A Copper Cable

#### The NetKey® UTP Copper Cable

with MaTriX Technology is a component of the TX6A™ Copper Cabling System. Interoperable and backward compatible, this end-to-end system provides design flexibility to protect network investments well into the future.

- 10GBASE-T Ethernet
- Data center I/O consolidation
- Data center server virtualization
- Consolidation of network interconnects
- Back-bone aggregation
- Parallel processing and high speed computing



#### NUL6X04BU



COLOR ●

#### Standard

- IEC 60332-1, IEC 60754, IEC 61034
- IEC 60332-1, IEC 60754, IEC 61034,
- EuroClass Cca-s1a,d1,a1 per EN 13501
- IEEE 802.3af, IEEE 802.3at and IEEE 802.3bt

#### Descriptions

Certified channel performance in a 4-connector configuration up to 100 meters and exceeds the requirements of ISO 11801 Class EA standards swept up to 500 MHz for supporting 10GBASE-T

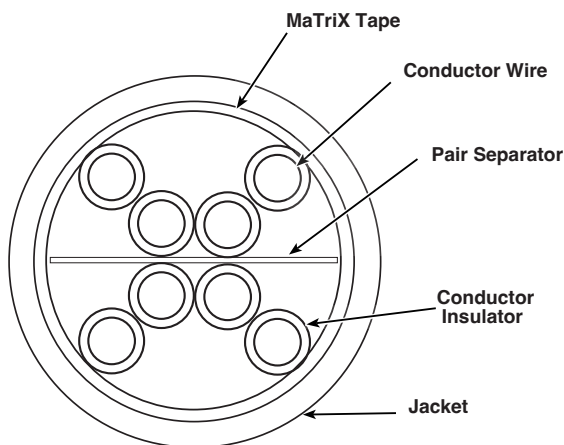
110 N (25 lbf) maximum installation tension  
 0°C to 50°C during installation  
 -20°C to 60°C during operation  
 Cable diameter 7.2 mm  
 Cable weight 15 kg/305m  
 Operating Voltage, Maximum 80 V

## PANNET® Cat6A Copper Cable

### The TX6A™ UTP Copper Cable

with Vari-MaTriX HD Technology is a component of the TX6A™ Copper Cabling System. Interoperable and backward compatible, this end-to-end system provides design flexibility to protect network investments well into the future.

- 10GBASE-T Ethernet
- Data center I/O consolidation
- Data center server virtualization
- Consolidation of network interconnects
- Back-bone aggregation
- Parallel processing and high speed computing



### PUL6AHD04BL



COLOR ● ● ● ●

Part No.	Color
PUL6AHD04BU	Blue
PUL6AHD04WH	White
PUL6AHD04IG	Gray
PUL6AHD04BL	Black

### Standard

- IEC 60332-3-22, 60754-2, 61034-2
- EN 50575: EuroClass Dca-s2,d2,a
- IEEE 802.3af, IEEE 802.3at and IEEE 802.3bt

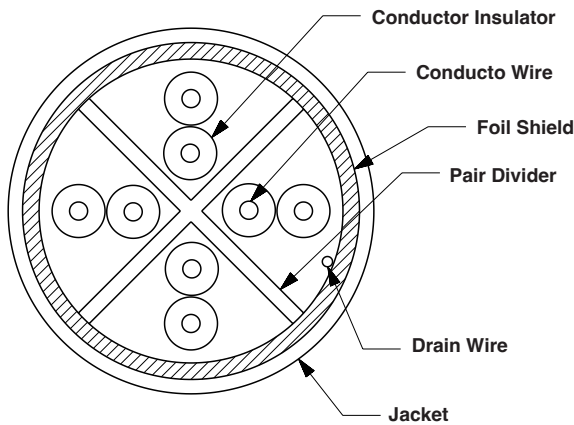
### Descriptions

110 N (25 lbf) maximum installation tension  
 0°C to 60°C during installation  
 -20°C to 75°C during operation  
 Cable diameter 6.2 mm  
 Cable weight 12.8 kg/305m  
 Operating Voltage, Maximum 80 V

\*\* Color of jacket



## PANNET® Cat6A Copper Cable



### PFL6X04\*\*



COLOR ● ○

Part No.	Color
PFL6X04BU	Blue
PFL6X04WH	White

### Standard

- ANSI/TIA-568.2-D , SO 11801 Class E ,
- IEC 60332-3-22, IEC 60754-1, IEC 60754-2, IEC 601034-2,
- EN 50575: EuroClass Dca-s2,d2,a1
- IEEE 802.3af, IEEE 802.3at and IEEE 802.3bt

### Descriptions

110 N (25 lbf) maximum installation tension  
 0°C to 75°C during installation  
 -20°C to 75°C during operation  
 Cable diameter 7.3mm  
 Cable weight 16 kg/305m  
 Operating Voltage, Maximum 80 V  
 Ultimate Breaking Strength >400 N (90 lbf)

### PUO6X04BL



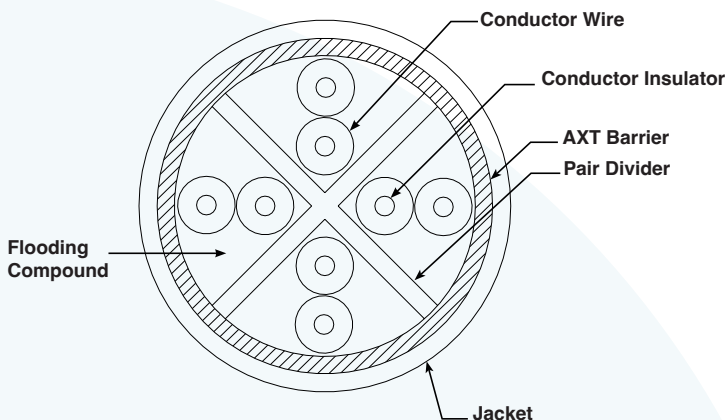
COLOR ●

### Standard

- ANSI/TIA-568.2-D Category 6 and ISO 11801 Class EA , IEC 60794-1-2F5
- Method B Water Prevention Requirement
- EN50575: Euroclass Fca6
- IEEE 802.3af, IEEE 802.3at and IEEE 802.3bt

### Descriptions

110 N (25 lbf) maximum installation tension  
 0°C to 50°C during installation  
 -40°C to 80°C during operation  
 Black UV-resistant and abrasion-resistant Cable jacket  
 Cable diameter 8.2 mm  
 Cable weight 32 kg/305m  
 Operating Voltage, Maximum 80 V



## Netkey® Cat6A Copper Accessories

### Modular Jack



#### NK6X88\*\*

NetKey Cat6A Punchdown Jack



Part No.	Color
NK6X88MIW	Off White
NK6X88MWH	White
NK6X88MEI	Electric Ivory
NK6X88MIG	Intl. Gray
NK6X88MAW	Arctic White
NK6X88MBL	Black
NK6X88MBU	Blue
NK6X88MRD	Red
NK6X88MYL	Yellow
NK6X88MGR	Green
NK6X88MOR	Orange
NK6X88MVL	Violet

### The NetKey® Cat6A UTP RJ45 Punchdown Keystone Jack Module

is designed to terminate 4-pair, 22–26 AWG twisted pair cable. Each module is 100% factory tested to exceed industry standard performance requirements. Contacts are plated with 50 microinches of gold for superior performance. Jacks are individually serialized for traceability and are compatible with keystone interfaces such as NetKey® Faceplates, Modular Patch Panels, and Surface Mount Boxes.

### Descriptions

<b>Product Type</b>	: Jack Module
<b>Performance Level</b>	: Category 6A
<b>Connector Type</b>	: Jack Module - Standard
<b>Termination Style</b>	: Punchdown
<b>Body Material</b>	: Polycarbonate
<b>Contact Material</b>	: Plated Phosphor Bronze
<b>Module Type</b>	: Keystone
<b>Wiring Scheme</b>	: T568A/T568B
<b>Shield Type</b>	: Unshielded (UTP)
<b>Minimum Operating Temperature</b>	: -10 °C to 75 °C
<b>PoE and PoH compliance</b>	: Meets IEEE 802.3af/802.3at and 802.3bt type 3 and type 4 Supports Power over HDBaseT up to 100 watts
<b>IEC compliance</b>	: Meets IEC 60603-7 and IEC 60512-99-002

\*\* Color of Module

## Netkey® Cat6A Copper Accessories

### Faceplate



#### NK\*FIWY

NetKey® Faceplate

Part No.	Port
NK1FIWY	1-port
NK2FIWY	2-port
NK4FIWY	4-port
NK6FIWY	6-port

#### The NetKey® Faceplate

accepts one keystone module. The faceplate is single gang and mounts to a NEMA standard single gang opening. The faceplate includes a label pocket for easy identification

#### Descriptions

<b>Module Type</b>	: Keystone
<b>Number of Ports</b>	: 1 , 2 , 4 , 6
<b>Category</b>	: CAT6 , 6A
<b>Material</b>	: ABS
<b>Color</b>	: Off White
<b>Identification Type</b>	: Label Pocket
<b>Outlet Orientation</b>	: Flat
<b>Gang Opening Type</b>	: Single Gang
<b>Mount Orientation</b>	: Vertical
<b>Standards Met</b>	: RoHS Compliant

### Faceplate Shuttered



#### NKFPL86F\*SAW

NetKey® Shuttered Faceplate

Part No.	Port
NKFPL86F1SAW	1-port
NKFPL86F2SAW	2-port
NKFPL86F4SAW	4-port

#### The NetKey® 86mm x 86mm Faceplate.

The faceplate is flat and shuttered to protect modules from dust and debris. A two-piece design conceals the two M4.0-0.7x25mm panhead mounting screws. The faceplate includes a label pocket and icon slots for easy identification

#### Descriptions

<b>Module Type</b>	: Keystone
<b>Number of Ports</b>	: 1 , 2 , 4
<b>Category</b>	: CAT6 , 6A
<b>Material</b>	: ABS
<b>Color</b>	: Arctic White
<b>Identification Type</b>	: Label Pocket
<b>Outlet Orientation</b>	: Flat/Shuttered
<b>Gang Opening Type</b>	: Single Gang
<b>Mount Orientation</b>	: Vertical
<b>Standards Met</b>	: RoHS Compliant

\* Number of Ports

## Netkey® Cat6A Copper Accessories

### Patch Cord



#### NKU6APC\*M\*\*

NetKey® Cat6A UTP Patch Cord



#### The NetKey® Cat6 UTP Patch Cord

shall be constructed of 26 AWG twisted pair stranded copper cable with a UTP modular plug on each end.

#### Descriptions

<b>Cable Construction</b>	: U/UTP
<b>Performance Level</b>	: Category 6A
<b>Conductor Gauge</b>	: 26 AWG
<b>Patch Cord Type</b>	: Unshielded
<b>Plug Housing Material</b>	: Polycarbonate
<b>Jacket Material</b>	: Polyvinyl Chloride
<b>Cable Outside Diameter</b>	: 5.9 mm
<b>Wiring Scheme</b>	: T568B
<b>Operating Temperature</b>	: -10°C to 60 °C
<b>Flammability Rating</b>	: CM
<b>IEC Variant</b>	: 60603-7
<b>PoE Compatibility</b>	: PoE/PoE+/PoE++

#### Cable Length 1 Meter

Part No.	Color
NKU6APC1M	Off White
NKU6APC1MBU	Blue
NKU6APC1MRD	Red

#### Cable Length 3 Meters

Part No.	Color
NKU6APC3M	Off White
NKU6APC3MBU	Blue
NKU6APC3MRD	Red

#### Cable Length 10 Meters

Part No.	Color
NKU6APC10M	Off White
NKU6APC10MBU	Blue
NKU6APC10MRD	Red

#### Cable Length 2 Meters

Part No.	Color
NKU6APC2M	Off White
NKU6APC2MBU	Blue
NKU6APC2MRD	Red

#### Cable Length 5 Meters

Part No.	Color
NKU6APC5M	Off White
NKU6APC5MBU	Blue
NKU6APC5MRD	Red

\* Cable Length  
\*\* Color of Module

## Netkey® Cat6A Copper Accessories

### Patch Cord Shielded



#### S6XPC\*M\*\*

NetKey® Shielded Cat6A S/FTP Patch Cord



#### The shielded Cat6A Patch Cord

is constructed of 26 AWG, twisted pair, stranded, LSZH cable with modular plugs. Includes integral pair manager and tangle free latch to prevent snags. The patch cord's slender strain relief boot provides easy access in high-density applications.

#### Descriptions

<b>Cable Construction</b>	: S/FTP
<b>Performance Level</b>	: Category 6A
<b>Conductor Gauge</b>	: 26 AWG
<b>Patch Cord Type</b>	: Shielded
<b>Plug Housing Material</b>	: Polycarbonate
<b>Cable Outside Diameter</b>	: 6.4 mm
<b>Wiring Scheme</b>	: T568B
<b>Operating Temperature</b>	: -10°C to 60 °C
<b>Flammability Rating</b>	: LSZH
<b>IEC Variant</b>	: 60603-7
<b>PoE Compatibility</b>	: PoE/PoE+/PoE++

#### Cable Length 1 Meter

Part No.	Color
S6XPC1MBU	Blue
S6XPC1MIG	Intl. Gray

#### Cable Length 3 Meters

Part No.	Color
S6XPC3MBU	Blue
S6XPC3MIG	Intl. Gray

#### Cable Length 10 Meters

Part No.	Color
S6XPC10MBU	Blue
S6XPC10MIG	Intl. Gray

#### Cable Length 2 Meters

Part No.	Color
S6XPC2MBU	Blue
S6XPC2MIG	Intl. Gray

#### Cable Length 5 Meters

Part No.	Color
S6XPC5MBU	Blue
S6XPC5MIG	Intl. Gray

#### Cable Length 15 Meters

Part No.	Color
S6XPC2MBU	Blue
S6XPC15MIG	Intl. Gray

\* Cable Length  
\*\* Color of Module

## Netkey® Cat6A Copper Accessories

### Patch Panel Flat



#### NKFPL\*\*

NetKey® Modular Patch Panels

Part No.	Port	RU
NKFPL24	24-port	1
NKFPL48	48-port	2

### The NetKey® Modular Patch Panels with Faceplates

Modular patch panels shall consist of a metal panel with molded snap-in faceplates which can be front releasable. Patch panels shall accept all NetKey Modules for UTP, fiber, or A/V applications and shall mount to standard 19" racks. Patch panels shall be available in 24 and 48-port standard density.

### Descriptions

<b>Product Type</b>	: Front Access Patch Panel
<b>Mounting options</b>	: Mounts to standard EIA 19" racks
<b>Number of Ports</b>	: 24 , 48
<b>Connector Type</b>	: Unshielded
<b>Material</b>	: Stamping is CRS , Faceplant is ABS
<b>Module Type</b>	: Keystone

### Patch Panel Angled



#### NKFPA\*\*

NetKey® Modular Angled Patch Panels

Part No.	Port	Label	RU
NKFPA24	24-port	Label	1
NKFPA48	48-port	Nonlabel	2

### The NetKey® Modular Angled Patch Panels with Faceplates

Angled design: Allows cable to flow to each side of the rack and minimizes the need for horizontal cable managers by enabling patch cords to be routed directly into vertical cable managers which leads to increased closet density

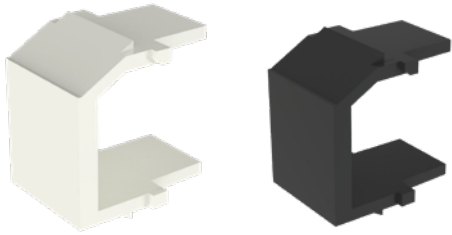
### Descriptions

<b>Product Type</b>	: Front Access Patch Panel
<b>Mounting options</b>	: Mounts to standard EIA 19" racks
<b>Number of Ports</b>	: 24 , 48
<b>Connector Type</b>	: Unshielded
<b>Material</b>	: Stamping is CRS , Faceplant is ABS
<b>Module Type</b>	: Keystone

\*\* Number of Ports

### Netkey® Cat6A Copper Accessories

#### Blank Module



#### NKBM\*\*-X

NetKey® Blank Keystone Module



Part No.	Color
NKBMIW-X	Off White
NKBMBL-X	Black

#### The NetKey® blank module

reserves a one module space in NetKey Patch Panels, Faceplates, and Surface Mount Boxes for future use and is black.

#### Descriptions

<b>Sub Brand</b>	: NetKey
<b>Material</b>	: ABS
<b>Product Type</b>	: Blank Module
<b>Module Type</b>	: Keystone
<b>Color</b>	: Black , Off White
<b>Standards Met</b>	: RoHS Compliant

## Pan-Net® Cat6A Copper Accessories

### Modular Jack



#### CJ6X88TG\*\*

The Mini-Com® Cat 6A Toolless Jack



Part No.	Color
CJ6X88TGIW	Off White
CJ6X88TGWH	White
CJ6X88TGEI	Electric Ivory
CJ6X88TGIG	Intl. Gray
CJ6X88TGAW	Arctic White
CJ6X88TGBL	Black
CJ6X88TGBU	Blue
CJ6X88TGRD	Red
CJ6X88TGYL	Yellow
CJ6X88TGGR	Green
CJ6X88TGOR	Orange
CJ6X88TGVL	Violet
CJ6X88TGPK	Pink

#### The Mini-Com® Cat6A UTP RJ45 TG Jack Module

is designed to terminate 4-pair, 22-26 AWG twisted pair cable. Each module is 100% factory tested to exceed industry standard performance requirements. TG style termination eliminates the need for a termination tool. Each jack is individually serialized for traceability and is compatible with Mini-Com Modular Patch Panels and Faceplates.

#### Descriptions

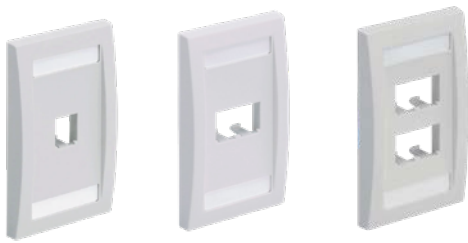
<b>Product Type</b>	: Jack Module
<b>Performance Level</b>	: Category 6A
<b>Connector Type</b>	: Jack Module - Standard
<b>Termination Style</b>	: TG Style
<b>Body Material</b>	: Polycarbonate
<b>Contact Material</b>	: Plated Phosphor Bronze
<b>Module Type</b>	: Mini-Com
<b>Wiring Scheme</b>	: T568A/T568B
<b>Shield Type</b>	: Unshielded (UTP)
<b>Operating Temperature</b>	: 10°C to 75°C
<b>IEC compliance</b>	: Meets IEC 60603-7 and IEC 60512-99-002
<b>RoHS compliance</b>	: Compliant
<b>Block out device (optional)</b>	: Provides a simple and secure method to control access to data ports while not in use

\*\* Color of Module



### Pan-Net® Cat6A Copper Accessories

#### Faceplate



#### CFPE\*IWY

Pan-Net® Faceplate

Part No.	Port
CFPE1IWY	1-port
CFPE2IWY	2-port
CFPE4IWY	4-port
CFPE6IWY	6-port

#### The Pan-Net® Faceplate

Executive Series Faceplate accepts one Mini-Com Module. The faceplate is single gang and mounts to a NEMA standard single gang opening. The faceplate includes a raised rail design on the outer edge of the frame, has a label pocket for easy identification

#### Descriptions

<b>Module Type</b>	: Mini-Com
<b>Number of Ports</b>	: 1 , 2 , 4 , 6
<b>Category</b>	: CAT6 , 6A
<b>Material</b>	: ABS
<b>Color</b>	: Off White
<b>Identification Type</b>	: Label Pocket
<b>Outlet Orientation</b>	: Flat
<b>Gang Opening Type</b>	: Single Gang
<b>Mount Orientation</b>	: Vertical
<b>Standards Met</b>	: RoHS Compliant

\* Port of Module

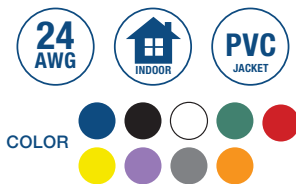
## Pan-Net® Cat6A Copper Accessories

### Patch Cord 24AWG



#### UTP6AX\*M\*\*

Pan-Net® Cat6A UTP Patch Cord 24AWG



### The TX6A™ 10Gig Cat6A UTP Patch Cord

is constructed of 24 AWG, unshielded, twisted pair, solid, CM cable with high-performance modular plugs. Its solid foil tape limits alien crosstalk, ensuring 10 Gb/s transmission. The tangle-free latch prevents snags and ensures a fast release, streamlining moves, adds, and changes. Enabled with RapidID

### Descriptions

<b>Product Type</b>	: Patch Cord	<b>Operating Temperature</b>	: -10 °C to 60 °C
<b>Conductor Gauge</b>	: 24 AWG	<b>Flammability Rating</b>	: CM
<b>Performance Level</b>	: Category 6A	<b>IEC Variant</b>	: 60603-7
<b>Conductor Type</b>	: Stranded	<b>RapidID™ Enabled</b>	: Yes
<b>Cable Construction</b>	: U/UTP		
<b>Jacket Material</b>	: Polyvinyl Chloride		
<b>Nominal Cable OD</b>	: 6.4 mm		
<b>Wiring Scheme</b>	: T568B		

Part No.	Color
<b>Cable Length 1 Meter</b>	
UTP6AX1MBU	Blue
UTP6AX1MBL	Black
UTP6AX1M	Off White
UTP6AX1MGR	Green
UTP6AX1MRD	Red
UTP6AX1MYL	Yellow
UTP6AX1MVL	Violet
UTP6AX1MIG	Intl. Gray
UTP6AX1MOR	Orange

Part No.	Color
<b>Cable Length 2 Meters</b>	
UTP6AX2MBU	Blue
UTP6AX2MBL	Black
UTP6AX2M	Off White
UTP6AX2MGR	Green
UTP6AX2MRD	Red
UTP6AX2MYL	Yellow
UTP6AX2MVL	Violet
UTP6AX2MIG	Intl. Gray
UTP6AX2MOR	Orange

Part No.	Color
<b>Cable Length 3 Meters</b>	
UTP6AX3MBU	Blue
UTP6AX3MBL	Black
UTP6AX3M	Off White
UTP6AX3MGR	Green
UTP6AX3MRD	Red
UTP6AX3MYL	Yellow
UTP6AX3MVL	Violet
UTP6AX3MIG	Intl. Gray
UTP6AX3MOR	Orange

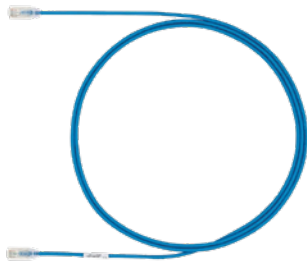
Part No.	Color
<b>Cable Length 5 Meters</b>	
UTP6AX5MBU	Blue
UTP6AX5MBL	Black
UTP6AX5M	Off White
UTP6AX5MGR	Green
UTP6AX5MRD	Red
UTP6AX5MYL	Yellow
UTP6AX5MVL	Violet
UTP6AX5MIG	Intl. Gray
UTP6AX5MOR	Orange

Part No.	Color
<b>Cable Length 10 Meters</b>	
UTP6AX10MBU	Blue
UTP6AX10MBL	Black
UTP6AX10M	Off White
UTP6AX10MGR	Green
UTP6AX10MRD	Red
UTP6AX10MYL	Yellow
UTP6AX10MVL	Violet
UTP6AX10MIG	Intl. Gray
UTP6AX10MOR	Orange

\* Cable Length  
\*\* Color of Module

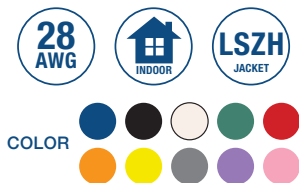
## Pan-Net® Cat6A Copper Accessories

### Patch Cord 28AWG



**UTP28X\*M\*\***

Pan-Net® Cat6A UTP Patch Cord 28AWG



### The TX6A-28™ Cat6A UTP Patch Cord

is constructed of 28 AWG unshielded, twisted pair, solid, CM/LSZH cable with high-performance modular plugs. The tangle-free latch prevents snags and ensures a fast release, streamlining moves, adds, and changes. Enabled with RapidID.

### Descriptions

<b>Product Type</b>	: Patch Cord	<b>Wiring Scheme</b>	: T568B
<b>Conductor Gauge</b>	: 28 AWG	<b>Operating Temperature</b>	: -10 to 75°C
<b>Performance Level</b>	: Category 6A	<b>Flammability Rating</b>	: Dual Rated (CM/LSZH)
<b>Conductor Type</b>	: Solid	<b>IEC Variant</b>	: 60603-7
<b>Cable Construction</b>	: U/UTP	<b>RapidID™ Enabled</b>	: Yes
<b>Jacket Material</b>	: LSZH Material		
<b>Nominal Cable OD</b>	: 4.7 mm		

Part No.	Color
<b>Cable Length 1 Meter</b>	
UTP28X1MBU	Blue
UTP28X1MBL	Black
UTP28X1M	Off White
UTP28X1MGR	Green
UTP28X1MRD	Red
UTP28X1MOR	Orange
UTP28X1MYL	Yellow
UTP28X1MGY	Gray
UTP28X1MVL	Violet
UTP28X1MPK	Pink

Part No.	Color
<b>Cable Length 3 Meters</b>	
UTP28X3MBU	Blue
UTP28X3MBL	Black
UTP28X3M	Off White
UTP28X3MGR	Green
UTP28X3MRD	Red
UTP28X3MOR	Orange
UTP28X3MYL	Yellow
UTP28X3MGY	Gray
UTP28X3MVL	Violet
UTP28X3MPK	Pink

Part No.	Color
<b>Cable Length 10 Meters</b>	
UTP28X10MBU	Blue
UTP28X10MBL	Black
UTP28X10M	Off White
UTP28X10MGR	Green
UTP28X10MRD	Red
UTP28X10MOR	Orange
UTP28X10MYL	Yellow
UTP28X10MGY	Gray
UTP28X10MVL	Violet
UTP28X10MPK	Pink

Part No.	Color
<b>Cable Length 2 Meters</b>	
UTP28X2MBU	Blue
UTP28X2MBL	Black
UTP28X2M	Off White
UTP28X2MGR	Green
UTP28X2MRD	Red
UTP28X2MOR	Orange
UTP28X2MYL	Yellow
UTP28X2MGY	Gray
UTP28X2MVL	Violet
UTP28X2MPK	Pink

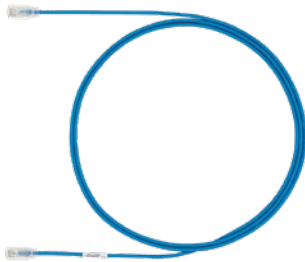
Part No.	Color
<b>Cable Length 5 Meters</b>	
UTP28X5MBU	Blue
UTP28X5MBL	Black
UTP28X5M	Off White
UTP28X5MGR	Green
UTP28X5MRD	Red
UTP28X5MOR	Orange
UTP28X5MYL	Yellow
UTP28X5MGY	Gray
UTP28X5MVL	Violet
UTP28X5MPK	Pink

\* Cable Length  
\*\* Color of Module

## Pan-Net® Cat6A Copper Accessories

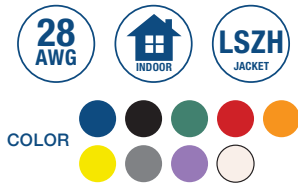
### Patch Cord 28AWG

#### 28 AWG, 6-inch patch cord



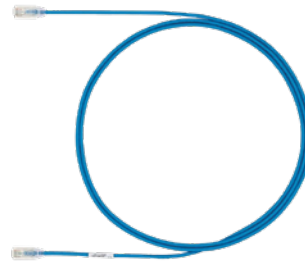
**UTP28X6IN\*\***

Pan-Net® Cat6A UTP Patch Cord, 28 AWG, 6 inches.



Part No.	Color
UTP28X6INBU	Blue
UTP28X6INBL	Black
UTP28X6INGR	Green
UTP28X6INRD	Red
UTP28X6INOR	Orange
UTP28X6INYL	Yellow
UTP28X6INGY	Gray
UTP28X6INVL	Violet
UTP28X6IN	Off White

#### 28 AWG, 8-inch patch cord



**UTP28xSP8IN\*\***

Pan-Net® Cat6A UTP Patch Cord, 28 AWG, 8 inches.

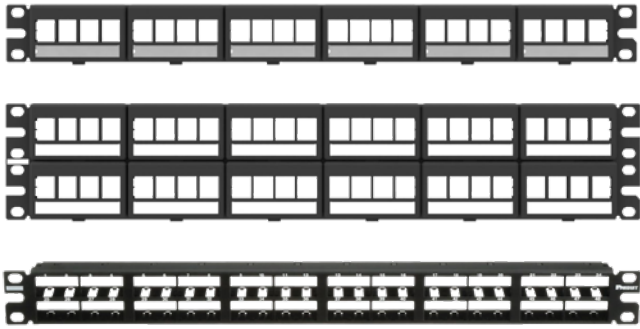


Part No.	Color
UTP28X8INBU	Blue
UTP28X8INBL	Black
UTP28X8INPK	Pink
UTP28X8INGR	Green
UTP28X8INRD	Red
UTP28X8INOR	Orange
UTP28X8INYL	Yellow
UTP28X8INGY	Gray
UTP28X8INVL	Violet
UTP28X8IN	Off White

\*\* Color of Module

## Pan-Net® Cat6A Copper Accessories

### Patch Panel Flat



#### CPPL\*\*WBLY

Mini-Com® Modular Patch Panels

Part No.	Port	RU
CPPL24WBLY	24-port	1
CPPL48WBLY	48-port	2
CPP48HDWBLY	48-port	1

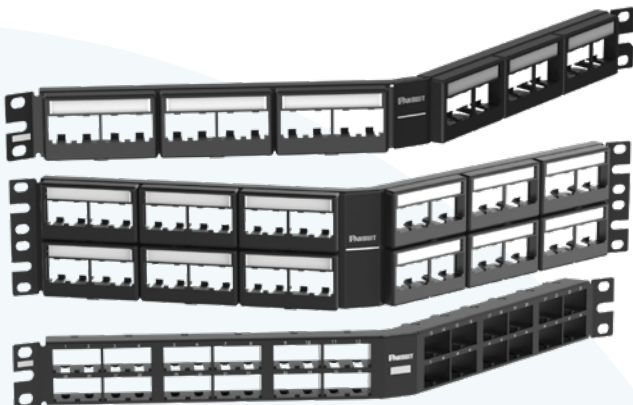
#### Mini-Com® Faceplate Modular Patch Panel

Modular patch panels shall consist of a metal panel with molded snap-in faceplates which can be front releasable. Patch panels shall accept all Mini-Com® Modules for UTP, STP, fiber, or A/V applications and shall mount to standard 19" racks. Patch panels shall be available in 24 and 48-port standard density.

#### Descriptions

<b>Product Type</b>	: Front Access , Flush Mounted
<b>Mounting options</b>	: Mounts to standard EIA 19" racks
<b>Number of Ports</b>	: 24 , 48
<b>Connector Type</b>	: Unshielded
<b>Material</b>	: CRS
<b>Module Type</b>	: Mini-Com
<b>Standards Met</b>	: RoHS Compliant

### Patch Panel Angled



#### CPPLA\*\*WBLY

Mini-Com® Modular Patch Panels

Part No.	Port	RU
CPPLA24WBLY	24-port	1
CPPLA48WBLY	48-port	2
CPPLA48HDWBLY	48-port	1

#### Mini-Com® Faceplate Modular Patch Panel

Modular patch panels shall consist of a metal panel with molded snap-in faceplates which can be front releasable. Patch panels shall accept all Mini-Com® Modules for UTP, STP, fiber, or A/V applications and shall mount to standard 19" racks. Patch panels shall be available in 24 and 48-port standard density. Angled patch panels shall be designed at an optimum angle to help route the cable.

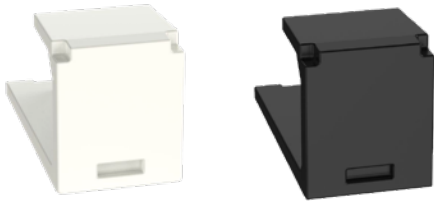
#### Descriptions

<b>Product Type</b>	: Front Access , Flush Mounted
<b>Mounting options</b>	: Mounts to standard EIA 19" racks
<b>Number of Ports</b>	: 24 , 48
<b>Connector Type</b>	: Unshielded
<b>Material</b>	: CRS
<b>Module Type</b>	: Mini-Com
<b>Standards Met</b>	: RoHS Compliant

\*\* Number of Port

### Pan-Net® Cat6A Copper Accessories

#### Blank Module



#### CMB\*\*-X

Mini-Com® Blank Module



Part No.	Color
CMBIW-X	Off White
CMBBL-X	Black

#### The Mini-Com® Blank Module

reserves a one module space for future use in Mini-Com® Patch Panels, Faceplates, and Surface Mount Boxes.

#### Descriptions

<b>Sub Brand</b>	: Pan-Net
<b>Material</b>	: ABS
<b>Product Type</b>	: Blank Module
<b>Module Type</b>	: Mini-Com
<b>Color</b>	: Black , Off White
<b>Standards Met</b>	: RoHS Compliant

#### Modular Plug



#### SP6X88-C

Pan-Plug® Modular Plug

#### Pan-Plug® Modular Plug

Category 6A/Class EA, 8-position, 8-wire, UTP modular plug shall terminate 4-pair, 23-24 AWG, 100 ohms, solid unshielded twisted pair patch cable with maximum conductor insulation diameter of 0.048 inches (1.22mm) and maximum jacket diameter of 0.310 inches (7.87mm).

#### Descriptions

<b>Product Type</b>	: Modular Plug
<b>Performance Level</b>	: Category 6A
<b>Conductor termination</b>	: Compatible with TX6A 10Gig UTP Horizontal Copper Cable
<b>Connector Type</b>	: Modular Plug
<b>Body Material</b>	: Polycarbonate
<b>Contact Material</b>	: Gold Plated Phosphor Bronze
<b>Shield Type</b>	: Unshielded (UTP)
<b>Flammability Rating</b>	: UL94V-0
<b>Operating temperature</b>	: -10°C to 60°C
<b>Robust construction</b>	: Rated to 2500 mating cycles

### Pan-Net® Cat6A Copper Accessories

#### Field Term Plug

---



#### **FP6X88MTG**

TX6A™ UTP Field Term Plug RJ45

#### **TX6A™ UTP Field Term Plug**

Proven electrical performance and quick installation speed from the same forward-motion termination technology used in Panduit's Mini-Com TG modular jacks

#### **Descriptions**

<b>Product Type</b>	: UTP Field Term Plug
<b>Performance Level</b>	: Category 6A
<b>Connector Type</b>	: Field Terminable Plug
<b>Body Material</b>	: Polycarbonate
<b>Contact Material</b>	: Gold Plated Phosphor Bronze
<b>Wiring Scheme</b>	: T568A/T568B
<b>Shield Type</b>	: Unshielded (UTP)

### TOOLS

#### Termination Tool



**EGPT**

TG Jack, Field Term Plug Angled Termination Tool

#### TG Jack, Field Term Plug Angled Termination Tool

The EGPT termination tool assists in terminating angled and straight versions of the TX6A Field Term Plug.

##### Standard

- RoHS Compliant

##### Descriptions

**Product Type** : Field Termination Plug Tool  
**Material** : Glass-Filled Nylon  
**Color** : Violet



**CGJT**

Giga-TX™ TP Termination Tool

#### Giga-TX™ TP Termination Tool (Netkey)

Terminates Giga-TX™ TP Style Jack Modules.

##### Standard

- RoHS Compliant

##### Descriptions

**Product Type** : Giga-TX Module Termination Tool  
**Material** : Glass-Filled Nylon  
**Color** : Black



**EGJT-1**

TG Jack, Termination Tool

#### TG Jack, Termination Tool (Pannet)

This termination tool assists in terminating TG-style jack modules and field term plug.

##### Standard

- RoHS Compliant

##### Descriptions

**Product Type** : Termination Tool  
**Material** : Glass-Filled Nylon  
**Color** : Green



### TOOLS

#### Wire Stripping Tool



#### CJAST

Copper Cable Prep Tool for Stripping Jacket

#### Copper Cable Prep Tool for Stripping Jacket

Strips insulation up to 0.040" (1.0mm) of multi core cable

#### Standard

- RoHS Compliant

#### Descriptions

**Product Type** : Wire Stripping Tool  
**Color** : Black

#### Crimp Tool



#### MPT5-8AS

Modular Plug Crimping Tool

#### Modular Plug Crimping Tool

Pan-Plug® modular plug crimping tool with controlled cycle mechanism which prevents the tool from opening before the termination cycle is complete, ensuring proper termination. For TX6™ PLUS and Pan-Plug™ Modular Plugs.

#### Standard

- RoHS Compliant

#### Descriptions

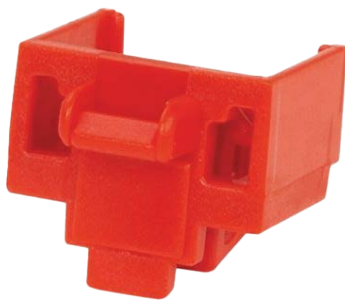
**Product Type** : Crimp Tool  
**Color** : Black

### TOOLS

#### Block-Out Device

#### RJ45 Jack Module Block-Out Device

The block-out device works with most standard RJ45 openings to prevent unauthorized access and to protect from dust and debris or foreign objects



#### PSL-DCJB\*\*

RJ45 Jack Module Block-Out Device

#### Standard

- RoHS Compliant

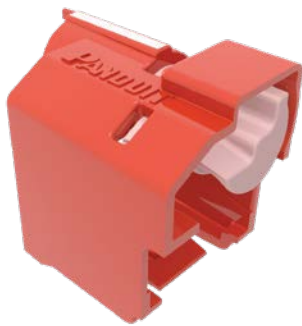
#### Descriptions

**Product Type** : RJ45 Blockout Device  
**Material** : Polycarbonate

Part No.	Color
PSL-DCJB	Red
PSL-DCJB-BL	Black
PSL-DCJB-IW	White
PSL-DCJB-BU	Blue
PSL-DCJB-IG	Intl Gray
PSL-DCJB-YL	Yellow
PSL-DCJB-OR	Orange
PSL-DCJB-GR	Green

## TOOLS

### Lock-In Device



**PSL-DCPLE\*\***  
Lock-In Devices

#### Lock-In Devices

The Lock-In device secures patch cord connections to prevent unauthorized access or accidental removal. Standard device is used when jacks mount flush to the surface. Extended hood protects locking mechanism.

#### Standard

- RoHS Compliant

#### Descriptions

**Product Type** : Lock-In Device  
**Material** : Polycarbonate

Part No.	Color
PSL-DCPLE	Red
PSL-DCPLE-GR	Green
PSL-DCPLE-BL	Black
PSL-DCPLE-BU	Blue
PSL-DCPLE-IG	Gray
PSL-DCPLE-YL	Yellow
PSL-DCPLE-OR	Orange
PSL-DCPLE-IW	Off White

### Cable Organizing Kit



**CBOT24K**  
Tak-Ty® Cable Organizing Kit

#### Tak-Ty® Cable Organizing Kit

The Tak-Ty® Cable Organizing Kit contains a jacket cover with hook and loop fastener and two inserts. The two inserts handle multiple network cable diameters. The fluorescent green insert handles cable outer diameter ranging from 0.180 inches to 0.248 inches (4.57mm to 6.30mm). The fluorescent yellow insert handles cable outer diameter ranging from 0.230 inches to 0.310 inches (5.84mm to 7.87mm).

#### Standard

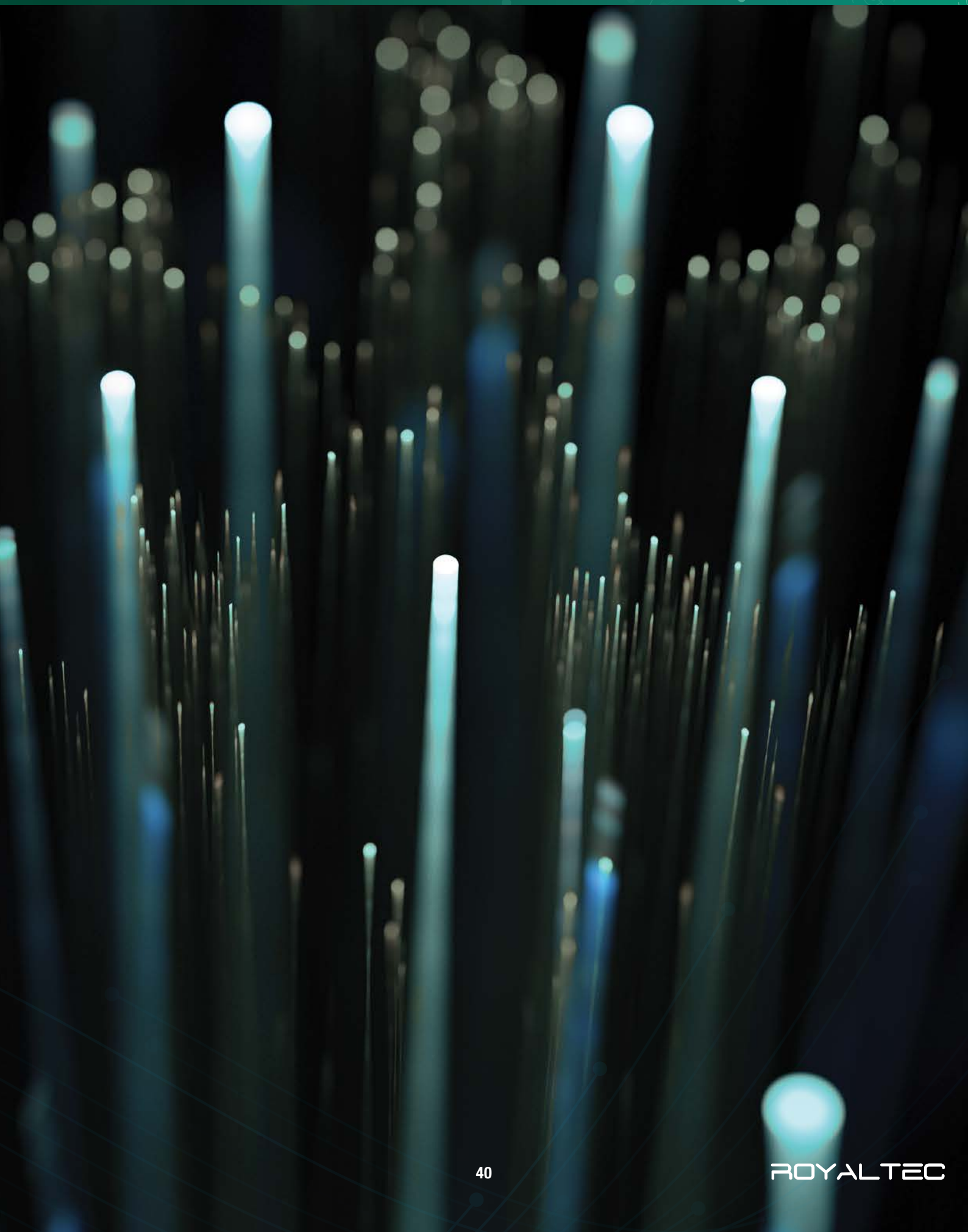
- RoHS Compliant

#### Descriptions

**Product Type** : Cable Organizing Kit  
**Color** : Black

# Fiber CABLING SYSTEM

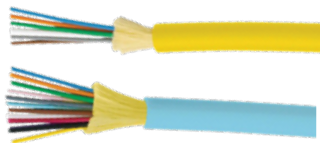
# Fiber Optical Solutions



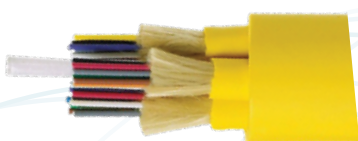
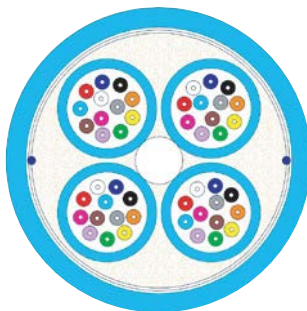
## Fiber Optic Cable

### Opti-Core™ Fiber Optic Cable INDOOR , Tight Buffered

Fiber optic distribution and interconnect cables shall be suitable for indoor applications, complying with UL standards for Riser and IEC standards for low smoke / zero halogen (LSZH). It shall have options for singlemode (OS2) or multimode fibers (OM3 and OM4) to support 10 Gb/s network transmission and beyond. The optical fibers shall be tight-buffered for easy termination with field-installable connectors.



2 to 24-Fiber



48-Fiber

**FLDR<sup>^\*\*Y</sup>**



**FLDL<sup>^\*\*Y</sup>**



### Standard

- UL 1666 (Riser)
- IEC 60332-1 (Flame Retardant)
- IEC 61034 and IEC 60754-2
- RoHS Compliant

### Descriptions

<b>Product Type</b>	: Bulk Fiber Optic Cable
<b>Environment</b>	: Indoor
<b>Aarmor or Non-Aarmor</b>	: Non-Aarmor
<b>Fiber Type</b>	: Singlemode , Multimode
<b>Number of Fibers</b>	: 6, 12, 24, 48
<b>Buffered, Loose Tube or Ribbon</b>	: 900um Tight Buffered
<b>Flammability Rating</b>	: Riser, LSZH
<b>Cable Color</b>	: Yellow , Aqua
<b>Operating Temperature</b>	: -20 °C to 70 °C

### Feature

- 900µm tight buffered fibers are protected by aramid yarns and an outer jacket
- Jacket Color: For all fiber counts, outer jacket is aqua for OM3 and OM4, yellow for OS2
- Flame retardant riser or LSZH jacket provides life safety benefits; meets industry standards for smoke and flame and is ideal for indoor installations
- 900µm tight buffered fiber easy to handle, strip, and connectorize

<sup>^</sup> is fiber type, <sup>\*\*</sup> is fiber count

## Fiber Optic Cable

### Physical & Mechanical properties

Fiber count	6	12	24	48
Nominal outside diameter (mm)	4.8	6.2	8.8	18
Weight (kg/km)	21	32	60	240
Tensile strength (Installation/Short Term) (N)	660	660	1320	1320
Tensile strength (Operation/Long Term) (N)	200	200	400	400
Compressive strength (crush)	500	500	500	1000

### Part Number

#### FLDR<sup>^\*\*</sup>Y

Type	Part No.	Core
OS2	FLDR906Y	6
	FLDR912Y	12
	FLDR924Y	24
	FLDR948Y	48
OM3	FLDRX06Y	6
	FLDRX12Y	12
	FLDRX24Y	24
	FLDRX48Y	48
OM4	FLDRZ06Y	6
	FLDRZ12Y	12
	FLDRZ24Y	24
	FLDRZ48Y	48

#### FLDL<sup>^\*\*</sup>Y

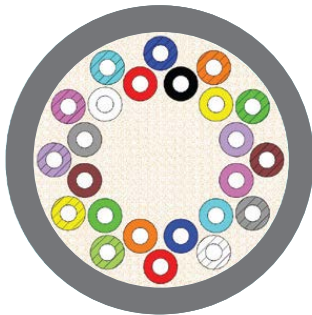
Type	Part No.	Core
OS2	FLDL906Y	6
	FLDL912Y	12
	FLDL924Y	24
	FLDL948Y	48
OM3	FLDLX06Y	6
	FLDLX12Y	12
	FLDLX24Y	24
	FLDLX48Y	48
OM4	FLDLZ06Y	6
	FLDLZ12Y	12
	FLDLZ24Y	24
	FLDLZ48Y	48

<sup>^</sup> is fiber type, <sup>\*\*</sup> is fiber count

## Fiber Optic Cable

### Opti-Core™ Fiber Optic Cable INDOOR/OUTDOOR , All-Dielectric , Tight Buffered

The fibers shall be tight-buffered for easy termination with field-installable connectors. The cables shall be flame rated for use indoors, complying with UL standards for riser and IEC standards for Low Smoke/Zero Halogen (LSZH). The cables shall have UV resistant and water blocking properties for use in outdoor environments. The cables shall have options for singlemode (OS2) or multimode fibers (OM3 and OM4) to support 10 Gb/s network transmission and beyond



**2 to 24-Fiber**

**FLKL<sup>^\*\*</sup>**

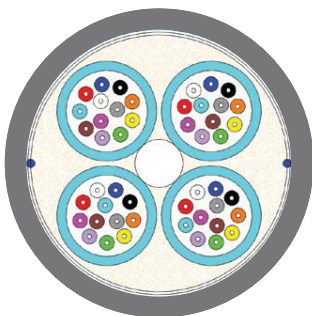


### Standard

- Telcordia GR-409-CORE (Indoor Fiber Optic Cable)
- ISO 11801 (Generic Cabling for Customer Premises)
- UL 1666 (Riser)
- IEC 60332 (Flame Retardant)
- IEC 61034 and IEC 60754-2 (Low Smoke and Zero Halogen) or Zero Halogen to IEC 60754-1
- RoHS Compliant

### Descriptions

<b>Product Type</b>	: Bulk Fiber Optic Cable
<b>Environment</b>	: Indoor/Outdoor
<b>Armor or Non-Armor</b>	: Non-Armored
<b>Fiber Type</b>	: Singlemode , Multimode
<b>Number of Fibers</b>	: 6, 12, 24, 48
<b>Buffered, Loose Tube or Ribbon</b>	: 900um Tight Buffered
<b>Flammability Rating</b>	: LSZH
<b>Cable Color</b>	: Black
<b>Operating Temperature</b>	: -20 °C to 60 °C



**48-Fiber**

### Feature

- 900µm tight buffered fibers are protected by aramid yarns and an outer jacket
- Jacket Color: For all fiber counts, outer jacket is aqua for OM3 and OM4, yellow for OS2
- Flame retardant riser or LSZH jacket provides life safety benefits; meets industry standards for smoke and flame and is ideal for indoor installations
- 900µm tight buffered fiber easy to handle, strip, and connectorize

^ is fiber type, \*\* is fiber count



## Fiber Optic Cable

### Physical & Mechanical properties

Fiber count	6	12	24	48
Nominal outside diameter (mm)	5.3	6.6	8.8	18.3
Weight (kg/km)	32	53	60	253
Tensile strength (Installation/Short Term) (N)	660	660	1320	1320
Tensile strength (Operation/Long Term) (N)	200	200	400	400
Compressive strength (crush)	1000	1000	1000	1000

### Part Number

#### FLKL<sup>^\*\*</sup>

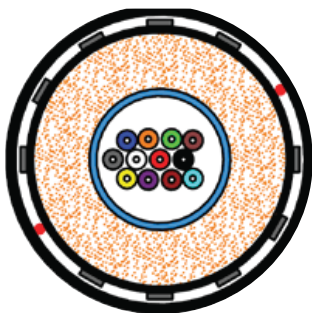
Type	Part No.	Core
OS2	FLKL906	6
	FLKL912	12
	FLKL924	24
	FLKL948	48
OM3	FLKLX06	6
	FLKLX12	12
	FLKLX24	24
	FLKLX48	48
OM4	FLKLZ06	6
	FLKLZ12	12
	FLKLZ24	24
	FLKLZ48	48

<sup>^</sup> is fiber type, <sup>\*\*</sup> is fiber count

## Fiber Optic Cable

### The Opti-Core® Gel-Free LSZH Indoor-Outdoor All-Dielectric Fiber Optic Cable

The fiber cable shall have a loose tube, all-dielectric (non-conductive) and comply with common industry standards for indoor and outdoor applications. To withstand harsh outdoor environments, the cable shall have UV resistance and gel-free water-blocking features. To meet indoor safety requirements, the cable shall use materials that comply with IEC standards for low smoke and zero halogen content. The cable shall have options for singlemode (OS2) or multimode fibers (OM3, OM4) to support 10 Gb/s network transmission.



**2 to 12-Fiber**



**24 - 96-Fiber**

FLRL<sup>^\*\*</sup>



### Standard

- TIA/EIA-568.3 (Telecommunications Cabling)
- ANSI/ICEA S-104-696 (Indoor-Outdoor Fiber Cable, mechanical and environmental)
- Outer jacket material complies with IEC 61034, IEC 60754-1&2.
- IEC 60754 -1&2 (Low Smoke and Zero Halogen)
- Telcordia GR-409 and GR-20 (Indoor and Outside Plant Fiber Cable)
- IEC 60332-3-24 Category C (Vertical Flame Spread)
- IEC 60794-1-2-F5C (Water Penetration)

### Descriptions

<b>Product Type</b>	: Bulk Fiber Optic Cable
<b>Environment</b>	: Indoor/Outdoor
<b>Armor or Non-Armor</b>	: Non-Armored
<b>Fiber Type</b>	: Singlemode , Multimode
<b>Number of Fibers</b>	: 6, 12, 24, 48, 96
<b>Buffered, Loose Tube or Ribbon</b>	: 250um Loose Tube
<b>Flammability Rating</b>	: LSZH
<b>Cable Color</b>	: Black
<b>Operating Temperature</b>	: -40 °C to 70 °C

### Feature

- Black outer jacket is UV-resistant Withstands exposure to outdoor sunlight and meets light absorption requirement defined by GR-20
- Dry water-blocking technology Swells to prevent moisture ingress and allows rapid cable preparation without messy gel
- Flame retardant LSZH jacket Provides life safety benefits, is halogen free and meets industry standards for low smoke generation
- Robust outer sheath and strength members Provide mechanical durability

<sup>^</sup> is fiber type, <sup>\*\*</sup> is fiber count

## Fiber Optic Cable

### Physical & Mechanical properties

Fiber count	6	12	24	48	96
Nominal outside diameter (mm)	7.6	7.6	11	11	12
Weight (kg/km)	69	69	119	119	130
Tensile strength (Installation/Short Term) (N)	1500	1550	2700	2700	2700
Tensile strength (Operation/Long Term) (N)	500	500	900	900	900
Compressive strength (crush)	2200N/100mm				

### Part Number

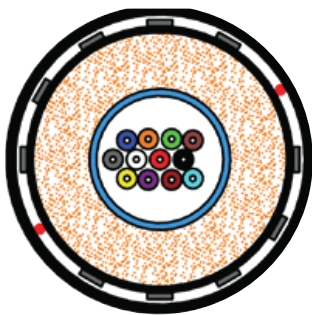
#### FLRL<sup>^\*\*</sup>

Type	Part No.	Core
OS2	FLRL906	6
	FLRL912	12
	FLRL924	24
	FLRL948	48
	FLRL996	96
OM3	FLRLX06	6
	FLRLX12	12
	FLRLX24	24
	FLRLX48	48
	FLRLX96	96
OM4	FLRLZ06	6
	FLRLZ12	12
	FLRLZ24	24
	FLRLZ48	48
	FLRLZ96	96

## Fiber Optic Cable

### The Opti-Core® Gel-Free Indoor/Outdoor Armored Cable

Fiber Optic Indoor/Outdoor Interlocking Armored. The cable construction provides UV resistance, water-blocking, high density and easy installation in outdoor applications and entrance facilities. Interlocking aluminum armor eliminates the need for inner duct or conduit to provide a smaller crush resistant pathway for improved design flexibility and lower installed cost. This cable is available with OS2 Singlemode, the highest quality OM3 and OM4 laser optimized fiber to support 10 Gb/s applications while maintaining compatibility with existing 50µm multimode systems. RoHS compliant singlemode and multimode cable.



2 to 12 Fiber

FL7L<sup>^\*\*</sup>



### Standard

- TIA/EIA-568.3
- ROHS Compliant
- ANSI/ICEA S-104-696 (mechanical and environmental)
- IEC 60332-3-24 Category C (Vertical Flame Spread)
- Telcordia GR-409, Telcordia GR-20
- IEC 61034 and IEC 60754-1 & 2
- IEC 60794-1-2-F5C

### Descriptions

<b>Product Type</b>	: Bulk Fiber Optic Cable
<b>Environment</b>	: Indoor/Outdoor
<b>Armor or Non-Armor</b>	: Armored
<b>Fiber Type</b>	: Singlemode , Multimode
<b>Number of Fibers</b>	: 6, 12, 24, 48, 96
<b>Buffered, Loose Tube or Ribbon</b>	: 250um Loose Tube
<b>Flammability Rating</b>	: LSZH
<b>Cable Color</b>	: Black
<b>Operating Temperature</b>	: -40 °C to 70 °C



24 - 96

### Feature

- construction provides UV resistance, water-blocking, high density and easy installation in outdoor applications and entrance facilities
- Armor Corrugated steel tape. 2 ripcords beneath
- Corrugated steel tape armor provides very good rodent protection and eliminates the need for inner duct or conduit
- Loose Tube Up to twelve 250µm coated fibers per tube
- Outer sheath LSZH, Black

<sup>^</sup> is fiber type, <sup>\*\*</sup> is fiber count

## Fiber Optic Cable

### Physical & Mechanical properties

Fiber count	6	12	24	48	96
Nominal outside diameter (mm)	9.1	9.1	12.4	12.4	13.6
Weight (kg/km)	103	103	151	151	172
Tensile strength (Installation/Short Term) (N)	1500	1500	2700	2700	2700
Tensile strength (Operation/Long Term) (N)	500	500	900	900	900
Compressive strength (crush)	2200N/100mm				

### Part Number

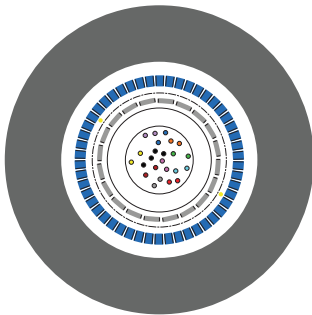
#### FL7L<sup>^</sup>\*\*

Type	Part No.	Core
OS2	FL7L906	6
	FL7L912	12
	FL7L924	24
	FL7L948	48
	FL7L996	96
OM3	FL7LX06	6
	FL7LX12	12
	FL7LX24	24
	FL7LX48	48
	FL7LX96	96
OM4	FL7LZ06	6
	FL7LZ12	12
	FL7LZ24	24
	FL7LZ48	48
	FL7LZ96	96

## Fiber Optic Cable

### The Opti-Core™ Gel-Filled Armored Central Tube Outside Plant Cable

The fiber cable shall contain up to 24 fibers and have a loose tube construction that is water-blocked, UV resistant and armored for harsh outdoor environmental demands. In order to be compact and lightweight, the cable shall use a central loose tube design. It shall comply with common industry standards for outside plant applications and have options for singlemode (OS2) or multimode fibers (OM3, OM4) to support 10 Gb/s network transmission.



6 to 24-Fiber

FLSN<sup>^\*\*</sup>



### Standard

- IEC 60794-3
- IEEE 802.3ae 10 GbE
- RoHS Compliant

### Descriptions

<b>Product Type</b>	: Bulk Fiber Optic Cable
<b>Environment</b>	: Outside Plant
<b>Armor or Non-Armor</b>	: Armored
<b>Fiber Type</b>	: Singlemode , Multimode
<b>Number of Fibers</b>	: 6, 12, 24
<b>Buffered, Loose Tube or Ribbon</b>	: 250um Loose Tube
<b>Flammability Rating</b>	: Not Rated
<b>Cable Color</b>	: Black
<b>Operating Temperature</b>	: -40 °C to 70 °C

### Feature

- Gel-filled tube and water-blocking yarn Blocks water from entering the cable and damaging the optical fibers
- Corrugated steel tape armor Provides crush resistance
- UV Resistant outer jacket Resists degradation due to sunlight exposure
- Central tube design Allows smaller cable diameter and lighter weight versus stranded tube design

<sup>^</sup> is fiber type, <sup>\*\*</sup> is fiber count

## Fiber Optic Cable

### Physical & Mechanical properties

Fiber count	6	12	24
Nominal outside diameter (mm)	8.3		
Weight (kg/km)	90		
Tensile strength (Installation/Short Term) (N)	2670		
Tensile strength (Operation/Long Term) (N)	800		
Compressive strength (crush)	2200 N/100mm		

### Part Number

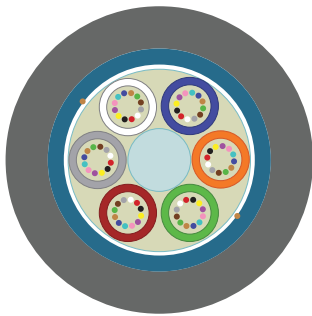
#### FLSN<sup>^\*\*</sup>

Type	Part No.	Core
OS2	FLSN906	6
	FLSN912	12
	FLSN924	24
OM3	FLSNX06	6
	FLSNX12	12
	FLSNX24	24
OM4	FLSNZ06	6
	FLSNZ12	12
	FLSNZ24	24

## Fiber Optic Cable

### The Opti-Core™ Gel-Filled Armored Outside Plant Cable

Opti-Core™ Gel-Filled Armored (OSP) Cable offers gel-filled water-blocking technology, UV resistance, and high density to provide standards compliance and flexibility for outdoor use. Opti-Core™ Armored OSP Cable has a single outer jacket and corrugated steel armor, (SASJ) to provide superior crush resistance for direct burial applications. It also meets or exceeds the performance requirements of Telcordia GR-20, Issue 2 and ICEA 640 to withstand harsh outdoor environmental demands. Opti-Core™ Armored OSP Cable is available in singlemode (meets OS2 ITU-T G.652.D standards) OM1 multimode, and bend-insensitive OM2, OM3, and OM4 fiber types. All Opti-Core™ Fiber Optic Cable is RoHS compliant.



48 - 96-Fiber

#### FLWN9\*\*



#### FLWL9\*\*Y/N



### Standard

- IEC/EN 60794-3
- Telcordia GR-20
- ICEA 640
- RoHS compliant
- IEC/EN 60793-2-50 Cat. B.1.3
- ITU-T G.652.D and C,B, A
- IEEE 802.3-2002 incl 802.3ae
- ISO/IEC 11801:2002, cat. OS2

### Descriptions

<b>Product Type</b>	: Bulk Fiber Optic Cable
<b>Environment</b>	: Outside Plant
<b>Armor or Non-Armor</b>	: Armored
<b>Fiber Type</b>	: Singlemode
<b>Number of Fibers</b>	: 48, 96
<b>Buffered, Loose Tube or Ribbon</b>	: 250um Loose Tube
<b>Flammability Rating</b>	: Not Rated
<b>Cable Color</b>	: Black
<b>Operating Temperature</b>	: -40 °C to 70 °C

### Feature

- Fiber Optic Cable offers gel-filled water-blocking technology, UV resistance
- Provide standards compliance and flexibility for outdoor use
- Core wrapping: polyester tape
- Well suited for duct or direct burial applications
- Corrugated steel armor
- Central Strength member (CSM): glass fibre reinforced plastic material (FRP) with up-coating when needed
- Armour: corrugated steel tape. 2 ripcords under the tape
- Outer Sheath: LSZH, Riser



### Fiber Optic Cable

#### Physical & Mechanical properties

Fiber count	48	96
Nominal outside diameter (mm)	12	14.5
Weight (kg/km)	148, 196	207, 245
Tensile strength (Installation/Short Term) (N)	2700 N	
Tensile strength (Operation/Long Term) (N)	1700 N	
Installation Bend Radius (mm)	256	354
Long-Term Bend Radius (mm)	120	145
Compressive strength (crush)	220 N/cm	

#### Part Number

##### FLWN9\*\*

Type	Part No.	Core
OS2	FLWN948	48
	FLWN996	96

##### FLWL9\*\*Y/N

Type	Part No.	Core
OS2	FLWL948Y/N	48
	FLWL996Y/N	96

\*\* is fiber count

## Netkey® Fiber Optic Accessories

### Patch Panel

#### The Opticom® Pre-Loaded Fiber Drawers

shall provide a preconfigured, ready-to-install system for managing fiber optic terminations, connections and patching in a 1 RU rack mount enclosure. The pre-loaded enclosure accommodates both field termination and field splicing, and supports trunk cable entry via PG style glands, blown fibere glands and metric knockouts with rubber grommets. The pre-loaded enclosure is a two-piece design with a slide-out drawer for full access to all fiber terminations, easy moves, adds and changes and simple installation. The enclosure has silk-screened white areas adjacent to each adapter for individual Fiber Channel labelling and a similar silk-screen area for overall enclosure labelling. The enclosure has integral mounting brackets suitable for installation in any 19 inches wide EIA-310/IEC 60297 compatible rack or cabinet.



#### Descriptions

<b>Product Type</b>	: Fiber Optic Drawer
<b>Fiber Type</b>	: Singlemode , Multimode
<b>Material</b>	: Metal
<b>Overall Width (mm)</b>	: 482.6
<b>Color</b>	: Black
<b>Rack Unit</b>	: 1U
<b>Overall Depth (mm)</b>	: 308.2
<b>Overall Height (mm)</b>	: 43.9



#### FD1W\*\*BUD^^Z

Opticom® Pre-Loaded Fiber Drawers Singlemode

#### Singlemode

Conector	Part No.	Port
SC	FD1W6BUDSCZ	12
	FD1W12BUDSCZ	24
	FD1W24BUDSCZ	48
LC	FD1W12BUDLCZ	24
	FD1W24BUDLCZ	48



#### FD1W\*\*AQD^^Z

Opticom® Pre-Loaded Fiber Drawers Multimode

#### Multimode

Conector	Part No.	Port
SC	FD1W6AQDSCZ	12
	FD1W12AQDSCZ	24
	FD1W24AQDSCZ	48
LC	FD1W12AQDLCZ	24
	FD1W24AQDLCZ	48

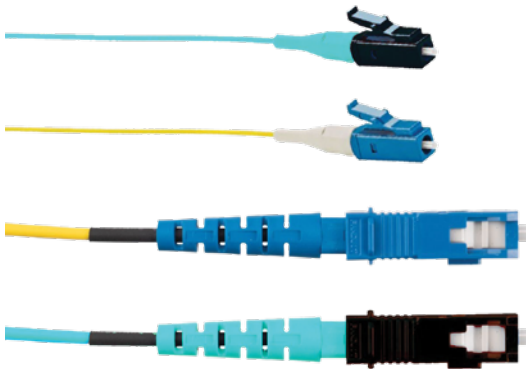
\*\* is number of port, ^^ is connector type

## Netkey® Fiber Optic Accessories

### Pigtail

#### The Fiber Optic Patch Pigtails

NetKey® Fiber Pigtails include simplex LC, SC, and ST on one end, and open (un-terminated) on the other end. Pigtails meet requirements of TIA/EIA-568-C.3-1. The fiber connectors are FOCIS compliant or compatible and meet the requirements of TIA/EIA-455-21A. Quality control reference label provides lifetime traceability of test data.



#### NKFP^1BN\*NNM001

NetKey® Fiber Optic Pigtails

#### Standard

- TIA/EIA 568-C.3-1
- ISO/IEC 61755-3-1 IEC-61754-7 (International)
- TIA-604-2-A, -3-A, and -10-A, FOCIS -2, -3, and -10
- RoHS Compliant

#### Descriptions

<b>Product Type</b>	: Fiber optic pigtail
<b>Fiber Type</b>	: Singlemode , Multimode
<b>Number of Fibers</b>	: 1
<b>Connector 2 Type</b>	: Unterminated
<b>Fiber Diameter (µm)</b>	: 9 , 50
<b>Overall Length (m)</b>	: 1
<b>Cable Color</b>	: Yellow , Blue

Fiber type	Part No.	Connector
OS2	NKFP91BN1NNM001	LC
	NKFP91BN3NNM001	SC
OM3	NKFPX1BN1NNM001	LC
	NKFPX1BN3NNM001	SC
OM4	NKFPZ1BN1NNM001	LC

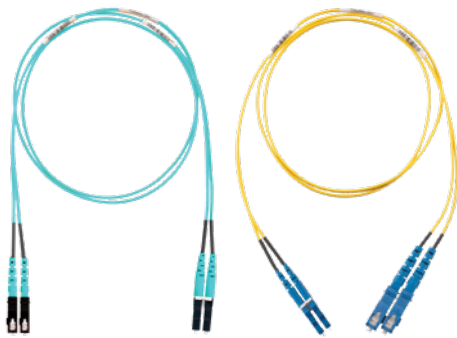
^ is fiber type, \*\* is connector type

## Netkey® Fiber Optic Accessories

### Patch cord

#### The Fiber Optic Patch Cords

NetKey® Fiber Optic Patch Cords include duplex LC and SC connectors on both ends. Patch cords meet requirements of TIA/EIA-568-C.3-1. The fiber connectors are FOCIS compliant or compatible and meet the requirements of TIA/EIA-455-21A. Quality control reference label provides lifetime traceability of test data.



**NKFP^2\*\*L\*SM0^^**

NetKey® Fiber Optic Patch Cords

#### Standard

- TIA/EIA 568-C.3-1
- ISO/IEC 61755-3-1 IEC-61754-7 (International),
- TIA-604-2-A, -3-A, and -10-A, FOCIS -2, -3, and -10
- RoHS Compliant

#### Descriptions

<b>Product Type</b>	: Patch Cord
<b>Fiber Type</b>	: Singlemode , Multimode
<b>Number of Fibers</b>	: 2
<b>Connector Type</b>	: LC Duplex , SC Duplex
<b>Ferrule Material</b>	: Zirconia Ceramic
<b>Flammability Rating</b>	: LSZH
<b>Fiber Diameter (µm)</b>	: 9 , 50
<b>Cable Color</b>	: Yellow , Aqua
<b>Length (m)</b>	: 3 , 5 , 10

#### Lenght 3 Meters

Fiber type	Part No.	Connector
OS2	NKFP92ELLLSM003	LC - LC
	NKFP92ELLSSM003	LC - SC
	NKFP923LSSSM003	SC - SC
OM3	NKFPX2ELLLSM003	LC - LC
	NKFPX2ELLSSM003	LC - SC
	NKFPX23LSSSM003	SC - SC
OM4	NKFPZ22LLLSM003	LC - LC

#### Lenght 5 Meters

Fiber type	Part No.	Connector
OS2	NKFP92ELLLSM005	LC - LC
	NKFP92ELLSSM005	LC - SC
	NKFP923LSSSM005	SC - SC
OM3	NKFPX2ELLLSM005	LC - LC
	NKFPX2ELLSSM005	LC - SC
	NKFPX23LSSSM005	SC - SC
OM4	NKFPZ22LLLSM005	LC - LC

#### Lenght 10 Meters

Fiber type	Part No.	Connector
OS2	NKFP92ELLLSM010	LC - LC
	NKFP92ELLSSM010	LC - SC
	NKFP923LSSSM010	SC - SC
OM3	NKFPX2ELLLSM010	LC - LC
	NKFPX2ELLSSM010	LC - SC
	NKFPX23LSSSM010	SC - SC
OM4	NKFPZ22LLLSM010	LC - LC

^ is fiber type, \*\* is cable type, \* is conector type, ^^ is lenght of cable

## Pan-Net® Fiber Optic Accessories

### Patch Panel

#### The Opticom® Fiber Optic Patch Panels and Trays

Opticom® Rack Mount Fiber Trays and Fiber Adapter Patch Panels provide a flexible and modular system for managing fiber termination, connections, and patching for all applications and offer the industry's highest patch field density and fiber counts for all fiber termination methods. The high capacity, high-density solution maximizes rack space utilization and reduces floor space requirements for lower overall system costs.



**FMT1**

Opticom® Fiber Optic Tray

#### Descriptions

<b>Product Type</b>	: Fiber Tray
<b>Number of Rack Units</b>	: 1 RU
<b>Mounting</b>	: Installation in 19" wide EIA-310 racks
<b>Overall Width (mm)</b>	: 482.2
<b>Color</b>	: Black
<b>Overall Depth (mm)</b>	: 283.4
<b>Overall Height (mm)</b>	: 44.9
<b>Standards Met</b>	: RoHS compliant
<b>Use with</b>	: CFAPPBL1 (Fiber Adapter Patch Panel 1 RU)



**CFAPPBL1**

Opticom® Fiber Optic Rear Loading Adapter Panel

#### Descriptions

<b>Product Type</b>	: Rear Loading Adapter Panel
<b>Number of Ports</b>	: 4
<b>Standards Met</b>	: RoHS compliant
<b>Color</b>	: Black

## Pan-Net® Fiber Optic Accessories

### Rack Mount Enclosure

#### The Opticom® Fiber Rack Mount Enclosure (FRE1U)

The Opticom Fiber Rack Mount Enclosure (FRE1U) shall house, organize manage, and protect fiber optic cable, terminations, cassettes, splices, connectors, and patch cords. The FRE1U accommodates all Panduit pre-terminated MPO cassettes, fiber adapter panels (FAP), associated trunk cables, connectors, and patch cords, with integral cable management and bend radius control for transition to cable managers. Constructed out of steel material, the FRE1U provides full front access with a pull-out drawer. A front door and rear cover enable cabling, connector access, and installation with easy open access in the front, which simplified move, add, and changes of fiber patch cords without moving the drawer. Multiple knockouts at the rear allow for a variety of trunk cable entry points.



#### FRE1UBL

Opticom® Rack Mount Enclosure

#### Descriptions

<b>Product Type</b>	: Fiber Enclosure with Sliding Tray
<b>Fiber Type</b>	: Singlemode, Multimode
<b>Material</b>	: Steel
<b>Number of Rack Units</b>	: 1
<b>Standards Met</b>	: TIA
<b>Color</b>	: Black

### Fiber Adapter Panel Blank



#### FSC24

Opticom® Fiber Splice Holder

#### Opticom® Fiber Splice Holder

This fiber splice holder accommodates and protects up to 24 fusion splices. It comes with labels, clear cover, and adhesive mount and can be used with any Panduit® Opticom® Enclosure.

#### Descriptions

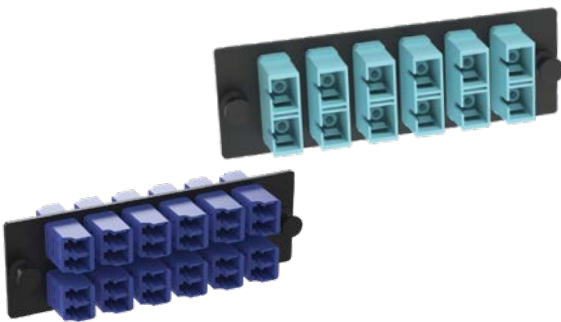
<b>Product Type</b>	: Fiber Optic Splice Module Holder
<b>Color</b>	: Black
<b>Standards Met</b>	: RoHS compliant
<b>Application</b>	: Fusion Splice Holder

## Pan-Net® Fiber Optic Accessories

### Fiber Adapter Panel

#### The Opticom® Fiber Adapter Panels

Fiber adapter panels contain TIA/EIA-604 FOCIS compliant or compatible simplex or duplex fiber optic adapters and meet or exceed TIA/EIA-568-C.3 requirements. Fiber adapter panels include horizontal and vertical MPO adapters, LC, keyed LC, SC, ST, FC, MT-RJ or E-2000 fiber optic adapters. Fiber optic adapters include phosphor bronze or zirconia ceramic split sleeves to fit specific network requirements. LC and SC adapter housing colors follow the TIA/EIA-568-C.3 suggested color identification scheme. Multimedia modular panels allow customization of installation for applications requiring integration of fiber optic and copper cables. Blank fiber adapter panels reserve fiber adapter panel space for future use. All fiber adapter panels snap quickly into the front of fiber optic patch panels and enclosures for easy network deployment or moves, adds, and changes.



**FAP\*W\*\*D^^Z**

Opticom® Fiber Adapter Panels

#### Descriptions

<b>Product Type</b>	: Front Loading Adapter Panel
<b>Fiber Type</b>	: Singlemode, Multimode
<b>Connection Type</b>	: LC, SC
<b>Material</b>	: Zirconia Ceramic
<b>Adapter Color</b>	: Blue, Aqua
<b>Standards Met</b>	: RoHS compliant. Meets or exceeds TIA/EIA-568-C.3 requirements
<b>Number of Ports</b>	: 6, 12
<b>Color</b>	: Black

Fiber type	Part No.	Connector	Port
OS2	FAP6WBUDLCZ	LC	12
	FAP12WBUDLCZ	LC	24
	FAP6WBUDSCZ	SC	12
OM3 / OM4	FAP6WAQDLCZ	LC	12
	FAP12WAQDLCZ	LC	24
	FAP6WAQDSCZ	SC	12

\* is Number of Duplex \*\* is fiber type, ^^ is connector type

### Pan-Net® Fiber Optic Accessories

#### Fiber Slack Spool Manager



##### FMS1

The Opticom® fiber slack spool manager

#### The Opticom® Fiber Slack Spool Manager

The Opticom® fiber slack spool manager manages fiber slack in Opticom 1 RU Rack Mount Fiber Enclosures. Fiber retention tabs and fingers maintain minimum bend radius control, while rounded edges eliminate the risk of snagging and stress.

#### Descriptions

<b>Product Type</b>	: Slack Spool Manager
<b>Material</b>	: Plastic
<b>Standards Met</b>	: RoHS compliant
<b>Color</b>	: Black

#### Fiber Adapter Panel Blank



##### FAPB

Opticom® Fiber Adapter Panel Blank

#### The Opticom® Fiber Adapter Panel Blank

The Opticom® blank fiber adapter panel is used to reserve space for future use. The blanking panel is plastic and is black in color.

#### Descriptions

<b>Product Type</b>	: Front Loading Adapter Panel
<b>Material</b>	: Plastic
<b>Standards Met</b>	: RoHS compliant. Meets or exceeds TIA/EIA-568-C.3 requirements
<b>Application</b>	: Blank Fiber Adapter Panel for OptiCom Patch Panels and Enclosures
<b>Color</b>	: Black

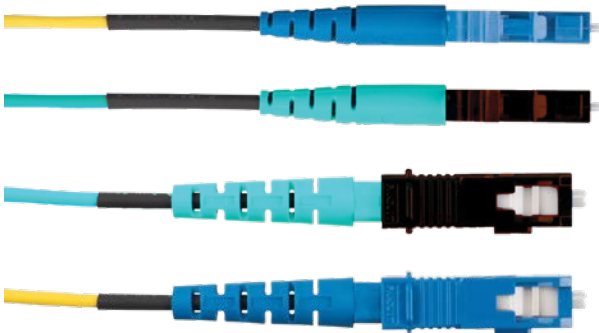


## Pan-Net® Fiber Optic Accessories

### Pigtail

#### The Opti-Core® Fiber Optic Pigtails

The Opti-Core® Fiber Pigtails include simplex LC and SC on one end, and open (un-terminated) on the other end. Pigtails meet requirements of TIA/EIA-568.3-D. The fiber connectors are FOCIS compliant or compatible and meet the requirements of TIA/EIA-455-21A. Quality control reference label provides lifetime traceability of test data.



#### F^1BN\*NNNSNM001

Opti-Core® Fiber Optic Pigtails

#### Standard

- TIA 568.3-D
- LSZH IEC 60332-1-2 , IEC 60332-3-24 , IEC 61034-2
- TIA-604-3 (FOCIS-3) , TIA-604-5 (FOCIS-10)
- IEC 60793-2-10 Ed 6
- RoHS Compliant

#### Descriptions

<b>Product Type</b>	: Fiber optic pigtail
<b>Fiber Type</b>	: Singlemode , Multimode
<b>Number of Fibers</b>	: 1
<b>Connector 2 Type</b>	: Unterminated
<b>Fiber Diameter (µm)</b>	: 9 , 50
<b>Overall Length (m)</b>	: 1
<b>Cable Color</b>	: Yellow , Blue

Fiber type	Part No.	Connector
OS2	F91BN1NNNSNM001	LC
	F91BN3NNNSNM001	SC
OM3	FX1BN1NNNSNM001	LC
	FX1BN3NNNSNM001	SC
OM4	FZ1BN1NNNSNM001	LC
	FZ1BN3NNNSNM001	SC

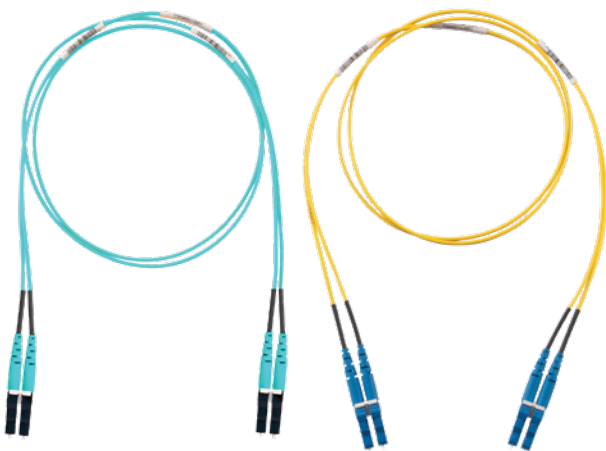
^ is fiber type, \* is connector type

## Pan-Net® Fiber Optic Accessories

### Patch cord

#### Fiber Optic Patch Cords

NetKey® Fiber Optic Patch Cords include duplex LC and SC connectors on both ends. Patch cords meet requirements of TIA/EIA-568.3-D. The fiber connectors are FOCIS compliant or compatible and meet the requirements of TIA/EIA-455-21A. Quality control reference label provides lifetime traceability of test data.



**F<sup>^</sup>2\*\*L\*N\*NSNM0^^**

Opti-Core® Fiber Optic Patch Cords

#### Standard

- TIA 568.3-D
- LSZH IEC 60332-1-2 , IEC 60332-3-24 , IEC 61034-2
- TIA-604-3 (FOCIS-3) , TIA-604-5 (FOCIS-10)
- IEC 60793-2-10 Ed 6
- RoHS Compliant

#### Descriptions

<b>Product Type</b>	: Patch Cord
<b>Fiber Type</b>	: Singlemode , Multimode
<b>Number of Fibers</b>	: 2
<b>Connector Type</b>	: LC Duplex , SC Duplex
<b>Ferrule Material</b>	: Zirconia Ceramic
<b>Flammability Rating</b>	: LSZH
<b>Fiber Diameter (µm)</b>	: 9 , 50
<b>Cable Color</b>	: Yellow , Aqua
<b>Length (m)</b>	: 3 , 5 , 10 , 15 , 20

#### Lenght 3 Meters

Fiber type	Part No.	Connector
OS2	F92ELLNLNSNM003	LC - LC
	F923LSNSNSNM003	SC- SC
	F92ELLNSNSNM003	LC - SC
OM3	FX2ELLNLNSNM003	LC - LC
	FX23LSNSNSNM003	SC -SC
	FX2ELLNSNSNM003	LC - SC
OM4	FZ2ELLNLNSNM003	LC - LC
	FZ23LSNSNSNM003	SC-SC
	FZ2ELLNSNSNM003	LC - SC

#### Lenght 5 Meters

Fiber type	Part No.	Connector
OS2	F92ELLNLNSNM005	LC - LC
	F923LSNSNSNM005	SC- SC
	F92ELLNSNSNM005	LC - SC
OM3	FX2ELLNLNSNM005	LC - LC
	FX23LSNSNSNM005	SC -SC
	FX2ELLNSNSNM005	LC - SC
OM4	FZ2ELLNLNSNM005	LC - LC
	FZ23LSNSNSNM005	SC-SC
	FZ2ELLNSNSNM005	LC - SC

^ is fiber type, \*\* is cable type, \* is conector type, ^^ is lenght of cable

## Pan-Net® Fiber Optic Accessories

### Patch cord

#### Lenght 10 Meters

Fiber type	Part No.	Connector
OS2	F92ELLNLNSNM010	LC - LC
	F923LSNSNSNM010	SC- SC
	F92ELLNSNSNM010	LC - SC
OM3	FX2ELLNLNSNM010	LC - LC
	FX23LSNSNSNM010	SC -SC
	FX2ELLNSNSNM010	LC - SC
OM4	FZ2ELLNLNSNM010	LC - LC
	FZ23LSNSNSNM010	SC-SC
	FZ2ELLNSNSNM010	LC - SC

#### Lenght 15 Meters

Fiber type	Part No.	Connector
OS2	F92ELLNLNSNM015	LC - LC
	F923LSNSNSNM015	SC- SC
	F92ELLNSNSNM015	LC - SC
OM3	FX2ELLNLNSNM015	LC - LC
	FX23LSNSNSNM015	SC -SC
	FX2ELLNSNSNM015	LC - SC
OM4	FZ2ELLNLNSNM015	LC - LC
	FZ23LSNSNSNM015	SC-SC
	FZ2ELLNSNSNM015	LC - SC

#### Lenght 20 Meters

Fiber type	Part No.	Connector
OS2	F92ELLNLNSNM020	LC - LC
	F923LSNSNSNM020	SC- SC
	F92ELLNSNSNM020	LC - SC
OM3	FX2ELLNLNSNM020	LC - LC
	FX23LSNSNSNM020	SC -SC
	FX2ELLNSNSNM020	LC - SC
OM4	FZ2ELLNLNSNM020	LC - LC
	FZ23LSNSNSNM020	SC-SC
	FZ2ELLNSNSNM020	LC - SC

#### Lenght 25 Meters

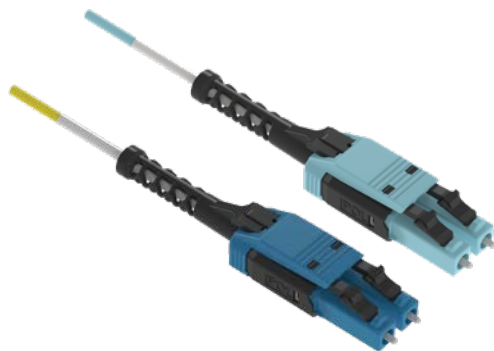
Fiber type	Part No.	Connector
OS2	F92ELLNLNSNM025	LC - LC
	F923LSNSNSNM025	SC- SC
	F92ELLNSNSNM025	LC - SC
OM3	FX2ELLNLNSNM025	LC - LC
	FX23LSNSNSNM025	SC -SC
	FX2ELLNSNSNM025	LC - SC
OM4	FZ2ELLNLNSNM025	LC - LC
	FZ23LSNSNSNM025	SC-SC
	FZ2ELLNSNSNM025	LC - SC

## Pan-Net® Fiber Optic Accessories

### Patch Cords (Push-Pull)

#### The Opti-Core® LC Uniboot Pull-Boot Duplex Fibre Optic Patch Cords

The Opti-Core Pull-Boot LC Duplex Fiber Optic Patch Cords meet the high performance essential for today's high speed systems with a connector that allows easy polarity change in the field without any mechanical components that can be unfastened or misplaced. In addition, the 2.0mm, 2-fiber round unitary cable construction reduces cable volume by 50% making the patch cords ideal for reducing cable congestion in extremely high density patch fields. These patch cords are available in plenum (OFNP) or low smoke zero halogen (LSZH) rated jacket materials along with OM4, OM4+, OM5, and OS2 fiber types. The connectors are available in UPC (multimode and singlemode)



**F^2RLU1U1ONM0^^**

Opti-Core® LC Uniboot Pull-Boot Duplex Fibre Optic Patch Cords

#### Standard

- Meets or exceeds ISO/IEC 11801
- TIA/EIA-568-C.3
- TIA-604-3 (FOCIS-3), TIA-604-10 (FOCIS-10)
- meet the requirements of Directive 2002/95/EC.
- RoHS Compliant

#### Descriptions

<b>Product Type</b>	: LC Patch Cord
<b>Fiber Type</b>	: OS2 , OM4
<b>Number of Fibers</b>	: 2
<b>Connector Type</b>	: LC - LC Duplex
<b>Flammability Rating</b>	: LSZH
<b>Outer Diameter</b>	: 2 mm
<b>Connector durability</b>	: 500 cycles
<b>Bend Radius, Min</b>	: 20mm
<b>Cable Color</b>	: Yellow , Aqua

#### Cable Length 3 Meters

Part No.	Fiber type
F92RLU1U1ONM003	OS2
FZ2RLU1U1ONM003	OM4

#### Cable Length 5 Meters

Part No.	Fiber type
F92RLU1U1ONM005	OS2
FZ2RLU1U1ONM005	OM4

#### Cable Length 10 Meters

Part No.	Fiber type
F92RLU1U1ONM010	OS2
FZ2RLU1U1ONM010	OM4

#### Cable Length 15 Meters

Part No.	Fiber type
F92RLU1U1ONM015	OS2
FZ2RLU1U1ONM015	OM4

#### Cable Length 20 Meters

Part No.	Fiber type
F92RLU1U1ONM020	OS2
FZ2RLU1U1ONM020	OM4

#### Cable Length 25 Meters

Part No.	Fiber type
F92RLU1U1ONM025	OS2
FZ2RLU1U1ONM025	OM4

^ is fiber type, ^^ is length of cable

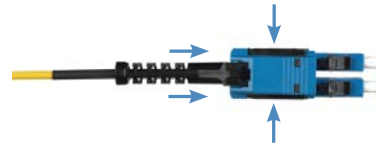
### Pan-Net® Fiber Optic Accessories

#### changing polarity: lc duplex uniboot fiber optic patch cords

**1** WHEN DOTS ON HOUSING ARE MATCHING COLOR THE CONNECTOR INDICATES STRAIGHT THROUGH (A-B)



**2** HOLD THE HOUSING AND PUSH THE BOOT FORWARD TOWARD THE CONNECTOR



**3** ROTATE BOTH CONNECTORS 180°



**4** ROTATE THE CONNECTOR BODY 180°



**5** PUSH THE OUTER HOUSING FORWARD UNTIL IT CLICKS, LOCKING INTO POSITION



**6** POLARITY IS CHANGED INTO PAIR FLIPPED (A-A) WHEN THE DOTS HAVE DIFFERENT COLORS



## Fiber Optic Trunk Cable Assemblies

### The QuickNet™ LSZH Trunk Cable Assemblies

Trunk Cable Assemblies shall allow for rapid deployment of high-density permanent links in a single assembly for data center applications requiring quick infrastructure deployment, such as main, horizontal, and zone distribution areas. These trunk cable assemblies shall optimize cable routing requirements to ensure efficient use of pathway space and significantly reduce installation time and cost. QuickNet™ Trunk Cable Assemblies are built with modular MPO connectivity and provide compatibility, flexibility and system performance in all permanent link applications. All trunk cable assemblies are factory terminated and tested to deliver verified optical performance and reliability for improved network integrity at speeds of 10/25/40/50/100G and beyond.



**FW\*TL55Y005M^^^**

QuickNet™ LSZH Trunk Cable Assemblies

### Standard

- ISO/IEC 11801, TIA/EIA-568-C.3
- TIA-604-5 (FOCIS-5)
- TIC/EIA-568-C.1, GR-409-CORE
- ICEA S-83-596 RoHS Compliant

### Descriptions

<b>Product Type</b>	: MPO Trunk Cable
<b>Cable type</b>	: Indoor Trunk
<b>Fiber Type</b>	: Singlemode , Multimode
<b>Fiber Count</b>	: 12 , 24
<b>Connector Type</b>	: MPO Female - MPO Female
<b>Construction/Performance</b>	: Method B
<b>Cable jacket rating</b>	: LSZH
<b>Cable outside diameter (OD)</b>	: 4.5mm
<b>Jacket color</b>	: Yellow , Aqua
<b>Length (m)</b>	: 5 – 100

### Singlemode

Fiber type	Part No.	Length (m)
OS2	FW9TL55B005M005	5
	FW9TL55B005M010	10
	FW9TL55B005M015	15
	FW9TL55B005M020	20
	FW9TL55B005M025	25
	FW9TL55B005M030	30
	FW9TL55B005M035	35
	FW9TL55B005M040	40
	FW9TL55B005M045	45
	FW9TL55B005M050	50
	FW9TL55B005M055	55
	FW9TL55B005M060	60
	FW9TL55B005M065	65
	FW9TL55B005M070	70
	FW9TL55B005M075	75
	FW9TL55B005M080	80

### Multimode

Fiber type	Part No.	Length (m)
OM4	FWZTL55Y005M005	5
	FWZTL55Y005M010	10
	FWZTL55Y005M015	15
	FWZTL55Y005M020	20
	FWZTL55Y005M025	25
	FWZTL55Y005M030	30
	FWZTL55Y005M035	35
	FWZTL55Y005M040	40
	FWZTL55Y005M045	45
	FWZTL55Y005M050	50
	FWZTL55Y005M055	55
	FWZTL55Y005M060	60
	FWZTL55Y005M065	65
	FWZTL55Y005M070	70
	FWZTL55Y005M075	75
	FWZTL55Y005M080	80

\* is Fiber type, ^^ is length of cable

## MPO Accessories

### Fiber Optic Cassettes

#### The QuickNet™ MPO Fiber Optic Cassettes

QuickNet™ MPO Fiber Optic Cassettes consist of pre-terminated LC adapters for quick and easy deployment in high density applications and provide efficient utilization of rack space and design flexibility. QuickNet™ MPO Fiber Optic Cassettes are available with a singlemode insertion loss of 0.75dB max and multimode insertion loss of 0.5dB max. The cassettes offer 12-fiber MPO adapter(s) on the rear of the units routed to duplex LC adapters on the front patch field. The cassette houses a maximum of 24-fibers, which equals 96-fibers per RU in a 1RU patch panel. Adapter housing colors follow TIA/EIA-568-C.3 suggested color identification scheme. QuickNet™ MPO Fiber Optic Cassettes interconnect with high-density fiber cable assemblies for quick connection of remote or data center applications.



#### FCW\*N-\*\*-10U

QuickNet™ SFQ MPO-LC Fiber Cassette , Universal

#### Standard

- TIA/EIA-568-C.3
- ANSI T11.2 (Fibre Channel)
- Compliant with ROHS 2002/95/EC.

#### Descriptions

<b>Product Type</b>	: MPO Fiber Optic Cassettes
<b>Front connectivity</b>	: LC
<b>Fiber Type</b>	: Singlemode , Multimode
<b>Split sleeve material</b>	: Zirconia ceramic
<b>Fiber Count</b>	: 12 , 24
<b>Adapter Color</b>	: Blue , Aqua
<b>Polarity</b>	: Universal

Fiber Type	Part No.	Core
OS2	FCW9N-12-10U	12
	FCW9N-24-10U	24
OM3 / OM4	FCWZO-12-10U	12
	FCWZO-24-10U	24

\* is Fiber type, \*\* is number of Core

## MPO Accessories

### Fiber Panel

#### The HD Flex™ Fiber Panel

The HD Flex Fiber Panel shall house, organize, manage and protect fiber optic trunk cables, terminations, splices, connectors and patch cords as well as accommodate all HD Flex cassettes and fiber adapter panels (FAP). The Panels allow cassettes and FAPs to be installed by sliding them into the front or the rear of the patch panel which allows each individual cassette or FAP to be removed with minimal disruption to other cassettes or FAPs. Panels are constructed of steel material and can be ordered in either 4-port, 6-port or 12-port configurations that accept either 4-port, 6-port and 12-port cassettes or FAPs.



#### FLEX\*UPN\*\*

HD Flex™ Fiber Panel

#### Standard

- EIA-310
- RoHS compliant

#### Descriptions

<b>Product Type</b>	: Fiber Panel
<b>Mounting</b>	: Mounts to standard EIA 19" racks
<b>Material</b>	: Metal
<b>Adapter Color</b>	: Black
<b>Resistance Properties</b>	: Flame-Resistant

RU	Part No.	Port
1 RU	FLEX1UPN04	4
	FLEX1UPN06	6
	FLEX1UPN12	12
2 RU	FLEX2UPN04	4
	FLEX2UPN06	6
	FLEX2UPN12	12
4 RU	FLEX4UPN04	4
	FLEX4UPN06	6
	FLEX4UPN12	12

\* is Number of Rack Unit, \*\* is Number of Ports



## MPO Accessories

### Fiber Enclosures

#### The HD Flex™ Fiber Enclosures

The HD Flex enclosure shall house, organize, manage and protect fiber optic trunk cables, terminations, splices, connectors and patch cords as well as accommodate all HD Flex cassettes and fiber adapter panels (FAP). The HD Flex Enclosures provide front access with drawers that slide out into two locked positions.

The Enclosures allow cassettes and FAPs to be installed by dropping them into the front of the enclosure tray or sliding them into the rear of the enclosure tray. This allows each individual cassette or FAP to be removed with minimal disruption to other cassettes or FAPs.

The Enclosures are constructed of steel material and can be ordered in either 4-port, 6-port or 12-port configurations that accept combinations of either 4-port, 6-port cassettes and 12-port cassettes respectively.



#### FLEX\*U\*\*

HD Flex™ Fiber Enclosure

#### Standard

- EIA-310
- RoHS compliant

#### Descriptions

<b>Product Type</b>	: Fiber Enclosure
<b>Mounting</b>	: Mounts to standard EIA 19" racks
<b>Material</b>	: Metal
<b>Adapter Color</b>	: Black

RU	Part No.	Port
1 RU	FLEX1U04	4
	FLEX1U06	6
	FLEX1U12	12
2 RU	FLEX2U04	4
	FLEX2U06	6
	FLEX2U12	12
4 RU	FLEX4U04	4
	FLEX4U06	6
	FLEX4U12	12

\* is Number of Rack Unit, \*\* is Number of Ports

## MPO Accessories

### Enclosure Trunk Slack Plate



#### FLEX-PLATE\*U

HD Flex™ Enclosure Trunk Slack Plate

#### The HD Flex™ Enclosure Trunk Slack Plate

The HD Flex™ Enclosure Trunk Slack Plate is design for excess to hold trunk slack

#### Descriptions

<b>Product Type</b>	: Trunk Slack Plate
<b>Material</b>	: Steel
<b>Color</b>	: Black
<b>Application</b>	: Cable Management

Part No.	RU
FLEX-PLATE1U	1
FLEX-PLATE2U	2
FLEX-PLATE4U	4

\* is Number of Rack Unit

### Cassette Rear Cable Manager



#### FQRCM

QuickNet™ Cassette Rear Cable Manager

#### The QuickNet™ Cassette Rear Cable Manager

The QuickNet™ Cassette Rear Cable Manager mounts to the rear of a standard EIA 19 — wide telecommunications rack, saving floor space by eliminating the need for horizontal cable managers. The cable manager not only organizes and routes cables, but also holds up to one meter of slack, providing necessary strain relief and bend radius control to protect cables from damage.

#### Descriptions

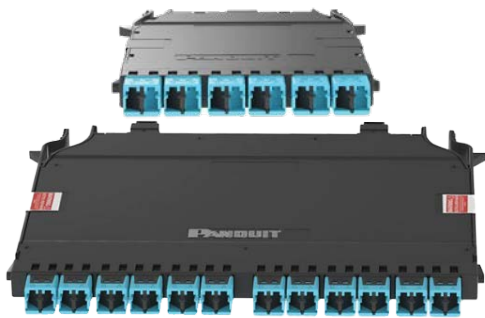
<b>Product Type</b>	: Rear Cable Manager
<b>Mounting options</b>	: Mounts to standard EIA 19" racks
<b>Resistance Properties</b>	: Flame-Resistant
<b>Color</b>	: Black
<b>Application</b>	: Cable Management

## MPO Accessories

### Fiber Optic Cassettes

#### The HD Flex™ Fiber Optic Cassettes

HD Flex™ Fiber Optic Cassettes offer a wide array of deployment options to support both Ethernet and Fibre Channel networks. Cassettes are available in 4-port, 6-port, and 12-port configurations with several connector options on the front and back of the cassettes. Splice cassettes and adapter/coupler modules are also available.



**FHC\*-\*\*-^U**

HD Flex™ MPO-LC Cassette, Universal

#### Standard

- ISO/IEC 11801
- ANSI/TIA-568-C.3, TIA-604-5 (FOCIS-5), TIA-604-10 (FOCIS-10)
- RoHS Compliant

#### Descriptions

<b>Product Type</b>	: HD Flex Fiber Optic Cassettes
<b>Front connectivity</b>	: LC
<b>Fiber Type</b>	: Singlemode , Multimode
<b>Split sleeve materia</b>	: Zirconia ceramic
<b>Fiber Count</b>	: 12 , 24
<b>Adapter Color</b>	: Blue , Aqua
<b>Polarity</b>	: Universal

Fiber Type	Part No.	Core	Adapter Type
OS2	FHC9N-12-10U	12	LC
	FHC9N-24-10U	24	LC
	FHC9N-12-03U	12	SC
OM3	FHCXO-12-10U	12	LC
	FHCXO-24-10U	24	LC
	FHCXN-12-03U	12	SC
OM4	FHCZO-12-10U	12	LC
	FHCZO-24-10U	24	LC

\* is Fiber type, \*\* is number of Cores, ^ is Adapter type



# RACK & CABINET SYSTEM

# Rack & Cabinet Solutions



## Cabinet

### Net-Verse™ D-Type Cabinets

Net-Verse™ D-Type Cabinets are the preferred choice for applications that require maximum flexibility and the capacity to manage high cable density in data center, enterprise or co-location deployment. The Net-Verse™ D-Type Cabinets are also compatible with Panduit cable management accessories and the Net-Contain™ Universal Aisle Containment System.



#### DAE\*\*\*\*

COLOR ● ○

#### Standard

- EIA-310-E
- TIA/EIA-942,
- RoHS Compliant
- UL 2416

#### Descriptions

<b>Product Type</b>	: D-Type Cabinet
<b>Rear Door Type</b>	: Door Split Hinged
<b>Front Door Type</b>	: Door Single Hinged
<b>Material</b>	: Steel
<b>Number of Rack Units</b>	: 42 , 45
<b>Color</b>	: Black , White
<b>Static Load Capacity</b>	: 1500 kg
<b>Rolling Load Capacity</b>	: 500 kg
<b>Finish/Coating</b>	: Powder-Coated

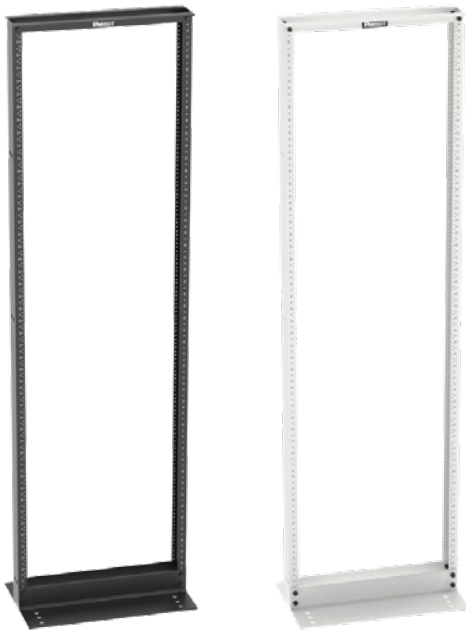
Part No.	RU	Size	Color
DAE6212B	42	600 x 1000	Black
DAE6212W			White
DAE6512B	45		Black
DAE6512W			White
DAE6222B	42	600 x 1200	Black
DAE6222W			White
DAE6522B	45		Black
DAE6522W			White

Part No.	RU	Size	Color
DAE8212BF	42	800 x 1000	Black
DAE8212WF			White
DAE8512BF	45		Black
DAE8512WF			White
DAE8222BF	42	800 x 1200	Black
DAE8222WF			White
DAE8522BF	45		Black
DAE8522WF			White

## Rack

### 2-Post Standard Equipment Rack

The data equipment rack shall meet EIA-310E standards and be constructed of extruded aluminum or steel capable of accepting 19" wide EIA equipment. The telecommunications rack shall be constructed of extruded aluminum and capable of accepting 23" wide telecommunications equipment. Rack construction method shall ensure an electrically-bonded structure for ease of grounding. The 3" channel rack shall be UL listed for 1000 lbs. load rating and the 6" channel rack shall be UL listed for 1500 lbs. load rating. The equipment mounting rails shall be double-sided #12-24 EIA universal mounting hole spacing. The equipment mounting rails shall include printed rack space identification on the front and back and be numbered up. The channel of the rack shall be capable of mounting NetRunner™ or PatchRunner™ 2 Vertical Cable Managers. 24 #12-24 mounting screws shall be included with the rack.



**R2P\*\*\*\***

COLOR ● ○

#### Standard

- UL 2416
- EIA/ECA-310-E
- RoHS Compliant

#### Descriptions

<b>Product Type</b>	: 2-Post Rack
<b>Mounting Bolt Method</b>	: Threaded
<b>Material</b>	: Aluminum
<b>Number of Rack Units</b>	: 24 , 42 , 45 , 52
<b>Static Load Capacity</b>	: 454 kg
<b>Color</b>	: Black , White
<b>Rail Number Direction</b>	: Bottom Up
<b>Finish/Coating</b>	: Powder-Coated

Part No.	RU	DIMENSION ( HxWxD In.)	Color
R2P48	24	48.0 x 20.3 x 3.0	
R2P79	42	79.0 x 20.3 x 3.0	Black
R2P		84.0 x 20.3 x 3.0	
R2PWH		96.1 x 20.3 x 3.0	White
R2PW	45	84.0 x 24.5 x 3.0	
R2PS		84.0 x 20.3 x 3.0	
R2P6S		84.0 x 20.3 x 6.0	Black
R2P96	52	96.1 x 20.3 x 3.0	
R2P6S96		96.1 x 20.3 x 6.0	

### Rack

#### Adjustable Rail 4-Post Rack System

The telecommunications rack shall meet EIA/ECA-310-E standards, be 42, 45, or 52 RU, constructed of steel and capable of accepting 19" wide EIA equipment. The rack shall include adjustable front and rear equipment mounting rails. The equipment mounting rails shall be #12-24 or cage nut square opening style mounting. The adjustable equipment mounting rails shall include printed rack unit numbering and can be flipped by the user for either numbers up or numbers down. The front and rear structural posts of the rack shall be capable of mounting NetRunner™ or PatchRunner™ 2 Vertical Cable Managers and accessories. The rack shall also accept optional casters mounted to the bottom of the rack. The construction method shall ensure an electrically-bonded structure for ease of grounding.



#### R4P\*\*\*\*

COLOR ● ○

#### Standard

- UL 2416
- EIA/ECA-310-E
- RoHS Compliant

#### Descriptions

<b>Product Type</b>	:	4-Post Rack
<b>Mounting Bolt Method</b>	:	Threaded
<b>Material</b>	:	Steel
<b>Number of Rack Units</b>	:	42 , 45 , 52
<b>Static Load Capacity</b>	:	1134 kg
<b>Color</b>	:	Black , White
<b>Rail Number Direction</b>	:	Reversible
<b>Finish/Coating</b>	:	Powder-Coated

Part No.	RU	DIMENSION ( HxWxD In.)	Color
R4P	45	84.0 x 23.3 x 30.0	Black
R4PWH	45	84.0 x 23.3 x 30.0	White



## Rack Accessories

### NetRunner™ Vertical Cable Managers

The vertical cable manager shall be capable of mounting to EIA racks to manage cables on the front and rear of the rack. The manager shall be molded out of plastic and possess cable management fingers and pass-through holes. The fingers shall provide integral bend radius control and be spaced so that the gaps between the fingers align with EIA rack spaces. The vertical manager shall have a cover that can be opened to the left or right 110 degrees. The manager shall be able to accept wire retainers that can be snapped on to the cable management fingers.



**WMPV\*\*\*\***

COLOR ●

**Standard**

- RoHS Compliant

### Descriptions

<b>Product Type</b>	: Dual-Sided Manager
<b>Body Material</b>	: ABS
<b>Orientation</b>	: Vertical
<b>Cover Material</b>	: PVC
<b>Finger Material</b>	: ABS
<b>Number of Rack Units</b>	: 22 , 45
<b>Environment</b>	: Indoor
<b>Color</b>	: Black
<b>Includes</b>	: Manager, covers, hardware kit

Part No.	RU	DIMENSION ( HxWxD In.)	Color
WMPV22E	22	41.5 x 4.9 x 12.0	Black
WMPVF22E	22	41.5 x 4.9 x 6.5	
WMPV45E	45	83.0 x 4.9 x 12.0	
WMPVF45E	45	83.0 x 4.9 x 6.5	
WMPVHC45E	45	83.0 x 6.7 x 14.1	
WMPVHCF45E	45	83.0 x 6.7 x 7.6	

## Rack Accessories

### PatchRunner™ 2 Vertical Cable Managers

The vertical cable manager shall consist of a metal backbone with cable management fingers that align with EIA rack spacing. The fingers shall be molded out of plastic and provide integral bend radius control throughout the entire length. The backbone shall have pass-through holes for front to back cabling. The manager shall accept a metal, hinged, push-to-close door that can open to the right or left. The door support brackets shall be integrated into the manager with no assembly required. The vertical panel shall be able to manage all the cable on the rack without the aid of horizontal cable managers.



### PR2V\*\*\*\*

COLOR ● ○

### Standard

- RoHS Compliant

### Descriptions

<b>Product Type</b>	: Single Sided Manager, Dual-Sided Manager
<b>Body Material</b>	: Steel
<b>Orientation</b>	: Vertical
<b>Cover Material</b>	: Steel
<b>Finger Material</b>	: ABS
<b>Number of Rack Units</b>	: 42, 45, 52
<b>Environment</b>	: Indoor
<b>Color</b>	: Black, White
<b>Includes</b>	: Manager, one door, two doors, hardware kit

Part No.	RU	DIMENSION ( HxWxD In.)	TYPE	Color
PR2VD0679(WH)	42	78.9 x 6.0 x 20.7	Dual-Sided	Black (White)
PR2VD1279(WH)		78.9 x 12.0 x 20.7		
PR2VFD0679(WH)		78.9 x 6.0 x 12.0	Single-Sided	
PR2VFD1279(WH)		78.9 x 12.0 x 12.0		
PR2VD06(WH)	45	83.9 x 6.0 x 20.7	Dual-Sided	
PR2VD08(WH)		83.9 x 8.0 x 20.7		
PR2VD10(WH)		83.9 x 10.0 x 20.7		
PR2VD12(WH)		83.9 x 12.0 x 20.7		
PR2VFD06(WH)		83.9 x 6.0 x 12.0	Single-Sided	
PR2VFD08(WH)		83.9 x 8.0 x 12.0		
PR2VFD10(WH)	83.9 x 10.0 x 12.0			
PR2VFD12(WH)	83.9 x 12.0 x 12.0			
PR2VD0696(WH)	52	95.9 x 6.0 x 20.7	Dual-Sided	
PR2VD0896(WH)		95.9 x 8.0 x 20.7		
PR2VD1096(WH)		95.9 x 10.0 x 20.7		
PR2VD1296(WH)		95.9 x 12.0 x 20.7		
PR2VFD0696(WH)		95.9 x 6.0 x 12.0	Single-Sided	
PR2VFD0896(WH)		95.9 x 8.0 x 12.0		
PR2VFD1096(WH)		95.9 x 10.0 x 12.0		
PR2VFD1296(WH)		95.9 x 12.0 x 12.0		

## Rack Accessories

### PatchRunner™ 2 Enhanced Vertical Cable Manager with Vertical Patching

The Patchrunner™ 2 Enhanced Vertical Cable Manager with Vertical Patching shall consist of a metal backbone with cable management fingers that align with EIA rack spacing. The backbone shall be an open design that will accept 19" EIA accessories. The fingers shall be molded out of plastic and provide integral bend radius control throughout the entire length. The manager shall accept a metal, hinged, push-to-close door that can open to the right or left.

#### PE2V\*\*\*\*

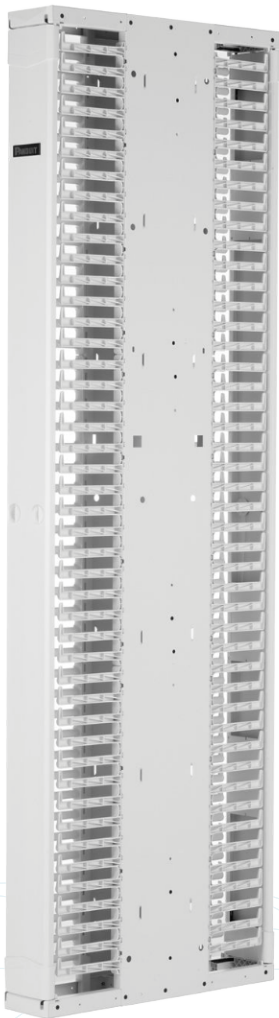
COLOR  

#### Standard

- RoHS Compliant

#### Descriptions

**Product Type** : Dual-Sided Manager, Dual-Sided Manage  
**Body Material** : Steel  
**Orientation** : Vertical  
**Cover Material** : Steel  
**Finger Material** : ABS  
**Number of Rack Units** : 45 , 52  
**Environment** : Indoor  
**Color** : Black , White  
**Includes** : Manager, one door, two doors, hardware kit



Part No.	RU	DIMENSION (HxWxD In.)	TYPE	DOOR	VERTICAL RU	Color
PE2VD06(WH)	45	84.0 x 6.0 x 26.8	Dual-Sided	2	6	Black (White)
PE2VD08(WH)		84.0 x 8.0 x 26.8			9	
PE2VD10(WH)		84.0 x 10.0 x 26.8			12	
PE2VD12(WH)		84.0 x 12.0 x 26.8	Single-Sided	1	15	
PE2VFD06(WH)		84.0 x 6.0 x 16.3			6	
PE2VFD08(WH)		84.0 x 8.0 x 16.3			9	
PE2VFD10(WH)		84.0 x 10.0 x 16.3	12			
PE2VFD12(WH)		84.0 x 12.0 x 16.3	15			
PE2VSD06(WH)		84.0 x 6.0 x 26.8	Dual-Sided	1	6	
PE2VSD08(WH)		84.0 x 8.0 x 26.8			9	
PE2VSD10(WH)		84.0 x 10.0 x 26.8			12	
PE2VSD12(WH)		84.0 x 12.0 x 26.8	15			
PE2VD0696(WH)	52	96.0 x 6.0 x 26.8	Dual-Sided	2	6	
PE2VD0896(WH)		96.0 x 8.0 x 26.8			9	
PE2VD1096(WH)		96.0 x 10.0 x 26.8			12	
PE2VD1296(WH)		96.0 x 12.0 x 26.8	Single-Sided	1	15	
PE2VFD0696(WH)		96.0 x 6.0 x 16.3			6	
PE2VFD0896(WH)		96.0 x 8.0 x 16.3			9	
PE2VFD1096(WH)		96.0 x 10.0 x 16.3	12			
PE2VFD1296(WH)		96.0 x 12.0 x 16.3	15			
PE2VSD0696(WH)		96.0 x 6.0 x 26.8	Dual-Sided	1	6	
PE2VSD0896(WH)		96.0 x 8.0 x 26.8			9	
PE2VSD1096(WH)		96.0 x 10.0 x 26.8			12	
PE2VSD1296(WH)		96.0 x 12.0 x 26.8	15			

## Rack Accessories

### Waterfall Trough



#### PR2VWF\*\*\*\*

PatchRunner™ 2 Waterfall Trough

#### Waterfall Trough for PR2V Managers

The PatchRunner™ 2 Waterfall Trough creates an over-rack pathway to effectively route cables into the vertical manager channel with proper bend radius. It is compatible with Panduit 2-post and 4-post racks. The waterfall trough depth is sized specific to the PatchRunner™ 2 (PR2V) vertical managers for maximum capacity and seamless transition.

#### Descriptions

**Product Type** : Trough  
**Body Material** : Steel  
**For Use With** : PR2V Vertical Managers and 2-Post or 4-Post Racks  
**Color** : Black , White

Part No.	COLOR
PR2VWF	Black
PR2VFWH	White

### End Panel



#### WMPV45EPB1

The NetRunner™ End Panel

#### End Panel for WMPV45E Managers

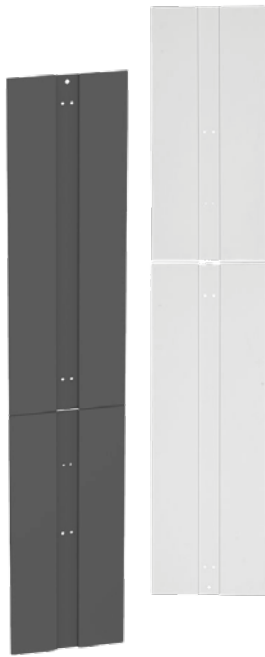
The NetRunner™ End Panel closes off the end of row to protect cabling, and it provides a clean aesthetic to the solution. The two part design reduces the size of the carton for easier transport throughout the site and less risk of transit damage.

#### Descriptions

**Product Type** : End Panel  
**Body Material** : Aluminum  
**For Use With** : WMPV Vertical Managers  
**Sub Brand** : NetRunner™  
**Color** : Black  
**Number of Rack Units** : 45

## Rack Accessories

### End Panel



#### PR2VWF\*\*\*\*

The PatchRunner™ End Panel

#### End Panel for PR2V Managers

The PatchRunner™ 2 End Panel closes off the end of row to protect cabling, and it provides a clean aesthetic to the solution. The end panel is metal with hanging features to speed up installation and reduce safety risks. The two part design reduces the size of the carton for easier transport throughout the site and less risk of transit damage.

#### Descriptions

<b>Product Type</b>	: End Panel
<b>Body Material</b>	: Steel
<b>For Use With</b>	: 45 RU , 52 RU PR2V Vertical Cable Managers
<b>Color</b>	: Black , White
<b>Sub Brand</b>	: PatchRunner™ 2
<b>Number of Rack Units</b>	: 45 , 52

Part No.	RU	COLOR
PR2VEP	45	Black
PR2VEPWH	45	White
PR2VEP96	52	Black
PR2VEP96WH	52	White

## Rack Accessories

### Rack Mount Shelves



#### SRM19FM\*

The 2-Post Rack mount shelf

#### The 2-Post Rack mount shelf

The 2-Post Rack mount shelf mounts test gear, computer equipment, and small networking devices.

#### Descriptions

**Product Type** : Rack Shelf  
**Material** : Steel  
**Compatible Rack System** : 19  
**Color** : Black

Part No.	RU
SRM19FM1	1
SRM19FM2	2



#### SRM19CM\*\*

Rack Mount Cantilevered Shelf

#### Rack Mount (Vented) Cantilevered Shelf

The Rack Mount Cantilevered Shelf mounts test gear, computer equipment and small networking devices on any EIA 19in (483mm) 2-Post Rack. The two-piece shelf mounts to the front and back rails of 2-Post EIA Racks.

#### Descriptions

**Product Type** : Rack Shelf  
**Material** : Aluminum  
**Compatible Rack System** : 19  
**Color** : Black

Part No.	RU	Option
SRM19CMV3	3	Vented
SRM19CM3		Flat

## Rack Accessories

### Rack Mount Shelves



#### SRM19X\*\*

The Rack Mount Adjustable Shelf

#### The Rack Mount Adjustable Shelf

The Rack Mount Adjustable Shelf mounts test gear, computer equipment and small networking devices on 3 inch or 6 inch channel racks. The one-piece shelf mounts to the front and back of 2-Post EIA Racks. The shelf is 18 inches deep and has a load capacity of 250 lbs.

#### Descriptions

**Product Type** : Rack Shelf  
**Material** : Steel  
**Compatible Rack System** : 19  
**Color** : Black

Part No.	RU	Depth (In.)
SRM19X18A1	1	18
SRM19X25A1		25



#### RSHLF\*\*

4-Post Rack Shelf

#### 4-Post Rack Shelf

The Rack Shelf is an accessory that is designed to support large networking equipment. It complements the 4-Post Rack System in Data Center and Enterprise Applications. The Adjustable Support Bracket allows for the Shelf to Mount to the Equipment Rails at Various Depths. The shelf is made of steel.

#### Descriptions

**Product Type** : Rack Shelf  
**Body Material** : Steel  
**For Use With** : 4 Post-Rack  
**Color** : Black , White

Part No.	RU	Size (In.)	Color
RSHLF	1	19 X 30	Black
RSHLFWH			White
RSHLF23		19 X 23	Black
RSHLF36		19 X 36	Black
RSHLF36WH			White

### Wall Mount Enclosures

#### Wall Mount Enclosures



#### FWME\*

Opticom® Wall Mount Fiber Enclosure

#### The Opticom® Wall Mount Fiber Enclosure

The Panduit® Opticom® Wall Mount Fiber Enclosure is designed to manage and organize fiber distribution when space is limited. Wall Mount Fiber Enclosure can be used as an interconnect or cross-connect in any telecommunications room and can use any standard FAP or FMP series adapter panel. It's compatible with most Panduit® Mini-Com®, ST and SC.

#### Standard

- RoHS Compliant

#### Descriptions

**Product Type** : Fiber Enclosure  
**Application** : Wall Mount Fiber Optic Cable Management  
**Material** : Steel  
**Color** : Black  
**Optional keyed lock** : Provides added security

Part No.	Slot
FWME2	2
FWME4	4
FWME8	8



### Wall Mount Enclosures

#### Wall Mount Enclosures



#### WME\*BL

TrueEdge™ Vertical Wall Mount Enclosure

#### TrueEdge™ Vertical Wall Mount Enclosure

The TrueEdge™ Vertical Wall Mount Enclosure provides a comprehensive architecture that allows up to 36" of active equipment depth to be mounted in a low-profile application. The TrueEdge™ has adjustable rails to allow for optimal configuration

#### Standard

- UL 2416
- IP20

#### Descriptions

<b>Product Type</b>	: Wall Mount Enclosure
<b>Mount Method</b>	: Wall Mount
<b>Material</b>	: Steel
<b>Color</b>	: Black
<b>Number of Rack Units</b>	: 3 , 6 , 9

Part No.	RU
WME3BL	3
WME6BL	6
WME9BL	9

# **CABLE MANAGEMENT SYSTEM**

# Cable Management Solutions



### Fiber Runner

#### Chanel & Cover



#### FR\*X4YL\*\*

The FiberRunner® Channel

#### FiberRunner® Channel

The FiberRunner® Channel can be used with fittings and brackets to design a routing system to separate, route, and protect fiber optic and high-performance copper cables. The cable routing channel accepts cable retainers or a hinged cover.

#### Standard

- UL Listed to 2024A
- GR-63-CORE
- RoHS Compliant

#### Descriptions

**Product Type** : Fiber Routing Channel  
**Material** : Rigid PVC  
**Color** : Yellow/ Black  
**Length** : 2000 mm

Part No.	SIZE (In.)	SIZE (mm.)
FR4X4YL2	4 x 4	100 x 100
FR6X4YL2	6 x 4	150 x 100
FR12X4YL2	12 x 4	300 x 100
FR24X4YL10^	24 x 4	600 x 100



#### FRHC\*YL\*

The FiberRunner® Snap-On Hinged Cover

#### FiberRunner® Snap-On Hinged Cover

Optional snap-on hinged cover for The FiberRunner® Channel. Hinge feature enables positioning of cover at angles between 30° to 90°.

#### Standard

- UL Listed to 2024A
- GR-63-CORE
- RoHS Compliant

#### Descriptions

**Product Type** : Fiber Routing Cover  
**Material** : Rigid PVC  
**Color** : Yellow/ Black

Part No.	SIZE (In.)	SIZE (mm.)
FRHC4YL2	4 x 4	100 x 100
FRHC6YL2	6 x 4	150 x 100
FRHC12YL2	12 x 4	300 x 100
FRCV24YL10^	24 x 4	600 x 100

\* Part No. FR24X4YL10 , FRCV24YL10 Length is 3000 mm.

## Fiber Runner

### Chanel & Cover



#### FRSHC\*YL6

The FiberRunner® Split Hinged Snap-On Channel Cover

#### FiberRunner® Split Hinged Snap-On Channel Cover

The FiberRunner® Split Hinged Snap-On Channel Cover is used for the FiberRunner® Channel. The snap-on channel cover enables the positioning of the cover at angles between 30° and 90°. It creates a radiused 0.750 inch (19mm) opening for easy access to add or remove cables.

#### Standard

- UL Listed to 2024A
- GR-63-CORE
- RoHS Compliant

#### Descriptions

**Product Type** : Fiber Routing Cover  
**Material** : Rigid PVC  
**Color** : Yellow/ Black

Part No.	SIZE (In.)	SIZE (mm.)
FRSHC4YL2	4 x 4	100 x 100
FRSHC6YL2	6 x 4	150 x 100

### Fittings, Split Covers & Spillouts



#### FRBC\*X4LYL

The FiberRunner® Coupler

#### FiberRunner® Coupler

The FiberRunner® QuikLock™ Coupler quickly joins two sections of the FiberRunner® Channel and/or fittings. The coupler delivers fast installations due to toolless installation.

#### Standard

- UL Listed to 2024A
- GR-63-CORE
- RoHS Compliant

#### Descriptions

**Product Type** : Fiber Routing Coupler  
**Material** : Polycarbonate / ABS  
**Color** : Yellow / Black

Part No.	SIZE (In.)
FRBC4X4LYL	4 x 4
FRBC6X4LYL	6 x 4
FRBC12X4LYL	12 x 4
FRBC24X4LYL	24 x 4

### Fiber Runner

#### Fittings, Split Covers & Spillouts



#### FRRAX4LYL

The FiberRunner® Horizontal Angle

#### FiberRunner® Horizontal Angle

The FiberRunner® Horizontal Angle creates a 90° horizontal turn from a straight horizontal run.

#### Standard

- UL Listed to 2024A
- GR-63-CORE
- RoHS Compliant

#### Descriptions

**Product Type** : Angled Fitting  
**Material** : Polycarbonate / ABS  
**Color** : Yellow/ Black

Part No.	SIZE (In.)
FRRAX4LYL	4 x 4
FRRAX6LYL	6 x 4
FRRAX12LYL	12 x 4



#### FRRASC\*LYL

The FiberRunner® Horizontal Angle Cover

#### Standard

- UL Listed to 2024A
- GR-63-CORE
- RoHS Compliant

#### Descriptions

**Product Type** : Angled Fitting Cover  
**Material** : Polycarbonate / ABS  
**Color** : Yellow/ Black

Part No.	SIZE (In.)
FRRASC4LYL	4 x 4
FRRASC6LYL	6 x 4
FRRASC12LYL	12 x 4

### Fiber Runner

#### Fittings, Split Covers & Spillouts



#### FRT\*X4LYL

The FiberRunner® Horizontal Tee

#### FiberRunner® Horizontal Tee

The FiberRunner® Horizontal Tee creates a 90° horizontal branch from straight horizontal runs.

#### Standard

- UL Listed to 2024A
- GR-63-CORE
- RoHS Compliant

#### Descriptions

- Product Type** : Tee Fitting
- Material** : Polycarbonate / ABS
- Color** : Yellow/ Black

Part No.	SIZE (In.)
FRT4X4LYL	4 x 4
FRT6X4LYL	6 x 4
FRT12X4LYL	12 x 4



#### FRTSC\*LYL

The FiberRunner® Horizontal Tee Split Cover

#### The FiberRunner® Horizontal Tee Split Cover

The FiberRunner® Horizontal Tee Split Cover is optional for the horizontal tee fitting. The snap-on feature allows the cover to be installed and removed with no tools. creates a radiused 0.75 inch opening for easy access to add or remove cables.

#### Standard

- UL Listed to 2024A
- GR-63-CORE
- RoHS Compliant

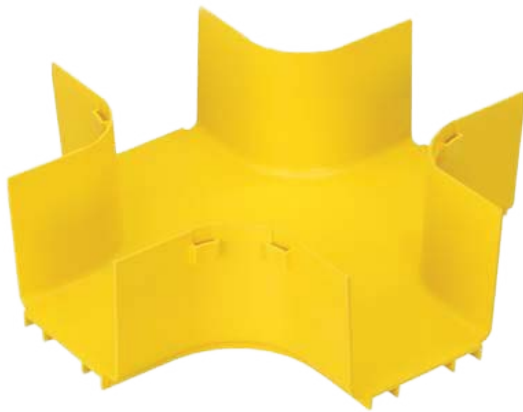
#### Descriptions

- Product Type** : Tee Fitting Cover
- Material** : Polycarbonate / ABS
- Color** : Yellow/ Black

Part No.	SIZE (In.)
FRTSC4LYL	4 x 4
FRTSC6LYL	6 x 4
FRTSC12LYL	12 x 4

## Fiber Runner

### Fittings, Split Covers & Spillouts



#### FRFWC\*X4LYL

The FiberRunner® 4-Way Cross Fitting

#### FiberRunner® 4-Way Cross

The FiberRunner® 4-Way Cross Fitting attaches to the FiberRunner® Channel and/or fittings to create a horizontal 4-way cross intersection with two exits.

#### Standard

- UL Listed to 2024A
- GR-63-CORE
- RoHS Compliant

#### Descriptions

**Product Type** : Four Way Cross  
**Material** : Polycarbonate / ABS  
**Color** : Yellow/ Black

Part No.	SIZE (In.)
FRFWC4X4LYL	4 x 4
FRFWC6X4LYL	6 x 4
FRFWC12X4LYL	12 x 4
FRFWC24X4LYL	24 x 4



#### FRFWCSC\*LYL

The FiberRunner® 4-Way Cross Cover

#### FiberRunner® 4-Way Cross Cover

The FiberRunner® 4-Way Cross Cover is for the 4-way cross fitting. The cover creates openings for easy access to add or remove cables.

#### Standard

- UL Listed to 2024A
- GR-63-CORE
- RoHS Compliant

#### Descriptions

**Product Type** : Four Way Cross Cover  
**Material** : Polycarbonate / ABS  
**Color** : Yellow/ Black

Part No.	SIZE (In.)
FRFWCSC4LYL	4 x 4
FRFWCSC6LYL	6 x 4
FRFWCSC12LYL	12 x 4
FRFWCCV24L	24 x 4



## Fiber Runner

### Fittings, Split Covers & Spillouts



#### FRIV45\*X4LYL

FiberRunner® Inside Vertical angle fitting 45 degree

#### FiberRunner® Inside Vertical Angle Fitting 45 degree

The FiberRunner® Inside Vertical creates a 45° upward angle from a straight horizontal run. It is used with outside vertical 45° angle fitting to change the level of a straight horizontal run.

#### Standard

- UL Listed to 2024A
- GR-63-CORE
- RoHS Compliant

#### Descriptions

**Product Type** : Angled Fitting  
**Material** : Polycarbonate / ABS  
**Color** : Yellow/ Black

Part No.	SIZE (In.)
FRIV454X4LYL	4 x 4
FRIV456X4LYL	6 x 4
FRIV4512X4LYL	12 x 4
FRIV4524X4LYL	24 x 4



#### FRIVRA\*X4LYL

FiberRunner® Inside Vertical Angle Fitting 90 degree

#### FiberRunner® Inside Vertical Angle Fitting 90 degree

The FiberRunner® Inside Vertical creates a 90° upward angle from a straight horizontal run. It is used with outside vertical 90° angle fitting to change the level of a straight horizontal run.

#### Standard

- UL Listed to 2024A
- GR-63-CORE
- RoHS Compliant

#### Descriptions

**Product Type** : Angled Fitting  
**Material** : Polycarbonate / ABS  
**Color** : Yellow/ Black

Part No.	SIZE (In.)
FRIVRA4X4LYL	4 x 4
FRIVRA6X4LYL	6 x 4

## Fiber Runner

### Fittings, Split Covers & Spillouts



#### FROV45\*X4LYL

The FiberRunner® Outside Vertical angle fitting 45 degree

#### FiberRunner® Outside Vertical Angle Fitting 45 degree

The FiberRunner® Outside Vertical attaches to the FiberRunner® Channel and/or fitting to create a 45° downward angle from a horizontal run. It is used with inside vertical 45° angle fitting to change the level of a straight horizontal run.

#### Standard

- UL Listed to 2024A
- GR-63-CORE
- RoHS Compliant

#### Descriptions

- Product Type** : Angled Fitting
- Material** : Polycarbonate / ABS
- Color** : Yellow/ Black

Part No.	SIZE (In.)
FROV454X4LYL	4 x 4
FROV456X4LYL	6 x 4
FROV4512X4LYL	12 x 4
FROV4524X4LYL	24 x 4



#### FROV45SC\*LYL

The FiberRunner® Outside Vertical angle cover 45 degree

#### FiberRunner® Outside Vertical angle cover 45 degree

The FiberRunner® Outside Vertical Cover creates openings for easy access to add or remove cables damage.

#### Standard

- UL Listed to 2024A
- GR-63-CORE
- RoHS Compliant

#### Descriptions

- Product Type** : Angled Fitting Cover
- Material** : Polycarbonate / ABS
- Color** : Yellow/ Black

Part No.	SIZE (In.)
FROV45SC4LYL	4 x 4
FROV45SC6LYL	6 x 4
FROV45SC12LYL	12 x 4
FROV45CV24LYL	24 x 4

## Fiber Runner

### Fittings, Split Covers & Spillouts



**FROVRA\*X4LYL**

The FiberRunner® Outside Vertical right angle 90 degree

### FiberRunner® Outside Vertical Right Angle 90 degree

The FiberRunner® Outside Vertical creates a 90° vertical turn down from a straight horizontal run. It is used with inside vertical 90° angle fitting to change the level of a straight horizontal run.

#### Standard

- UL Listed to 2024A
- GR-63-CORE
- RoHS Compliant

#### Descriptions

**Product Type** : Angled Fitting  
**Material** : Polycarbonate / ABS  
**Color** : Yellow/ Black

Part No.	SIZE (In.)
FROVRA4X4LYL	4 x 4
FROVRA6X4LYL	6 x 4
FROVRA12X4LYL	12 x 4



**FROVRASC\*LYL**

FiberRunner® Cover Outside Vertical Right-Angle

### FiberRunner® cover Outside Vertical right- angle

The FiberRunner® Outside Vertical Right-Angle Cover creates openings for easy access to add or remove cables.

#### Standard

- UL Listed to 2024A
- GR-63-CORE
- RoHS Compliant

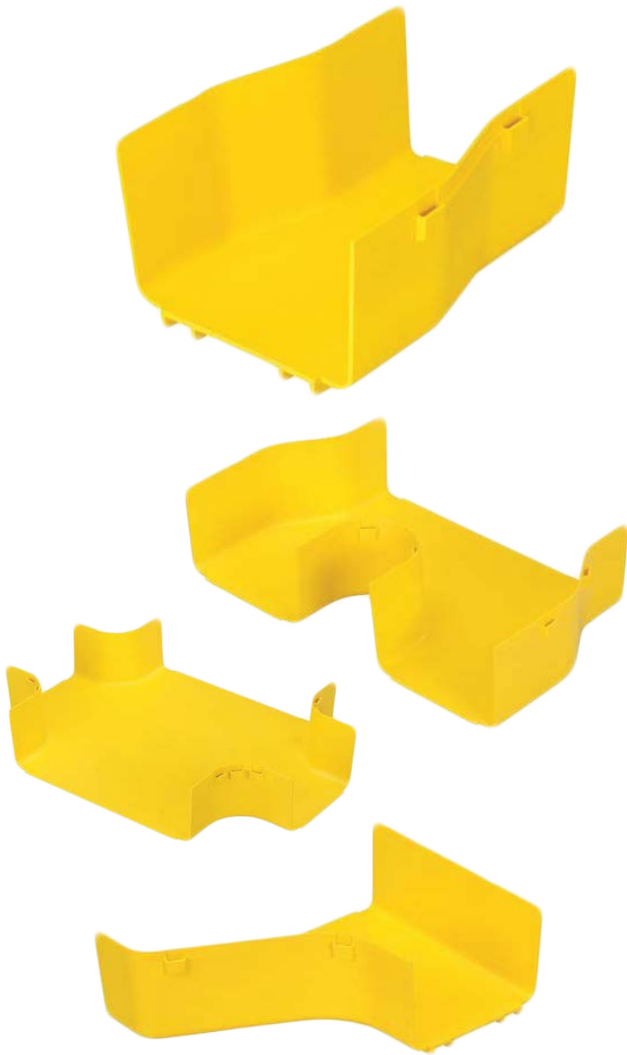
#### Descriptions

**Product Type** : Angled Fitting Cover  
**Material** : Polycarbonate / ABS  
**Color** : Yellow/ Black

Part No.	SIZE (In.)
FROVRASC4LYL	4 x 4
FROVRASC6LYL	6 x 4
FROVRASC12LYL	12 x 4

### Fiber Runner

#### Fittings, Split Covers & Spillouts



**FR\*\*\*\*\*YL**

FiberRunner® reducer

#### FiberRunner® Reducer

The FiberRunner® Fitting attaches to the FiberRunner® Channel and/or fitting can be reduced to smaller size of the FiberRunner® Channel and/or fitting.

#### Standard

- UL Listed to 2024A
- GR-63-CORE
- RoHS Compliant

#### Descriptions

**Product Type** : Reducer split  
**Material** : Polycarbonate / ABS  
**Color** : Yellow/ Black

Part No.	REDUCER SIZE (In.)
FRRF6FR4LYL	6x4 To 4x4
FRRF126LSYL	12x4 To 6x4
FRT12X4W6LYL	12x4 To 6x4 (T Type)
FRFWC12X4W6LYL	12x4 To 6x4 (4 Way)
FRY126LYL	12x4 To 6x4 (2 Channel)
FRRF126LSYL	12x4 To 6x4 (RIGHT)
FRRF126LLYL	12x4 To 6x4 (LEFT)
FRRF2412LYL	24x4 To 12x4
FRT24X4W12LYL	24x4 To 12x4 (T Type)
FRFWC24X4W12L	24x4 To 12x4 (4 Way)

### Fiber Runner

#### Fittings, Split Covers & Spillouts

#### FiberRunner® Reducer Cover

The FiberRunner® Split Cover is for the reducer fitting. The split cover has a snap-on feature that allows the cover to be installed and removed with no tools required. It creates a radiused 0.75 inch opening for easy access to add or remove cables.

#### Standard

- UL Listed to 2024A
- GR-63-CORE
- RoHS Compliant

#### Descriptions

- Product Type** : Reducer split covers  
**Material** : Polycarbonate / ABS  
**Color** : Yellow/ Black

Part No.	REDUCER SIZE (In.)
FRRF6FR4SCLYL	6x4 To 4x4
FRRF126SCLYL	12x4 To 6x4
FRTSC12W6LYL	12x4 To 6x4 (T Type)
FRFWCSC12W6LYL	12x4 To 6x4 (4 Way)
FRY126SCLYL	12x4 To 6x4 (2 Channel)
FRRF126RSCLYL	12x4 To 6x4 (RIGHT)
FRRF126LSCLYL	12x4 To 6x4 (LEFT)
FRRF2412CVYL	24x4 To 12x4
FRTC24W12LYL	24x4 To 12x4 (T Type)
FRFWCCV24W12LYL	24x4 To 12x4 (4 Way)



**FR\*\*\*\*CLYL**

FiberRunner® reducer Cover

## Fiber Runner

### Fittings, Split Covers & Spillouts



#### FRVT\*X4LYL

FiberRunner® Vertical Tee 90 DEGREE

#### FiberRunner® Vertical Tee 90 degree

The FiberRunner® Vertical Tee creates a 90° vertical drop from a horizontal run. The vertical tee includes a hinged door.

#### Standard

- UL Listed to 2024A
- GR-63-CORE
- RoHS Compliant

#### Descriptions

**Product Type** : Spillouts  
**Material** : Polycarbonate / ABS  
**Color** : Yellow/ Black

Part No.	SIZE (In.)
FRVT4X4LYL	4 x 4
FRVT6X4LYL	6 x 4
FRVT12X4LYL	12 x 4



#### FRTR\*X4LYL

3-Sided Vertical Tee Trumpet Spillout

#### 3-Sided Vertical Tee Trumpet Spillout

The FiberRunner® 3-Sided Vertical Tee Trumpet Spillout Fitting is used in cable routing systems to limit the bend radius of the cable to 2 inches when exiting from a 4x4 or 6x4 FiberRunner® Vertical Tee.

#### Standard

- UL Listed to 2024A
- GR-63-CORE
- RoHS Compliant

#### Descriptions

**Product Type** : Trumpet  
**Material** : Polycarbonate / ABS  
**Color** : Yellow/ Black

Part No.	SIZE (In.)
FRTR4X4LYL	4 x 4
FTR2X2LYL	2 x 4
FRTR6X4LYL	6 x 4
FRTR12X4LYL	12 x 4

### Fiber Runner

#### Fittings, Split Covers & Spillouts



#### FRIDT\*X4LYL

FiberRunner® 2-Port Spillout

#### FiberRunner® 2-Port Spillout

The FiberRunner® 2-Port Spillout is used with a 4x4 fitting. The spillout is used to route cable into three separate 1.5 inch (3.8mm) diameter split corrugated tubing.

#### Standard

- UL Listed to 2024A
- GR-63-CORE
- RoHS Compliant

#### Descriptions

**Product Type** : Spillouts  
**Material** : Polycarbonate / ABS  
**Color** : Yellow/ Black

Part No.	SIZE (In.)
FRIDT4X4LYL	4 x 4
FRIDT6X4LYL	6 x 4
FIDT2X2LYL (1 port)	2 x 2



#### FRHD\*KTYL

FiberRunner® Vertical Cable Manager

#### FiberRunner® Vertical Cable Manager Kit

The FiberRunner® Vertical Cable Manager Kit provides a secure, accessible route for cables spilling out from a vertical tee or spill-over junction.

#### Standard

- UL Listed to 2024A
- GR-63-CORE
- RoHS Compliant

#### Descriptions

**Product Type** : Spillouts  
**Material** : ABS  
**Color** : Yellow/ Black

Part No.	SIZE (In.)
FRHD4KTYL	4 x 4
FRHD2KTYL	2 x 2

### Fiber Runner

#### Fittings, Split Covers & Spillouts



#### FRVT\*X4LYL

The FiberRunner® Spill-Over Junction

#### FiberRunner® Spill-Over Junction

The FiberRunner® Spill-Over Junction Fitting is used in cable routing systems. It mounts directly to the existing installation with no alteration required.

#### Standard

- UL Listed to 2024A
- GR-63-CORE
- RoHS Compliant

#### Descriptions

**Product Type** : Spill-Over Junction  
**Material** : Polycarbonate / ABS  
**Color** : Yellow/ Black

Part No.	SIZE (In.)
FRSPJ4X4LYL	4 x 4
FRSPJ2X2LYL	2 x 2



#### FRSPJC\*LXL

The FiberRunner® Spill-Over Junction Cover

#### FiberRunner® Spill-Over Junction Cover

The FiberRunner® Spill-Over Junction Cover is used to fully enclose channel in conjunction with the FiberRunner® Spill-Over Junction. The cover snaps onto the channel base. The hinged feature provides easy access to add or remove cables.

#### Standard

- UL Listed to 2024A
- GR-63-CORE
- RoHS Compliant

#### Descriptions

**Product Type** : Spill-Over Junction Cover  
**Material** : Polycarbonate / ABS  
**Color** : Yellow/ Black

Part No.	SIZE (In.)
FRSPJC24LYL	4 x 4
FRSPJC26LYL	6 x 4
FRSPJC212LYL	12 x 4



### Fiber Runner

#### Fittings, Split Covers & Spillouts



#### FRT\*X4LYL

FiberRunner® End Cap

#### FiberRunner® End Cap

The FiberRunner® End Cap Fitting is used for closing off open ends of the channel or fittings. The end caps assist in creating a structure that protects fiber optic and high-performance copper data cabling from physical damage.

#### Standard

- UL Listed to 2024A
- GR-63-CORE
- RoHS Compliant

#### Descriptions

**Product Type** : Cap fittings  
**Material** : Polycarbonate / ABS  
**Color** : Yellow/ Black

Part No.	SIZE (In.)
FREC4X4LYL	4 x 4
FREC6X4LYL	6 x 4
FREC12X4LYL	12 x 4
FREC24X4LYL	24 x 4



#### FIDT2X2LYL

FiberRunner® 1-Port Spillout

#### FiberRunner® 1-Port Spillout

The FiberRunner® 1-Port Spillout is used with a fitting. The spillout is used to route cable into three separate 1.5 inch diameter split corrugated tubing.

#### Standard

- UL Listed to 2024A
- GR-63-CORE
- RoHS Compliant

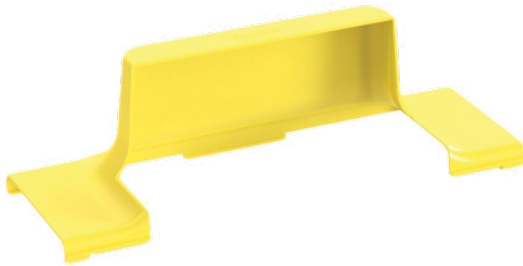
#### Descriptions

**Product Type** : spillouts  
**Material** : ABS  
**Color** : Yellow/ Black

Part No.	SIZE (In.)
FIDT2X2LYL	2 x 2

## Fiber Runner

### Fittings, Split Covers & Spillouts



#### FRSPJC4\*LYL

FiberRunner® Cover for Spill-Over Junction

#### FiberRunner® Cover for Spill-Over Junction

The FiberRunner® Cover is used to fully enclose channel in conjunction with the FiberRunner® Spill-Over Junction. The cover snaps onto the channel base. The hinged feature provides easy access to add or remove cables.

#### Standard

- UL Listed to 2024A
- GR-63-CORE
- RoHS Compliant

#### Descriptions

**Product Type** : Spill-Over Junction Cover  
**Material** : Polycarbonate / ABS  
**Color** : Yellow/ Black

Part No.	SIZE (In.)
FRSPJC44LYL	4 x 4
FRSPJC46LYL	6 x 2
FRSPJC412LYL	12 x 4



#### CLT150F-X4

CLT150F-X4 Loom Tubing

#### CLT150F-X4 Loom Tubing

The CLT150F-X4 Corrugated Loom Slit Wall Tubing protects cables from impact and abrasion. Features a slit for easy installation onto a bundle of wires or a pre-assembled harness assembly, increasing productivity. Hold in place with cable ties and accessories.

#### Standard

- UL Listed to 2024A
- GR-63-CORE
- RoHS Compliant

#### Descriptions

**Product Type** : Corrugated Loom Tubing  
**Material** : Polyethylene  
**Color** : Yellow

### Fiber Runner

#### QuikLock™ Mounting Brackets

##### FiberRunner® New Threaded Rod Bracket

The FiberRunner® QuikLock™ New Threaded Rod Bracket is used to support the 6x4 and 4x4 systems from any new threaded rod installation. It is secured to a threaded rod with two split nuts. It is used for a 0.5 inch threaded rod. The pre-assembled slide clamps enable fast assembly to the channel.

#### Standard

- UL Listed to 2024A
- GR-63-CORE
- RoHS Compliant

#### Descriptions

- Product Type** : Mounting Brackets  
**Material** : Steel  
**Color** : Black



**FR6TRBN12**

FiberRunner® New Threaded Rod Bracket



**FR6USB**

FiberRunner® Underfloor Pedestal



**FR6TRBE12**

FiberRunner® Existing Threaded Rod Bracket



**FR6ALB**

Mounting Ladder Bracket for Fiber Pathways

### Fiber Runner

#### QuikLock™ Mounting Brackets



**FR6CS12**

FiberRunner® Center Support, For Threaded Rod



**F2PCLB12**

FiberRunner® Ladder rack



**FR6ACB12N**

FiberRunner® Adjustable C Bracket



**FR6LRB**

FiberRunner® Ladder Rack For 3/8" Threaded Rod



**FR6TB12**

FiberRunner® Trapeze



**FR6LB**

FiberRunner® L Wall Mount Cabinet Bracket

### Fiber Runner

#### QuikLock™ Mounting Brackets

---



**FRRMBNF58**

FiberRunner® Rack Mount Bracket



**FR4PRB58**

FiberRunner® 4 Post



**FR6ACAB**

FiberRunner® Adjustable Cabinet Bracket

### Fiber Runner

#### QuikLock™ Mounting Brackets

##### FiberRunner® Trapeze Bracket

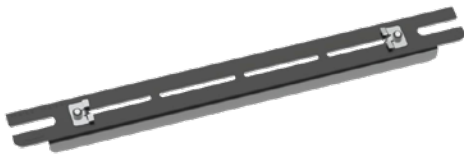
The FiberRunner® QuikLock™ Trapeze Bracket is used to support the 12x4 system by spanning two threaded rod drops that are 18 inches apart. It can be installed from above or below. It is used for a 0.5 inch threaded rod. The QuikLock™ Trapeze Bracket is secured to each threaded rod with two nuts. The pre-assembled slide clamps enable fast assembly to the channel.

##### Standard

- UL Listed to 2024A
- GR-63-CORE
- RoHS Compliant

##### Descriptions

- Product Type** : Mounting Brackets  
**Material** : Steel  
**Color** : Black



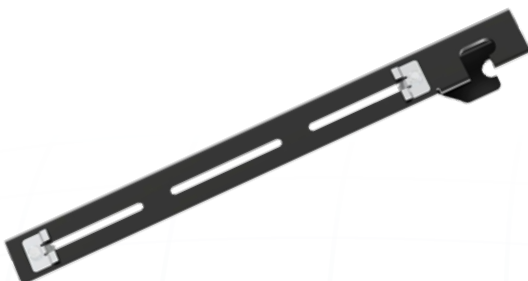
**FR12TB12**

FiberRunner® Trapeze Bracket



**FR12USB**

FiberRunner® Underfloor Pedestal



**FR12TRBE58**

FiberRunner® Existing Threaded Rod Bracket



**FR12ALB**

Mounting Ladder Bracket for Fiber Pathways

### Fiber Runner

#### QuikLock™ Mounting Brackets



**FR12CS12**

FiberRunner® Center Support



**FR12ACAB**

FiberRunner® Adjustable Cabinet Bracket



**FR12ACB12N**

FiberRunner® Adjustable C Bracket



**FR4PRB58**

FiberRunner® 4 Post

### Fiber Runner

#### QuikLock™ Mounting Brackets

##### FiberRunner® New Threaded Rod

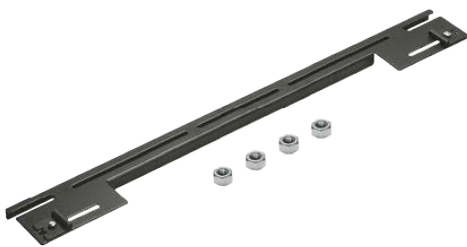
Used to support the 24x4 system from new threaded rod installations. Bracket is secured to threaded rod with two nuts. The pre-assembled slide clamps enable fast assembly to channel. Use 7/16" nut driver on slide clamps

##### Standard

- UL Listed to 2024A
- GR-63-CORE
- RoHS Compliant

##### Descriptions

**Product Type** : Mounting Brackets  
**Material** : Steel  
**Color** : Black



**FR12TB12**

FiberRunner® Trapeze Bracket



**FR12USB**

FIBERRUNNER® UNDERFLOOR PEDESTAL



**FRSTRCBL**

FiberRunner® Strut Clip Kit



**F2PCLB12**

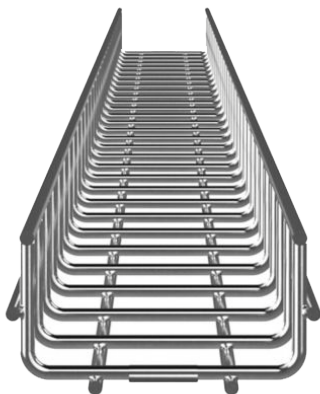
FIBERRUNNER® LADDER RACK





## Wire Basket

### Wire Basket Pathway



**PWB\*\*\*\***

Wire Basket Overhead Cable Tray



### Wire Basket Overhead Cable Tray

The Wire Basket Overhead Cable Tray Routing System shall consist of pathway sections, splice connectors, sidewalls, waterfalls, mounting brackets, and accessories designed to route and manage copper, fiber optic, or power cables.

### Standard

- UL Listed, 392.6(A) and 392.6(B) of the NFPA 70 National Electric Code with AMD 1-5 and NEMA VE1.
- Black and White: Complies with ASTM 510
- Electro Zinc: ASTM B633 SC3, Type III

### Descriptions

**Product Type** : Wire Basket  
**Material** : Steel  
**Color** : Electro Zinc, Black, White  
**Length** : 3000 mm

Part No.	SIZE (In.) (H x W)	COLOR	Part No.	SIZE (In.) (H x W)	COLOR	Part No.	SIZE (In.) (H x W)	COLOR
PWB2X4EZ	2 x 4	Electro Zinc	PWB2X4BL	2 x 4	Black	PWB2X4WH	2 x 4	White
PWB2X6EZ	2 x 6		PWB2X6BL	2 x 6		PWB2X6WH	2 x 6	
PWB2X8EZ	2 x 8		PWB2X8BL	2 x 8		PWB2X8WH	2 x 8	
PWB2X12EZ	2 x 12		PWB2X12BL	2 x 12		PWB2X12WH	2 x 12	
PWB2X18EZ	2 x 18		PWB2X18BL	2 x 18		PWB2X18WH	2 x 18	
PWB2X24EZ	2 x 24		PWB2X24BL	2 x 24		PWB2X24WH	2 x 24	
PWB4X4EZ	4 x 4		PWB4X4BL	4 x 4		PWB4X4WH	4 x 4	
PWB4X6EZ	4 x 6		PWB4X6BL	4 x 6		PWB4X6WH	4 x 6	
PWB4X8EZ	4 x 8		PWB4X8BL	4 x 8		PWB4X8WH	4 x 8	
PWB4X12EZ	4 x 12		PWB4X12BL	4 x 12		PWB4X12WH	4 x 12	
PWB4X18EZ	4 x 18		PWB4X18BL	4 x 18		PWB4X18WH	4 x 18	
PWB4X24EZ	4 x 24		PWB4X24BL	4 x 24		PWB4X24WH	4 x 24	
PWB6X4EZ	6 x 4		PWB6X4BL	6 x 4		PWB6X4WH	6 x 4	
PWB6X6EZ	6 x 6		PWB6X6BL	6 x 6		PWB6X6WH	6 x 6	
PWB6X8EZ	6 x 8		PWB6X8BL	6 x 8		PWB6X8WH	6 x 8	
PWB6X12EZ	6 x 12		PWB6X12BL	6 x 12		PWB6X12WH	6 x 12	
PWB6X18EZ	6 x 18		PWB6X18BL	6 x 18		PWB6X18WH	6 x 18	
PWB6X24EZ	6 x 24		PWB6X24BL	6 x 24		PWB6X24WH	6 x 24	

## Wire Basket

### Wire Basket Mounting Option



#### PWBTB\*\*

The Wire Bakset Trapeze Bracket



### The Wire Bakset Trapeze Bracket

The Wire Bakset Trapeze Bracket is used in cable routing systems to support a 4, 6, 8, 12, 18, 24 inch-wide Wire Basket. The hardware for attaching the bracket is sold separately. The Trapeze Bracket is sold in packages of two.

#### Standard

- UL Listed, 392.6(A) and 392.6(B) of the NFPA 70 National Electric Code with AMD 1-5 and NEMA VE1.
- Black and White: Complies with ASTM 510
- Electro Zinc: ASTM B633 SC3, Type III

#### Descriptions

- Product Type** : Wire Basket mounting option  
**Material** : Steel  
**Color** : Electro Zinc, Black, White

Part No.	Basket Width (In.)	COLOR
PWBTB4EZ	4	Electro Zinc
PWBTB6EZ	6	
PWBTB8EZ	8	
PWBTB12EZ	12	
PWBTB18EZ	18	
PWBTB24EZ	24	

Part No.	Basket Width (In.)	COLOR
PWBTB4BL	4	Black
PWBTB6BL	6	
PWBTB8BL	8	
PWBTB12BL	12	
PWBTB18BL	18	
PWBTB24BL	24	

Part No.	Basket Width (In.)	COLOR
PWBTB4WH	4	White
PWBTB6WH	6	
PWBTB8WH	8	
PWBTB12WH	12	
PWBTB18WH	18	
PWBTB24WH	24	

## Wire Basket

### Wire Basket Mounting Option



#### PWBCB\*\*

Cantilever Bracket



#### Cantilever Bracket

The Panduit Cantilever Bracket is used in cable routing system which supports the 4, 6, 8, 12, 18, 24 inch basket. The mounting hardware for attaching the cantilever bracket is sold separately.

#### Standard

- UL Listed, 92.6(A) and 392.6(B) of the NFPA 70 National Electric Code with AMD 1-5 and NEMA VE1.
- Black and White: Complies with ASTM 510
- Electro Zinc: ASTM B633 SC3, Type III

#### Descriptions

- Product Type** : Wire Basket mounting option  
**Material** : Steel  
**Color** : Electro Zinc, Black, White

Part No.	Basket Width (In.)	COLOR
PWBCB4EZ	4	Electro Zinc
PWBCB6EZ	6	
PWBCB8EZ	8	
PWBCB12EZ	12	
PWBCB18EZ	18	
PWBCB24EZ	24	

Part No.	Basket Width (In.)	COLOR
PWBCB4BL	4	Black
PWBCB6BL	6	
PWBCB8BL	8	
PWBCB12BL	12	
PWBCB18BL	18	
PWBCB24BL	24	

Part No.	Basket Width (In.)	COLOR
PWBCB4WH	4	White
PWBCB6WH	6	
PWBCB8WH	8	
PWBCB12WH	12	
PWBCB18WH	18	
PWBCB24WH	24	

## Wire Basket

### Wire Basket Mounting Option



#### PWBWMBV\*\*

Wire Basket Vertical Wall Mount Bracket



#### Wire Basket Vertical Wall Mount Bracket

Wire Basket Vertical Wall Mount Bracket can be used to mount against a wall. There is also the option to mount to unistrut.

#### Standard

- UL Listed, 92.6(A) and 392.6(B) of the NFPA 70 National Electric Code with AMD 1-5 and NEMA VE1.
- Black and White: Complies with ASTM 510
- Electro Zinc: ASTM B633 SC3, Type III

#### Descriptions

**Product Type** : Wire Basket mounting option  
**Material** : Steel  
**Color** : Electro Zinc, Black, White

Part No.	COLOR
PWBWMBVEZ	Electro Zinc
PWBWMBVBL	Black
PWBWMBVWH	White

#### Wire Basket Narrow Wall Termination bracket

Wire Basket Narrow Wall Termination brackets come in a set of 2 pieces. To be used with 4" and 12" basket. It requires PWBHK\*\* which is sold separately

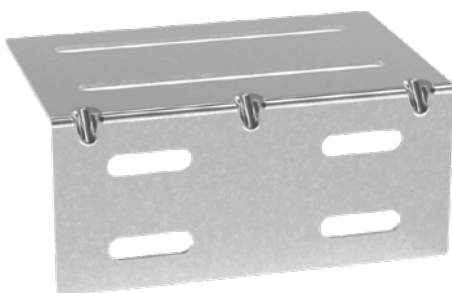
#### Standard

- UL Listed, 92.6(A) and 392.6(B) of the NFPA 70 National Electric Code with AMD 1-5 and NEMA VE1.
- Black and White: Complies with ASTM 510
- Electro Zinc: ASTM B633 SC3, Type III

#### Descriptions

**Product Type** : Wire Basket mounting option  
**Material** : Steel  
**Color** : Electro Zinc, Black, White

Part No.	COLOR
PBWMNEZ	Electro Zinc
PBWMNBL	Black
PBWMNWH	White



#### PBWMN\*\*

Wire Basket Wall Termination Bracket



### Wire Basket

#### Wire Basket Mounting Option



**PWBWMW\*\***

Wire Basket Wide Wall Termination bracket



#### Wire Basket Wide Wall Termination bracket

Wire Basket Wide Wall Termination brackets comes in a set of 2 pieces. It is meant to be used with 6", 8", 18" and 24" basket . It requires PWBHK\*\* which is sold separately

#### Standard

- UL Listed, 92.6(A) and 392.6(B) of the NFPA 70 National Electric Code with AMD 1-5 and NEMA VE1.
- Black and White: Complies with ASTM 510
- Electro Zinc: ASTM B633 SC3, Type III

#### Descriptions

: Wire Basket mounting option

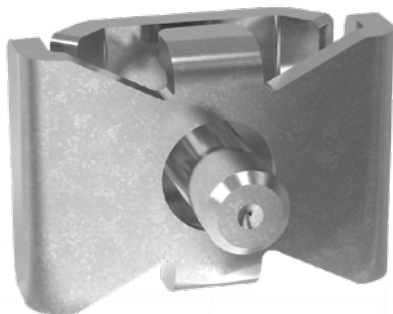
**Product Type** : Steel

**Material** : Electro Zinc, Black, White

**Color**

Part No.	COLOR
PWBWMWEZ	Electro Zinc
PWBWMWBL	Black
PWBWMWWH	White

#### Wire Basket Hardware



**PWBSPL\*\***

Wire Basket Bolted Style Splice

#### Wire Basket Bolted Style Splice

The Wire Basket Bolted Style Splice is available in Electro Zinc, black finish. This splice can be used to obtain a UL bond when properly applied.

#### Standard

- UL Listed, 92.6(A) and 392.6(B) of the NFPA 70 National Electric Code with AMD 1-5 and NEMA VE1.
- Black and White: Complies with ASTM 510
- Electro Zinc: ASTM B633 SC3, Type III

#### Descriptions

**Product Type** : Wire Basket hardware

**Material** : Steel

**Color** : Electro Zinc, Black, White

Part No.	COLOR
PWBSPLEZ	Electro Zinc
PWBSPLBL	Black

## Wire Basket

### Wire Basket Hardware



#### PWBPS\*\*

Wire Basket Vertical Wall Mount Bracket



#### The push on style splice

The push on style splice is used in cable routing systems and connects two pathways together.

#### Standard

- UL Listed, 92.6(A) and 392.6(B) of the NFPA 70 National Electric Code with AMD 1-5 and NEMA VE1.
- Black and White: Complies with ASTM 510
- Electro Zinc: ASTM B633 SC3, Type III

#### Descriptions

**Product Type** : Wire Basket hardware  
**Material** : Steel  
**Color** : Electro Zinc, Black

Part No.	COLOR
PWBPEZ	Electro Zinc
PWBPSBL	Black



#### PWBFES\*\*

Wire Basket Flat Expansion Splice Bar



#### Wire Basket Flat Expansion Splice Bar

Wire Basket Flat Expansion can be used to allow to accommodate for gaps between the basket. It can be used for all wire basket sizes ranging from 4" through 24".

#### Standard

- UL Listed, 92.6(A) and 392.6(B) of the NFPA 70 National Electric Code with AMD 1-5 and NEMA VE1.
- Black and White: Complies with ASTM 510
- Electro Zinc: ASTM B633 SC3, Type III

#### Descriptions

**Product Type** : Wire Basket hardware  
**Material** : Steel  
**Color** : Electro Zinc, Black

Part No.	COLOR
PWBFESZ	Electro Zinc
PWBFESBL	Black

### Wire Basket

#### Wire Basket Hardware



#### PWBPS\*\*

Wire Basket Vertical Wall Mount Bracket

COLOR  

#### Wire Basket Trapeze Support Bracket

Wire Basket Trapeze Support Bracket can be used to support baskets ranging from 4" wide through 12". It comes packaged in quantities of 50 pcs

#### Standard

- UL Listed, 92.6(A) and 392.6(B) of the NFPA 70 National Electric Code with AMD 1-5 and NEMA VE1.
- Black and White: Complies with ASTM 510
- Electro Zinc: ASTM B633 SC3, Type III

#### Descriptions

**Product Type** : Wire Basket hardware  
**Material** : Steel  
**Color** : Electro Zinc, Black

Part No.	COLOR
PWBTSBEZ	Electro Zinc
PWBTSBBL	Black



#### PWBS\*\*

Wire Basket Strut Clip

COLOR  

#### Wire Basket Strut Clip

Wire Basket Strut Clip is available in a 50 piece package. It is to be used with unistrut. It can be used for all sizes of the Wire Basket.

#### Standard

- UL Listed, 92.6(A) and 392.6(B) of the NFPA 70 National Electric Code with AMD 1-5 and NEMA VE1.
- Black and White: Complies with ASTM 510
- Electro Zinc: ASTM B633 SC3, Type III

#### Descriptions

**Product Type** : Wire Basket hardware  
**Material** : Steel  
**Color** : Electro Zinc, Black

Part No.	COLOR
PWBSCEZ	Electro Zinc
PWBSBBL	Black



### Wire Basket

#### Wire Basket Hardware



#### PWBHK\*\*

Wire Basket Hardware Kit



#### Wire Basket Hardware Kit

Wire Basket Hardware Kit is a 50 piece set that includes 50 c-clips and 50 c-keps nuts.

This hardware kit can be used in multiple products such as the wide and narrow termination bracket, expansion splice and intersection splices

#### Standard

- UL Listed, 92.6(A) and 392.6(B) of the NFPA 70 National Electric Code with AMD 1-5 and NEMA VE1.
- Black and White: Complies with ASTM 510
- Electro Zinc: ASTM B633 SC3, Type III

#### Descriptions

**Product Type** : Wire Basket hardware  
**Material** : Steel  
**Color** : Electro Zinc, Black

Part No.	COLOR
PWBHKEZ	Electro Zinc
PWBHKBL	Black

### Wire Basket

#### Wire Basket Intersection



#### PWBFES\*\*

Radius Intersection 90 Brackets



#### Radius Intersection 90 Brackets

The radius intersection allows you to build tees or crosses in the wire basket. It is intended to be used for 2", 4", 6" high basket.

#### Standard

- UL Listed, 92.6(A) and 392.6(B) of the NFPA 70 National Electric Code with AMD 1-5 and NEMA VE1.
- Black and White: Complies with ASTM 510
- Electro Zinc: ASTM B633 SC3, Type III

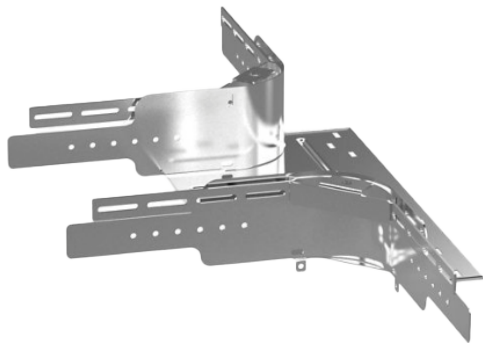
#### Descriptions

**Product Type** : Wire Basket hardware  
**Material** : Steel  
**Color** : Electro Zinc, Black

Part No.	Basket Height (In.)	COLOR
PWBIB2EZ	2	Electro Zinc
PWBIB4EZ	4	
PWBIB6EZ	6	
PWBIB2BL	2	Black
PWBIB4BL	4	
PWBIB6BL	6	

## Wire Basket

### Wire Basket Intersection



#### PWBPF\*\*

The Formed Tee Fitting



#### Formed Tee Fitting

The Formed Tee Fitting provides the needed coverage for a 90 degree turn. The formed tee comes complete with a base liner, two brackets and two side liners in order to protect cables from any sharp edges. The tee fitting also comes with two mounting hole locations to be used with threaded rod.

#### Standard

- UL Listed, 92.6(A) and 392.6(B) of the NFPA 70 National Electric Code with AMD 1-5 and NEMA VE1.
- Black and White: Complies with ASTM 510
- Electro Zinc: ASTM B633 SC3, Type III

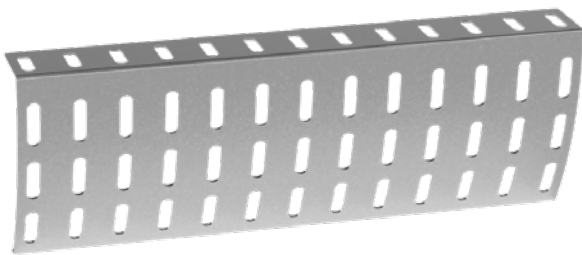
#### Descriptions

- Product Type** : Wire Basket intersection  
**Material** : Steel  
**Color** : Electro Zinc, Black, White

Part No.	SIZE (In.) (H x W)	COLOR	Part No.	SIZE (In.) (H x W)	COLOR	Part No.	SIZE (In.) (H x W)	COLOR
PWBPF2X4EZ	2 x 4	Electro Zinc	PWBPF2X4BL	2 x 4	Black	PWBPF2X4WH	2 x 4	White
PWBPF2X6EZ	2 x 6		PWBPF2X6BL	2 x 6		PWBPF2X6WH	2 x 6	
PWBPF2X8EZ	2 x 8		PWBPF2X8BL	2 x 8		PWBPF2X8WH	2 x 8	
PWBPF2X12EZ	2 x 12		PWBPF2X12BL	2 x 12		PWBPF2X12WH	2 x 12	
PWBPF2X18EZ	2 x 18		PWBPF2X18BL	2 x 18		PWBPF2X18WH	2 x 18	
PWBPF2X24EZ	2 x 24		PWBPF2X24BL	2 x 24		PWBPF2X24WH	2 x 24	
PWBPF4X4EZ	4 x 4		PWBPF4X4BL	4 x 4		PWBPF4X4WH	4 x 4	
PWBPF4X6EZ	4 x 6		PWBPF4X6BL	4 x 6		PWBPF4X6WH	4 x 6	
PWBPF4X8EZ	4 x 8		PWBPF4X8BL	4 x 8		PWBPF4X8WH	4 x 8	
PWBPF4X12EZ	4 x 12		PWBPF4X12BL	4 x 12		PWBPF4X12WH	4 x 12	
PWBPF4X18EZ	4 x 18		PWBPF4X18BL	4 x 18		PWBPF4X18WH	4 x 18	
PWBPF4X24EZ	4 x 24		PWBPF4X24BL	4 x 24		PWBPF4X24WH	4 x 24	
PWBPF6X4EZ	6 x 4		PWBPF6X4BL	6 x 4		PWBPF6X4WH	6 x 4	
PWBPF6X6EZ	6 x 6		PWBPF6X6BL	6 x 6		PWBPF6X6WH	6 x 6	
PWBPF6X8EZ	6 x 8		PWBPF6X8BL	6 x 8		PWBPF6X8WH	6 x 8	
PWBPF6X12EZ	6 x 12		PWBPF6X12BL	6 x 12		PWBPF6X12WH	6 x 12	
PWBPF6X18EZ	6 x 18		PWBPF6X18BL	6 x 18		PWBPF6X18WH	6 x 18	
PWBPF6X24EZ	6 x 24		PWBPF6X24BL	6 x 24		PWBPF6X24WH	6 x 24	

## Wire Basket

### Wire Basket Waterfalls



#### PWBDOK\*\*

Wire Basket 12" Drop Out Kit

COLOR  

#### Wire Basket 12" Drop Out Kit

Wire Basket 12" drop out kit is meant to be mounted to the sides of the baskets. It comes with all the necessary hardware to mount to all the basket sizes.

#### Standard

- UL Listed, 92.6(A) and 392.6(B) of the NFPA 70 National Electric Code with AMD 1-5 and NEMA VE1.
- Black and White: Complies with ASTM 510
- Electro Zinc: ASTM B633 SC3, Type III

#### Descriptions

**Product Type** : Wire Basket waterfalls  
**Material** : Steel  
**Color** : Electro Zinc, Black

Part No.	COLOR
PWBDOKEZ	Electro Zinc
PWBDOKBL	Black



#### PWBWFN\*\*

Narrow Bottom Waterfall

COLOR  

#### Narrow Bottom Waterfall

The narrow bottom waterfall can be used on different sizes of basket. The waterfall snaps on into the basket without the need for tools. The waterfall allows for bend radius control where needed.

#### Standard

- UL Listed, 92.6(A) and 392.6(B) of the NFPA 70 National Electric Code with AMD 1-5 and NEMA VE1.
- Black and White: Complies with ASTM 510
- Electro Zinc: ASTM B633 SC3, Type III

#### Descriptions

**Product Type** : Wire Basket waterfalls  
**Material** : Steel  
**Color** : Electro Zinc, Black

Part No.	COLOR
PWBWFNEZ	Electro Zinc
PWBWFNBL	Black

### Wire Basket

#### Wire Basket Waterfalls



#### PWBFW\*\*

Wide Bottom Waterfall

COLOR ● ●

#### Wide Bottom Waterfall

The wide bottom waterfall can be used on different sizes of basket. The waterfall snaps on into the basket without the need for tools. The waterfall allows for bend radius.

#### Standard

- UL Listed, 92.6(A) and 392.6(B) of the NFPA 70 National Electric Code with AMD 1-5 and NEMA VE1.
- Black and White: Complies with ASTM 510
- Electro Zinc: ASTM B633 SC3, Type III

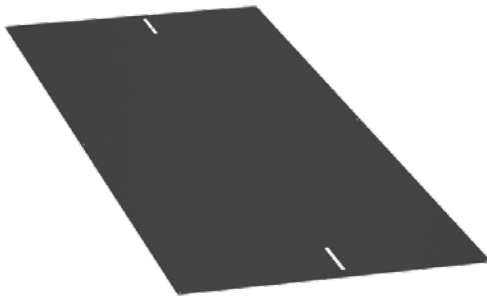
#### Descriptions

**Product Type** : Wire Basket waterfalls  
**Material** : Steel  
**Color** : Electro Zinc, Black

Part No.	COLOR
PWBFWEZ	Electro Zinc
PWBFWBL	Black

## Wire Basket

### Wire Basket Tray Liner



#### PWBTL\*\*

Tray Liner for Basket



#### Tray Liner for Basket

Tray Liner for Wire Basket that provides bottom surface protection for the basket. It comes with two pieces that are 63" length. One standard package covers one 10ft long length of pathway.

#### Standard

- UL Listed, 92.6(A) and 392.6(B) of the NFPA 70 National Electric Code with AMD 1-5 and NEMA VE1.
- Black and White: Complies with ASTM 510
- Electro Zinc: ASTM B633 SC3, Type III

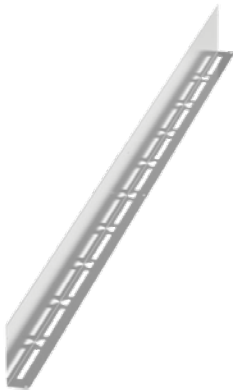
#### Descriptions

**Product Type** : Wire Basket Tray Liner  
**Material** : Steel  
**Color** : Electro Zinc, Black

Part No.	Basket Width (In.)	COLOR
PWBTL4PG	4	Pre-Galvanized
PWBTL6PG	6	
PWBTL8PG	8	
PWBTL12PG	12	
PWBTL18PG	18	
PWBTL24PG	24	
PWBTL4BL	4	Black
PWBTL6BL	6	
PWBTL8BL	8	
PWBTL12BL	12	
PWBTL18BL	18	
PWBTL24BL	24	

## Wire Basket

### Wire Basket Divider Wall



**PWBTL\*\***

Tray Divider Wall

COLOR ● ●

### Tray Divider Wall

It is used to provide cable separation on the overhead cable tray routing system's pathway sections. It is designed to help route and manage copper, fiber optic, or power cables. The divider comes in standard packages of one with two 63" length divider wall that will cover a 10ft basket.

### Standard

- UL Listed, 92.6(A) and 392.6(B) of the NFPA 70 National Electric Code with AMD 1-5 and NEMA VE1.
- Black and White: Complies with ASTM 510
- Electro Zinc: ASTM B633 SC3, Type III

### Descriptions

**Product Type** : Wire Basket Divider Wall  
**Material** : Steel  
**Color** : Electro Zinc, Black

Part No.	Basket Width (In.)	COLOR
PWBDW2PG	2	Pre-Galvanized
PWBDW4PG	4	
PWBDW6PG	6	
PWBDW2BL	2	Black
PWBDW4BL	4	
PWBDW6BL	6	



# **POWER DISTRIBUTION UNIT**



# Power Distribution Unit



Reset ● Status ●

**PANDUIT**

PANDUIT PDU

L1:247V	5.10A
L2:248V	5.10A
L3:246V	5.20A

192.168.31.58  
Guest 1

Menu Scroll Select

Sensor 1 Sensor 2/Serial

PDU in PDU Out

Ethernet USB

B4-N

B3-N

ON OFF

ON OFF

B3

B3

B3-N

B4-N

## BASIC SERIES

### Basic PDU

#### Panduit™ Basic PDU

Basic Rack PDUs provide reliable power distribution for all devices in your cabinets and racks. They range in power from 1.4 kVA – 22 kVA per cabinet in single-phase and three-phase voltages, horizontal, and vertical form factors.



**E\*\*B\*\*M**

Panduit™ Basic PDU

#### Standard

- CE
- UKCA
- ROHS
- REACH
- China ROHS

#### Descriptions

<b>Product Type</b>	: PDU
<b>Includes</b>	: Mounting Hardware
<b>Mount Orientation</b>	: Horizontal , Vertical
<b>Sub Brand</b>	: ES2P
<b>Rack PDU Type</b>	: Basic
<b>Plug Type</b>	: IEC C20 200-240V Inlet , IEC 60309 2P+E 6h 16A (IP44) , IEC 60309 2P+E 6h 32A (IP44) , IEC 60309 3P+N+E 6h 16A (IP44) , IEC 60309 3P+N+E 6h 32A (IP44)
<b>Number of Circuit Breakers</b>	: 0 , 2 , 6
<b>Input Voltage</b>	: 230V , 400V
<b>Input Amperage</b>	: 16A , 32A
<b>Phase</b>	: Single Phase , 3 Phase
<b>Frequency Compatibility</b>	: 50/60 Hz
<b>Output Receptacles</b>	: C13 , C19
<b>Output Voltage</b>	: 230 V
<b>Output Capacity</b>	: 3.7 kW , 7.4 kW , 11kW , 22kW
<b>Material</b>	: Metal
<b>Finish/Coating</b>	: Powder-Coated
<b>Color</b>	: Black

Part No.	Input Voltage VAC	Input Current Amps / Phase	Form Factor	Circuit Breakers	Apparent Power	Outlet	Outlet Configuration	
E12B01M	100 - 240	16/1	Horizontal (1U)	0	3.7	12	12	
E22B39M			0U HALF			22	20  2	
E24B10M			0U MID			24	20  4	
E24B11M			0U FULL			30	24  6	
E30B06M	100-240/346-415, WYE	32/1	0U MID	2	7.4	30	24  6	
E30B13M				0		11	42	30  12
E42B11M				6		22	42	30  12

## MI SERIES

### Monitored Input PDU

#### Panduit™ Monitored Input PDU

Monitored Input (MI) Rack PDUs have the ability for aggregate power monitoring to quickly identify potential power issues, and reclaim available or under-utilized power capacity.



**E\*\*D\*\*M**

Panduit™ Monitored Input PDU

#### Standard

- CE
- UKCA
- ROHS
- REACH
- China ROHS

#### Descriptions

<b>Product Type</b>	: PDU
<b>Includes</b>	: Mounting Hardware
<b>Mount Orientation</b>	: Horizontal , Vertical
<b>Sub Brand</b>	: ES2P
<b>Rack PDU Type</b>	: Monitored Input
<b>Plug Type</b>	: IEC C20 200-240V Inlet , IEC 60309 2P+E 6h 16A (IP44) , IEC 60309 2P+E 6h 32A (IP44) , IEC 60309 3P+N+E 6h 16A (IP44) , IEC 60309 3P+N+E 6h 32A (IP44)
<b>Current Measurement Accuracy</b>	: ±2%
<b>Voltage Measurement Accuracy</b>	: ±2%
<b>Power Measurement Accuracy</b>	: ±2%
<b>Network Monitoring Port</b>	: Fast Ethernet network port
<b>SNMP Compatibility</b>	: Yes
<b>Network Compatibility</b>	: 10 Mbps, 100 Mbps (Fast Ethernet)
<b>Front Panel Display</b>	: Yes
<b>Number of Circuit Breakers</b>	: 0 , 2 , 6
<b>Input Voltage</b>	: 230V , 400V
<b>Input Amperage</b>	: 16A , 32A
<b>Phase</b>	: Single Phase , 3 Phase
<b>Frequency Compatibility</b>	: 50/60 Hz
<b>Output Receptacles</b>	: C13 , C19
<b>Output Voltage</b>	: 230 V
<b>Output Capacity</b>	: 3.7 kW , 7.4 kW , 11kW , 22kW
<b>Material</b>	: Metal
<b>Finish/Coating</b>	: Powder-Coated
<b>Color</b>	: Black

Part No.	Input Voltage VAC	Input Current Amps / Phase	Form Factor	Circuit Breakers	Apparent Power	Outlet	Outlet Configuration
E08D01M	100-240	16/1	Horizontal (1U)		3.7	8	8
E21D10M	100-240		0U MID	0		21	18 C13 3 C19
E24D12M	200-240/346-415, WYE	16/3			11	24	21 C13 3 C19
E24D03M	100-240	32/1	0U FULL	2	7.4	24	20 C13 4 C19
E36D01M	200-240/346-415, WYE	32/3			6	22	36
E42D06M	100-240	32/1		2	7.4	42	36 C13 6 C19

## MSPO SERIES

### Monitored Switched per Outlet PDU

#### Panduit™ Monitored & Switched per Outlet PDU

Monitored Switched per Outlet (MSPO) Rack PDUs have the ability for outlet level (and aggregate) power monitoring and outlet level switching capabilities for individual outlets or a group of outlets. Power monitoring at the individual outlet level provides actionable management data on the power consumption of each connected IT device enabling the redeployment or decommissioning of individual servers to reclaim available or under-utilized power capacity. Ideal for remote power reset, and cabinet power on sequencing and restrict unauthorized use of individual outlets.



Panduit™ Monitored & Switched per Outlet PDU

#### Standard

- CE
- UKCA
- ROHS
- REACH
- China ROHS

#### Descriptions

<b>Product Type</b>	: PDU
<b>Includes</b>	: Mounting Hardware
<b>Mount Orientation</b>	: Vertical
<b>Sub Brand</b>	: ES2P
<b>Rack PDU Type</b>	: Monitored & Switched per Outlet
<b>Plug Type</b>	: IEC 60309 2P+E 6h 16A (IP44) , IEC 60309 2P+E 6h 32A (IP44) , IEC 60309 3P+N+E 6h 16A (IP44) , IEC 60309 3P+N+E 6h 32A (IP44)
<b>Current Measurement Accuracy</b>	: ±2%
<b>Voltage Measurement Accuracy</b>	: ±2%
<b>Power Measurement Accuracy</b>	: ±2%
<b>Network Monitoring Port</b>	: Fast Ethernet network port
<b>SNMP Compatibility</b>	: Yes
<b>Network Compatibility</b>	: 10 Mbps, 100 Mbps (Fast Ethernet)
<b>LED Indicators</b>	: Green LED indicates outlet is on
<b>Front Panel Display</b>	: Yes
<b>Number of Circuit Breakers</b>	: 0 , 2 , 6
<b>Input Voltage</b>	: 230V , 400V
<b>Input Amperage</b>	: 16A , 32A
<b>Phase</b>	: Single Phase , 3 Phase
<b>Frequency Compatibility</b>	: 50/60 Hz
<b>Output Receptacles</b>	: C13 , C19
<b>Output Voltage</b>	: 230 V
<b>Output Capacity</b>	: 3.7 kW , 7.4 kW , 11kW , 22kW
<b>Material</b>	: Metal
<b>Finish/Coating</b>	: Powder-Coated
<b>Color</b>	: Black

Part No.	Input Voltage VAC	Input Current Amps / Phase	Form Factor	Circuit Breakers	Apparent Power	Outlet	Outlet Configuration
E24G11M	100-240	16/1	OU FULL	0	3.7	24	20 C13 4 C19
E24G07M	100-240/346-415, WYE	16/3		11	18 C13 6 C19		
E24G06M	100-240	32/1		2	7.4		20 C13 4 C19
E24G08M	100-240/346-415, WYE	32/3		6	22		18 C13 6 C19





# Single Source For Your Needs

[www.royaltec.com](http://www.royaltec.com)



## Contact us



Royaltec Thailand



@royaltec

## Our Location



### Head Office

350 Soi Ladprao 94, Ladprao Rd., Plubpla,  
Wangthonglang, Bangkok 10310 Thailand  
Tel. : +66 2934 4790  
Fax : +66 2539 4028  
Email : [info@royaltec.com](mailto:info@royaltec.com)



### Rayong Office

267/209-210 Sukhumvit Road, Maptaphut,  
Muang, Rayong 21150 Thailand



### Warehouse

359/1-2 Ramkhamhaeng 39, Ramkhamhaeng Rd.,  
Wangthonglang, Bangkok 10310 Thailand