

# LPRC300



## New License Plate Recognition Camera

with a Dual-core Processor for Outstanding Performance



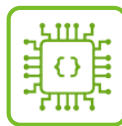
LPRC300 is ZKTeco's new generation of license plate recognition cameras adopting a 0.5 TOPS chip and an embedded deep learning algorithm. The camera can provide higher license plate recognition performance, widely adaptable to parking and access control environments. It also supports the platform to remotely monitor device status and update algorithms and firmware.

Moreover, LPRC300 can operate independently offline after being imported allowlist and blocklist data via a web browser, which usually applies in monthly parking management, especially under scenarios like the factory, governmental building, residential area, etc. All captured pictures and recordings would be saved in the camera.

### Features



Embedded Deep Learning  
LPR Algorithm



AI Chip with 0.5 TOPS



Embedded Allowlist and  
Blocklist



ONVIF Protocol,  
for Video Surveillance



Free SDK and push protocol  
supporting 3rd-party integration



3 MP

# Specifications

Model	LPRC300
License Plate Recognition Specifications	
Platform	HiCV500
License Plate Number Recognition Accuracy Rate	Day ≥ 99%, night ≥ 99%
Recognition Speed	≤100ms
Classification	License plate number
Adaptable Speed of Car	Up to 40 km/h
Recognition Distance	3m to 10m (the recommended distance is 3m to 5m)
Output Information	License plate number, License plate picture, Access time
Supported Regions	Thailand, Argentina, Mexico, Chile, Colombia, Saudi Arabia, Brazil, Peru, Mongolia, Turkey, Egypt, Korea, Mainland China, Indonesia, United Arab Emirates, Myanmar, Spain, Russian, Vietnam, Cambodia, etc.
Offline Working Parameters	
Allowlist	1,000
Blocklist	1,000
Monthly Parking	8,000
Entry and Exit Records	10,000
Captured Pictures	10,000
Camera Parameters	
CPU	Dual-core CPU A7@900MHz 0.5 TOPS
Flash	128MB
Image Sensor	1/2.8" 3MP CMOS sensor
Illumination	0.1Lux (Default)
Lens	Autofocus (from 3.2mm to 11.1mm)
Resolutions	2304*1296P, 1920*1080, 1280*720P, 704*576P
Compression	H.264 / H.265 / MJPEG
Frame Rate	1 to 25 frames; 25 frames by default (1920*1080 pixels)
Pixel	300W
Communication Protocol	TCP/IP (10/100Mbps), RTSP, ZKTECO, P2P, PUSH
I/O Interface	Two relays, RS485, AUX I/O, Barrier status input, Wiegand in and out
SD Storage	Default 8GB, maximum support 128GB
Picture Format	JPG
Recognition Trigger	Video trigger (by default), loop detection
Protection Level	IP65
Working Voltage	12V DC
Power	≤7.5W
Working Temperature	-30°C to 70°C
Working Humidity	≤90%
Dimensions (L*W*H)	460 * 156 * 120 (mm)
Weight	2.5kg

## System Topology



## Applications



Communities



Business Centers



Governmental Buildings



Industrial Parks

## Accessory Products



LPR-Fixed Column



LPR-Fill Light



LPR-Display Screen (Optional)

V1.0 2021.03.16



Copyright©2021 ZKTECO CO., LTD. All rights reserved.

**CDG** | Computer Peripheral and Supplies Ltd.

**Computer Peripheral and Supplies Ltd.**

244 Soi Pattanakarn 53, Pattanakarn, Suanluang,  
Bangkok 10250 Thailand

### Contact Us

Tel : (66) 0-2322-9535, 0-2722-4040

Fax : (66) 0-2322-7990

E-Mail : sales.dept@cps.co.th

Web site : www.cps.co.th, www.facebook.com/cps.co.th

### More Details

Scan Here

LINE ID

Need more

Information

