

NT 1511

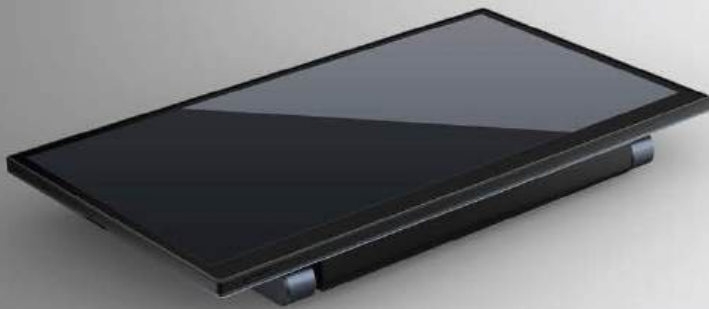
15.6 INCH POS TERMINAL - J6412

Ultra-thin design style / Fashionable and simple / Suitable for use in various stores



PRACTICAL METAL BASE DESIGN

- *Enough space to place Printer device
- *Saving more desktop space for customers



MODERN AND SLIM ALUMINUM FOLDING STAND

- *Save more transportation costs for customers

RICH I/O PORT COMBINATIONS



Features

- 15.6inch FANLESS POS Terminal
- 1920*1080 resolution Capacitive touch
- Industrial Grade Mainboard
- Rich I/O Port Combinations
- Hidden cable management for space management
- OS compatible : Windows 10 / Windows 10 IOT / Windows 11
- Flexible architectures for peripheral MSR / VFD / Second display



Specifications

Processor

Intel® Core i3-1115G4/ 6 MB Intel® Smart Cache
Clock speed 3.00 GHz / Up to 4.10GHz /

Memory Storage

RAM DDR4-2666 / 2933/3200MHz / 8GB Up to 32GB
SSD M.2 Sata 256 GB

OS compatible

Windows 10 / Windows 10 IOT / Windows 11

Display Size

Screen 15.6 Inches
10-point Projected Capacitive Touch
1920*1080
250cd/m²
600:1
10ms

Touch

Resolution

Brightness

Contrast Ratio

Response Time

Viewing Angle (Up / Down / Left / Right)

89° / 89° / 89° / 89°
EDP

Video Interface

I/O Interface

DC12V IN
1×HDMI
5×USB2.0
1×USB3.0
2×RS232
1×CASH DRAWER(RJ11)

Operating Humidity

Operating Temperature

Dimensions (W x D x H)

Packing Dimensions (W x D x H)

Safety

Power

10% to 85%
-10°C to 50°C
365 (W) x 233 (D) x 45 (H) mm
480 (W) x 370 (D) x 110 (H) mm
FCC / CE / RoHS
Input:AC 100-240V
Output:DC 12V / 5A



With 10.1" Second Display



With MSR / VFD Display

