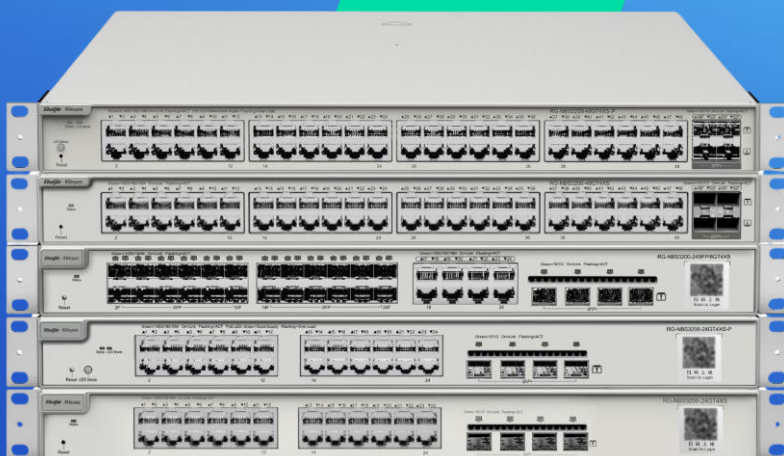


# RG-NBS31/32 Series Cloud Managed Switches

DATASHEET

[Explore More](#) 



## Highlights

- Enterprise-class Quality Ensures High Performance
- Multiple Security Policies Protect Your Network
- Lifetime management on Ruijie Cloud at anytime anywhere

**CDG** | Computer Peripheral  
and Supplies Ltd.

Computer Peripheral and Supplies Ltd.  
244 Soi Pattanakarn 53, Pattanakarn, Suanluang,  
Bangkok 10250 Thailand

### Contact Us

Tel : (66) 0-2322-9535, 0-2722-4040  
Fax : (66) 0-2322-7990  
E-Mail : sales.dept@cps.co.th  
Web site : www.cps.co.th, www.facebook.com/cps.co.th

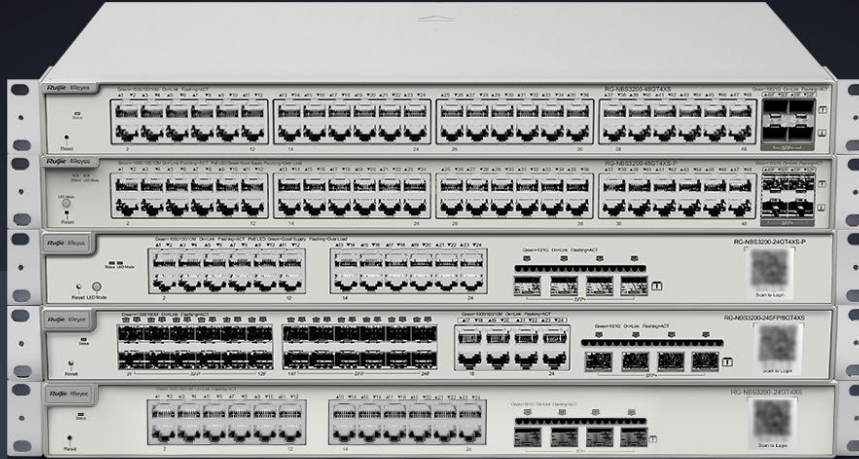
### More Details

Scan Here  
LINE ID  
Need more  
Information



# Highlight Features

## RG-NBS3000 Series Layer 2 Switch



PoE Budget  
370W



Max. 30W  
on Each Port



Surge Protection  
6KV



5 Years  
Warranty

## Abundant PoE Application Scenarios



# Highlight Features

## Enterprise-class Quality Ensures High Performance

[Link Aggregation](#)   [IGMP Snooping](#)   [VLAN](#)



## Enterprise-class Quality Ensures High Performance

[Link Aggregation](#)   [IGMP Snooping](#)   [VLAN](#)



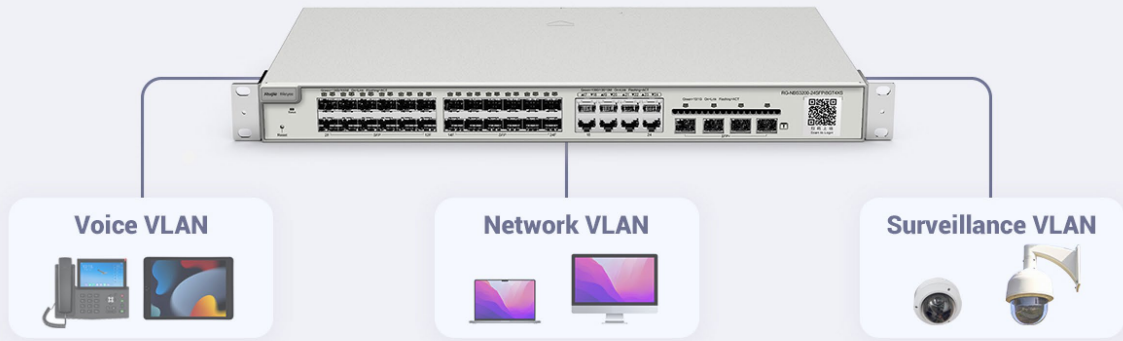
# Highlight Features

## Enterprise-class Quality Ensures High Performance

Link Aggregation

IGMP Snooping

**VLAN**



## Multiple Security Policies Protect Your Network

**Security**

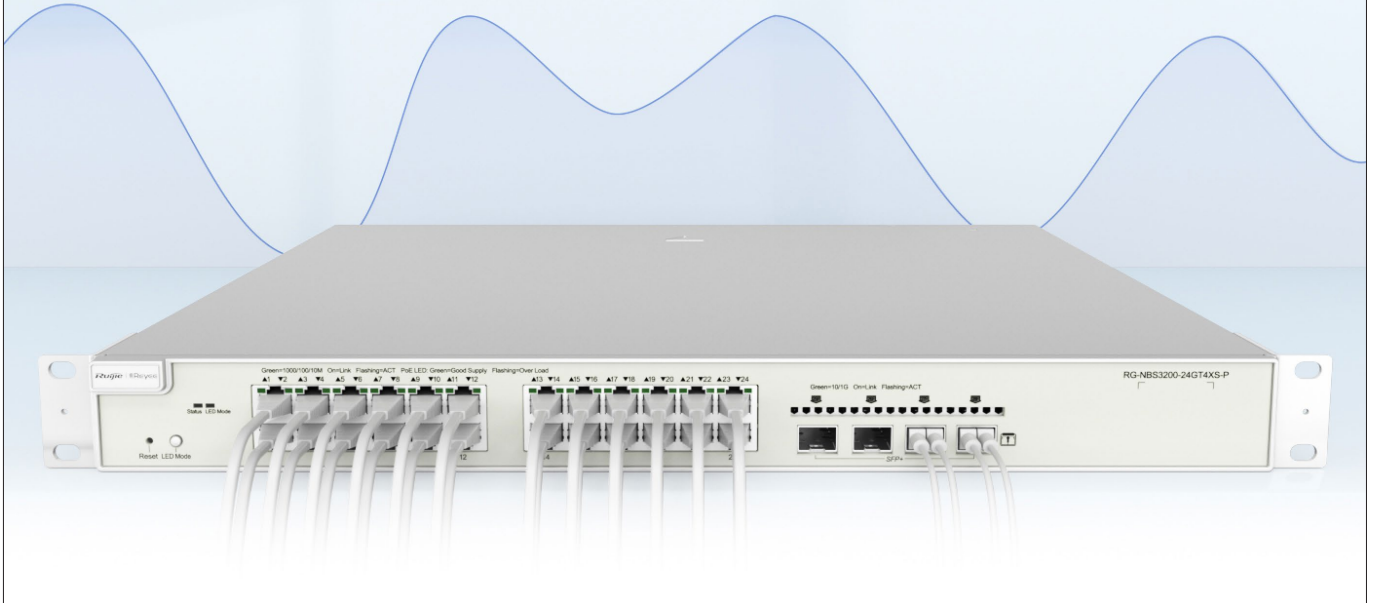
Stability



# Highlight Features

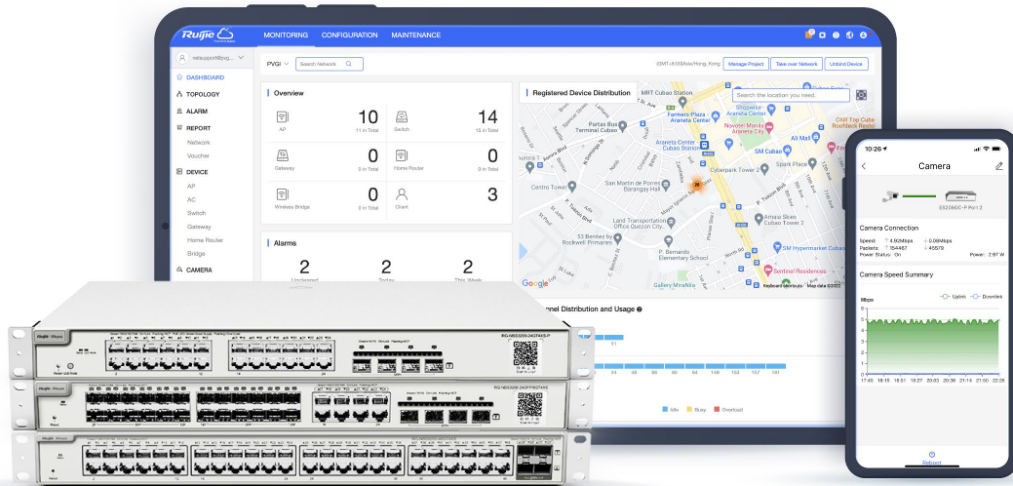
## Multiple Security Policies Protect Your Network

Security **Stability**



## Cloud, Make Your Business Easy

- SON, zero touch provisioning to Cloud
- Monitor switch statistics at anytime anywhere
- Configure VLANs on Ruijie Cloud APP
- Easy maintenance, save onsite time and cost



# Specifications

Specifications		RG-NBS3100-8GT2SFP	RG-NBS3100-24GT4SFP-V2	RG-NBS3100-8GT2SFP-P-V2	RG-NBS3100-24GT4SFP-P-V2	RG-NBS3100-48GT4SFP-P
<b>Hardware Specifications</b>						
<b>Port</b>	Total Number of RJ45 Ports	8	24	8	24	48
	Total Number of Optical Ports	2	4	2	4	4
	Number of 1GE SFP ports	2	4	2	4	4
	Number of 1GE RJ45 ports	8	24	8	24	48
<b>POE</b>	Number of PoE/PoE+ out ports	N/A	N/A	8	24	48
	PoE budget	N/A	N/A	125W	370W	370W
	PoE power pins	N/A	N/A	1/2(+),3/6(-)	1/2(+),3/6(-)	1 2+ 3 6-
<b>System Specifications</b>	CPU	MAC chip with a built-in single-core CPU, 500MHz	MAC chip with a built-in single-core CPU, 500MHz	MAC chip with a built-in single-core CPU, 500MHz	MAC chip with a built-in single-core CPU, 500MHz	MAC chip with a built-in dual-core CPU, 1GHz
	RAM	256MB	512MB	512MB	512MB	512MB
	Flash memory	16MB	16MB	16MB	16MB	256MB
	Recommended camera limit	200W H265:80 400W H265:40	200W H265:120 400W H265:60	200W H265:80 400W H265:40	200W H265:120 400W H265:60	200W H265:200 400W H265:100
	Forwarding rate	15Mpps	42Mpps	15Mpps	78Mpps	78Mpps
	Switching capacity	20Gbps	56Gbps	20Gbps	56Gbps	104Gbps
	Maximum number of VLANs	4094	4094	4094	4094	4094
	Maximum number of MAC address entries	8000	8000	8000	8000	16000

Specifications		RG-NBS3100-8GT2SFP	RG-NBS3100-24GT4SFP-V2	RG-NBS3100-8GT2SFP-P-V2	RG-NBS3100-24GT4SFP-P-V2	RG-NBS3100-48GT4SFP-P
	Maximum number of ARP entries	1000	1000	1000	1000	1000
	Maximum number of ACEs	In-1200 Out-0	In-1200 Out-0	In-1200 Out-0	In-1200 Out-0	In-1900 Out-0
<b>Power</b>	Power input	Power adapter input: Rated voltage range: 100-240V~ Maximum voltage range: 90-264V~ Frequency: 50/60Hz Rated current: 1A Power adapter output: Rated voltage: 12V DC Rated current: 1A	Rated voltage range: 100-240VAC Maximum voltage range: 90-264VAC Frequency: 50/60Hz Rated current: 0.6A	Rated voltage range: 100-240V~ Maximum voltage range: 90-264V~ Frequency: 50/60Hz Rated current: 2.5A	Rated voltage range: 100-240VAC Maximum voltage range: 90-264VAC Frequency: 50/60Hz Rated current: 6A	Maximum voltage range: 90-264V~ Frequency: 50/60Hz Rated current: 7A
	Maximum power consumption	≤8W	≤21W	No PoE load: ≤11W; Full PoE load: ≤145W	No PoE load: ≤21W; Full PoE load: ≤443W	No PoE load: 61.57W; Full PoE load: 447.69W
	Power output	12V/1A,12W	Vout=12V(2.2A),P=25W	Vout=54.5V(2.75A),P=150W	Vout=54V(7.6A),P=409W	90-264VAC,54.5V/8.26A,P=450W
	Input power supply	Power adapter	Single fixed power supply	Single fixed power supply	Single fixed power supply	Single fixed power supply
<b>FAN</b>	Fan	Fanless	Fanless	Fanless	1	2
	Heat dissipation	N/A	N/A	N/A	Left to right	Left to back & Right to back
	Fan speed adjustment	N/A	N/A	N/A	Hardware-based adjustment	Hardware-based adjustment
	Heat dissipation	27.36 BTU/hr(220V/50Hz)	71.82 BTU/hr(220V/50Hz)	No PoE load: ≤37.62 BTU/hr(220V/50Hz); Full PoE load: ≤495.9 BTU/hr(220V/50Hz)	No PoE load: ≤71.82 BTU/hr(220V/50Hz); Full PoE load: ≤1,515.06 BTU/hr(220V/50Hz)	No PoE load: ≤210.5694 BTU/hr(220V/50Hz); Full PoE load: ≤1,531.0998 BTU/hr(220V/50Hz)

Specifications		RG-NBS3100-8GT2SFP	RG-NBS3100-24GT4SFP-V2	RG-NBS3100-8GT2SFP-P-V2	RG-NBS3100-24GT4SFP-P-V2	RG-NBS3100-48GT4SFP-P
	Acoustic noise	Fanless	Fanless	Fanless	<45dB (when the device works normally)	<50dB (when the device works normally)
<b>Button</b>	Reset button	Yes	Yes	Yes	Yes	Yes
	DIP switch	N/A	N/A	LED MODE	LED MODE	LED MODE
<b>EMC</b>	EMC	EN 55032:2015+AC:2016	EN 55032:2015+AC:2016	EN 55032:2015+AC:2016	EN 55032:2015+AC:2016	EN 55032:2015+AC:2016
		EN 61000-3-2:2014	EN 61000-3-2:2014	EN 61000-3-2:2014	EN 61000-3-2:2014	EN 61000-3-2:2014
		EN 61000-3-3:2013	EN 61000-3-3:2013	EN 61000-3-3:2013	EN 61000-3-3:2013	EN 61000-3-3:2013
		EN 55035:2017	EN 55035:2017	EN 55035:2017	EN 55035:2017	EN 55035:2017
		ETSI EN 300 386 V2.1.1 (2016-07)	ETSI EN 300 386 V2.1.1 (2016-07)	ETSI EN 300 386 V2.1.1 (2016-07)	ETSI EN 300 386 V2.1.1 (2016-07)	ETSI EN 300 386 V2.1.1 (2016-07)
		ETSI EN 300 386 V2.1.1 (2016-07)	ETSI EN 300 386 V2.1.1 (2016-07)	ETSI EN 300 386 V2.1.1 (2016-07)	ETSI EN 300 386 V2.1.1 (2016-07)	ETSI EN 300 386 V2.1.1 (2016-07)
<b>Safety Compliance</b>	Safety compliance	IEC 62368-1	IEC 62368-1	IEC 62368-1	IEC 62368-1	IEC 62368-1
<b>Certification</b>	CE, FCC	CE;FCC	CE;FCC	CE;FCC	CE;FCC	CE;FCC
<b>Mounting</b>	Mounting	Rack installation	Rack installation	Rack installation	Rack installation	Rack installation
<b>Casing</b>	Casing	Metal	Metal	Metal	Metal	Metal
<b>Cable Hot-Swappable</b>	Hot swapping of cables	Supported by all ports	Supported by all ports	Supported by all ports	Supported by all ports	Supported by all ports
<b>Mean Time Between Failure (MTBF)</b>	MTBF	400000H	400000H	400000H	400000H	400000H
<b>Warranty</b>	Warranty Card	5	5	5	5	5
<b>EEE</b>	EEE	Yes	Yes	Yes	Yes	Yes
<b>Environment and Reliability</b>	Operating temperature	0 to 50°C	0~50°C	0~50°C	0~50°C	0 to 50°C
	Storage temperature	-40 to 70°C	-40~70°C	-40 to 70°C	-40~70°C	-40 to 70°C
	Operating humidity	10% to 90% RH(non-condensing)	10% to 90% RH(non-condensing)	10% to 90% RH(non-condensing)	10% to 90% RH(non-condensing)	10% to 90% RH(non-condensing)
	Storage humidity	5% to 95% RH(non-condensing)	5% to 95% RH(non-condensing)	5% to 95% RH(non-condensing)	5% to 95% RH(non-condensing)	5% to 95% RH(non-condensing)



Specifications		RG-NBS3100-8GT2SFP	RG-NBS3100-24GT4SFP-V2	RG-NBS3100-8GT2SFP-P-V2	RG-NBS3100-24GT4SFP-P-V2	RG-NBS3100-48GT4SFP-P
	Operating altitude	-500~5000M	-500~5000M	-500~5000M	-500~5000M	-500~5000M
	ESD protection	Air Discharge: 8kV Contact Discharge: 6kV	Air Discharge: 8kV Contact Discharge: 6kV	Air Discharge: 8kV Contact Discharge: 6kV	Air Discharge: 8kV Contact Discharge: 6kV	Air Discharge: 8kV Contact Discharge: 6kV
	Surge protection	Common Mode 6kV	Common Mode 6kV	Common Mode 6kV	Common Mode 6kV	Common Mode 6kV
	Surge protection	Common Mode 4kV Differential mode 2kV	Common Mode 6kV Differential mode 6kV	Common Mode 6kV Differential mode 6kV	Common Mode 6kV Differential mode 6kV	Common Mode 6kV Differential mode 6kV
<b>Package Contents</b>	Dimensions (W x D x H)	260mm x 120mm x 43.6mm	440mm x 165mm x 44mm	300mm x 205mm x 44mm	440mm x 215mm x 44mm	440mm x 357.6mm x 43.6mm
	Weight	1.2kg	2.4 kg	1.80kg	3kg	5.4 kg
	Shipping weight	1.6kg	2.52kg	2.50kg	3.53kg	7.13kg
	Rack-mount bracket	2	2	2	2	2
	Screw	M3 Screw*6	M4 Screw*6	M3 Screw*6	M4 Screw*6	M4 Screw*8
	User Manual	1	1	1	1	1
	Rubber pad	4	4	4	4	4
	Input power supply	Power adapter	Single fixed power supply	Single fixed power supply	Single fixed power supply	Single fixed power supply
	Warranty Card	1	1	1	1	1
<b>L2</b>						
<b>Jumbo Frame</b>	Jumbo frame length (MTU)	9216 Bytes(Global MTU)	9216 Bytes(Global MTU)	9216 Bytes(Global MTU)	9216 Bytes(Global MTU)	9216 Bytes(Per-port MTU)
<b>port</b>	Port flow control	Yes	Yes	Yes	Yes	Yes
	PoE watchdog	N/A	N/A	Yes	Yes	Yes
	Port isolation	Yes	Yes	Yes	Yes	Yes
	EEE	Yes	Yes	Yes	Yes	Yes
	Cable Test	Yes	Yes	Yes	Yes	Yes

Specifications		RG-NBS3100-8GT2SFP	RG-NBS3100-24GT4SFP-V2	RG-NBS3100-8GT2SFP-P-V2	RG-NBS3100-24GT4SFP-P-V2	RG-NBS3100-48GT4SFP-P
VLAN	IEEE802.1Q VLAN	Yes	Yes	Yes	Yes	Yes
	Port-based VLAN	Yes	Yes	Yes	Yes	Yes
	Voice VLAN	Yes	Yes	Yes	Yes	Yes
STP	STP (IEEE 802.1d)	Yes	Yes	Yes	Yes	Yes
	RSTP (IEEE 802.1w)	Yes	Yes	Yes	Yes	Yes
	MSTP (IEEE 802.1s)	Yes	Yes	Yes	Yes	Yes
G.8032 (ERPS)	ERPS	Yes	Yes	Yes	Yes	Yes
LLDP	LLDP	Yes	Yes	Yes	Yes	Yes
	LLDP-MED	Yes	Yes	Yes	Yes	Yes
SPAN	Port mirroring	Yes	Yes	Yes	Yes	Yes
	Mirroring	Yes	Yes	Yes	Yes	Yes
IGMP	IGMPv1 snooping	Yes	Yes	Yes	Yes	Yes
	IGMPv2 snooping	Yes	Yes	Yes	Yes	Yes
	Basic IGMPv3 snooping	Yes	Yes	Yes	Yes	Yes
	IGMP filtering	Yes	Yes	Yes	Yes	Yes
Mac Address	Static MAC address	Yes	Yes	Yes	Yes	Yes
	MAC address filtering	Yes	Yes	Yes	Yes	Yes
Link Aggregation	Static aggregation	Yes	Yes	Yes	Yes	Yes
	Load balancing	Yes	Yes	Yes	Yes	Yes
	LACP	Yes	Yes	Yes	Yes	Yes
Storm Suppression	Broadcast storm control	Yes	Yes	Yes	Yes	Yes
	Multicast storm control	Yes	Yes	Yes	Yes	Yes

Specifications		RG-NBS3100-8GT2SFP	RG-NBS3100-24GT4SFP-V2	RG-NBS3100-8GT2SFP-P-V2	RG-NBS3100-24GT4SFP-P-V2	RG-NBS3100-48GT4SFP-P
	Unknown unicast storm control	Yes	Yes	Yes	Yes	Yes
<b>L3</b>						
<b>IPv4</b>	IPv4 ping	Yes	Yes	Yes	Yes	Yes
	IPv4 traceroute	Yes	Yes	Yes	Yes	Yes
<b>IPv6 Configuration</b>	ICMPv6	Yes	Yes	Yes	Yes	Yes
	IPv6 ping	Yes	Yes	Yes	Yes	Yes
	IPv6 traceroute	Yes	Yes	Yes	Yes	Yes
<b>DNS</b>	DNS client	Yes	Yes	Yes	Yes	Yes
	DNSv6 client	Yes	Yes	Yes	Yes	Yes
<b>DHCP</b>	DHCP snooping	Yes	Yes	Yes	Yes	Yes
	DHCP client	Yes	Yes	Yes	Yes	Yes
<b>HTTP v6</b>	HTTP Access by IPv6	Yes	Yes	Yes	Yes	Yes
<b>High Features</b>						
<b>ACL</b>	Standard ACL	Yes	Yes	Yes	Yes	Yes
<b>ACL</b>	Extended MAC ACL	Yes	Yes	Yes	Yes	Yes
<b>ACL</b>	Extended IP ACL	Yes	Yes	Yes	Yes	Yes
<b>ACL</b>	IPv6 ACL	Yes	Yes	Yes	Yes	Yes
<b>QoS</b>	802.1p traffic classification	Yes	Yes	Yes	Yes	Yes
	DSCP-based traffic classification	Yes	Yes	Yes	Yes	Yes
	Egress queues based on 802.1p and DSCP	Yes	Yes	Yes	Yes	Yes
	SP	Yes	Yes	Yes	Yes	Yes
	WRR	Yes	Yes	Yes	Yes	Yes

Specifications		RG-NBS3100-8GT2SFP	RG-NBS3100-24GT4SFP-V2	RG-NBS3100-8GT2SFP-P-V2	RG-NBS3100-24GT4SFP-P-V2	RG-NBS3100-48GT4SFP-P
	SP+WRR	Yes	Yes	Yes	Yes	Yes
	Global QoS	Yes	Yes	Yes	Yes	Yes
	Interface-based rate limiting (ingress/egresses)	Yes	Yes	Yes	Yes	Yes
<b>Online Upgrade</b>	Online Upgrade	Yes	Yes	Yes	Yes	Yes
<b>RLOG</b>	RLOG	Yes	Yes	Yes	Yes	Yes
<b>Self-Organizing Network</b>	SON	Yes	Yes	Yes	Yes	Yes
<b>syslog</b>	System log	Yes	Yes	Yes	Yes	Yes
<b>Client Identification</b>	Client discovery	Yes	Yes	Yes	Yes	Yes
<b>ALARM</b>	Camera detection	Yes	Yes	Yes	Yes	Yes
	Loop alarm	Yes	Yes	Yes	Yes	Yes
	MAC address entries	Yes	Yes	Yes	Yes	Yes
	IP address pool conflicts	Yes	Yes	Yes	Yes	Yes
	PoE service failure	NO	NO	Yes	Yes	Yes
	PoE power overload	NO	NO	Yes	Yes	Yes
<b>Radius</b>	RADIUS	Yes	Yes	Yes	Yes	Yes
<b>802.1X</b>	802.1X authentication	Yes	Yes	Yes	Yes	Yes
	Port-based 802.1X authentication	Yes	Yes	Yes	Yes	Yes
	MAC-based 802.1X	Yes	Yes	Yes	Yes	Yes

Specifications		RG-NBS3100-8GT2SFP	RG-NBS3100-24GT4SFP-V2	RG-NBS3100-8GT2SFP-P-V2	RG-NBS3100-24GT4SFP-P-V2	RG-NBS3100-48GT4SFP-P
	authentication					
	Guest VLAN	Yes	Yes	Yes	Yes	Yes
<b>IP+MAC Port Binding</b>	IP-MAC-port binding	Yes	Yes	Yes	Yes	Yes
<b>Anti-ARP Spoofing</b>	ARP anti-spoofing	Yes	Yes	Yes	Yes	Yes
<b>IP Source Guard</b>	IP source guard	Yes	Yes	Yes	Yes	Yes
<b>CPU Protection Policy (CPP)</b>	CPU Protection Policy	Yes	Yes	Yes	Yes	Yes
<b>Management Features</b>						
<b>Web Management</b>	eWeb	Yes	Yes	Yes	Yes	Yes
<b>MACC</b>	Ruijie Cloud	Yes	Yes	Yes	Yes	Yes
<b>APP</b>	Ruijie Rejee App	Yes	Yes	Yes	Yes	Yes
<b>SNMP</b>	SNMPv1, v2c, and v3	Yes	Yes	Yes	Yes	Yes

## Specifications

Specifications		RG-NBS3200-24GT4XS	RG-NBS3200-48GT4XS	RG-NBS3200-24SFP/8GT4XS	RG-NBS3200-24GT4XS-P	RG-NBS3200-48GT4XS-P
<b>Hardware Specifications</b>						
<b>Port</b>	Total Number of RJ45 Ports	24	48	8	24	48
	Total Number of Optical Ports	4	4	28	4	4
	Number of Combo Ports	N/A	N/A	8	N/A	N/A
	Number of 1GE SFP ports	N/A	N/A	24	N/A	N/A

Specifications		RG-NBS3200-24GT4XS	RG-NBS3200-48GT4XS	RG-NBS3200-24SFP/8GT4XS	RG-NBS3200-24GT4XS-P	RG-NBS3200-48GT4XS-P
	Number of 10GE SFP+ ports	4	4	4	4	4
	Number of 1GE RJ45 ports	24	48	8	24	48
POE	Number of PoE/PoE+ out ports	N/A	N/A	N/A	24	48
	PoE budget	N/A	N/A	N/A	370W	370W
	PoE power pins	N/A	N/A	N/A	1 2+ 3 6-	1 2+ 3 6-
System Specifications	CPU	MAC chip with a built-in single-core CPU, 800MHz	MAC chip with a built-in dual-core CPU, 1GHz	MAC chip with a built-in single-core CPU, 800MHz	MAC chip with a built-in single-core CPU, 800MHz	MAC chip with a built-in dual-core CPU, 1GHz
	RAM	512MB	1GB	512MB	512MB	512MB
	Flash memory	256MB	256MB	256MB	256MB	256MB
	Recommended camera limit	200W H265:280 400W H265:140	200W H265:300 400W H265:150	200W H265:280 400W H265:140	200W H265:280 400W H265:140	200W H265:300 400W H265:150
	Forwarding rate	96Mpps	132Mpps	96Mpps	96Mpps	132Mpps
	Switching capacity	128Gbps	216Gbps	128Gbps	128Gbps	216Gbps
	Maximum number of VLANs	4094	4094	4094	4094	4094
	Maximum number of MAC address entries	16000	16000	16000	16000	16000
	Maximum number of ARP entries	1000	1000	1000	1000	1000
Routing table capacity (main unit routing)	6000	12000	6000	6000	12000	

Specifications		RG-NBS3200-24GT4XS	RG-NBS3200-48GT4XS	RG-NBS3200-24SFP/8GT4XS	RG-NBS3200-24GT4XS-P	RG-NBS3200-48GT4XS-P
	Maximum number of IPv4 static routes	64	64	64	64	64
	Routing table capacity (network routing)	128	500	128	128	500
	Maximum number of IPv6 static routes	64	64	64	64	64
	Maximum number of ACEs	In-1900 Out-0	In-1900 Out-0	In-1900 Out-0	In-1900 Out-0	In-1900 Out-0
<b>Power</b>	Power input	Rated voltage range: 100-240VAC Maximum voltage range: 90-264VAC Frequency: 50/60Hz Rated current: 1.5A	Rated voltage range: 100-240VAC Maximum voltage range: 90-264VAC Frequency: 50/60Hz Rated current: 2A	Rated voltage range: 100-240VAC Maximum voltage range: 90-264VAC Frequency: 50/60Hz Rated current: 2A	Rated voltage range: 100-240V~ Maximum voltage range: 90-264V~ Frequency: 50/60Hz Rated current: 6A	Maximum voltage range: 90-264V~ Frequency: 50/60Hz Rated current: 7A
	Maximum power consumption	28.028W	46.4W	41.8W	No PoE load: 42.48W; Full PoE load: 431.86W	No PoE load: 61.57W; Full PoE load: 447.69W
	Power output	12V/3.33A,P=40W	12V(5.84A),P=70W	12V(5.84A),P=70W	54V/6.9A,12V/3A, P=409W	54.5/8.26A,P=450W
	Input power supply	Single fixed power supply	Single fixed power supply	Single fixed power supply	Single fixed power supply	Single fixed power supply
<b>FAN</b>	Fan	1	2	2	2	2
	Heat dissipation	Left to back	Left to back &Right to back	Left to back	Left to right	Left to back &Right to back
	Fan speed adjustment	Hardware-based adjustment	Hardware-based adjustment	Hardware-based adjustment	Hardware-based adjustment	Hardware-based adjustment
	Heat dissipation	95.85576 BTU/hr(220V/50Hz)	158.688 BTU/hr(220V/50Hz)	142.956 BTU/hr(220V/50Hz)	No PoE load: ≤ 145.2816 BTU/hr(220V/50Hz);	No PoE load: ≤ 210.5694 BTU/hr(220V/50Hz);

Specifications		RG-NBS3200-24GT4XS	RG-NBS3200-48GT4XS	RG-NBS3200-24SFP/8GT4XS	RG-NBS3200-24GT4XS-P	RG-NBS3200-48GT4XS-P
					Full PoE load: ≤ 1,476.9612 BTU/hr(220V/50Hz)	Full PoE load: ≤ 1,531.0998 BTU/hr(220V/50Hz)
	Acoustic noise	<45dB (when the device works normally)	<45dB (when the device works normally)	<45dB (when the device works normally)	<45dB (when the device works normally)	<45dB (when the device works normally)
<b>Button</b>	Reset button	Yes	Yes	Yes	Yes	Yes
	DIP switch	N/A	N/A	N/A	LED MODE	LED MODE
<b>EMC</b>	EMC	EN 55032:2015+AC:2016	EN 55032:2015+AC:2016	EN 55032:2015+AC:2016	EN 55032:2015+AC:2016	EN 55032:2015+AC:2016
		EN 61000-3-2:2014	EN 61000-3-2:2014	EN 61000-3-2:2014	EN 61000-3-2:2014	EN 61000-3-2:2014
		EN 61000-3-3:2013	EN 61000-3-3:2013	EN 61000-3-3:2013	EN 61000-3-3:2013	EN 61000-3-3:2013
		EN 55035:2017	EN 55035:2017	EN 55035:2017	EN 55035:2017	EN 55035:2017
		ETSI EN 300 386 V2.1.1 (2016-07)	ETSI EN 300 386 V2.1.1 (2016-07)	ETSI EN 300 386 V2.1.1 (2016-07)	ETSI EN 300 386 V2.1.1 (2016-07)	ETSI EN 300 386 V2.1.1 (2016-07)
<b>Safety Compliance</b>	Safety compliance	IEC 62368-1	IEC 62368-1	IEC 62368-1	IEC 62368-1	IEC 62368-1
<b>Certification</b>	CE, FCC	CE;FCC	CE;FCC	CE;FCC	CE;FCC	CE;FCC
<b>Mounting</b>	Mounting	Rack installation	Rack installation	Rack installation	Rack installation	Rack installation
<b>Casing</b>	Casing	Metal	Metal	Metal	Metal	Metal
<b>Cable Hot-Swappable</b>	Hot swapping of cables	Supported by all ports	Supported by all ports	Supported by all ports	Supported by all ports	Supported by all ports
<b>Mean Time Between Failure (MTBF)</b>	MTBF	400000H	400000H	400000H	400000H	400000H
<b>Warranty</b>	Warranty Card	5	5	5	5	5
<b>EEE</b>	EEE	Yes	Yes	Yes	Yes	Yes
<b>Environment and Reliability</b>	Operating temperature	0 to 50°C	0 to 50°C	0 to 50°C	0 to 50°C	0 to 50°C
	Storage temperature	-40 to 70°C	-40 to 70°C	-40 to 70°C	-40 to 70°C	-40 to 70°C
	Operating humidity	10% to 90% RH(non-condensing)	10% to 90% RH(non-condensing)	10% to 90% RH(non-condensing)	10% to 90% RH(non-condensing)	10% to 90% RH(non-condensing)



Specifications		RG-NBS3200-24GT4XS	RG-NBS3200-48GT4XS	RG-NBS3200-24SFP/8GT4XS	RG-NBS3200-24GT4XS-P	RG-NBS3200-48GT4XS-P
	Storage humidity	5% to 95% RH(non-condensing)	5% to 95% RH(non-condensing)	5% to 95% RH(non-condensing)	5% to 95% RH(non-condensing)	5% to 95% RH(non-condensing)
	Operating altitude	-500~5000M	-500~5000M	-500~5000M	-500~5000M	-500~5000M
	ESD protection	Air Discharge: 8kV Contact Discharge: 6kV	Air Discharge: 8kV Contact Discharge: 6kV	Air Discharge: 8kV Contact Discharge: 6kV	Air Discharge: 8kV Contact Discharge: 6kV	Air Discharge: 8kV Contact Discharge: 6kV
	Surge protection	Common Mode 6kV	Common Mode 6kV	Common Mode 6kV	Common Mode 6kV	Common Mode 6kV
	Surge protection	Common Mode 6kV Differential mode 6kV	Common Mode 6kV Differential mode 6kV	Common Mode 6kV Differential mode 6kV	Common Mode 6kV Differential mode 6kV	Common Mode 6kV Differential mode 6kV
<b>Package Contents</b>	Dimensions (W x D x H)	440mm x 207.5mm x 43.6mm	440mm x 267.5mm x 43.6mm	440mm x 267.5mm x 43.6mm	440mm x 357.6mm x 43.6mm	440mm x 357.6mm x 43.6mm
	Weight	2.9 kg	3.6 kg	3.35 kg	4.75 kg	5.4 kg
	Shipping weight	4.02kg	5.14kg	4.9kg	6.51kg	7.13kg
	Rack-mount bracket	2	2	2	2	2
	Screw	M4 Screw*8	M4 Screw*8	M4 Screw*8	M4 Screw*8	M4 Screw*8
	User Manual	1	1	1	1	1
	Rubber pad	4	4	4	4	4
	Input power supply	Single fixed power supply	Single fixed power supply	Single fixed power supply	Single fixed power supply	Single fixed power supply
	Warranty Card	1	1	1	1	1
<b>L2</b>						
<b>Jumbo Frame</b>	Jumbo frame length (MTU)	9216 Bytes(Per-port MTU)	9216 Bytes(Per-port MTU)	9216 Bytes(Per-port MTU)	9216 Bytes(Per-port MTU)	9216 Bytes(Per-port MTU)
<b>port</b>	Port flow control	Yes	Yes	Yes	Yes	Yes
	PoE watchdog	N/A	N/A	N/A	Yes	Yes
	Port isolation	Yes	Yes	Yes	Yes	Yes

Specifications		RG-NBS3200-24GT4XS	RG-NBS3200-48GT4XS	RG-NBS3200-24SFP/8GT4XS	RG-NBS3200-24GT4XS-P	RG-NBS3200-48GT4XS-P
	EEE	Yes	Yes	Yes	Yes	Yes
	Cable Test	Yes	Yes	Yes	Yes	Yes
VLAN	IEEE802.1Q VLAN	Yes	Yes	Yes	Yes	Yes
	Port-based VLAN	Yes	Yes	Yes	Yes	Yes
	Voice VLAN	Yes	Yes	Yes	Yes	Yes
STP	STP (IEEE 802.1d)	Yes	Yes	Yes	Yes	Yes
	RSTP (IEEE 802.1w)	Yes	Yes	Yes	Yes	Yes
	MSTP (IEEE 802.1s)	Yes	Yes	Yes	Yes	Yes
G.8032 (ERPS)	ERPS	Yes	Yes	Yes	Yes	Yes
LLDP	LLDP	Yes	Yes	Yes	Yes	Yes
	LLDP-MED	Yes	Yes	Yes	Yes	Yes
SPAN	Port mirroring	Yes	Yes	Yes	Yes	Yes
	Mirroring	Yes	Yes	Yes	Yes	Yes
IGMP	IGMPv1 snooping	Yes	Yes	Yes	Yes	Yes
	IGMPv2 snooping	Yes	Yes	Yes	Yes	Yes
	Basic IGMPv3 snooping	Yes	Yes	Yes	Yes	Yes
	Full IGMPv3 snooping	Yes	Yes	Yes	Yes	Yes
	IGMP filtering	Yes	Yes	Yes	Yes	Yes
Mac Address	Static MAC address	Yes	Yes	Yes	Yes	Yes
	MAC address filtering	Yes	Yes	Yes	Yes	Yes
Link Aggregation	Static aggregation	Yes	Yes	Yes	Yes	Yes
	Load balancing	Yes	Yes	Yes	Yes	Yes

Specifications		RG-NBS3200-24GT4XS	RG-NBS3200-48GT4XS	RG-NBS3200-24SFP/8GT4XS	RG-NBS3200-24GT4XS-P	RG-NBS3200-48GT4XS-P
	LACP	Yes	Yes	Yes	Yes	Yes
Storm Suppression	Broadcast storm control	Yes	Yes	Yes	Yes	Yes
	Multicast storm control	Yes	Yes	Yes	Yes	Yes
	Unknown unicast storm control	Yes	Yes	Yes	Yes	Yes
<b>L3</b>						
ARP	ARP	Yes	Yes	Yes	Yes	Yes
IPv4	IPv4 ping	Yes	Yes	Yes	Yes	Yes
	IPv4 static route	Yes	Yes	Yes	Yes	Yes
	IPv4 traceroute	Yes	Yes	Yes	Yes	Yes
IPv6 Configuration	IPv6 static route	Yes	Yes	Yes	Yes	Yes
	ICMPv6	Yes	Yes	Yes	Yes	Yes
	IPv6 ping	Yes	Yes	Yes	Yes	Yes
	IPv6 traceroute	Yes	Yes	Yes	Yes	Yes
DNS	DNS client	Yes	Yes	Yes	Yes	Yes
	DNSv6 client	Yes	Yes	Yes	Yes	Yes
DHCP	DHCP relay	Yes	Yes	Yes	Yes	Yes
DHCP	DHCP snooping	Yes	Yes	Yes	Yes	Yes
DHCP	DHCP client	Yes	Yes	Yes	Yes	Yes
HTTP v6	HTTP Access by IPv6	Yes	Yes	Yes	Yes	Yes
<b>High Features</b>						
ACL	Standard ACL	Yes	Yes	Yes	Yes	Yes
	Extended MAC ACL	Yes	Yes	Yes	Yes	Yes
	Extended IP ACL	Yes	Yes	Yes	Yes	Yes

Specifications		RG-NBS3200-24GT4XS	RG-NBS3200-48GT4XS	RG-NBS3200-24SFP/8GT4XS	RG-NBS3200-24GT4XS-P	RG-NBS3200-48GT4XS-P
	IPv6 ACL	Yes	Yes	Yes	Yes	Yes
<b>QoS</b>	802.1p traffic classification	Yes	Yes	Yes	Yes	Yes
	DSCP-based traffic classification	Yes	Yes	Yes	Yes	Yes
	Egress queues based on 802.1p and DSCP	Yes	Yes	Yes	Yes	Yes
	SP	Yes	Yes	Yes	Yes	Yes
	WRR	Yes	Yes	Yes	Yes	Yes
	SP+WRR	Yes	Yes	Yes	Yes	Yes
	Global QoS	Yes	Yes	Yes	Yes	Yes
	Interface-based rate limiting (ingress/egress)	Yes	Yes	Yes	Yes	Yes
	<b>Online Upgrade</b>	Online Upgrade	Yes	Yes	Yes	Yes
<b>RLOG</b>	RLOG	Yes	Yes	Yes	Yes	Yes
<b>Self-Organizing Network</b>	SON	Yes	Yes	Yes	Yes	Yes
<b>syslog</b>	System log	Yes	Yes	Yes	Yes	Yes
<b>Client Identification</b>	Client discovery	Yes	Yes	Yes	Yes	Yes
<b>ALARM</b>	Camera detection	Yes	Yes	Yes	Yes	Yes
	Loop alarm	Yes	Yes	Yes	Yes	Yes
	MAC address entries	Yes	Yes	Yes	Yes	Yes
	IP address pool conflicts	Yes	Yes	Yes	Yes	Yes
	Full ARP table	Yes	Yes	Yes	Yes	Yes

Specifications		RG-NBS3200-24GT4XS	RG-NBS3200-48GT4XS	RG-NBS3200-24SFP/8GT4XS	RG-NBS3200-24GT4XS-P	RG-NBS3200-48GT4XS-P
	PoE service failure	NO	NO	NO	Yes	Yes
	PoE power overload	NO	NO	NO	Yes	Yes
<b>Radius</b>	RADIUS	Yes	Yes	Yes	Yes	Yes
<b>802.1X</b>	802.1X authentication	Yes	Yes	Yes	Yes	Yes
	Port-based 802.1X authentication	Yes	Yes	Yes	Yes	Yes
	MAC-based 802.1X authentication	Yes	Yes	Yes	Yes	Yes
	Guest VLAN	Yes	Yes	Yes	Yes	Yes
<b>IP+MAC Port Binding</b>	IP-MAC-port binding	Yes	Yes	Yes	Yes	Yes
<b>Anti-ARP Spoofing</b>	ARP anti-spoofing	Yes	Yes	Yes	Yes	Yes
<b>IP Source Guard</b>	IP source guard	Yes	Yes	Yes	Yes	Yes
<b>CPU Protection Policy (CPP)</b>	CPU Protection Policy	Yes	Yes	Yes	Yes	Yes
<b>Management Features</b>						
<b>Web Management</b>	eWeb	Yes	Yes	Yes	Yes	Yes
<b>MACC</b>	Ruijie Cloud	Yes	Yes	Yes	Yes	Yes
<b>APP</b>	Ruijie Rejee App	Yes	Yes	Yes	Yes	Yes
<b>SNMP</b>	SNMPv1, v2c, and v3	Yes	Yes	Yes	Yes	Yes

**Ruijie | Rcyce**

 **Redefine your easy network**

**CDG** | Computer Peripheral  
and Supplies Ltd.

**Computer Peripheral and Supplies Ltd.**  
244 Soi Pattanakarn 53, Pattanakarn, Suanluang,  
Bangkok 10250 Thailand

**Contact Us**

Tel : (66) 0-2322-9535, 0-2722-4040  
Fax : (66) 0-2322-7990  
E-Mail : [sales.dept@cps.co.th](mailto:sales.dept@cps.co.th)  
Web site : [www.cps.co.th](http://www.cps.co.th), [www.facebook.com/cps.co.th](http://www.facebook.com/cps.co.th)

**More Details**

Scan Here  
LINE ID  
Need more  
Information

