

RPP04

PORTABLE LABEL PRINTER

NFC



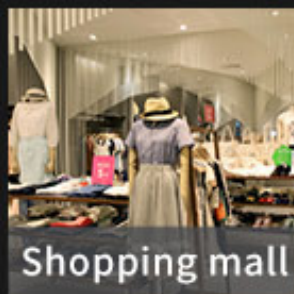
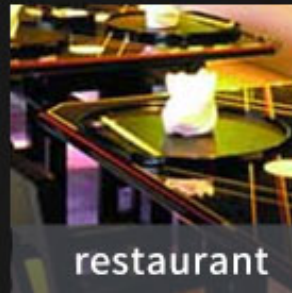
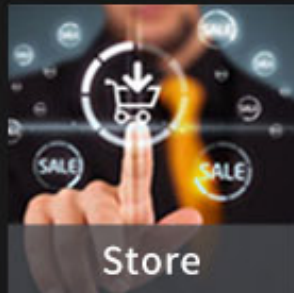
TECHNICAL PARAMETERS



Printing Method:	Direct thermal printing
Printing Width:	104mm
Resolution:	203dpi
Printing Speed:	90mm/s
Paper Width:	40~110mm
Paper Loading:	Easy paper loading
Printer Head:	≤50km
Storage:	FLASH: 4MB/RAM: 8MB
Battery Capacity:	7.4v, 2400mAh

PORTABLE LABEL PRINTER

A small ticket printer that can be carried with you. It has small size, clear print and many interfaces. Version optional, widely used in tobacco, postal, transportation, distribution and other industries.





RPP04 4inch Handheld Portable Label Printer Bluetooth

- 1. Supports various smart terminals, Printing, and NFC fast connection.
- 2. 1.2 meters drop resistance; Long-lasting battery life, can be used for a long time after chging.
- 3. Equipped with 0.91" OLED display and I ge-capacity paper bin.
- 4. Compatible with label pap, blackmarkpaper (lower black mark), continuous paper, and supports RT Elabel APP wireless connection printing.



Product Features

Product Parameters

Handheld Android Portable Label Printer

- 1. Supports various smart terminals, PDA printing, and NFC fast connection.
Support a variety of smart terminals, PDA printing, to achieve seamless connection and data transmission between devices, quickly complete the device pairing and data sharing, greatly enhancing the work efficiency and ease of use.
- 2. 1.2 meters drop resistanc Long-lasting battery life, can be used for a long time after charging Outstanding anti-fall performance, can withstand a 1.2-meter drop impact; can be used for 48 hours before once charge, no need to charge repeatedly; adapt to more environments.
- 3. Equipped with 0.91"OLED display and large-capacity paper bin
Equipped with 0.91" OLED display, easy to switch print commands, portable settings, large-capacity paper bin compared to other portable printers can be loaded with more paper rolls, no need to change paper rolls frequently, greatly improving printing efficiency.
- 4. Compatible with label paper,black mark paper (lower black mark), continuous paper, and supports RT Elabel APP wireless connection printing
Provides users with more flexible and diverse printing options to meet printing needs in different fields and scenarios.
- 5. Application scenarios: logistics, retail, manufacturing, warehousing.

Project	Parameter
Print	Direct Thermal
	203dpi
	4"(104mm)
	1.97ips(50mm/s)
	9.84"(250mm)
sensor	Seam mark detection, black mark detection, paper shortage detection, cover opening detection, head temperature detection
medium	Label paper, black label paper (lower black label), continuous paper
	1.57"-4.33"(40-110mm)
	0.0023"-0.0071"(0.06mm~0.18mm)
	Φ2"(φ50mm(MAX))
Paper cutting method Paper cutter	Manual tearing
processor	32-bit ARM MCU
storage	8MB
	4MB
Function	Power button, setting button, feed button, paper bin cover opening button
	none
	Buzzer tone
	0.91"OLED screen
	Automatically identify paper and reprint when paper is out of stock
Communication interface	Bluetooth、 USB/Bluetooth、 USB、 WiFi (Type-C)
programming language	TSPL+ESC, CPCL+ESC
Built-in fonts	ASCII Font: 10x12, 14x20, 16x24, 24x32, 36x48, 14x19, 21x27, 14x25, 12x24
	Chinese: 24x24, 16x16 (optional)
Code Page	CP437, CP850, CP852, CP860, CP863, CP865, CP866, WPC1250, WPC1251, WPC1252, WPC1253, WPC1254

Barcode	Code39, Code39C, I125, Code93, ITF25, EAN128, Code128, Codabar, EAN-8, EAN8+2, EAN8+5, EAN -13, EAN13+2, EAN13+5, UPC-A, UPCA+2, UPCA+5, UPC-E, UPCE+2, UPCE+5MSIC, ITF14, EAN14, Code11
	QRCODE, PDF417
software	XP, Win7, Win8, Win10, Win11, Mac, IOS, Android
	Android, iOS, Windows
	APP
power supply	AC 100-240V, 50-60Hz
	DC 5V/2A
	7.4V 2400mAh
	3~5 hours (0~40°C)
	48H
Environmental parameters	Temperature: 32-104°F(0-40°C); Humidity: 20-90% (non-condensing)
	Temperature: 14-140°F(-10-60°C); Humidity: 5-95% (non-condensing)
Physical parameters	1.2m
	NA
	133×149×60mm
	614g (without paper roll)
Accessories	Power adapter, USB data cable, quick installation guide, warranty card, battery, label paper
	Belt Buckles
standard	CCC, CE, FCC, SRRC

CDG | Computer Peripheral and Supplies Ltd.

Computer Peripheral and Supplies Ltd.

244 Soi Phatthanakan 53, Phatthanakan, Suanluang, Bangkok 10250 Thailand

Contact Us

Tel : (66) 0-2322-9535, 0-2722-4040

Fax : (66) 0-2322-7990

E-Mail : sales.dept@cps.co.th

Web site : www.cps.co.th, www.facebook.com/cps.co.th

More Details

Scan Here

LINE ID

Need more Information

