



Create YOUR OWN
Choose 4 toppings

SAUCE
CHEESE
TOMATOS
PEPPERONI



BAGELS

CHICKEN PESTO
delore ut cupidat

EGGS AND CHEESE
mollit aute nostrud

TUNA AND ONION
cupidat addelet



DRINKS

FRESH JUICE
12 oz \$0.00 | 20 oz \$0.00

WATER
12 oz \$0.00 | 20 oz \$0.00



COFFEE
Delicious



OPEN 5 DAYS A WEEK



GM50D Series
Digital Signage Solutions

Introducing the latest generation of Digital Signage Displays

Hisense Digital Signage is designed to serve multiple business applications: public spaces, transportation systems, museums, stadiums, retail stores, hotels, restaurants and corporate buildings. With the GM50D series, it delivers powerful engagement from any devices, boost business with real-time updates, data-driven insights and visually appealing content, manage and control devices at anytime from anywhere, and simplify the cable management by connecting a series of displays to a single video output.



GM50D Series - Highlights



Narrow Bezel

With a narrow bezel and symmetrical design, the display can be easily integrated into any environment. All terminals face outwards, ensuring the display hangs flush against the wall which saves space and facilitates installation.



Clean Cable Solution

The integrated cable holder hides cables and keeps the back of the display tidy and uncluttered. This reduces visual distractions that can get in the way of your viewing experience.



Wireless Screen Sharing

Everything you need for screen sharing solutions. Screen Cast is a in house built-in screen sharing application that enables the screen sharing wirelessly and seamlessly from anywhere and from any devices.



Build-in VisionInfo

VisionInfo is a cloud-based device management software that offers end-to-end device management and control through all devices. It is a powerful, effective and easy to use tool to control your devices at anytime from anywhere.



Android 11

Android 11 works to keep your data safe and secure. With Android 11, you have more control over what information apps can and can't access. Devices that work better together, enhance your messaging, audio and multitasking experiences.



Anti-glare Coating

All GM50D Series displays offer higher haze panels that help reduce reflections without adversely affecting the image quality. Anti-glare coatings can also improve the perceived contrast of the display.



Smart Power

The backlight intensity can be controlled and pre-set by the system to reduce the power consumption, ENERGY STAR-certified, the display helps you protect the environment and save costs.



Conformal Coating

Electronic components are completely protected from the environmental factors like moisture, dust, salt, chemicals, temperature changes and mechanical abrasion.





4K UHD

Delivers superior resolution that allows more details to be displayed on an image. The materials, the textures, the skin texture and the backgrounds: everything is richer and more realistic. 4K UHD provides four times the resolution of Full HD (1080p), with a resolution of 3840 x 2160 pixels. This higher pixel density results in sharper and more detailed images and videos, which can significantly enhance the viewing experience.

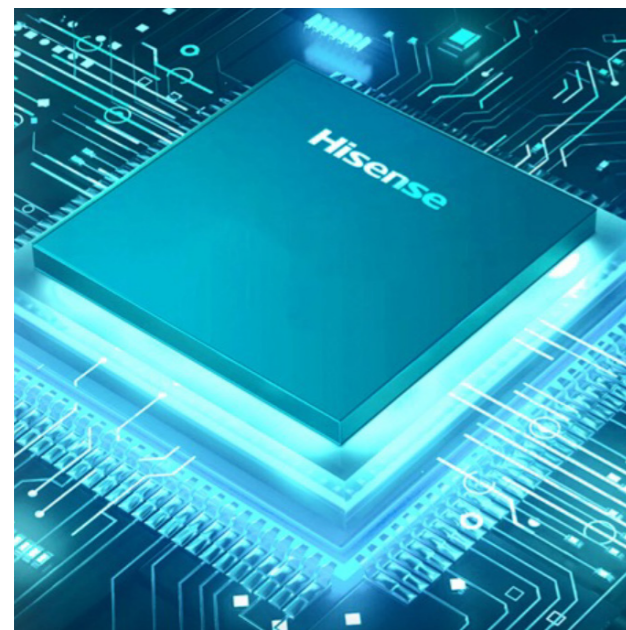
Anti Glare Coating

All the GM50D Series Offers higher haze panel that helps with reflections without notably affecting the image quality.

By reducing glare, anti-glare coatings enhance the visibility of the display's content. This is crucial for digital signage, as it ensures that passersby and viewers can clearly see and read the information, advertisements, or messages being displayed. Improved visibility can lead to better communication and engagement.

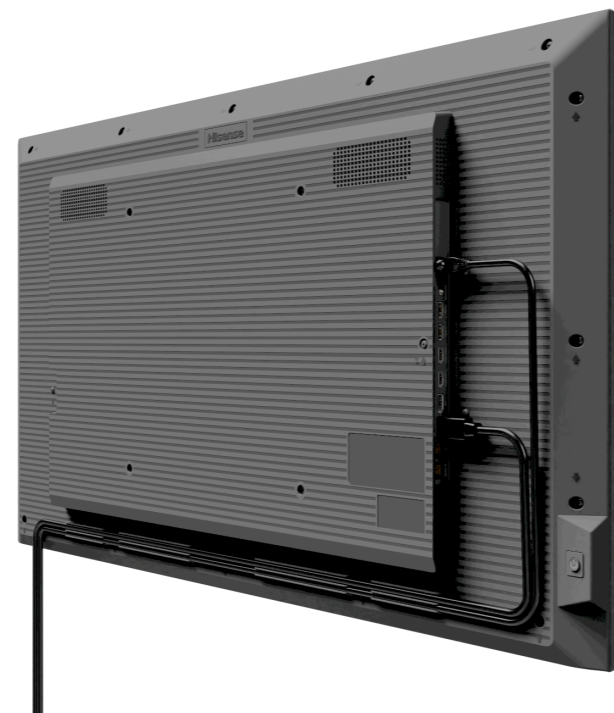
High Brightness

In outdoor settings or indoor environments with lots of ambient light, such as shopping malls, airports, or storefronts with large windows, high-brightness displays are essential. The GM50D Series displays deliver 500 nits brightness so they can overcome the challenges posed by direct sunlight or strong indoor lighting, ensuring that the content remains visible and legible even in bright conditions.



Android 11 - A Safer and Enhanced Experience

Android 11 works to keep your data safe and secure. With Android 11, you have more control over what information apps can and can't access. Devices that work better together, enhance your messaging, audio and multitasking experiences.



Clean Cable Solutions

The integrated cable holder hides cables and keeps the back of the display tidy and uncluttered. This reduces visual distractions that can get in the way of your viewing experience.



Narrow Bezel

The narrow bezel on the GM50D series digital signage display enhances the visual appeal, functionality, and effectiveness of the display in commercial applications. It allows for more seamless content presentation, improved aesthetics, and greater flexibility in designing engaging displays.

For presentations, conferences, or digital signage setups that require multiple screens, a narrow bezel ensures that the transition between different screens is seamless. It helps maintain the continuity of content across multiple displays, making it easier for viewers to follow presentations or messages.



Wireless Screen Sharing with Quad Split Screen

With Hisense GM50D series, you can eliminate the need for physical cables, adapters, and complex setup processes. Users can quickly and easily connect their devices (such as laptops, smartphones, or tablets) to the GM50D series digital signage displays without dealing with cable management, making it a user-friendly option.

Software casting support quad split screen enhancing the usability and versatility our signage displays, making them more interactive, engaging and convenient for both presenters and viewers.





The Complete Solution

1

Intelligent Content Management

Effortlessly manage, customize and deliver your message with our intuitive CMS platform. Streamline content creation and engage your audience with our powerful, user-friendly platform.



Content Creation



Dynamic Scheduling



Content Publishing

2

Enterprise-Grade Device Management

Empower your business with remote monitoring and control of displays on an installation. Safeguard your digital content with the robust security features of VisionInfo. Protect your displays and marketing content from cyber threats, ensure data privacy, and enjoy total peace of mind.



Remote Monitoring



Complete Control



Error Notifications

3

Enhanced Data Management

Unlock the power of data with our advanced analytics and reporting feature within VisionInfo. Gain valuable insights, make data-driven decisions, and maximize the performance of your content.



Routine Automation



Data Analysis

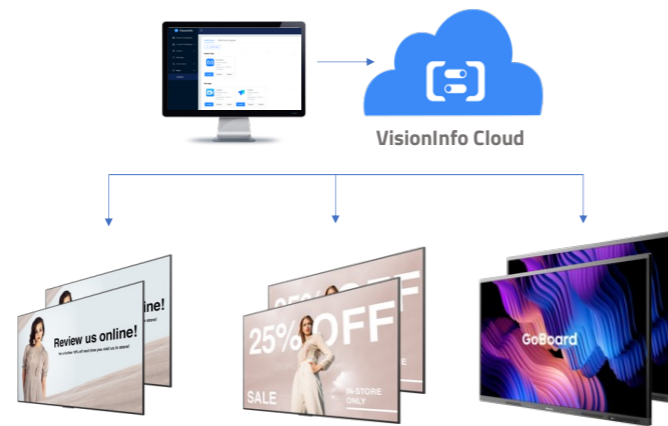


Visual Reporting

Why Choose VisionInfo for the GM50D Series

Flexible and Scalable Solutions

VisionInfo from Hisense is our cloud-based digital signage software which is flexible, cost-effective, and infinitely scalable for users. VisionInfo includes a comprehensive CMS solution and advanced remote display management features. It provides users the freedom to edit and publish content while ensuring it looks great across all displays in a system. It is a powerful, effective and easy to use tool to manage content and control your displays at anytime from anywhere.



Key Features

- Web browser editor UI
- Drag-and-drop visual editor
- Supports website integration
- Supports live streams
- Supports Office documents and PDF's
- Supports Widgets
- 4K resolution playback
- Offline content playback
- Program preview and publish approval
- Advanced program scheduler
- Custom template layouts
- Playback statistics



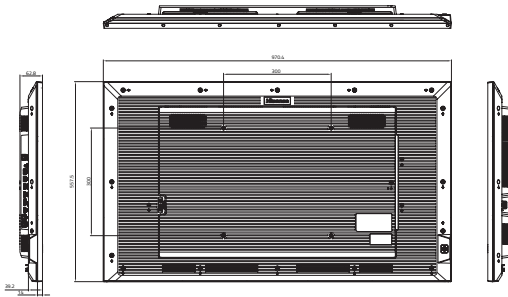
Mobile Device Management

- View the status of remote displays - online/offline, CPU and memory running status
- Real-time display control - power off, screen sleep/wake up, reboot, switch signal source, screen lock/unlock, USB disable/enable
- Remote desktop real-time monitoring
- Scheduled tasks to control displays - power On/off, screen sleep/wake up
- Remote software management - APP installation and uninstallation, remote OS Upgrade
- Display usage statistics

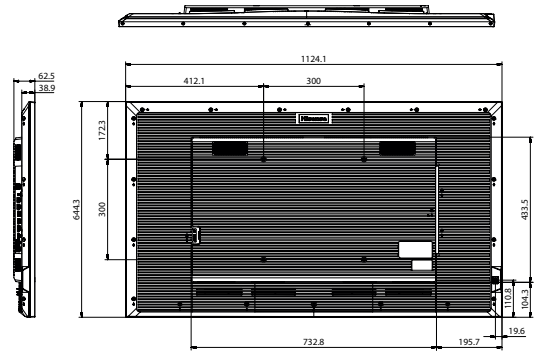


Dimensions

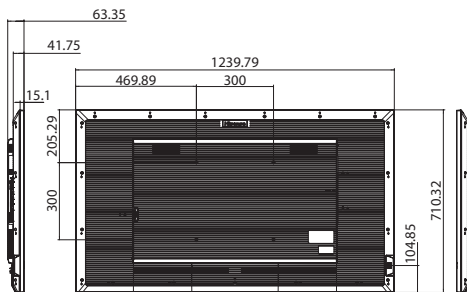
43" 970.4 x 557.5 x 62.8mm / 38.20 x 21.9 x 2.5inch
8.5kg / 18.7lbs



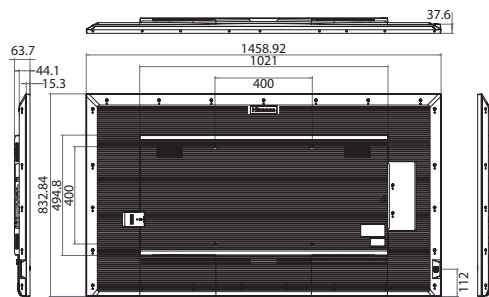
50" 1124.1 x 644.3 x 62.5mm / 44.26 x 25.36 x 2.46inch
11kg / 24.3lbs



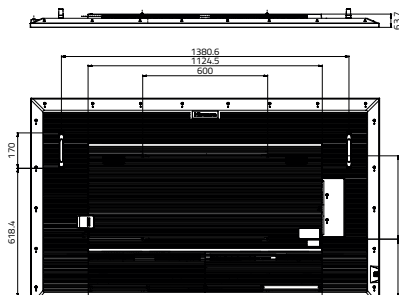
55" 1239.7 x 710.2 x 63.3mm / 48.8 x 28 x 2.5inch
13.9kg / 30.6lbs



65" 1458.9 x 832.8 x 63.7mm / 57.4 x 32.8 x 2.5inch
21.5kg / 47.4lbs



75" 1675.3 x 955.1 x 63.7mm / 66 x 37.6 x 2.5inch
29kg / 63.9lbs



86" 1926.6 x 1095.5 x 64.2mm / 75.9 x 43.1 x 2.5inch
38.2kg / 84.2lbs

