

POWERSHRED® LX220



Small Office/Home Office Shredder



100% Jam Proof™

Automatically detects and powers through tough jobs so you don't have to



SafeSense®

Protective halo automatically monitors and prevents shredding when hands or paws touch the paper entry



Efficiency Meter

Real-time feedback indicates the potential for increased sheet capacity for maximum efficiency



Bin Full Indicator

Notifies you when the bin is nearly full and alerts you when it needs to be emptied



Run Time Indicator

Alerts you when the shredder has nearly maximized run time and when it needs a cool down



Specifications:

Model No.	LX220
Mfr. No.	5015501 (White) 5015401 (Black)
Sheet Capacity	20 Sheets
Cut Type	Micro-Cut
Security Level	P-4
Cut Size	5/32" x 1/2"
Usage	Personal
Run Time (min)	30 on / 15 off
Bin Capacity	8 Gallons
Bin Type	Pull-Out
Throat Width	9"
Dimensions	23.25" H x 16.5" W x 11.75" D
Also Shreds	
Warranty	2-year product and 7-year cutter

CDG | Computer Peripheral and Supplies Ltd.

Computer Peripheral and Supplies Ltd.

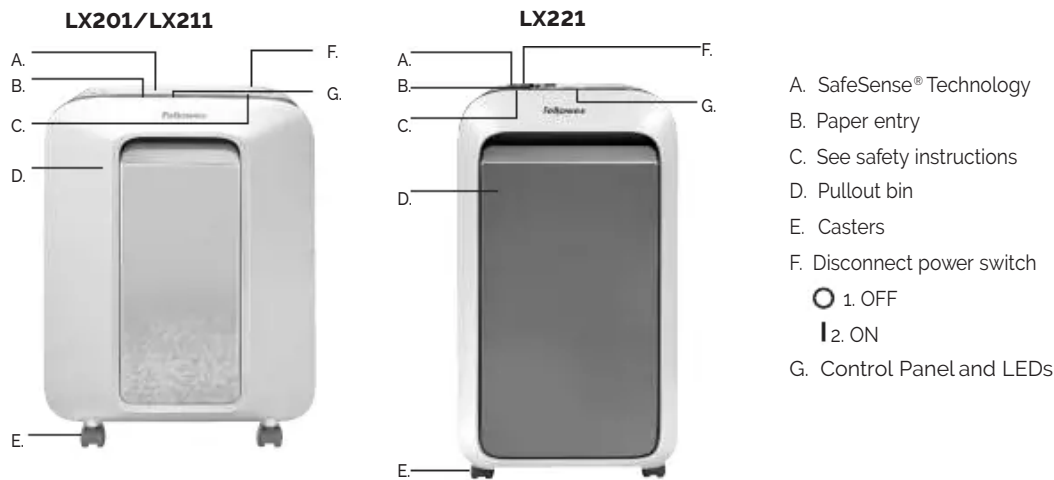
244 Soi Pattanakarn 53, Pattanakarn, Suanluang, Bangkok 10250 Thailand

Contact Us

- : facebook.com/cps.co.th
- : Tel. 02-7224040 Ext.9
- : sales.dept@cps.co.th
- : www.cps.co.th

More Details





CAPABILITIES

Will shred: Paper, credit cards, staples and paper clips

Will not shred: Adhesive labels, continuous form paper, transparencies, newspaper, cardboard, CD/DVDs, laminates, file folders, X-rays or plastic other than noted above








Paper shred size: Micro-Cut, 2mm x 12mm

Maximum Sheets per pass:
LX201 - 12*, LX211 - 15*, LX221 - 20*

Maximum Paper entry width: 230mm

* A4 (70g), paper at 220V-240V, 50/60 Hz, 2.5 Amps (LX201), 3.0 Amps (LX211), 3.8 Amps (LX221); heavier paper, humidity or other than rated voltage may reduce capacity. Maximum recommended daily usage rates: 1000 sheets per day, 25 credit cards. Fellowes SafeSense® shredders are designed to be operated in home and office environments ranging between 50 – 80 degrees Fahrenheit (10 – 26 degrees Celsius) and 40 – 80% relative humidity.

WARNING! IMPORTANT SAFETY INSTRUCTIONS – Read before using!

-  • Operation, maintenance, and service requirements are covered in the instruction manual. Read the entire instruction manual before operating shredders.
-   • Keep away from children and pets. Keep hands away from paper entry. Always set to off or unplug when not in use.
-   • Keep foreign objects – gloves, jewelry, clothing, hair, etc. – away from shredder openings. If object enters top opening, switch to Reverse (◀) to back out object.
-  • DO NOT use aerosol products, petroleum based or aerosol lubricants on or near shredder. DO NOT USE "CANNED AIR" OR "AIR DUSTERS" ON SHREDDER. Vapors from propellants and petroleum based lubricants may combust causing serious injury.
-  • Do not use if damaged or defective. Do not disassemble shredder. Do not place near or over heat source or water.
- This shredder has a Disconnect Power Switch (F) that must be in the ON (I) position to operate shredder. In case of emergency, move switch to OFF (O) position. This action will stop shredder immediately.
- Avoid touching exposed cutting blades under shredder head.
- Shredder must be plugged into a properly grounded wall outlet or socket of the voltage and amperage designated on the label. The grounded outlet or socket must be installed near the equipment and easily accessible. Energy converters, transformers, or extension cords should not be used with this product.
- FIRE HAZARD – Do NOT shred greeting cards with sound chips or batteries.
- For indoor use only.
- Unplug shredder before cleaning or servicing.

BASIC SHREDDING OPERATION



LX201
Continuous operation. Up to 10-minutes maximum.
NOTE: Shredder runs briefly after each pass to clear entry. Continuous operation beyond 10-minutes will trigger 15-minute cool down period.

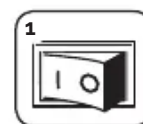


LX211
Continuous operation. Up to 20-minutes maximum.
NOTE: Shredder runs briefly after each pass to clear entry. Continuous operation beyond 20-minutes will trigger 15-minute cool down period.

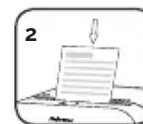


LX221
Continuous operation. Up to 20-minutes maximum.
NOTE: Shredder runs briefly after each pass to clear entry. Continuous operation beyond 20-minutes will trigger 15-minute cool down period.

PAPER OR CARD



Plug in and put disconnect power switch in ON (I) position



Align paper/card to center of paper entry. Feed straight into paper entry and release.