



# iData T2X Portable RFID Terminal

## All-in-one design to work in multiple scenarios

iData T2X is a 4G portable RFID terminal with high-speed and low-delay 4G WAN communication capabilities. It provides a better user experience in RFID reading performance and portability. It's portable to take with, and compatible with various RFID modules, such as LF, HF, UHF, covering almost all needs of RFID reading. Besides, iDataT2X can meet the requirements of different scenarios such as inventory, inspection, and asset management.

### RFID terminal as portable as a mobile phone

Only 315g in weight, the thickness is only 13.7mm, the shape is as portable as a mobile phone, and it can be easily put into the pocket. Workers can bring the equipment to any job site and start work immediately.

### RFID reading ability to meet all kinds of scenarios

The back RFID module support LF, UHF module, and the UHF rate can reach up to 200tags/s and a farthest reading range of up to 6m.

### 4G WWAN, outdoor network is faster

It supports 4G WWAN which features faster data transmission. When workers are conducting inspections and asset management outdoors, they can quickly load information without waiting.



Inbound and outbound Management



Production management



Fixed asset management



Public management

# T2X Technical Specifications

## System Configuration

Processor	Octa-core 2.0GHz high-performance processor
Operating System	Android 12.0 (GMS)
Memory (ROM+RAM)	64GB + 4GB (standard), 128GB+6GB(optional)
SIM	Two out of three SIM card slots, support dual SIM and dual standby * Two out of three SIM card slots: two cards can be held at the same time, Nano SIM card + Nano SIM card /Nano SIM card +TF card
Expansion Slot	Micro SD card (up to 256 GB)
Display Screen	6.21-inch, resolution: 1520*720 pixels
Touch Screen	Industrial capacitive screen, support wet-hand operation/glove mode/multi-touch/gesture operation
Camera	16 megapixels top camera, support auto-focus/PDAF; 5 megapixels front camera
Flashlight	800mA flashlight
Keypad	5 keypads in total: scan key *2, power key *1, volume key*2
Battery	3.85V lithium battery, with 4500mAh, embedded 3.85V lithium battery, with 4200mAh, detachable
Audio	Built-in microphone
Charging Method	Type-C and Pin-port charging, support 18W fast charging
Reminder	Vibration reminder/LED reminder/high power speaker/Audio reminder
Vibrating Motor	Built-in vibrating motor
Sensors	G-sensor/Proximity sensor/Light sensor/Geomagnetic sensor/Gyroscope
Intercom Function (optional)	Support one-button PTT calls

## Structure Parameter

Dimension (L*W*D)	168mm*79mm*13.7mm (Thickest 25mm)
Weight	315g (including the battery)

## Environmental Parameter

Working Temperature	-20°C - 60°C *Do not charge under low temperature conditions for the safety concerns
Storage Temperature	-40°C - 70°C (without battery)
Humidity	0 - 95% (no moisture condensation)
Drop Specification	Multiple drops to concrete floor from the height of 1.5m
Roller Drop Specification	1000 times of roller drops from a height of 0.5 meter
Ingress Protection	IP67
ESD Protection	±15KV (air discharge), ±8KV (contact discharge)

## NFC (Optional)

Working Frequency	13.56 MHz
Reading Distance	Within 60 mm
Communication Protocol	ISO14443A/14443B/15693

## Communication Interface

USB Interface	Type-C (with headset function) *1
OTG Interface	Support

## Scanning Engine

Barcode Type	It can scan one-dimensional / two-dimensional barcodes
Scanning Accuracy	≥3.33mil
Scanning Angle	Pitch: ±60° ; Skew : ±45° ; Tilt : 360°
View Angle	Horizontal : 44.3° , Vertical : 28.4° , Diagonal : 51°
Motion Error Tolerance	8m/s

## Communication Transmission

WWAN (Network Frequency)	China & Eurasian version: 2G : 900/1800 3G : WCDMA : B1/B8 4G : FDD-LTE : B1/B3/B7/B8/B20 , TDD-LTE : B34/B38/B40 American version: 2G: B2/B3/B5 3G: B1/B2/B4/B5 , CDMA&EVDO : BC0/BC1 (U.S.) 4G: B1/B2/B3/B4/B5/B7/B12/B17/B28A/B28B
WWAN (Data Service)	GSM/GPRS/EDGE/CDMA/UMTS/HSPA/HSPA+/EVDO/WCDMA/TD-SCDMA/TDD-LTE/FDD-LTE
WLAN Function	Wi-Fi 802.11a/b/g/n/ac/d/e/h/i/j/k/r/t/v/w (2.4G dual-band Wi-Fi), support fast roaming
Bluetooth	Bluetooth 5.0
GPS	GPS

## UHF & LF RFID (choose one of these two modules)

	UHF RFID	LF RFID
Communication Protocol	ISO18000-6C/EPC Class1 Gen2	EMID/FDX-B
Frequency	920MHz~925MHz/902MHz~928MHz/865MHz~868MHz	/
Output Power	0~25dbm(standard); 5~30dm(optional)	/
Antenna	Circularly polarized antenna	/
Reading Distance	0~25dbm, up to 3m (standard); 5~30dm, up to 5m (optional)	3~5cm

## Development Support

Programming Language	Java
Development API	iScan API (Scanning Development Kits), Device API (Device Management/Configuration Development Kits), Android Standard Interface
Development Tool	Eclipse/Android Studio

## Accessories (More details in accessories guide)

Standard Accessories	USB cable*1, power adapter*1, hand strap*1, device-back strap*1, battery*1
Optional Accessories	Single charging cradle, bottom charger, 4-slot charging cradle, 4-slot battery charging cradle, fanny pack, protective film, protective case

The information of iData products and software service may be subject to change without notice. Please contact your iData sales representative for the latest details.

**CDG** | Computer Peripheral and Supplies Ltd.

**Computer Peripheral and Supplies Ltd.**

244 Soi Pattanakarn 53, Pattanakarn, Suanluang, Bangkok 10250 Thailand

### Contact Us

Tel : (66) 0-2322-9535, 0-2722-4040

Fax : (66) 0-2322-7990

E-Mail : sales.dept@cps.co.th

Web site : www.cps.co.th, www.facebook.com/cps.co.th

### More Details

Scan Here  
[LINE ID](#)  
Need more  
Information



Each product comes with a pack of practical and cost-effective accessories

## USB Cable

Type-C to USB cable, 1m in length, support charging and data transmission



CHA-USBC-GNR

## Hand Strap

Wear on your wrist to carry the device, avoid accidental drops, and assure the safety of equipment



MNT-HS-GNR

## Device-back Strap

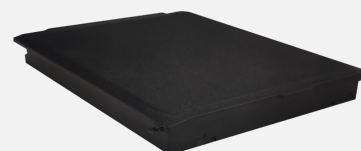
Attach on the device back to help you hold the device easily and firmly, avoid accidental drops



MNT-BS-T2

## Battery

4500mAh, detachable design.  
4200mAh, detachable design, support NFC  
ps: every product comes with 1 unit, you can purchase extra unit



CHA-BTRY-T2-4500MA

CHA-BTRY-T2-4200MA

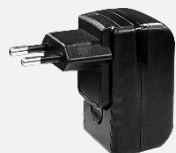
## Power Adapter

Input voltage 100-240V, output 5V2A. Support plug types of China/Europe/UK/US/Australia, match with CHA-USBC-GNR

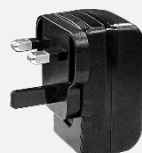
ps: you may have one of the power adapters



CHA-PWAD-GNR-5V2A-CN



CHA-PWAD-GNR-5V2A-EU



CHA-PWAD-GNR-5V2A-UK



CHA-PWAD-GNR-5V2A-US



CHA-PWAD-GNR-5V2A-AU

## Improve management efficiency of devices and operational level of enterprises

### Bottom Charger

Bottom charger for the main unit, support charging for 1 device. USB-A port, can connect with CHA-PWAD-GNR-5V2A-XX accessory



CHA-BTC-T2X

### Battery

4500mAh, detachable design.  
4200mAh, detachable design  
ps: every product comes with 1 unit, you can purchase extra unit



CHA-BTRY-T2X-4500MA

CHA-BTRY-T2X-4200MA

### Single Charging Cradle

Support charging for 1 main unit. Support plug types of China/Europe/UK/US/Australia  
ps: you may have one of the power adapters



CHA-CRD1S-T2

### 4-slot Charging Cradle

Constituted by 4 CHA-CRD1S-T2X, support maximum charging of 4 main units at the same time. Support plug types of China/Europe/UK/US/Australia  
ps: you may have one of the power adapters



CHA-CRD4S-T2

### 4-slot Battery Charging Cradle

Support maximum charging of 4 batteries at the same time. Support plug types of China/Europe/UK/US/Australia  
ps: you may have one of the power adapters



CHA-CRD4B-T2

### Improve device portability and comfort for users, boost working efficiency

#### Fanny Pack

Used to carry main units and other accessories. Can be tied to the waist or used as a crossbody bag

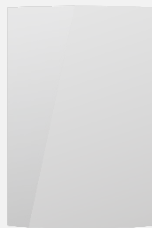


MNT-FP-GNR

### Lower risks of malfunction during usage, extend lifespan of devices

#### Protective Film

Protective film for touchscreen. It can protect the screen from cracking or being scratched in case there's any accidental drops or impact during usage



PRT-PTF-T2

#### Protective Case

Protective case for the main unit. It can prevent the malfunction of main unit in case there's any accidental drops or impact during usage



PRT-PTC-T2X

The information of iData products and software service may be subject to change without notice. Please contact your iData sales representative for the latest details.

**CDG** | Computer Peripheral  
and Supplies Ltd.

**Computer Peripheral and Supplies Ltd.**

244 Soi Pattanakarn 53, Pattanakarn, Suanluang,  
Bangkok 10250 Thailand

#### Contact Us

Tel : (66) 0-2322-9535, 0-2722-4040

Fax : (66) 0-2322-7990

E-Mail : sales.dept@cps.co.th

Web site : www.cps.co.th, www.facebook.com/cps.co.th

#### More Details

Scan Here  
**LINE ID**  
Need more  
Information

