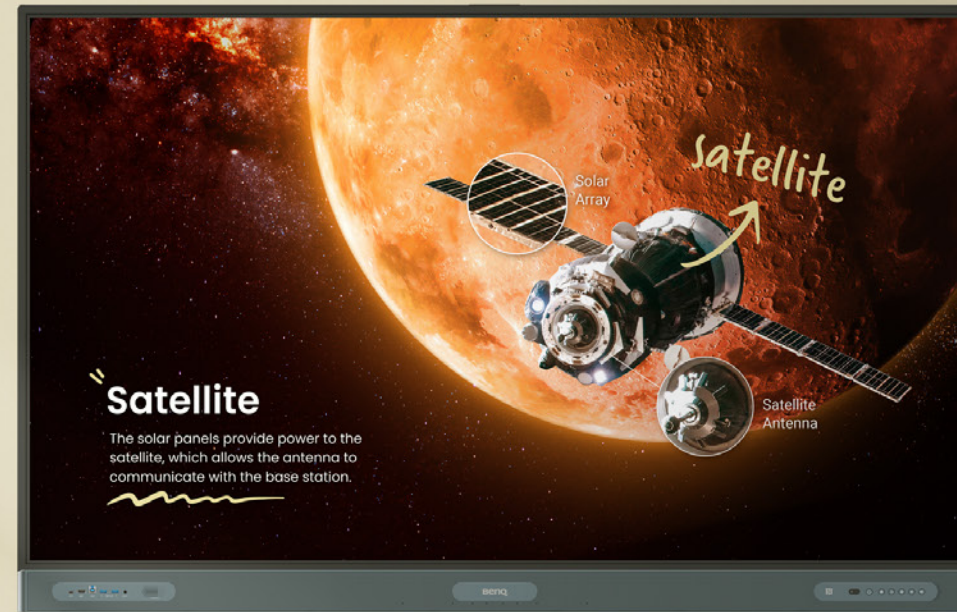


BenQ Board Pro

Teach in ways you never imagined

Discover new ways to give lessons and take your teaching to the next level with our most powerful board yet.



BenQ
Education

BenQ Board Pro
RP6504 / RP7504 / RP8604



EDLA



ClassroomCare®



NFC

A very Google experience

Streamlined teaching with Google

The new EDLA-certified BenQ Board Pro RP04 gives you the best possible classroom experience by combining the power of BenQ software and hardware with official Google services for education.



Google Play

Get access to your favorite education apps right on the BenQ Board.



Core services

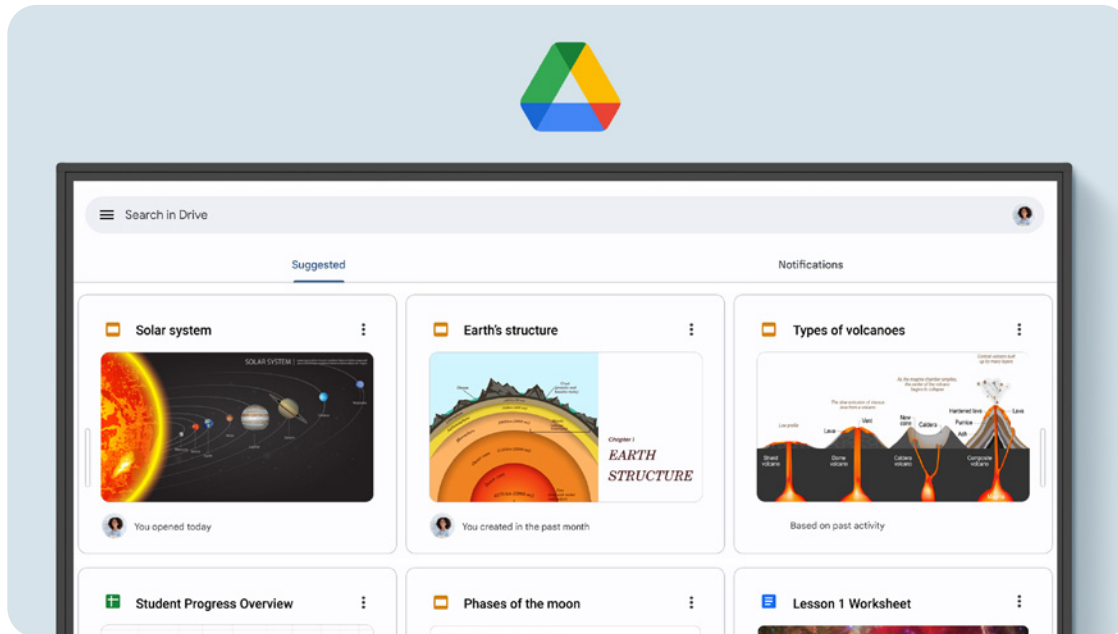
Google Core Services come preinstalled on the RP04.



Collaboration tools

Use any of the Google Docs Editors to open lesson files directly from your board.

A very Google experience



Access your files

With Google Drive on the board, you can conveniently open your cloud-based teaching materials and then save them back to your drive once class is done.



Experience enhanced security

Google Play Protect safeguards your displays and prevents you from installing potentially harmful apps and malware.

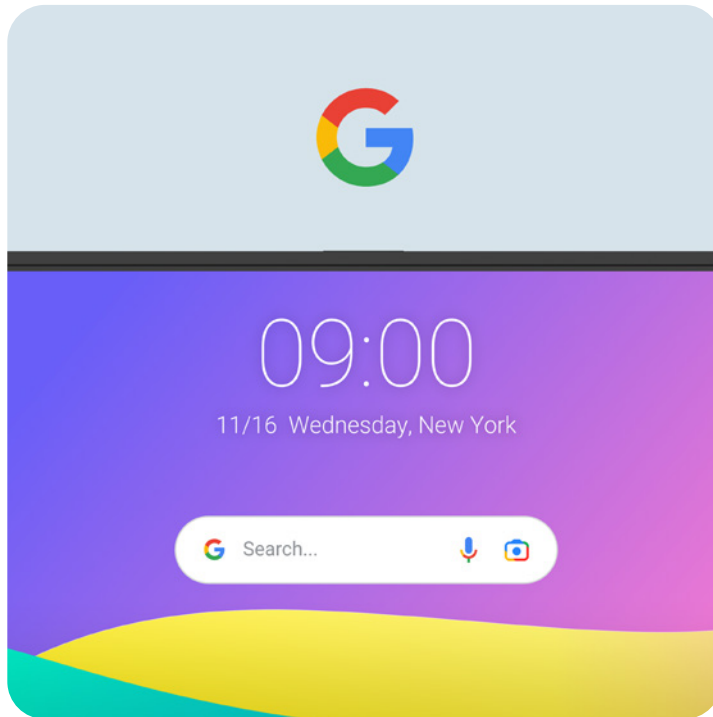
A very Google experience

Customize your space

Personalize your board's Home screen by adding new pages and pinning your most-used apps and files.



A very Google experience



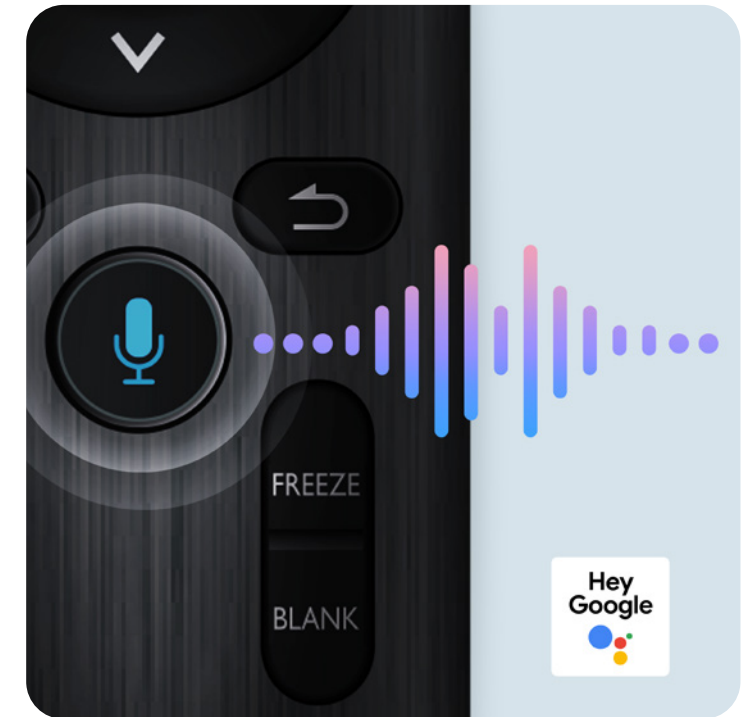
Search any time

Quickly look up information directly from the Home screen with Google Search.



Design your dashboard

Personalize your screen with handy widgets such as the timer, calendar, and sticky notes.

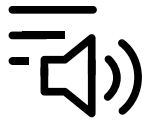


Hey Google...

Get a helping hand while teaching by speaking to Google Assistant from your remote.

A very Google experience

AI tools for accessibility and inclusivity



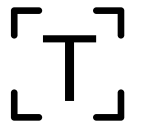
Text-to-speech

Have written text read aloud for everyone in class.



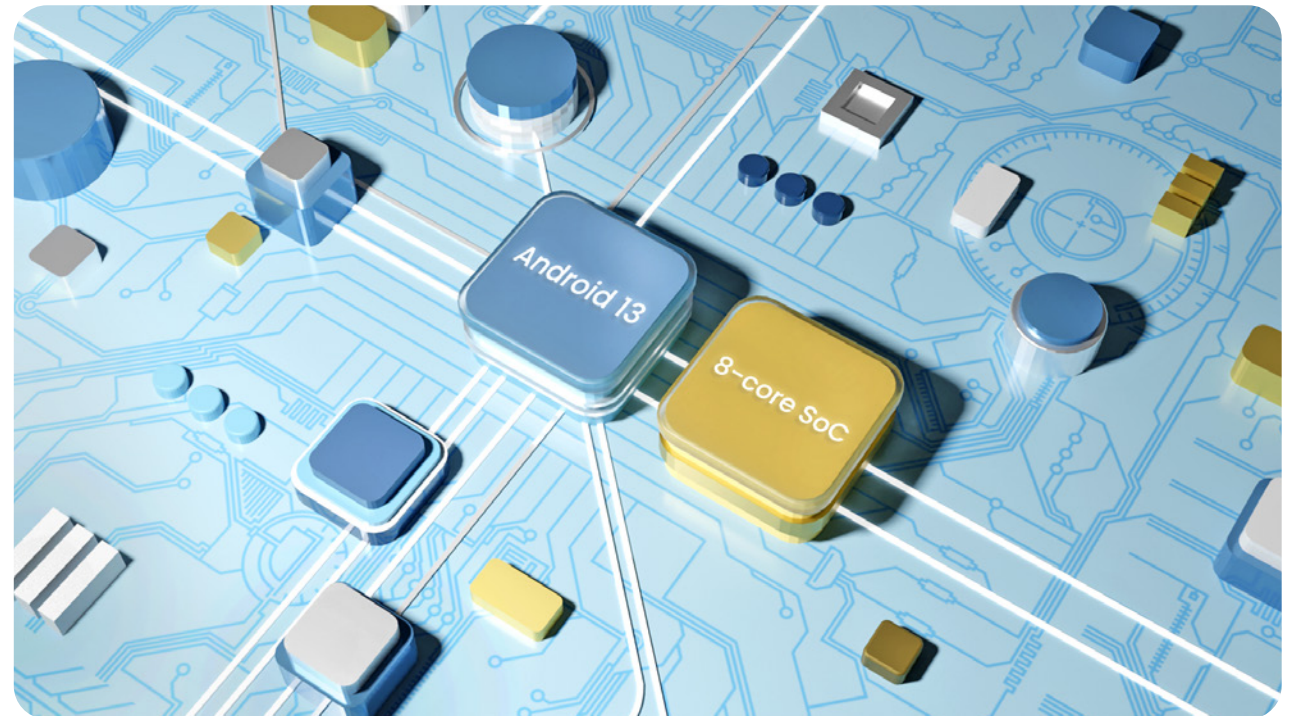
Multilingual translation

Translate resources to different languages and access a world of content.



OCR

Convert text from images and documents to an editable format.



Rely on efficient long-term performance

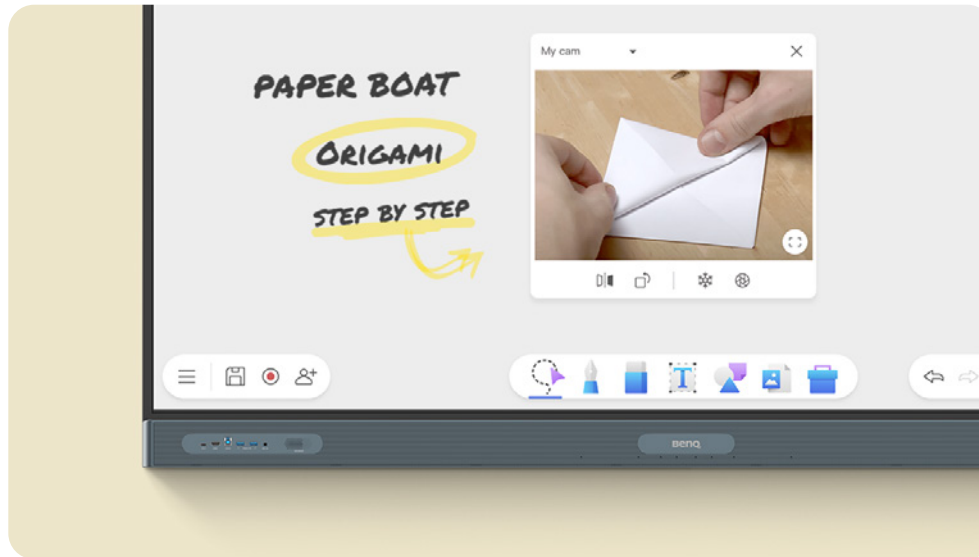
The RP04 runs Android 13 on an 8-core Pro chipset ensuring its futureproof use and consistently fast performance.

An unlimited canvas

EZWrite is a powerful whiteboard with a collection of tools designed for more engaging lessons. It lets students get their hands on the board whether you're teaching in person or online.

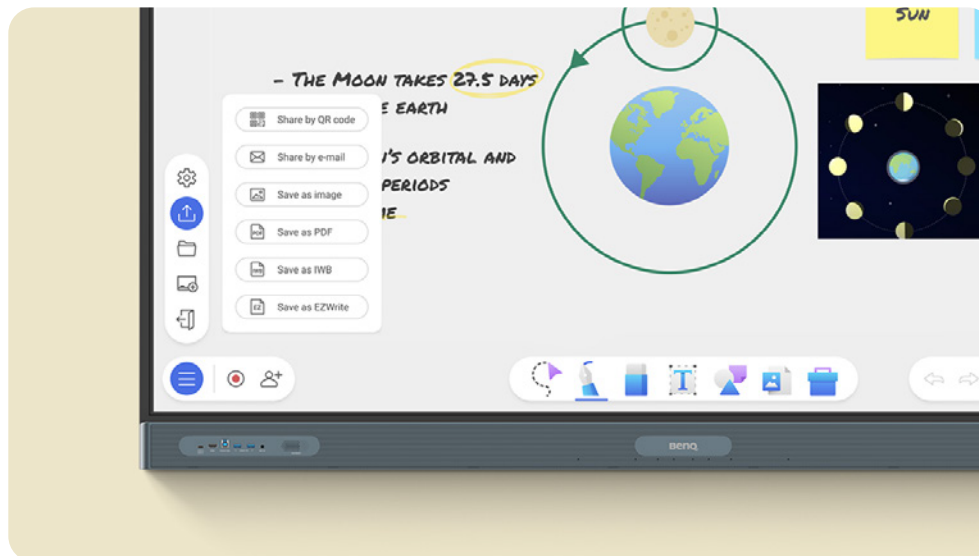


An unlimited canvas



No ordinary whiteboard

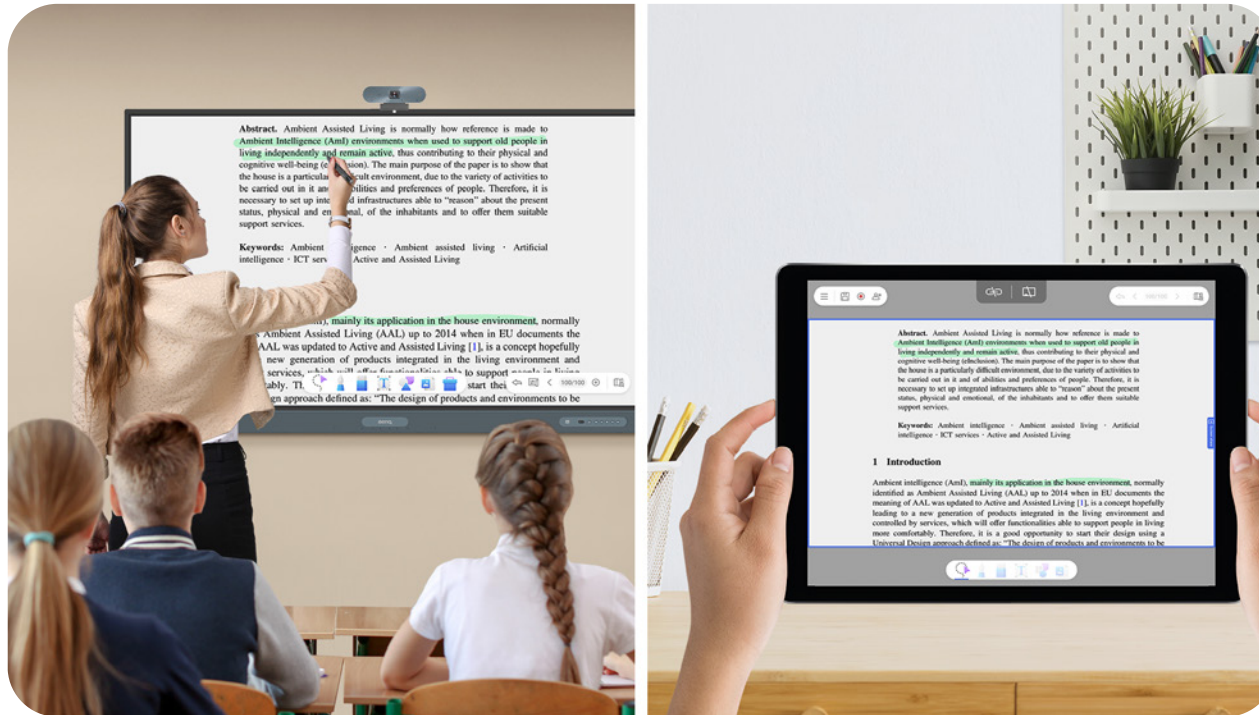
EZWrite 6 lets you do more than just write and draw. You can expand the size of your canvas, split it into sections, pull up templates and measuring tools, and even share your live camera feed.



Import. Edit. Share.

EZWrite supports Office files so you can import slideshows, documents, sheets, or PDFs and use them to teach. Add notes during class, and save your session as an editable IWB file or export it as a PDF handout for your students.

An unlimited canvas



Borderless classrooms

Activating cloud whiteboarding extends your session to remote students, wherever they may be. They can write and participate freely as if they were right in front of the board.

An ideal teaching environment

The RP04 comes out of the box with everything you need to give effective and engaging lessons.



An ideal teaching environment



Double your efficiency

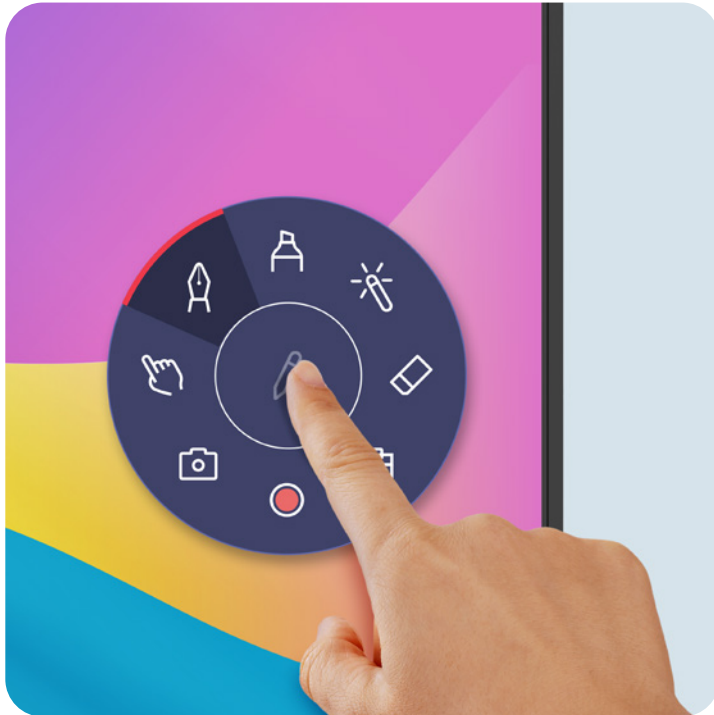
The split-screen mode lets you teach more efficiently as it allows you to use two apps side by side. You can whiteboard on the left while browsing other resources on the right.



Log in your way

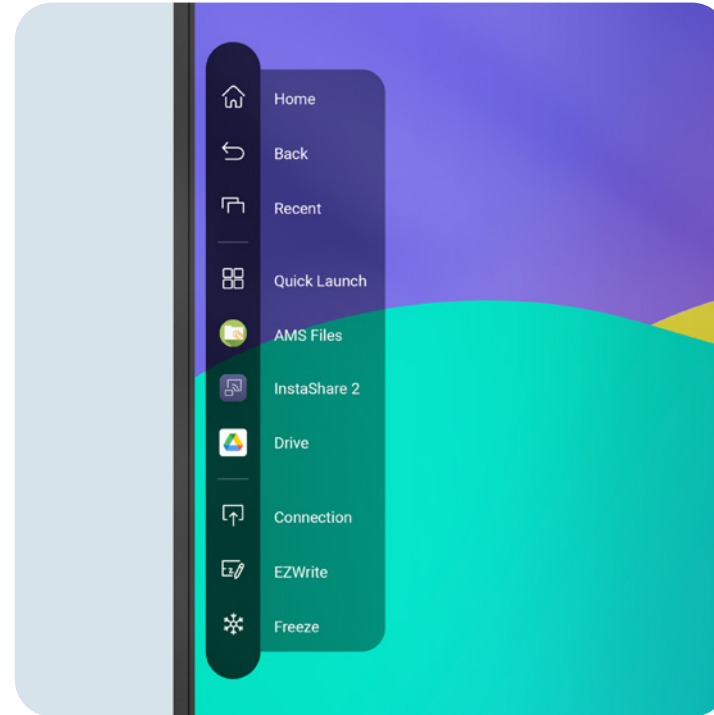
Save time by logging in to the RP04 with a simple tap of your NFC card or by scanning the QR code with your phone. Access your cloud storage and load personal settings on any BenQ Board Pro easily and securely.

An ideal teaching environment



Annotate anywhere

The built-in Floating Tool lets you write on top of any app, website, document, image, or content on the board or from connected devices.



Shortcuts on the side

Accessible with just a tap, the sidebar gives you quick access to the home screen, input sources, EZWrite, and all your most-used apps.



Convenient connectivity

The RP04 has multiple ports at the front for convenient connectivity. It also features a 100W USB-C port that lets you display screens, charge devices, and enable touch back.

An ideal teaching environment



AI-enhanced streaming and recording

Capture classes on high-quality video by plugging in the DV01K BenQ Board camera. Its AI features—such as auto framing, active noise cancellation, and face and voice tracking—ensure a clear and dynamic video feed that is ideal for streaming and recording.



AI-powered
auto framing



AI-powered
speaker tracking



Active noise
cancellation

An ideal teaching environment



Immersive sound

Experience unmatched audio with the board's two powerful 20-Watt front-facing speakers and 16-Watt subwoofer.



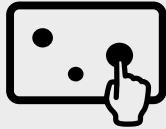
Clear audio pickup

The RP04's 8-microphone array with echo cancellation and noise reduction ensures that you're heard loud and clear.

An ideal teaching environment

A better writing experience

The BenQ Board Pro encourages students to work together by providing a wide interactive space that offers lag-free touch response and a natural writing experience.



Made for collaboration

The RP04 has up to 50 touch points, allowing multiple users to interact simultaneously.



Like writing on paper

Having no gap in between the glass and the panel ensures smoother writing.



Truly responsive touch

With Ultra Precision IR, you get more accurate writing and interaction with the screen.

An easier way to share

You don't need wires to present content. With InstaShare 2, teachers and students can wirelessly cast their laptop and tablet screens to the BenQ Board from wherever they are in the room.



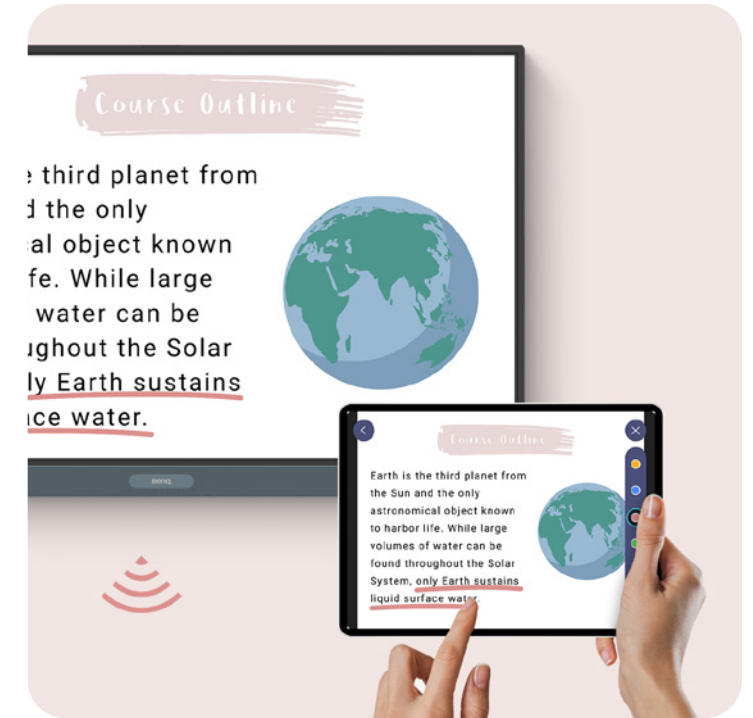
An easier way to share



Control devices from the board



Simultaneously share screens

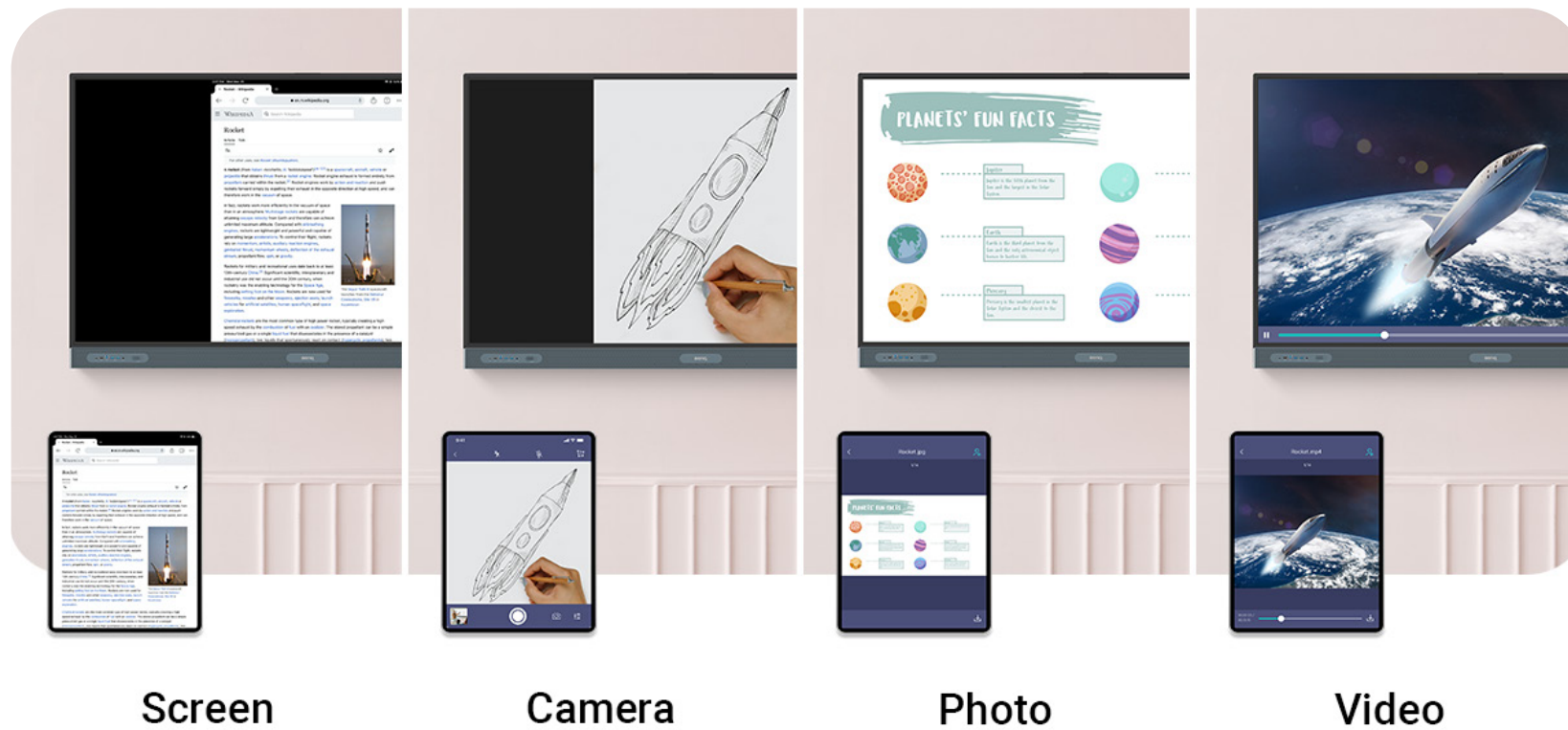


Cast your board to other screens

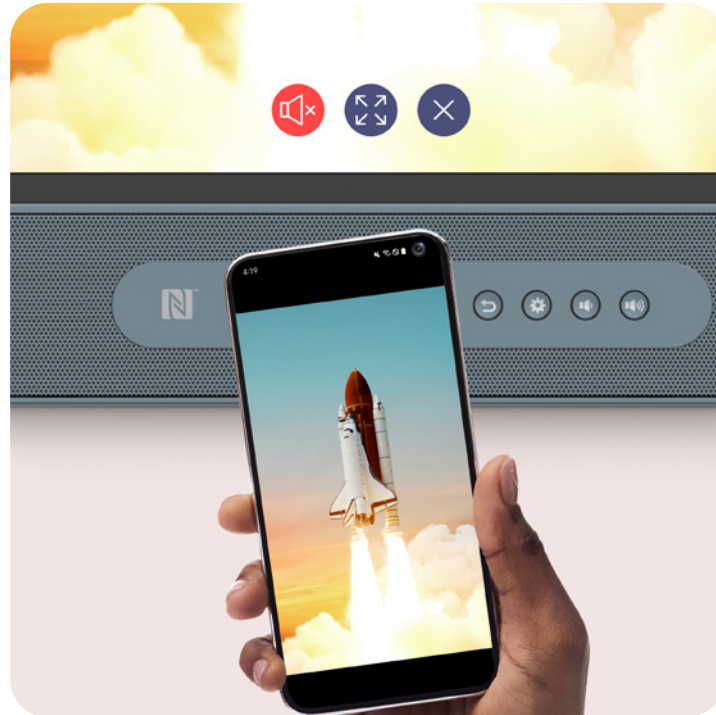
An easier way to share

Share different types of content

Make group presentations and whole-class discussions more engaging for everyone. Teachers and students alike can share photos, videos, or even their camera feed.



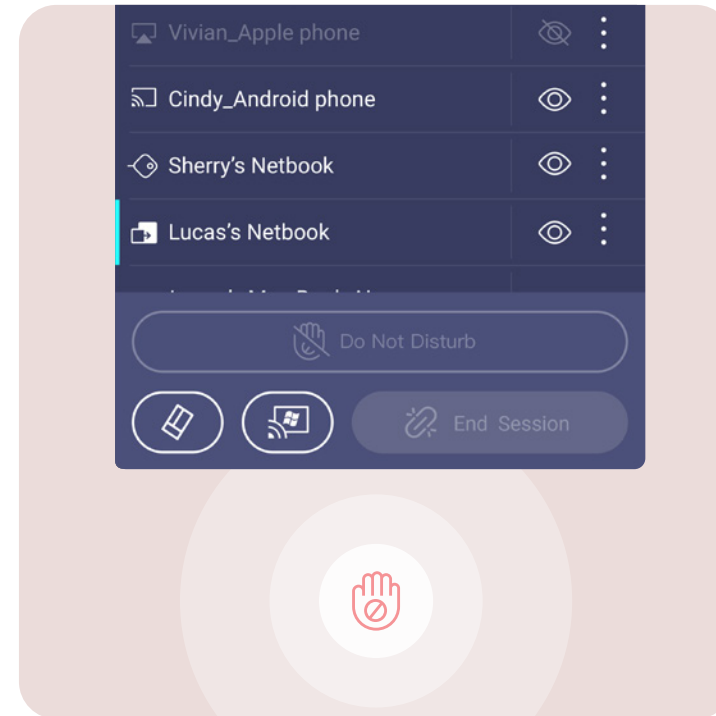
An easier way to share



Tap and share

Share your screen from your Android phone with a simple tap. Just place your phone on the board's NFC sensor and instantly start sharing.

*Available in Q1 2024.



Manage the session

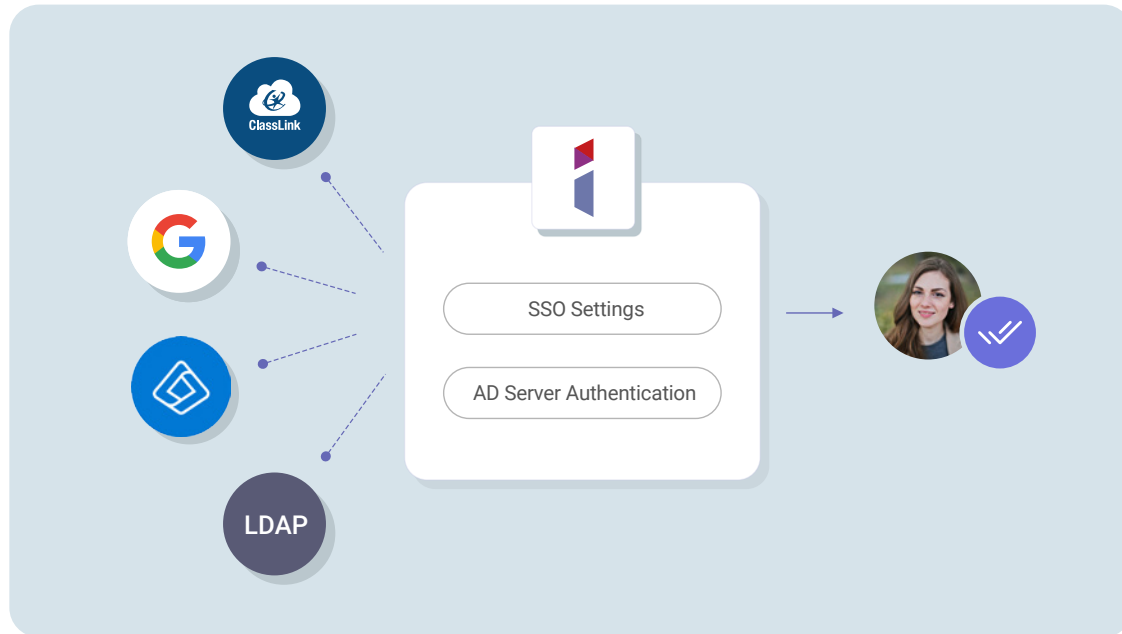
InstaShare 2 lets you select which screens to hide or share, instantly turn off screen sharing requests, and automatically block inappropriate content with AI.

Streamlined management

The BenQ ecosystem makes managing devices, apps, and user accounts simpler than ever to reduce the workload of IT and admin staff.

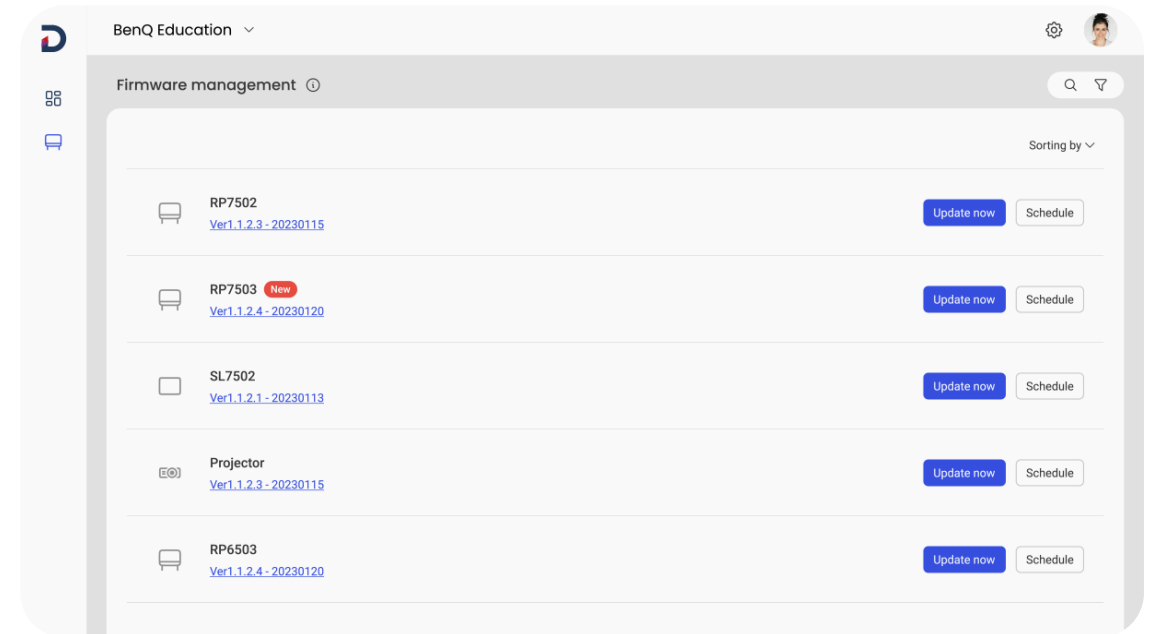


Streamlined management



Import and sync existing users

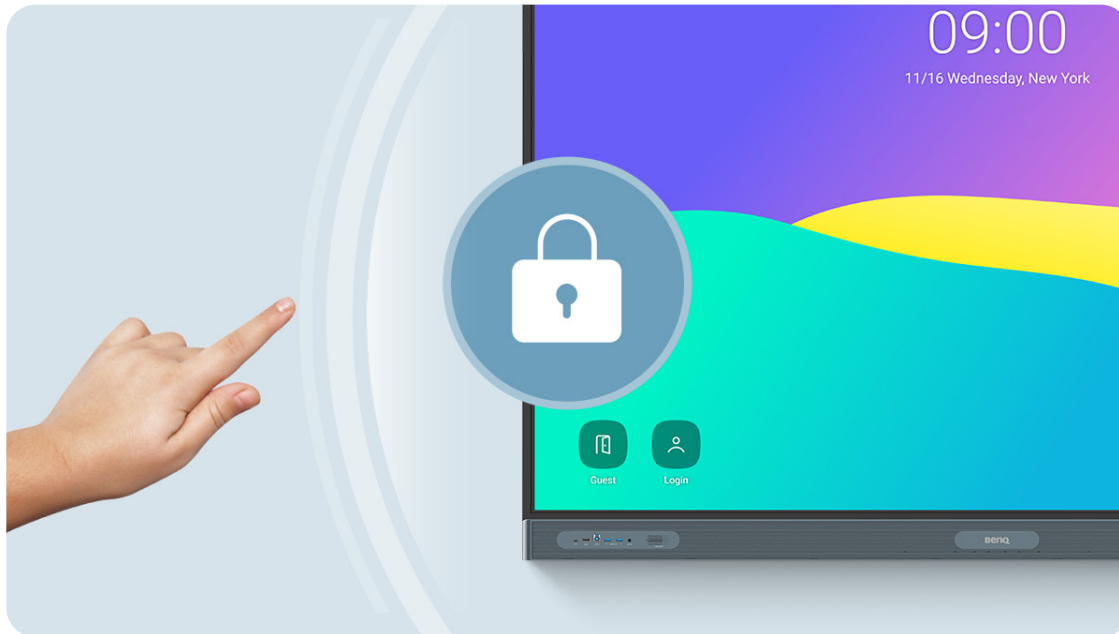
Streamline account management by importing users directly from Google Workspace, Microsoft Entra ID (formerly Azure Active Directory), ClassLink, LDAP servers, or other SAML-based identity providers.



Manage everything remotely

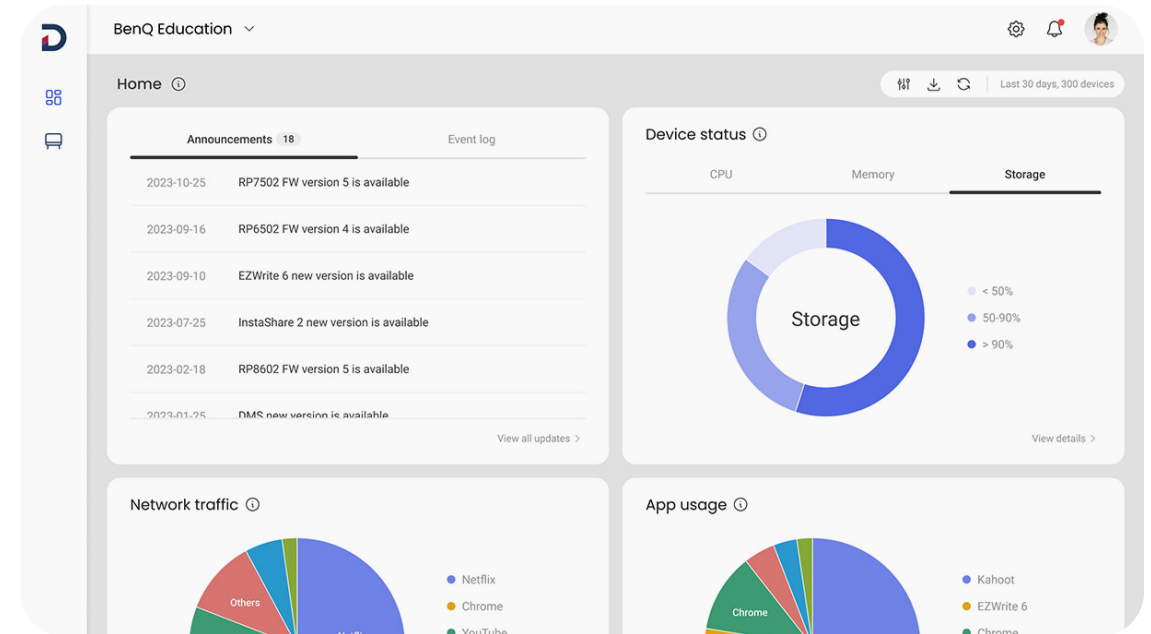
Since BenQ's management platforms are all cloud-based, admins can easily push firmware updates, install apps, and set policies for multiple BenQ Boards wherever they may be.

Streamlined management



Get better data security

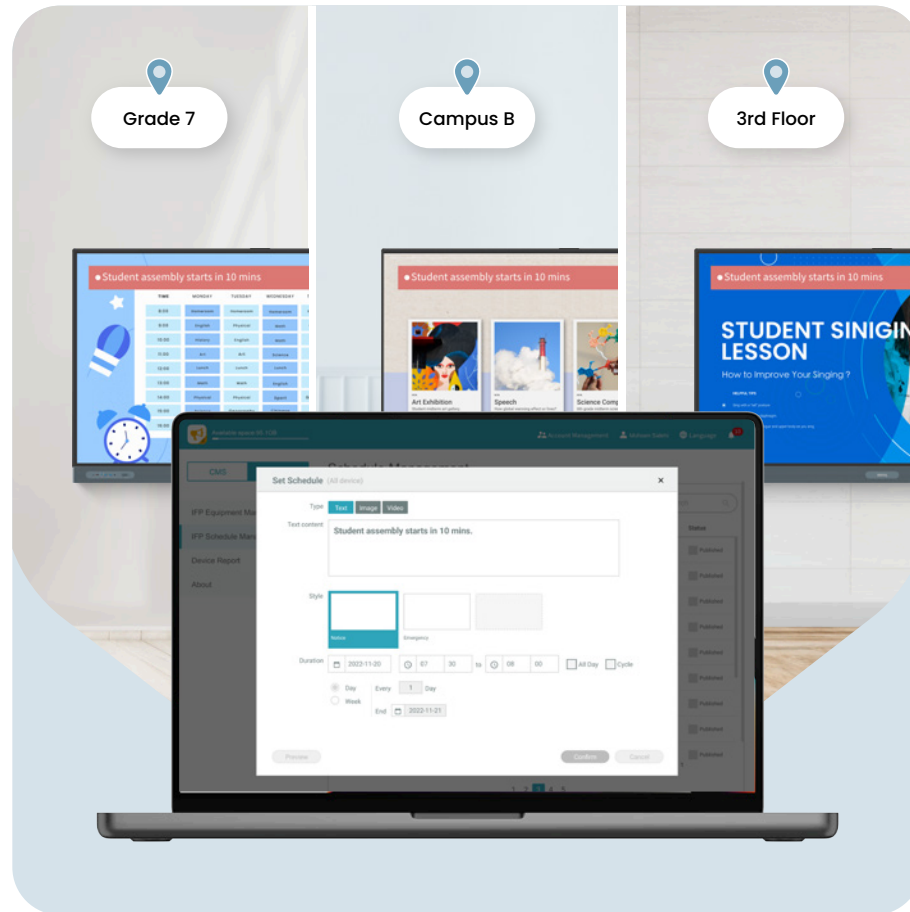
With single sign-on, MFA, authentication mode, and app scanning via Google Play Protect, the BenQ Board gives you extra layers of protection.



Receive detailed analytics

Get advanced analytics for BenQ Board operation and app usage. Generate more informative reports by selecting specific devices and data points.

Streamlined management



Communicate across campus

Send scheduled or real-time announcements for events and emergencies through multiple BenQ displays with X-Sign Broadcast.

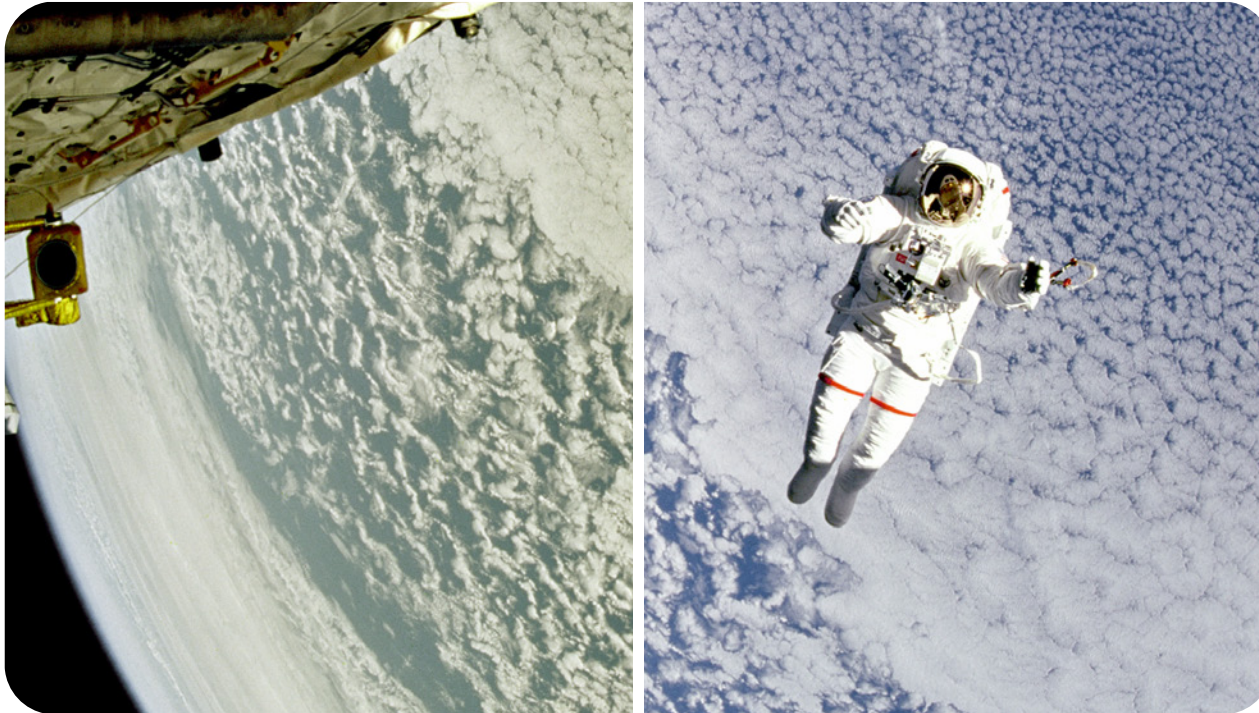


Designed for healthier classrooms

The BenQ Board Pro is equipped with the maximum level of ClassroomCare® protection so educators can teach with confidence while their students interact safely.



Designed for healthier classrooms



Only the best for your eyes

The RP04 is the first Eyesafe® Certified 2.0 smart board with an RPF®50 rating. It offers the highest level of protection available for the eyes. The display prevents eye strain by greatly reducing high-energy blue light while maintaining the screen's vivid colors.



Eyesafe®
Certified 2.0



TÜV-certified



Flicker-free



Anti-glare

Designed for healthier classrooms



Stop the spread of germs

Minimize surface transmission with germ-resistant technologies. The RP04's touchscreen, buttons, and front ports are made with a proprietary TÜV-certified formula that is 99.9% effective against common germs.



Extended protection

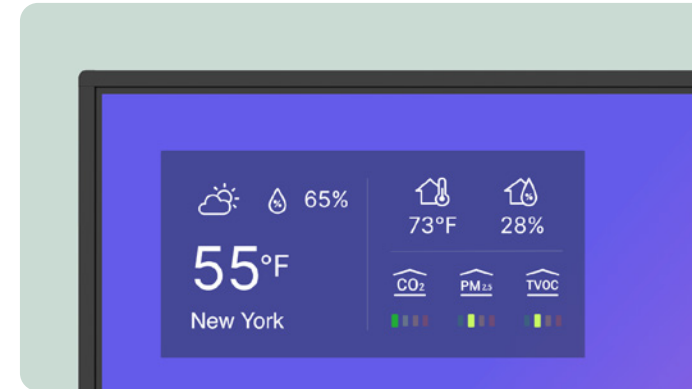
Shared surfaces can easily become vectors of germs in the classroom. The RP04's pens and remote control have been made germ-resistant for extended protection.

Designed for healthier classrooms



Protect indoor air quality

Poor indoor air quality negatively affects student health and performance. The BenQ Board Pro helps monitor CO₂, PM_{2.5}, and TVOC levels in the classroom so you can regulate air flow accordingly.



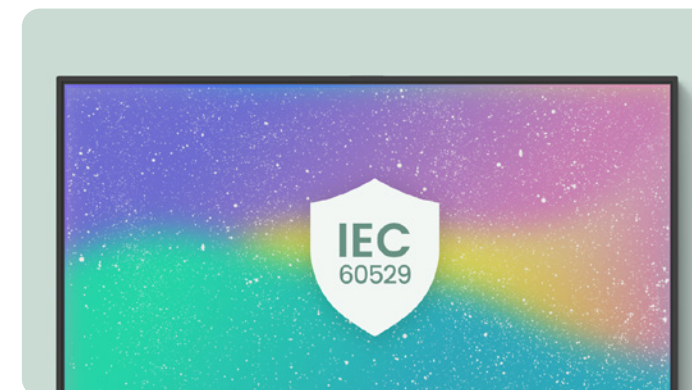
Air ionizer

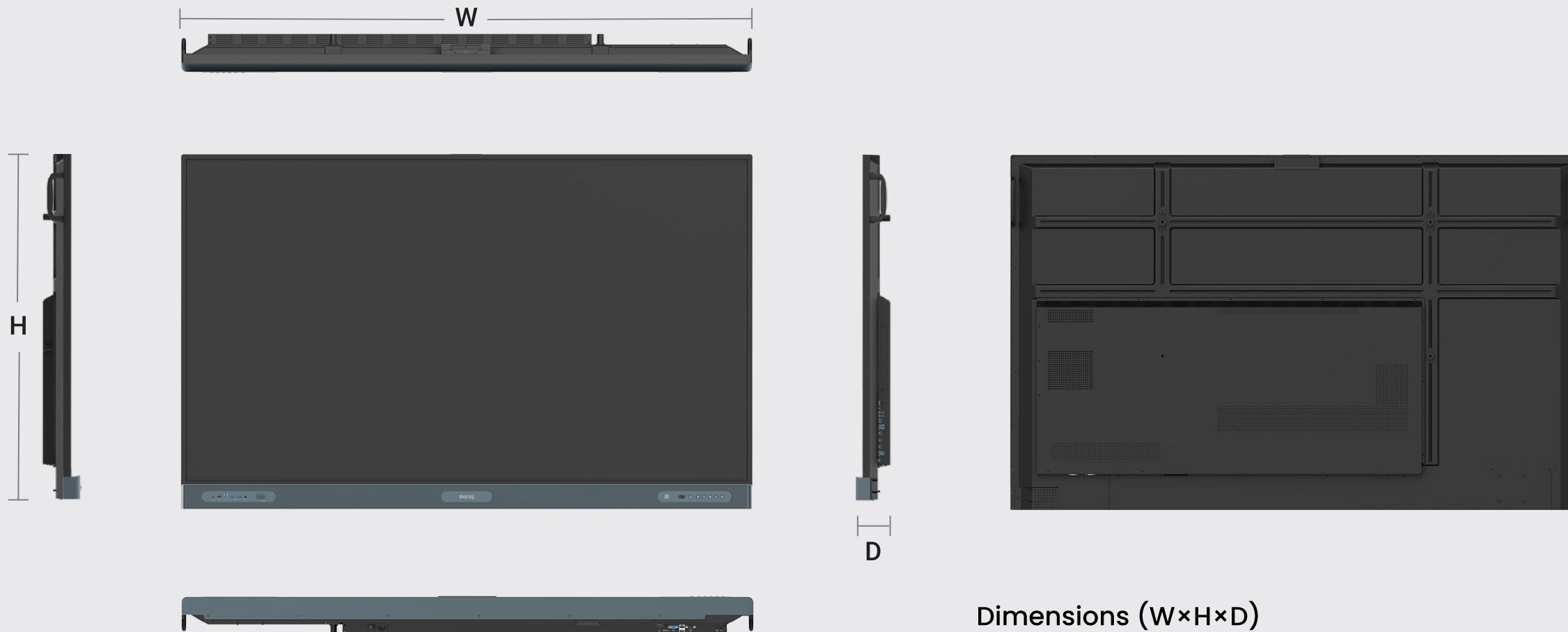
The BenQ Board Pro is the only smart board with an air ionizer that helps regulate impurities when pollutant levels rise.



IP5X dust protection

The RP04 panel complies with IEC standard 60529 to ensure consistent operation, even in dust-prone classroom environments.





Dimensions (W×H×D)

RP6504 | 1488.4 × 937.6 × 117.7 mm (58.6 × 36.9 × 4.6 in)

RP7504 | 1709.4 × 1060.8 × 117.7 mm (67.3 × 41.8 × 4.6 in)

RP8604 | 1957.0 × 1200.5 × 117.7 mm (77.0 × 47.3 × 4.6 in)





1. USB 3.0 Type-C
2. HDMI in
3. Touch USB
4. USB 3.0 Type-A
5. Microphone in
6. Air ionizer

7. 8-microphone array
8. Motion sensor
9. NFC sensor
10. Ambient light sensor
11. IR sensor
12. Power

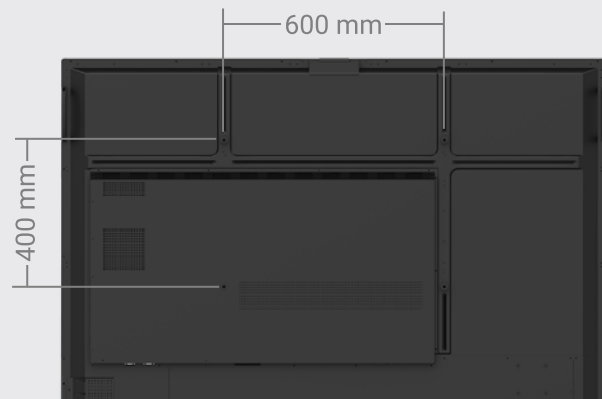
13. Home
14. Back
15. Menu
16. Volume down
17. Volume up

18. Earphone jack
19. USB 3.0 Type-C
20. USB 3.0 Type-A
21. HDMI out
22. Touch USB
23. HDMI in
24. Touch USB

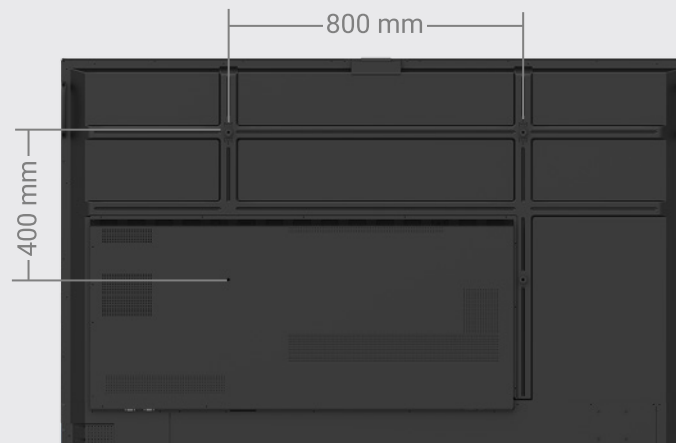
25. USB 2.0 Type-C
26. USB 3.0 Type-A
27. USB 2.0 Type-A
28. S/PDIF
29. RS-232
30. Ethernet

31. VGA
32. Audio in (VGA)
33. DisplayPort in
34. USB 3.0 Type-C
35. USB 3.0 Type-A
36. OPS slot

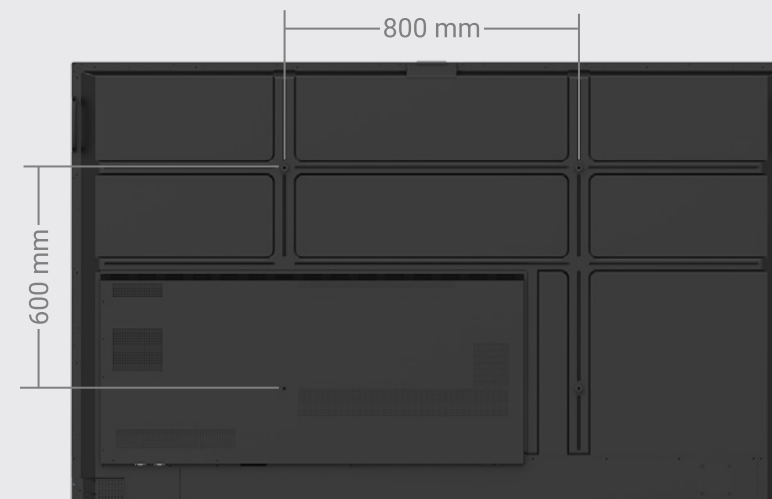




RP6504



RP7504



RP8604

Size	VESA specification	Screw type	Quantity
65"	600 × 400 mm	M8 × 25L	4
75"	800 × 400 mm	M8 × 25L	4
86"	800 × 600 mm	M8 × 25L	4



Model	RP6504	RP7504	RP8604
Panel			
Screen size	65"	75"	86"
Panel type	IPS	IPS	IPS
Resolution	UHD 3840 × 2160 pixels	UHD 3840 × 2160 pixels	UHD 3840 × 2160 pixels
Active area	1428.5 × 803.5 mm	1649.7 × 927.9 mm	1895.0 × 1066.0 mm
Aspect ratio	16:9	16:9	16:9
Panel brightness (typical)	450 nits	450 nits	450 nits
Contrast ratio (typical)	1200:1	1200:1	1200:1
Dynamic contrast ratio	50,000:1	50,000:1	50,000:1
Color depth	10-bit	10-bit	10-bit
Response time	8 ms	8 ms	8 ms
Color gamut	72% NTSC	72% NTSC	72% NTSC
Backlight life (typical)	50,000 hrs	50,000 hrs	50,000 hrs
Orientation	Landscape	Landscape	Landscape
Glass			
Hardness	9H tempered	9H tempered	9H tempered
Germ-resistant technology	Nano-ionic silver	Nano-ionic silver	Nano-ionic silver
Anti-glare	Yes	Yes	Yes
Touch screen			
Touch technology	Ultra Precision IR	Ultra Precision IR	Ultra Precision IR
Touch points	up to 50	up to 50	up to 50
Touch response time	< 8 ms	< 8 ms	< 8 ms
System			
CPU	Arm Cortex-A78 × 4 + A55 × 4	Arm Cortex-A78 × 4 + A55 × 4	Arm Cortex-A78 × 4 + A55 × 4
GPU	Arm Mali-G57 MC5	Arm Mali-G57 MC5	Arm Mali-G57 MC5
Memory Storage	8GB 64GB	8GB 64GB	8GB 64GB
Operating system	Android 13 (EDLA)	Android 13 (EDLA)	Android 13 (EDLA)



Model	RP6504	RP7504	RP8604
Connectivity			
USB-C	1 × 3.0 (PD 100 W), 2 × 3.0, 1 × 2.0 (PD 65 W)	1 × 3.0 (PD 100 W), 2 × 3.0, 1 × 2.0 (PD 65 W)	1 × 3.0 (PD 100 W), 2 × 3.0, 1 × 2.0 (PD 65 W)
USB Type-B (for touch)	3 × 3.0	3 × 3.0	3 × 3.0
USB Type-A	7 × 3.0, 1 × 2.0	7 × 3.0, 1 × 2.0	7 × 3.0, 1 × 2.0
HDMI (in out)	4 × HDMI 2.0 1 × HDMI 2.0	4 × HDMI 2.0 1 × HDMI 2.0	4 × HDMI 2.0 1 × HDMI 2.0
DisplayPort in	1 × 1.2a	1 × 1.2a	1 × 1.2a
VGA in	1	1	1
Audio in	1 × 3.5 mm microphone jack 1 × 3.5 mm audio jack (VGA)	1 × 3.5 mm microphone jack 1 × 3.5 mm audio jack (VGA)	1 × 3.5 mm microphone jack 1 × 3.5 mm audio jack (VGA)
Audio out	1 × 3.5 mm earphone jack	1 × 3.5 mm earphone jack	1 × 3.5 mm earphone jack
S/PDIF out	1 (optical)	1 (optical)	1 (optical)
RS-232	1	1	1
OPS slot (for slot-in PC)	1	1	1
Ethernet	Gigabit	Gigabit	Gigabit
Wi-Fi	Wi-Fi 6	Wi-Fi 6	Wi-Fi 6
Bluetooth®	Bluetooth 5.2	Bluetooth 5.2	Bluetooth 5.2
Built-in peripherals			
NFC sensor	Yes	Yes	Yes
Ambient light sensor	Yes	Yes	Yes
IR sensor	Yes	Yes	Yes
Motion sensor	Yes	Yes	Yes
Microphone	8-microphone array (range: up to 8 m 26ft)	8-microphone array (range: up to 8 m 26ft)	8-microphone array (range: up to 8 m 26ft)
Speaker	2 × 20 W (max)	2 × 20 W (max)	2 × 20 W (max)
Subwoofer	1 × 16 W	1 × 16 W	1 × 16 W
Air quality sensor	CO ₂ , PM _{2.5} , PM ₁₀ , TVOC, CH ₂ O, temperature, humidity	CO ₂ , PM _{2.5} , PM ₁₀ , TVOC, CH ₂ O, temperature, humidity	CO ₂ , PM _{2.5} , PM ₁₀ , TVOC, CH ₂ O, temperature, humidity
Air ionizer	Yes	Yes	Yes



Model	RP6504	RP7504	RP8604
Power			
ENERGY STAR®	Yes	Yes	Yes
Power	AC 100-240V 50/60Hz	AC 100-240V 50/60Hz	AC 100-240V 50/60Hz
Standby power consumption	<0.5 W	<0.5 W	<0.5 W
Typical power consumption	95.0 W	109.3 W	164.4 W
Physical			
Dimensions (W × H × D)	1488.4 × 937.6 × 117.7 mm (58.6 × 36.9 × 4.6 in)	1709.4 × 1060.8 × 117.7 mm (67.3 × 41.8 × 4.6 in)	1957.0 × 1200.5 × 117.7 mm (77.0 × 47.3 × 4.6 in)
Shipping dimensions (W × H × D)	1628 × 1024 × 208 mm (64.1 × 40.3 × 8.2 in)	1863 × 1155 × 205 mm (73.3 × 45.5 × 8.1 in)	2110 × 1291 × 205 mm (83.0 × 50.8 × 8.1 in)
Weight (product I shipping)	40.6 kg 47.8 kg (89.5 lbs 105.4 lbs)	52.2 kg 64.5 kg (115.1 lbs 142.2 lbs)	64.7 kg 79.6 kg (142.6 lbs 175.5 lbs)
Mount (screws)	VESA 600 × 400 mm (4 × M8 × 25L)	VESA 800 × 400 mm (4 × M8 × 25L)	VESA 800 × 600 mm (4 × M8 × 25L)
Pen tray	Yes	Yes	Yes
Environment			
Operating temperature	0°C ~ 40°C 32°F ~ 104°F	0°C ~ 40°C 32°F ~ 104°F	0°C ~ 40°C 32°F ~ 104°F
Storage temperature	-20°C ~ 60°C -4°F ~ 140°F	-20°C ~ 60°C -4°F ~ 140°F	-20°C ~ 60°C -4°F ~ 140°F
Storage humidity	10% ~ 90% RH non-condensing	10% ~ 90% RH non-condensing	10% ~ 90% RH non-condensing
Operating humidity	10% ~ 90% RH non-condensing	10% ~ 90% RH non-condensing	10% ~ 90% RH non-condensing
Software			
Whiteboarding	EZWrite 6.0	EZWrite 6.0	EZWrite 6.0
Wireless screen sharing	InstaShare 2	InstaShare 2	InstaShare 2
Account management	AMS	AMS	AMS
Device management	DMS	DMS	DMS
Quick access tool	Floating Tool	Floating Tool	Floating Tool
Broadcast system	X-Sign Broadcast	X-Sign Broadcast	X-Sign Broadcast
Accessories			
Cables	1 × VGA (3 m 9.8 ft), 1 × HDMI (3 m 9.8ft), 1 × USB Type-B for touch (3 m 9.8ft), 1 × USB-C (1.5 m 4.9 ft)	1 × VGA (3 m 9.8 ft), 1 × HDMI (3 m 9.8ft), 1 × USB Type-B for touch (3 m 9.8ft), 1 × USB-C (1.5 m 4.9 ft)	1 × VGA (3 m 9.8 ft), 1 × HDMI (3 m 9.8ft), 1 × USB Type-B for touch (3 m 9.8ft), 1 × USB-C (1.5 m 4.9 ft)
Wall mount	1	1	1
Pen	2	2	2
Remote control	1	1	1



BenQ

©2023 BenQ Corp. Specification may vary by region, please visit your local stores for details. Actual product's features and specifications are subject to change without notice.
This material may include corporate names and trademarks of third parties which are the properties of the third parties respectively.
Doc.: PDP_RP6504/RP7504/RP8604_IFP_EN_202312