

# THREADED VALVES



# GOYEN - T SERIES

## THREADED VALVES

### PRODUCT LEAFLET



T Series

### DESCRIPTION

High performance diaphragm valve with threaded ports. Available with integral pilot or as remotely piloted valve. Outlet at 90° to inlet.

### SUITABLE FOR

Dust collector applications, in particular for reverse pulse jet filter cleaning and its variations, including bag filters, cartridge filters and envelope filters, ceramic filters and sintered metal fibre filters.

### CONSTRUCTION

**Body:** Aluminium (diecast)

**Ferrule:** 305 SS

**Armature:** 430FR SS

**Seals:** Nitrile or Viton

**Spring:** 304 SS

**Screws:** 302 or 304 SS

**Diaphragm Seat:** PA-66 (standard), Viton or Nitrile coated mild steels, Nitrile, Viton or High Density PE

Refer to Q Series Solenoid product data sheet for solenoid construction details.

### OPERATION

**Recommended on-time range:** 50–500 ms

**Recommended time between pulses:**

1 minute or greater

### MAINTENANCE

Before conducting any maintenance activity on the system ensure that components are fully isolated from pressure and power supplies. Pressure and power should not be reapplied until the valve has been fully assembled.

Diaphragm and pilot inspection should be conducted annually.

### APPROVALS

- ATEX II 3 GD (RCA/RCAC only)
- CSA (C, US) [C22.2 No 139–10 and UL 429:2009] (CA & RCA)
- C-Tick (CA)
- EMC 2004/108/EC (CA)
- Low Voltage Directive 2006/95/EC (CA)

### WEIGHTS

| SIZE | INTEGRAL PILOT (CA) KG (LB) | REMOTE PILOT (RCA) KG (LB) | SIZE | INTEGRAL PILOT (CA) KG (LB) | INTEGRAL PILOT (CA) KG (LB) |
|------|-----------------------------|----------------------------|------|-----------------------------|-----------------------------|
| 10   | NA                          | 0.06 (0.14)                | 50   | 2.89 (6.38)                 | 2.68 (5.92)                 |
| 35   | 1.04 (2.28)                 | 0.83 (1.83)                | 62   | 3.31 (7.30)                 | 3.09 (6.82)                 |
| 45   | 1.50 (3.30)                 | 1.28 (2.83)                | 76   | 4.77 (10.52)                | 4.56 (10.04)                |

### MAINTENANCE KITS

| MODEL            | NITRILE | VITON | LOW TEMPERATURE –60°C (–76°F) MIN. | INCLUDES   |
|------------------|---------|-------|------------------------------------|--|
| RCA10-6T         | K1001   | K1002 | NA                                 | Diaphragm kits include main and secondary diaphragms (where required) and all springs. |
| CA/RCA35T        | K3500   | K3501 | K3502                              |  |
| CA/RCA45T        | K4502   | K4503 | K4522                              |  |
| CA/RCA50/62T     | K5004   | K5000 | NA                                 |  |
| CA/RCA76T        | K7600   | K7601 | NA                                 | O-ring, armature assembly, armature spring, ferrule                                    |
| Pilot repair kit | K0380   | K0384 | NA                                 |  |

### PRODUCT CHARACTERISTICS AND PERFORMANCE

| SIZE | NOMINAL PORT SIZE |      | NUMBER OF DIAPHRAGMS | FLOW |     |
|------|-------------------|------|----------------------|------|-----|
|      | MM                | INCH |                      | KV   | CV  |
| 10   | 6                 | 1/4  | 1                    | 2.5  | 2.9 |
| 35   | 40                | 1.5  | 1                    | 35   | 42  |
| 45   | 40                | 1.5  | 2                    | 44   | 51  |
| 50   | 50                | 2    | 2                    | 76   | 88  |
| 62   | 62                | 2.5  | 2                    | 91   | 106 |
| 76   | 76                | 3    | 2                    | 144  | 167 |

**Pressure Range:**  
30(5)–860(125) kPa(psi)

**Temperature Range:**  
Nitrile Seals: –40°C (–40°F) to 82°C (179.6°F)  
Viton Seals: –29°C (–20.2°F) to 232°C (449.6°F)

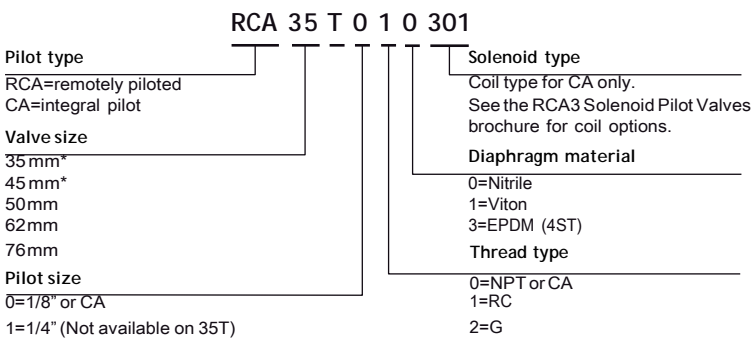


# GOYEN - T SERIES

## THREADED VALVES

### PRODUCT LEAFLET

#### ORDER CODE



\*Note that the 35 & 45 share the same port sizes.

#### ORDER CODE RCA10-6T SERIES

RCA10-6T/645 (1/4" NPT IN/OUT port, 1/8" NPT pilot port)  
RCA10-6T/669 (1/4" RC IN/OUT port, 1/8" RC pilot port)

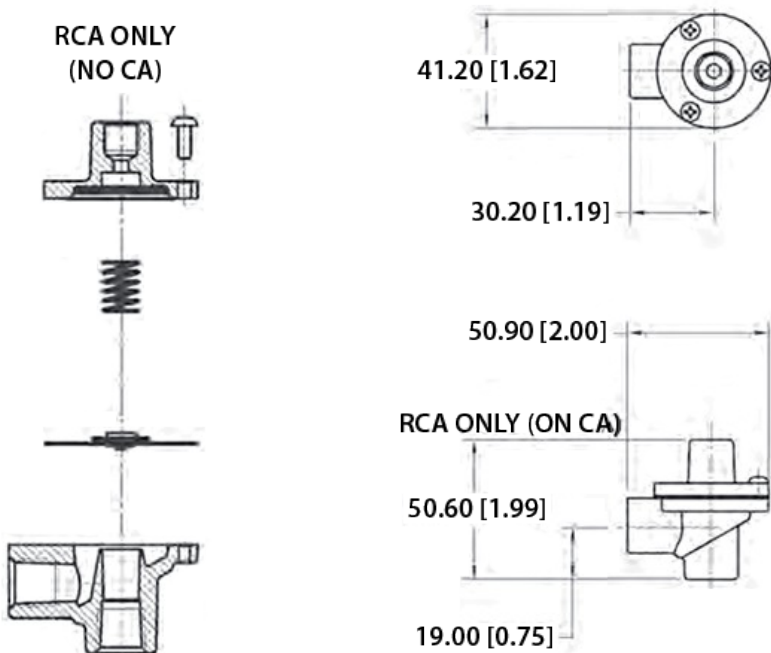
#### EXAMPLES

CA50T010-300  
2" threaded port valve with 2" RC port threads, nitrile seals and 200/240 V AC integral pilot with DIN socket terminals.

RCA50T001  
2" threaded port valve with 1/8" NPT remote pilot port, 2" NPT port threads and viton seals.

#### DIMENSIONS IN MM (AND INCHES)

RCA10-6T

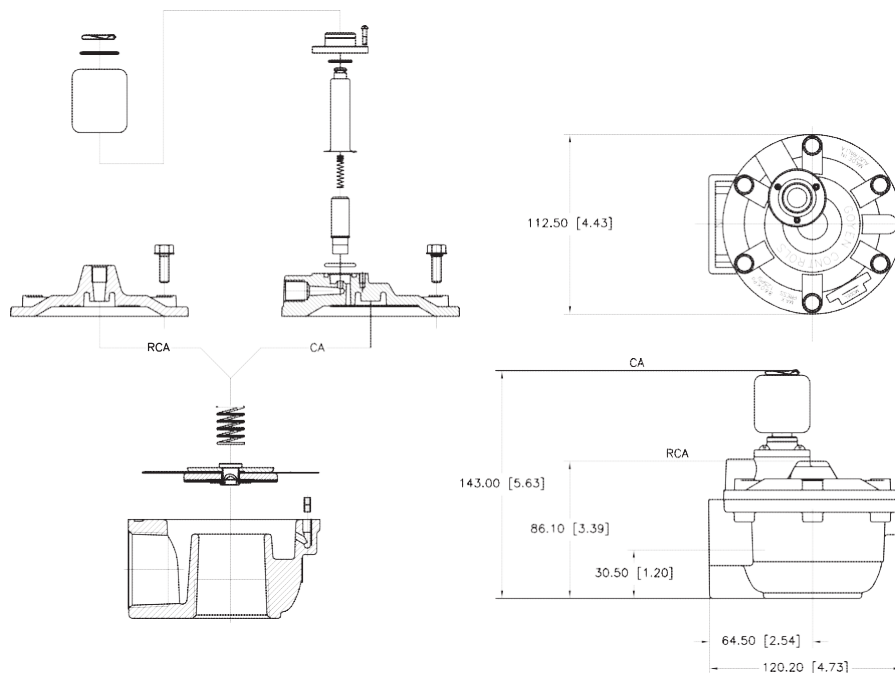


# GOYEN - T SERIES

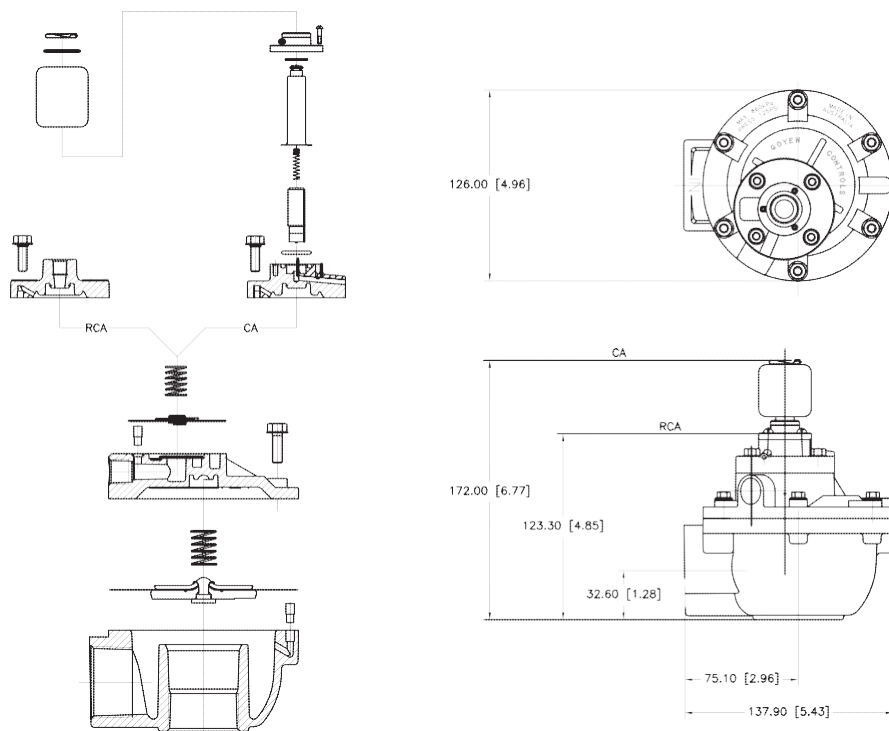
## THREADED VALVES

### PRODUCT LEAFLET

#### CA/RCA35T



#### CA/RCA45T



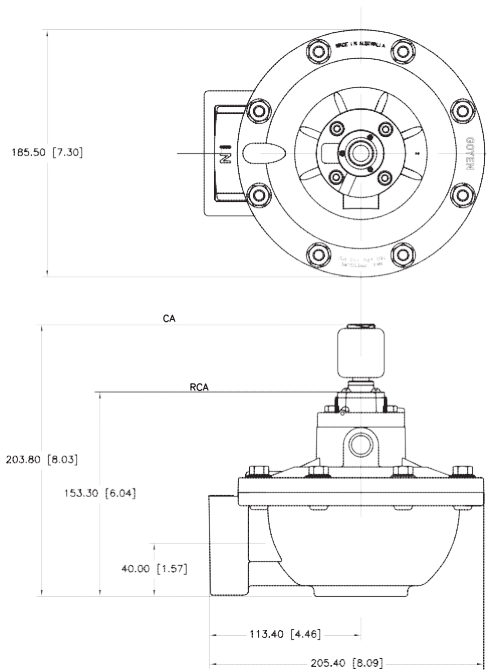
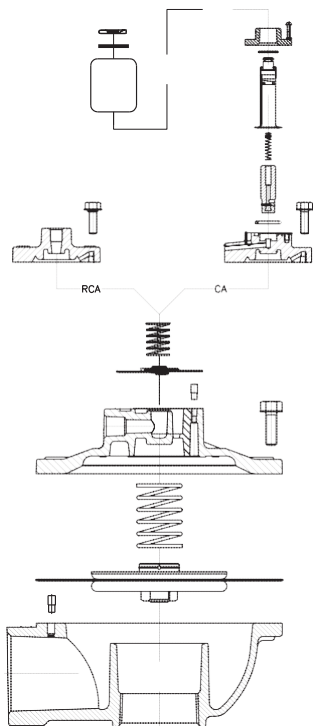


# GOYEN - T SERIES

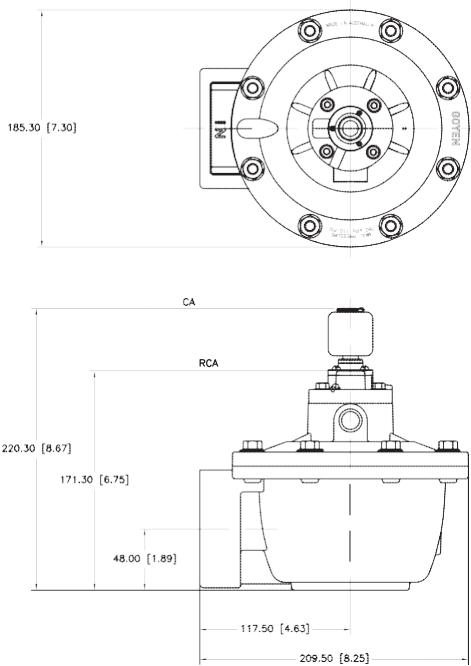
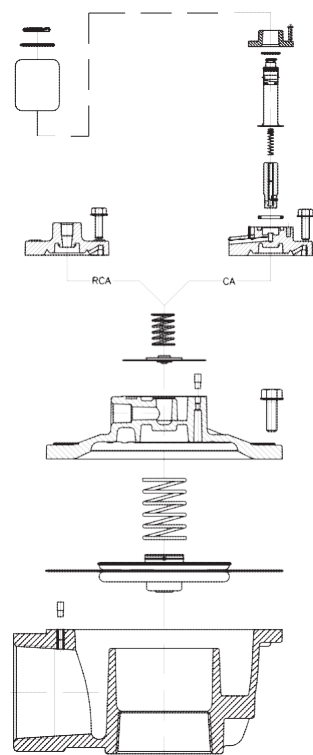
## THREADED VALVES

PRODUCT LEAFLET

CA/RCA50T



CA/RCA62T



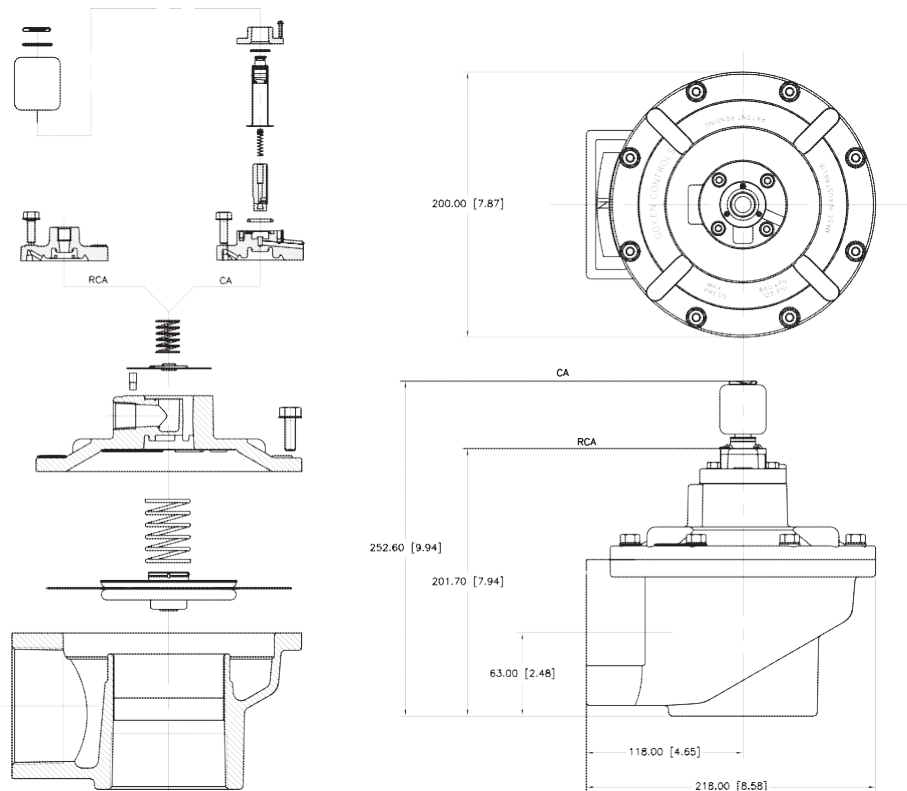


# GOYEN - T SERIES

## THREADED VALVES

PRODUCT LEAFLET

CA/RCA76T





# GOYEN - T SERIES

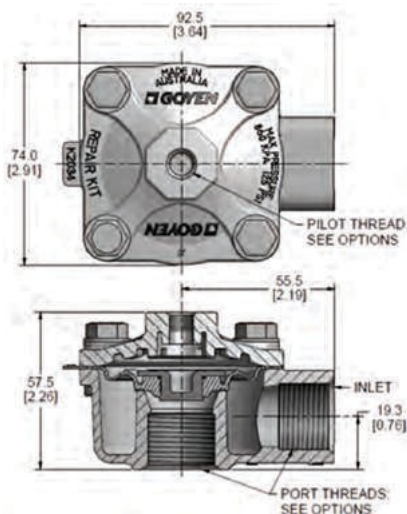
## THREADED VALVES

PRODUCT LEAFLET

### RCAC20T4 - REVERSE PULSE JET VALVES



#### DIMENSIONS IN MM (AND INCHES)



#### DESCRIPTION

High-performance diaphragm valve with threaded ports. Equipped with 'Shockwave' springless diaphragm. The 4 series valves are available as remote pilot valves and may be converted to an integral pilot using either the RCA3DM or RCA3PV screw-in pilots. Outlet is at 90° to inlet.

#### SUITABLE FOR

Dust collector applications, in particular for reverse pulse jet filter cleaning and its variations, including bag filters, cartridge filters and envelope filters, ceramic filters and sintered metal fibre filters.

#### CONSTRUCTION

Body: Aluminium (diecast)  
Screws: 304 Stainless steel  
Diaphragm: Proprietary highperformance engineering thermoplastic Elastomer or Viton

#### OPERATION

Recommended on-time range: 50 to 500 ms  
Recommended time between pulses:  
1 minute or greater

#### MAINTENANCE

Before conducting any maintenance activity on the system ensure that components are fully isolated from pressure and power supplies. Pressure and power should not be reapplied until the valve has been fully assembled.

Diaphragm and pilot inspection should be conducted annually.

#### APPROVALS

The RCAC20T4 meets the requirements of the European Low Voltage Directive 2006/95/EC, when fitted with the RCA3PV pilot.

Please Note: We recommend using Schedule 40 pipe. Thickness OD is as shown below.

| SIZE | OD MM | OD INCHES |
|------|-------|-----------|
| 3/4" | 26.67 | 1.05      |

#### WEIGHTS

| VALVE    | KG (LB)     |
|----------|-------------|
| RCAC20T4 | 0.31 (0.68) |

#### MAINTENANCE KITS

| MODEL         | SHOCKWAVE | VITON |
|---------------|-----------|-------|
| DIAPHRAGM KIT |           |       |
| RCAC20T4      | K2034     | K2033 |

#### PRODUCT CHARACTERISTICS AND PERFORMANCE

| NOMINAL PORT SIZE<br>MM (INCH) | NUMBER OF DIAPHRAGMS | FLOW |    | PRESSURE RANGE<br>KPA (PSI) | TEMPERATURE RANGE °C °(F) |                          |
|--------------------------------|----------------------|------|----|-----------------------------|---------------------------|--------------------------|
|                                |                      | KV   | CV |                             | SHOCKWAVE                 | VITON                    |
| 20(3/4)                        | 1                    | 14   | 17 | 30(5) to 860(125)           | -40(-40) to 82(179.6)     | -29(-20.2) to 232(449.6) |

#### EXAMPLES

RCAC20T4012  
3/4" RC threaded valve with 1/8" RC pilot port thread, Shockwave diaphragm.

Note:  
1/8 Pilot is only available in NPT, RC and G Thread.  
1/4 Pilot is only available in G Thread.

#### ORDER CODE

|                    |        |         |             |
|--------------------|--------|---------|-------------|
| RCAC20T4           | 0      | 1       | 2           |
| Pilot size         | 0=1/8" | 1=1/4"  |             |
| Diaphragm material |        | 1=Viton | 2=Shockwave |
| Thread type        | 0=NPT  | 1=RC    | 2=G         |



# GOYEN - T SERIES

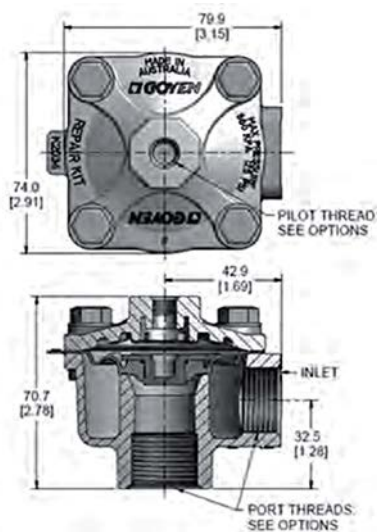
## THREADED VALVES

PRODUCT LEAFLET

### RCAC20ST4 - REVERSE PULSE JET VALVES



#### DIMENSIONS IN MM (AND INCHES)



#### DESCRIPTION

High-performance diaphragm valve with short threaded ports. Equipped with 'Shockwave' springless diaphragm. The 4 series valves are available as remote pilot valves and may be converted to an integral pilot using either the RCA3DM or RCA3PV screw-in pilots. Outlet is at 90° to inlet.

#### SUITABLE FOR

Dust collector applications, in particular for reverse pulse jet filter cleaning and its variations, including bag filters, cartridge filters and envelope filters, ceramic filters and sintered metal fibre filters.

#### CONSTRUCTION

Body: Aluminium (diecast)  
Screws: 304 Stainless steel  
Diaphragm: Proprietary highperformance engineering thermoplastic Elastomer or Viton

#### OPERATION

Recommended on-time range: 50 to 500 ms  
Recommended time between pulses:  
1 minute or greater

#### MAINTENANCE

Before conducting any maintenance activity on the system ensure that components are fully isolated from pressure and power supplies. Pressure and power should not be reapplied until the valve has been fully assembled.

Diaphragm and pilot inspection should be conducted annually.

#### APPROVALS

The RCAC20ST4 meet the requirements of the European Low Voltage Directive 2006/95/EC, when fitted with the RCA3PV pilot.

Please Note: We recommend using Schedule 40 pipe. Thickness OD is as shown below.

| SIZE | OD MM | OD INCHES |
|------|-------|-----------|
| 3/4" | 26.67 | 1.05      |

#### WEIGHTS

| VALVE     | KG (LB)     |
|-----------|-------------|
| RCAC20ST4 | 0.30 (0.66) |

#### MAINTENANCE KITS

| MODEL         | SHOCKWAVE | VITON |
|---------------|-----------|-------|
| DIAPHRAGM KIT |           |       |
| RCAC20ST4     | K2034     | K2033 |

#### PRODUCT CHARACTERISTICS AND PERFORMANCE

| NOMINAL PORT SIZE<br>MM (INCH) | NUMBER OF DIAPHRAGMS | FLOW |    | PRESSURE RANGE<br>KPA (PSI) | TEMPERATURE RANGE °C °(F) |                          |
|--------------------------------|----------------------|------|----|-----------------------------|---------------------------|--------------------------|
|                                |                      | KV   | CV |                             | SHOCKWAVE                 | VITON                    |
| 20 (3/4)                       | 1                    | 14   | 17 | 30(5) to 860(125)           | -40(-40) to 82(179.6)     | -29(-20.2) to 232(449.6) |

#### EXAMPLES

RCAC20ST4012  
3/4" RC Short threaded valve with 1/8" RC pilot, 4/3" RC port threads, Shockwave diaphragm.

Note:  
1/8 Pilot available in NPT, RC and G Thread.  
1/4 Pilot is only available in G Thread.

#### ORDER CODE

|                    |                      |        |                        |
|--------------------|----------------------|--------|------------------------|
| RCAC20ST4          | 0                    | 1      | 2                      |
| Pilot size         | 0=1/8"               | 1=1/4" |                        |
| Diaphragm material |                      |        | 1=Viton<br>2=Shockwave |
| Thread type        | 0=NPT<br>1=RC<br>2=G |        |                        |





# GOYEN - T SERIES

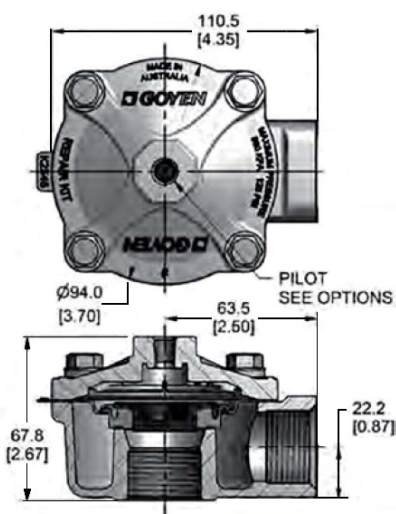
## THREADED VALVES

PRODUCT LEAFLET

### RCAC25T4 - REVERSE PULSE JET VALVES



#### DIMENSIONS IN MM (AND INCHES)



#### DESCRIPTION

High-performance diaphragm valve with threaded ports. Equipped with 'Shockwave' springless diaphragm. The 4 series valves are available as remote pilot valves and may be converted to integral pilot using either the RCA3DM or RCA3PV screw-in pilots. Outlet is at 90° to inlet.

#### SUITABLE FOR

Dust collector applications, in particular for reverse pulse jet filter cleaning and its variations, including bag filters, cartridge filters and envelope filters, ceramic filters and sintered metal fibre filters.

#### CONSTRUCTION

Body: Aluminium (diecast)  
Screws: 304 Stainless steel  
Diaphragm: Proprietary highperformance engineering thermoplastic Elastomer or Viton

#### OPERATION

Recommended on-time range: 50 to 500 ms  
Recommended time between pulses:  
1 minute or greater

#### MAINTENANCE

Before conducting any maintenance activity on the system ensure that components are fully isolated from pressure and power supplies. Pressure and power should not be reapplied until the valve has been fully assembled.

Diaphragm and pilot inspection should be conducted annually.

#### APPROVALS

The RCAC25T4 meets the requirements of the European Low Voltage Directive 2006/95/EC, when fitted with the RCA3PV pilot.

Please Note: We recommend using Schedule 40 pipe. Thickness OD is as shown below.

| SIZE | OD MM | OD INCHES |
|------|-------|-----------|
| 1"   | 33.4  | 1.315     |

#### WEIGHTS

| VALVE    | KG (LB)     |
|----------|-------------|
| RCAC25T4 | 0.56 (1.23) |

#### MAINTENANCE KITS

| MODEL         | SHOCKWAVE | VITON |
|---------------|-----------|-------|
| DIAPHRAGM KIT |           |       |
| RCAC25T4      | K2546     | K2551 |

#### PRODUCT CHARACTERISTICS AND PERFORMANCE

| NOMINAL PORT SIZE<br>MM (INCH) | NUMBER OF DIAPHRAGMS | FLOW |    | PRESSURE RANGE<br>KPA (PSI) | TEMPERATURE RANGE °C °(F) |                          |
|--------------------------------|----------------------|------|----|-----------------------------|---------------------------|--------------------------|
|                                |                      | KV   | CV |                             | SHOCKWAVE                 | VITON                    |
| 25 (1)                         | 1                    | 24   | 27 | 30(5) to 860(125)           | -40(-40) to 82(179.6)     | -29(-20.2) to 232(449.6) |

#### EXAMPLES

RCAC25T4012  
1" RC threaded port valve with 1/8" RC pilot port threads, Shockwave diaphragm.

Note:  
1/8 Pilot available in NPT, RC and G Thread.  
1/4 Pilot is only available in G Thread.

#### ORDER CODE

|                    |                      |        |                        |
|--------------------|----------------------|--------|------------------------|
| RCAC25T4           | 0                    | 1      | 2                      |
| Pilot size         | 0=1/8"               | 1=1/4" |                        |
| Diaphragm material |                      |        | 1=Viton<br>2=Shockwave |
| Thread type        | 0=NPT<br>1=RC<br>2=G |        |                        |



# GOYEN - T SERIES

## THREADED VALVES

PRODUCT LEAFLET

### DIAPHRAGM SERVICE KITS FOR DELETED VALVES

#### Maintenance kits

| MODEL     | NITRILE | VITON | LOW TEMPERATURE –60°C (–76°F) MIN. | INCLUDES   |
|-----------|---------|-------|------------------------------------|--|
| CA/RCA20T | K2000   | K2007 | NA                                 | Diaphragm kits include main and secondary diaphragms (where required) and all springs. |
| CA/RCA25T | K2501   | K2503 | K2504                              |  |
| CA/RCA32T | K2500   | NA    | NA                                 |  |
| CA/RCA40T | K4000   | NA    | NA                                 |  |



**A.P.S. CONTROL CO., LTD., THAILAND**

7 SOI ON-NUCH 62 SUKHUMVIT 77 RD. ON-NUCH SUANLUANG BANGKOK 10250 WWW.APSCONTROL.CO.TH

Tel: 0 2721 1800 (Auto) Fax: 0 2721 1791 E-mail: sales@apscontrol.co.th Line ID: aps.sales Tax.ID: 010-55430-20618

Note: We are engineering partner as a total system solution provider, GOYEN manufactures a range of components to ensure cost effective and reliable cleaning system design, installation and operation within a reverse pulse filter. Within a reverse pulse filter the overall cleaning efficiency and long term performance of the bags or cartridges are critically dependent upon to control of the cleaning air into the individual filter bag or cartridge. GOYEN products are produced to exacting tolerances and quality standards to ensure their effectiveness within any reverse pulse filter. As a comprehensive solution provider, We have great quality control procedures. The calculate various system designs and can work together perfectly. Finally we are fully committed to maintaining environment quality together.

**GOYEN CONTROLS PTY LIMITED, AUSTRALIA**

Note: The information and data contained in this document are based on our general experience and are believed to be correct. They are given in good faith and are intended to provide a guideline for the selection and use of our products. Since the conditions under which our products may be used are beyond our control, this information does not imply any guarantee of final product performance and we cannot accept any liability with respect to the use of our products. The quality of our products is guaranteed under our conditions of sale. Existing industrial property rights must be observed.

THE GOYEN FLANGED VALVES / FS-SERIES © 2017 Goyen. All Rights Reserved.