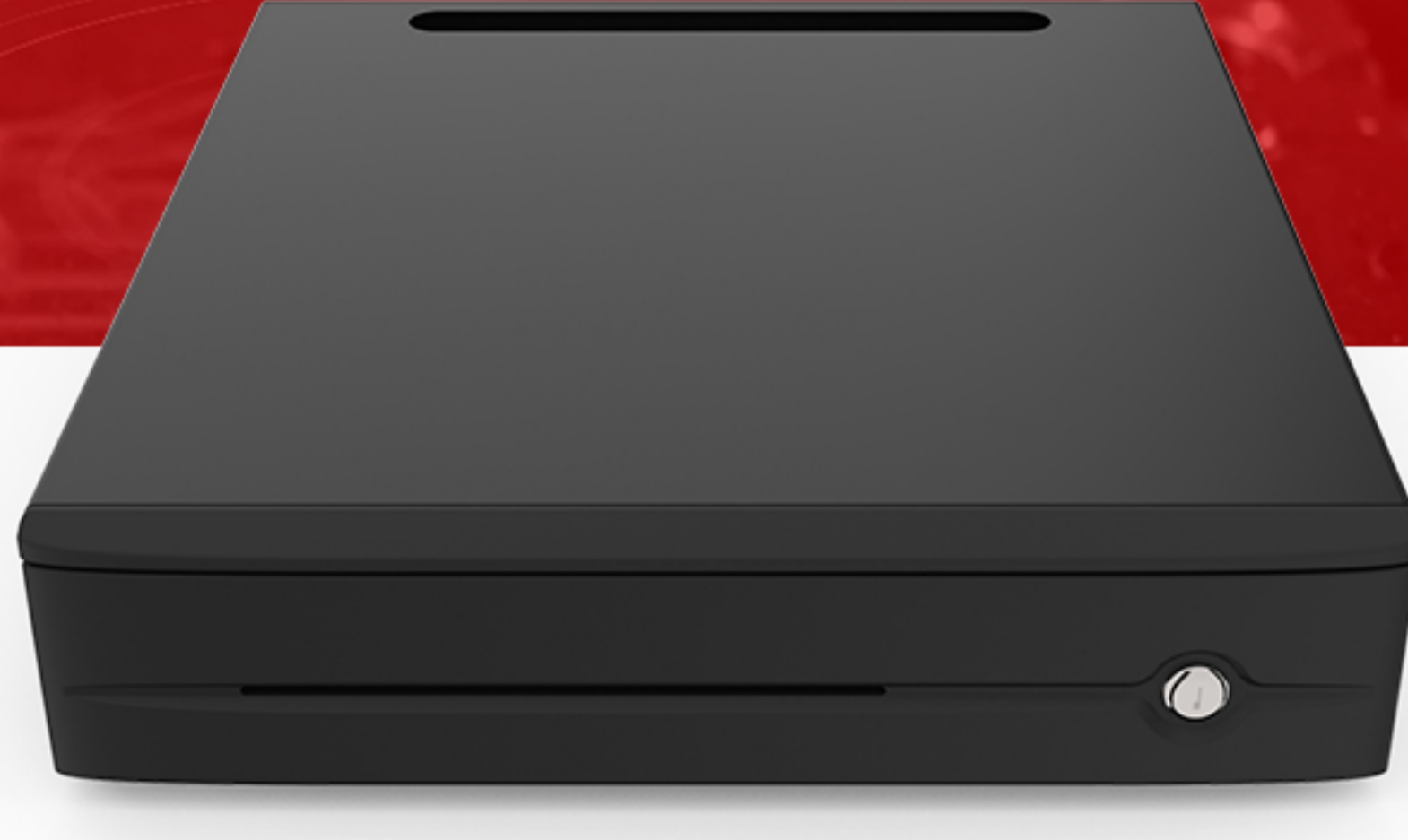


# Classic Roller Cash Drawer CM-410L

The most popular type of cash drawer, solid casing with smooth rollers and dual tray structure, for durable performance and affordable medium pricing.



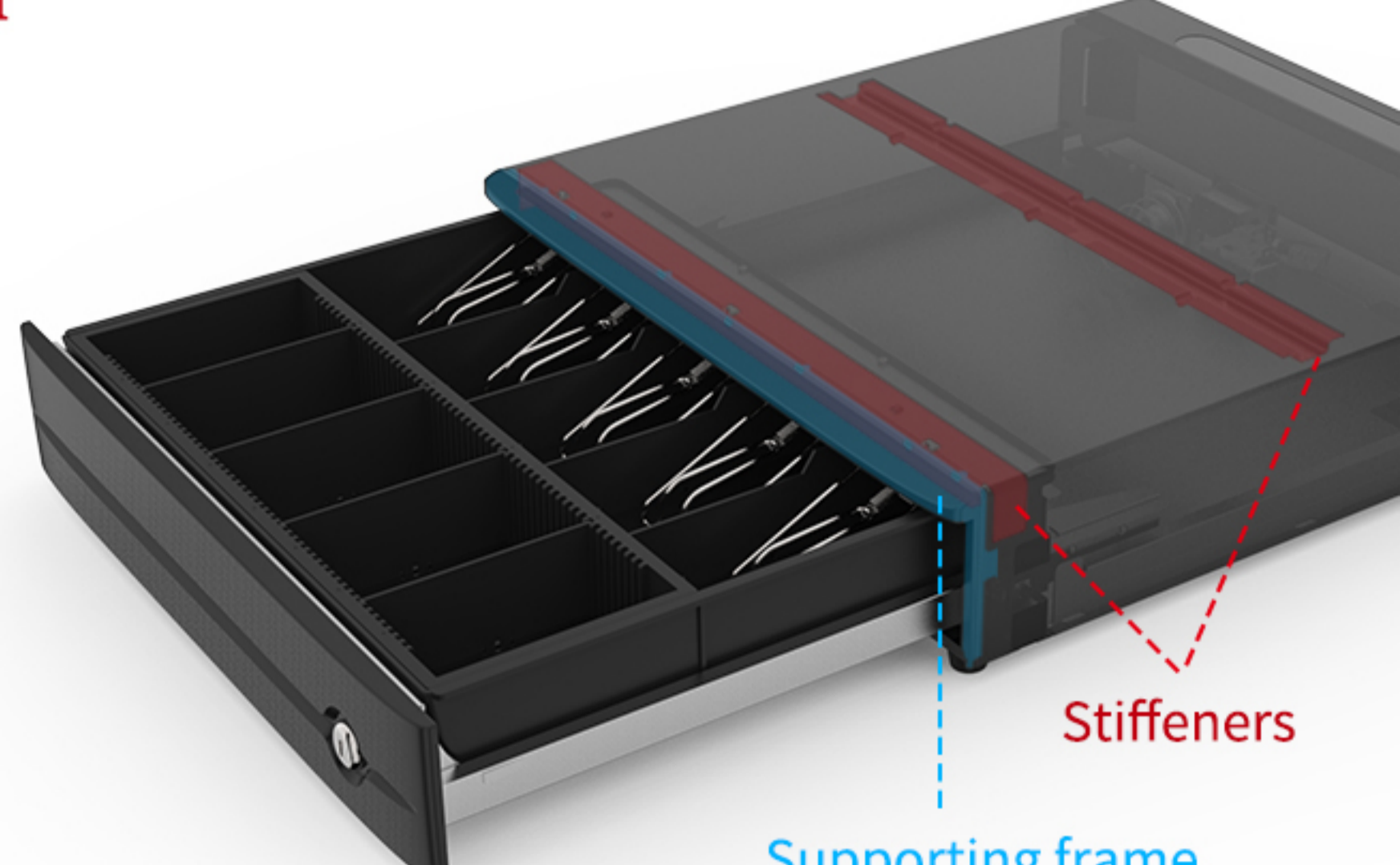
<b>Model No</b>	CM-410L
<b>Dimensions(mm)</b>	410W×460D×100H (Including feet height) 410W×460D×90H (Excluding feet height)
<b>Dimensions(inch)</b>	16.1W×18.1D×3.9H (Including feet height) 16.1W×18.1D×3.5H (Excluding feet height)
<b>Cash Tray</b>	4,5 Bills / 5,8 Coins
<b>Lockset</b>	3-Position Keylock
<b>Material</b>	SPCC (case & drawer), ABS (front panel & inner cash tray)
<b>Net Weight</b>	7kg

## FEATURES

### Strong Construction Design

The case and the drawer are made of heavy duty steel, while the front panel and inner cash tray are made of shatter-resistant ABS plastic.

The load-bearing capacity exceeds 50KG. For further reinforcement, stiffeners are engineered under the top plate of the case, and a supporting frame is added around the front panel. Cash drawer can bear heavy weight without any deformation even after long-term use.



### Over 1 Million Lifecycles

Equipped with high durability release mechanism and roller to ensure smooth opening and closing. Tested to over 1 million opening/closing cycles.

No fear of any high-frequency use environment to meet different needs of various stores.



### Removable Cash Tray With Large-capacity Storage

The cash drawer has a double tray structure, which is composed of a load-bearing drawer tray and a removable cash tray. The cash tray (with a removable coin tray) can be taken out separately for easy counting. Optional lockable cover of cash tray makes it more secure for cash transfer.



The cash tray has enough space and different layouts to suit different currencies such as Euro, US dollar, British pound, RMB, ect.

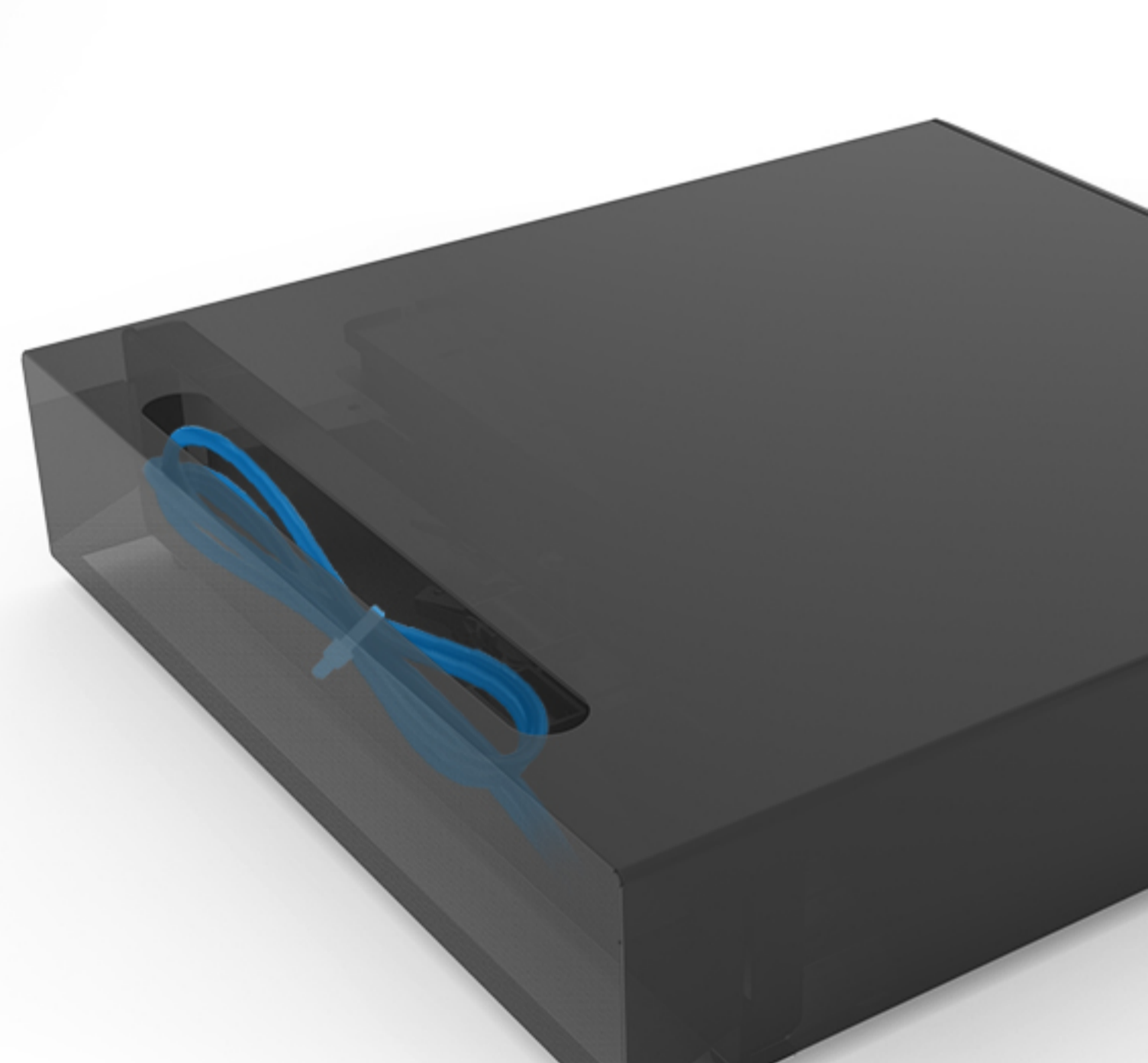
A media slot on the front panel for quick storage of large bills, checks, receipts and cards without opening drawer.



### Special Hidden Cable Slot

A unique cable slot is designed to hide all cable of different POS devices such as cash drawer, cash register, printer, electronic scale, ect.

Hidden wiring makes the cashier area more tidy. No longer disturbed by the messy cables on the back of devices, the customers will get a better experience when checking out.

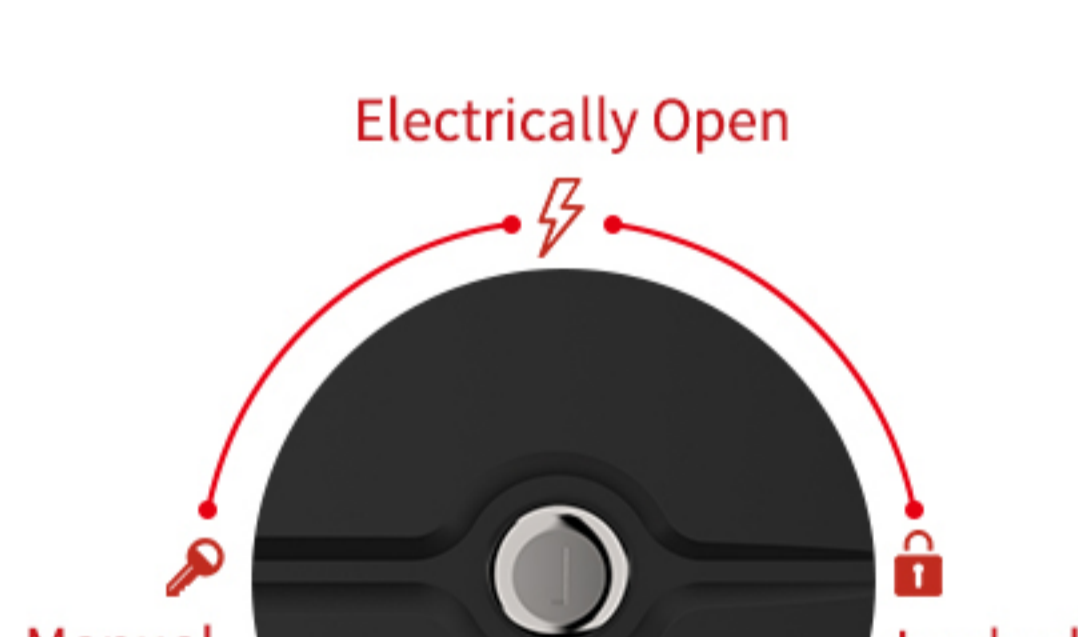


### More Features Provide Better Experience

Curved front panel create a simple and elegant appearance.

Secured with 3-position key lock (for manual open, auto open by printer/POS, lock).

A removable cable interface at the bottom make it easy to replace the cable without disassembling the bottom plate.



## OPTIONS

#### ■ Micro Switch



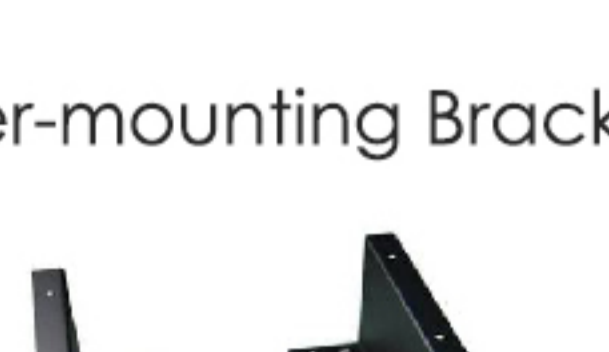
#### ■ Lockable Cover of Cash Tray



#### ■ Different Cash Tray Layout



#### ■ Under-mounting Bracket

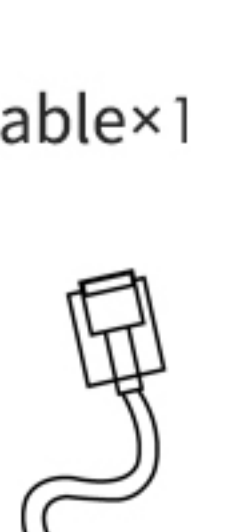
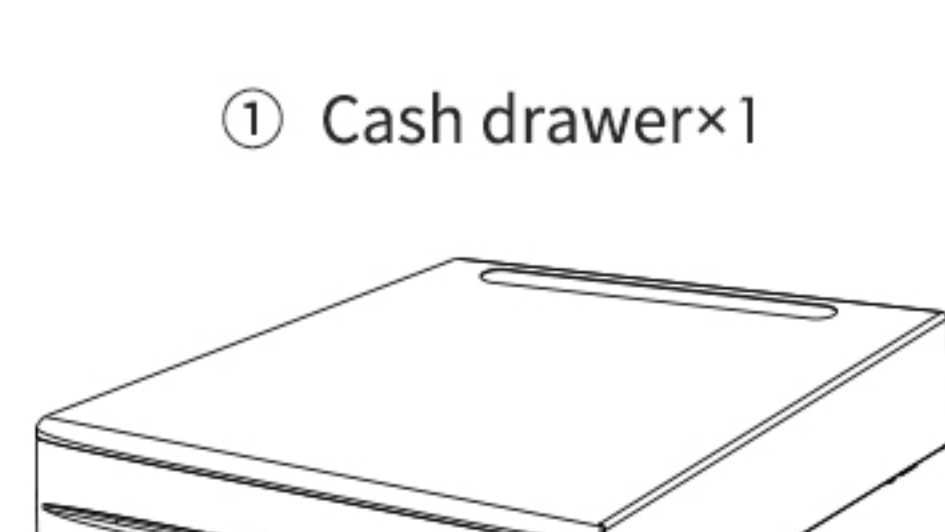


## PACKING LIST

① Cash drawer×1

② Cable×1

③ Key×2



**MAKEN**  
Make It Happen

XIAMEN MAKEN TECH CO., LTD.

Web: [www.maken.com](http://www.maken.com)