

CHUPHOTIC VENUS UPS

Performance Power Solutions

Venus Ultimate VNU 1-10K



DSP True Online Double Conversion UPS
Rack and Tower Convertible



มอก.1291
เล่ม 1-2553
เล่ม 2-2553
เล่ม 3-2555

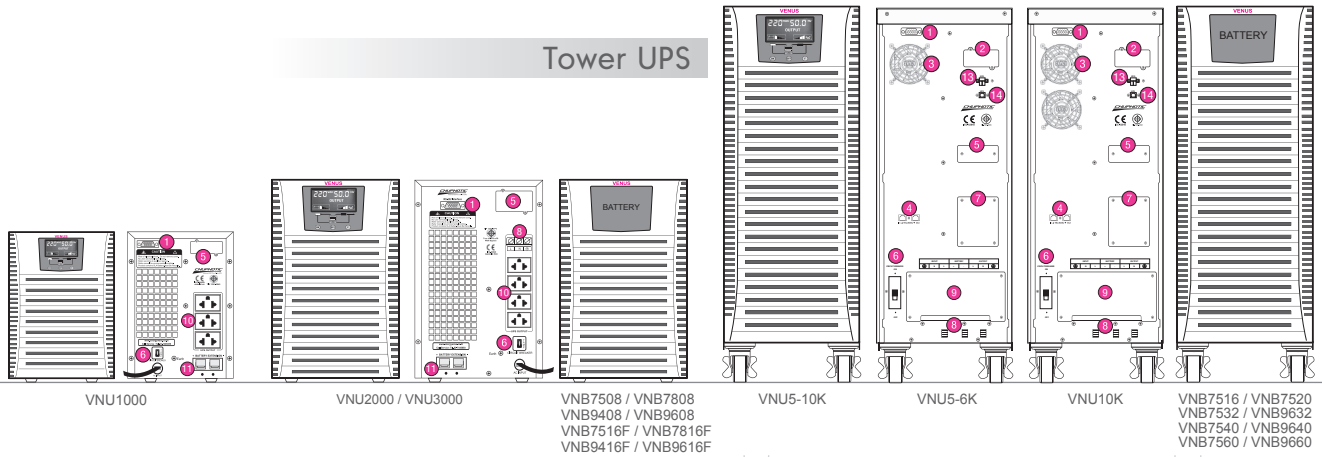


Features

- True Online Double Conversion Pure Sine Wave UPS
- Advanced DSP digital control technology
- 2 Level IGBT Inverter Technology
- High Input power factor correction (PFC)>0.99
- Rackmount 19" 2U, 3U and 5U
- Output pure sine wave less than 2%(THDv)
- Output voltage 220Vac +/-1%
- High inverter efficiency(approx.≥92%)
- Built in static transfer switch(SCR)
- Self diagnosis at UPS start up/Manual self test
- Advanced battery management(ABM)
- EMI/RFI and power line noise protection
- Cold start function
- Surge, lightning, spike, blackout, brownout, overload and short circuit
- RS232 communication with UPSilon 2000 monitoring software / RS485 and USB port (option)
- External battery bank (option)
- SNMP/HTTP monitor capability (option)
- Parallel redundancy N+X (option) 5-10kVA
- Maintenance bypass switch 5-10kVA
- Automatic/Manual bypass
- Economy mode(ECO), Emergency power off(EPO) (option)
- Output Isolation Transformer (option)
- Compatible with Generator

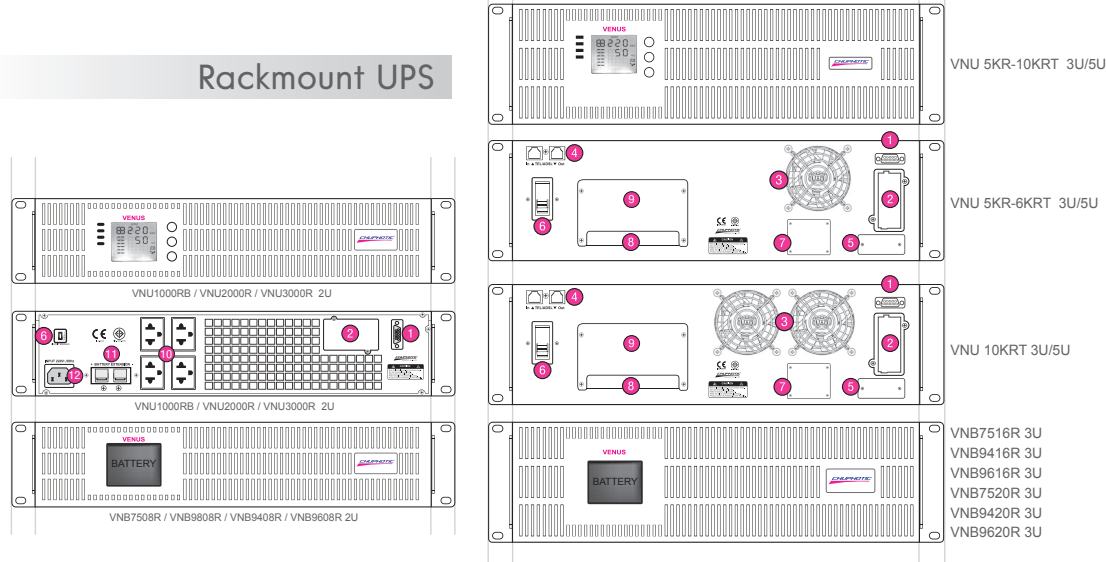


Tower UPS



Rackmount UPS

- ① RS232 port
- ② SNMP card slot
- ③ Fan
- ④ RJ45
- ⑤ Parallel Port
- ⑥ AC input breaker
- ⑦ Maintenance Bypass Switch
- ⑧ Input/Output Terminal
- ⑨ Terminal cover
- ⑩ Outlet 3 Pcs(4 Pcs Option)
- ⑪ Battery Extension
- ⑫ Inlet IEC320
- ⑬ EPO
- ⑭ UPS



VENUS ULTIMATE

DSP True Online Double Conversion UPS



SPECIFICATION

Model	Tower UPS	VNU1000	VNU2000	VNU3000	VNU5K	VNU6K	VNU10K
	Rackmount UPS	VNU1000RTB	VNU2000RT	VNU3000RT	VNU5KRT	VNU6KRT	VNU10KRT
CAPACITY	For computer load	1000VA/900W	2000VA/1800W	3000VA/2700W	5000VA/4500W	6000VA/5400W	10000VA/8000W
SYSTEM	Controller	Intelligent UPS with DSP control			Intelligent UPS with DSP control 2level IGBT Technology		
	Technology	High Frequency Double Conversion Pure sine wave UPS, Power Factor Correction(PFC) with IGBT Technology					
INPUT	Voltage	220 Vac Single phase nominal voltage					
	Voltage range	110-290Vac at half load, 160-290 Vac at full load			120-286Vac at half load, 160-286 Vac at full load		
	Frequency	50/60 Hz ±10% (auto detect) at nominal voltage					
	Power factor	>0.99 at full load, THDI≤6%					
OUTPUT	Voltage	220Vac ±1% / (200, 208, 230, 240 selecting on LCD panel and software)					
	Phase	Single phase					
	Frequency	Normally locked to line frequency, Free running 50Hz ±0.1%/(60 Hz selecting on LCD panel and software)					
	Wave form	Pure sine wave					
	Harmonic distortion THDV	<2% at full load(linear load), <5% at full load (non linear load)					
	Transient condition	±5% for 100% instantaneous load variation					
	Overload capability	120% for 60sec, 150% for 30 sec, >150% for 300ms, then automatic switch to bypass			125% for 60sec, 150% for 30 sec, >150% for 300sec, then automatic switch to bypass		
	Crest factor	3 : 1					
EFFICIENCY	Protection	Overload, Over voltage, Under voltage, Shot circuit, Over temperature and Battery low voltage shutdown					
	DC to AC	Approximate ≥ 85%			Approximate ≥ 92%		
	AC to AC	≥ 87% at full linear load			≥ 92% at full linear load		
BATTERY	Type	Sealed Lead Acid (maintenance-free) Rechargeable (High rate/ UL 94-V0 option)					
	Capacity	3x12V 7.5Ah	8x12V 7.5Ah		20x12V 7.5Ah(16pcs option)		20x12V 9.6Ah
	Voltage	36Vdc	96Vdc		240Vdc(192Vdc option)		(16pcs option)
	Standard backup time	5min 900W	6min 1800W	5min 2700W	5min 4500W	4min 5400W	3min 8000W
	Extend backup time	10-120 min					
	Recharge time	3 hours to 90% after load discharged					
	Charger Current(A)	1.5A (3.5A-7A option)			1.5A/5.5A (3.5A-7A option)		
	Battery temperature compensation for recharge	Option					
TRANSFER TIME	Main to battery mode Battery mode to main	Zero transfer time (0 ms.)					
INDICATOR	Front panel LED	Line, Inverter, Bypass and Battery					
	Front panel LCD	Operate UPS status, Input voltage, Output voltage, Frequency, Bypass, Battery voltage, % Battery, % Load, VA, Watt, Temperature, Fan and Fault code					
PROTECTION	EMI/RFI attenuation	>40 dB					
	Surge protection	UL recognized surge protection to std.1449					
	Surge energy dissipation	220 Joules 300Vac (510 Joules option)(2 microsec wave form)					
AUDIBLE ALARM	Multiple tones with reset for silence	Mains Failure, Low battery, Overload and UPS fault					
INLET	Tower UPS	Power cord 1.5 meter NEMA 5-15P fixed cabinet			Terminal		
	Rackmount UPS	Power cord 1.5 meter NEMA 5-15P - IEC 320			Terminal		
OUTLET	Tower UPS	3xUniversal or IEC320-C13	4xUniversal or IEC320-C13 + Terminal		Terminal		
	Rackmount UPS	4xUniversal or IEC320-C13			Terminal		
COMUNICATION INTERFACE	DB-9 connector	RS-232 serial port can be connected to PC, workstation or servers for automatic unattended shutdown/ RS485 and USB port (option)					
	Software	UPSilon2000 supported for windows 95, 98, NT, 2000, Me, XP, Novell Netware, Linux, FreeBSD (IBM, Sun, Solaris option)					
	SNMP/HTTP capability.	Option					
ACOUSTIC NOISE	At 1 meter	< 45 dBA			< 50 dBA		
ENVIRONMENT	Temperature	0-50°C					
	Humidity	0-95 % (Non-Condensing)					
DIMENSIONS (WxDxH) mm	Tower UPS / Long Backup	145x350x236	190x424x328		260x717x560		
	Rackmount UPS	483x450x2U			483x650x3U		
	Battery unit extension (option)	Separate (UPS and Battery extension rack)					
WEIGHT (approximate in Kg.)	Tower UPS	13	28	29	77	80	
	Rackmount UPS + Battery unit	18(included)	12+23	12+23	30+57	32+69	
	Battery extension rack (option)	Depending on battery capacity					
CONFORMANCE	Design regulation	TIS.1291 Part1-2553, Part2-2553, Part3-2555:C1, CE, EN62040-1, EN62040-2, EN50091-2, EN61000-3-2/-3, EN61000-4-5			TIS.1291 Part1-2553, Part2-2553, Part3-2555:C1, CE, EN62040-1, EN62040-2, EN55022, EN61000-4-2/3/4/5		

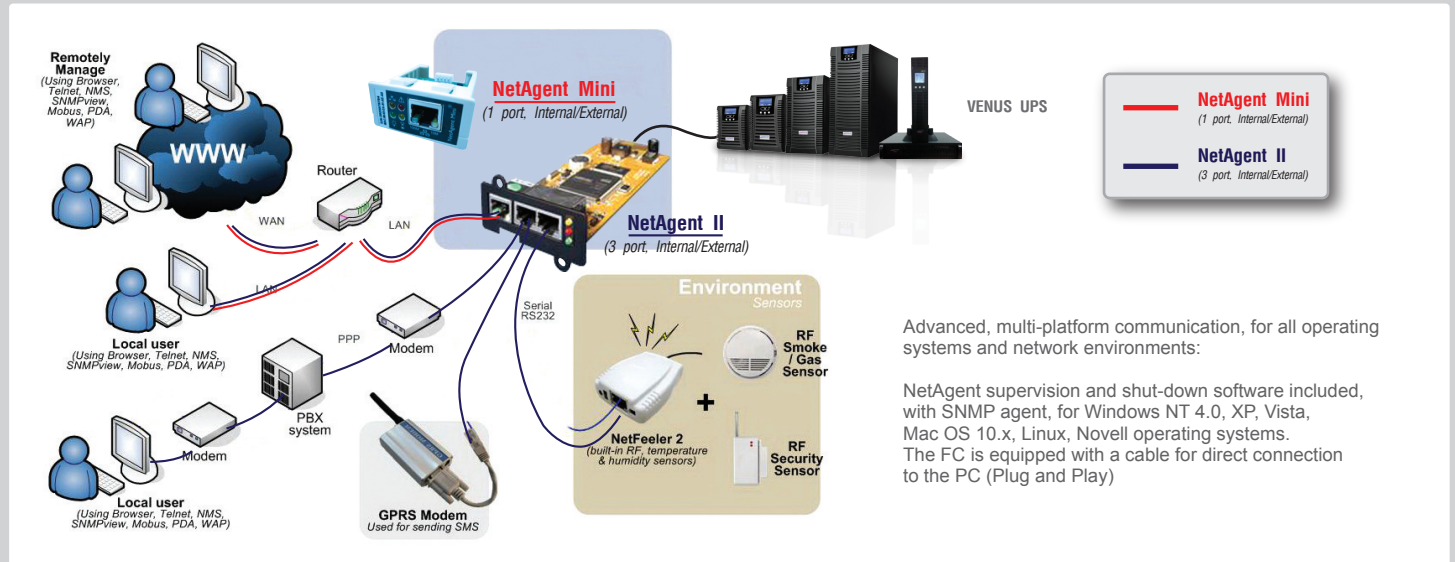
*R = Rack Mount UPS

*Long backup Please call chuphotic

*All above specification may be change without prior notice.

Chuphotic.BRO-43.UPS.VENUS ULTIMATE.Rev1.00/2018

Communication and Power Management Solutions

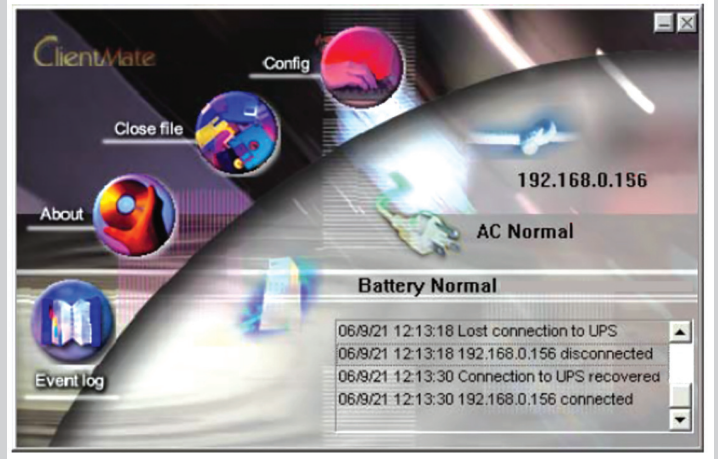


Advanced, multi-platform communication, for all operating systems and network environments:

NetAgent supervision and shut-down software included, with SNMP agent, for Windows NT 4.0, XP, Vista, Mac OS 10.x, Linux, Novell operating systems. The FC is equipped with a cable for direct connection to the PC (Plug and Play)

ADVANCED COMMUNICATION

- Comprehensive UPS management with flexible configuration via Web Browser, NMS, Telnet or SNMP.
- Support advance encryption: HTTPS, SSL, SSH, SNMPv3
- Centralized authentication by Radius
- Event notification via E-mail, SMS or Trap
- Support NetFeeler II (environment monitoring) with temperature, humidity, water presence, smoke and door / window sensors
- Support USB Wifi 802.11b/g, USB flash disk / external USB HDD, compatible USB camera & more
- Support UPS MIB, RFC1628, PPC MIB
- Support GPRS modem
- Multi-language user interface
- Real-time UPS monitoring
- Schedule periodic UPS self-test
- Record event / data log
- Can also provide shut-down software for: IBM AIX; Free BSD; BSDI UNIX; BSD/OS; SCO Unixware; SCO Openserver; Sun Solaris; Compaq True64; HP UNIX; HP OpenVMS; HP Openview; SGI Irix MIPS; NCR UNIX
- Battery test log



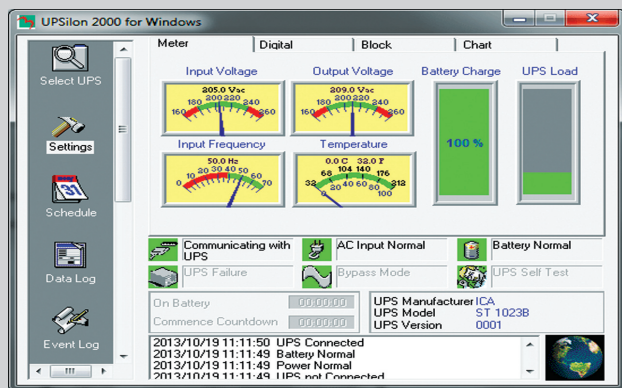
SNMP UDP

This is to configure the UDP port of the NetAgent and trap receiver. SNMP default port is 161; and Trap MIB is UDP162

AS-400 Card

The AS400 communication card provides contact closures for remote monitoring your UPS. To meet different application requirement, the AS400 card is capable of selection the status of the dry-contact signal (active close or active open) by setting jumper. This suitable applications are listed below:

- IBM Server, Personal PC & Workstations equipments
- Auto-controlled industrial equipment & communication applications



UPSilon 2000 UPS Monitoring software

For Microsoft Windows 95 / Microsoft Windows 98 / Microsoft Windows NT / Microsoft Windows 2000 / Microsoft Windows Me / Microsoft Windows XP / Novell NetWare, Linux, FreeBSD

Applications;

- Auto sending warning messages by e-mail.
- Auto detecting AC power failure and UPS battery low.
- Providing the UPS expected time setting of power supply.
- History data recording.
- Auto shutting down the system and turning off the UPS when AC power failed.
- Broadcasting the warning messages to all the workstations.
- Display the system shutdown countdown.
- Able to operate on server and workstation.
- Schedule on/off in a week
- Programmable UPS auto-testing period.
- UPS status reporting on server screen, including the input/output voltage, load, line frequency, temperature and so on.
- Local Network UPS monitoring through an Net Agent or SNMP Agent.

CHUPHOTIC Co.,Ltd.

949 Moo 9, Sumrong-Nue, Muang Samutprakarn, Samutprakarn 10270
Tel. : 02 186 3010 (Auto) Fax : 02 186 3018-19
www.chuphotic.com E-mail: ups@chuphotic.com

Authorized Dealer :

BACKUP TIME

รุ่น	เวลาการจ่ายไฟสำรอง		เวลาการชาร์จแบตเตอรี่ (ชั่วโมง)	กระแสไฟฟ้าที่ชาร์จแบตเตอรี่ (แอมป์)	แบตเตอรี่ที่อยู่ใน UPS (ขนาด x จำนวน)	แบตเตอรี่แบบขยายเวลาการจ่ายไฟสำรอง (Battery extension unit)	
	VA/W	นาที				ขนาด x จำนวน	แบตเตอรี่ต่อขยายเวลา x จำนวน
Venus Ultimate							
VNU1000	1000VA/900W	4 min.	3-4 hours	1.5A	[12V7.5Ah] x 3pcs	No	No
VNU1000L		10 min.	3-4 hours	3.5A	No	[12V7.5Ah] x 6pcs	[VNB 7506] x 1unit
		27 min.	3-4 hours	3.5A	No	[12V7.5Ah] x 12pcs	[VNB 7512] x 1unit
VNU1000RB	1000VA/900W	4 min.	3-4 hours	1.5A	[12V7.5Ah] x 3pcs	No	No
VNU1000RL		10 min.	3-4 hours	3.5A	No	[12V7.5Ah] x 6pcs	[VNB 7506R] x 1unit
		27 min.	3-4 hours	3.5A	No	[12V7.5Ah] x 12pcs	[VNB 7506R] x 2unit
VNU2000	2000VA/1800W	6 min.	3-4 hours	1.5A	[12V7.5Ah] x 8pcs	No	No
VNU2000L		15 min.	3-4 hours	3.5A	No	[12V7.5Ah] x 16pcs	[VNB 7516] x 1unit
		30 min.	3-4 hours	3.5A	No	[12V7.5Ah] x 32pcs	[VNB 7516] x 2unit
VNU2000LX		75 min.	4-6 hours	7A	No	[12V7.5Ah] x 48pcs	[VNB 7524] x 2unit
VNU2000R	2000VA/1800W	6 min.	3-4 hours	1.5A	No	[12V7.5Ah] x 8pcs	[VNB 7508R] x 1unit
VNU2000RL		15 min.	3-4 hours	3.5A	No	[12V7.5Ah] x 16pcs	[VNB 7508R] x 2unit
		30 min.	4-6 hours	3.5A	No	[12V7.5Ah] x 32pcs	[VNB 7516R] x 2unit
VNU2000RLX		75 min.	4-6 hours	7A	No	[12V7.5Ah] x 48pcs	[VNB 7516R] x 3unit
VNU3000	3000VA/2700W	5 min.	3-4 hours	1.5A	[12V7.5Ah] x 8pcs	No	No
VNU3000L		12 min.	3-4 hours	1.5A	No	[12V9.4Ah] x 16pcs	[VNB 9416] x 1unit
		26 min.	4-6 hours	3.5A	No	[12V9.4Ah] x 24pcs	[VNB 9424] x 1unit
VNU3000LX		60 min.	4-6 hours	7A	No	[12V9.4Ah] x 48pcs	[VNB 9424] x 2unit
VNU3000R	3000VA/2700W	5 min.	3-4 hours	1.5A	No	[12V7.5Ah] x 8pcs	[VNB 7508R] x 1unit
VNU3000RL		12 min.	3-4 hours	1.5A	No	[12V9.4Ah] x 16pcs	[VNB 9408R] x 2unit
		26 min.	4-6 hours	3.5A	No	[12V7.5Ah] x 32pcs	[VNB 7516R] x 2unit
VNU3000RX		60 min.	4-6 hours	7A	No	[12V9.4Ah] x 48pcs	[VNB 9416R] x 3unit
VNU5KP	5000VA/4500W	6 min.	3-4 hours	1.5A	[12V7.5Ah] x 20pcs	No	No
VNU5KPL		16 min.	3-4 hours	3.5A	No	[12V7.5Ah] x 40pcs	[VNB 7540] x 1unit
		58 min.	4-6 hours	3.5A	No	[12V7.5Ah] x 80pcs	[VNB 7540] x 2unit
VNU5KPLX		60 min.	4-6 hours	7A	No	[12V50Ah] x 20pcs	[VNB 5020] x 1unit
VNU5KPR	5000VA/4500W	6 min.	3-4 hours	1.5A	No	[12V7.5Ah] x 20pcs	[VNB 7520R] x 1unit
VNU5KPRL		16 min.	3-4 hours	3.5A	No	[12V7.5Ah] x 40pcs	[VNB 7520R] x 2unit
		35 min.	4-6 hours	3.5A	No	[12V7.5Ah] x 60pcs	[VNB 7520R] x 3unit
VNU5KPRX		72 min.	4-6 hours	7A	No	[12V7.5Ah] x 80pcs	[VNB 7520R] x 4unit
VNU6KP	6000VA/5400W	4 min.	3-4 hours	1.5A	[12V7.5Ah] x 20pcs	No	No
VNU6KPL		13 min.	3-4 hours	3.5A	No	[12V7.5Ah] x 40pcs	[VNB 7540] x 1unit
		37 min.	4-6 hours	3.5A	No	[12V7.5Ah] x 80pcs	[VNB 7540] x 2unit
VNU6KPLX		75 min.	4-6 hours	7A	No	[12V50Ah] x 20pcs	[VNB 5020] x 1unit
VNU6KPR	6000VA/5400W	4 min.	3-4 hours	1.5A	No	[12V7.5Ah] x 20pcs	[VNB 7520R] x 1unit
VNU6KPRL		13 min.	3-4 hours	3.5A	No	[12V7.5Ah] x 40pcs	[VNB 7520R] x 2unit
		29 min.	4-6 hours	3.5A	No	[12V7.5Ah] x 60pcs	[VNB 7520R] x 3unit
VNU6KPRXLX		63 min.	4-6 hours	7A	No	[12V7.5Ah] x 80pcs	[VNB 7520R] x 4unit
VNU10KP	10000VA/8000W	3 min.	3-4 hours	1.5A	[12V9.4Ah] x 20pcs	No	No
		10 min.	3-4 hours	3.5A	No	[12V9.4Ah] x 40pcs	[VNB 9440] x 1unit
VNU10KPL		28 min.	4-6 hours	3.5A	No	[12V9.4Ah] x 80pcs	[VNB 9440] x 2unit
		38 min.	4-6 hours	7A	No	[12V50Ah] x 20pcs	[VNB 5020] x 1unit
VNU10KPLX		60 min.	4-6 hours	7A	No	[12V65Ah] x 20pcs	[VNB 6520] x 1unit
VNU10KPR	10000VA/8000W	3 min.	3-4 hours	1.5A	No	[12V9.4Ah] x 20pcs	[VNB 9420R] x 1unit
VNU10KPRL		10 min.	3-4 hours	3.5A	No	[12V9.4Ah] x 40pcs	[VNB 9420R] x 1unit
		30 min.	4-6 hours	7A	No	[12V9.4Ah] x 60pcs	[VNB 9420R] x 2unit
VNU10KPRXLX		60 min.	4-6 hours	7A	No	[12V9.4Ah] x 80pcs	[VNB 9420R] x 3unit

*R = Rackmount UPS **L = Long backup UPS

*All above specification may be change without prior notice.

Battery extension unit	ชนิดแบตเตอรี่	แรงดันแบตเตอรี่	กระแสแบตเตอรี่	จำนวนแบตเตอรี่	ขนาด/น้ำหนัก ตู้แบตเตอรี่
VNB 7506C	SLA 12V 7.5Ah	36 V	15 Ah	3pcs x 2 String	145 x 220 x 400 mm. / 15.5 kg
VNB 7506RC	SLA 12V 7.5Ah	36 V	15 Ah	3pcs x 2 String	483 x 450 x 2U mm. / 18.5 kg
VNB 7516F	SLA 12V 7.5Ah	96 V	15 Ah	8pcs x 2 String	145 x 220 x 400 mm. / 38.0 kg
VNB 9416F	SLA 12V 9.4Ah	96 V	18.8 Ah	8pcs x 2 String	145 x 220 x 400 mm. / 46.8 kg
VNB 7508RF	SLA 12V 7.5Ah	96 V	7.5 Ah	8 pcs	483 x 450 x 2U mm. / 23.0 kg
VNB 9408RF	SLA 12V 9.4Ah	96 V	9.4 Ah	8 pcs	483 x 450 x 2U mm. / 27.4 kg
VNB 7516RF	SLA 12V 7.5Ah	96 V	15 Ah	8pcs x 2 String	483 x 650 x 3U mm. / 46.0 kg
VNB 9616RF	SLA 12V 9.6Ah	96 V	19.2 Ah	8pcs x 2 String	483 x 650 x 3U mm. / 54.8 kg
VNB 7540I	SLA 12V 7.5Ah	240 V	15 Ah	20pcs x 2 String	260 x 717 x 560 mm. / 65.0 kg
VNB 9440I	SLA 12V 9.4Ah	240 V	18.8 Ah	20pcs x 2 String	260 x 717 x 560 mm. / 76.0 kg
VNB 5020I	SLA 12V 50Ah	240 V	50 Ah	20 pcs	N/A
VNB 6520I	SLA 12V 65Ah	240 V	65 Ah	20 pcs	N/A
VNB 7520RI	SLA 12V 7.5Ah	240 V	7.5 Ah	20 pcs	483 x 650 x 3U mm. / 65.0 kg
VNB 9420RI	SLA 12V 9.4Ah	240 V	9.4 Ah	20 pcs	483 x 650 x 3U mm. / 76.0 kg