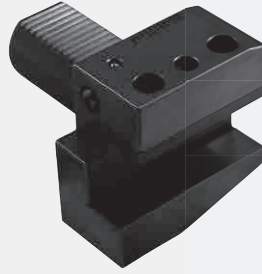


車銑複合機刀座系統

Turning and Milling Machine Driven Tooling System

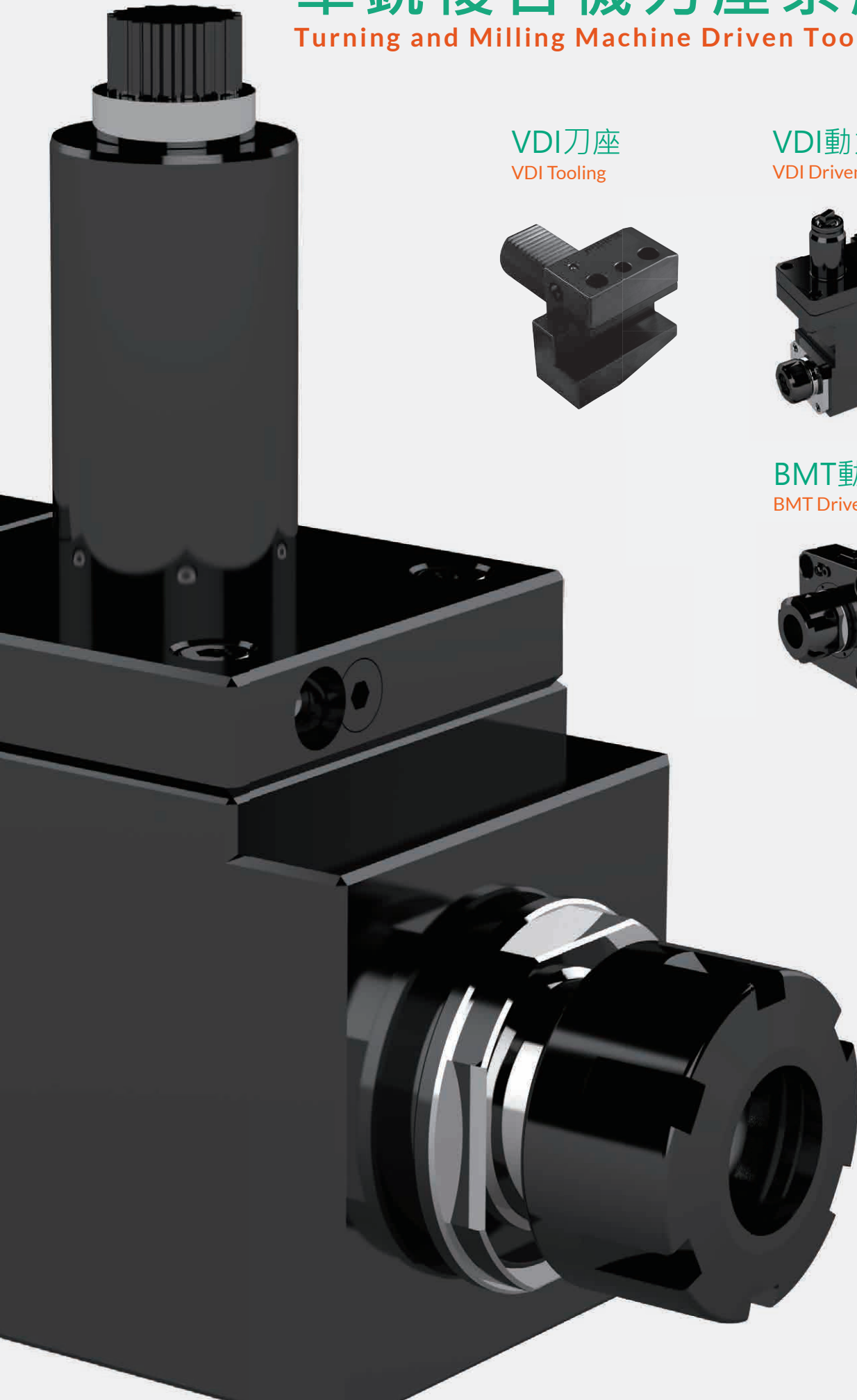
VDI刀座
VDI Tooling



VDI動力刀座
VDI Driven Tooling



BMT動力刀座
BMT Driven Tooling



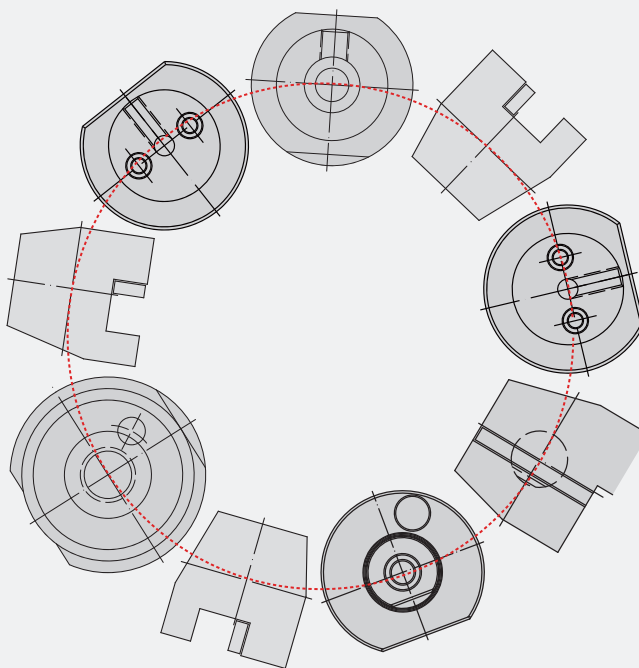
車銑複合機

Turning and Milling Machine(DIN 69880 系列)

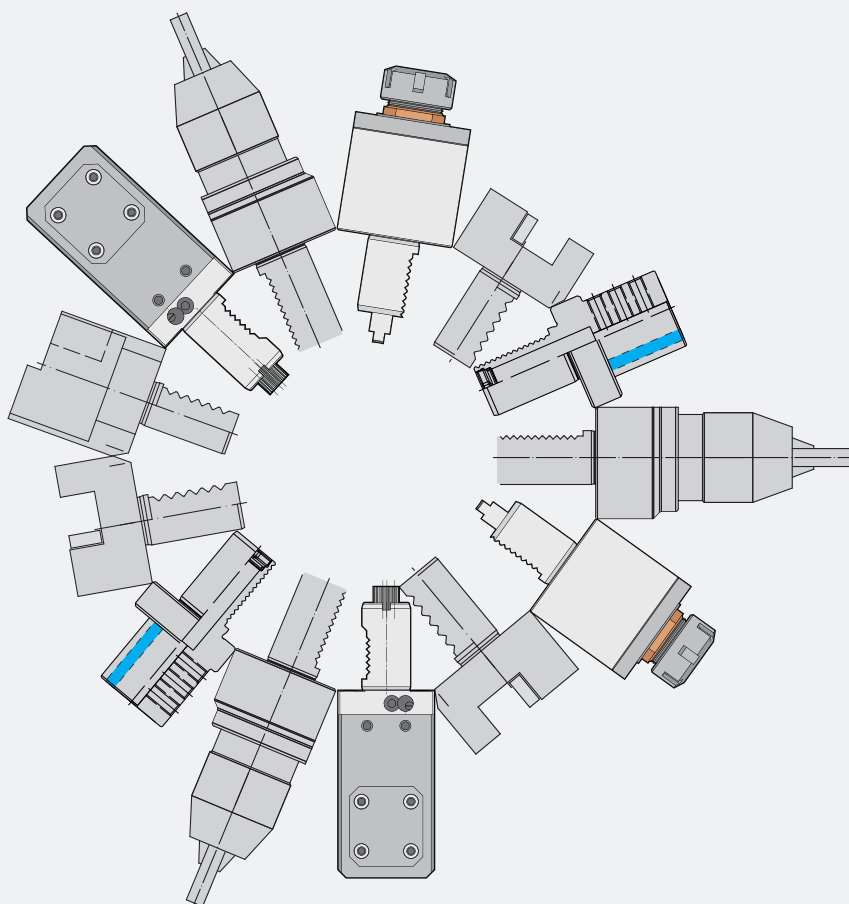
依入刀方向

Insert Toolholder into Turret Direction

軸向入刀
(axial),(axial turret)



徑向入刀
(radial),(radial turret)



VDI 動力刀座系列

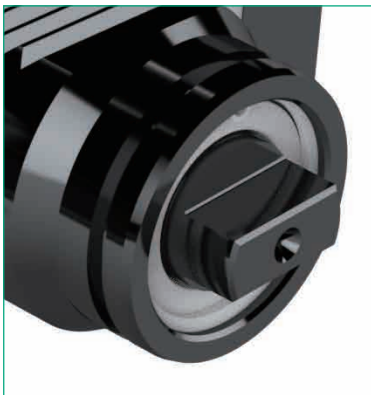
Driven Tooling System

- 研磨級齒輪-高精度、低噪音、低溫升
- 提供客製化服務
- Grinding gears - high precision, low noise, low temperature rise.
- Provide customized service.

傳動方式

Driven Method

-DIN1809



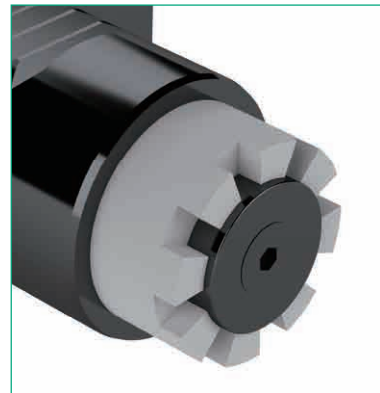
-DIN5480

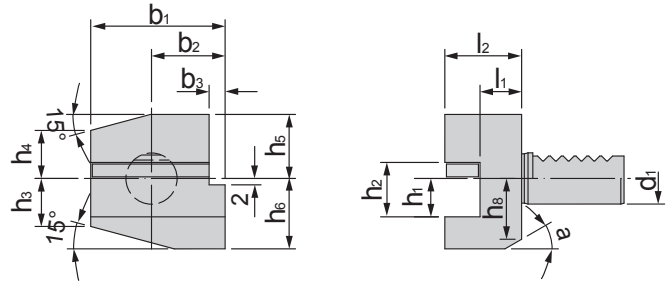


-DIN5482



-TOME



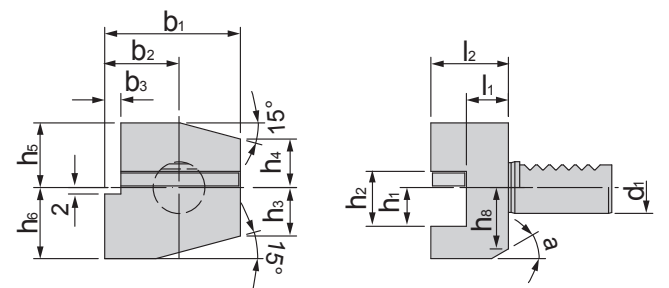


特點 Feature

- 徑向 - 右撇
- 短刀架
- 附出水孔

- Radial - right handed
- Short tool holder.
- With coolant hole.

| 規格 Spec. | 尺寸 Size d1 x h2 x l2 | d1 | b1 | b2 | b3 | h1 | h2 | h3 | h4 | h5 | h6 | h8 | l1 | l2 | a | 重量 (KGS) Weight |
|-----------------|----------------------|----|-----|------|------|----|----|----|----|------|----|----|----|----|-----|-----------------|
| 150.B1.30.20.40 | 30 x 20 x 40 | 30 | 70 | 35 | 10 | 20 | 29 | 26 | 22 | 28 | 38 | 30 | 22 | 40 | 25° | 1.38 |
| 150.B1.30.20.60 | 30 x 20 x 60 | 30 | 70 | 35 | 10 | 20 | 29 | 26 | 22 | 28 | 38 | 30 | 42 | 60 | 25° | 2.02 |
| 150.B1.40.25.44 | 40 x 25 x 44 | 40 | 85 | 42.5 | 12.5 | 25 | 34 | 35 | 30 | 32.5 | 48 | - | 22 | 44 | - | 2.36 |
| 150.B1.50.32.55 | 50 x 32 x 55 | 50 | 100 | 50 | 16 | 32 | 41 | 42 | 35 | 35 | 60 | - | 30 | 55 | - | 4.14 |



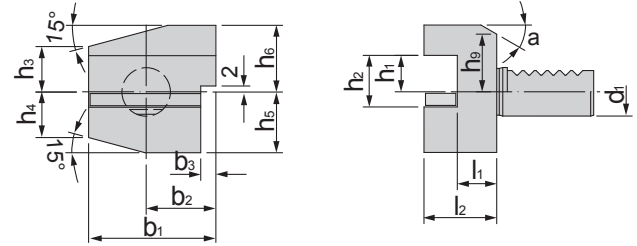
特點 Feature

- 徑向 - 左撇
- 短刀架
- 附出水孔

- Radial - Left handed
- Short tool holder.
- With coolant hole

| 規格 Spec. | 尺寸 Size d1 x h2 x l2 | d1 | b1 | b2 | b3 | h1 | h2 | h3 | h4 | h5 | h6 | h8 | l1 | l2 | a | 重量 (KGS) Weight |
|-----------------|----------------------|----|-----|------|------|----|----|----|----|------|----|----|----|----|-----|-----------------|
| 150.B2.30.20.40 | 30 x 20 x 40 | 30 | 70 | 35 | 10 | 20 | 29 | 26 | 22 | 28 | 38 | 30 | 22 | 40 | 25° | 1.40 |
| 150.B2.30.20.60 | 30 x 20 x 60 | 30 | 70 | 35 | 10 | 20 | 29 | 26 | 22 | 28 | 38 | 30 | 42 | 60 | 25° | 2.02 |
| 150.B2.40.25.44 | 40 x 25 x 44 | 40 | 85 | 42.5 | 12.5 | 25 | 34 | 35 | 30 | 32.5 | 48 | - | 22 | 44 | - | 2.38 |
| 150.B2.50.32.55 | 50 x 32 x 55 | 50 | 100 | 50 | 16 | 32 | 41 | 42 | 35 | 35 | 60 | - | 30 | 55 | - | - |

• 長度單位 Unit of Length (mm)

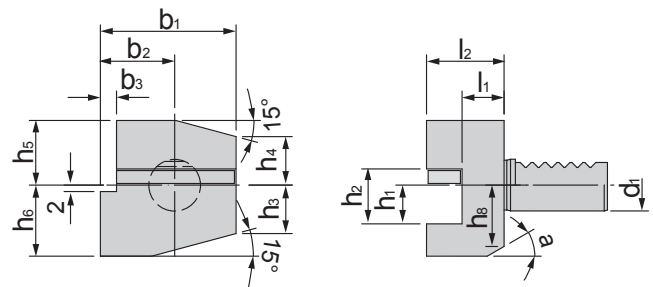
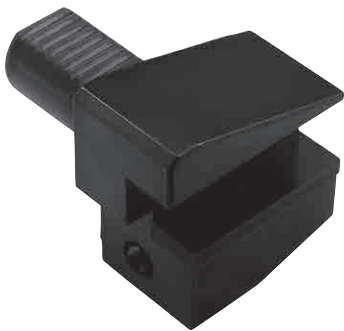


特點 Feature

- 徑向 - 右撇
- 短刀架
- 刀片向下
- 附出水孔

- Radial - right handed
- Short tool holder.
- Turning insert downwards.
- With coolant hole.

| 規格 Spec. | 尺寸 Size $d_1 \times h_1 \times l_2$ | d_1 | b_1 | b_2 | b_3 | h_1 | h_2 | h_3 | h_4 | h_6 | h_7 | h_8 | l_1 | l_2 | a | 重量 (KGS) Weight |
|-----------------|--|-------|-------|-------|-------|-------|-------|-------|-------|-------|-------|-------|-------|-------|-----|--------------------|
| 150.B3.30.20.40 | 30 x 20 x 40 | 30 | 70 | 35 | 10 | 20 | 29 | 26 | 22 | 38 | 35 | 28 | 22 | 40 | 25° | 1.42 |
| 150.B3.30.20.60 | 30 x 20 x 60 | 30 | 70 | 35 | 10 | 20 | 29 | 26 | 22 | 38 | 35 | 28 | 42 | 60 | 25° | 2.1 |
| 150.B3.40.25.44 | 40 x 25 x 44 | 40 | 85 | 42.5 | 12.5 | 25 | 34 | 35 | 30 | 48 | 42.5 | - | 22 | 44 | - | 2.52 |
| 150.B3.50.32.55 | 50 x 32 x 55 | 50 | 100 | 50 | 16 | 32 | 41 | 42 | 35 | 60 | 50 | - | 30 | 55 | - | - |



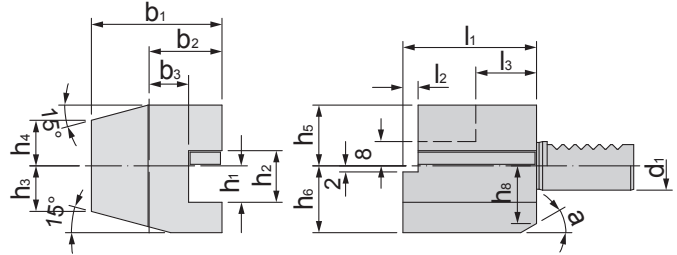
特點 Feature

- 徑向 - 左撇
- 短刀架
- 刀片向下
- 附出水孔

- Radial - left handed
- Short tool holder.
- Turning insert downwards.
- With coolant hole.

| 規格 Spec. | 尺寸 Size $d_1 \times h_1 \times l_2$ | d_1 | b_1 | b_2 | b_3 | h_1 | h_2 | h_3 | h_4 | h_6 | h_7 | h_8 | l_1 | l_2 | a | 重量 (KGS) Weight |
|-----------------|--|-------|-------|-------|-------|-------|-------|-------|-------|-------|-------|-------|-------|-------|-----|--------------------|
| 150.B4.30.20.40 | 30 x 20 x 40 | 30 | 70 | 35 | 10 | 20 | 29 | 26 | 22 | 38 | 35 | 28 | 22 | 40 | 25° | - |
| 150.B4.30.20.60 | 30 x 20 x 60 | 30 | 70 | 35 | 10 | 20 | 29 | 26 | 22 | 38 | 35 | 28 | 42 | 60 | 25° | - |
| 150.B4.40.25.44 | 40 x 25 x 44 | 40 | 85 | 42.5 | 12.5 | 25 | 34 | 35 | 30 | 48 | 42.5 | - | 22 | 44 | - | 2.52 |
| 150.B4.50.32.55 | 50 x 32 x 55 | 50 | 100 | 50 | 16 | 32 | 41 | 42 | 35 | 60 | 50 | - | 30 | 55 | - | - |

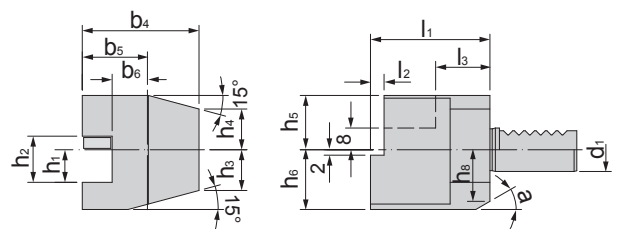
• 長度單位 Unit of Length (mm)



特點 Feature

- 軸向 - 右撇
- 短刀架
- 附出水孔
- Axial - right handed
- Short tool holder.
- With coolant hole.

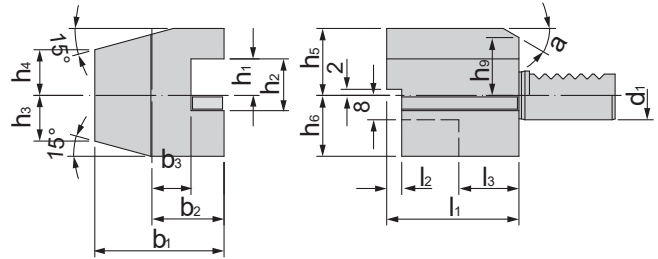
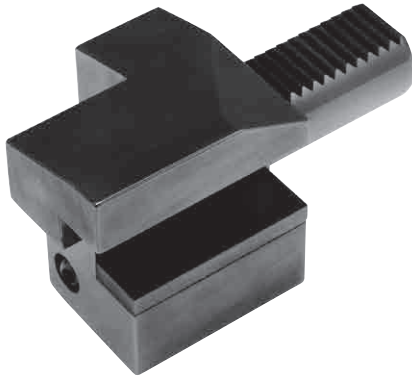
| 規格 Spec. | 尺寸 Size $d_1 \times h_1$ | d_1 | b_1 | b_2 | b_3 | h_1 | h_2 | h_3 | h_4 | h_5 | h_6 | h_8 | l_1 | l_2 | l_3 | a | 重量 (KGS) Weight |
|--------------|--------------------------|-------|-------|-------|-------|-------|-------|-------|-------|-------|-------|-------|-------|-------|-------|-----|-----------------|
| 150.C1.30.20 | 30 x 20 | 30 | 70 | 35 | 17 | 20 | 29 | 26 | 22 | 28 | 38 | 30 | 70 | 10 | 30 | 25° | 1.90 |
| 150.C1.40.25 | 40 x 25 | 40 | 85 | 42.5 | 21 | 25 | 34 | 35 | 30 | 32.5 | 48 | - | 85 | 12.5 | 30 | - | 3.38 |
| 150.C1.50.32 | 50 x 32 | 50 | 100 | 50 | 26 | 32 | 41 | 42 | 35 | 35 | 60 | - | 100 | 16 | 40 | - | - |



特點 Feature

- 軸向 - 左撇
- 短刀架
- 附出水孔
- Axial - left handed
- Short tool holder.
- With coolant hole.

| 規格 Spec. | 尺寸 Size $d_1 \times h_1$ | d_1 | b_4 | b_5 | b_6 | h_1 | h_2 | h_3 | h_4 | h_5 | h_6 | h_8 | l_1 | l_2 | l_3 | a | 重量 (KGS) Weight |
|--------------|--------------------------|-------|-------|-------|-------|-------|-------|-------|-------|-------|-------|-------|-------|-------|-------|-----|-----------------|
| 150.C2.30.20 | 30 x 20 | 30 | 76 | 41 | 23 | 20 | 29 | 26 | 22 | 28 | 38 | 30 | 70 | 10 | 30 | 25° | 2.06 |
| 150.C2.40.25 | 40 x 25 | 40 | 90 | 47.5 | 25.5 | 25 | 34 | 35 | 30 | 32.5 | 48 | - | 85 | 12.5 | 30 | - | 3.64 |
| 150.C2.50.32 | 50 x 32 | 50 | 105 | 55 | 30.5 | 32 | 41 | 42 | 35 | 35 | 60 | - | 100 | 16 | 40 | - | - |

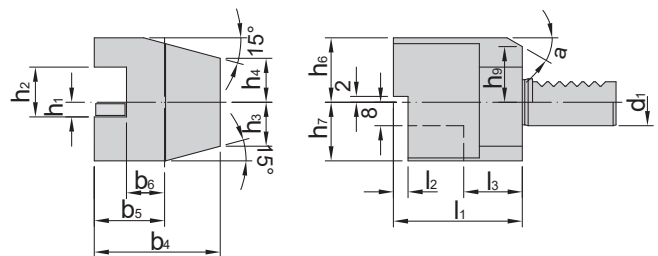


特點 Feature

- 軸向 - 右撇
- 短刀架
- 刀片向下
- 附出水孔

- Axial - right handed
- Short tool holder.
- Turning insert downwards.
- With coolant hole.

| 規格 Spec. | 尺寸 Size $d_1 \times h_1$ | d_1 | b_1 | b_2 | b_3 | h_1 | h_2 | h_3 | h_4 | h_6 | h_7 | h_9 | l_1 | l_2 | l_3 | a | 重量 (KGS) Weight |
|--------------|--------------------------|-------|-------|-------|-------|-------|-------|-------|-------|-------|-------|-------|-------|-------|-------|-----|-----------------|
| 150.C3.30.20 | 30 x 20 | 30 | 70 | 35 | 17 | 20 | 29 | 26 | 22 | 28 | 35 | 28 | 70 | 10 | 30 | 25° | 1.96 |
| 150.C3.40.25 | 40 x 25 | 40 | 85 | 42.5 | 21 | 25 | 34 | 35 | 30 | 48 | 42.5 | - | 85 | 12.5 | 30 | - | 3.54 |
| 150.C3.50.32 | 50 x 32 | 50 | 100 | 50 | 26 | 32 | 41 | 42 | 35 | 60 | 50 | - | 100 | 16 | 40 | - | - |



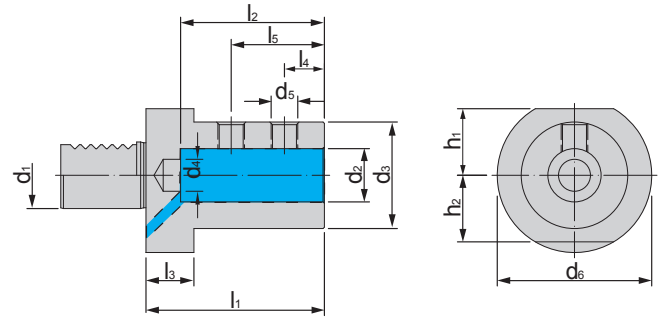
特點 Feature

- 軸向 - 左撇
- 短刀架
- 刀片向下
- 附出水孔

- Axial - left handed
- Short tool holder.
- Turning insert downwards.
- With coolant hole.

| 規格 Spec. | 尺寸 Size $d_1 \times h_1$ | d_1 | b_4 | b_5 | b_6 | h_1 | h_2 | h_3 | h_4 | h_6 | h_7 | h_9 | l_1 | l_2 | l_3 | a | 重量 (KGS) Weight |
|--------------|--------------------------|-------|-------|-------|-------|-------|-------|-------|-------|-------|-------|-------|-------|-------|-------|-----|-----------------|
| 150.C4.30.20 | 30 x 20 | 30 | 76 | 41 | 23 | 20 | 29 | 26 | 22 | 38 | 35 | 28 | 70 | 10 | 30 | 25° | 2.2 |
| 150.C4.40.25 | 40 x 25 | 40 | 90 | 47.5 | 25.5 | 25 | 34 | 35 | 30 | 48 | 42.5 | - | 85 | 12.5 | 30 | - | 3.86 |
| 150.C4.50.32 | 50 x 32 | 50 | 105 | 55 | 30.5 | 32 | 41 | 42 | 35 | 60 | 50 | - | 100 | 16 | 40 | - | - |

• 長度單位 Unit of Length (mm)



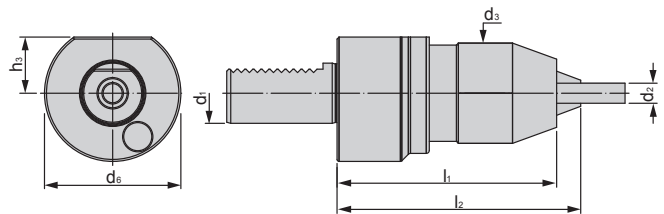
特點 Feature

- 內徑公差：H5
- 中心出水

- Tolerance of internal hole: H5.
- With center coolant.

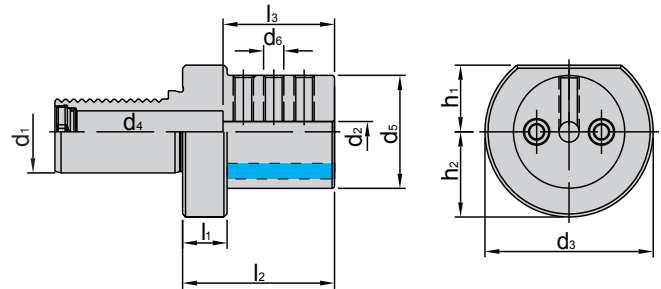
| 規格 Spec. | 尺寸 Size $d_1 \times d_2$ | d_1 | d_2 | d_3 | d_4 | d_5 | d_6 | h_1 | h_2 | l_1 | l_2 | l_3 | l_4 | l_5 | 重量 (KGS) Weight |
|--------------|-----------------------------|-------|-------|-------|-------|-------|-------|-------|-------|-------|-------|-------|-------|-------|--------------------|
| 150.E1.30.20 | 30 x 20 | 30 | 20 | 40 | 12 | M10x1 | 68 | 28 | 30 | 67 | 54 | 22 | 15 | 35 | 1.28 |
| 150.E1.30.25 | 30 x 25 | 30 | 25 | 45 | 17 | M12x1 | 68 | 28 | 30 | 71 | 59 | 22 | 17 | 40 | 1.34 |
| 150.E1.30.32 | 30 x 32 | 30 | 32 | 52 | 24 | M12x1 | 68 | 28 | 30 | 75 | 63 | 22 | 17 | 44 | 1.43 |
| 150.E1.30.40 | 30 x 40 | 30 | 40 | 65 | 24 | M16x1 | 68 | 28 | 30 | 90 | 73 | 22 | 22 | 50 | - |
| 150.E1.40.18 | 40 x 18 | 40 | 18 | 40 | 12 | M10x1 | 83 | 32.5 | - | 67 | 54 | 22 | 15 | 35 | - |
| 150.E1.40.20 | 40 x 20 | 40 | 20 | 40 | 12 | M10x1 | 83 | 32.5 | - | 67 | 54 | 22 | 15 | 35 | 1.84 |
| 150.E1.40.25 | 40 x 25 | 40 | 25 | 45 | 17 | M12x1 | 83 | 32.5 | - | 75 | 59 | 22 | 17 | 40 | 1.98 |
| 150.E1.40.32 | 40 x 32 | 40 | 32 | 52 | 24 | M12x1 | 83 | 32.5 | - | 75 | 63 | 22 | 17 | 44 | 1.98 |
| 150.E1.40.40 | 40 x 40 | 40 | 40 | 65 | 24 | M16x1 | 83 | 32.5 | - | 90 | 73 | 22 | 22 | 50 | 2.58 |
| 150.E1.40.50 | 40 x 50 | 40 | 50 | 75 | 32 | M16x1 | 83 | 32.5 | - | 100 | 83 | 22 | 24 | 60 | 3.54 |
| 150.E1.50.20 | 50 x 20 | 50 | 20 | 40 | 12 | M10x1 | 98 | 35 | - | 67 | 54 | 30 | 15 | 35 | - |
| 150.E1.50.25 | 50 x 25 | 50 | 25 | 45 | 17 | M12x1 | 98 | 35 | - | 80 | 59 | 30 | 17 | 40 | - |
| 150.E1.50.32 | 50 x 32 | 50 | 32 | 52 | 24 | M12x1 | 98 | 35 | - | 80 | 63 | 30 | 17 | 44 | - |
| 150.E1.50.40 | 50 x 40 | 50 | 40 | 65 | 32 | M16x1 | 98 | 35 | - | 90 | 73 | 30 | 22 | 50 | - |
| 150.E1.50.50 | 50 x 50 | 50 | 50 | 75 | 42 | M16x1 | 98 | 35 | - | 100 | 83 | 30 | 24 | 60 | - |

VDI



| 規格 Spec. | 尺寸 Size | d_1 | d_2 | d_3 | d_6 | h_3 | l_1 | l_2 | 重量 (KGS) Weight |
|---------------|------------|-------|-------|-------|-------|-------|-------|-------|--------------------|
| 150.30.669.08 | 30 x SPU8 | 30 | 0.5-8 | 36 | 68 | 28 | 68 | 71 | - |
| 150.30.669.13 | 30 x SPU13 | 30 | 1-13 | 50 | 68 | 28 | 90 | 96 | 2.32 |
| 150.30.669.16 | 30 x SPU16 | 30 | 3-16 | 57 | 68 | 28 | 90 | 101 | 2.46 |
| 150.40.669.08 | 40 x SPU8 | 40 | 0.5-8 | 36 | 83 | 32.5 | 68 | 71 | 1.84 |
| 150.40.669.13 | 40 x SPU13 | 40 | 1-13 | 50 | 83 | 32.5 | 90 | 96 | 2.46 |
| 150.40.669.16 | 40 x SPU16 | 40 | 3-16 | 57 | 83 | 32.5 | 90 | 101 | 3.12 |
| 150.50.669.13 | 50 x SPU13 | 50 | 1-13 | 57 | 98 | 35 | 90 | 96 | - |
| 150.50.669.16 | 50 x SPU16 | 50 | 3-16 | 57 | 98 | 35 | 90 | 101 | - |

• 長度單位 Unit of Length (mm)



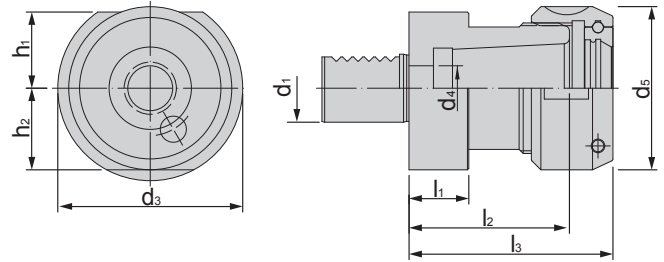
特點 Feature

- 內徑公差：H5
- 中心出水

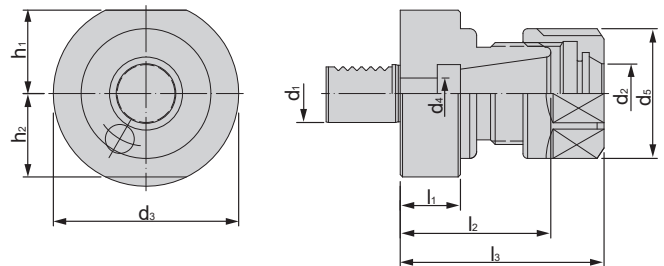
- Tolerance of internal hole: H5.
- With center coolant.

| 規格 Spec. | 尺寸 Size $d_1 \times d_2$ | d_1 | d_2 | d_3 | d_4 | d_5 | d_6 | h_1 | h_2 | l_1 | l_2 | l_3 | 重量 (KGS) Weight |
|--------------|-----------------------------|-------|-------|-------|-------|-------|-------|-------|-------|-------|-------|-------|--------------------|
| 150.E2.30.08 | 30 x 8 | 30 | 8 | 68 | 6 | 55 | M6 | 28 | 30 | 22 | 60 | 51 | 1.60 |
| 150.E2.30.10 | 30 x 10 | 30 | 10 | 68 | 8 | 55 | M6 | 28 | 30 | 22 | 60 | 51 | 1.59 |
| 150.E2.30.12 | 30 x 12 | 30 | 12 | 68 | 10 | 55 | M8 | 28 | 30 | 22 | 60 | 51 | 1.57 |
| 150.E2.30.14 | 30 x 14 | 30 | 14 | 68 | 10 | 55 | M8 | 28 | 30 | 22 | 60 | 52 | 1.82 |
| 150.E2.30.16 | 30 x 16 | 30 | 16 | 68 | 12 | 55 | M8 | 28 | 30 | 22 | 60 | 51 | 1.48 |
| 150.E2.30.18 | 30 x 18 | 30 | 18 | 68 | 10 | 55 | M8 | 28 | 30 | 22 | 60 | 52 | - |
| 150.E2.30.20 | 30 x 20 | 30 | 20 | 68 | 16 | 55 | M8 | 28 | 30 | 22 | 60 | 51 | 1.44 |
| 150.E2.30.25 | 30 x 25 | 30 | 25 | 68 | 16 | 55 | M8 | 28 | 30 | 22 | 60 | 51 | 1.36 |
| 150.E2.30.32 | 30 x 32 | 30 | 32 | 68 | 16 | 68 | M8 | 28 | 30 | 22 | 75 | 51 | 1.88 |
| 150.E2.40.10 | 40 x 10 | 40 | 10 | 83 | 8 | 55 | M10 | 32.5 | - | 22 | 75 | 67 | - |
| 150.E2.40.12 | 40 x 12 | 40 | 12 | 83 | 10 | 55 | M10 | 32.5 | - | 22 | 75 | 61 | 2.44 |
| 150.E2.40.14 | 40 x 14 | 40 | 14 | 83 | 10 | 55 | M8 | 32.5 | - | 22 | 75 | 63 | - |
| 150.E2.40.16 | 40 x 16 | 40 | 16 | 83 | 12 | 55 | M10 | 32.5 | - | 22 | 75 | 61 | 2.30 |
| 150.E2.40.18 | 40 x 18 | 40 | 18 | 83 | 10 | 55 | M8 | 32.5 | - | 22 | 75 | 62 | - |
| 150.E2.40.20 | 40 x 20 | 40 | 20 | 83 | 16 | 55 | M10 | 32.5 | - | 22 | 75 | 61 | 2.25 |
| 150.E2.40.25 | 40 x 25 | 40 | 25 | 83 | 20.5 | 55 | M10 | 32.5 | - | 22 | 75 | 61 | 2.23 |
| 150.E2.40.32 | 40 x 32 | 40 | 32 | 83 | 20.5 | 83 | M10 | 32.5 | - | 22 | 75 | 61 | 3.20 |
| 150.E2.40.40 | 40 x 40 | 40 | 40 | 83 | 20.5 | 83 | M10 | 32.5 | - | 22 | 75 | 75 | 3.64 |
| 150.E2.40.50 | 40 x 50 | 40 | 50 | 83 | 20.5 | 83 | M12 | 32.5 | - | 22 | 75 | 75 | 1.86 |
| 150.E2.50.12 | 50 x 12 | 50 | 12 | 98 | 10 | 68 | M8 | 35 | - | 30 | 90 | 76 | - |
| 150.E2.50.16 | 50 x 16 | 50 | 16 | 98 | 12 | 68 | M10 | 35 | - | 30 | 90 | 76 | - |
| 150.E2.50.20 | 50 x 20 | 50 | 20 | 98 | 16 | 68 | M12 | 35 | - | 30 | 90 | 76 | - |
| 150.E2.50.25 | 50 x 25 | 50 | 25 | 98 | 20 | 68 | M12 | 35 | - | 30 | 90 | 76 | - |
| 150.E2.50.32 | 50 x 32 | 50 | 32 | 98 | 25 | 68 | M12 | 35 | - | 30 | 90 | 76 | - |
| 150.E2.50.40 | 50 x 40 | 50 | 40 | 98 | 25 | 98 | M12 | 35 | - | 30 | 90 | 76 | - |
| 150.E2.50.50 | 50 x 50 | 50 | 50 | 98 | 25 | 98 | M12 | 35 | - | 30 | 100 | 86 | 5.24 |

• 長度單位 Unit of Length (mm)



| 規格 Spec. | 尺寸 Size | d ₁ | d ₃ | d ₄ min | d ₅ | h ₁ | h ₂ | l ₁ | l ₂ | l ₃ | 重量 (KGS) Weight |
|--------------|------------|----------------|----------------|--------------------|----------------|----------------|----------------|----------------|----------------|----------------|-----------------|
| 150.E3.30.25 | 30 x EOC25 | 30 | 68 | 16.5 | 60 | 28 | 30 | 22 | 59 | 75 | - |
| 150.E3.40.25 | 40 x EOC25 | 40 | 83 | 20.5 | 60 | 32.5 | - | 22 | 59 | 75 | - |
| 150.E3.40.32 | 40 x EOC32 | 40 | 83 | 20.5 | 72 | 32.5 | - | 22 | 73 | 90 | 2.6 |
| 150.E3.50.25 | 50 x EOC25 | 50 | 98 | 25.5 | 60 | 35 | - | 30 | 59 | 75 | - |
| 150.E3.50.32 | 50 x EOC32 | 50 | 98 | 25.5 | 72 | 35 | - | 30 | 73 | 90 | - |



特點 Feature

- 搭配 DIN-15488 系列彈性筒夾，可夾持各直柄刀具
- 使用包固得螺帽提高剛性
- 無風阻螺帽搭配使用，夾持力大、穩定性與精度提高

- It can match with ER Spring Collet (DIN-15488 standard) and can clamp all kinds of straight shank tools.
- Rigidity can be raised by using ER Power Good Clamping Nut.
- Matching with non wind resistance nut can raise clamping power, stability and precision.

| 規格 Spec. | 尺寸 Size | d ₁ | d ₂ ER | d ₃ | d ₄ min | d ₅ | h ₁ | h ₂ | l ₁ | l ₂ | l ₃ | 重量 (KGS) Weight |
|--------------|-----------|----------------|-------------------|----------------|--------------------|----------------|----------------|----------------|----------------|----------------|----------------|-----------------|
| 150.E4.30.25 | 30 x ER25 | 30 | 25 | 68 | 16.5 | 42 | 28 | 30 | 22 | 45 | 57 | 1.08 |
| 150.E4.30.32 | 30 x ER32 | 30 | 32 | 68 | 16.5 | 50 | 28 | 30 | 22 | 49 | 62 | - |
| 150.E4.30.40 | 30 x ER40 | 30 | 40 | 68 | 16.5 | 63 | 28 | 30 | 22 | 56 | 70 | - |
| 150.E4.40.25 | 40 x ER25 | 40 | 25 | 83 | 20.5 | 42 | 32.5 | - | 22 | 45 | 57 | 1.66 |
| 150.E4.40.32 | 40 x ER32 | 40 | 32 | 83 | 20.5 | 50 | 32.5 | - | 22 | 49.5 | 62 | 1.77 |
| 150.E4.40.40 | 40 x ER40 | 40 | 40 | 83 | 20.5 | 63 | 32.5 | - | 22 | 61 | 75 | 2.10 |
| 150.E4.50.40 | 50 x ER40 | 50 | 40 | 98 | 20.5 | 63 | 35 | - | 30 | 61 | 75 | - |

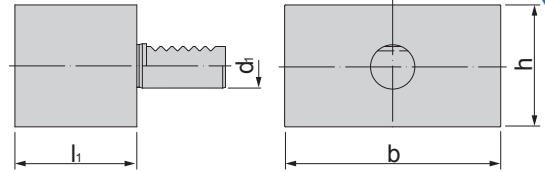
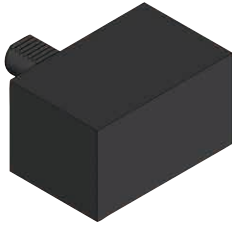
• 長度單位 Unit of Length (mm)



VDI 素材 VDI BLANK

DIN ISO 10889-2

DIN
ISO
10889

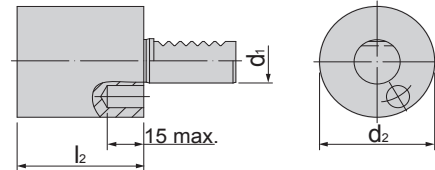


| 規格 Spec. | 尺寸 Size $d_1 \times l_1$ | d_1 | l_1 | b | h | 重量 (KGS) Weight |
|---------------|-----------------------------|-------|-------|-----|-----|--------------------|
| 150.A1.30.85 | 30 x 85 | 30 | 85 | 130 | 76 | - |
| 150.A1.40.100 | 40 x 100 | 40 | 100 | 151 | 96 | - |



VDI 素材 VDI BLANK

DIN ISO 10889-2



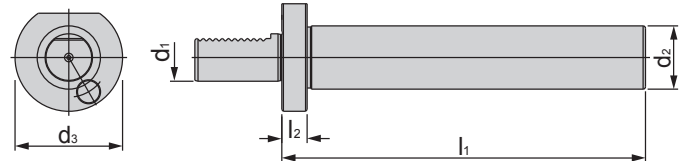
| 規格 Spec. | 尺寸 Size $d_1 \times l_2$ | d_1 | d_2 | l_2 | 重量 (KGS) Weight |
|---------------|-----------------------------|-------|-------|-------|--------------------|
| 150.A2.30.100 | 30 x 100 | 30 | 68 | 100 | - |
| 150.A2.30.240 | 30 x 240 | 30 | 68 | 240 | - |
| 150.A2.40.120 | 40 x 120 | 40 | 83 | 120 | - |
| 150.A2.40.200 | 40 x 200 | 40 | 83 | 200 | - |
| 150.A2.40.320 | 40 x 320 | 40 | 83 | 320 | - |

VDI



VDI 主軸檢測棒 VDI SPINDLE MASTER BAR

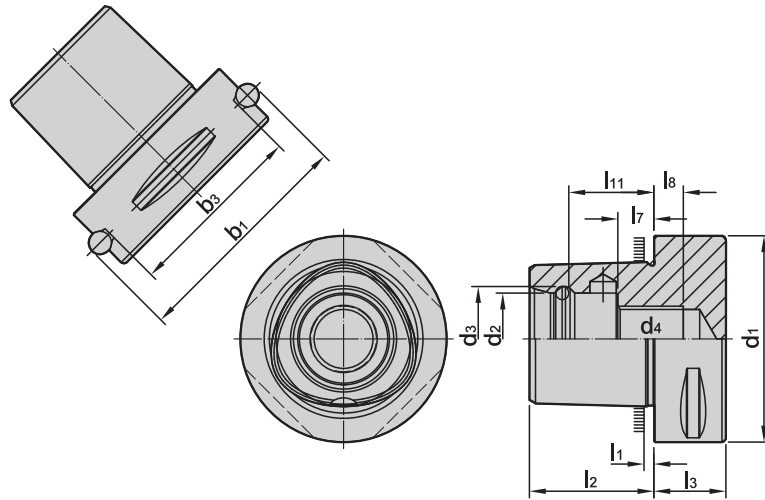
TYPE BC



| | | |
|--|-------------------------|---------|
| | 錐度精度 Taper Precision | AT2 |
| | 真圓度 Roundness | 0.001mm |
| | 表面粗造度 Surface Roughness | Ra<0.4 |
| | 同心度 Concentricity | 0.005mm |

| 規格 Spec. | 尺寸 Size $d_1 \times d_2 \times l_1$ | l_1 | l_2 | d_1 | d_2 | d_3 | 重量 (KGS) Weight |
|---------------|--|-------|-------|-------|-------|-------|--------------------|
| 150.30.40.230 | 30 x 40 x 230 | 230 | 16 | 30 | 40 | 68 | 4.30 |
| 150.40.40.200 | 40 x 40 x 200 | 200 | 16 | 40 | 40 | 83 | 4.42 |
| 150.50.40.200 | 50 x 40 x 200 | 200 | 15 | 50 | 40 | 98 | 5.22 |

• 長度單位 Unit of Length (mm)



| 規格 Spec. | b ₁ ±0.1 | b ₃ ±0.1 | d ₁ ±0.1 | d ₂ +0.1 -0.05 | d ₃ ±0.05 | d ₄ | l ₁ | l ₂ ±0.1 | l ₃ Min | l ₇ ±0.15 | l ₈ Min | l ₁₁ ±0.1 |
|-------------|------------------------|------------------------|------------------------|---------------------------------|-------------------------|----------------|----------------|------------------------|-----------------------|-------------------------|-----------------------|-------------------------|
| PSC32 | 39 | 27.9 | 32 | 15 | 16.5 | M12x1.5P | 2.5 | 19 | 15 | 6 | 6 | 13.5 |
| PSC40 | 46 | 34.9 | 40 | 18 | 20 | M14x1.5P | 2.5 | 24 | 20 | 9 | 6 | 17.5 |
| PSC50 | 59.3 | 44 | 50 | 21 | 24 | M16x1.5P | 3 | 30 | 20 | 10 | 7 | 22 |
| PSC63 | 70.7 | 55.4 | 63 | 28 | 32 | M20x2.0P | 3 | 38 | 22 | 11 | 9 | 26 |
| PSC80 | 86 | 70.7 | 80 | 32 | 38 | M20x2.0P | 3 | 48 | 30 | 20 | 0 | 34 |
| PSC80X | 110 | 88.3 | 10 | 32 | 38 | M20x2.0P | 3 | 48 | 32 | 20 | 0 | 34 |

1. 錐度精度 : < AT3
2. 硬度 : HRC 56°
3. 滲碳深度 > 0.8mm
4. 真圓度 : < 0.8μm
5. 表面粗糙度 : Ra < 0.25μm
6. 刀桿有預設標準動平衡 G6.3 · 可另外指定精密動平衡 G2.5
7. 本體規範 : ISO 26623-1

1. Taper tolerance < AT3.
2. Hardness > HRC 56°.
3. Carbon depth > 0.8mm.
4. Roundness < 0.8μm.
5. Surface roughness : Ra < 0.25μm.
6. The shank has pre-balance at G6.3, and can provide precision balance at G2.5, made by request.
7. Shank body standard : ISO 26623-1.

PSC

| ① 接口型式 PSC Style | | ② 壓板鎖固方式 Clamping System | | | | ⑤ 離隙角 Clearance Angle | | ⑨ 長度記號 Length | | | | | |
|---------------------|---|-----------------------------|----------------------------------|------------|--------------------------------------|--------------------------|------------------------|------------------|------|------------------------------------|-------|-------|-------|
| 記號 Code | | 記號 Code | 功能 Function | 記號 Code | 功能 Function | 記號 Code | 離隙角 Clearance Angle | 記號 Code | 6.35 | 7.94 | 9.525 | 12.00 | 12.70 |
| PSC32(C3) | | A | Back Clamp System | M | 螺鎖上壓式 Multi Top and Hole Clamping | A | 3° | 80° | 06 | 08 | 09 | - | 12 |
| PSC40(C4) | B | | | | | 5° | 55° | | 07 | - | 11 | - | 15 |
| PSC50(C5) | | C | 上壓式 Top Clamping Without Hole | P | 側推式 Pin Lock Hole Clamping | C | | 7° | 35° | 11 | - | 16 | - |
| PSC63(C6) | D | | | | | 15° | - | - | | - | 12 | - | - |
| PSC80(C8) | | D | Double Clamp System | S | 壓孔式 Screw On | D | | 20° | - | - | - | 12 | - |
| PSC80X(C8X) | E | | | | | 25° | 11 | 13 | | 16 | - | 22 | |
| | | E | Off-set pin System | T | Taper lock System | E | | 30° | - | - | - | 09 | - |
| | | | | | | JS | Screw-on System | W | | 楔勾式 Wedge Top and Hole Clamping | J | 0° | - |
| | | JT | Back Clamp System | | | | | | K | | 11° | - | |
| | | | | | | | | | | | | | |

PSC63 - M C L N R - 45 065 12

① ② ③ ④ ⑤ ⑥ ⑦ ⑧ ⑨

| ③ 刀片形狀 Insert Shape | | |
|------------------------|-------------|--------------|
| 記號 Code | 角度 Angle | 圖形 Figure |
| C | 80° | |
| D | 55° | |
| K | | |
| R | - | |
| S | - | |
| T | - | |
| V | 35° | |
| W | 80° | |
| L | - | |
| H | 120° | |
| A | 85° | |
| B | 82° | |
| E | 75° | |
| M | 86° | |
| O | 135° | |
| P | 108° | |

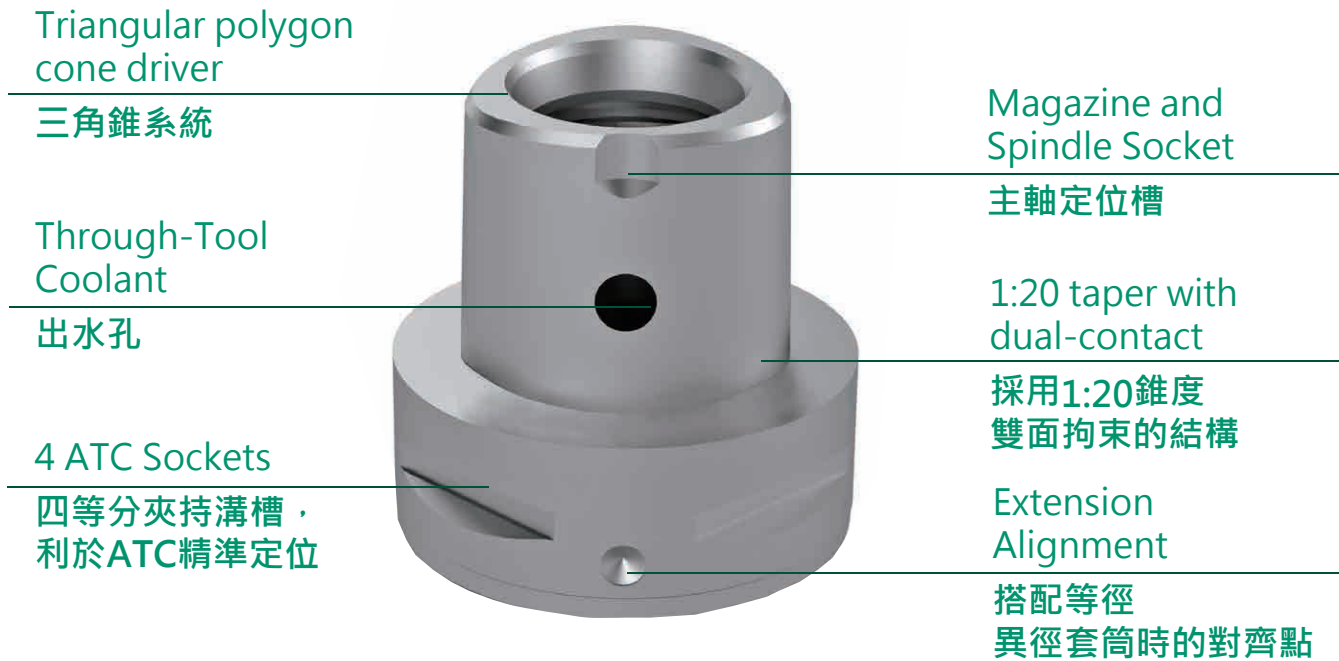
| ④ 進刀角度 Lead Angle | | | |
|----------------------|--------------|------------|--------------|
| 記號 Code | 圖形 Figure | 記號 Code | 圖形 Figure |
| A | 90° | M | 50° |
| B | 75° | N | 63° |
| C | 90° | P | 117.5° |
| D | 45° | R | 75° |
| E | 60° | S | 45° |
| F | 90° | T | 60° |
| G | 90° | U | 93° |
| H | 107.5° | V | 72.5° |
| J | 93° | W | 60° |
| K | 75° | Y | 85° |
| L | 95° | | |

| ⑥ 切削方向 Hand | |
|----------------|--------------|
| 記號 Code | 圖形 Figure |
| L | |
| N | |
| R | |

| ⑦ d1 尺寸 Size | |
|-----------------|--------------|
| 圖形 Figure | 圖形 Figure |
| | |

| ⑧ 刀具有效長 Effective Length | |
|-----------------------------|--------------|
| 圖形 Figure | 圖形 Figure |
| | |

• 長度單位 Unit of Length (mm)



重複定位精度高

XYZ軸向的重複定位精度是 $\pm 2\mu\text{m}$ ，刀具延伸四倍長的偏擺精度是 $3\mu\text{m}$ 。

獨特的雙面拘束設計

連接結構是高精度的三角錐體，採用1:20錐度雙面拘束的夾緊結構，在車削加工中，因為沒有定位誤差，即不懼軸高位移，且切削扭矩呈現均勻分布，提高扭轉剛性。

增進生產效率

穩固的夾持、良好的穩定性與精度，可以有效降低磨耗並增加刀具壽命。廣泛的應用方式配上模組化的組合模式，讓加工者得以節省時間與空間。

High Precision Coupling

The precision during repeated coupling in the XYZ direction is $\pm 2\mu\text{m}$ and the run-out accuracy is $3\mu\text{m}$.

Unique Dual Contact Design

The coupling structure is a high precision triangular form with a 1:20 taper for dual contact and tight clamping. Designed without drive keys evenly distributes torque without balance irregularities. There are no axial discrepancies during lathe turning due to consistent positioning.

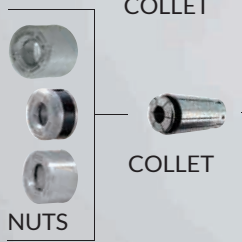
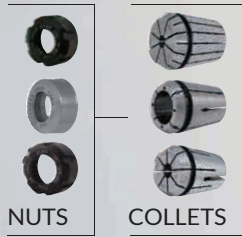
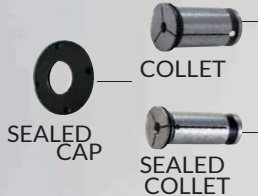
Increase Productivity

Rigid clamping for superior stability and precision, which produces minimal wear and a longer tool life. The universal applications and modular interface allow manufacturers to save time and space.

• 長度單位 Unit of Length (mm)

模組化示意圖 Modular combination

Milling 銑床



Turning 車床



BT + PSC ADAPTER



DAT + PSC ADAPTER



HSK + PSC ADAPTER



Boring 搪孔



PSC + PBJ



PSC + PCK



PSC + MCK



PSC + PMB



PSC / PMB-DP



PSC + SBJ



EXTENSION SPACER



BORING CUTTER



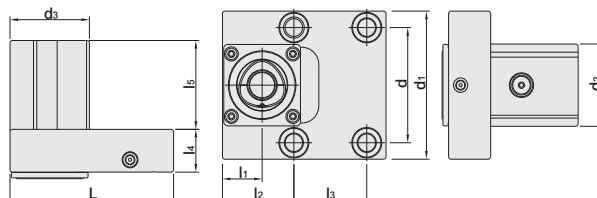
ACCESSORIES



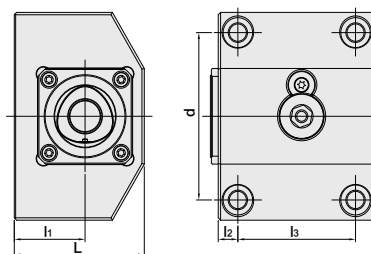
SCK BORING HEAD



SMB BORING HEAD



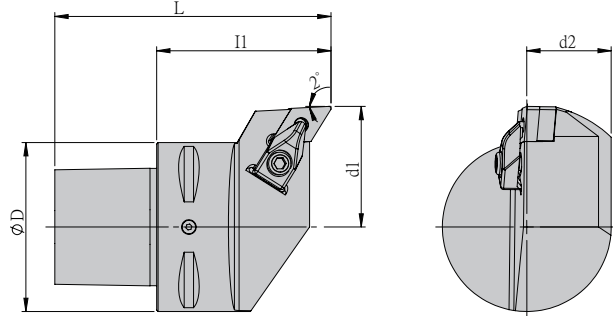
| 規格 Spec. | L | l ₁ | l ₂ | l ₃ | l ₄ | l ₅ | d | d ₁ | d ₂ | d ₃ | 適用主軸 Applicable type | 機器品牌 Machine brand | 重量 (KGS) Weight |
|-------------|-------|----------------|----------------|----------------|----------------|----------------|----|----------------|----------------|----------------|----------------------|--------------------|-----------------|
| EOTP40 - OR | 108.5 | 24.5 | 43.5 | 35 | 26 | 54 | 76 | 105 | 50 | 49 | PSC40 | VICTOR TAICHUNG | 2.81 |
| EOTP40 - HA | 101 | 24.5 | 44.1 | 45 | 26 | 54 | 70 | 90 | 50 | 49 | PSC40 | HAAS | 2.40 |
| EOTP40 - MO | 108.5 | 24.5 | 44 | 35 | 26 | 54 | 76 | 105 | 50 | 49 | PSC40 | DMG MORI | 2.88 |
| EOTP40 - MA | 104 | 24.5 | 32.75 | 60 | 33.5 | 45 | 84 | 104 | 49 | 47.75 | PSC40 | MAZAK | 2.90 |
| EOTP40 - GW | 114 | 24.5 | 49 | 35 | 26 | 54 | 76 | 105 | 50 | 49 | PSC40 | GOODWAY | 2.99 |
| EOTP40 - EX | 104 | 24.5 | 39 | 45 | 26 | 54 | 92 | 114 | 50 | 59 | PSC40 | TAKISAWA | 2.90 |



| 規格 Spec. | L | l ₁ | l ₂ | l ₃ | d | 適用主軸 Applicable type | 機器品牌 Machine brand | 重量 (KGS) Weight |
|-------------|------|----------------|----------------|----------------|----|----------------------|--------------------|-----------------|
| IOTP40 - HA | 60 | 30.4 | 21.3 | 45 | 70 | PSC40 | HAAS | 2.70 |
| IOTP40 - MA | 93.2 | 63 | 10 | 60 | 84 | PSC40 | MAZAK | 4.41 |
| IOTP40 - MO | 80 | 46 | 25 | 35 | 76 | PSC40 | DMG MORI | 4.10 |
| IOTP40 - OR | 81 | 46 | 25 | 35 | 76 | PSC40 | VICTOR TAICHUNG | 4.15 |
| IOTP40 - GW | 75 | 40 | 25 | 35 | 76 | PSC40 | GOODWAY | 4.20 |

- 各機械廠牌，刀座尺寸眾多，其他尺寸採客製樣式

• 長度單位 Unit of Length (mm)



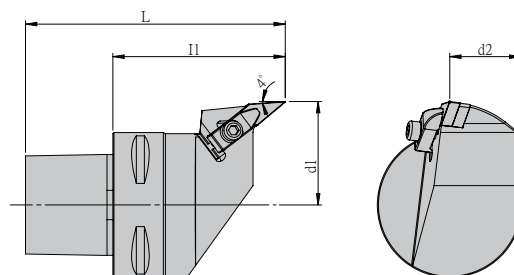
| 規格 Spec. | L | l ₁ | D | d ₁ | d ₂ | 刀片 Insert | 重量 (KGS) Weight |
|----------------------|-----|----------------|----|----------------|----------------|--------------|-----------------------|
| PSC32-DDJNR-22045-15 | 64 | 45 | 32 | 22 | 18.1 | DN..1504 | 0.22 |
| PSC32-DDJNL-22045-15 | 64 | 45 | 32 | 22 | 18.1 | DN..1504 | 0.22 |
| PSC40-DDJNR-27050-15 | 74 | 50 | 40 | 27 | 22.5 | DN..1504 | 0.42 |
| PSC40-DDJNL-27050-15 | 74 | 50 | 40 | 27 | 22.5 | DN..1504 | 0.42 |
| PSC50-DDJNR-3506015 | 90 | 60 | 50 | 35 | 28.65 | DN..1504 | 0.78 |
| PSC50-DDJNL-35060-15 | 90 | 60 | 50 | 35 | 28.65 | DN..1504 | 0.78 |
| PSC63-DDJNR-45075-15 | 113 | 75 | 63 | 45 | 31 | DN..1504 | 0.80 |
| PSC63-DDJNL-45075-15 | 113 | 75 | 63 | 45 | 31 | DN..1504 | 0.80 |

PSC

配件表 Accessories

| 刀片 Insert | 墊片 Shim | 墊片螺絲 Shim Screw | 扳手 Wrench | 扭力值 (N.m) Torque | 壓板 Clamp | 壓板螺絲 Clamp Screw | 壓板扳手 Clamp Wrench | 扭力值 (N.m) Torque |
|--------------|------------|--------------------|--------------|------------------------|-------------|---------------------|----------------------|------------------------|
| DN..1504 | DNS1504 | - | - | - | DCP-2 | M5-20-4.9 | PL4 | 5.0 |

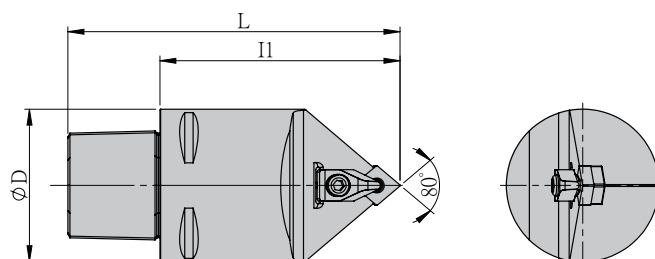
• 長度單位 Unit of Length (mm)



| 規格 Spec. | L | l ₁ | D | d ₁ | d ₂ | 刀片 Insert | 重量 (KGS) Weight |
|----------------------|-----|----------------|----|----------------|----------------|--------------|-----------------------|
| PSC32-DVLNR-20050-16 | 69 | 50 | 32 | 20 | 18.1 | VN..1604 | 0.22 |
| PSC32-DVLNL-20050-16 | 69 | 50 | 32 | 20 | 18.1 | VN..1604 | 0.22 |
| PSC40-DVLNR-27055-16 | 79 | 55 | 40 | 27 | 22.5 | VN..1604 | 0.42 |
| PSC40-DVLNL-27055-16 | 79 | 55 | 40 | 27 | 22.5 | VN..1604 | 0.42 |
| PSC50-DVLNR-35060-16 | 90 | 60 | 50 | 35 | 28.65 | VN..1604 | 0.78 |
| PSC50-DVLNL-35060-16 | 90 | 60 | 50 | 35 | 28.65 | VN..1604 | 0.78 |
| PSC63-DVLNR-45075-16 | 113 | 75 | 63 | 45 | 31 | VN..1604 | 0.80 |
| PSC63-DVLNL-45075-16 | 113 | 75 | 63 | 45 | 31 | VN..1604 | 0.80 |

配件表 Accessories

| 刀片 Insert | 墊片 Shim | 墊片螺絲 Shim Screw | 扳手 Wrench | 扭力值 (N.m) Torque | 壓板 Clamp | 壓板螺絲 Clamp Screw | 壓板扳手 Clamp Wrench | 扭力值 (N.m) Torque |
|--------------|------------|--------------------|--------------|------------------------|-------------|---------------------|----------------------|------------------------|
| VN..1604 | VNS1604 | - | - | - | DCP-4 | M5-20-4.9 | PL4 | 5.0 |

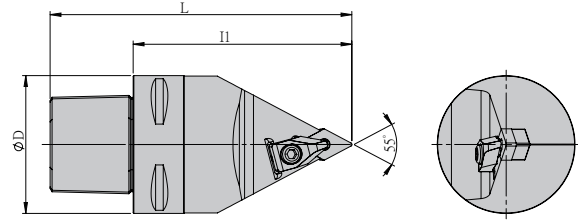


| 規格 Spec. | L | l ₁ | D | 刀片 Insert | 重量 (KGS) Weight |
|----------------------|-----|----------------|----|--------------|-----------------------|
| PSC32-DCMNN-00050-12 | 69 | 50 | 32 | CN..1204 | 0.24 |
| PSC40-DCMNN-00060-12 | 84 | 60 | 40 | CN..1204 | 0.44 |
| PSC50-DCMNN-00070-12 | 100 | 70 | 50 | CN..1204 | 0.76 |
| PSC63-DCMNN-00100-12 | 138 | 100 | 63 | CN..1204 | 0.86 |

配件表 Accessories

| 刀片 Insert | 墊片 Shim | 墊片螺絲 Shim Screw | 扳手 Wrench | 扭力值 (N.m) Torque | 壓板 Clamp | 壓板螺絲 Clamp Screw | 壓板扳手 Clamp Wrench | 扭力值 (N.m) Torque |
|--------------|------------|--------------------|--------------|------------------------|-------------|---------------------|----------------------|------------------------|
| CN..1204 | CNS1204 | M4-10-5.7-60 | T15 | 3.0 | DCP-2 | M5-20-4.9 | PL4 | 5.0 |

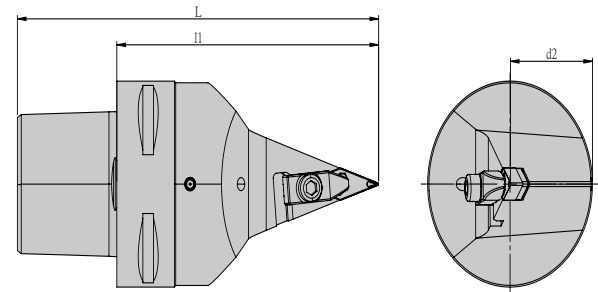
• 長度單位 Unit of Length (mm)



| 規格 Spec. | L | l ₁ | D | 刀片 Insert | 重量 (KGS) Weight |
|----------------------|-----|----------------|----|--------------|-----------------------|
| PSC32-DDNNN-00050-15 | 69 | 50 | 32 | DN..1504 | 0.22 |
| PSC40-DDNNN-00060-15 | 84 | 60 | 40 | DN..1504 | 0.40 |
| PSC50-DDNNN-00070-15 | 100 | 70 | 50 | DN..1504 | 0.70 |
| PSC63-DDNNN-00100-15 | 138 | 100 | 63 | DN..1504 | 0.80 |

配件表 Accessories

| 刀片 Insert | 墊片 Shim | 墊片螺絲 Shim Screw | 扳手 Wrench | 扭力值 (N.m) Torque | 壓板 Clamp | 壓板螺絲 Clamp Screw | 壓板扳手 Clamp Wrench | 扭力值 (N.m) Torque |
|--------------|------------|--------------------|--------------|------------------------|-------------|---------------------|----------------------|------------------------|
| DN..1504 | DNS1504 | - | - | - | DCP-2 | M5-20-4.9 | PL4 | 5.0 |

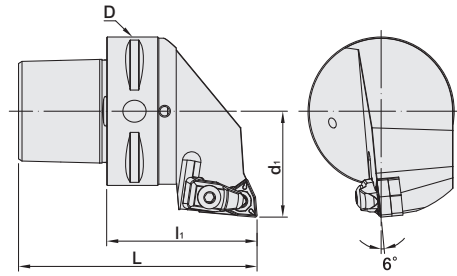


| 規格 Spec. | L | l ₁ | D | 刀片 Insert | 重量 (KGS) Weight |
|----------------------|-----|----------------|----|--------------|-----------------------|
| PSC32-DVVNN-00055-16 | 74 | 55 | 32 | VN..1604 | 0.22 |
| PSC40-DVVNN-00060-16 | 84 | 60 | 40 | VN..1604 | 0.38 |
| PSC50-DVVNN-00070-16 | 100 | 70 | 50 | VN..1604 | 0.68 |
| PSC63-DVVNN-00100-16 | 138 | 100 | 63 | VN..1604 | 0.78 |

配件表 Accessories

| 刀片 Insert | 墊片 Shim | 墊片螺絲 Shim Screw | 扳手 Wrench | 扭力值 (N.m) Torque | 壓板 Clamp | 壓板螺絲 Clamp Screw | 壓板扳手 Clamp Wrench | 扭力值 (N.m) Torque |
|--------------|------------|--------------------|--------------|------------------------|-------------|---------------------|----------------------|------------------------|
| VN..1604 | VNS1604 | - | - | - | DCP-4 | M5-20-4.9 | PL4 | 5.0 |

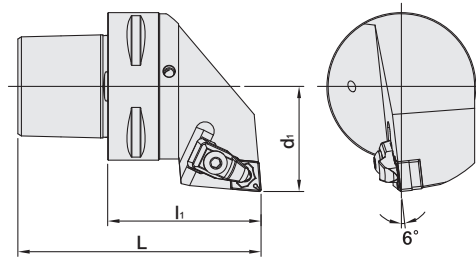
• 長度單位 Unit of Length (mm)



| 規格 Spec. | L | l ₁ | D | d _i | 刀片 Insert | 重量 (KGS) Weight |
|----------------------|-----|----------------|----|----------------|-----------|-----------------|
| PSC40-DWLNR-27050-08 | 74 | 50 | 40 | 27 | WN..0804 | 0.42 |
| PSC40-DWLNL-27050-08 | 74 | 50 | 40 | 27 | WN..0804 | 0.42 |
| PSC50-DWLNR-35060-08 | 90 | 60 | 50 | 35 | WN..0804 | 0.78 |
| PSC50-DWLNL-35060-08 | 90 | 60 | 50 | 35 | WN..0804 | 0.78 |
| PSC63-DWLNR-45065-08 | 103 | 65 | 63 | 45 | WN..0804 | 0.80 |
| PSC63-DWLNL-45065-08 | 103 | 65 | 63 | 45 | WN..0804 | 0.80 |
| PSC80-DWLNR-55080-08 | 128 | 80 | 80 | 55 | WN..0804 | 2.64 |
| PSC80-DWLNL-55080-08 | 128 | 80 | 80 | 55 | WN..0804 | 2.64 |

配件表 Accessories

| 刀片 Insert | 墊片 Shim | 墊片螺絲 Shim Screw | 扳手 Wrench | 扭力值 (N.m) Torque | 壓板 Clamp | 壓板螺絲 Clamp Screw | 扳手 Wrench | 扭力值 (N.m) Torque |
|-----------|---------|-----------------|-----------|------------------|----------|------------------|-----------|------------------|
| WN..0804 | WNS0804 | M5-12-7.1-70 | T20 | 5.0 | DCP-2 | M5-20-4.9 | PL4 | 5.0 |

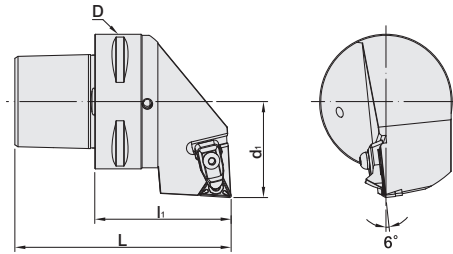


| 規格 Spec. | L | l ₁ | d _i | 刀片 Insert | 重量 (KGS) Weight |
|----------------------|-----|----------------|----------------|-----------|-----------------|
| PSC32-DCLNR-22045-12 | 64 | 45 | 22 | CN..1204 | 0.22 |
| PSC32-DCLNL-22045-12 | 64 | 45 | 22 | CN..1204 | 0.22 |
| PSC40-DCLNR-27050-12 | 74 | 50 | 27 | CN..1204 | 0.42 |
| PSC40-DCLNL-27050-12 | 74 | 50 | 27 | CN..1204 | 0.42 |
| PSC50-DCLNR-35060-12 | 90 | 60 | 35 | CN..1204 | 0.78 |
| PSC50-DCLNL-35060-12 | 90 | 60 | 35 | CN..1204 | 0.78 |
| PSC63-DCLNR-45065-12 | 103 | 65 | 45 | CN..1204 | 0.80 |
| PSC63-DCLNL-45065-12 | 103 | 65 | 45 | CN..1204 | 0.80 |
| PSC80-DCLNR-55080-12 | 128 | 80 | 55 | CN..1204 | 2.64 |
| PSC80-DCLNL-55080-12 | 128 | 80 | 55 | CN..1204 | 2.64 |

配件表 Accessories

| 刀片 Insert | 墊片 Shim | 墊片螺絲 Shim Screw | 扳手 Wrench | 扭力值 (N.m) Torque | 壓板 Clamp | 壓板螺絲 Clamp Screw | 扳手 Wrench | 扭力值 (N.m) Torque |
|-----------|---------|-----------------|-----------|------------------|----------|------------------|-----------|------------------|
| CN..1204 | CNS1204 | M4-10-5.7-60 | T15 | 3.0 | DCP-2 | M5-20-4.9 | PL4 | 5.0 |

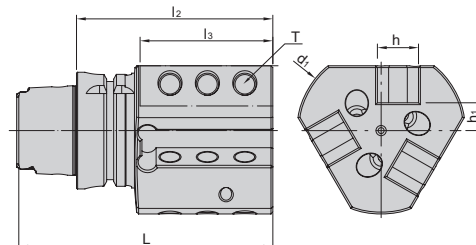
• 長度單位 Unit of Length (mm)



| 規格 Spec. | L | l ₁ | D | d ₁ | 刀片 Insert | 重量 (KGS) Weight |
|----------------------------|-----|----------------|----|----------------|-----------|-----------------|
| PSC32 - DTJNR - 22040 - 16 | 59 | 40 | 32 | 22 | TN..1604 | 0.22 |
| PSC32 - DTJNL - 22040 - 16 | 59 | 40 | 32 | 22 | TN..1604 | 0.22 |
| PSC32 - DTJNR - 27050 - 16 | 74 | 50 | 32 | 27 | TN..1604 | 0.42 |
| PSC32 - DTJNL - 27050 - 16 | 74 | 50 | 32 | 27 | TN..1604 | 0.42 |
| PSC32 - DTJNR - 35060 - 16 | 90 | 60 | 32 | 35 | TN..1604 | 0.78 |
| PSC32 - DTJNL - 35060 - 16 | 90 | 60 | 32 | 35 | TN..1604 | 0.78 |
| PSC32 - DTJNR - 45065 - 16 | 103 | 65 | 32 | 45 | TN..1604 | 0.80 |
| PSC32 - DTJNL - 45065 - 16 | 103 | 65 | 32 | 45 | TN..1604 | 0.80 |

配件表 Accessories

| 刀片 Insert | 墊片 Shim | 墊片螺絲 Shim Screw | 扳手 Wrench | 扭力值 (N.m) Torque | 壓板 Clamp | 壓板螺絲 Clamp Screw | 扳手 Wrench | 扭力值 (N.m) Torque |
|-----------|---------|-----------------|-----------|------------------|----------|------------------|-----------|------------------|
| TN..1604 | TNS1604 | M4-9-5.15-47 | T15 | 3.0 | DCP-1 | M5-20-4.9 | PL4 | 5.0 |

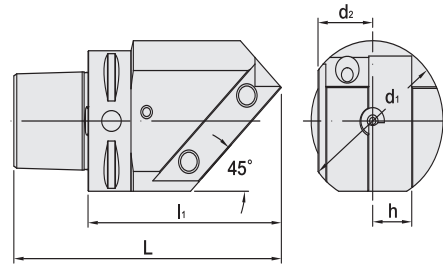


| 規格 Spec. | L | l ₁ | l ₂ | d ₁ | h | h ₁ | 重量 (KGS) Weight |
|---------------------|-----|----------------|----------------|----------------|----|----------------|-----------------|
| PSC50 x SV20R - 123 | 153 | 123 | 97 | 90 | 20 | 16 | 3.56 |
| PSC50 x SV20L - 123 | 153 | 123 | 97 | 90 | 20 | 16 | 3.56 |
| PSC63 x SV20R - 125 | 163 | 125 | 97 | 90 | 20 | 16 | 3.58 |
| PSC63 x SV20L - 125 | 163 | 125 | 97 | 90 | 20 | 16 | 3.58 |
| PSC80 x SV32R - 150 | 198 | 150 | 114 | 120 | 32 | 20 | 7.13 |
| PSC80 x SV32L - 150 | 198 | 150 | 114 | 120 | 32 | 20 | 7.13 |

配件表 Accessories

| 刀片 Insert | 墊片 Shim | 墊片螺絲 Shim Screw | 壓板 Clamp | 壓板螺絲 Clamp Screw | 彈簧 Spring |
|-----------|---------|-----------------|----------|------------------|-----------|
| CN..1204 | C12BM | SM6x10xA1 | C2RA | CM6x25C | SPR4 |

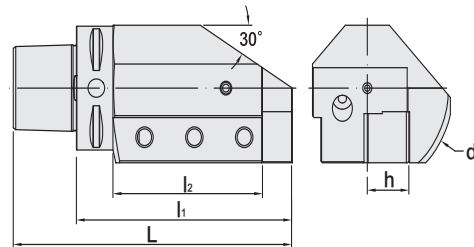
• 長度單位 Unit of Length (mm)



| 規格 Spec. | L | l ₁ | d ₁ | d ₂ | h | 重量 (KGS) Weight |
|---------------------|-----|----------------|----------------|----------------|----|--------------------|
| PSC50 x SN20R - 97 | 127 | 97 | 72 | 31.5 | 20 | 1.66 |
| PSC50 x SN20L - 97 | 127 | 97 | 72 | 31.5 | 20 | 1.66 |
| PSC63 x SN20R - 99 | 137 | 99 | 72 | 31.5 | 20 | 2.10 |
| PSC63 x SN20L - 99 | 137 | 99 | 72 | 31.5 | 20 | 2.10 |
| PSC80 x SN32R - 135 | 183 | 135 | 140 | 45 | 32 | 6.51 |
| PSC80 x SN32L - 135 | 183 | 135 | 140 | 45 | 32 | 6.51 |

配件表 Accessories

| 刀片 Insert | 墊片 Shim | 墊片螺絲 Shim Screw | 壓板 Clamp | 壓板螺絲 Clamp Screw | 彈簧 Spring |
|--------------|------------|--------------------|-------------|---------------------|--------------|
| WN..0804 | W08BM | SM6x10xA1 | C2RA | CM6x25C | SPR4 |

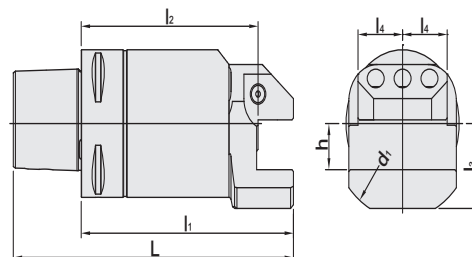


| 規格 Spec. | L | l ₁ | l ₂ | d ₁ | h | 重量 (KGS) Weight |
|---------------------|-----|----------------|----------------|----------------|----|--------------------|
| PSC50 x S20R - 98 | 128 | 98 | 68 | 90 | 20 | 2.22 |
| PSC50 x S20L - 98 | 128 | 98 | 68 | 90 | 20 | 2.22 |
| PSC63 x S20R - 100 | 138 | 100 | 75 | 90 | 20 | 2.34 |
| PSC63 x S20L - 100 | 138 | 100 | 75 | 90 | 20 | 2.34 |
| PSC63 x S25R - 130 | 168 | 130 | 102 | 103.5 | 25 | 3.93 |
| PSC63 x S25L - 130 | 168 | 130 | 102 | 103.5 | 25 | 3.93 |
| PSC80 x S32L - 140 | 188 | 140 | 130 | 110 | 32 | 5.05 |
| PSC80 x S32R - 140 | 188 | 140 | 130 | 110 | 32 | 5.05 |
| PSC80X x S32L - 143 | 191 | 143 | 133 | 145 | 32 | 7.75 |
| PSC80X x S32R - 143 | 191 | 143 | 133 | 145 | 32 | 7.75 |

配件表 Accessories

| 刀片 Insert | 墊片 Shim | 墊片螺絲 Shim Screw | 壓板 Clamp | 壓板螺絲 Clamp Screw | 彈簧 Spring |
|--------------|------------|--------------------|-------------|---------------------|--------------|
| CN..1204 | C12BM | SM6x10xA1 | C2RA | CM6x25C | SPR4 |

• 長度單位 Unit of Length (mm)

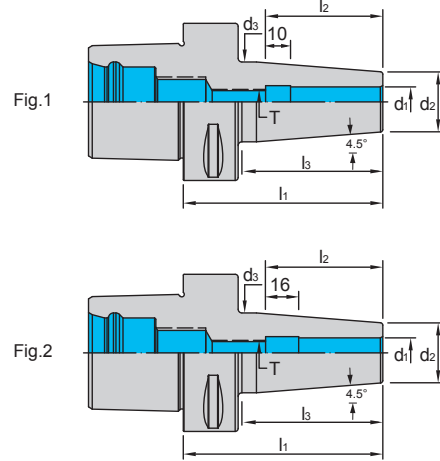


| 規格 Spec. | L | l ₁ | l ₂ | l ₃ | l ₄ | h | d ₁ | 重量 (KGS) Weight |
|------------------|-----|----------------|----------------|----------------|----------------|----|----------------|--------------------|
| PSC40xSF20-55 | 79 | 55 | 35 | 36 | 30 | 20 | 80 | 0.84 |
| PSC50xSF20-65 | 95 | 65 | 45 | 39 | 25.5 | 20 | 85 | 1.43 |
| PSC63xSF20-70 | 108 | 70 | 50 | 39 | 25.5 | 20 | 85 | 1.84 |
| PSC63xSF25-80 | 118 | 80 | 55 | 46 | 31.5 | 25 | 103 | 2.55 |
| PSC63xSF32-80 | 118 | 80 | 48 | 65 | 40 | 32 | 142 | 3.64 |
| PSC80xSF25-75 | 123 | 75 | 50 | 46 | 31.5 | 25 | 103 | 3.01 |
| PSC80xSF25-150 | 198 | 150 | 125 | 46 | 31.5 | 25 | 103 | 5.84 |
| PSC80xSF25-180 | 228 | 180 | 155 | 46 | 31.5 | 25 | 103 | 6.97 |
| PSC80xSF32-85 | 133 | 85 | 53 | 65 | 40 | 32 | 142 | 4.52 |
| PSC80X x SF32-90 | 138 | 90 | 58 | 65 | 40 | 32 | 142 | 5.65 |
| PSC100xSF32-90 | 150 | 90 | 58 | 65 | 40 | 32 | 145 | 6.45 |

配件表 Accessories

| 刀片 Insert | 墊片 Shim | 墊片螺絲 Shim Screw | 壓板 Clamp | 壓板螺絲 Clamp Screw | 彈簧 Spring |
|--------------|------------|--------------------|-------------|---------------------|--------------|
| CN..1204 | C12BM | SM6x10xA1 | C2RA | CM6x25C | SPR4 |

• 長度單位 Unit of Length (mm)



特點 Feature

- 標準動平衡 G2.5 25000rpm

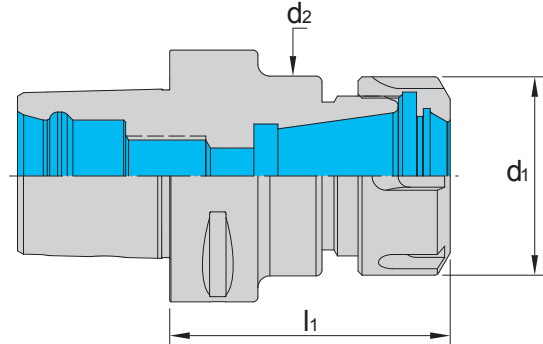
- Dynamic balancing G2.5 at 25000 rpm.

| 規格 Spec. | l_1 | l_2 | l_3 | d_1 | d_2 | d_3 | T | Fig. | 重量 (KGS) Weight |
|----------------|-------|-------|-------|-------|-------|-------|-------------|------|-----------------------|
| PSC40xSFC6-75 | 75 | 36 | 53 | 6 | 20 | 26 | M5 x 0.8P | 2 | - |
| PSC40xSFC8-75 | 75 | 36 | 53 | 8 | 20 | 26 | M6 x 1.0P | 1 | - |
| PSC40xSFC10-75 | 75 | 42 | 54 | 10 | 24 | 32 | M8 x 1.25P | 1 | - |
| PSC40xSFC12-75 | 75 | 47 | 54 | 12 | 24 | 32 | M10 x 1.5P | 1 | - |
| PSC40xSFC14-80 | 80 | 47 | 59 | 14 | 27 | 34 | M10 x 1.5P | 1 | - |
| PSC40xSFC16-80 | 80 | 50 | 59 | 16 | 27 | 34 | M12 x 1.75P | 1 | - |
| PSC40xSFC18-80 | 80 | 52 | 59 | 18 | 33 | 42 | M12 x 1.75P | 1 | - |
| PSC40xSFC20-85 | 85 | 52 | 64 | 20 | 33 | 42 | M16 x 2.0P | 1 | - |
| PSC50xSFC6-75 | 75 | 36 | 53 | 6 | 20 | 26 | M5 x 0.8P | 2 | - |
| PSC50xSFC8-75 | 75 | 36 | 53 | 8 | 20 | 26 | M6 x 1.0P | 1 | - |
| PSC50xSFC10-75 | 75 | 42 | 54 | 10 | 24 | 32 | M8 x 1.25P | 1 | - |
| PSC50xSFC12-75 | 75 | 47 | 59 | 12 | 24 | 32 | M10 x 1.5P | 1 | - |
| PSC50xSFC14-80 | 80 | 47 | 59 | 14 | 27 | 34 | M10 x 1.5P | 1 | - |
| PSC50xSFC16-80 | 80 | 50 | 59 | 16 | 27 | 34 | M12 x 1.75P | 1 | - |
| PSC50xSFC18-80 | 80 | 52 | 59 | 18 | 33 | 42 | M12 x 1.75P | 1 | - |
| PSC50xSFC20-85 | 85 | 52 | 64 | 20 | 33 | 42 | M16 x 2.0P | 1 | - |
| PSC50xSFC25-90 | 90 | 58 | 68 | 25 | 44 | 53 | M20 x 2.0P | 1 | - |
| PSC63xSFC6-80 | 80 | 36 | 53 | 6 | 20 | 26 | M5 x 0.8P | 2 | - |
| PSC63xSFC8-80 | 80 | 36 | 53 | 8 | 20 | 26 | M6 x 1.0P | 1 | - |
| PSC63xSFC10-80 | 80 | 52 | 53 | 10 | 24 | 32 | M8 x 1.25P | 1 | - |
| PSC63xSFC12-80 | 80 | 52 | 56 | 12 | 24 | 32 | M10 x 1.5P | 1 | - |
| PSC63xSFC14-85 | 85 | 47 | 58 | 14 | 27 | 34 | M10 x 1.5P | 1 | - |
| PSC63xSFC16-85 | 85 | 52 | 58 | 16 | 27 | 34 | M12 x 1.75P | 1 | - |
| PSC63xSFC18-85 | 85 | 52 | 58 | 18 | 33 | 42 | M12 x 1.75P | 1 | - |
| PSC63xSFC20-85 | 85 | 52 | 58 | 20 | 33 | 42 | M16 x 2.0P | 1 | - |
| PSC63xSFC25-90 | 90 | 58 | 66 | 25 | 44 | 53 | M20 x 2.0P | 1 | - |
| PSC63xSFC32-95 | 95 | 58 | 71 | 32 | 44 | 53 | M20 x 2.0P | 1 | - |

選配表 Option

| 加熱器 Hot-Air | 鎖刀座 Lock Device |
|-------------|-----------------|
| | |
| B400 | B655 |

• 長度單位 Unit of Length (mm)



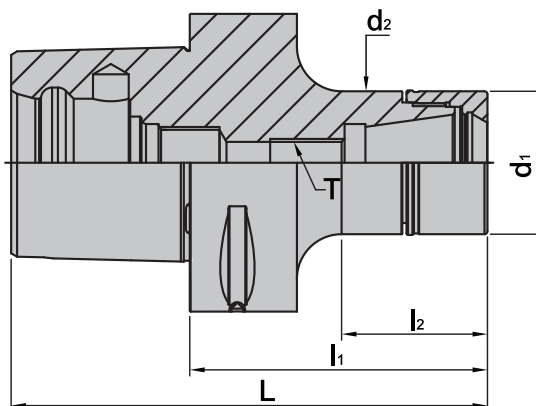
| 規格 Spec. | l_1 | d_1 | d_2 | 夾持範圍 Clamp Range | 重量 (KGS) Weight |
|----------------|-------|-------|-------|------------------|-----------------|
| PSC32xER16-45 | 45 | 28 | 28 | Ø1-Ø10 | 0.20 |
| PSC32xER20-45 | 45 | 34 | 34 | Ø2-Ø13 | 0.30 |
| PSC40xER16-70 | 70 | 28 | 28 | Ø1-Ø10 | 0.40 |
| PSC40xER20-52 | 52 | 34 | 34 | Ø2-Ø13 | 0.30 |
| PSC40xER25-52 | 52 | 42 | 42 | Ø2-Ø16 | 0.40 |
| PSC40xER32-54 | 54 | 50 | 50 | Ø3-Ø20 | 0.50 |
| PSC50xER16-100 | 100 | 28 | 28 | Ø1-Ø10 | 0.90 |
| PSC50xER20-55 | 55 | 34 | 34 | Ø2-Ø13 | 0.50 |
| PSC50xER20-100 | 100 | 34 | 34 | Ø2-Ø13 | 0.80 |
| PSC50xER25-55 | 55 | 42 | 42 | Ø2-Ø16 | 0.50 |
| PSC50xER32-57 | 57 | 50 | 50 | Ø3-Ø20 | 0.60 |
| PSC50xER32-100 | 100 | 50 | 50 | Ø3-Ø20 | 0.90 |
| PSC63xER16-100 | 100 | 28 | 28 | Ø1-Ø10 | 1.30 |
| PSC63xER20-60 | 60 | 34 | 34 | Ø2-Ø13 | 0.80 |
| PSC63xER25-60 | 60 | 42 | 42 | Ø2-Ø16 | 1.08 |
| PSC63xER25-100 | 100 | 42 | 42 | Ø2-Ø16 | 1.30 |
| PSC63xER32-70 | 70 | 50 | 50 | Ø3-Ø20 | 0.80 |
| PSC63xER32-100 | 100 | 50 | 50 | Ø3-Ø20 | 1.50 |
| PSC63xER40-65 | 65 | 63 | 63 | Ø3-Ø26 | 1.10 |

PSC

選配表 Option

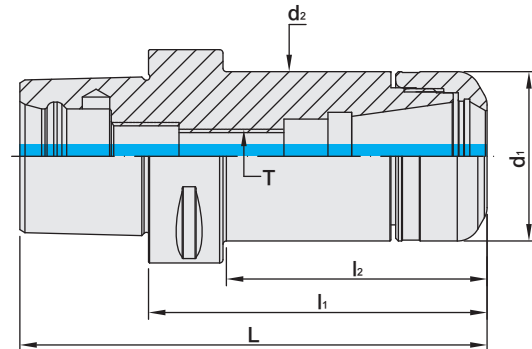
| 筒夾 Collet | 螺帽 Nut | 扳手 Spanner | 鎖刀座 Lock Device |
|-----------|--------|------------|-----------------|
| | | | |
| B612 | B634 | B650 | B655 |

• 長度單位 Unit of Length (mm)



| 規格 Spec. | L | l1 | l2 | d1 | d2 | T | 夾持範圍 Clamp Range | 重量 (KGS) Weight |
|-------------------|-----|-----|-----|----|----|-----------|---------------------|--------------------|
| PSC40xPro.E32-100 | 124 | 100 | 76 | 50 | 50 | M16x2.0P | 2~20 | 1.04 |
| PSC40xPro.E32-125 | 149 | 125 | 101 | 50 | 50 | M16x2.0P | 2~20 | 1.36 |
| PSC40xPro.E32-150 | 174 | 150 | 126 | 50 | 50 | M16x2.0P | 2~20 | 1.69 |
| PSC50xPro.E25-100 | 130 | 100 | 79 | 42 | 42 | M16x2.0P | 1~16 | 1.09 |
| PSC50xPro.E25-125 | 155 | 125 | 104 | 42 | 42 | M16x2.0P | 1~16 | 1.32 |
| PSC50xPro.E25-150 | 180 | 150 | 129 | 42 | 42 | M16x2.0P | 1~16 | 1.56 |
| PSC50xPro.E32-70 | 100 | 70 | 49 | 50 | 50 | - | 2~20 | 0.84 |
| PSC50xPro.E32-100 | 130 | 100 | 79 | 50 | 50 | M16x2.0P | 2~20 | 1.23 |
| PSC50xPro.E32-125 | 155 | 125 | 104 | 50 | 50 | M16x2.0P | 2~20 | 1.54 |
| PSC50xPro.E32-150 | 180 | 150 | 129 | 50 | 50 | M16x2.0P | 2~20 | 1.85 |
| PSC63xPro.E16-70 | 108 | 70 | 43 | 30 | 30 | - | 1~10 | 0.94 |
| PSC63xPro.E16-100 | 138 | 100 | 73 | 30 | 30 | M10x1.5P | 1~10 | 1.09 |
| PSC63xPro.E16-125 | 163 | 125 | 98 | 30 | 30 | M10x1.5P | 1~10 | 1.18 |
| PSC63xPro.E16-150 | 188 | 150 | 123 | 30 | 30 | M10x1.5P | 1~10 | 1.26 |
| PSC63xPro.E16-200 | 238 | 200 | 173 | 30 | 30 | M10x1.5P | 1~10 | 1.44 |
| PSC63xPro.E20-70 | 108 | 70 | 43 | 35 | 35 | - | 1~13 | 1.00 |
| PSC63xPro.E20-100 | 138 | 100 | 70 | 35 | 35 | M12x1.75P | 1~13 | 1.21 |
| PSC63xPro.E20-125 | 163 | 125 | 95 | 35 | 35 | M12x1.75P | 1~13 | 1.35 |
| PSC63xPro.E20-150 | 188 | 150 | 120 | 35 | 35 | M12x1.75P | 1~13 | 1.49 |
| PSC63xPro.E20-200 | 238 | 200 | 170 | 35 | 35 | M12x1.75P | 1~13 | 1.76 |
| PSC63xPro.E25-70 | 108 | 70 | 45 | 42 | 42 | - | 1~16 | 1.11 |
| PSC63xPro.E25-100 | 138 | 100 | 75 | 42 | 42 | M16x2.0P | 1~16 | 1.39 |
| PSC63xPro.E25-125 | 163 | 125 | 100 | 42 | 42 | M16x2.0P | 1~16 | 1.60 |
| PSC63xPro.E25-150 | 188 | 150 | 125 | 42 | 42 | M16x2.0P | 1~16 | 1.82 |
| PSC63xPro.E25-200 | 238 | 200 | 175 | 42 | 42 | M16x2.0P | 1~16 | 2.26 |
| PSC63xPro.E32-70 | 108 | 70 | 45 | 50 | 50 | - | 2~20 | 1.16 |
| PSC63xPro.E32-100 | 138 | 100 | 75 | 50 | 50 | M16x2.0P | 2~20 | 1.52 |
| PSC63xPro.E32-125 | 163 | 125 | 100 | 50 | 50 | M16x2.0P | 2~20 | 1.82 |
| PSC63xPro.E32-150 | 188 | 150 | 125 | 50 | 50 | M16x2.0P | 2~20 | 2.12 |
| PSC63xPro.E32-200 | 238 | 200 | 175 | 50 | 50 | M16x2.0P | 2~20 | 2.72 |
| PSC80xPro.E16-100 | 148 | 100 | 65 | 30 | 30 | M10x1.5P | 1~10 | 2.00 |
| PSC80xPro.E16-125 | 173 | 125 | 90 | 30 | 30 | M10x1.5P | 1~10 | 2.13 |
| PSC80xPro.E16-150 | 198 | 150 | 110 | 30 | 30 | M10x1.5P | 1~10 | 2.27 |
| PSC80xPro.E16-200 | 248 | 200 | 160 | 30 | 30 | M10x1.5P | 1~10 | 2.52 |
| PSC80xPro.E20-100 | 148 | 100 | 65 | 35 | 35 | M12x1.75P | 1~13 | 2.10 |
| PSC80xPro.E20-125 | 173 | 125 | 90 | 35 | 35 | M12x1.75P | 1~13 | 2.28 |
| PSC80xPro.E20-150 | 198 | 150 | 110 | 35 | 35 | M12x1.75P | 1~13 | 2.46 |
| PSC80xPro.E20-200 | 248 | 200 | 160 | 35 | 35 | M12x1.75P | 1~13 | 2.80 |

精度 Accuracy : < 3 μ m



特點 Feature

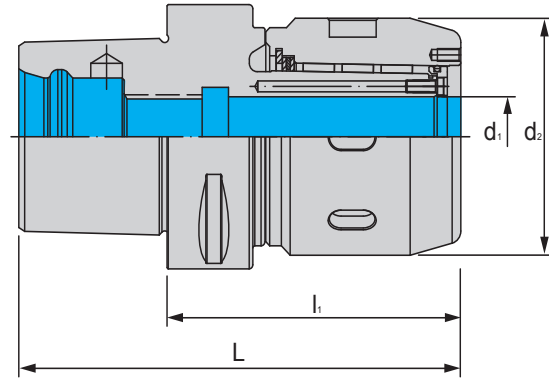
- 標準動平衡 G2.5 25000rpm

- Standard balance of G2.5 at 25000 rpm.

| 規格 Spec. | L | l1 | l2 | d1 | d2 | T | 夾持範圍 Size Range | 重量 (KGS) Weight |
|----------------------|-----|-----|-----|----|----|-----------|--------------------|--------------------|
| PSC32 x PNER16 - 45 | 64 | 45 | 29 | 30 | 30 | - | 3~10 | 0.21 |
| PSC32 x PNER20 - 45 | 64 | 45 | 30 | 32 | 32 | - | 3~13 | 0.21 |
| PSC40 x PNER16 - 55 | 79 | 55 | 30 | 30 | 30 | - | 3~10 | 0.36 |
| PSC40 x PNER20 - 55 | 79 | 55 | 31 | 32 | 32 | - | 3~13 | 0.36 |
| PSC50 x PNER16 - 60 | 90 | 60 | 34 | 30 | 30 | - | 3~10 | 0.56 |
| PSC50 x PNER16 - 100 | 130 | 100 | 74 | 30 | 30 | M10x1.5P | 3~10 | 0.75 |
| PSC50 x PNER20 - 60 | 90 | 60 | 34 | 32 | 32 | - | 3~13 | 0.57 |
| PSC50 x PNER25 - 60 | 90 | 60 | 37 | 40 | 40 | - | 3~16 | 0.63 |
| PSC50 x PNER32 - 60 | 90 | 60 | 37 | 50 | 50 | - | 3~20 | 0.70 |
| PSC63 x PNER16 - 60 | 98 | 60 | 35 | 30 | 30 | - | 3~10 | 0.87 |
| PSC63 x PNER16 - 100 | 138 | 100 | 75 | 30 | 30 | M10x1.5P | 3~10 | 1.07 |
| PSC63 x PNER20 - 60 | 98 | 60 | 35 | 32 | 32 | - | 3~13 | 0.88 |
| PSC63 x PNER20 - 100 | 138 | 100 | 75 | 32 | 32 | M12x1.75P | 3~13 | 1.10 |
| PSC63 x PNER25 - 60 | 98 | 60 | 35 | 40 | 40 | - | 3~16 | 0.94 |
| PSC63 x PNER25 - 100 | 138 | 100 | 75 | 40 | 40 | M16x2.0P | 3~16 | 1.28 |
| PSC63 x PNER25 - 130 | 168 | 130 | 105 | 40 | 40 | M16x2.0P | 3~16 | 1.53 |
| PSC63 x PNER25 - 160 | 198 | 160 | 135 | 40 | 40 | M16x2.0P | 3~16 | 1.79 |
| PSC63 x PNER32 - 60 | 98 | 60 | 35 | 50 | 50 | - | 3~20 | 1.00 |
| PSC63 x PNER32 - 100 | 138 | 100 | 75 | 50 | 50 | M16x2.0P | 3~20 | 1.55 |
| PSC63 x PNER32 - 130 | 168 | 130 | 105 | 50 | 50 | M16x2.0P | 3~20 | 1.97 |
| PSC63 x PNER40 - 60 | 98 | 60 | 38 | 63 | 63 | - | 6~26 | 1.18 |
| PSC63 x PNER40 - 100 | 138 | 100 | 68 | 63 | 63 | M20x2.0P | 6~26 | 2.03 |
| PSC80 x PNER32 - 100 | 148 | 100 | 65 | 50 | 50 | M16x2.0P | 3~20 | 2.38 |
| PSC80 x PNER40 - 100 | 148 | 100 | 69 | 63 | 63 | M20x2.0P | 6~26 | 2.73 |

PSC

• 長度單位 Unit of Length (mm)



特點 Feature

- 內孔特殊溝槽設計，防止所夾持刀具脫刀滑落，可以割斷附著油膜，不會有脫刀現象產生，提高了使用的安全性
- 刀桿本體厚，可產生充分的夾持力。採用滾針軸承原理設計，滾動磨擦及脫落減到最小，裝置操作省力便捷
- 螺帽與刀桿端面鎖固後，緊貼牢靠，提高剛性並徹底的防塵
- 偏擺精度 :0.001~0.005 以內，真圓度 :0.02mm
- MLD20、MLD-3/4、MLK20 扳手共用
- MLD32、MLD-1-1/4、MLK32 扳手共用

- There is a special design for the slots of internal hole. It prevents the cutting tools from slipping and increases the clamping power.
- The body of the tool holder is thick, so it has good clamping power. It adopts the needle bearing design to prevent the slipping. The operation is convenient and easy.
- After locking the cutting tool (The tolerance of the cutting tool must be less than h6), it is more contacted with the flange while locking the clamping nut and tool holder. It can prevent the bearing cage from deformation easily. Also, rigidity and dust-proof function is improved.
- Run-out: Within 0.001~0.005mm. Concentricity: 0.02mm.
- MLD20 and MLD-3/4、MLK20 spanner can be used in common.
- MLD32 and MLD-1-1/4、MLK32 spanner can be used in common.

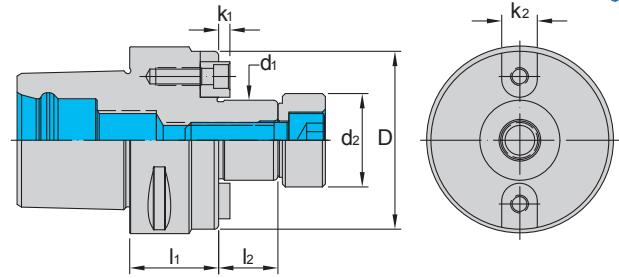
| 規格 Spec. | l_1 | d_1 | d_2 | 重量 (KGS) Weight |
|----------------|-------|-------|-------|-----------------|
| PSC50xMLD20-75 | 75 | 20 | 56.5 | 1.20 |
| PSC50xMLD32-90 | 90 | 32 | 71 | 1.90 |
| PSC63xMLD20-75 | 75 | 20 | 56.5 | 1.40 |
| PSC63xMLD32-85 | 85 | 32 | 71 | 2.20 |

※ 英制規格，接單生產 INCH size made to order.

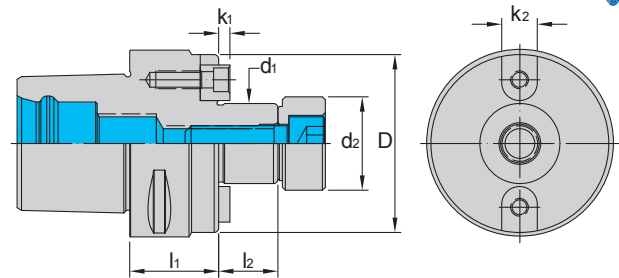
選配表 Option

| 筒夾 Collet | 扳手 Spanner | 止水端蓋 Sealed Cap | 鎖刀座 Lock Device |
|-----------|------------|-----------------|-----------------|
| | | | |
| B631 | B653 | B640 | B655 |

• 長度單位 Unit of Length (mm)

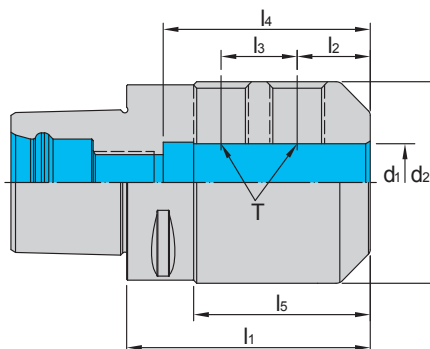


| 規格 Spec. | l_1 | l_2 | d_1 | d_2 | D | K_1 | K_2 | 重量 (KGS) Weight |
|-------------------|-------|--------|-------|--------|--------|-------|--------|-----------------------|
| PSC50xFMA25.4-40 | 40 | 17.449 | 25.4 | 31.496 | 55.626 | 4.775 | 9.525 | - |
| PSC63xFMA25.4-50 | 50 | 17.449 | 25.4 | 31.496 | 55.626 | 4.775 | 9.525 | - |
| PSC63xFMA31.75-50 | 50 | 17.449 | 31.75 | 40.995 | 69.85 | 6.35 | 12.7 | - |
| PSC63xFMA38.1-50 | 50 | 23.825 | 38.1 | 44.5 | 96.774 | 8.864 | 15.875 | - |



| 規格 Spec. | l_1 | l_2 | D | d_1 | d_2 | K_1 | K_2 | 重量 (KGS) Weight |
|----------------|-------|-------|----|-------|-------|-------|-------|-----------------------|
| PSC32xFMB16-30 | 30 | 16 | 34 | 16 | 23.5 | 4 | 8 | 0.30 |
| PSC40xFMB16-32 | 32 | 16 | 34 | 16 | 23.5 | 4 | 8 | 0.30 |
| PSC40xFMB16-55 | 55 | 16 | 34 | 16 | 23.5 | 4 | 8 | 0.40 |
| PSC40xFMB22-25 | 25 | 22 | 50 | 22 | 26 | 4.8 | 10 | 0.40 |
| PSC40xFMB22-55 | 55 | 22 | 50 | 22 | 26 | 4.8 | 10 | 0.70 |
| PSC50xFMB16-35 | 35 | 16 | 34 | 16 | 23.5 | 4 | 8 | 0.60 |
| PSC50xFMB16-70 | 70 | 16 | 34 | 16 | 23.5 | 4 | 8 | 0.70 |
| PSC50xFMB22-25 | 25 | 16 | 50 | 22 | 26 | 4.8 | 10 | 0.60 |
| PSC50xFMB22-70 | 70 | 16 | 50 | 22 | 26 | 4.8 | 10 | 1.00 |
| PSC50xFMB27-25 | 25 | 18 | 50 | 27 | 31.5 | 5.8 | 12 | 0.70 |
| PSC50xFMB32-40 | 40 | 22 | 63 | 32 | 41 | 6.8 | 14 | 1.20 |
| PSC63xFMB16-40 | 40 | 16 | 34 | 16 | 23.5 | 4 | 8 | 0.90 |
| PSC63xFMB22-40 | 40 | 16 | 50 | 22 | 26 | 4.8 | 10 | 0.90 |
| PSC63xFMB27-30 | 30 | 18 | 50 | 27 | 31.5 | 5.8 | 12 | 1.00 |
| PSC63xFMB32-45 | 45 | 22 | 63 | 32 | 41 | 6.8 | 14 | 1.60 |
| PSC63xFMB40-45 | 45 | 25 | 80 | 40 | 48 | 8.3 | 16 | 1.60 |

• 長度單位 Unit of Length (mm)



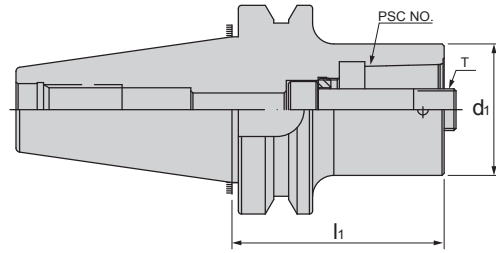
PSC

| 規格 Spec. | l_1 | l_2 | l_3 | l_4 | l_5 | d_1 | d_2 | T | 重量 (KGS) Weight |
|-----------------|-------|-------|-------|-------|-------|-------|-------|-----|-----------------------|
| PSC32xSLN6-45 | 45 | 18 | - | 35 | 27.5 | 6 | 25 | M6 | 0.30 |
| PSC32xSLN8-45 | 45 | 18 | - | 35 | 29 | 8 | 28 | M8 | 0.30 |
| PSC32xSLN10-50 | 50 | 20 | - | 39 | 27.5 | 10 | 35 | M10 | 0.40 |
| PSC32xSLN12-55 | 55 | 22.5 | - | 44 | 36 | 12 | 42 | M12 | 0.30 |
| PSC40xSLN6-50 | 50 | 18 | - | 35 | 25.5 | 6 | 25 | M6 | 0.40 |
| PSC40xSLN8-50 | 50 | 18 | - | 35 | 26 | 8 | 28 | M8 | 0.40 |
| PSC40xSLN10-50 | 50 | 20 | - | 39 | 27.5 | 10 | 35 | M10 | 0.50 |
| PSC40xSLN12-55 | 55 | 22.5 | - | 44 | 36 | 12 | 42 | M12 | 0.60 |
| PSC40xSLN14-50 | 50 | 22.5 | - | 44 | 37 | 14 | 44 | M12 | 0.60 |
| PSC40xSLN16-55 | 55 | 24 | - | 47 | 39 | 16 | 48 | M14 | 0.70 |
| PSC50xSLN6-50 | 50 | 18 | - | 35 | 25.5 | 6 | 25 | M6 | 0.60 |
| PSC50xSLN8-50 | 50 | 18 | - | 35 | 26 | 8 | 28 | M8 | 0.70 |
| PSC50xSLN10-55 | 55 | 20 | - | 39 | 27.5 | 10 | 35 | M10 | 0.70 |
| PSC50xSLN12-60 | 60 | 22.5 | - | 44 | 36 | 12 | 42 | M12 | 0.90 |
| PSC50xSLN14-60 | 60 | 22.5 | - | 44 | 37 | 14 | 44 | M12 | 0.80 |
| PSC50xSLN16-60 | 60 | 24 | - | 47 | 39 | 16 | 48 | M14 | 1.00 |
| PSC50xSLN18-60 | 60 | 24 | - | 47 | - | 18 | 50 | M14 | 1.00 |
| PSC50xSLN20-60 | 60 | 25 | - | 49 | 40 | 20 | 52 | M16 | 1.00 |
| PSC50xSLN25-80 | 80 | 24 | 25 | 54 | 60 | 25 | 65 | M18 | 1.80 |
| PSC63xSLN6-55 | 55 | 18 | - | 35 | 25 | 6 | 25 | M6 | 0.90 |
| PSC63xSLN8-55 | 55 | 18 | - | 35 | 26 | 8 | 28 | M8 | 0.90 |
| PSC63xSLN10-60 | 60 | 20 | - | 39 | 30 | 10 | 35 | M10 | 1.00 |
| PSC63xSLN12-60 | 60 | 22.5 | - | 44 | 33 | 12 | 42 | M12 | 1.10 |
| PSC63xSLN14-60 | 60 | 22.5 | - | 44 | 33.5 | 14 | 44 | M12 | 1.10 |
| PSC63xSLN16-65 | 65 | 24 | - | 47 | 35.5 | 16 | 48 | M14 | 1.20 |
| PSC63xSLN18-65 | 65 | 24 | - | 47 | 39 | 18 | 50 | M14 | 1.20 |
| PSC63xSLN20-65 | 65 | 25 | - | 49 | 37.5 | 20 | 52 | M16 | 1.50 |
| PSC63xSLN25-80 | 80 | 24 | 25 | 54 | 58 | 25 | 65 | M18 | 1.90 |
| PSC63xSLN32-90 | 90 | 24 | 28 | 58 | 68 | 32 | 72 | M20 | 2.40 |
| PSC63xSLN40-100 | 100 | 30 | 32 | 68 | 77 | 40 | 90 | M20 | 3.70 |

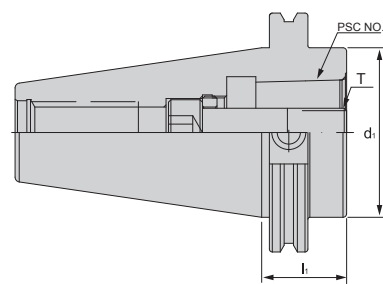
選配表 Option



• 長度單位 Unit of Length (mm)

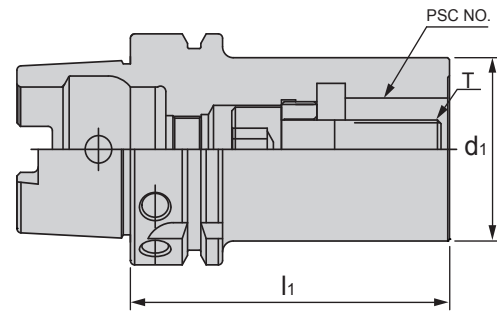


| 規格 Spec. | l_1 | d_1 | T | 扳手 Wrench | 重量 (KGS) Weight |
|-----------------|-------|-------|----------|--------------|--------------------|
| SBT40xPSC32-30 | 30 | 32 | M12x1.5P | T10-200 | 1.70 |
| SBT40xPSC40-30 | 30 | 40 | M14x1.5P | T12-200 | 1.70 |
| SBT40xPSC50-30 | 30 | 50 | M16x1.5P | T10-200 | 1.70 |
| SBT40xPSC63-75 | 75 | 63 | M20x2.0P | T12-200 | 1.90 |
| SBT50xPSC32-40 | 40 | 32 | M12x1.5P | T10-200 | 4.80 |
| SBT50xPSC40-40 | 40 | 40 | M14x1.5P | T12-200 | 4.80 |
| SBT50xPSC50-40 | 40 | 50 | M16x1.5P | T10-200 | 4.80 |
| SBT50xPSC63-100 | 100 | 63 | M20x2.0P | T12-200 | 4.68 |
| SBT50xPSC63-150 | 150 | 63 | M20x2.0P | T12-200 | 5.75 |
| SBT50xPSC63-200 | 200 | 63 | M20x2.0P | - | 6.81 |
| SBT50xPSC63-250 | 250 | 63 | M20x2.0P | - | 7.88 |
| SBT50xPSC63-300 | 300 | 63 | M20x2.0P | - | 8.73 |
| SBT50xPSC80-70 | 70 | 80 | M20x2.0P | - | 3.91 |
| SBT50xPSC80-93 | 93 | 80 | M20x2.0P | - | 4.73 |
| SBT50xPSC80-120 | 120 | 80 | M20x2.0P | - | 5.71 |
| SBT50xPSC80-183 | 183 | 80 | M20x2.0P | - | 7.98 |
| SBT50xPSC80-243 | 243 | 80 | M20x2.0P | - | 10.14 |

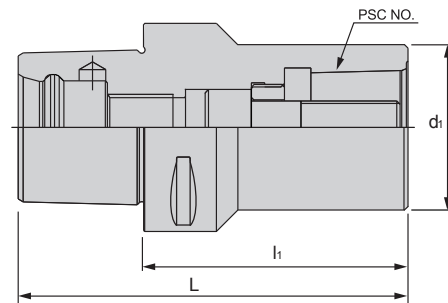


| 規格 Spec. | l_1 | d_1 | T | 重量 (KGS) Weight |
|-----------------|-------|-------|----------|--------------------|
| DAT40xPSC32-30 | 30 | 32 | M12x1.5P | 1.40 |
| DAT40xPSC40-40 | 40 | 40 | M14x1.5P | 1.50 |
| DAT40xPSC50-50 | 50 | 50 | M16x1.5P | 1.60 |
| DAT40xPSC63-90 | 90 | 63 | M20x2.0P | 2.00 |
| DAT50xPSC32-30 | 30 | 32 | M12x1.5P | 4.20 |
| DAT50xPSC40-30 | 30 | 40 | M14x1.5P | 4.30 |
| DAT50xPSC50-30 | 30 | 50 | M16x1.5P | 4.40 |
| DAT50xPSC63-30 | 30 | 63 | M20x2.0P | 4.50 |
| DAT50xPSC63-100 | 100 | 63 | M20x2.0P | 5.00 |
| DAT50xPSC63-150 | 150 | 63 | M20x2.0P | 5.20 |
| DAT50xPSC63-200 | 200 | 63 | M20x2.0P | 5.40 |
| DAT50xPSC63-250 | 250 | 63 | M20x2.0P | 5.80 |
| DAT50xPSC63-300 | 300 | 63 | M20x2.0P | 6.00 |

• 長度單位 Unit of Length (mm)

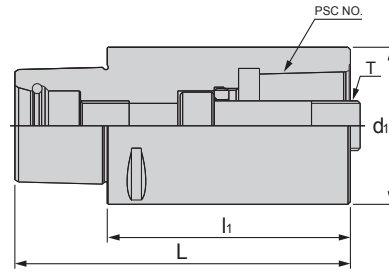


| 規格 Spec. | l_1 | d_1 | T | 扳手 Wrench | 重量 (KGS) Weight |
|-------------------|-------|-------|----------|-----------|-----------------|
| HSK63AxPSC32-75 | 75 | 32 | M12x1.5P | T6-200 | 0.92 |
| HSK63AxPSC40-80 | 80 | 40 | M14x1.5P | T6-200 | 1.06 |
| HSK63AxPSC50-90 | 90 | 50 | M16x1.5P | T6-200 | 1.39 |
| HSK100AxPSC32-80 | 80 | 32 | M12x1.5P | T10-200 | 2.25 |
| HSK100AxPSC40-90 | 90 | 40 | M14x1.5P | T10-200 | 2.43 |
| HSK100AxPSC50-100 | 100 | 50 | M16x1.5P | T6-200 | 2.80 |
| HSK100AxPSC63-110 | 110 | 63 | M20x2.0P | T10-200 | 3.41 |
| HSK100AxPSC63-150 | 150 | 63 | M20x2.0P | T10-200 | 4.18 |
| HSK100AxPSC63-200 | 200 | 63 | M20x2.0P | T10-200 | 5.14 |
| HSK100AxPSC63-250 | 250 | 63 | M20x2.0P | - | 6.10 |
| HSK100AxPSC63-300 | 300 | 63 | M20x2.0P | - | 7.07 |
| HSK100AxPSC80-120 | 120 | 80 | M20x2.0P | - | 4.93 |

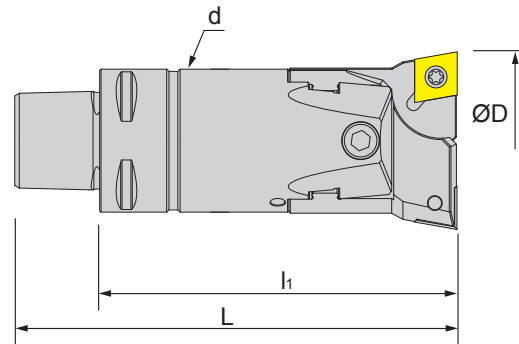


| 規格 Spec. | PSC NO. | L | l_1 | d_1 | T | 重量 (KGS) Weight |
|-----------------|---------|-----|-------|-------|----------|-----------------|
| PSC40xPSC32-55 | PSC32 | 79 | 55 | 32 | M12x1.5P | 0.50 |
| PSC40xPSC32-70 | PSC32 | 94 | 70 | 32 | M12x1.5P | 0.60 |
| PSC50xPSC32-60 | PSC32 | 84 | 60 | 32 | M12x1.5P | 0.60 |
| PSC50xPSC40-65 | PSC40 | 89 | 65 | 40 | M14x1.5P | 0.80 |
| PSC50xPSC40-85 | PSC40 | 115 | 85 | 40 | M14x1.5P | 1.10 |
| PSC63xPSC32-70 | PSC32 | 108 | 70 | 32 | M12x1.5P | 1.10 |
| PSC63xPSC40-80 | PSC40 | 118 | 80 | 40 | M14x1.5P | 1.20 |
| PSC63xPSC50-80 | PSC50 | 118 | 80 | 50 | M16x1.5P | 1.50 |
| PSC63xPSC50-110 | PSC50 | 148 | 110 | 50 | M16x1.5P | 2.20 |
| PSC80xPSC32-60 | PSC32 | 108 | 60 | 32 | M12x1.5P | 1.70 |
| PSC80xPSC40-70 | PSC40 | 118 | 70 | 40 | M14x1.5P | 1.90 |
| PSC80xPSC50-45 | PSC50 | 93 | 45 | 50 | M16x1.5P | 1.50 |
| PSC80xPSC50-80 | PSC50 | 128 | 80 | 50 | M16x1.5P | 2.20 |
| PSC80xPSC63-55 | PSC63 | 103 | 55 | 63 | M20x2.0P | 2.30 |
| PSC80xPSC63-80 | PSC63 | 128 | 80 | 63 | M20x2.0P | 2.50 |
| PSC80xPSC63-120 | PSC63 | 168 | 120 | 63 | M20x2.0P | 4.00 |

• 長度單位 Unit of Length (mm)



| 規格 Spec. | PSC NO. | L | l ₁ | d ₁ | T | 重量 (KGS) Weight |
|-----------------|---------|-----|----------------|----------------|----------|-----------------|
| PSC32xPSC32-60 | PSC32 | 79 | 60 | 32 | M12x1.5P | 0.40 |
| PSC32xPSC32-80 | PSC32 | 99 | 80 | 32 | M12x1.5P | 0.50 |
| PSC40xPSC40-60 | PSC40 | 84 | 60 | 40 | M14x1.5P | 0.50 |
| PSC40xPSC40-80 | PSC40 | 104 | 80 | 40 | M14x1.5P | 0.70 |
| PSC50xPSC50-80 | PSC50 | 110 | 80 | 50 | M16x1.5P | 1.10 |
| PSC50xPSC50-100 | PSC50 | 130 | 100 | 50 | M16x1.5P | 1.40 |
| PSC63xPSC63-80 | PSC63 | 118 | 80 | 63 | M20x2.0P | 2.00 |
| PSC63xPSC63-100 | PSC63 | 138 | 100 | 63 | M20x2.0P | 2.20 |
| PSC63xPSC63-140 | PSC63 | 178 | 140 | 63 | M20x2.0P | 3.18 |
| PSC63xPSC63-200 | PSC63 | 238 | 200 | 63 | M20x2.0P | 4.7 |
| PSC63xPSC63-300 | PSC63 | 338 | 300 | 63 | M20x2.0P | 6.88 |
| PSC80xPSC80-65 | PSC80 | 113 | 65 | 80 | M20x2.0P | 3.10 |
| PSC80xPSC80-100 | PSC80 | 148 | 100 | 80 | M20x2.0P | 3.60 |
| PSC80xPSC80-125 | PSC80 | 173 | 125 | 80 | M20x2.0P | 4.60 |

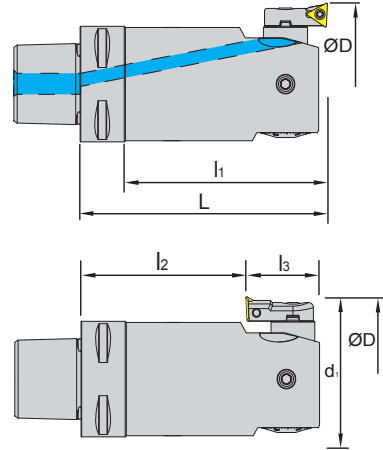


| 規格 Spec. | øD 搪孔範圍 Boring Range | | L | l ₁ | d | 刀片 Insert | 重量 (KGS) Weight |
|----------------------|----------------------|------|-----|----------------|----|-----------|-----------------|
| | Min. | Max. | | | | | |
| PSC32 x PCK3950-80 | 39 | 50 | 99 | 80 | 32 | CC..09T3 | 0.49 |
| PSC40 x PCK4965-82 | 49 | 65 | 106 | 82 | 42 | CC..1204 | 0.49 |
| PSC50 x PCK6382-92 | 63 | 82 | 122 | 92 | 54 | CC..1204 | 0.70 |
| PSC63 x PCK80102-140 | 80 | 102 | 178 | 140 | 68 | CC..1204 | 3.60 |

配件表 Accessories

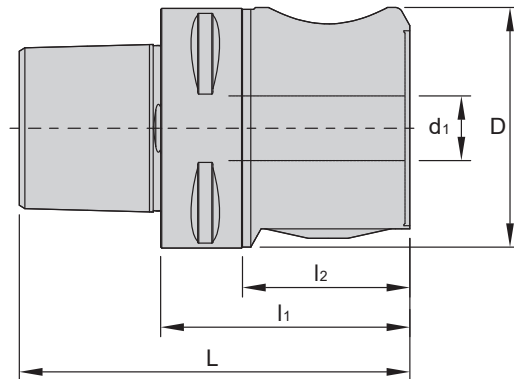
| 刀片 Insert | 螺絲 Screw | 扳手 Wrench | 扭力值 (N.m) Torque |
|-----------|--------------|-----------|------------------|
| CC..09T3 | M4-10-5.7-60 | T15 | 3.0 |
| CC..1204 | M5-11-7.5-60 | T20 | 5.0 |

• 長度單位 Unit of Length (mm)



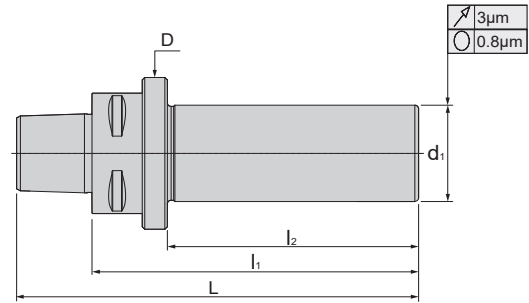
| 規格 Spec. | øD 搪孔範圍 Boring Range(正搪) | | | | | øD 搪孔範圍 Boring Range(背搪) | | | | | 刀片座 Insert Seat | 刀片 Insert | 螺絲 Screw | 重量 (KGS) Weight | | | |
|-----------------|----------------------------|------|-----|----------------|----------------|----------------------------|------|----------------|----------------|----------------|---|----------------------|-----------------|-----------------------|--|--|------|
| | Min. | Max. | L | l ₁ | l ₂ | Min. | Max. | l ₂ | l ₃ | d ₁ | | | | | | | |
| PSC32xPMB32-85 | 32 | 42 | 104 | 85 | 69 | - | - | - | - | - | SIB32-1/SIC32-1 SIB32-2/SIC32-2 SIB32-3/SIC32-3 | TB..0601 TP..0802 | M2-5.0-2.7-60 | 0.21 | | | |
| | 41 | 51 | | | | 46 | 51 | 55 | 25 | 16 | | | | 0.21 | | | |
| | 50 | 60 | | | | 50 | 60 | | | | | | | 0.21 | | | |
| PSC40xPMB41-102 | 41 | 54 | 126 | 102 | 81 | - | - | - | - | - | SIB41-1/SIC41-1 SIB41-2/SIC41-2 SIB41-3/SIC41-3 | TP..0902 TC..1102 | M2.5-6.0-3.5-60 | 0.40 | | | |
| | 50 | 63 | | | | 53 | 63 | 70 | 29 | 20 | | | | 0.40 | | | |
| | 61 | 74 | | | | 61 | 74 | | | | | | | 0.40 | | | |
| PSC50xPMB53-112 | 53 | 70 | 142 | 112 | 91.5 | 62 | 70 | 74 | 34 | 25.5 | SIB53-1/SIC53-1 SIB53-2/SIC53-2 SIB53-3/SIC53-3 | TP..0902 TC..1102 | M2.5-6.0-3.5-60 | 1.10 | | | |
| | 65 | 82 | | | | 65 | 82 | | | | | | | | | | 1.10 |
| | 78 | 95 | | | | 78 | 95 | | | | | | | | | | 1.10 |
| PSC63xPMB68-140 | 68 | 100 | 178 | 140 | 117.5 | 80 | 100 | 90.8 | 45.2 | 32.5 | SIB68-1/SIC68-1 SIB68-2/SIC68-2 SIB68-3/SIC68-3 | TP..0902 TC..1102 | M2.5-6.0-3.5-60 | 1.74 | | | |
| | 94 | 126 | | | | 94 | 126 | | | | | | | | | | 1.74 |
| | 118 | 150 | | | | 118 | 150 | | | | | | | | | | 1.74 |

※ 不含 SIB/SIC 刀片座 · 刀片座需另外購買 Not including SIB/SIC insert seat, insert seat need purchase separately.

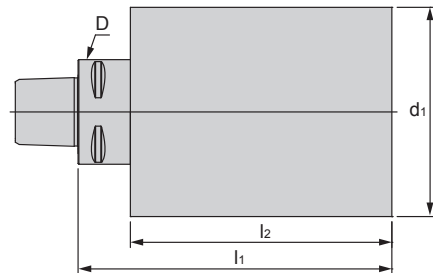


| 規格 Spec. | L | l ₁ | l ₂ | D | d ₁ | 重量 (KGS) Weight |
|------------------|------|----------------|----------------|------|----------------|-----------------------|
| PSC40xPBJ10-48.5 | 72.5 | 48.5 | 28.5 | 39 | 10 | 0.49 |
| PSC50xPBJ12-56 | 86 | 56 | 36 | 50 | 12 | 0.91 |
| PSC63xPBJ16-67 | 105 | 67 | 45 | 63.5 | 16 | 1.76 |

• 長度單位 Unit of Length (mm)



| 規格 Spec. | L | l ₁ | l ₂ | D | d ₁ | 重量 (KGS) Weight |
|----------------|-----|----------------|----------------|----|----------------|-----------------|
| PSC32-TS180L-P | 180 | 165 | 32 | 20 | 0.41 | 0.41 |
| PSC40-TS180L-P | 180 | 160 | 40 | 32 | 1.08 | 1.08 |
| PSC50-TS180L-P | 180 | 150 | 63 | 32 | 1.38 | 1.38 |
| PSC50-TS245L-P | 245 | 215 | 63 | 32 | 1.7 | 1.70 |
| PSC50-TS280L-P | 280 | 250 | 63 | 40 | 2.12 | 2.12 |
| PSC63-TS182L-P | 182 | 150 | 75 | 40 | 1.93 | 1.93 |
| PSC63-TS232L-P | 232 | 200 | 75 | 40 | 4.02 | 4.02 |
| PSC63-TS352L-P | 352 | 320 | 75 | 40 | 2.93 | 2.93 |



| 規格 Spec. | l ₁ | l ₂ | d ₁ | D | 重量 (KGS) Weight |
|-------------------|----------------|----------------|----------------|----|-----------------|
| PSC32xØ32-90 | 90 | - | 32 | 32 | 0.53 |
| PSC32xØ60-90 | 90 | 75 | 60 | 32 | 1.65 |
| PSC40xØ40-120 | 120 | - | 40 | 40 | 1.30 |
| PSC40xØ80-120 | 120 | 100 | 80 | 40 | 4.12 |
| PSC50xØ50-150 | 150 | - | 50 | 50 | 2.38 |
| PSC50xØ95-150 | 150 | 130 | 95 | 50 | 7.60 |
| PSC63xØ63-180 | 180 | - | 63 | 63 | 4.56 |
| PSC63xØ120-180 | 180 | 158 | 120 | 63 | 14.5 |
| PSC80 xØ80 - 200 | 200 | - | 80 | 80 | 8.30 |
| PSC80 xØ145 - 200 | 200 | 170 | 145 | 80 | 23.3 |

• 長度單位 Unit of Length (mm)

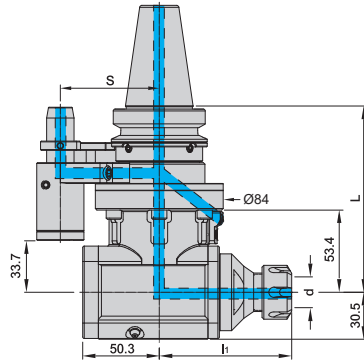


Fig.1

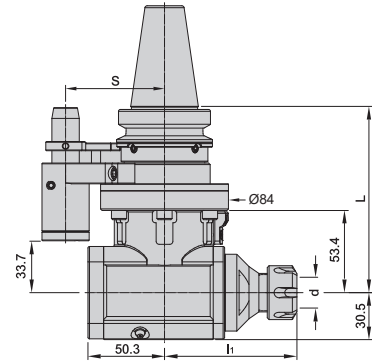


Fig.2

特點 Feature

- 適用加工：鑽孔、攻牙
- 建議切削深度 ≤ 2mm (建議值·需視設備剛性調整)
- 最高轉速：4000rpm
- 最大扭力值：20N·m
- 心軸轉向：與主軸反向
- 可適用 ATC 自動換刀系統

- Applicable for drilling, tapping.
- Suggested $A_p \leq 2\text{mm}$.
- Max. revolution : 4000 rpm.
- Max. torque : 20N·m.
- Mandrel rotation direction: same as machine spindle.
- Can be used for ATC.

| 規格 Spec. | L | l ₁ | S | d | 扭力值 (N.m) Torque | 筒夾 Collet | Fig. | 重量 (KGS) Weight |
|--------------------|-----|----------------|----|--------|------------------|-----------|------|-----------------|
| BT40 x SAM16EX-120 | 120 | 87 | 65 | Ø1~Ø10 | 20 N·m | ER16 | 2 | 6.40 |
| BT40 x SAM20EX-120 | 120 | 87 | 65 | Ø1~Ø13 | 20 N·m | ER20 | 2 | 6.40 |
| BT40 x SAM25EX-120 | 120 | 87 | 65 | Ø1~Ø16 | 20 N·m | ER25 | 2 | 6.40 |
| BT40 x SAM32EX-120 | 120 | 82 | 65 | Ø2~Ø20 | 20 N·m | ER32 | 2 | 6.44 |
| BT50 x SAM16EX-135 | 135 | 87 | 80 | Ø1~Ø10 | 20 N·m | ER16 | 2 | 6.40 |
| BT50 x SAM20EX-135 | 135 | 87 | 80 | Ø1~Ø13 | 20 N·m | ER20 | 2 | 6.40 |
| BT50 x SAM25EX-135 | 135 | 87 | 80 | Ø1~Ø16 | 20 N·m | ER25 | 2 | 6.40 |
| BT50 x SAM32EX-135 | 135 | 82 | 80 | Ø2~Ø20 | 20 N·m | ER32 | 2 | 6.44 |
| BT40 x SAM16E-120 | 120 | 87 | 65 | Ø1~Ø10 | 20 N·m | ER16 | 1 | 6.40 |
| BT40 x SAM20E-120 | 120 | 87 | 65 | Ø1~Ø13 | 20 N·m | ER20 | 1 | 6.40 |
| BT40 x SAM25E-120 | 120 | 87 | 65 | Ø1~Ø16 | 20 N·m | ER25 | 1 | 6.40 |
| BT40 x SAM32E-120 | 120 | 82 | 65 | Ø2~Ø20 | 20 N·m | ER32 | 1 | 6.44 |
| BT50 x SAM16E-135 | 135 | 87 | 80 | Ø1~Ø10 | 20 N·m | ER16 | 1 | 6.40 |
| BT50 x SAM20E-135 | 135 | 87 | 80 | Ø1~Ø13 | 20 N·m | ER20 | 1 | 6.40 |
| BT50 x SAM25E-135 | 135 | 87 | 80 | Ø1~Ø16 | 20 N·m | ER25 | 1 | 6.40 |
| BT50 x SAM32E-135 | 135 | 82 | 80 | Ø2~Ø20 | 20 N·m | ER32 | 1 | 6.44 |

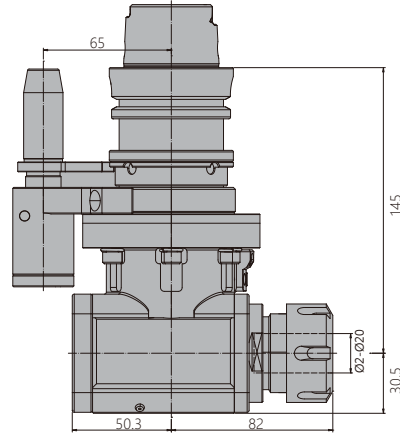
※ 歡迎詢問 SBT 雙面拘束形式 Welcome to ask SBT DualDRIVE+ type.

選配表 Option

| 拉頭 Pull Stud | 筒夾 Collet | 螺帽 Nut | 扳手 Spanner | 定位塊 Fix block |
|--------------|-----------|-----------|------------|---------------|
| | | | | |
| B646-B647 | B612/B627 | B634/B639 | B650/B653 | B573-B574 |



• 長度單位 Unit of Length (mm)



特點 Feature

- 適用加工：鑽孔、攻牙。
- 建議切削深度 $\leq 2\text{mm}$ (建議值，需視設備剛性調整)。
- 最高轉速：4000rpm。
- 最大扭力值：20N·m。
- 可耐最高水壓：7kgf/cm²。
- 心軸轉向：與主軸反向。
- 可適用 ATC 自動換刀系統。
- 針對不同機械設備提供多元化冷卻出水系統供客戶作選擇：
 - (1) 中心入水刀具出水
 - (2) 中心入水給水油珠出水
 - (3) 側邊定位塊入水刀具出水
 - (4) 側邊定位塊入水給水油珠出水

- Applicable for drilling, tapping.
- Suggested $A_p \leq 2\text{mm}$.
- Max. revolution : 4000 rpm.
- Max. torque : 20N·m.
- Max. water pressure : 7kgf/cm²(100PSI).
- Rotating direction opposite to machine spindle.
- Can be used for ATC.
- According to different machine devices, it is equipped with versatile coolant systems for customer to choose from.
 - (1) Coolant feed from the center and exhaust from the cutting tool.
 - (2) Coolant feed from the center and exhaust from the oil ball.
 - (3) Coolant feed from stop block and exhaust from cutting tool.
 - (4) Coolant feed from the stop block and exhaust from oil ball.

| 規格 Spec. | L | l ₁ | S | d | 扭力值 (N.m) Torque | 重量 (KGS) Weight |
|------------------------|-----|----------------|----|--------|------------------|-----------------|
| HSK63A x SAM16E - 145 | 145 | 87 | 65 | Ø1~Ø10 | 20 N·m | 6.40 |
| HSK63A x SAM20E - 145 | 145 | 87 | 65 | Ø1~Ø13 | 20 N·m | 6.40 |
| HSK63A x SAM25E - 145 | 145 | 87 | 65 | Ø1~Ø16 | 20 N·m | 6.40 |
| HSK63A x SAM32E - 145 | 145 | 82 | 65 | Ø2~Ø20 | 20 N·m | 6.44 |
| HSK63A x SAM16EX - 145 | 145 | 87 | 65 | Ø1~Ø10 | 20 N·m | 6.40 |
| HSK63A x SAM20EX - 145 | 145 | 87 | 65 | Ø1~Ø13 | 20 N·m | 6.40 |
| HSK63A x SAM25EX - 145 | 145 | 87 | 65 | Ø1~Ø16 | 20 N·m | 6.40 |
| HSK63A x SAM32EX - 145 | 145 | 82 | 65 | Ø2~Ø20 | 20 N·m | 6.44 |

角度頭
ANGLE HEAD

選配表 Option

| 拉頭 Pull Stud | 筒夾 Collet | 螺帽 Nut | 扳手 Spanner | 定位塊 Fix block |
|--------------|-----------|-----------|------------|---------------|
| | | | | |
| B646-B647 | B612/B627 | B634/B639 | B650/B653 | B573-B574 |



• 長度單位 Unit of Length (mm)

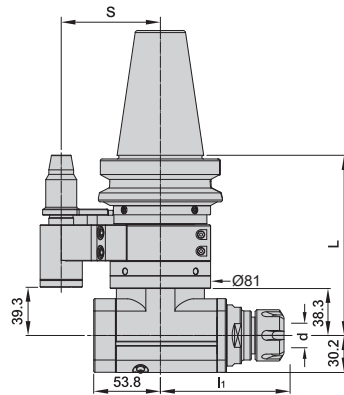


Fig.1

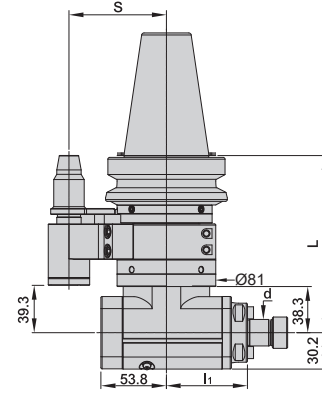


Fig.2

特點 Feature

- 適用加工：鑽孔、攻牙、銑削
- 建議切削深度 $\leq 3\text{mm}$ (建議值，需視設備剛性調整)。
- 最高轉速：3000rpm。
- 最大扭力值：25N·m。
- 心軸轉向：與主軸反向。
- 可適用 ATC 自動換刀系統。

- Applicable for drilling, tapping, and milling.
- Suggested $A_p \leq 3\text{mm}$.
- Max. revolution : 3000 rpm.
- Max. torque : 25N-m.
- Rotating direction opposite to machine spindle.
- Can be used for ATC.

| 規格 Spec. | L | l_1 | S | d | 扭力值 (N.m) Torque | 筒夾 Collet | Fig. | 重量 (KGS) Weight |
|----------------------|-----|-------|----|---------------------------|------------------|-----------|------|-----------------|
| BT40 x SAC16E-130 | 130 | 89.6 | 65 | $\text{Ø}1\sim\text{Ø}10$ | 25 N-m | ER16 | 1 | 6.40 |
| BT40 x SAC20E-130 | 130 | 91 | 65 | $\text{Ø}1\sim\text{Ø}13$ | 25 N-m | ER20 | 1 | 6.40 |
| BT40 x SAC25E-130 | 130 | 92 | 65 | $\text{Ø}1\sim\text{Ø}16$ | 25 N-m | ER25 | 1 | 6.40 |
| BT40 x SAC32E-130 | 130 | 96 | 65 | $\text{Ø}3\sim\text{Ø}16$ | 25 N-m | ER32 | 1 | 6.44 |
| BT50 x SAC16E-147 | 147 | 89.6 | 80 | $\text{Ø}1\sim\text{Ø}10$ | 25 N-m | ER16 | 1 | 8.40 |
| BT50 x SAC20E-147 | 147 | 91 | 80 | $\text{Ø}1\sim\text{Ø}13$ | 25 N-m | ER20 | 1 | 8.40 |
| BT50 x SAC25E-147 | 147 | 92 | 80 | $\text{Ø}1\sim\text{Ø}16$ | 25 N-m | ER25 | 1 | 8.40 |
| BT50 x SAC32E-147 | 147 | 96 | 80 | $\text{Ø}3\sim\text{Ø}16$ | 25 N-m | ER32 | 1 | 8.44 |
| BT40 x SAC25.4FA-130 | 130 | 66 | 65 | 25.4 | 25 N-m | - | 2 | 6.54 |
| BT40 x SAC22FB-130 | 130 | 66 | 65 | 22 | 25 N-m | - | 2 | 6.54 |
| BT50 x SAC25.4FA-147 | 147 | 66 | 80 | 25.4 | 25 N-m | - | 2 | 8.54 |
| BT50 x SAC22FB-147 | 147 | 66 | 80 | 22 | 25 N-m | - | 2 | 8.54 |

銑削頭
ANGLE HEAD

選配表 Option

| 拉頭 Pull Stud | 筒夾 Collet | 螺帽 Nut | 扳手 Spanner | 定位塊 Fix block |
|--------------|-----------|-----------|------------|---------------|
| | | | | |
| B646-B647 | B612/B627 | B634/B639 | B650/B653 | B573-B574 |



• 長度單位 Unit of Length (mm)

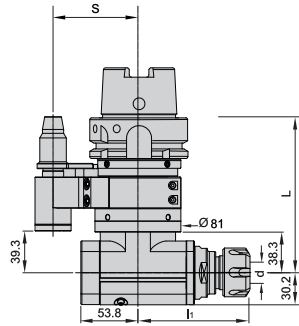


Fig.1

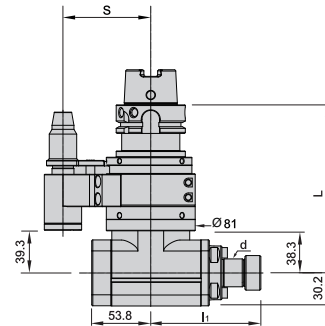


Fig.2

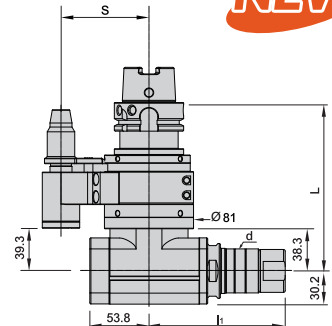


Fig.3

特點 Feature

- 適用鑽孔、攻牙、銑削
- 最高轉速：3000rpm
- 建議最大切深 ≤4mm

- Applicable for drilling, tapping, and milling.
- Max. revolution: 3000 rpm.
- Suggest $A_p \leq 4\text{mm}$

| 規格 Spec. | L | l_1 | S | d | 筒夾 Collet | 扭力值 (N.m) Torque | Fig. | 重量 (KGS) Weight |
|----------------------------|-----|-------|----|------|-----------|------------------|------|-----------------|
| HSK 63A x SAC16E - 155 | 155 | 89.6 | 65 | 1~10 | ER16 | 25N-m | 1 | 6.40 |
| HSK 63A x SAC20E - 155 | 155 | 91 | 65 | 1~13 | ER20 | 25N-m | 1 | 6.40 |
| HSK 63A x SAC25E - 155 | 155 | 92 | 65 | 1~16 | ER25 | 25N-m | 1 | 6.40 |
| HSK 63A x SAC32E - 155 | 155 | 96 | 65 | 3~16 | ER32 | 25N-m | 1 | 6.40 |
| HSK 100A x SAC16E - 151 | 151 | 89.6 | 80 | 1~10 | ER16 | 25N-m | 1 | 8.40 |
| HSK 100A x SAC20E - 151 | 151 | 91 | 80 | 1~13 | ER20 | 25N-m | 1 | 8.40 |
| HSK 100A x SAC25E - 151 | 151 | 92 | 80 | 1~16 | ER25 | 25N-m | 1 | 8.40 |
| HSK 100A x SAC32E - 151 | 151 | 96 | 80 | 3~16 | ER32 | 25N-m | 1 | 8.44 |
| HSK 63A x SAC25.4FA - 155 | 155 | 66 | 65 | 25.4 | - | 25N-m | 2 | 6.54 |
| HSK 63A x SAC22FB - 155 | 155 | 66 | 65 | 22 | - | 25N-m | 2 | 6.54 |
| HSK 100A x SAC25.4FA - 151 | 151 | 66 | 80 | 25.4 | - | 25N-m | 2 | 8.54 |
| HSK 100A x SAC22FB - 151 | 151 | 66 | 80 | 22 | - | 25N-m | 2 | 8.54 |
| HSK 63A x SAC22SC - 155 | 155 | 67.5 | 65 | 22 | - | 25N-m | 3 | 8.40 |
| HSK 63A x SAC25.4SC - 155 | 155 | 67.5 | 65 | 25.4 | - | 25N-m | 3 | 8.40 |
| HSK 100A x SAC22SC - 151 | 151 | 67.5 | 80 | 22 | - | 25N-m | 3 | 8.40 |
| HSK 100A x SAC25.4SC - 151 | 151 | 67.5 | 80 | 25.4 | - | 25N-m | 3 | 8.40 |

角度頭
ANGLE HEAD

選配表 Option

| 拉頭 Pull Stud | 筒夾 Collet | 螺帽 Nut | 扳手 Spanner | 定位塊 Fix block |
|--------------|-----------|-----------|------------|---------------|
| | | | | |
| B646-B647 | B612/B627 | B634/B639 | B650/B653 | B573-B574 |

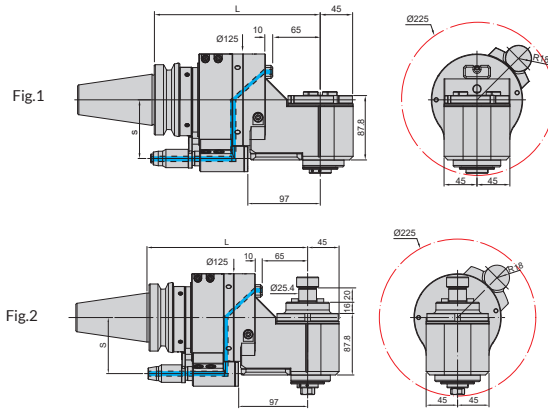


• 長度單位 Unit of Length (mm)



BT/SAR 大鋼炮銑削頭

BT/SAR ANGLE HEAD HOLDER FOR HEAVY-DUTY CUTTING



特點 Feature

- 適用加工：鑽孔、攻牙、銑削。
- 建議切削深度 ≤ 4mm (建議值，需視設備剛性調整)。
- 最高轉速：3000rpm。
- 最大扭力值：50N·m。
- 可耐最高水壓：7kgf/cm²。
- 心軸轉向：與主軸同向。
- 臥式、龍門機床可適用 ATC 自動換刀系統。
- 出水方式：側邊定位塊入水給水油珠出水

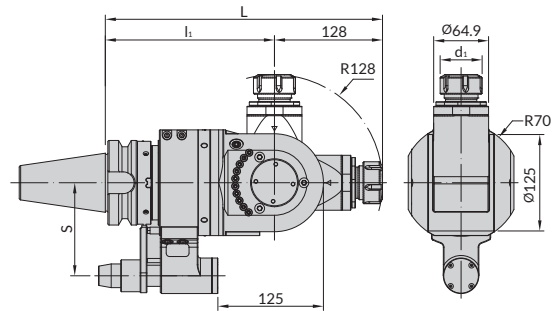
- Applicable for drilling, tapping, and milling.
- Suggested Ap ≤ 4mm.
- Max. revolution : 3000 rpm.
- Max. torque : 50N·m.
- Mandrel rotation direction: same as machine spindle
- Mandrel rotation direction: same as machine spindle, can be used for ATC.
- Coolant feed from the stop block and exhaust from oil ball.

| 規格 Spec. | L | S | 扭力值 (N.m) Torque | Fig. | 重量 (KGS) Weight |
|-------------------------|-----|-----|------------------|------|-----------------|
| BT50xSAR50/SBT30-230 | 230 | 80 | 50 N·m | 1 | 16.1 |
| BT50xSAR50/SBT30-230S | 230 | 110 | 50 N·m | 1 | 16.1 |
| BT50xSAR50/FMA25.4-230 | 230 | 80 | 50 N·m | 2 | 16.1 |
| BT50xSAR50/FMA25.4-230S | 230 | 110 | 50 N·m | 2 | 16.1 |



BT/SAU 萬向銑削頭

BT/SAU ANGLE HEAD HOLDER(UNIVERSAL TYPE)



特點 Feature

- 齒輪比為 1:1
- 最高轉速：3000rpm
- 最大扭力：40N.m
- 建議切深 ≤ 4mm
- 主軸角度可調整 0°~90°
- 角度調整間距 1°

- Gear ratio 1:1.
- Max. revolution: 3000rpm.
- Max. torque: 40 N·m.
- Suggested Ap ≤ 4mm.
- Adjustable spindle angle from 0° to 90° on inclined surfaces.
- Adjustable angle increment: 1°.

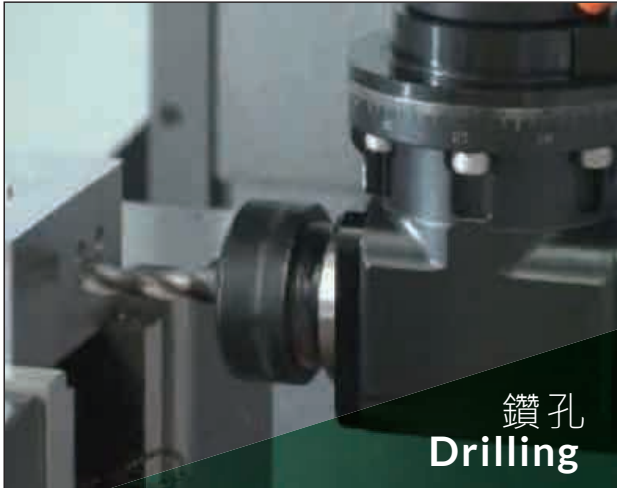
| 規格 Spec. | L | l ₁ | S | 夾持範圍 Clamping Range | 扭力值 (N.m) Torque | 筒夾 Collet | 重量 (KGS) Weight |
|-------------------|-----|----------------|-----|---------------------|------------------|-----------|-----------------|
| BT50 x SAU32E-328 | 328 | 200 | 110 | 2~20 | 40 N·m | ER32 | 20.9 |

| 拉頭 Pull Stud | 筒夾 Collet | 螺帽 Nut | 扳手 Spanner | 定位塊 Fix block |
|--------------|-----------|-----------|------------|---------------|
| | | | | |
| B646-B647 | B612/B627 | B634/B639 | B650/B653 | B573-B574 |



• 長度單位 Unit of Length (mm)

最大切削扭力 Max. Torque: 20N.m



鑽孔
Drilling

BT40xSAM32EX-120

工件材料Workpiece material: S45C(Steels)

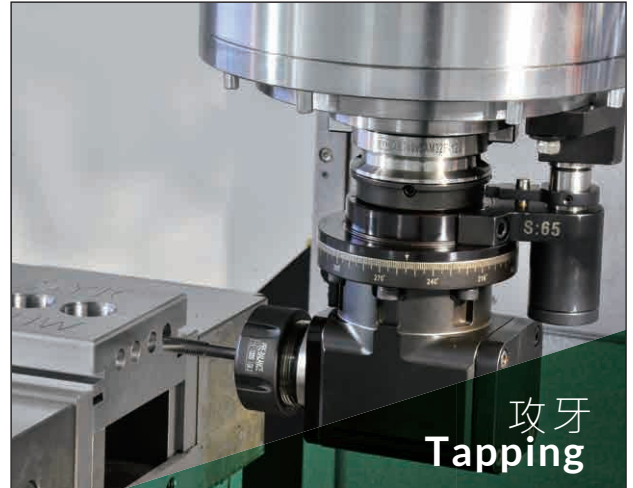
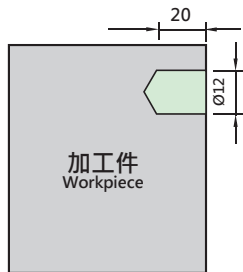
刀具Tool: Ø12高速鋼鑽頭
(Ø12 High Speed Steels Drills)

切削速度(Vc): 31m/min

轉速(S): 1000rpm

進給(Vf): 100mm/min

切削深度(Ap): 20mm



攻牙
Tapping

BT40xSAM32EX-120

工件材料Workpiece material: S45C(Steels)

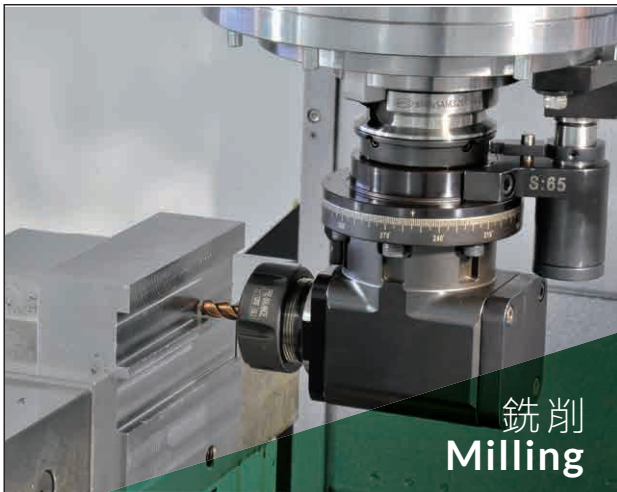
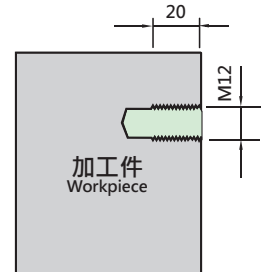
刀具Tool: M12x1.75P絲攻
(M12x1.75P Tap)

切削速度(Vc): 7.53m/min

轉速(S): 200rpm

進給(Vf): 350mm/min

切削深度(Ap): 20mm



銑削
Milling

BT40xSAM32EX-120

工件材料Workpiece material: S45C(Steels)

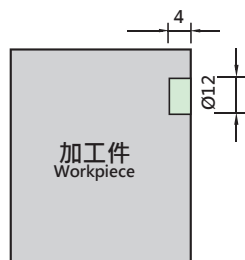
刀具Tool: Ø12鎢鋼立銑刀
(Ø12 End mills)

切削速度(Vc): 18.8m/min

轉速(S): 500rpm

進給(Vf): 150mm/min

切削深度(Ap): 4mm



銑削
Milling

BT40xSAM25.4SCAX-120

工件材料Workpiece material: S45C(Steels)

刀具Tool: SDC-100X08A25.4

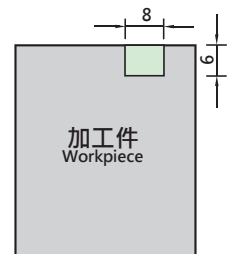
切削速度(Vc): 120m/min

轉速(S): 380rpm

進給(Vf): 90mm/min

切削深度(Ap): 6mm

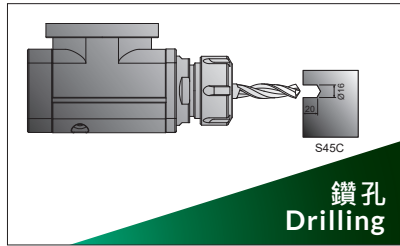
切削深度(Ae): 8mm



角度頭
ANGLE HEAD

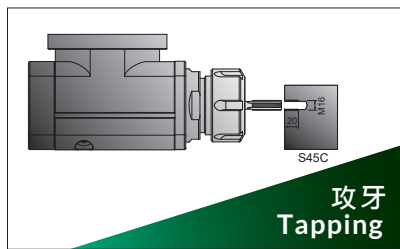
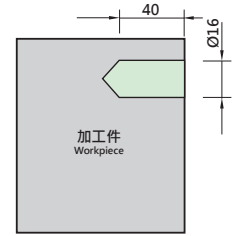
• 長度單位 Unit of Length (mm)

最大切削扭力
Max. Torque
25N.m



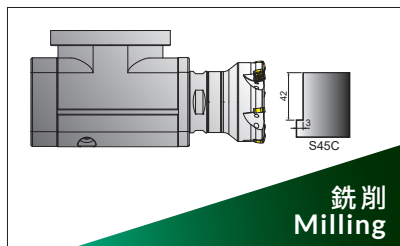
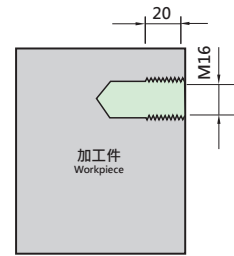
BT50xSAC32E-147

工件材料Workpiece material: S45C(Steels)
 刀具Tool: Ø16高速鋼鑽頭
 (Ø16 High Speed Steels Drills)
 切削速度(Vc): 30.14m/min
 轉速(S): 600rpm
 進給(Vf): 96mm/min
 切削深度(Ap): 40mm



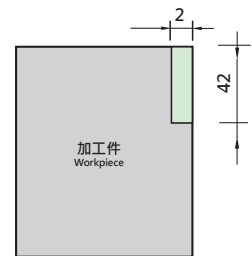
BT50xSAC32E-147

工件材料Workpiece material: S45C(Steels)
 刀具Tool: M16x2.0P絲攻
 (M16x2.0P Tap)
 切削速度(Vc): 10.05m/min
 轉速(S): 200rpm
 進給(Vf): 400mm/min
 切削深度(Ap): 20mm



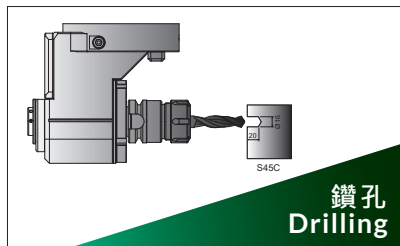
BT50xSAC25.4FA-147

工件材料Workpiece material: S45C(Steels)
 刀具Tool: Ø50面銑刀
 (Ø50 Face mill)
 切削速度(Vc): 65.94m/min
 轉速(S): 500rpm
 進給(Vf): 150mm/min
 切削深度(Ap): 2mm
 切削寬度(Ae): 42mm



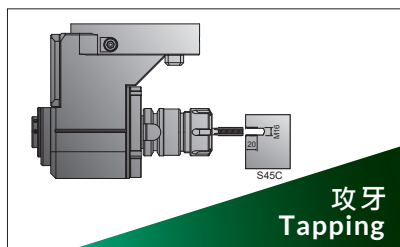
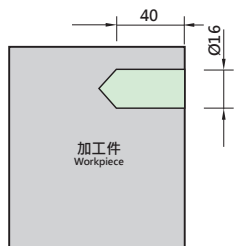
角頭
ANGLE HEAD

最大切削扭力
Max. Torque
30N.m



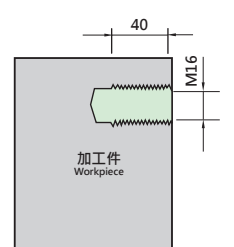
BT50xSAR50/SBT30-230 BT30-ER32-50

工件材料Workpiece material: S45C(Steels)
 刀具Tool: Ø16高速鋼鑽頭
 (Ø16 High speed steels drills)
 切削速度(Vc): 31m/min
 轉速(S): 1000rpm
 進給(Vf): 100mm/min
 切削深度(Ap): 40mm

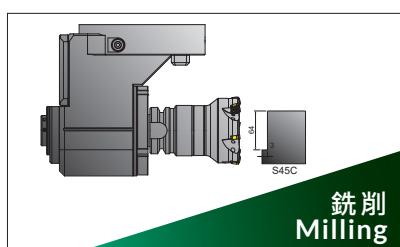


BT50xSAR50/SBT30-230 BT30-ER32-50

工件材料Workpiece material: S45C(Steels)
 刀具Tool: M16x2.0P絲攻
 (M16x2.0P Tap)
 切削速度(Vc): 10.05m/min
 轉速(S): 200rpm
 進給(Vf): 400mm/min
 切削深度(Ap): 40mm

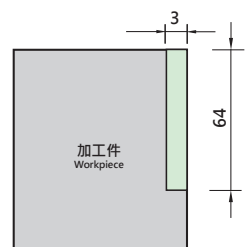


適用：龍門銑床
Applicable: gantry
milling machine



BT50xSAR50/SBT30-230 BT30-FMA25.4-45

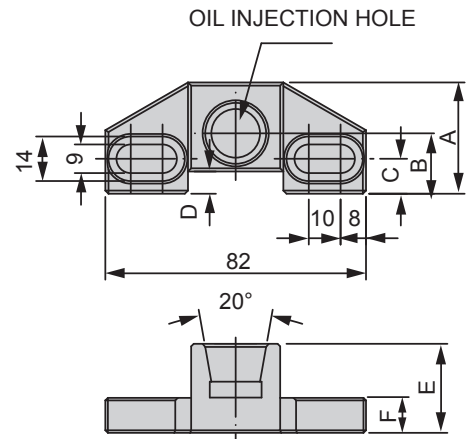
工件材料Workpiece material: S45C(Steels)
 刀具Tool: Ø80面銑刀
 (Ø80 Face mill)
 切削速度(Vc): 80.38m/min
 轉速(S): 400rpm
 進給(Vf): 360mm/min
 切削深度(Ap): 3mm
 切削寬度(Ae): 64mm



• 長度單位 Unit of Length (mm)

SFT 定位塊 (錐度梢)

SFT FIXED BLOCK (TAPPER PIN)



特點 Feature

- 定位塊需配合定位梢形式購買
- 購買 SFB 的定位塊為素材，客戶可自行加工為機台所需之形式
- 定位塊可以裝置在軸上，但要固定在機器上，才不會妨礙到 ATC 臂，固定方法因機台而異，因此裝置前應詢問機器製造商其適合的定位塊裝置方法
- 接受特殊規格訂製，下單之前請詳細提供並填寫相關尺寸，填寫表在 A068

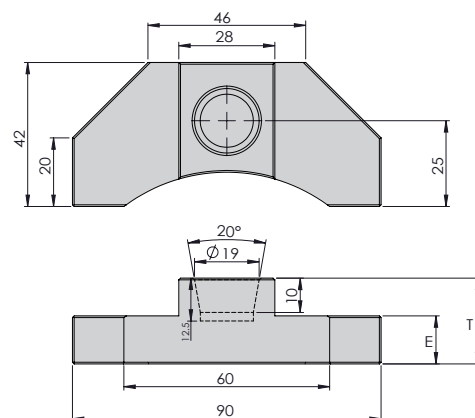
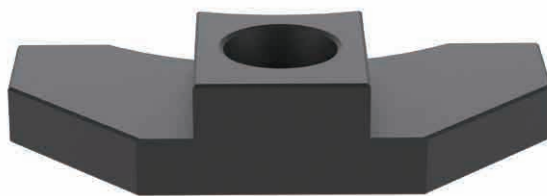
- Applicate for oil hole holder and angle head holder.
- SFB-1 Fixed block is blank, and customers can process the fixed block by themselves to fit the machines.
- The fixed block can be installed on the spindle, but it must be fastened on the machines, so that it won't interfere with the ATC, before installation, it's necessary to consult the machine manufacturers about the correct installation methods.
- Special type is accepted. Before making a purchase order, please informed detailed dimensions by filling out the form in A068

| 規格 Spec. | 適用規格 Suitable Type | A | B | C | D | E | F | T | 重量 (KGS) Weight |
|----------|---|----|------|----|---|----|----|-----------|-----------------|
| SFT-40 | #40 定位塊 (錐度梢) #40 Fixed block (tapper pin) | 40 | 18.5 | 10 | 5 | 30 | 13 | NPT1/4-18 | 0.30 |
| SFT-50 | #50 定位塊 (錐度梢) #50 Fixed block (tapper pin) | 34 | 19 | 11 | 7 | 35 | 15 | NPT1/4-18 | 0.32 |

- 主要用於銑削加工、鑽孔和攻牙 Used for milling, drilling and tapping.

SFT 定位塊素材 (錐度梢)

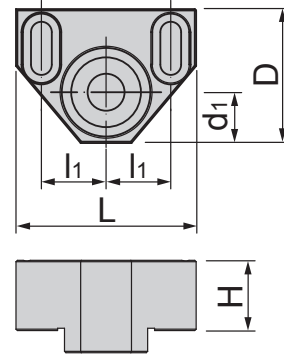
SFT FIXED BLOCK BLANK (TAPPER PIN)



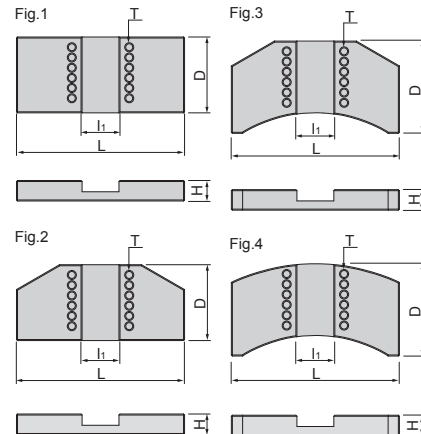
角度頭
ANGLE HEAD

| 規格 Spec. | E | T | 重量 (KGS) Weight |
|----------|----|----|-----------------|
| SFT-19L | 10 | 19 | - |
| SFT-22L | 12 | 22 | - |
| SFT-25L | 14 | 25 | - |

• 長度單位 Unit of Length (mm)



| 規格 Spec. | D | d ₁ | L | l ₁ | H | 重量 (KGS) Weight |
|----------|----|----------------|----|----------------|------|-----------------|
| SFO-A | 29 | 11 | 39 | 14 | 15.2 | 0.08 |



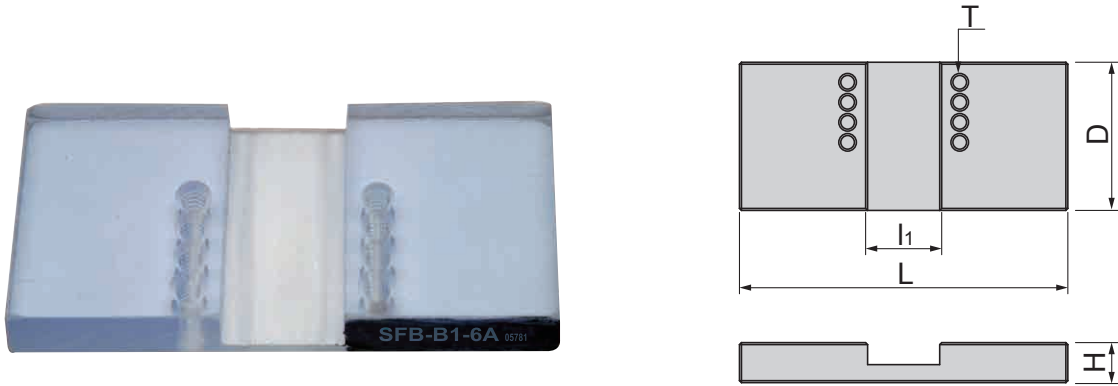
特點 Feature

- 定位塊可以裝在主軸上，但要固定在機器上，才不會妨礙到 ATC 換刀臂，固定方法因機台而異，因此，裝置前應詢問機器製造商其適合的定位塊裝置方法
- 接受特殊規格訂製，下單之前請詳細提供並填寫相關尺寸，填寫表在 A068

- The fixed block can be installed on the spindle but it has to be a fixed installation so that it will not interfere with the ATC (Automatic Tool Changer). It is important to consult your machine manufacturer first before installing.
- Special order is accepted but fill out the dimension form on A068 first before ordering.

| 規格 Spec. | D | L | l ₁ | H | T | Fig. | 重量 (KGS) Weight |
|----------|----|----|----------------|----|----|------|-----------------|
| SFO-1-10 | 37 | 82 | 18 | 10 | M4 | 1 | 0.20 |
| SFO-1-15 | 37 | 82 | 18 | 15 | M4 | 1 | 0.32 |
| SFO-2-10 | 37 | 82 | 18 | 10 | M4 | 2 | 0.18 |
| SFO-2-15 | 37 | 82 | 18 | 15 | M4 | 2 | 0.28 |
| SFO-3-10 | 45 | 82 | 18 | 10 | M4 | 3 | 0.19 |
| SFO-3-15 | 45 | 82 | 18 | 15 | M4 | 3 | 0.31 |
| SFO-4-10 | 45 | 82 | 18 | 10 | M4 | 4 | 0.19 |
| SFO-4-15 | 45 | 82 | 18 | 15 | M4 | 4 | 0.31 |

• 長度單位 Unit of Length (mm)



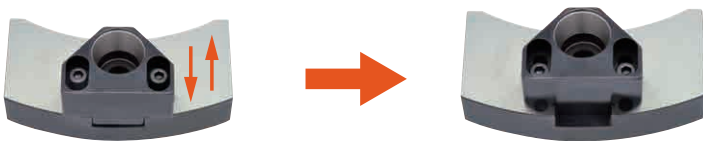
| 規格 Spec. | D | L | l_1 | H | T | 重量 (KGS) Weight |
|-------------|----|----|-------|---|----|-----------------------|
| SFB-B1-6A | 37 | 82 | 18.5 | 6 | M4 | 0.02 |

範例 Example



角度頭
ANGLE HEAD

▶ 上座可前後做調整，調合角度頭上定位梢位置，達到完美貼合
The upper angle-head fixed block can be adjusted first before bolting it together to achieve a perfect fit.





| 規格 Spec. | 內容物 Contents | | | | | 重量 (KGS) Weight |
|-------------|--------------------|--------------|--|--------------|-----------|-----------------------|
| | 定位塊 Fixed Block | 鑽頭 Drill | 螺絲 Screw | 扳手 Wrench | 數量 Qty | |
| SFB-10P-SET | SFO-1-10 | 6.8mm 9mm | SH-M4-16 (2只 -15mm 座用) SH-M4-12 (2只 -10mm 座用) | PL3 | 1 | 3.28 |
| | SFO-1-15 | | | | | |
| | SFO-2-10 | | | | | |
| | SFO-2-15 | | | | | |
| | SFO-3-10 | | | | | |
| | SFO-3-15 | | | | | |
| | SFO-4-10 | | | | | |
| | SFO-4-15 | | | | | |
| | SFO-A | | | | | |
| | SFB-B1-6A | | | | | |

 角度頭
ANGLE HEAD

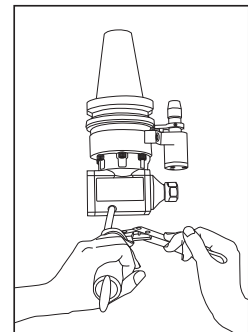
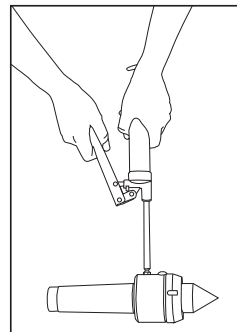
Fig.1



Fig.2



範例 Example



特點 Feature

- 攜帶方便
- 汽車、機械設備皆可適用
- 可放入條狀黃油或裝填桶裝黃油

- Easy to carry.
- Suitable for automobile and mechanical equipments.
- Grease from tubes or drums may be used.

| 規格 Spec. | 工作壓力 (psi) Power | 容量 (ml) Capacity | 尺寸 (mm) size | Fig. | 重量 (KGS) Weight |
|-------------|------------------------|------------------------|--------------------|------|-----------------------|
| LM-GG-100 | 4500 | 100 | 210x60x35 | 1 | 0.15 |
| LM-GG-500 | - | 500 | 380x130x50 | 2 | 1.28 |

• 長度單位 Unit of Length (mm)