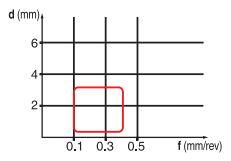
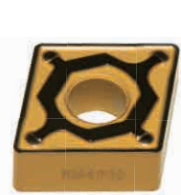


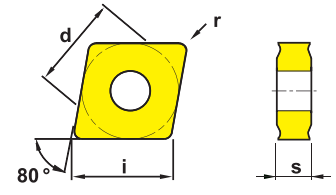
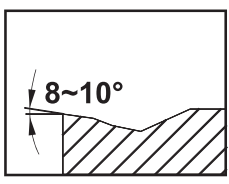


負角刀片 NEGATIVE RAKE ANGLE INSERT

KOVIT

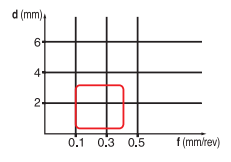
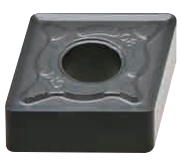


d=0.8~3.5mm
f=0.25(0.20-0.45) mm/rev

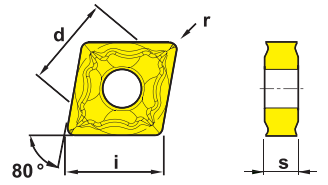
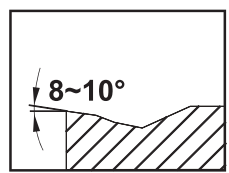


規格 Spec.	鍍層硬質合金 Layer coated carbide alloy					尺寸 (mm)			
	CVD					Size			
	RM4035					d	i	s	r
★ NEW CNMG120404N-M01	P					12.7	12.9	4.76	0.4
★ NEW CNMG120408N-M01	P					12.7	12.9	4.76	0.8

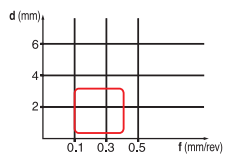
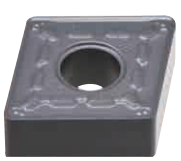
★ 推薦 Recommended NEW 新品 New Product



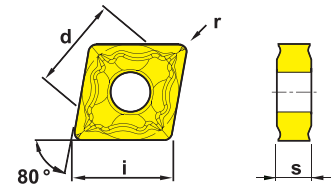
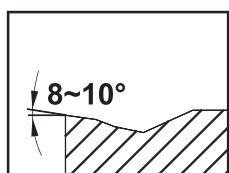
d = 0.8 ~ 3.5 mm
f = 0.1 ~ 0.4 mm/rev



規格 Spec.	鍍層硬質合金 Layer coated carbide alloy					尺寸 (mm)			
	CVD					Size			
	RM425	RM315	RM125			d	i	s	r
CNMG120404-GM2	P M	K				12.7	12.9	4.76	0.4
CNMG120408-GM2	P M	K				12.7	12.9	4.76	0.8
CNMG120408-GR2		K				12.7	12.9	4.76	0.8
CNMG120408-BM2			M			12.7	12.9	4.76	0.8
CNMG120412-BM2			M			12.7	12.9	4.76	1.2



d = 0.8 ~ 3.5 mm
f = 0.1 ~ 0.4 mm/rev



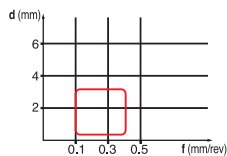
規格 Spec.	鍍層硬質合金 Layer coated carbide alloy					尺寸 (mm)			
	CVD					Size			
	RM425					d	i	s	r
CNMG120404-GS2	P M					12.7	12.9	4.76	0.4
CNMG120408-GS2	P M					12.7	12.9	4.76	0.8

•長度單位 Unit of Length (mm)

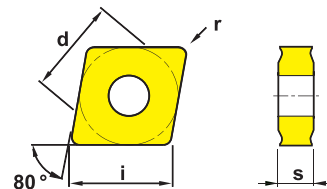
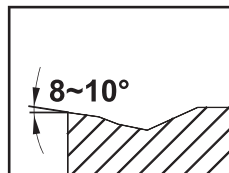


負角刀片 NEGATIVE RAKE ANGLE INSERT

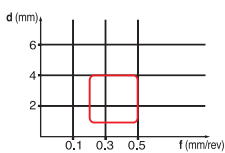
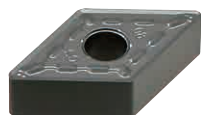
KOVIT



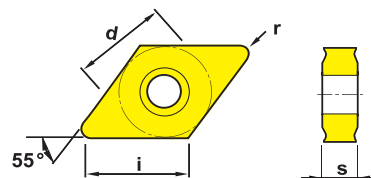
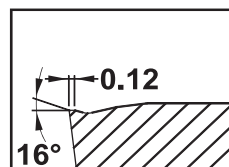
d=0.8~3.5mm
f= 0.25(0.20-0.45) mm/rev



規格 Spec.	超微粒硬質合金 Micro grain carbide alloy						尺寸 (mm)			
	HF						Size			
	RM5005						d	i	s	r
CNMG120404-NA	N						12.7	12.9	4.76	0.4
CNMG120408-NA	N						12.7	12.9	4.76	0.8



d = 1 ~ 4 mm
f = 0.2 ~ 0.5 mm/rev



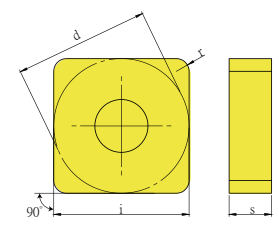
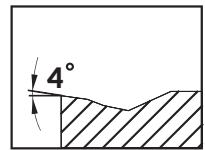
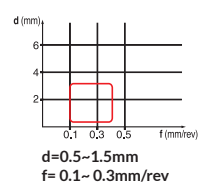
規格 Spec.	鍍層硬質合金 Layer coated carbide alloy						尺寸 (mm)			
	CVD						Size			
	RM425	RM315					d	i	s	r
DNMG150404-GM	P M	K					12.7	15.5	4.76	0.4
DNMG150408-GM	P M	K					12.7	15.5	4.76	0.8
DNMG150412-GM	P M	K					12.7	15.5	4.76	1.2
DNMG150604-GS2	P M	K					12.7	15.5	6.35	0.4
DNMG150608-GS2	P M	K					12.7	15.5	6.35	0.8

•長度單位 Unit of Length (mm)

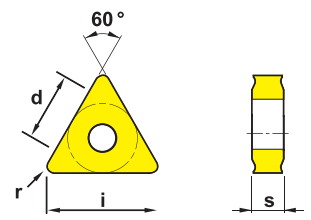
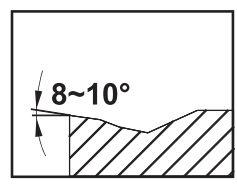
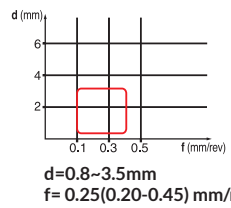
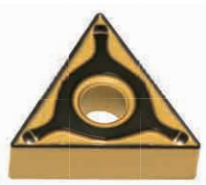


負角刀片 NEGATIVE RAKE ANGLE INSERT

KOVIT

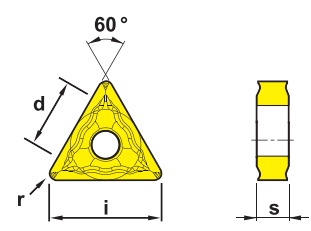
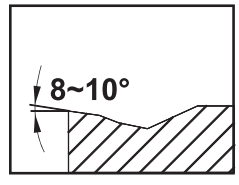
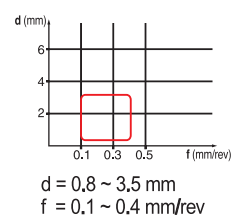
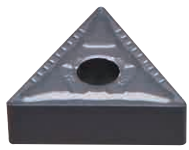


規格 Spec.	鍍層硬質合金 Layer coated carbide alloy						尺寸 (mm)			
	CVD						Size			
	RM125						d	i	s	r
NEW SNMG120412-BM2	M						12.7	12.7	4.76	1.2



規格 Spec.	鍍層硬質合金 Layer coated carbide alloy						尺寸 (mm)			
	CVD						Size			
	RM4035						d	i	s	r
★ NEW TNMG160404N-M01	P						9.525	16.5	4.76	0.4
★ NEW TNMG160408N-M01	P						9.525	16.5	4.76	0.8

★ 推薦 Recommended NEW 新品 New Product



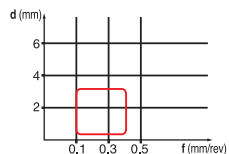
規格 Spec.	鍍層硬質合金 Carbide alloy						尺寸 (mm)			
	CVD						Size			
	RM425	RM315					d	i	s	r
TNMG160404-GM2	P M	K					9.525	16.5	4.76	0.4
TNMG160408-GM2	P M	K					9.525	16.5	4.76	0.8

•長度單位 Unit of Length (mm)

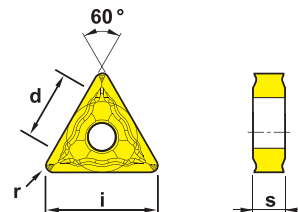
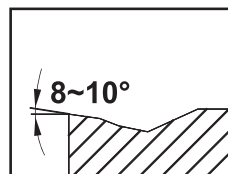


負角刀片 NEGATIVE RAKE ANGLE INSERT

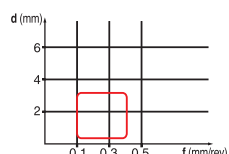
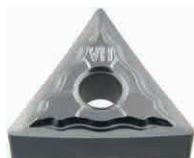
KOVIT



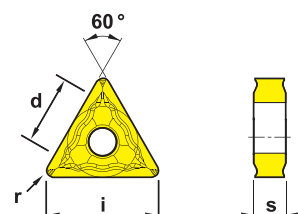
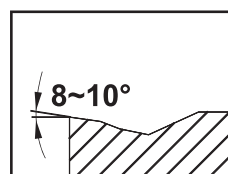
d = 0.8 ~ 3.5 mm
f = 0.1 ~ 0.4 mm/rev



規格 Spec.	鍍層硬質合金 Layer coated carbide alloy						尺寸 (mm)			
	CVD						Size			
	RM425	RM125					d	i	s	r
TNMG160404-GS2	P M						9.525	16.5	4.76	0.4
TNMG160408-GS2	P M						9.525	16.5	4.76	0.8
TNMG160408-MA1		M					9.525	16.5	4.76	0.8
TNMG160412-MA1		M					9.525	16.5	4.76	1.2



d = 0.8 ~ 3.5 mm
f = 0.1 ~ 0.4 mm/rev




規格 Spec.	超微粒硬質合金 Micro grain carbide alloy						尺寸 (mm)			
	HF						Size			
	RM5005						d	i	s	r
TNMG160404-NA	N						9.525	16.5	4.76	0.4
TNMG160408-NA	N						9.525	16.5	4.76	0.8


•長度單位 Unit of Length (mm)

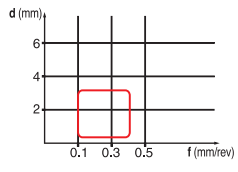


負角刀片 NEGATIVE RAKE ANGLE INSERT

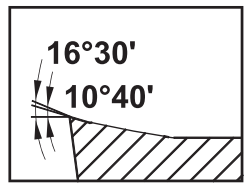
KOVIT

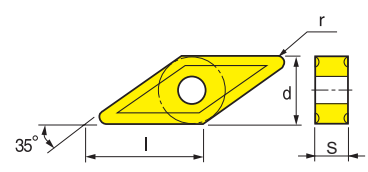








d = 0.8 ~ 3.5 mm
f = 0.1 ~ 0.4 mm/rev

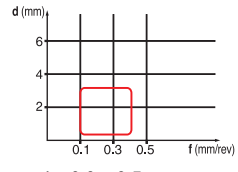




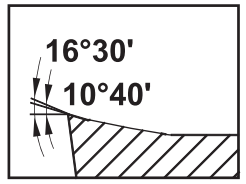
規格 Spec.	鍍層硬質合金 Layer coated carbide alloy					尺寸 (mm)			
	CVD					Size			
	RM425					d	i	s	r
VNMG160404-GM2						16.6	9.525	4.76	0.4
VNMG160408-GM2						16.6	9.525	4.76	0.8

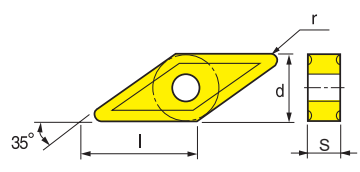








d = 0.8 ~ 3.5 mm
f = 0.1 ~ 0.4 mm/rev

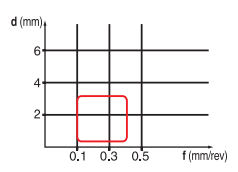




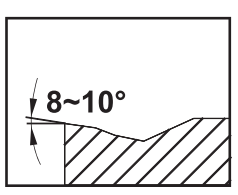
規格 Spec.	超微粒硬質合金 Micro grain cemented carbide					尺寸 (mm)			
	HF					Size			
	RM5005					d	i	s	r
VNMG160408-NA						9.525	16.6	4.76	0.8

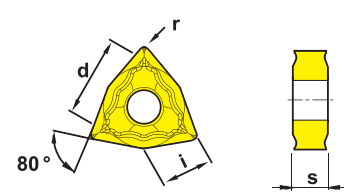






d=0.8~3.5mm
f=0.25(0.20-0.45) mm/rev





規格 Spec.	鍍層硬質合金 Layer coated carbide alloy					尺寸 (mm)			
	CVD					Size			
	RM4035					d	i	s	r
★ NEW WNMG080404N-M01						12.7	8.7	4.76	0.4
★ NEW WNMG080408N-M01						12.7	8.7	4.76	0.8

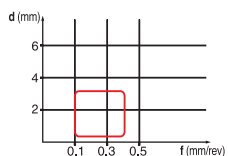
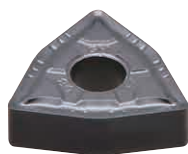
★ 推薦 Recommended NEW 新品 New Product

• 長度單位 Unit of Length (mm)

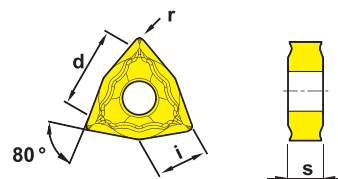
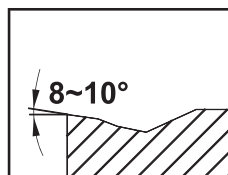


負角刀片 NEGATIVE RAKE ANGLE INSERT

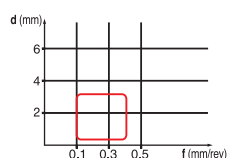
KOVIT



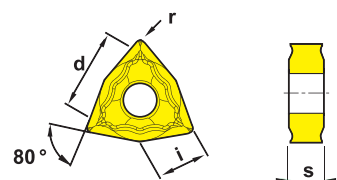
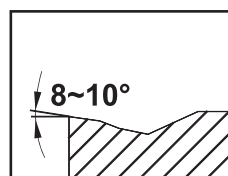
d = 0.8 ~ 3.5 mm
f = 0.1 ~ 0.4 mm/rev



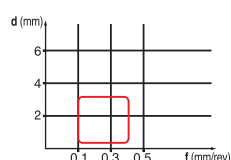
規格 Spec.	鍍層硬質合金 Layer coated carbide alloy					尺寸 (mm) Size			
	CVD					Size			
	RM425	RM315				d	i	s	r
WNMG080404-GM2						12.7	8.7	4.76	0.4
WNMG080408-GM2						12.7	8.7	4.76	0.8



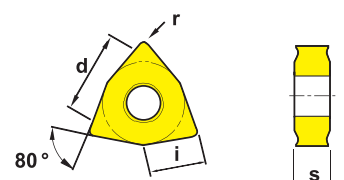
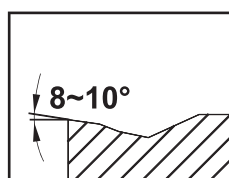
d = 0.8 ~ 3.5 mm
f = 0.1 ~ 0.4 mm/rev



規格 Spec.	鍍層硬質合金 Layer coated carbide alloy					尺寸 (mm) Size			
	CVD					Size			
	RM425					d	i	s	r
WNMG080404-GS2						12.7	8.7	4.76	0.4
WNMG080408-GS2						12.7	8.7	4.76	0.8



d = 0.8 ~ 3.5 mm
f = 0.1 ~ 0.4 mm/rev



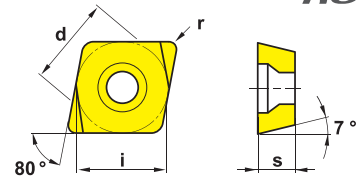
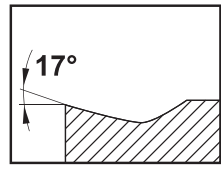
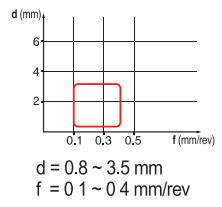
規格 Spec.	超微粒硬質合金 Micro grain carbide alloy					尺寸 (mm) Size			
	HF					Size			
	RM5005					d	i	s	r
WNMG080408-NA						12.7	8.7	4.76	0.8

•長度單位 Unit of Length (mm)

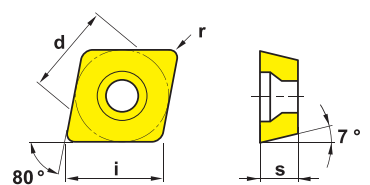
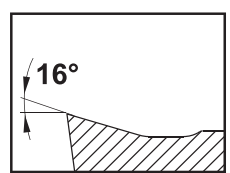
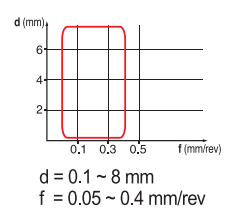


正角刀片 POSITIVE RAKE ANGLE INSERT

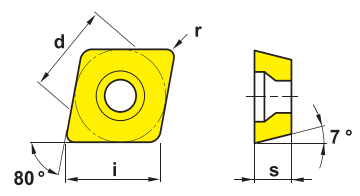
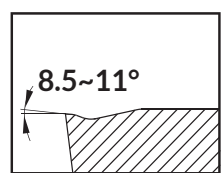
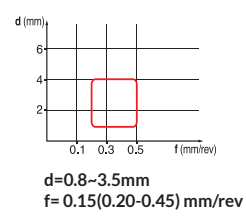
KOVIT



規格 Spec.	鍍層超微粒 Layer coated micro grain							尺寸 (mm)			
	CHF							Size			
	RM4015							d	i	s	r
CCGT03S102L-F	P							3.57	-	1.39	0.2
CCGT03S104L-F	P							3.57	-	1.39	0.4
CCGT04T002L-F	P							4.37	-	1.79	0.2
CCGT04T004L-F	P							4.37	-	1.79	0.4



規格 Spec.	超微粒硬質合金 Micro grain carbide alloy							尺寸 (mm)			
	HF							Size			
	RM5005							d	i	s	r
CCGT060202-NK	N							6.35	6.5	2.38	0.2
CCGT060204-NK	N							6.35	6.5	2.38	0.4
CCGT060208-NK	N							6.35	6.5	2.38	0.8
CCGT09T304-NK	N							9.525	9.7	3.97	0.4
CCGT09T308-NK	N							9.525	9.7	3.97	0.8
CCGT120404-NK	N							12.7	12.9	4.76	0.4
CCGT120408-NK	N							12.7	12.9	4.76	0.8

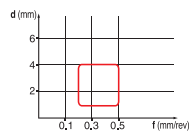


規格 Spec.	瓷金鍍層 Cermet							尺寸 (mm)			
	HT							Size			
	RM1205							d	i	s	r
CCMT060204N-M01	P H							6.35	6.4	2.38	0.4
CCMT09T304N-M01	P H							9.525	9.7	3.97	0.4
CCMT09T308N-M01	P H							9.525	9.7	3.97	0.8

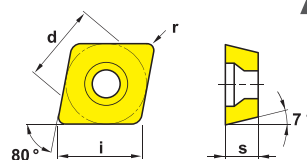
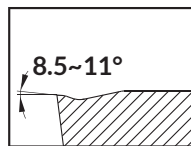
•長度單位 Unit of Length (mm)



正角刀片 POSITIVE RAKE ANGLE INSERT



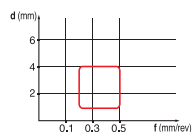
d=0.8~3.5mm
f=0.15(0.20-0.45) mm/rev



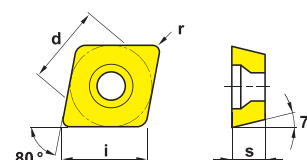
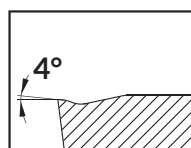
KOVIT

規格 Spec.	鍍層硬質合金 Layer coated carbide alloy				尺寸 (mm) Size			
	CVD				Size			
	RM4035				d	i	s	r
★ NEW CCMT060202N-F01	P				6.35	6.4	2.38	0.2
★ NEW CCMT060204N-F01	P				6.35	6.4	2.38	0.4
★ NEW CCMT09T304N-F01	P				9.525	9.7	3.97	0.4
★ NEW CCMT09T308N-F01	P				9.525	9.7	3.97	0.8
★ NEW CCMT120404N-F01	P				12.7	12.9	4.76	0.4
★ NEW CCMT120408N-F01	P				12.7	12.9	4.76	0.8

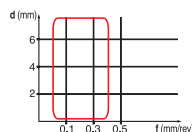
★ 推薦 Recommended NEW 新品 New Product



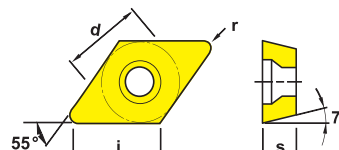
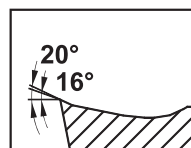
d=0.8~3.5mm
f=0.25(0.20-0.45) mm/rev



規格 Spec.	鍍層硬質合金 Layer coated carbide alloy				尺寸 (mm) Size			
	CVD				Size			
	RM425	RM315	RM125		d	i	s	r
CCMT060204-HM	P (M)	K			6.35	6.4	2.38	0.4
CCMT060208-HM	P (M)	K	(M)		6.35	6.4	2.38	0.8
CCMT09T304-HM	P (M)	K			9.525	9.7	3.97	0.4
CCMT09T308-HM	P (M)	K	(M)		9.525	9.7	3.97	0.8
CCMT120404-HM	P (M)	K			12.7	12.9	4.76	0.4
CCMT120408-HM	P (M)	K			12.7	12.9	4.76	0.8



d = 0.1 ~ 8 mm
f = 0.05 ~ 0.4 mm/rev



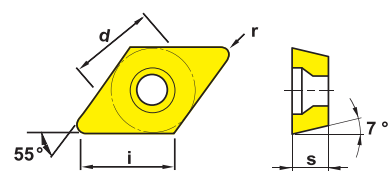
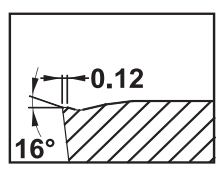
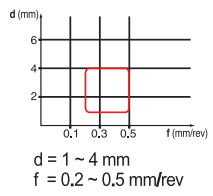
規格 Spec.	超微粒硬質合金 Micro grain carbide alloy				尺寸 (mm) Size			
	HF				Size			
	RM5005				d	i	s	r
DCGT070204-NK	N				6.35	7.8	2.38	0.4
DCGT070208-NK	N				6.35	7.8	2.38	0.8
DCGT11T302-NK	N				9.525	11.6	3.97	0.2
DCGT11T304-NK	N				9.525	11.6	3.97	0.4
DCGT11T308-NK	N				9.525	11.6	3.97	0.8

• 長度單位 Unit of Length (mm)

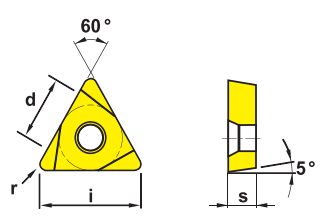
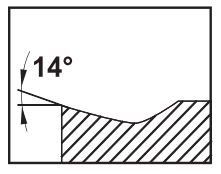
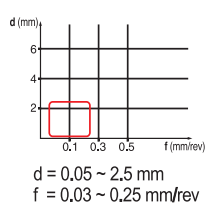


正角刀片 POSITIVE RAKE ANGLE INSERT

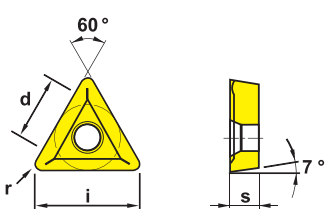
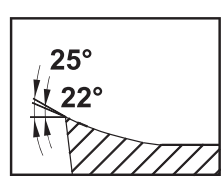
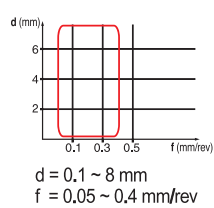
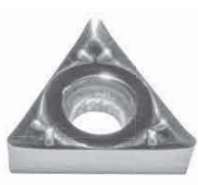
KOVIT



規格 Spec.	鍍層硬質合金 Layer coated carbide alloy							尺寸 (mm)			
	CVD							Size			
	RM425							d	i	s	r
DCMT070204-HM	P	M						6.35	7.8	2.38	0.4
DCMT070208-HM	P	M						6.35	7.8	2.38	0.8
DCMT11T304-HM	P	M						12.7	12.9	4.76	0.4
DCMT11T308-HM	P	M						12.7	12.9	4.76	0.8



規格 Spec.	鍍層超微粒 Layer coated micro grain		瓷金鍍層 Cermet		超微粒硬質合金 Micro grain carbide alloy				尺寸 (mm)								
	CHF		HT		HF				Size								
	RM4030				RM1205					d	i	s	r				
TBGT060102L-F01	P	M			P	M			N					3.97	6.4	1.59	0.2
TBGT060104L-F01	P	M			P	M			N					3.97	6.4	1.59	0.4



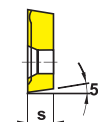
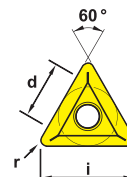
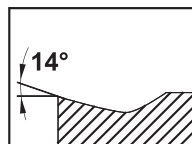
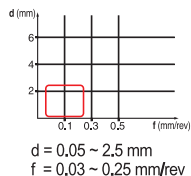
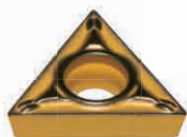
規格 Spec.	超微粒硬質合金 Micro grain carbide alloy							尺寸 (mm)			
	HF							Size			
	RM5005							d	i	s	r
TCGT090204-NK	N							5.56	9.6	3.38	0.4
TCGT110204-NK	N							6.35	11	2.38	0.4
TCGT16T304-NK	N							9.525	16.5	3.97	0.4
TCGT16T308-NK	N							9.525	16.5	3.97	0.8

•長度單位 Unit of Length (mm)



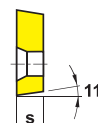
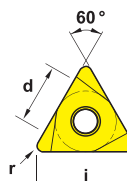
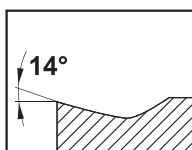
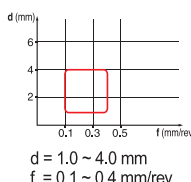
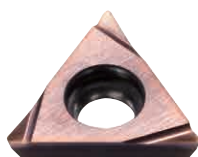
正角刀片 POSITIVE RAKE ANGLE INSERT

KOVIT

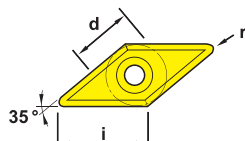
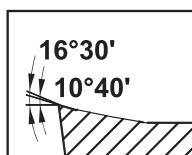
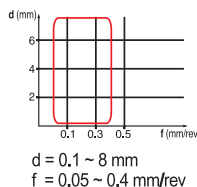


規格 Spec.	鍍層硬質合金 Layer coated carbide alloy							尺寸 (mm)			
	CVD							Size			
	RM4035							d	i	s	r
★ NEW TCMT110202N-F01	P							6.35	11	2.38	0.2
★ NEW TCMT110204N-F01	P							6.35	11	2.38	0.4
★ NEW TCMT16T304N-F01	P							9.525	16.5	3.97	0.4
★ NEW TCMT16T308N-F01	P							9.525	16.5	3.97	0.8

★ 推薦 Recommended NEW 新品 New Product



規格 Spec.	鍍層超微粒 Layer coated micro grain		瓷金鍍層 Cermet		超微粒硬質合金 Micro grain carbide alloy			尺寸 (mm)					
	CHF		HT		HF			Size					
	RM4030			RM1205		RM5005				d	i	s	r
TPGT080202L-F01	P			P M		N				4.76	8.2	2.38	0.2
TPGT080204L-F01	P			P M		N				4.76	8.2	2.38	0.4
TPGT090202L-F01	P			P M		N				5.56	9.6	2.38	0.2
TPGT090204L-F01	P			P M		N				5.56	9.6	2.38	0.4
TPGT110302L-F01	P			P M		N				6.35	11	2.38	0.2
TPGT110304L-F01	P			P M		N				6.35	11	2.38	0.4



規格 Spec.	超微粒硬質合金 Micro grain carbide alloy							尺寸 (mm)			
	HF							Size			
	RM5005							d	i	s	r
VCGT160402-NK	N							9.525	16.5	4.76	0.2
VCGT160404-NK	N							9.525	16.5	4.76	0.4
VCGT160408-NK	N							9.525	16.5	4.76	0.8

• 長度單位 Unit of Length (mm)



車牙刀片
THREADING INSERTS

外螺紋 External Thread

KOVIT

形狀 shape	規格 Spec..	鍍層超微粒 Layer coated micro grain					尺寸 (mm) Size				圖形 Drawing
		CHF					Size				
		RM1325					ic	i	x	y	
	16ERA60	P M					9.525	16	0.8	0.9	
	16ERAG60	P M					9.525	16	1.1	1.5	
	16ERG60	P M					9.525	16	1.2	1.7	
	22ERN60	P M					9.525	16	1.7	2.5	
	16ERA55	P M					9.525	16	0.8	0.9	
	16ERAG55	P M					9.525	16	1.1	1.5	
	16ERG55	P M					9.525	16	1.2	1.7	
	22ERN55	P M					12.7	22	1.7	2.5	
	16ER1.0ISO	P M					9.525	16	0.8	0.7	
	16ER1.25ISO	P M					9.525	16	0.8	0.9	
	16ER1.5ISO	P M					9.525	16	0.8	1.0	
	16ER1.75ISO	P M					9.525	16	1.2	1.2	
	16ER2.0ISO	P M					9.525	16	1.2	1.3	
	16ER2.5ISO	P M					9.525	16	1.2	1.5	
	16ER3.0ISO	P M					9.525	16	1.2	1.5	
	22ER3.5ISO	P M					12.7	22	1.6	2.3	
	22ER4.0ISO	P M					12.7	22	1.6	2.3	
	22ER4.5ISO	P M					12.7	22	1.7	2.4	
	22ER5.0ISO	P M					12.7	22	1.7	2.5	
	16ER24UN	P M					9.525	16	0.8	0.8	
	16ER20UN	P M					9.525	16	0.8	0.9	
	16ER18UN	P M					9.525	16	0.8	1.0	
	16ER16UN	P M					9.525	16	0.9	1.1	
	16ER14UN	P M					9.525	16	1.2	1.5	
	16ER12UN	P M					9.525	16	1.2	1.5	
	16ER10UN	P M					9.525	16	1.2	1.5	
	16ER8UN	P M					9.525	16	1.3	1.7	

•長度單位 Unit of Length (mm)



車牙刀片
THREADING INSERTS

KOVIT

內螺紋 Internal Thread

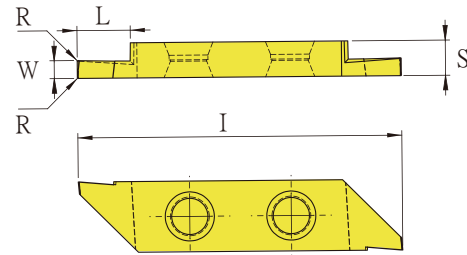
形狀 Shape	規格 Spec.	鍍層超微粒 Layer coated micro grain						尺寸 (mm) Size				圖形 Drawing
		CHF						Size				
		RM325						ic	i	x	y	
	11IRA60	P M						6.35	11	0.8	0.9	
	16IRA60	P M						9.525	16	0.8	0.9	
	16IRAG60	P M						9.525	16	1.1	1.5	
	16IRG60	P M						9.525	16	1.2	1.7	
	22IRN60	P M						12.7	22	1.7	2.5	
	11IRA55	P M						6.35	11	0.8	0.9	
	16IRA55	P M						9.525	16	0.8	0.9	
	16IRAG55	P M						9.525	16	1.1	1.5	
	16IRG55	P M						9.525	16	1.2	1.7	
	22IRN55	P M						12.7	22	1.7	2.5	
	11IR1.0ISO	P M						6.35	11	0.8	0.7	
	11IR1.25ISO	P M						6.35	11	0.8	0.9	
	11IR1.5ISO	P M						6.35	11	0.8	1.0	
	11IR1.75ISO	P M						6.35	11	0.9	1.1	
	11IR2.0ISO	P M						6.35	11	0.9	1.1	
	16IR1.0ISO	P M						9.525	16	0.8	0.7	
	16IR1.25ISO	P M						9.525	16	0.8	0.9	
	16IR1.5ISO	P M						9.525	16	0.8	1.0	
	16IR1.75ISO	P M						9.525	16	1.2	1.2	
	16IR2.0ISO	P M						9.525	16	1.2	1.3	
	16IR2.5ISO	P M						9.525	16	1.2	1.5	
	16IR3.0ISO	P M						9.525	16	1.2	1.5	
	22IR3.5ISO	P M						12.7	22	1.6	2.3	
	22IR4.0ISO	P M						12.7	22	1.6	2.3	
	22IR4.5ISO	P M						12.7	22	1.6	2.4	
22IR5.0ISO	P M						12.7	22	1.6	2.3		
	11R20UN	P M						6.35	11	0.8	0.9	
	11R18UN	P M						6.35	11	0.8	1.0	
	16R24UN	P M						9.525	16	0.8	0.8	
	16R20UN	P M						9.525	16	0.8	0.9	
	16R18UN	P M						9.525	16	0.8	1.0	
	16R16UN	P M						9.525	16	0.9	1.1	
	16R14UN	P M						9.525	16	1.2	1.5	
	16R12UN	P M						9.525	16	1.2	1.5	
	16R10UN	P M						9.525	16	1.2	1.5	
	16R8UN	P M						9.525	16	1.3	1.7	

•長度單位 Unit of Length (mm)

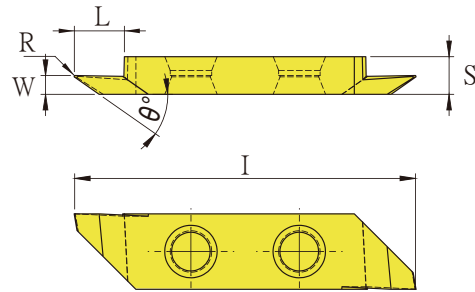


走心式車刀片 THREADING INSERTS FOR SWISS-TYPE LATHES

KOVIT



規格 Spec.	鍍層超微粒 Layer coated micro grain		超微粒硬質合金 Micro grain carbide alloy			尺寸 (mm)					
	CHF		HF			Size					
	OM4025	OM5035	OM5005			W	R	加工 深度 Depth	L	I	S
NEW SCCIL375-41002	P K	M	N			1	0.2	6	11	37.5	4.0
NEW SCCIR375-41002	P K	M	N			1	0.2	6	11	37.5	4.0
NEW SCCIL375-41502	P K	M	N			1.5	0.2	8	11	37.5	4.0
NEW SCCIR375-41502	P K	M	N			1.5	0.2	8	11	37.5	4.0
NEW SCCIL375-42002	P K	M	N			2	0.2	10	11	37.5	4.0
NEW SCCIR375-42002	P K	M	N			2	0.2	10	11	37.5	4.0
NEW SCCIL375-42502	P K	M	N			2.5	0.2	10	11	37.5	4.0
NEW SCCIR375-42502	P K	M	N			2.5	0.2	10	11	37.5	4.0
NEW SCCIL375-43002	P K	M	N			3	0.2	10	11	37.5	4.0
NEW SCCIR375-43002	P K	M	N			3	0.2	10	11	37.5	4.0



規格 Spec.	鍍層超微粒 Layer coated micro grain		超微粒硬質合金 Micro grain carbide alloy			尺寸 (mm)							
	CHF		HF			Size							
	OM4025	OM5035	OM5005			W	HF	R	加工 深度 Depth	L	θ	I	S
NEW SCCIL375-BL40502-60	P K	M	N			0.5	0.5	0.2	0.1-4.2	11	60°	37.5	4.0
NEW SCCIR375-BL40502-60	P K	M	N			0.5	0.5	0.2	0.1-4.2	11	60°	37.5	4.0
NEW SCCIL375-BL41002-60	P K	M	N			1	0.5	0.2	0.1-4.2	11	60°	37.5	4.0
NEW SCCIR375-BL41002-60	P K	M	N			1	0.5	0.2	0.1-4.2	11	60°	37.5	4.0
NEW SCCIR375-BL41002-70	P K	M	N			1	0.2	0.2	0.1-4.2	11	70°	37.5	4.0
NEW SCCIL375-BL41002-70	P K	M	N			1	0.2	0.2	0.1-4.2	11	70°	37.5	4.0

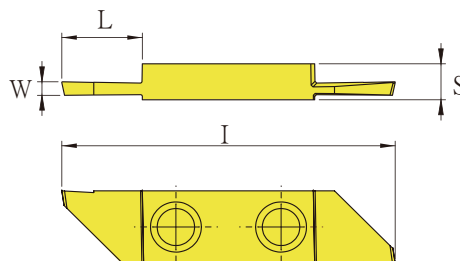
NEW 新品 New Product

•長度單位 Unit of Length (mm)

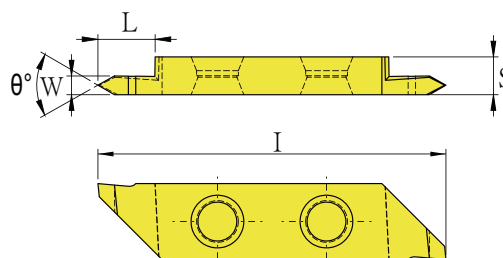


走心式車刀片 THREADING INSERTS FOR SWISS-TYPE LATHES

KOVIT



規格 Spec.	鍍層超微粒 Layer coated micro grain		超微粒硬質合金 Micro grain carbide alloy			尺寸 (mm)					
	CHF		HF			Size					
	OM4025	OM5035	OM5005			W	R	加工 深度 Depth	L	I	S
NEW SCCIL375-AD43002	P K	M	N			3	0.2	11	11	37.5	4.0



規格 Spec.	鍍層超微粒 Layer coated micro grain		超微粒硬質合金 Micro grain carbide alloy			尺寸 (mm)					
	CHF		HF			Size					
	OM4025	OM5035	OM5005			W	R	PITCH	θ	I	S
NEW SCCIL375-T42001-A60	P K	M	N			4	0.1	0.4-1.5	60°	37.5	4.0
NEW SCCIR375-T42001-A60	P K	M	N			4	0.1	0.4-1.5	60°	37.5	4.0
NEW SCCIR375-T43002-B60	P K	M	N			6	0.2	1.5-2.5	60°	37.5	4.0
NEW SCCIR375-T43002-B60	P K	M	N			6	0.2	1.5-2.5	60°	37.5	4.0

NEW 新品 New Product

•長度單位 Unit of Length (mm)



銑削刀片 MILLING INSERTS

KOVIT

ISO 分類	P	合金鋼 Alloyed Steels	○	○		○	○									切削狀態 Cutting Condition : ● 連續切削 Continuous Cutting ○ 一般切削 General Cutting ■ 斷續切削 Interrupted Cutting
	M	不鏽鋼 Stainless Steels	○				○									
	K	鑄鐵 Cast Iron	○		○											
	N	鋁及鋁合金 Aluminum&Al							■	■	○	○	○			
S	高溫合金 Refractory Alloys							○								
H	高硬度材 Hard Material					○										
形狀 Shape	規格 Spec.	鍍層超微粒 Layer coated micro grain					超微粒硬質合金 Micro grain carbide alloy					尺寸 (mm) Size				圖形 Drawing
		CHF					HF					d	i	s	r	
		OM4025	OM4025N	RM3130	RM4110	RM4130	RM535	GH05	OM5005	OM5060	RM5005	RM5060				
	NEW AECX32T302ER-F01							●	●			11.9	37	3.97	0.2	
	NEW AECX32T320ER-F01							●	●			11.9	37	3.97	2	
	NEW AECX32T330ER-F01							●	●			11.9	37	3.97	3	
	NEW AECX32T340ER-F01							●	●			11.9	37	3.97	4	
	NEW AECX32T350ER-F01							●	●			11.9	37	3.97	5	
	★ APEX100304PDFR-F01							●	●			6.68	10.5	3.47	0.4	
	★ APEX1604PDFR-F01							●	●			9.525	16.4	4.76	-	
	★ APEX160400PDFR-F01							●	●			9.525	16.4	4.76	-	
	★ APEX160404PDFR-F01							●	●			9.525	16.4	4.76	0.4	
	★ APEX160408PDFR-F01							●	●			9.525	16.4	4.76	-	
	APEX1604PDFR-701						●					9.525	16.4	4.76	0.2	
	APGT100304PDFR-F04								●			6.68	10.5	3.47	0.4	
	APGT1604PDFR-G2								●			9.525	16.5	4.76	-	
	APGT160408PDFR-F02								●			9.525	16.4	4.76	0.8	
	APHT1003PDFR-F03								●			6.68	10.4	3.47	0.8	
	APKT060204-M02					●						3.7	6.45	2.38	0.4	
	APKT060204-MT								●	●		3.7	6.45	2.38	0.4	
	APKT100304PDER-M04					●						6.68	10.5	3.47	0.4	
	APKT100308PDER-M04					●						6.68	10.5	3.47	0.8	
	APKT1003PDER-M05						●					6.68	10.5	3.5	-	
	APKT1604PDER-M05						●					9.525	16.4	4.76	0.8	
	★ APKT160408-M01	●	●									9.525	16.6	4.76	0.8	
	APKT160408PDER-M02			●		●						9.525	16.4	4.76	0.8	
	APMT113508PDER-M04				●	●						6.35	11	3.5	0.8	
	APMT1135PDER-M04					●						6.35	11	3.5	0.4	
	APMT1604PDER-M04				●	●						9.525	16.5	4.76	0.8	

- MT 鋁合金專用 MT: Applicable to Aluminum ★ 推薦 Recommended NEW 新品 New Product

● 長度單位 Unit of Length (mm)



銑削刀片 MILLING INSERTS

KOVIT

ISO 分類	P	合金鋼 Alloyed Steels	○	○		○													切削狀態 Cutting Condition : ● 連續切削 Continuous Cutting ○ 一般切削 General Cutting ■ 斷續切削 Interrupted Cutting
	M	不鏽鋼 Stainless Steels	○	○	○	○	○	○											
	K	鑄鐵 Cast Iron	○				○												
	N	鋁及鋁合金 Aluminum&Al								○									
S	高溫合金 Refractory Alloys							○											
H	高硬度材 Hard Material	○																	
形狀 Shape	規格 Spec.	鍍層超微粒 Layer coated micro grain						超微粒硬質合金 Micro grain carbide alloy						尺寸 (mm) Size				圖形 Drawing	
		CHF						HF						d	i	s	r		
		OM4010	OM4025	OM5035	RM4025	RM5035	RM4125	OM5005											
	APMT1503-R01	●	●												15	9.52	3.18	0.8	
	BR08S	●	●					●							8	3	2	-	
	BR10S	●	●					●							10	4	2.5	-	
	BR12S	●	●					●							12	5	2.5	-	
	BR16S	●	●					●							16	5	3	-	
	BR20S	●	●					●							20	5	3	-	
	BR25S	●	●					●							25	6	4	-	
	BR30S	●	●					●							30	8	5	-	
	BR32S	●	●					●							32	8	5	-	
	CNEX120612-M01	●	●												12.7	-	6.35	1.2	
	CNEX150812-M01	●	●												15	-	8	1.2	
	DGN2202-J1				●										19.8	2.2	-	0.2	
	DGN3102-J1				●										20.1	3.1	-	0.2	
	NEW HNGX0604ANEN-M01		●	●				●							10.5	-	5.2	-	
	NEW HPKT0604AZER-M05					●	●								16.3		4.5	-	

NEW 新品 New Product

•長度單位 Unit of Length (mm)



銑削刀片 MILLING INSERTS

KOVIT

ISO 分類	P	合金鋼 Alloyed Steels	○	○	○											切削狀態 Cutting Condition : ● 連續切削 Continuous Cutting ○ 一般切削 General Cutting ■ 斷續切削 Interrupted Cutting
	M	不鏽鋼 Stainless Steels	○	○												
	K	鑄鐵 Cast Iron	○													
	N	鋁及鋁合金 Aluminum&Al														
S	高溫合金 Refractory Alloys															
H	高硬度材 Hard Material	○														
形狀 Shape	規格 Spec.	鍍層超微粒 Layer coated micro grain				超微粒硬質合金 Micro grain carbide alloy				尺寸 (mm) Size				圖形 Drawing		
		CHF				HF										
		RM1125	OM4010	OM4025		OM5005				d	i	s	r			
	LC1210		●							12.0	14.0	2.50	1.0			
	LC1220		●							12.0	14.0	2.50	2.0			
	LC1230		●							12.0	14.0	2.50	3.0			
	LC1210-F		●							12.0	14.0	2.50	1.0			
	LC1220-F		●							12.0	14.0	2.50	2.0			
	LC1230-F		●							12.0	14.0	2.50	3.0			
	LC1210-RE		●							12.0	14.0	2.50	1.0			
	LC1220-RE		●							12.0	14.0	2.50	2.0			
	LC1230-RE		●							12.0	14.0	2.50	3.0			
	LC1245-CH		●	●						12.0	14.0	2.50	-			
	LC1260-CH		●	●						12.0	14.0	2.50	-			
	NEW LNMU0303ZER-MJ	●								6	11.9	4.3	1.2			
	LPMT1504-R01			●						12.7	15.88	4.76	-			
	ODMT040408			●						12.7	4.6	4.76	0.8			

NEW 新品 New Product

•長度單位 Unit of Length (mm)



銑削刀片 MILLING INSERTS

KOVIT

ISO 分類	P	合金鋼 Alloyed Steels	○	○	○	○	○	○								
	M	不鏽鋼 Stainless Steels		○	○	○	○	○								
	K	鑄鐵 Cast Iron				○	○									
	N	鋁及鋁合金 Aluminum&Al							■	■	■					
S	高溫合金 Refractory Alloys															
H	高硬度材 Hard Material	○			○											

形狀 Shape	規格 Spec.	鍍層硬質合金 Carbide alloy			鍍層超微粒 Layer coated micro grain			超微粒硬質合金 Micro grain carbide alloy			尺寸 (mm) Size				圖形 Drawing
		HC			CHF			HF			d	i	s	r	
		OM0125	OM1115	OM2115	OM4010	OM4025	RM4130	OM5005	OM5060	RM5005					
	RDET1003MOF-F01							●			10	-	3.18	5	
	RDET1604MOF-F01							●	●		16	-	4.76	8	
	RDGT1003MO-F01									●	10	-	3.18	5	
	RDGT1604MO-F01									●	16	-	4.76	8	
	RDKW0501MO	●		●							5	-	1.51	2.5	
	RDKW0702MO	●	●	●							7	-	2.38	3.5	
	RDKW1003MO		●	●							10	-	3.18	5	
	RDMT0802MOTN						●				8	-	2.38	4	
	RDMT10T3MOTN						●				10	-	3.97	5	
	RDMT1204MOTN						●				12	-	4.76	6	
	RDMT1604MOTN						●				16	-	4.76	8	
	RPET1204MOE-M01				●	●		●			12	-	4.76	6	
	RPMT10T3MON						●				10	-	3.97	5	
	RPMT1204MON						●				12	-	4.76	6	
	RPMT1204MO-M01			●							12	-	4.76	6	
	RPMW1003MON						●				10	-	3.18	5	

切削狀態 Cutting Condition :

- 連續切削 Continuous Cutting
- 一般切削 General Cutting
- 斷續切削 Interrupted Cutting

•長度單位 Unit of Length (mm)



銑削刀片 MILLING INSERTS

KOVIT

ISO 分類	P	合金鋼 Alloyed Steels	○	○	○	○	○													切削狀態 Cutting Condition :				
	M	不鏽鋼 Stainless Steels	○	○	○	○	○	○													● 連續切削 Continuous Cutting ○ 一般切削 General Cutting ■ 斷續切削 Interrupted Cutting			
	K	鑄鐵 Cast Iron	○	○	○	○																		
N	鋁及鋁合金 Aluminum&Al								■	■														
S	高溫合金 Refractory Alloys																							
H	高硬度材 Hard Material	○																						
形狀 Shape	規格 Spec.	鍍層超微粒 Layer coated micro grain					超微粒硬質合金 Micro grain carbide alloy					尺寸 (mm) Size				圖形 Drawing								
		CHF					HF					Size												
		OM4010	OM4025	OM4125	RM4025	RM3125	OM5005	OM5060					d	i	s		r							
	NEW SBT050202-F01		●	●							●									4.85	-	2	0.2	
	SDMT090308-R01	●	●																	9.52	-	3.18	0.8	
	SDET090408EDER-M01	●	●																	9.52	9.52	4.76	0.8	
NEW	SDMT090408EDER-M04				●															9.52	9.52	4.76	0.8	
	SDET120508ER-M01	●	●																	12.7	12.7	5.56	0.8	
NEW	SDMT120512EDER-M04				●															12.7	12.7	5.56	0.8	
	NEW SDZ13003		●																	13	-	3.18	-	
	NEW SDZ14003		●																	14	-	3.18	-	
	NEW SDZ15003		●																	15	-	3.18	-	
	NEW SDZ16003		●																	16	-	3.18	-	
	NEW SDZ17003		●																	17	-	3.18	-	
	NEW SDZ180T3		●																	18	-	3.97	-	
	NEW SDZ190T3		●																	19	-	3.97	-	
	NEW SDZ200T3		●																	20	-	3.97	-	
	NEW SDZ210T3		●																	21	-	3.97	-	
	NEW SDZ220T3		●																	22	-	3.97	-	
	NEW SDZ230T3		●																	23	-	3.97	-	
	NEW SDZ240T3		●																	24	-	3.97	-	
	NEW SDZ25004		●																	25	-	4.76	-	
	NEW SDZ26004		●																	26	-	4.76	-	
	NEW SDZ27004		●																	27	-	4.76	-	
	NEW SDZ28004		●																	28	-	4.76	-	
	NEW SDZ29004		●																	29	-	4.76	-	
	NEW SDZ30004		●																	30	-	4.76	-	
	NEW SDZ31004		●																	31	-	4.76	-	
	NEW SDZ32004		●																	32	-	4.76	-	
	NEW SDZ33004		●																	33	-	4.76	-	
	NEW SDZ34004		●																	34	-	4.76	-	

NEW 新品 New Product

•長度單位 Unit of Length (mm)



銑削刀片 MILLING INSERTS

KOVIT

ISO 分類	P	合金鋼 Alloyed Steels	○	○	○	○	●		○	○									切割狀態 Cutting Condition:				圖形 Drawing
	M	不鏽鋼 Stainless Steels	○	○	○	○													● 連續切削 Continuous Cutting	○ 一般切削 General Cutting	■ 斷續切削 Interrupted Cutting		
	K	鑄鐵 Cast Iron	○	○		○																	
N	鋁及鋁合金 Aluminum&Al											■	■	■	■								
S	高溫合金 Refractory Alloys																						
H	高硬度材 Hard Material	○																					
形狀 Shape	規格 Spec.	鍍層超微粒 Layer coated micro grain					瓷金鍍層 Cermet		硬質合金 Carbide alloy			超微粒硬質合金 Micro grain carbide alloy				尺寸 (mm) Size				圖形 Drawing			
		CHF					HT		HW			HF				Size							
		OM4010	OM4025	RM2140	RM4025	RM4230	OM1205		TSP20	TSP25	TSK10	OM5005	OM5060	RM5005	GH1	d	i	s	r				
	SEET13T3AGFN-F01												●		13.4	-	3.97	2.55					
	SEHT1204AFFN												●	●	12.7	-	4.76	-					
	★ SEHT1204AFEN-M01	●	●												12.7	-	4.76	Facet					
	SEHT1204AFFN-M02					●									12.7	-	4.76	Facet					
	SEKN1203AFR								●	●					12.7	-	3.18	-					
	SEKN1504AFR							●		●					15.875	-	4.76	-					
	SEKT1204AFTN				●										12.7	-	4.76	-					
	SEKW1204AFN		●				●								12.7	-	4.76	-					
	SEMT13T3AGEN-M02			●	●										13.4	-	3.97	2.55					
	SPET060308ER-M01	●	●									●			7	7	3.18	0.8					
	NEW SPMT060308EDER-M04				●										7	7	3.18	0.8					
	SPET120408-M02	●	●									●			12.7	-	4.76	0.8					

★ 推薦 Recommended NEW 新品 New Product

• 長度單位 Unit of Length (mm)



銑削刀片 MILLING INSERTS

KOVIT

ISO 分類	P 合金鋼 Alloyed Steels M 不鏽鋼 Stainless Steels K 鑄鐵 Cast Iron N 鋁及鋁合金 Aluminum&Al S 高溫合金 Refractory Alloys H 高硬度材 Hard Material	鍍層超微粒 Layer coated micro grain										超硬微粒 Micro grain carbide alloy		硬質合金 Carbide alloy			尺寸 (mm) Size				圖形 Drawing
		CHF					HF		HW			d	i	s	r						
		OM4010	OM4025	RM4025	RM3130	RM4030	RM5005	RM5060	TSP20	TSP25	TSK10										
	SPGT050204-M02					●					●				5	-	2.38	0.4			
	SPGT060204-M02					●					●				6	-	2.38	0.4			
	SPGT07T308-M02					●					●				7.94	-	3.97	0.8			
	SPGT090408-M02					●					●				9.8	-	4.3	0.8			
	SPGT110408-M02					●					●				11.5	-	4.76	0.8			
	SPGT140512-M02					●					●				14.3	-	5.2	1.2			
	SPK43C2SR											●	●	12.7	-	4.76	-				
	SPK53C2SR											●	●	15.88	-	4.76	-				
	SPKN1203EDR												●	●	12.7	-	3.18	-			
	★ SPMT050204-M03			●	●										5	-	2.38	0.4			
	★ SPMT060204-M03			●	●										6	-	2.38	0.4			
	★ SPMT07T308-M03			●	●										7.94	-	3.97	0.8			
	★ SPMT090408-M03			●	●										9.8	-	4.3	0.8			
	★ SPMT110408-M03			●	●										11.5	-	4.76	0.8			
	★ SPMT140512-M03			●	●										14.3	-	5.2	1.2			
	★ SPMT050204-MT										●	●			5	-	2.38	0.4			
	★ SPMT060204-MT										●	●			6	-	2.38	0.4			
	★ SPMT07T308-MT										●	●			7.94	-	3.97	0.8			
	★ SPMT090408-MT										●	●			9.8	-	4.3	0.8			
	★ SPMT110408-MT										●	●			11.5	-	4.76	0.8			
	★ SPMT140512-MT										●	●			14.3	-	5.2	1.2			
	SPMT090308-M01			●										9.8	-	3.18	0.8				
	SPMT120408-R01			●										12.7	-	4.76	0.8				
	SPMW090304	●	●											9.525	-	3.18	0.4				

切削狀態 Cutting Condition :

- 連續切削 Continuous Cutting
- 一般切削 General Cutting
- 斷續切削 Interrupted Cutting

- MT 鋁合金專用 MT: Applicable to Aluminum ★ 推薦 Recommended

• 長度單位 Unit of Length (mm)



銑削刀片 MILLING INSERTS

KOVIT

ISO 分類	P	合金鋼 Alloyed Steels	○	○		○								切削狀態 Cutting Condition : ● 連續切削 Continuous Cutting ○ 一般切削 General Cutting ■ 斷續切削 Interrupted Cutting			
	M	不鏽鋼 Stainless Steels	○	○	○			○									
	K	鑄鐵 Cast Iron	○	○	○												
N	鋁及鋁合金 Aluminum&Al							■	■								
S	高溫合金 Refractory Alloys						○										
H	高硬度材 Hard Material	○															
形狀 Shape	規格 Spec.	鍍層超微粒 Layer coated micro grain					超微粒硬質合金 Micro grain carbide alloy			尺寸 (mm) Size				圖形 Drawing			
		CHF					HF			Size							
		OM4010	OM4025	RM3130	RM4025	RM535	OM5005	OM5060		d	i	s	r				
	SNFX1102	●	●					●					11	-	2.3	-	
	SNFX1103	●	●					●					11	-	2.7	-	
	SNFX1203	●	●					●					12.7	-	3.2	-	
	SNFX1205	●	●					●					12.7	-	5.4	-	
	SNFX1207	●	●					●					12.7	-	7	-	
	NEW SNFX120305	●	●					●					12.7	-	3.2	0.5	
	NEW SNFX120310	●	●					●					12.7	-	3.2	1	
	NEW SNFX120315	●	●					●					12.7	-	3.2	1.5	
	NEW SNFX120505	●	●					●					12.7	-	5.4	0.5	
	NEW SNFX120510	●	●					●					12.7	-	5.4	1	
	NEW SNFX120515	●	●					●					12.7	-	5.4	1.5	
	NEW SNFX120516	●	●					●					12.7	-	5.4	1.6	
	NEW SNFX120705	●	●					●					12.7	-	7	0.5	
	NEW SNFX120710	●	●					●					12.7	-	7	1	
NEW SNFX120715	●	●					●					12.7	-	7	1.5		
	NEW SNMU1206ANEN-M01			●	●								12.7	-	6.35	-	
	TCEX100302E-FR	●	●					●	●				5.8	10	3.18	0.2	
	★ TCEX100304E-FR	●	●					●	●				5.8	10	3.18	0.4	
	TCEX100302E-AR	●	●										5.8	10	3.18	0.2	
	TCEX100304E-AR	●	●					●					5.8	10	3.18	0.4	
	NEW TCEX100304E-MR							●					5.8	10	3.18	0.4	
	TCEX13T302E-FR	●	●					●	●				7.94	13.4	3.97	0.2	
	★ TCEX13T304E-FR	●	●					●	●				7.94	13.4	3.97	0.4	
	TCEX13T302E-AR	●	●										7.94	13.4	3.97	0.2	
	TCEX13T304E-AR	●	●										7.94	13.4	3.97	0.4	
	NEW TCEX13T304E-MR							●					7.94	13.4	3.97	0.4	
	NEW TCEX13T304E-CR							●					7.94	13.4	3.97	0.4	

- MR 鈦合金專用 MR: Applicable to Titanium - CR 鑽床倒角刀專用 CR: Applicable to Deburring And Chamfering Cutter
 ★ 推薦 Recommended NEW 新品 New Product

● 長度單位 Unit of Length (mm)



銑削刀片 MILLING INSERTS

KOVIT

ISO 分類	P	合金鋼 Alloyed Steels	○	○	○			○	○	○											
	M	不鏽鋼 Stainless Steels	○	○		○															
	K	鑄鐵 Cast Iron	○	○														○			
	N	鋁及鋁合金 Aluminum&Al									■	■	○								
S	高溫合金 Refractory Alloys				○																
H	高硬度材 Hard Material	○																			
形狀 Shape	規格 Spec.	鍍層超微粒 Layer coated micro grain			硬質合金 Carbide alloy			超微粒硬質合金 Micro grain carbide alloy			尺寸 (mm) Size						圖形 Drawing				
		CHF			HW			HF			W	L	d	i	s	r					
		OM4010	OM4025	PTE30	RM535	RM4025	TSP20	TSP25	TSK10	OM5005	OM5060	GH05									
	TCEX16T304E-FR	●	●						●	●							9.52	16.5	3.97	0.4	
	★ TCEX16T308E-FR	●	●						●	●							9.52	16.5	3.97	0.8	
	TCMX16T304E-AR	●	●														9.52	16.5	3.97	0.4	
	TCMX16T308E-AR	●	●														9.52	16.5	3.97	0.8	
	NEW TCEX16T308E-MR				●												9.52	16.5	3.97	0.8	
	TGAR4125	●	●									1.25	1.2	12.70	17.59	4.76	0.20				
	TGAR4150	●	●									1.50	3	12.70	17.59	4.76	0.20				
	TGAR4175	●	●									1.75	3	12.70	17.59	4.76	0.20				
	TGAR4200	●	●									2.00	3	12.70	17.59	4.76	0.20				
	TGAR4235	●	●									2.35	3	12.70	17.59	4.76	0.20				
	TGAR4250	●	●									2.50	4.5	12.70	17.59	4.76	0.30				
	TGAR4300	●	●									3.00	4.5	12.70	17.59	4.76	0.30				
	TGAR4350	●	●									3.50	4.5	12.70	17.59	4.76	0.30				
TGAR4400	●	●									4.00	4.5	12.70	17.59	4.76	0.40					
	TGTN3	●	●		●				●					-	11.3	3.1	0.2				
	TGTN4	●	●						●					-	11.3	4.1	0.25				
	TPKN1603PDR							●	●					9.525	-	3.18	-				
	TPKN2204PDR						●		●					12.7	-	4.76	-				
	TPMN160308							●	●					9.525	-	3.18	0.8				
	TPMN220412						●		●					12.7	-	4.76	1.2				
	WCKT030208									●				5.56	3.8	2.38	0.8				
	WCKT040208									●				6.35	4.3	2.38	0.8				
	WCKT050308									●				7.94	5.4	3.18	0.8				
	WCKT06T308									●				9.525	6.5	3.97	0.8				
	WCKT080408									●				12.7	8.7	4.76	0.8				
	WCMX030208-M01			●										5.56	3.8	2.38	0.8				
	WCMT040208-M01			●										6.35	4.3	2.38	0.8				
	WCMT050308-M01			●										7.94	5.4	3.18	0.8				
	WCMT06T308-M01			●										9.525	6.5	3.97	0.8				
	WCMX080412-M01			●										12.7	8.7	4.76	1.2				

- MR 鈦合金專用 MR : Applicable to Titanium ★ 推薦 Recommended NEW 新品 New Product

•長度單位 Unit of Length (mm)



鑽石刀片 POLYCRYSTALLINE DIAMOND INSERTS

KOVIT

ISO 分類	P	合金鋼 Alloyed Steels								切削狀態 Cutting Condition : ● 連續切削 Continuous Cutting ○ 一般切削 General Cutting ■ 斷續切削 Interrupted Cutting	
	M	不鏽鋼 Stainless Steels									
	K	鑄鐵 Cast Iron									
N	鋁及鋁合金 Aluminum&Al	●■	●	■							
S	高溫合金 Refractory Alloys										
H	高硬度材 Hard Material							○			
形狀 Shape	規格 Spec.	聚晶鑽石 Polycrystalline diamond				尺寸 (mm)				圖形 Drawing	
		DP				Size					
		PCD010	PCD020	PCD100	PCD250		d	i	s		r
	APGW160404PDFR-F01		●	●			9.525	16.5	4.76	-	
	APGW1604PDFR-F01		●	●			9.525	16.5	4.76	-	
	CCGW060202FN-F01		●	●			6.35	6.5	2.38	0.2	
	CCGW060204FN-F01		●	●			6.35	6.5	2.38	0.4	
	CCGW09T304FN-F01		●	●			9.525	9.7	3.97	0.4	
	CCGW120404FN-F01		●	●			12.7	12.9	4.76	0.4	
	CNGA120404FN-F01		●	●			12.7	12.9	4.76	0.4	
	DCGW070202FN-F01		●	●			6.35	7.8	2.38	0.2	
	DCGW070204FN-F01		●	●			6.35	7.8	2.38	0.4	
	DCGW11T302FN-F01		●	●			9.525	11.6	3.97	0.2	
	DCGW11T304FN-F01		●	●			9.525	11.6	3.97	0.4	
	SEGW120404AFFN-F01		●	●			12.7	-	4.76	-	
	SEGW1204AFFN-F01		●	●			12.7	-	4.76	-	

•長度單位 Unit of Length (mm)



鑽石刀片 POLYCRYSTALLINE DIAMOND INSERTS

KOVIT


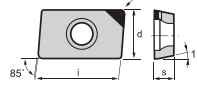

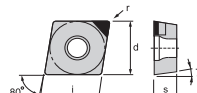

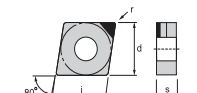
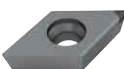
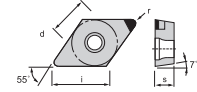

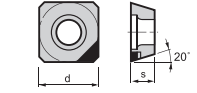
ISO 分類	P	合金鋼 Alloyed Steels								切削狀態 Cutting Condition : ● 連續切削 Continuous Cutting ○ 一般切削 General Cutting ■ 斷續切削 Interrupted Cutting
	M	不鏽鋼 Stainless Steels								
	K	鑄鐵 Cast Iron								
N	鋁及鋁合金 Aluminum&Al	●■	●	■	○					
S	高溫合金 Refractory Alloys									
H	高硬度材 Hard Material									
形狀 Shape	規格 Spec.	聚晶鑽石 Polycrystalline diamond				尺寸 (mm)				圖形 Drawing
		DP				Size				
		PCD010	PCD020	PCD100	PCD250	d	i	s	r	
	TBGW060102FN-F01		●	●		3.97	6.4	1.59	0.2	
	TBGW060104FN-F01		●	●		3.97	6.4	1.59	0.4	
	TCGW110202FN-F01		●	●		6.35	11	2.38	0.2	
	TCGW110204FN-F01		●	●		6.35	11	2.38	0.4	
	TCGW16T304FN-F01		●	●		9.525	16.5	3.97	0.4	
	TNGA160402FN-F01		●	●		9.525	16.5	4.76	0.2	
	TNGA160404FN-F01		●	●		9.525	16.5	4.76	0.4	
	TPGW090202FN-F01		●	●		5.56	9.6	2.38	0.2	
	TPGW090204FN-F01		●	●		5.56	9.6	2.38	0.4	
	TPGW110302FN-F01		●	●		6.35	11	3.18	0.2	
	TPGW110304FN-F01		●	●		6.35	11	3.18	0.4	
	TPGW080202FN-F01		●	●		4.76	8.2	2.38	0.2	
	TPGW080204FN-F01		●	●		4.76	8.2	2.38	0.4	
	VCGW160402FN-F01		●	●		9.525	16.5	4.76	0.2	
	VCGW160404FN-F01		●	●		9.525	16.5	4.76	0.4	
	VCGW160408FN-F01		●	●		9.525	16.5	4.76	0.8	

•長度單位 Unit of Length (mm)



氮化硼刀片 CUBIC BORON NITRIDE INSERTS

KOVIT

ISO 分類	<table border="1"> <tr> <td>P</td><td>合金鋼 Alloyed Steels</td><td></td><td></td><td></td><td></td></tr> <tr> <td>M</td><td>不鏽鋼 Stainless Steels</td><td></td><td></td><td></td><td></td></tr> <tr> <td>K</td><td>鑄鐵 Cast Iron</td><td></td><td></td><td>■</td><td></td></tr> <tr> <td>N</td><td>鋁及鋁合金 Aluminum&Al</td><td></td><td></td><td></td><td></td></tr> <tr> <td>S</td><td>高溫合金 Refractory Alloys</td><td></td><td></td><td></td><td></td></tr> <tr> <td>H</td><td>高硬度材 Hard Material</td><td>●</td><td>■</td><td></td><td></td></tr> </table>					P	合金鋼 Alloyed Steels					M	不鏽鋼 Stainless Steels					K	鑄鐵 Cast Iron			■		N	鋁及鋁合金 Aluminum&Al					S	高溫合金 Refractory Alloys					H	高硬度材 Hard Material	●	■			立方氮化硼 CBN				尺寸 (mm)				圖形 Drawing
	P	合金鋼 Alloyed Steels																																																
	M	不鏽鋼 Stainless Steels																																																
K	鑄鐵 Cast Iron			■																																														
N	鋁及鋁合金 Aluminum&Al																																																	
S	高溫合金 Refractory Alloys																																																	
H	高硬度材 Hard Material	●	■																																															
形狀 Shape	規格 Spec.	CBN				Size																																												
		CBN250	CBN300	CBN400		d	i	s	r																																									
	APGW1604PDER	●				9.525	16.5	4.76	-																																									
	APGW1604PDFR	●				9.525	16.5	4.76	-																																									
	APGW1604PDTR	●				9.525	16.5	4.76	-																																									
	APGW1604PDSR	●				9.525	16.5	4.76	-																																									
	CCGW060202SN	●				6.35	6.5	2.38	0.2																																									
	CCGW060204SN	●				6.35	6.5	2.38	0.4																																									
	CCGW060208SN	●				6.35	6.5	2.38	0.8																																									
	CCGW09T302SN	●				9.525	9.7	3.97	0.2																																									
	CCGW09T304SN	●				9.525	9.7	3.97	0.4																																									
	CCGW09T308SN	●				9.525	9.7	3.97	0.8																																									
	CCGW120404SN	●				12.7	12.9	4.76	0.4																																									
	CNGA120404SN	●				12.7	12.9	4.76	0.4																																									
	CNGA120408SN	●				12.7	12.9	4.76	0.8																																									
	DCGW070202SN	●				6.35	7.8	2.38	0.2																																									
	DCGW070204SN	●				6.35	7.8	2.38	0.4																																									
	DCGW070208SN	●				6.35	7.8	2.38	0.8																																									
	DCGW11T302SN	●				9.525	11.6	3.97	0.2																																									
	DCGW11T304SN	●				9.525	11.6	3.97	0.4																																									
	SEGW1204AFSN	●				12.7	-	4.76	-																																									
	SEGW1204AFTN	●				12.7	-	4.76	-																																									
	SEGW1204AFEN	●				12.7	-	4.76	-																																									
	SEGW1204AFFN	●				12.7	-	4.76	-																																									

切削狀態 Cutting Condition :

- 連續切削 Continuous Cutting
- 一般切削 General Cutting
- 斷續切削 Interrupted Cutting

• 長度單位 Unit of Length (mm)



氮化硼刀片 CUBIC BORON NITRIDE INSERTS

KOVIT

ISO 分類	P	合金鋼 Alloyed Steels								切削狀態 Cutting Condition : ● 連續切削 Continuous Cutting ○ 一般切削 General Cutting ■ 斷續切削 Interrupted Cutting
	M	不鏽鋼 Stainless Steels								
	K	鑄鐵 Cast Iron			■					
N	鋁及鋁合金 Aluminum&Al									
S	高溫合金 Refractory Alloys									
H	高硬度材 Hard Material	●	■							
形狀 Shape	規格 Spec.	立方氮化硼 CBN				尺寸 (mm)				圖形 Drawing
		CBN				Size				
		CBN250	CBN300	CBN400		d	i	s	r	
	TBGW060104SN	●				3.97	6.4	1.59	0.4	
	TNGA160402SN	●				9.525	16.5	4.76	0.2	
	TNGA160404SN	●				9.525	16.5	4.76	0.4	
	TNGA160408SN	●				9.525	16.5	4.76	0.8	
	TPGW080202SN	●				4.76	8.2	2.38	0.2	
	TPGW080204SN	●				4.76	8.2	2.38	0.4	
	TPGW090202SN	●				5.56	9.6	2.38	0.2	
	TPGW090204SN	●				5.56	9.6	2.38	0.4	
	TPGW110302SN	●				6.35	11	3.18	0.2	
	TPGW110304SN	●				6.35	11	3.18	0.4	
	TPGW110308SN	●				6.35	11	3.18	0.8	
	TPGW16T302SN	●				9.525	16.5	3.97	0.2	
	TPGW16T304SN	●				9.525	16.5	3.97	0.4	
	VCGW110302SN	●				6.35	11	3.18	0.2	
	VCGW110304SN	●				6.35	11	3.18	0.4	
	VCGW160402SN	●				9.525	16.5	4.76	0.2	
	VCGW160404SN	●				9.525	16.5	4.76	0.4	
	VCGW160408SN	●				9.525	16.5	4.76	0.8	
	VNGA160404SN	●				9.525	16.5	4.76	0.4	
	VNGA160408SN	●				9.525	16.5	4.76	0.8	

•長度單位 Unit of Length (mm)



毛胚刀片
BLANK INSERTS

KOVIT

ISO 分類	P	合金鋼 Alloyed Steels									切削狀態 Cutting Condition :	
	M	不鏽鋼 Stainless Steels										● 連續切削 Continuous Cutting ○ 一般切削 General Cutting ■ 斷續切削 Interrupted Cutting
	K	鑄鐵 Cast Iron										
N	鋁及鋁合金 Aluminum&Al											
S	高溫合金 Refractory Alloys											
H	高硬度材 Hard Material											
形狀 Shape	規格 Spec.	硬質合金 Carbide Alloy						尺寸 (mm)			圖形 Drawing	
		HC						Size				
		BM						d	i	s		
	APMW1003	●						7.0	10.85	3.58		
	APMW1604	●						9.9	16.8	5.1		
	CCMW0602	●						6.85	-	2.78		
	CCMW09T3	●						9.9	-	4.27		
	CCMW1204	●						13.1	-	5.1		
	CNMW1204	●						13.1	-	5.1		
	DCMW0702	●						6.85	-	2.78		
	DCMW11T3	●						9.9	-	4.27		
	SEMW1204	●						13.1	-	5.1		
	TBMW0601	●						4.27	-	2.0		
	TCMW0902	●						5.96	-	2.78		
	TCMW1102	●						6.75	-	2.78		
	TCMW16T3	●						9.9	-	4.27		
	TNMW1604	●						9.9	-	5.1		
	TPMW0802	●						5.1	-	2.78		
	TPMW0902	●						5.96	-	2.78		
	TPMW1103	●						6.75	-	3.58		
	TPMW16T3	●						9.9	-	4.27		
	VCMW1103	●						6.75	-	3.58		
	VCMW1604	●						9.9	-	5.1		

•長度單位 Unit of Length (mm)