



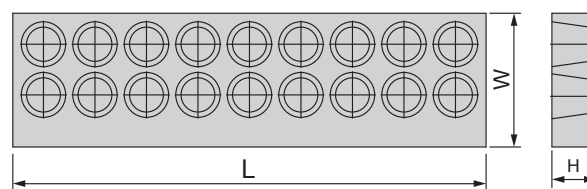
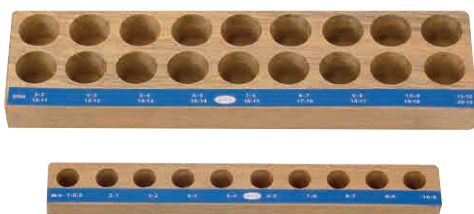
表面特殊處理

特點 Feature

- 表面粗糙度 RA0.25，提升刀桿與螺帽貼合度，增強穩定性
- 表面特殊處理，具較佳防鏽功能，延長使用壽命
- 夾持精度 0.01mm 內
- 夾持力提升 15%

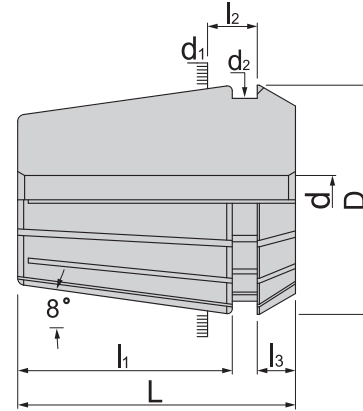
- Surface roughness Ra 0.25, improves the fitness between chuck and nut, also increases the stabilities.
- Special surface treatment provides a better rust-proofing and extend the life cycle.
- Clamping accuracy is within 0.01mm.
- Clamping force improved by 15%.

規格 Spec.	內容物 Contents		重量 (KGS) Weight
	筒夾 Collet Size	數量 Qty.	
ER16-A-6P-SET	1,2,4,6,8,10	1	-
ER20-A-6P-SET	2,4,6,8,10,12	1	-
ER16-A-10P-SET	1,2,3,4,5,6,7,8,9,10	1	-
ER20-A-12P-SET	2,3,4,5,6,7,8,9,10,11,12,13	1	-



規格 Spec.	L	W	H	數量 (孔) Qty	重量 (KGS) Weight
ER8-MV	210	20	13	9	0.01
ER11-MV	210	20	13	13	0.01
ER16-MV	275	35	22	10	0.14
ER20-MV	275	35	22	12	0.12
ER25-MV	275	77	26	16	0.18
ER32-MV	340	90	30	18	0.48
ER40-MV	265	210	38	24	0.76
ER50-MV	235	210	37	12	0.64

• 長度單位 Unit of Length (mm)

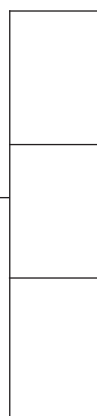


特點 Feature

- 材質 :SUJ2。(高碳軸承鋼：在熱處理後，具有堅韌的硬度與韌性，更好的耐磨耗性，且彈性佳使用壽命更長)
- 硬度 :HRC46°
- 表面粗糙度 RZ2.5 以內
- 同心度按 DIN 標準規範全數檢驗，共計有三種精度等級，普通級 0.02mm、A 級 0.01mm 及 UP 級 0.005mm
- UP 級建議配合 HSP 螺帽使用，其穩定性更好
- 用於夾持鑽頭、螺絲攻、銑刀、鉸刀等工具
- 具有彈性伸縮的功能、應用範圍廣、附變化性
- 訂購時請告知所需精度等級

- Steel:SUJ2 (High-carbon bearing steel : After heat treatment, it has hardness and toughness, better grinding quality, good flexibility, and longer using life span.)
- Hardness: HRC46°
- Surface roughness : within RZ2.5.
- The concentricity is totally examined according to DIN norm. There are three kinds of classes for precision : general class 0.02mm, A class 0.01mm, and UP class 0.005mm.
- UP class is recommended to be used with HSP clamping nut. It will have better stability.
- It used for the cutting tools lock drills, taps, mills, and remers, etc.
- It has flexibility and can be applied widely and variably.
- Please inform the required precision grade when ordering.

規格 Spec.	尺寸範圍 Size Range	L	l ₁	l ₂	l ₃	D	d ₁	d ₂	重量 (KGS) Weight
ER8	1~5.0	13.5	10.8	2.98	1.5	8.5	8	6.5	0.01
ER11	1~7.0	18	13.5	3.8	2.5	11.5	11	9.5	0.01
ER16	1~10.0	27.5	20.8	6.26	4	17	16	13.8	0.03
ER20	1~13.0	31.5	23.9	6.36	4.8	21	20	17.4	0.04
ER25	2~16.0	34	25.9	6.66	5	26	25	22	0.06
ER32	2~20.0	40	30.9	7.16	5.5	33	32	29.2	0.10
ER40	3~26.0	46	34.9	7.66	7	41	40	36.2	0.25
ER50	6~34.0	60	46.0	13.4	8.5	52	50	46	0.45



ER 彈性筒夾
ER COLLET



ER-EO 止水筒夾
ER-EO COOLANT COLLET



ER-ES 斜槽止水筒夾
ER-ES STEEL SEALED COLLET



ER 剛性攻牙筒夾
ER RIGID TAP COLLET

• 長度單位 Unit of Length (mm)

精度 (普通級) Accuracy : 0.02mm



ER8

規格 Spec.	夾持範圍 Clamp Range	精度等級 Precision
ER8-1	1~0.5	0.02
ER8-1.5	1.5~1	0.02
ER8-2	2~1.5	0.02
ER8-2.5	2.5~2	0.02
ER8-3	3~2.5	0.02
ER8-3.5	3.5~3	0.02
ER8-4	4~3.5	0.02
ER8-4.5	4.5~4	0.02
ER8-5	5~4.5	0.02

ER11

規格 Spec.	夾持範圍 Clamp Range	精度等級 Precision
ER11-1	1~0.5	0.02
ER11-1.5	1.5~1	0.02
ER11-2	2~1.5	0.02
ER11-2.5	2.5~2	0.02
ER11-3	3~2.5	0.02
ER11-3.5	3.5~3	0.02
ER11-4	4~3.5	0.02
ER11-4.5	4.5~4	0.02
ER11-5	5~4.5	0.02
ER11-5.5	5.5~5	0.02
ER11-6	6~5.5	0.02
ER11-6.5	6.5~6	0.02
ER11-7	7~6.5	0.02

ER16

規格 Spec.	夾持範圍 Clamp Range	精度等級 Precision
ER16-1	1~0.5	0.02
ER16-1.5	1.5~1	0.02
ER16-2	2~1.5	0.02
ER16-2.5	2.5~2	0.02
ER16-3	3~2	0.02
ER16-3.5	3.5~2.5	0.02
ER16-4	4~3	0.02
ER16-4.5	4.5~3.5	0.02
ER16-5	5~4	0.02
ER16-5.5	5.5~4.5	0.02
ER16-6	6~5	0.02
ER16-6.5	6.5~5.5	0.02

ER16

規格 Spec.	夾持範圍 Clamp Range	精度等級 Precision
ER16-7	7~6	0.02
ER16-7.5	7.5~6.5	0.02
ER16-8	8~7	0.02
ER16-8.5	8.5~7.5	0.02
ER16-9	9~8	0.02
ER16-9.5	9.5~8.5	0.02
ER16-10	10~9	0.02

ER20

規格 Spec.	夾持範圍 Clamp Range	精度等級 Precision
ER20-1	1~0.5	0.02
ER20-1.5	1.5~1	0.02
ER20-2	2~1.5	0.02
ER20-2.5	2.5~2	0.02
ER20-3	3~2	0.02
ER20-3.5	3.5~2.5	0.02
ER20-4	4~3	0.02
ER20-4.5	4.5~3.5	0.02
ER20-5	5~4	0.02
ER20-5.5	5.5~4.5	0.02
ER20-6	6~5	0.02
ER20-6.5	6.5~5.5	0.02
ER20-7	7~6	0.02
ER20-7.5	7.5~6.5	0.02
ER20-8	8~7	0.02
ER20-8.5	8.5~7.5	0.02
ER20-9	9~8	0.02
ER20-9.5	9.5~8.5	0.02
ER20-10	10~9	0.02
ER20-10.5	10.5~9.5	0.02
ER20-11	11~10	0.02
ER20-11.5	11.5~10.5	0.02
ER20-12	12~11	0.02
ER20-12.5	12.5~11.5	0.02
ER20-13	13~12	0.02

ER25

規格 Spec.	夾持範圍 Clamp Range	精度等級 Precision
ER25-1	1~0.5	0.02
ER25-1.5	1.5~1	0.02

ER25

規格 Spec.	夾持範圍 Clamp Range	精度等級 Precision
ER25-2	2~1.5	0.02
ER25-2.5	2.5~2	0.02
ER25-3	3~2	0.02
ER25-3.5	3.5~2.5	0.02
ER25-4	4~3	0.02
ER25-4.5	4.5~3.5	0.02
ER25-5	5~4	0.02
ER25-5.5	5.5~4.5	0.02
ER25-6	6~5	0.02
ER25-6.5	6.5~5.5	0.02
ER25-7	7~6	0.02
ER25-7.5	7.5~6.5	0.02
ER25-8	8~7	0.02
ER25-8.5	8.5~7.5	0.02
ER25-9	9~8	0.02
ER25-9.5	9.5~8.5	0.02
ER25-10	10~9	0.02
ER25-10.5	10.5~9.5	0.02
ER25-11	11~10	0.02
ER25-11.5	11.5~10.5	0.02
ER25-12	12~11	0.02
ER25-12.5	12.5~11.5	0.02
ER25-13	13~12	0.02
ER25-13.5	13.5~12.5	0.02
ER25-14	14~13	0.02
ER25-14.5	14.5~13.5	0.02
ER25-15	15~14	0.02
ER25-15.5	15.5~14.5	0.02
ER25-16	16~15	0.02

ER32

規格 Spec.	夾持範圍 Clamp Range	精度等級 Precision
ER32-2	2~1.5	0.02
ER32-2.5	2.5~2	0.02
ER32-3	3~2	0.02
ER32-3.5	3.5~2.5	0.02
ER32-4	4~3	0.02
ER32-4.5	4.5~3.5	0.02
ER32-5	5~4	0.02
ER32-5.5	5.5~4.5	0.02
ER32-6	6~5	0.02

• 長度單位 Unit of Length (mm)

精度 (普通級) Accuracy : 0.02mm



ER32

規格 Spec.	夾持範圍 Clamp Range	精度等級 Precision
ER32-6.5	6.5~5.5	0.02
ER32-7	7~6	0.02
ER32-7.5	7.5~6.5	0.02
ER32-8	8~7	0.02
ER32-8.5	8.5~7.5	0.02
ER32-9	9~8	0.02
ER32-9.5	9.5~8.5	0.02
ER32-10	10~9	0.02
ER32-10.5	10.5~9.5	0.02
ER32-11	11~10	0.02
ER32-11.5	11.5~10.5	0.02
ER32-12	12~11	0.02
ER32-12.5	12.5~11.5	0.02
ER32-13	13~12	0.02
ER32-13.5	13.5~12.5	0.02
ER32-14	14~13	0.02
ER32-14.5	14.5~13.5	0.02
ER32-15	15~14	0.02
ER32-15.5	15.5~14.5	0.02
ER32-16	16~15	0.02
ER32-16.5	16.5~15.5	0.02
ER32-17	17~16	0.02
ER32-17.5	17.5~16.5	0.02
ER32-18	18~17	0.02
ER32-18.5	18.5~17.5	0.02
ER32-19	19~18	0.02
ER32-19.5	19.5~18.5	0.02
ER32-20	20~19	0.02

ER40

規格 Spec.	夾持範圍 Clamp Range	精度等級 Precision
ER40-3	3~2	0.02
ER40-3.5	3.5~2.5	0.02
ER40-4	4~3	0.02
ER40-4.5	4.5~3.5	0.02
ER40-5	5~4	0.02
ER40-5.5	5.5~4.5	0.02
ER40-6	6~5	0.02
ER40-6.5	6.5~5.5	0.02
ER40-7	7~6	0.02
ER40-7.5	7.5~6.5	0.02

ER40

規格 Spec.	夾持範圍 Clamp Range	精度等級 Precision
ER40-8	8~7	0.02
ER40-8.5	8.5~7.5	0.02
ER40-9	9~8	0.02
ER40-9.5	9.5~8.5	0.02
ER40-10	10~9	0.02
ER40-10.5	10.5~9.5	0.02
ER40-11	11~10	0.02
ER40-11.5	11.5~10.5	0.02
ER40-12	12~11	0.02
ER40-12.5	12.5~11.5	0.02
ER40-13	13~12	0.02
ER40-13.5	13.5~12.5	0.02
ER40-14	14~13	0.02
ER40-14.5	14.5~13.5	0.02
ER40-15	15~14	0.02
ER40-15.5	15.5~14.5	0.02
ER40-16	16~15	0.02
ER40-16.5	16.5~15.5	0.02
ER40-17	17~16	0.02
ER40-17.5	17.5~16.5	0.02
ER40-18	18~17	0.02
ER40-18.5	18.5~17.5	0.02
ER40-19	19~18	0.02
ER40-19.5	19.5~18.5	0.02
ER40-20	20~19	0.02
ER40-20.5	20.5~19.5	0.02
ER40-21	21~20	0.02
ER40-21.5	21.5~20.5	0.02
ER40-22	22~21	0.02
ER40-22.5	22.5~21.5	0.02
ER40-23	23~22	0.02
ER40-23.5	23.5~22.5	0.02
ER40-24	24~23	0.02
ER40-24.5	24.5~23.5	0.02
ER40-25	25~24	0.02
ER40-25.5	25.5~24.5	0.02
ER40-26	26~25	0.02

ER50

規格 Spec.	夾持範圍 Clamp Range	精度等級 Precision
ER50-6	6~5	0.02
ER50-7	7~6	0.02
ER50-8	8~7	0.02
ER50-9	9~8	0.02
ER50-10	10~9	0.02
ER50-11	11~9	0.02
ER50-12	12~10	0.02
ER50-13	13~11	0.02
ER50-14	14~12	0.02
ER50-15	15~13	0.02
ER50-16	16~14	0.02
ER50-17	17~15	0.02
ER50-18	18~16	0.02
ER50-19	19~17	0.02
ER50-20	20~18	0.02
ER50-21	21~19	0.02
ER50-22	22~20	0.02
ER50-23	23~21	0.02
ER50-24	24~22	0.02
ER50-25	25~23	0.02
ER50-26	26~24	0.02
ER50-27	27~25	0.02
ER50-28	28~26	0.02
ER50-29	29~27	0.02
ER50-30	30~28	0.02
ER50-31	31~29	0.02
ER50-32	32~30	0.02
ER50-33	33~31	0.02
ER50-34	34~32	0.02

精度 (A 級) Accuracy : 0.01mm



ER8-A

規格 Spec.	夾持範圍 Clamp Range	精度等級 Precision
ER8-1-A	1~0.5	0.01
ER8-1.5-A	1.5~1	0.01
ER8-2-A	2~1.5	0.01
ER8-2.5-A	2.5~2	0.01
ER8-3-A	3~2.5	0.01
ER8-3.5-A	3.5~3	0.01
ER8-4-A	4~3.5	0.01
ER8-4.5-A	4.5~4	0.01
ER8-5-A	5~4.5	0.01

ER11-A

規格 Spec.	夾持範圍 Clamp Range	精度等級 Precision
ER11-1-A	1~0.5	0.01
ER11-1.5-A	1.5~1	0.01
ER11-2-A	2~1.5	0.01
ER11-2.5-A	2.5~2	0.01
ER11-3-A	3~2.5	0.01
ER11-3.5-A	3.5~3	0.01
ER11-4-A	4~3.5	0.01
ER11-4.5-A	4.5~4	0.01
ER11-5-A	5~4.5	0.01
ER11-5.5-A	5.5~4.5	0.01
ER11-6-A	6~5.5	0.01
ER11-6.5-A	6.5~6	0.01
ER11-7-A	7~6.5	0.01

ER16-A

規格 Spec.	夾持範圍 Clamp Range	精度等級 Precision
ER16-1-A	1~0.5	0.01
ER16-1.5-A	1.5~1	0.01
ER16-2-A	2~1.5	0.01
ER16-2.5-A	2.5~2	0.01
ER16-3-A	3~2	0.01
ER16-3.5-A	3.5~2.5	0.01
ER16-4-A	4~3	0.01
ER16-4.5-A	4.5~3.5	0.01
ER16-5-A	5~4	0.01
ER16-5.5-A	5.5~4.5	0.01
ER16-6-A	6~5	0.01
ER16-6.5-A	6.5~5.5	0.01

ER16-A

規格 Spec.	夾持範圍 Clamp Range	精度等級 Precision
ER16-7-A	7~6	0.01
ER16-7.5-A	7.5~6.5	0.01
ER16-8-A	8~7	0.01
ER16-8.5-A	8.5~7.5	0.01
ER16-9-A	9~8	0.01
ER16-9.5-A	9.5~8.5	0.01
ER16-10-A	10~9	0.01

ER20-A

規格 Spec.	夾持範圍 Clamp Range	精度等級 Precision
ER20-1-A	1~0.5	0.01
ER20-1.5-A	1.5~1	0.01
ER20-2-A	2~1.5	0.01
ER20-2.5-A	2.5~2	0.01
ER20-3-A	3~2	0.01
ER20-3.5-A	3.5~2.5	0.01
ER20-4-A	4~3	0.01
ER20-4.5-A	4.5~3.5	0.01
ER20-5-A	5~4	0.01
ER20-5.5-A	5.5~4.5	0.01
ER20-6-A	6~5	0.01
ER20-6.5-A	6.5~5.5	0.01
ER20-7-A	7~6	0.01
ER20-7.5-A	7.5~6.5	0.01
ER20-8-A	8~7	0.01
ER20-8.5-A	8.5~7.5	0.01
ER20-9-A	9~8	0.01
ER20-9.5-A	9.5~8.5	0.01
ER20-10-A	10~9	0.01
ER20-10.5-A	10.5~9.5	0.01
ER20-11-A	11~10	0.01
ER20-11.5-A	11.5~10.5	0.01
ER20-12-A	12~11	0.01
ER20-12.5-A	12.5~11.5	0.01
ER20-13-A	13~12	0.01

ER25-A

規格 Spec.	夾持範圍 Clamp Range	精度等級 Precision
ER25-1-A	1~0.5	0.01
ER25-1.5-A	1.5~1	0.01

ER25-A

規格 Spec.	夾持範圍 Clamp Range	精度等級 Precision
ER25-2-A	2~1.5	0.01
ER25-2.5-A	2.5~2	0.01
ER25-3-A	3~2	0.01
ER25-3.5-A	3.5~2.5	0.01
ER25-4-A	4~3	0.01
ER25-4.5-A	4.5~3.5	0.01
ER25-5-A	5~4	0.01
ER25-5.5-A	5.5~4.5	0.01
ER25-6-A	6~5	0.01
ER25-6.5-A	6.5~5.5	0.01
ER25-7-A	7~6	0.01
ER25-7.5-A	7.5~6.5	0.01
ER25-8-A	8~7	0.01
ER25-8.5-A	8.5~7.5	0.01
ER25-9-A	9~8	0.01
ER25-9.5-A	9.5~8.5	0.01
ER25-10-A	10~9	0.01
ER25-10.5-A	10.5~9.5	0.01
ER25-11-A	11~10	0.01
ER25-11.5-A	11.5~10.5	0.01
ER25-12-A	12~11	0.01
ER25-12.5-A	12.5~11.5	0.01
ER25-13-A	13~12	0.01
ER25-13.5-A	13.5~12.5	0.01
ER25-14-A	14~13	0.01
ER25-14.5-A	14.5~13.5	0.01
ER25-15-A	15~14	0.01
ER25-15.5-A	15.5~14.5	0.01
ER25-16-A	16~15	0.01

ER32-A

規格 Spec.	夾持範圍 Clamp Range	精度等級 Precision
ER32-2-A	2~1.5	0.01
ER32-2.5-A	2.5~2	0.01
ER32-3-A	3~2	0.01
ER32-3.5-A	3.5~2.5	0.01
ER32-4-A	4~3	0.01
ER32-4.5-A	4.5~3.5	0.01
ER32-5-A	5~4	0.01
ER32-5.5-A	5.5~4.5	0.01
ER32-6-A	6~5	0.01

• 長度單位 Unit of Length (mm)

精度 (A 級) Accuracy : 0.01mm



ER32-A

規格 Spec.	夾持範圍 Clamp Range	精度等級 Precision
ER32-6.5-A	6.5~5.5	0.01
ER32-7-A	7~6	0.01
ER32-7.5-A	7.5~6.5	0.01
ER32-8-A	8~7	0.01
ER32-8.5-A	8.5~7.5	0.01
ER32-9-A	9~8	0.01
ER32-9.5-A	9.5~8.5	0.01
ER32-10-A	10~9	0.01
ER32-10.5-A	10.5~9.5	0.01
ER32-11-A	11~10	0.01
ER32-11.5-A	11.5~10.5	0.01
ER32-12-A	12~11	0.01
ER32-12.5-A	12.5~11.5	0.01
ER32-13-A	13~12	0.01
ER32-13.5-A	13.5~12.5	0.01
ER32-14-A	14~13	0.01
ER32-14.5-A	14.5~13.5	0.01
ER32-15-A	15~14	0.01
ER32-15.5-A	15.5~14.5	0.01
ER32-16-A	16~15	0.01
ER32-16.5-A	16.5~15.5	0.01
ER32-17-A	17~16	0.01
ER32-17.5-A	17.5~16.5	0.01
ER32-18-A	18~17	0.01
ER32-18.5-A	18.5~17.5	0.01
ER32-19-A	19~18	0.01
ER32-19.5-A	19.5~18.5	0.01
ER32-20-A	20~19	0.01

ER40-A

規格 Spec.	夾持範圍 Range	精度等級 Precision
ER40-3-A	3~2	0.01
ER40-3.5-A	3.5~2.5	0.01
ER40-4-A	4~3	0.01
ER40-4.5-A	4.5~3.5	0.01
ER40-5-A	5~4	0.01
ER40-5.5-A	5.5~4.5	0.01
ER40-6-A	6~5	0.01
ER40-6.5-A	6.5~5.5	0.01
ER40-7-A	7~6	0.01
ER40-7.5-A	7.5~6.5	0.01

ER40-A

規格 Spec.	夾持範圍 Clamp Range	精度等級 Precision
ER40-8-A	8~7	0.01
ER40-8.5-A	8.5~7.5	0.01
ER40-9-A	9~8	0.01
ER40-9.5-A	9.5~8.5	0.01
ER40-10-A	10~9	0.01
ER40-10.5-A	10.5~9.5	0.01
ER40-11-A	11~10	0.01
ER40-11.5-A	11.5~10.5	0.01
ER40-12-A	12~11	0.01
ER40-12.5-A	12.5~11.5	0.01
ER40-13-A	13~12	0.01
ER40-13.5-A	13.5~12.5	0.01
ER40-14-A	14~13	0.01
ER40-14.5-A	14.5~13.5	0.01
ER40-15-A	15~14	0.01
ER40-15.5-A	15.5~14.5	0.01
ER40-16-A	16~15	0.01
ER40-16.5-A	16.5~15.5	0.01
ER40-17-A	17~16	0.01
ER40-17.5-A	17.5~16.5	0.01
ER40-18-A	18~17	0.01
ER40-18.5-A	18.5~17.5	0.01
ER40-19-A	19~18	0.01
ER40-19.5-A	19.5~18.5	0.01
ER40-20-A	20~19	0.01
ER40-20.5-A	20.5~19.5	0.01
ER40-21-A	21~20	0.01
ER40-21.5-A	21.5~20.5	0.01
ER40-22-A	22~21	0.01
ER40-22.5-A	22.5~21.5	0.01
ER40-23-A	23~22	0.01
ER40-23.5-A	23.5~22.5	0.01
ER40-24-A	24~23	0.01
ER40-24.5-A	24.5~23.5	0.01
ER40-25-A	25~24	0.01
ER40-25.5-A	25.5~24.5	0.01
ER40-26-A	26~25	0.01

ER50-A

規格 Spec.	夾持範圍 Clamp Range	精度等級 Precision
ER50-6-A	6~5	0.01
ER50-7-A	7~6	0.01
ER50-8-A	8~7	0.01
ER50-9-A	9~8	0.01
ER50-10-A	10~9	0.01
ER50-11-A	11~9	0.01
ER50-12-A	12~10	0.01
ER50-13-A	13~11	0.01
ER50-14-A	14~12	0.01
ER50-15-A	15~13	0.01
ER50-16-A	16~14	0.01
ER50-17-A	17~15	0.01
ER50-18-A	18~16	0.01
ER50-19-A	19~17	0.01
ER50-20-A	20~18	0.01
ER50-21-A	21~19	0.01
ER50-22-A	22~20	0.01
ER50-23-A	23~21	0.01
ER50-24-A	24~22	0.01
ER50-25-A	25~23	0.01
ER50-26-A	26~24	0.01
ER50-27-A	27~25	0.01
ER50-28-A	28~26	0.01
ER50-29-A	29~27	0.01
ER50-30-A	30~28	0.01
ER50-31-A	31~29	0.01
ER50-32-A	32~30	0.01
ER50-33-A	33~31	0.01
ER50-34-A	34~32	0.01



ER8-UP

規格 Spec.	夾持範圍 Clamp Range	精度等級 Precision
ER8-1-UP	1~0.5	0.005
ER8-1.5-UP	1.5~1	0.005
ER8-2-UP	2~1.5	0.005
ER8-2.5-UP	2.5~2	0.005
ER8-3-UP	3~2.5	0.005
ER8-3.5-UP	3.5~3	0.005
ER8-4-UP	4~3.5	0.005
ER8-4.5-UP	4.5~4	0.005
ER8-5-UP	5~4.5	0.005

ER11-UP

規格 Spec.	夾持範圍 Clamp Range	精度等級 Precision
ER11-1-UP	1~0.5	0.005
ER11-1.5-UP	1.5~1	0.005
ER11-2-UP	2~1.5	0.005
ER11-2.5-UP	2.5~2	0.005
ER11-3-UP	3~2.5	0.005
ER11-3.5-UP	3.5~3	0.005
ER11-4-UP	4~3.5	0.005
ER11-4.5-UP	4.5~4	0.005
ER11-5-UP	5~4.5	0.005
ER11-5.5-UP	5.5~5	0.005
ER11-6-UP	6~5.5	0.005
ER11-6.5-UP	6.5~6	0.005
ER11-7-UP	7~6.5	0.005

ER16-UP

規格 Spec.	夾持範圍 Clamp Range	精度等級 Precision
ER16-1-UP	1~0.5	0.005
ER16-1.5-UP	1.5~1	0.005
ER16-2-UP	2~1.5	0.005
ER16-2.5-UP	2.5~2	0.005
ER16-3-UP	3~2	0.005
ER16-3.5-UP	3.5~2.5	0.005
ER16-4-UP	4~3	0.005
ER16-4.5-UP	4.5~3.5	0.005
ER16-5-UP	5~4	0.005
ER16-5.5-UP	5.5~4.5	0.005
ER16-6-UP	6~5	0.005
ER16-6.5-UP	6.5~5.5	0.005

ER16-UP

規格 Spec.	夾持範圍 Clamp Range	精度等級 Precision
ER16-7-UP	7~6	0.005
ER16-7.5-UP	7.5~6.5	0.005
ER16-8-UP	8~7	0.005
ER16-8.5-UP	8.5~7.5	0.005
ER16-9-UP	9~8	0.005
ER16-9.5-UP	9.5~8.5	0.005
ER16-10-UP	10~9	0.005

ER20-UP

規格 Spec.	夾持範圍 Clamp Range	精度等級 Precision
ER20-1-UP	1~0.5	0.005
ER20-1.5-UP	1.5~1	0.005
ER20-2-UP	2~1.5	0.005
ER20-2.5-UP	2.5~2	0.005
ER20-3-UP	3~2	0.005
ER20-3.5-UP	3.5~2.5	0.005
ER20-4-UP	4~3	0.005
ER20-4.5-UP	4.5~3.5	0.005
ER20-5-UP	5~4	0.005
ER20-5.5-UP	5.5~4.5	0.005
ER20-6-UP	6~5	0.005
ER20-6.5-UP	6.5~5.5	0.005
ER20-7-UP	7~6	0.005
ER20-7.5-UP	7.5~6.5	0.005
ER20-8-UP	8~7	0.005
ER20-8.5-UP	8.5~7.5	0.005
ER20-9-UP	9~8	0.005
ER20-9.5-UP	9.5~8.5	0.005
ER20-10-UP	10~9	0.005
ER20-10.5-UP	10.5~9.5	0.005
ER20-11-UP	11~10	0.005
ER20-11.5-UP	11.5~10.5	0.005
ER20-12-UP	12~11	0.005
ER20-12.5-UP	12.5~11.5	0.005
ER20-13-UP	13~12	0.005

ER25-UP

規格 Spec.	夾持範圍 Clamp Range	精度等級 Precision
ER25-2-UP	2~1.5	0.005
ER25-2.5-UP	2.5~2	0.005
ER25-3-UP	3~2	0.005
ER25-3.5-UP	3.5~2.5	0.005
ER25-4-UP	4~3	0.005
ER25-4.5-UP	4.5~3.5	0.005
ER25-5-UP	5~4	0.005
ER25-5.5-UP	5.5~4.5	0.005
ER25-6-UP	6~5	0.005
ER25-6.5-UP	6.5~5.5	0.005
ER25-7-UP	7~6	0.005
ER25-7.5-UP	7.5~6.5	0.005
ER25-8-UP	8~7	0.005
ER25-8.5-UP	8.5~7.5	0.005
ER25-9-UP	9~8	0.005
ER25-9.5-UP	9.5~8.5	0.005
ER25-10-UP	10~9	0.005
ER25-10.5-UP	10.5~9.5	0.005
ER25-11-UP	11~10	0.005
ER25-11.5-UP	11.5~10.5	0.005
ER25-12-UP	12~11	0.005
ER25-12.5-UP	12.5~11.5	0.005
ER25-13-UP	13~12	0.005
ER25-13.5-UP	13.5~12.5	0.005
ER25-14-UP	14~13	0.005
ER25-14.5-UP	14.5~13.5	0.005
ER25-15-UP	15~14	0.005
ER25-15.5-UP	15.5~14.5	0.005
ER25-16-UP	16~15	0.005

ER32-UP

規格 Spec.	夾持範圍 Clamp Range	精度等級 Precision
ER32-2-UP	2~1.5	0.005
ER32-2.5-UP	2.5~2	0.005
ER32-3-UP	3~2	0.005
ER32-3.5-UP	3.5~2.5	0.005
ER32-4-UP	4~3	0.005
ER32-4.5-UP	4.5~3.5	0.005
ER32-5-UP	5~4	0.005
ER32-5.5-UP	5.5~4.5	0.005
ER32-6-UP	6~5	0.005

• 長度單位 Unit of Length (mm)

精度 (UP 級) Accuracy : 0.005mm



ER32-UP

規格 Spec.	夾持範圍 Clamp Range	精度等級 Precision
ER32-6.5-UP	6.5~5.5	0.005
ER32-7-UP	7~6	0.005
ER32-7.5-UP	7.5~6.5	0.005
ER32-8-UP	8~7	0.005
ER32-8.5-UP	8.5~7.5	0.005
ER32-9-UP	9~8	0.005
ER32-9.5-UP	9.5~8.5	0.005
ER32-10-UP	10~9	0.005
ER32-10.5-UP	10.5~9.5	0.005
ER32-11-UP	11~10	0.005
ER32-11.5-UP	11.5~10.5	0.005
ER32-12-UP	12~11	0.005
ER32-12.5-UP	12.5~11.5	0.005
ER32-13-UP	13~12	0.005
ER32-13.5-UP	13.5~12.5	0.005
ER32-14-UP	14~13	0.005
ER32-14.5-UP	14.5~13.5	0.005
ER32-15-UP	15~14	0.005
ER32-15.5-UP	15.5~14.5	0.005
ER32-16-UP	16~15	0.005
ER32-16.5-UP	16.5~15.5	0.005
ER32-17-UP	17~16	0.005
ER32-17.5-UP	17.5~16.5	0.005
ER32-18-UP	18~17	0.005
ER32-18.5-UP	18.5~17.5	0.005
ER32-19-UP	19~18	0.005
ER32-19.5-UP	19.5~18.5	0.005
ER32-20-UP	20~19	0.005

ER40-UP

規格 Spec.	夾持範圍 Clamp Range	精度等級 Precision
ER40-3-UP	3~2	0.005
ER40-3.5-UP	3.5~2.5	0.005
ER40-4-UP	4~3	0.005
ER40-4.5-UP	4.5~3.5	0.005
ER40-5-UP	5~4	0.005
ER40-5.5-UP	5.5~4.5	0.005
ER40-6-UP	6~5	0.005
ER40-6.5-UP	6.5~5.5	0.005
ER40-7-UP	7~6	0.005
ER40-7.5-UP	7.5~6.5	0.005

ER40-UP

規格 Spec.	夾持範圍 Clamp Range	精度等級 Precision
ER40-8-UP	8~7	0.005
ER40-8.5-UP	8.5~7.5	0.005
ER40-9-UP	9~8	0.005
ER40-9.5-UP	9.5~8.5	0.005
ER40-10-UP	10~9	0.005
ER40-10.5-UP	10.5~9.5	0.005
ER40-11-UP	11~10	0.005
ER40-11.5-UP	11.5~10.5	0.005
ER40-12-UP	12~11	0.005
ER40-12.5-UP	12.5~11.5	0.005
ER40-13-UP	13~12	0.005
ER40-13.5-UP	13.5~12.5	0.005
ER40-14-UP	14~13	0.005
ER40-14.5-UP	14.5~13.5	0.005
ER40-15-UP	15~14	0.005
ER40-15.5-UP	15.5~14.5	0.005
ER40-16-UP	16~15	0.005
ER40-16.5-UP	16.5~15.5	0.005
ER40-17-UP	17~16	0.005
ER40-17.5-UP	17.5~16.5	0.005
ER40-18-UP	18~17	0.005
ER40-18.5-UP	18.5~17.5	0.005
ER40-19-UP	19~18	0.005
ER40-19.5-UP	19.5~18.5	0.005
ER40-20-UP	20~19	0.005
ER40-20.5-UP	20.5~19.5	0.005
ER40-21-UP	21~20	0.005
ER40-21.5-UP	21.5~20.5	0.005
ER40-22-UP	22~21	0.005
ER40-22.5-UP	22.5~21.5	0.005
ER40-23-UP	23~22	0.005
ER40-23.5-UP	23.5~22.5	0.005
ER40-24-UP	24~23	0.005
ER40-24.5-UP	24.5~23.5	0.005
ER40-25-UP	25~24	0.005
ER40-25.5-UP	25.5~24.5	0.005
ER40-26-UP	26~25	0.005

ER50-UP

規格 Spec.	夾持範圍 Clamp Range	精度等級 Precision
ER50-6-UP	6~5	0.005
ER50-7-UP	7~6	0.005
ER50-8-UP	8~7	0.005
ER50-9-UP	9~8	0.005
ER50-10-UP	10~9	0.005
ER50-11-UP	11~9	0.005
ER50-12-UP	12~10	0.005
ER50-13-UP	13~11	0.005
ER50-14-UP	14~12	0.005
ER50-15-UP	15~13	0.005
ER50-16-UP	16~14	0.005
ER50-17-UP	17~15	0.005
ER50-18-UP	18~16	0.005
ER50-19-UP	19~17	0.005
ER50-20-UP	20~18	0.005
ER50-21-UP	21~19	0.005
ER50-22-UP	22~20	0.005
ER50-23-UP	23~21	0.005
ER50-24-UP	24~22	0.005
ER50-25-UP	25~23	0.005
ER50-26-UP	26~24	0.005
ER50-27-UP	27~25	0.005
ER50-28-UP	28~26	0.005
ER50-29-UP	29~27	0.005
ER50-30-UP	30~28	0.005
ER50-31-UP	31~29	0.005
ER50-32-UP	32~30	0.005
ER50-33-UP	33~31	0.005
ER50-34-UP	34~32	0.005

ER8

規格 Spec.	夾持範圍 Clamp Range
ER8-1/16	0.043"~0.062"
ER8-1/8	0.086"~0.125"
ER8-3/16	0.148"~0.187"

ER11

規格 Spec.	夾持範圍 Clamp Range
ER11-1/16	0.043"~0.062"
ER11-3/32	0.054"~0.093"
ER11-1/8	0.086"~0.125"
ER11-5/32	0.117"~0.156"
ER11-3/16	0.148"~0.187"
ER11-7/32	0.179"~0.218"
ER11-1/4	0.211"~0.250"

ER16

規格 Spec.	夾持範圍 Clamp Range
ER16-1/16	0.043"~0.062"
ER16-3/32	0.054"~0.093"
ER16-1/8	0.086"~0.125"
ER16-5/32	0.117"~0.156"
ER16-3/16	0.148"~0.187"
ER16-7/32	0.179"~0.218"
ER16-1/4	0.211"~0.250"
ER16-9/32	0.242"~0.281"
ER16-5/16	0.283"~0.312"
ER16-11/32	0.304"~0.343"
ER16-3/8	0.336"~0.375"
ER16-13/32	0.367"~0.406"

ER20

規格 Spec.	夾持範圍 Clamp Range
ER20-1/16	0.043"~0.062"
ER20-3/32	0.054"~0.093"
ER20-1/8	0.086"~0.125"
ER20-5/32	0.117"~0.156"
ER20-3/16	0.148"~0.187"
ER20-7/32	0.179"~0.218"
ER20-1/4	0.211"~0.250"
ER20-9/32	0.242"~0.281"
ER20-5/16	0.283"~0.312"
ER20-11/32	0.304"~0.343"
ER20-3/8	0.336"~0.375"
ER20-13/32	0.367"~0.406"
ER20-7/16	0.398"~0.437"
ER20-15/32	0.429"~0.468"
ER20-1/2	0.461"~0.500"

ER25

規格 Spec.	夾持範圍 Clamp Range
ER25-3/32	0.054"~0.093"
ER25-1/8	0.086"~0.125"
ER25-5/32	0.117"~0.156"
ER25-3/16	0.148"~0.187"
ER25-7/32	0.179"~0.218"
ER25-1/4	0.211"~0.250"
ER25-9/32	0.242"~0.281"
ER25-5/16	0.283"~0.312"
ER25-11/32	0.304"~0.343"
ER25-3/8	0.336"~0.375"
ER25-13/32	0.367"~0.406"
ER25-7/16	0.398"~0.437"
ER25-15/32	0.429"~0.468"
ER25-1/2	0.461"~0.500"
ER25-17/32	0.492"~0.531"
ER25-9/16	0.523"~0.562"
ER25-19/32	0.554"~0.593"
ER25-5/8	0.586"~0.625"

ER32

規格 Spec.	夾持範圍 Clamp Range
ER32-1/16	0.043"~0.062"
ER32-3/32	0.054"~0.093"
ER32-1/8	0.086"~0.125"
ER32-5/32	0.117"~0.156"
ER32-3/16	0.148"~0.187"
ER32-7/32	0.179"~0.218"
ER32-1/4	0.211"~0.250"
ER32-9/32	0.242"~0.281"
ER32-5/16	0.283"~0.312"
ER32-11/32	0.304"~0.343"
ER32-3/8	0.336"~0.375"
ER32-13/32	0.367"~0.406"
ER32-7/16	0.398"~0.437"
ER32-15/32	0.429"~0.468"
ER32-1/2	0.461"~0.500"
ER32-17/32	0.492"~0.531"
ER32-9/16	0.523"~0.562"
ER32-19/32	0.554"~0.593"
ER32-5/8	0.586"~0.625"
ER32-21/32	0.617"~0.656"
ER32-11/16	0.648"~0.687"
ER32-23/32	0.679"~0.718"
ER32-3/4	0.711"~0.750"

ER40

規格 Spec.	夾持範圍 Clamp Range
ER40-1/8	0.086"~0.125"
ER40-5/32	0.117"~0.156"
ER40-3/16	0.148"~0.187"
ER40-7/32	0.179"~0.218"
ER40-1/4	0.211"~0.250"
ER40-9/32	0.242"~0.281"
ER40-5/16	0.283"~0.312"
ER40-11/32	0.304"~0.343"
ER40-3/8	0.336"~0.375"
ER40-13/32	0.367"~0.406"
ER40-7/16	0.398"~0.437"
ER40-15/32	0.429"~0.468"
ER40-1/2	0.461"~0.500"
ER40-17/32	0.492"~0.531"
ER40-9/16	0.523"~0.562"
ER40-19/32	0.554"~0.593"
ER40-5/8	0.586"~0.625"
ER40-21/32	0.617"~0.656"
ER40-11/16	0.648"~0.687"
ER40-23/32	0.679"~0.718"
ER40-3/4	0.711"~0.750"
ER40-7/8	0.836"~0.875"
ER40-1	0.961"~1.00"

ER50

規格 Spec.	夾持範圍 Clamp Range
ER50-7/23	0.179"~0.219"
ER50-1/4	0.211"~0.250"
ER50-5/16	0.273"~0.313"
ER50-11/32	0.304"~0.344"
ER50-3/8	0.336"~0.375"
ER50-7/16	0.359"~0.438"
ER50-17/32	0.453"~0.531"
ER50-5/8	0.546"~0.625"
ER50-11/16	0.609"~0.688"
ER50-25/32	0.703"~0.781"
ER50-27/32	0.765"~0.844"
ER50-15/16	0.859"~0.938"
ER50-1	0.921"~1.000"
ER50-1-3/32	1.015"~1.094"
ER50-1-3/16	1.109"~1.188"
ER50-1-1/4	1.171"~1.250"
ER50-1-5/16	1.234"~1.313"

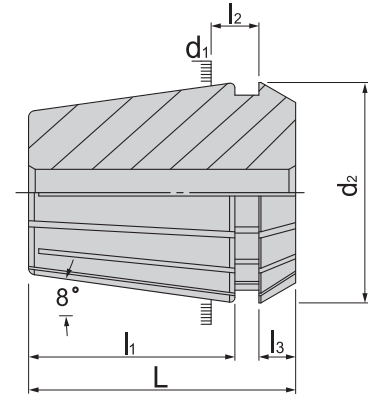
- 以上規格皆有普通級 0.02mm、A 級 0.01mm 及 UP 級 0.005mm 三種精度等級可選購，訂購時請告知所需精度等級。

- The above specifications individually ordinary grade 0.02mm, A grade 0.01mm and UP grade 0.005mm. Three kinds of precision grade optional, please inform us the required accuracy grade when ordering

• 長度單位 Unit of Length (mm)



範例 Exmpl



規格 Spec.	d1	d2	L	l1	l2	l3	尺寸範圍 Size Range
ER16	16	16.6	27.5	20.8	6.26	4	3~7mm
ER20	20	20.6	31.5	23.9	6.36	4.8	3~9mm
ER25	25	25.6	34	25.9	6.66	5	3~14mm
ER32	32	32.6	40	30.9	7.16	5.5	3~20mm
ER40	40	40.6	46	34.9	7.66	7	4~26mm

ER16-FID

規格 Spec.	夾持範圍 Clamp Range	重量 (KGS) Weight
FID-ER16-3	3	0.03
FID-ER16-4	4	0.03
FID-ER16-5	5	0.03
FID-ER16-6	6	0.03
FID-ER16-7	7	0.03

ER25-FID

規格 Spec.	夾持範圍 Clamp Range	重量 (KGS) Weight
FID-ER25-3	3	0.06
FID-ER25-4	4	0.06
FID-ER25-5	5	0.06
FID-ER25-6	6	0.06
FID-ER25-7	7	0.06
FID-ER25-8	8	0.06
FID-ER25-9	9	0.06
FID-ER25-10	10	0.06
FID-ER25-11	11	0.06
FID-ER25-12	12	0.06
FID-ER25-13	13	0.06
FID-ER25-14	14	0.06

ER20-FID

規格 Spec.	夾持範圍 Clamp Range	重量 (KGS) Weight
FID-ER20-3	3	0.04
FID-ER20-4	4	0.04
FID-ER20-5	5	0.04
FID-ER20-6	6	0.04
FID-ER20-7	7	0.04
FID-ER20-8	8	0.04
FID-ER20-9	9	0.04



ER-FID 出水筒夾

ER-FID COOLANT COLLET



ER32-FID

規格 Spec.	夾持範圍 Clamp Range	重量 (KGS) Weight
FID-ER32-3	3	0.10
FID-ER32-4	4	0.10
FID-ER32-5	5	0.10
FID-ER32-6	6	0.10
FID-ER32-7	7	0.10
FID-ER32-8	8	0.10
FID-ER32-9	9	0.10
FID-ER32-10	10	0.10
FID-ER32-11	11	0.10
FID-ER32-12	12	0.10
FID-ER32-13	13	0.10
FID-ER32-14	14	0.10
FID-ER32-15	15	0.10
FID-ER32-16	16	0.10
FID-ER32-17	17	0.10
FID-ER32-18	18	0.10
FID-ER32-19	19	0.10
FID-ER32-20	20	0.10

ER40-FID

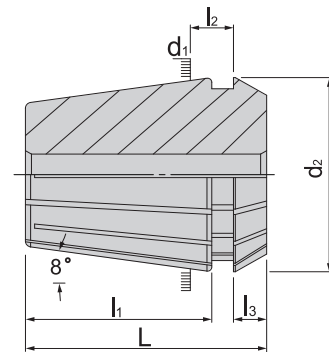
規格 Spec.	夾持範圍 Clamp Range	重量 (KGS) Weight
FID-ER40-4	4	0.25
FID-ER40-5	5	0.25
FID-ER40-6	6	0.25
FID-ER40-7	7	0.25
FID-ER40-8	8	0.25
FID-ER40-9	9	0.25
FID-ER40-10	10	0.25
FID-ER40-11	11	0.25
FID-ER40-12	12	0.25
FID-ER40-13	13	0.25
FID-ER40-14	14	0.25
FID-ER40-15	15	0.25
FID-ER40-16	16	0.25
FID-ER40-17	17	0.25
FID-ER40-18	18	0.25
FID-ER40-19	19	0.25
FID-ER40-20	20	0.25
FID-ER40-21	21	0.25
FID-ER40-22	22	0.25
FID-ER40-23	23	0.25
FID-ER40-24	24	0.25
FID-ER40-25	25	0.25
FID-ER40-26	26	0.25



ER-FOD 出水筒夾

ER-FOD COOLANT COLLET

範例 Exmpl



規格 Spec.	d1	d2	L	l1	l2	l3	尺寸範圍 Size Range
ER16	16	16.6	27.5	20.8	6.26	4	3~7mm
ER20	20	20.6	31.5	23.9	6.36	4.8	3~9mm
ER25	25	25.6	34	25.9	6.66	5	3~14mm
ER32	32	32.6	40	30.9	7.16	5.5	3~20mm
ER40	40	40.6	46	34.9	7.66	7	4~26mm
ER50	50	52	60	46	13.4	8.5	6~20mm

• 長度單位 Unit of Length (mm)

ACCESSORIES

ER16-FOD

規格 Spec.	夾持範圍 Clamp Range	重量 (KGS) Weight
FOD-ER16-3	3	0.03
FOD-ER16-4	4	0.03
FOD-ER16-5	5	0.03
FOD-ER16-6	6	0.03
FOD-ER16-7	7	0.03

ER20-FOD

規格 Spec.	夾持範圍 Clamp Range	重量 (KGS) Weight
FOD-ER20-3	3	0.04
FOD-ER20-4	4	0.04
FOD-ER20-5	5	0.04
FOD-ER20-6	6	0.04
FOD-ER20-7	7	0.04
FOD-ER20-8	8	0.04
FOD-ER20-9	9	0.04

ER25-FOD

規格 Spec.	夾持範圍 Clamp Range	重量 (KGS) Weight
FOD-ER25-3	3	0.06
FOD-ER25-4	4	0.06
FOD-ER25-5	5	0.06
FOD-ER25-6	6	0.06
FOD-ER25-7	7	0.06
FOD-ER25-8	8	0.06
FOD-ER25-9	9	0.06
FOD-ER25-10	10	0.06
FOD-ER25-11	11	0.06
FOD-ER25-12	12	0.06
FOD-ER25-13	13	0.06
FOD-ER25-14	14	0.06

ER32-FOD

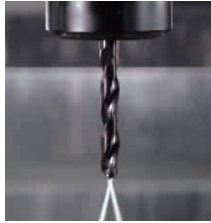
規格 Spec.	夾持範圍 Clamp Range	重量 (KGS) Weight
FOD-ER32-3	3	0.10
FOD-ER32-4	4	0.10
FOD-ER32-5	5	0.10
FOD-ER32-6	6	0.10
FOD-ER32-7	7	0.10
FOD-ER32-8	8	0.10
FOD-ER32-9	9	0.10
FOD-ER32-10	10	0.10
FOD-ER32-11	11	0.10
FOD-ER32-12	12	0.10
FOD-ER32-13	13	0.10
FOD-ER32-14	14	0.10
FOD-ER32-15	15	0.10
FOD-ER32-16	16	0.10
FOD-ER32-17	17	0.10
FOD-ER32-18	18	0.10
FOD-ER32-19	19	0.10
FOD-ER32-20	20	0.10

ER40-FOD

規格 Spec.	夾持範圍 Clamp Range	重量 (KGS) Weight
FOD-ER40-4	4	0.25
FOD-ER40-5	5	0.25
FOD-ER40-6	6	0.25
FOD-ER40-7	7	0.25
FOD-ER40-8	8	0.25
FOD-ER40-9	9	0.25
FOD-ER40-10	10	0.25
FOD-ER40-11	11	0.25
FOD-ER40-12	12	0.25
FOD-ER40-13	13	0.25
FOD-ER40-14	14	0.25
FOD-ER40-15	15	0.25
FOD-ER40-16	16	0.25
FOD-ER40-17	17	0.25
FOD-ER40-18	18	0.25
FOD-ER40-19	19	0.25
FOD-ER40-20	20	0.25
FOD-ER40-21	21	0.25
FOD-ER40-22	22	0.25
FOD-ER40-23	23	0.25
FOD-ER40-24	24	0.25
FOD-ER40-25	25	0.25
FOD-ER40-26	26	0.25

ER50-FOD

規格 Spec.	夾持範圍 Size Range	重量 (KGS) Weight
FOD-ER50-6	6	0.45
FOD-ER50-7	7	0.45
FOD-ER50-8	8	0.45
FOD-ER50-9	9	0.45
FOD-ER50-10	10	0.45
FOD-ER50-11	11	0.45
FOD-ER50-12	12	0.45
FOD-ER50-13	13	0.45
FOD-ER50-14	14	0.45
FOD-ER50-15	15	0.45
FOD-ER50-16	16	0.45
FOD-ER50-17	17	0.45
FOD-ER50-18	18	0.45
FOD-ER50-19	19	0.45
FOD-ER50-20	20	0.45
FOD-ER50-21	21	0.45
FOD-ER50-22	22	0.45
FOD-ER50-23	23	0.45
FOD-ER50-24	24	0.45
FOD-ER50-25	25	0.45
FOD-ER50-26	26	0.45
FOD-ER50-27	27	0.45
FOD-ER50-28	28	0.45
FOD-ER50-29	29	0.45
FOD-ER50-30	30	0.45
FOD-ER50-31	31	0.45
FOD-ER50-32	32	0.45
FOD-ER50-33	33	0.45
FOD-ER50-34	34	0.45



ERS11

規格 Spec.	夾持範圍 Clamp Range	重量 (KGS) Weight
ERS11-3	3	0.03
ERS11-3.5	3.5	0.03
ERS11-4	4	0.03
ERS11-4.5	4.5	0.03
ERS11-5	5	0.03
ERS11-5.5	5.5	0.03
ERS11-6	6	0.03
ERS11-6.5	6.5	0.03
ERS11-7	7	0.03

ERS16

規格 Spec.	夾持範圍 Clamp Range	重量 (KGS) Weight
ERS16-3	3	0.03
ERS16-3.5	3.5	0.03
ERS16-4	4	0.03
ERS16-4.5	4.5	0.03
ERS16-5	5	0.03
ERS16-5.5	5.5	0.03
ERS16-6	6	0.03
ERS16-6.5	6.5	0.03
ERS16-7	7	0.03
ERS16-7.5	7.5	0.03
ERS16-8	8	0.03
ERS16-8.5	8.5	0.03
ERS16-9	9	0.03
ERS16-9.5	9.5	0.03
ERS16-10	10	0.03

ERS20

規格 Spec.	夾持範圍 Clamp Range	重量 (KGS) Weight
ERS20-3	3	0.03
ERS20-3.5	3.5	0.03
ERS20-4	4	0.03
ERS20-4.5	4.5	0.03
ERS20-5	5	0.03
ERS20-5.5	5.5	0.03
ERS20-6	6	0.03
ERS20-6.5	6.5	0.03
ERS20-7	7	0.03
ERS20-7.5	7.5	0.03
ERS20-8	8	0.03
ERS20-8.5	8.5	0.03
ERS20-9	9	0.03
ERS20-9.5	9.5	0.03
ERS20-10	10	0.03
ERS20-10.5	10.5	0.03
ERS20-11	11	0.03
ERS20-11.5	11.5	0.03
ERS20-12	12	0.03
ERS20-12.5	12.5	0.03
ERS20-13	13	0.03

ERS25

規格 Spec.	夾持範圍 Clamp Range	重量 (KGS) Weight
ERS25-3	3	0.03
ERS25-3.5	3.5	0.03
ERS25-4	4	0.03
ERS25-4.5	4.5	0.03
ERS25-5	5	0.03
ERS25-5.5	5.5	0.03
ERS25-6	6	0.03
ERS25-6.5	6.5	0.03
ERS25-7	7	0.03
ERS25-7.5	7.5	0.03
ERS25-8	8	0.03
ERS25-8.5	8.5	0.03
ERS25-9	9	0.03
ERS25-9.5	9.5	0.03
ERS25-10	10	0.03
ERS25-10.5	10.5	0.03
ERS25-11	11	0.03
ERS25-11.5	11.5	0.03
ERS25-12	12	0.03
ERS25-12.5	12.5	0.03
ERS25-13	13	0.03
ERS25-13.5	13.5	0.03
ERS25-14	14	0.03
ERS25-14.5	14.5	0.03
ERS25-15	15	0.03
ERS25-15.5	15.5	0.03
ERS25-16	16	0.03

ERS32

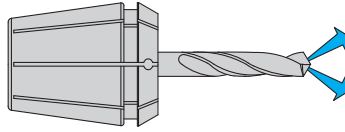
規格 Spec.	夾持範圍 Clamp Range	重量 (KGS) Weight
ERS32-3	3	0.03
ERS32-3.5	3.5	0.03
ERS32-4	4	0.03
ERS32-4.5	4.5	0.03
ERS32-5	5	0.03
ERS32-5.5	5.5	0.03
ERS32-6	6	0.03
ERS32-6.5	6.5	0.03
ERS32-7	7	0.03
ERS32-7.5	7.5	0.03
ERS32-8	8	0.03
ERS32-8.5	8.5	0.03
ERS32-9	9	0.03
ERS32-9.5	9.5	0.03
ERS32-10	10	0.03
ERS32-10.5	10.5	0.03
ERS32-11	11	0.03
ERS32-11.5	11.5	0.03
ERS32-12	12	0.03
ERS32-12.5	12.5	0.03
ERS32-13	13	0.03
ERS32-13.5	13.5	0.03
ERS32-14	14	0.03
ERS32-14.5	14.5	0.03

ERS32

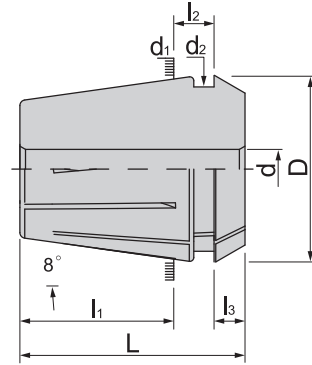
規格 Spec.	夾持範圍 Clamp Range	重量 (KGS) Weight
ERS32-15	15	0.03
ERS32-15.5	15.5	0.03
ERS32-16	16	0.03
ERS32-16.5	16.5	0.03
ERS32-17	17	0.03
ERS32-17.5	17.5	0.03
ERS32-18	18	0.03
ERS32-18.5	18.5	0.03
ERS32-19	19	0.03
ERS32-19.5	19.5	0.03
ERS32-20	20	0.03

ERS40

規格 Spec.	夾持範圍 Clamp Range	重量 (KGS) Weight
ERS40-3	3	0.03
ERS40-3.5	3.5	0.03
ERS40-4	4	0.03
ERS40-4.5	4.5	0.03
ERS40-5	5	0.03
ERS40-5.5	5.5	0.03
ERS40-6	6	0.03
ERS40-6.5	6.5	0.03
ERS40-7	7	0.03
ERS40-7.5	7.5	0.03
ERS40-8	8	0.03
ERS40-8.5	8.5	0.03
ERS40-9	9	0.03
ERS40-9.5	9.5	0.03
ERS40-10	10	0.03
ERS40-10.5	10.5	0.03
ERS40-11	11	0.03
ERS40-11.5	11.5	0.03
ERS40-12	12	0.03
ERS40-12.5	12.5	0.03
ERS40-13	13	0.03
ERS40-13.5	13.5	0.03
ERS40-14	14	0.03
ERS40-14.5	14.5	0.03
ERS40-15	15	0.03
ERS40-15.5	15.5	0.03
ERS40-16	16	0.03
ERS40-16.5	16.5	0.03
ERS40-17	17	0.03
ERS40-17.5	17.5	0.03
ERS40-18	18	0.03
ERS40-18.5	18.5	0.03
ERS40-19	19	0.03
ERS40-19.5	19.5	0.03
ERS40-20	20	0.03
ERS40-20.5	20.5	0.03
ERS40-21	21	0.03
ERS40-21.5	21.5	0.03
ERS40-22	22	0.03
ERS40-22.5	22.5	0.03
ERS40-23	23	0.03
ERS40-23.5	23.5	0.03
ERS40-24	24	0.03
ERS40-24.5	24.5	0.03
ERS40-25	25	0.03
ERS40-25.5	25.5	0.03
ERS40-26	26	0.03



夾持附水孔刀具專用



- 材質 :SUJ-2
- 斜度 :8°
- 硬度 :HRC46°
- 表面粗糙度 RZ2.5 以內
- 偏擺精度 <0.02mm

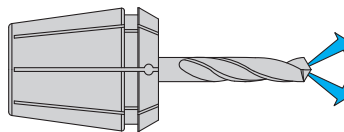
- Steel:SUJ - 2
- Taper:8°
- Hardness: HRC46°
- Surface Roughness:RZ 2.5
- Precision : within 0.02mm.

特點 Feature

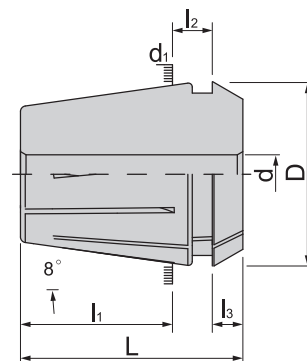
- 利用溝槽的差異，以及墊圈 (Sealed ring 封環) 的應用，達到周圍止水，僅中心出水的功用
- 適合於夾持出水孔的刀具
- 可承受水壓達 21kgf/cm²
- 無彈性 (沒有彈性夾持範圍，需看最大夾持範圍)
- 非標準孔徑如英制尺寸或是點數規格可接受訂製
- 專利在案

- Take use of the difference of groove and then use of sealed ring to attain surrounding coolant and provide center as water outlet.
- Suitable for chuck cutting tools with water exit.
- Can bear the water pressure up to 21kgf/cm².
- No flexibility (NO flexible chucking range. It depends on the biggest chucking range).
- Non-standard type, such as inch type or decimal type, are welcomed to order.
- Has a patent.

規格 Spec.	d 尺寸範圍 Size Range	d ₁	d ₂	L	l ₁	l ₂	l ₃
ER11EO-d	3~7mm	11	11.2	18	13.5	3.8	2.5
ER16EO-d	3~10mm	16	16.6	27.5	20.8	6.26	4
ER20EO-d	3~13mm	20	20.6	31.5	23.9	6.36	4.8
ER25EO-d	3~16mm	25	25.6	34	25.9	6.66	5
ER32EO-d	3~20mm	32	32.6	40	30.9	7.16	5.5
ER40EO-d	3~26mm	40	40.6	46	34.9	7.66	7



夾持附水孔刀具專用



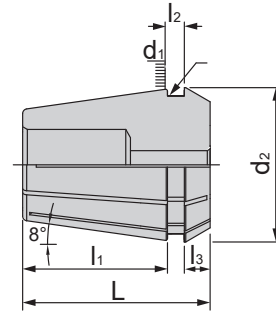
規格 Spec.	d 尺寸範圍 Size Range	L	l ₁	l ₂	l ₃	D	d ₁
ER11ES-d	3~7mm	18	13.5	3.8	2.5	11.2	11
ER16ES-d	0.5~10mm	27.5	20.8	6.25	4	16.6	16
ER20ES-d	1~13mm	31.5	23.9	6.36	4.8	20.6	20
ER25ES-d	1~16mm	34	25.9	6.66	5	25.6	25
ER32ES-d	2~20mm	40	30.9	7.16	5.5	32.6	32
ER40ES-d	3~26mm	46	34.9	7.66	7	40.6	40

• 長度單位 Unit of Length (mm)



PN 筒夾 PN COLLET

精度 Accuracy: <math><3\mu\text{m}</math>



規格 Spec.	L	l ₁	l ₂	l ₃	d ₁	d ₂	夾持範圍 Size Range	重量 (KGS) Weight
PN16	27.5	20.8	3.4	4	16	16.8	3.0~10	0.03
PN20	31.5	23.9	3.4	4.8	20	20.8	3.0~13	0.04
PN25	34	25.9	3.6	5	25	25.8	3.0~16	0.06
PN32	40	30.9	4.1	5.5	32	32.7	3.0~20	0.10
PN40	46	34.5	4.5	7	40	40.85	6.0~26	0.25

PN16

規格 Spec.	夾持範圍 Size Range
PN16-03	3
PN16-04	4
PN16-05	5
PN16-06	6
PN16-07	7
PN16-08	8
PN16-09	9
PN16-10	10

PN20

規格 Spec.	夾持範圍 Size Range
PN20-03	3
PN20-04	4
PN20-05	5
PN20-06	6
PN20-07	7
PN20-08	8
PN20-09	9
PN20-10	10
PN20-11	11
PN20-12	12
PN20-13	13

PN25

規格 Spec.	夾持範圍 Size Range
PN25-03	3
PN25-04	4
PN25-05	5
PN25-06	6
PN25-07	7
PN25-08	8
PN25-09	9
PN25-10	10
PN25-11	11
PN25-12	12
PN25-13	13
PN25-14	14
PN25-15	15
PN25-16	16

PN32

規格 Spec.	夾持範圍 Size Range
PN32-03	3
PN32-04	4
PN32-05	5
PN32-06	6
PN32-07	7
PN32-08	8
PN32-09	9
PN32-10	10
PN32-11	11
PN32-12	12
PN32-13	13
PN32-14	14
PN32-15	15
PN32-16	16
PN32-17	17
PN32-18	18
PN32-19	19
PN32-20	20

PN40

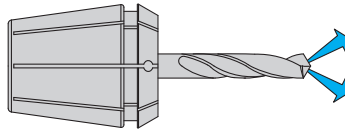
規格 Spec.	夾持範圍 Size Range	規格 Spec.	夾持範圍 Size Range
PN40-06	6	PN40-21	21
PN40-07	7	PN40-22	22
PN40-08	8	PN40-23	23
PN40-09	9	PN40-24	24
PN40-10	10	PN40-25	25
PN40-11	11	PN40-26	26
PN40-12	12		
PN40-13	13		
PN40-14	14		
PN40-15	15		
PN40-16	16		
PN40-17	17		
PN40-18	18		
PN40-19	19		
PN40-20	20		

- 另有英制規格可選購 Another Inch specifications purchase optional.

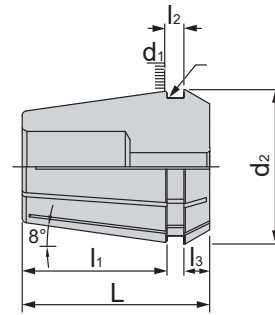
• 長度單位 Unit of Length (mm)

ACCESSORIES

精度 Accuracy : <math><3\mu\text{m}</math>



夾持附水孔刀具專用



規格 Spec.	L	l ₁	l ₂	l ₃	d ₁	d ₂	夾持範圍 Size Range	重量 (KGS) Weight
PN16ES	27.5	20.8	3.4	4	16	16.8	3.0~10	0.03
PN20ES	31.5	23.9	3.4	4.8	20	20.8	3.0~13	0.04
PN25ES	34	25.9	3.6	5	25	25.8	3.0~16	0.06
PN32ES	40	30.9	4.1	5.5	32	32.7	3.0~20	0.10
PN40ES	46	34.5	4.5	7	40	40.85	6.0~26	0.25

PN16ES

規格 Spec.	夾持範圍 Size Range
PN16ES-03	3
PN16ES-04	4
PN16ES-05	5
PN16ES-06	6
PN16ES-07	7
PN16ES-08	8
PN16ES-09	9
PN16ES-10	10

PN20ES

規格 Spec.	夾持範圍 Size Range
PN20ES-03	3
PN20ES-04	4
PN20ES-05	5
PN20ES-06	6
PN20ES-07	7
PN20ES-08	8
PN20ES-09	9
PN20ES-10	10
PN20ES-11	11
PN20ES-12	12
PN20ES-13	13

PN25ES

規格 Spec.	夾持範圍 Size Range
PN25ES-03	3
PN25ES-04	4
PN25ES-05	5
PN25ES-06	6
PN25ES-07	7
PN25ES-08	8
PN25ES-09	9
PN25ES-10	10
PN25ES-11	11
PN25ES-12	12
PN25ES-13	13
PN25ES-14	14
PN25ES-15	15
PN25ES-16	16

PN32ES

規格 Spec.	夾持範圍 Size Range
PN32ES-03	3
PN32ES-04	4
PN32ES-05	5
PN32ES-06	6
PN32ES-07	7
PN32ES-08	8
PN32ES-09	9
PN32ES-10	10
PN32ES-11	11
PN32ES-12	12
PN32ES-13	13
PN32ES-14	14
PN32ES-15	15
PN32ES-16	16
PN32ES-17	17
PN32ES-18	18
PN32ES-19	19
PN32ES-20	20

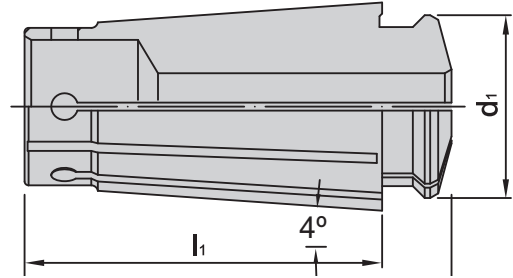
PN40ES

規格 Spec.	夾持範圍 Size Range	規格 Spec.	夾持範圍 Size Range
PN40ES-06	6	PN40ES-21	21
PN40ES-07	7	PN40ES-22	22
PN40ES-08	8	PN40ES-23	23
PN40ES-09	9	PN40ES-24	24
PN40ES-10	10	PN40ES-25	25
PN40ES-11	11	PN40ES-26	26
PN40ES-12	12		
PN40ES-13	13		
PN40ES-14	14		
PN40ES-15	15		
PN40ES-16	16		
PN40ES-17	17		
PN40ES-18	18		
PN40ES-19	19		
PN40ES-20	20		

- 另有英制規格可選購 Another Inch specifications purchase optional.

• 長度單位 Unit of Length (mm)

精度 Accuracy : 5 μ m



特點 Feature

- 偏擺精度 :5 μ 以下 (延伸 4D 長度處)
- 可夾持鑽頭、銑刀、鉸刀
- 所夾持刀具柄徑公差限定 h7 以內
- 孔徑 3mm 以下彈性收縮 0.25mm
- 孔徑 3mm 以上彈性收縮 0.5mm

- Precision:5 μ (4D length)
- Applicable for clamping drills, mills, and reamers.
- Holding tool with a tolerance within h7.
- When the aperture is under 3mm, the clamping capacity is 0.25mm.
- When the aperture is above 3mm, the clamping capacity is 0.5mm.

規格 Spec.	L	l ₁	d ₁	重量 (KGS) Weight
SKS-6	25.7	21.4	9.26	0.03
SKS-10	32	26.8	13.6	0.04
SKS-13	39.1	33.6	17	0.04
SKS-16	46	40	21	0.06
SKS-20	54.3	49	24.9	0.14
SKS-25	58.2	51.5	31	1.00

SKS6-UP

規格 Spec.	夾持範圍 Range d ₁	重量 (KGS) Weight
SKS6-3-UP	2.75~3.0	0.01
SKS6-3.5-UP	3.0~3.5	0.01
SKS6-4-UP	3.5~4.0	0.01
SKS6-4.5-UP	4.0~4.5	0.01
SKS6-5-UP	4.5~5.0	0.01
SKS6-5.5-UP	5.0~5.5	0.01
SKS6-6-UP	5.5~6.0	0.01

SKS10-UP

規格 Spec.	夾持範圍 Range d ₁	重量 (KGS) Weight
SKS10-2-UP	2.0~1.75	0.02
SKS10-2.5-UP	2.5~2.25	0.02
SKS10-3UP	3.0~2.75	0.02
SKS10-3.5-UP	3.5~3.0	0.02
SKS10-4-UP	4.0~3.5	0.02
SKS10-4.5-UP	4.5~4.0	0.02
SKS10-5-UP	5.0~4.5	0.02
SKS10-5.5UP	5.5~5.0	0.02
SKS10-6-UP	6.0~5.5	0.02
SKS10-6.5-UP	6.5~6.0	0.02
SKS10-7-UP	7.0~6.5	0.02
SKS10-7.5-UP	7.5~7.0	0.02
SKS10-8UP	8.0~7.5	0.02
SKS10-8.5-UP	8.5~8.0	0.02
SKS10-9-UP	9.0~8.5	0.02
SKS10-9.5-UP	9.5~9.0	0.01
SKS10-10-UP	10.0~9.5	0.01

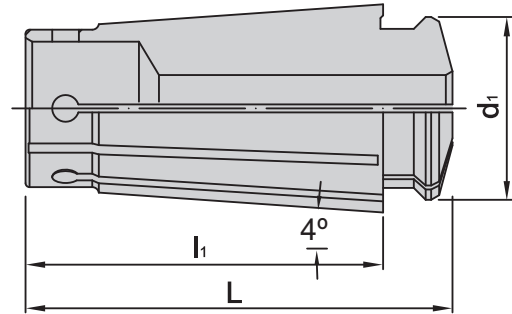
SKS13-UP

規格 Spec.	夾持範圍 Range d ₁	重量 (KGS) Weight
SKS13-3-UP	2.75~3.0	0.05
SKS13-3.5-UP	3.0~3.5	0.05
SKS13-4-UP	3.5~4.0	0.05
SKS13-4.5-UP	4.0~4.5	0.05
SKS13-5-UP	4.5~5.0	0.05
SKS13-5.5-UP	5.0~5.5	0.05
SKS13-6-UP	5.5~6.0	0.05
SKS13-6.5-UP	6.0~6.5	0.05
SKS13-7-UP	6.5~7.0	0.05
SKS13-7.5-UP	7.0~7.5	0.05
SKS13-8-UP	7.5~8.0	0.05
SKS13-8.5-UP	8.0~8.5	0.05
SKS13-9-UP	8.5~9.0	0.04
SKS13-9.5-UP	9.0~9.5	0.04
SKS13-10-UP	9.5~10.0	0.04
SKS13-10.5-UP	10.0~10.5	0.04
SKS13-11-UP	10.5~11.0	0.04
SKS13-11.5-UP	11.0~11.5	0.04
SKS13-12-UP	11.5~12.0	0.03
SKS13-12.5-UP	12.0~12.5	0.03
SKS13-13-UP	12.5~13.0	0.03



• 長度單位 Unit of Length (mm)

精度 Accuracy : 5 μ m



特點 Feature

- 偏擺精度 : 5 μ 以下 (延伸 4D 長度處)
- 可夾持鑽頭、銑刀、鉸刀
- 所夾持刀具柄徑公差限定 h7 以內
- 孔徑 3mm 以下彈性收縮 0.25mm
- 孔徑 3mm 以上彈性收縮 0.5mm

- Precision: 5 μ (4D length)
- Applicable for clamping drills, mills, and reamers.
- Clamping tool with a tolerance within h7.
- When the aperture is under 3mm, the clamping capacity is 0.25mm.
- When the aperture is above 3mm, the clamping capacity is 0.5mm.

SKS16-UP

規格 Spec.	夾持範圍 Range d ₁	重量 (KGS) Weight
SKS16-3-UP	2.75~3.0	0.09
SKS16-3.5-UP	3.0~3.5	0.08
SKS16-4-UP	3.5~4.0	0.09
SKS16-4.5-UP	4.0~4.5	0.09
SKS16-5-UP	4.5~5.0	0.09
SKS16-5.5-UP	5.0~5.5	0.09
SKS16-6-UP	5.5~6.0	0.09
SKS16-6.5-UP	6.0~6.5	0.09
SKS16-7-UP	6.5~7.0	0.09
SKS16-7.5-UP	7.0~7.5	0.09
SKS16-8-UP	7.5~8.0	0.09
SKS16-8.5-UP	8.0~8.5	0.09
SKS16-9-UP	8.5~9.0	0.09
SKS16-9.5-UP	9.0~9.5	0.08
SKS16-10-UP	9.5~10.0	0.09
SKS16-10.5-UP	10.0~10.5	0.08
SKS16-11-UP	10.5~11.0	0.08
SKS16-11.5-UP	11.0~11.5	0.08
SKS16-12-UP	11.5~12.0	0.08
SKS16-12.5-UP	12.0~12.5	0.07
SKS16-13-UP	12.5~13.0	0.07
SKS16-13.5-UP	13.0~13.5	0.07
SKS16-14-UP	13.5~14.0	0.07
SKS16-14.5-UP	14.0~14.5	0.06
SKS16-15-UP	14.5~15.0	0.06
SKS16-15.5-UP	15.0~15.5	0.06
SKS16-16-UP	15.5~16.0	0.06

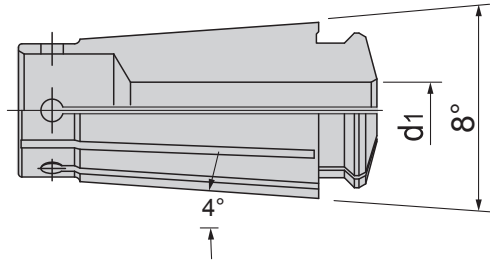
SKS20-UP

規格 Spec.	夾持範圍 Range d ₁	重量 (KGS) Weight
SKS20-3-UP	3.0~2.75	0.14
SKS20-3.5-UP	3.5~3.0	0.14
SKS20-4-UP	3.5~4.0	0.14
SKS20-4.5-UP	4.0~4.5	0.14
SKS20-5-UP	4.5~5.0	0.14
SKS20-5.5-UP	5.0~5.5	0.14
SKS20-6-UP	5.5~6.0	0.15
SKS20-6.5-UP	6.0~6.5	0.15
SKS20-7-UP	6.5~7.0	0.14
SKS20-7.5-UP	7.0~7.5	0.14
SKS20-8-UP	7.5~8.0	0.15
SKS20-8.5-UP	8.0~8.5	0.15
SKS20-9-UP	8.5~9.0	0.15
SKS20-9.5-UP	9.0~9.5	0.14
SKS20-10-UP	9.5~10.0	0.15
SKS20-10.5-UP	10.0~10.5	0.14
SKS20-11-UP	10.5~11.0	0.14
SKS20-11.5-UP	11.0~11.5	0.14
SKS20-12-UP	11.5~12.0	0.14
SKS20-12.5-UP	12.0~12.5	0.14
SKS20-13-UP	12.5~13.0	0.14
SKS20-13.5-UP	13.0~13.5	0.13
SKS20-14-UP	13.5~14.0	0.13
SKS20-14.5-UP	14.0~14.5	0.13
SKS20-15-UP	14.5~15.0	0.13
SKS20-15.5-UP	15.0~15.5	0.12
SKS20-16-UP	15.5~16.0	0.13
SKS20-16.5-UP	16.0~16.5	0.11
SKS20-17-UP	16.5~17.0	0.11
SKS20-17.5-UP	17.0~17.5	0.11
SKS20-18-UP	17.5~18.0	0.10
SKS20-18.5-UP	18.0~18.5	0.10
SKS20-19-UP	18.5~19.0	0.09
SKS20-19.5-UP	19.0~19.5	0.09
SKS20-20-UP	19.5~20.0	0.08

SKS25-UP

規格 Spec.	夾持範圍 Range d ₁	重量 (KGS) Weight
SKS25-3-UP	2.75~3	0.25
SKS25-4-UP	3.5~4	0.25
SKS25-6-UP	5.5~6	0.25
SKS25-8-UP	7.5~8	0.25
SKS25-10-UP	9.5~10	0.24
SKS25-12-UP	11.5~12	0.24
SKS25-16-UP	15.5~16	0.22
SKS25-16.5-UP	16~16.5	0.22
SKS25-17-UP	16.5~17	0.21
SKS25-17.5-UP	17~17.5	0.20
SKS25-18-UP	17.5~18	0.20
SKS25-18.5-UP	18~18.5	0.20
SKS25-19-UP	18.5~19	0.19
SKS25-19.5-UP	19~19.5	0.19
SKS25-20-UP	19.5~20	0.19
SKS25-20.5-UP	20~20.5	0.18
SKS25-21-UP	20.5~21	0.17
SKS25-21.5-UP	21~21.5	0.17
SKS25-22-UP	21.5~22	0.17
SKS25-22.5-UP	22~22.5	0.16
SKS25-23-UP	22.5~23	0.15
SKS25-23.5-UP	23~23.5	0.20
SKS25-24-UP	23.5~24	0.14
SKS25-24.5-UP	24~24.5	0.14
SKS25-25-UP	24.5~25	0.13
SKS25-25.4-UP	25~25.4	0.13





特點 Feature

- 偏擺精度 :5 μ 以下 (延伸 4D 長度處)
- 可夾持鑽頭、銑刀、鉸刀
- 夾持同柄徑刀具專用
- 不具彈性收縮範圍
- 夾持力較 UP 型大
- 所夾持刀具柄徑公差限定 h7 以內

- Precision:5 μ (4D length)
- Used for clamping drills, mills, and reamers.
- Used for clamping tools of the same diameter.
- It is not flexible.
- Clamping power is greater than the UP series.
- Holds tool with the diameter difference under h7.

SKS6-E

規格 Spec.	夾持範圍 Range d ₁	重量 (KGS) Weight
SKS6E-1	1	0.01
SKS6E-2	2	0.01
SKS6E-3	3	0.01
SKS6E-4	4	0.01
SKS6E-6	6	0.01

SKS10-E

規格 Spec.	夾持範圍 Range d ₁	重量 (KGS) Weight
SKS10E-3	3	0.02
SKS10E-4	4	0.02
SKS10E-5	5	0.02
SKS10E-6	6	0.02
SKS10E-8	8	0.02
SKS10E-10	10	0.01

SKS13-E

規格 Spec.	夾持範圍 Range d ₁	重量 (KGS) Weight
SKS13E-3	3	0.05
SKS13E-4	4	0.05
SKS13E-5	5	0.05
SKS13E-6	6	0.05
SKS13E-8	8	0.05
SKS13E-10	10	0.04
SKS13E-12	12	0.03
SKS13E-13	13	0.04

SKS16-E

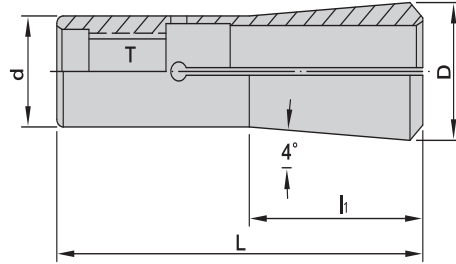
規格 Spec.	夾持範圍 Range d ₁	重量 (KGS) Weight
SKS16E-3	3	0.01
SKS16E-4	4	0.01
SKS16E-5	5	0.01
SKS16E-6	6	0.09
SKS16E-8	8	0.09
SKS16E-10	10	0.09
SKS16E-12	12	0.08
SKS16E-16	16	0.06

SKS20-E

規格 Spec.	夾持範圍 Range d ₁	重量 (KGS) Weight
SKS20E-3	3	0.15
SKS20E-4	4	0.14
SKS20E-5	5	0.14
SKS20E-6	6	0.14
SKS20E-7	7	0.15
SKS20E-8	8	0.15
SKS20E-9	9	0.15
SKS20E-10	10	0.15
SKS20E-11	11	0.15
SKS20E-12	12	0.15
SKS20E-13	13	0.14
SKS20E-14	14	0.14
SKS20E-15	15	0.12
SKS20E-16	16	0.12
SKS20E-17	17	0.12
SKS20E-18	18	0.10
SKS20E-19	19	0.10
SKS20E-20	20	0.10



SLC 專用筒夾 SLC COLLET



規格 Spec.	L	l ₁	d	重量 (KGS) Weight
SLC-6	36	24	8	0.02
SLC-12	57	25.45	14.5	0.04
SLC-20	70	35	21	0.12

SLC-6

規格 Spec.	夾持範圍 Range d ₁	重量 (KGS) Weight
SLC-6-2	2.0	0.02
SLC-6-2.25	2.25	0.02
SLC-6-2.5	2.5	0.02
SLC-6-2.75	2.75	0.02
SLC-6-3	3.0	0.02
SLC-6-3.25	3.25	0.02
SLC-6-3.5	3.5	0.02
SLC-6-3.75	3.75	0.02
SLC-6-4	4.0	0.01
SLC-6-4.25	4.25	0.02
SLC-6-4.5	4.5	0.02
SLC-6-4.75	4.75	0.02
SLC-6-5	5.0	0.02
SLC-6-5.25	5.25	0.01
SLC-6-5.5	5.5	0.02
SLC-6-5.75	5.75	0.02
SLC-6-6	6.0	0.02

SLC-12

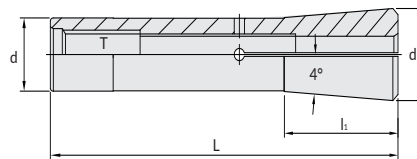
規格 Spec.	夾持範圍 Range d ₁	重量 (KGS) Weight
SLC-12-3	3.0	0.06
SLC-12-4	4.0	0.18
SLC-12-5	5.0	0.18
SLC-12-6	6.0	0.18
SLC-12-8	8.0	0.06
SLC-12-10	10.0	0.06
SLC-12-12	12.0	0.18

SLC-20

規格 Spec.	夾持範圍 Range d ₁	重量 (KGS) Weight
SLC-20-3	3.0	0.20
SLC-20-4	4.0	0.20
SLC-20-5	5.0	0.20
SLC-20-6	6.0	0.20
SLC-20-8	8.0	0.20
SLC-20-10	10.0	0.18
SLC-20-12	12.0	0.16
SLC-20-16	16.0	0.14
SLC-20-20	20	0.20



EBL 筒夾 EBL COLLET



NEW

特點 Feature

-EBL 筒夾的加長長度和刀柄特殊的加長內孔設計，增加刀具置入深度及刀具較短的懸身長

規格 Spec.	L	l ₁	d	d ₁	T	夾持範圍 Range
EBL - 6	53	15	8.5	10.5	M6	3 ~ 6mm
EBL - 8	58	22.2	12	15.09	M8	3 ~ 8mm

EBL-6

規格 Spec.	夾持範圍 Range d ₁
EBL-6-3	3.0
EBL-6-4	4.0
EBL-6-5	5.0
EBL-6-6	6.0

EBL-8

規格 Spec.	夾持範圍 Range d ₁
EBL-8-3	3.0
EBL-8-4	4.0
EBL-8-5	5.0
EBL-8-6	6.0
EBL-8-8	8.0

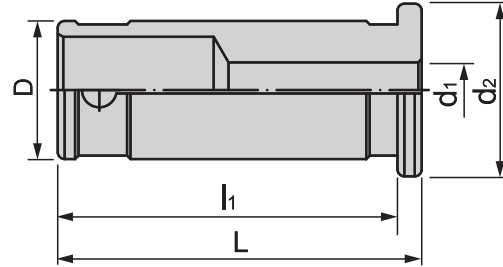


• 長度單位 Unit of Length (mm)



直式筒夾 STRAIGHT SHANK COLLET

精度 Accuracy : <0.02mm



特點 Feature

- 偏擺精度小於 0.02mm
- 限定夾持與孔徑相同之刀具柄徑
- 筒夾不具備彈性收縮範圍，強調夾持力
- 刀具置入筒夾必須超過內孔有效夾持長度，以達到有效夾持

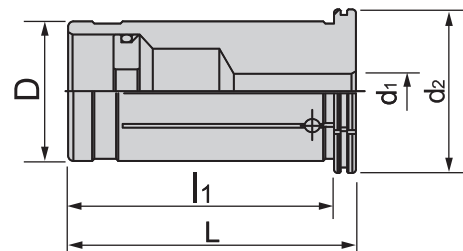
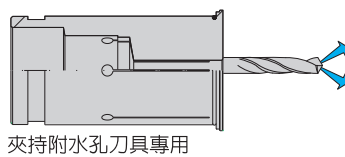
- Precision : within 0.02mm.
- Define clamp and aperture the same shank of tool diameter.
- The collet doesn't have the contraction scope, the emphasis chucking power.
- Cutting tool posts into the collet to surpass the hole effective clamp length, achieves the effective clamp.

規格 Spec.	D	筒夾孔徑 d ₁	d ₂	L	l ₁	重量 (KGS) Weight
SSC12	12	3, 4, 5, 6, 8	19	44.5	42.5	0.10
SSC16	16	3, 4, 5, 6, 8, 10, 12	19	50	46	0.10
SSC20	20	3, 4, 5, 6, 8, 10, 12, 16	25	52.5	49	0.10
SSC25	25	3, 4, 5, 6, 8, 10, 12, 16, 20	31	60	55	0.18
SSC32	32	3, 4, 5, 6, 8, 10, 12, 14, 16, 18, 20, 24, 25	37.5	64.6	59.6	0.30
SSC32	32	1/8, 1/4, 5/16, 3/8, 1/2, 5/8, 3/4, 1"	37.5	64.6	59.6	0.30
SSC42	42	3, 4, 5, 6, 8, 10, 12, 16, 20, 25, 32	48	75	69	0.60
SSC42	42	1/4, 5/16, 3/8, 1/2, 5/8, 3/4, 1"	48	75	69	0.60



直式止水筒夾 STRAIGHT SEALED COLLET

JIS
MAS 403
B6339



特點 Feature

- 可承受 21 kgf/cm² 水壓

- Water pressure up to 21 kgf/cm²

規格 Spec.	D	筒夾孔徑 aperture d ₁	d ₂	L	l ₁	重量 (KGS) Weight
SSC12-C	12	3, 4, 5, 6, 8	16	40	38	0.10
SSC20-C	20	3, 4, 5, 6, 8, 10, 12, 16	25	52.9	49.4	0.10
SSC25-C	25	3, 4, 5, 6, 8, 10, 12, 16, 20	30.5	52.5	50.5	0.18
SSC32-C	32	3, 4, 5, 6, 8, 10, 12, 16, 20, 25	37.5	66	61	0.30
SSC42-C	42	3, 4, 5, 6, 8, 10, 12, 16, 20, 25, 32	48	75	69	0.60

• 長度單位 Unit of Length (mm)

ACCESSORIES

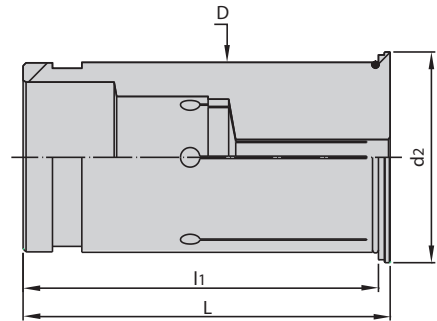


HYC 液壓套筒

HYC HYDRAULIC COLLET

精度 Accuracy : 5μm

LEMMA



特點 Feature

- 筒夾具有深冷處理

- Collet have sub-zero treatment.

規格 Spec.	L	l ₁	D	d ₂	重量 (KGS) Weight
HYC12	47	45	12	16.5	-
HYC16	52.5	50.5	16	20	-
HYC20	52.5	50.5	20	24	-
HYC32	62.5	60.5	32	35.5	-

HYC12

規格 Spec.	夾持範圍 Range
HYC12-03	3
HYC12-04	4
HYC12-05	5
HYC12-06	6
HYC12-08	8

HYC20

規格 Spec.	夾持範圍 Range
HYC20-03	3
HYC20-04	4
HYC20-05	5
HYC20-06	6
HYC20-07	7
HYC20-08	8
HYC20-09	9
HYC20-10	10
HYC20-11	11
HYC20-12	12
HYC20-13	13
HYC20-14	14
HYC20-15	15
HYC20-16	16

HYC32

規格 Spec.	夾持範圍 Range
HYC32-06	6
HYC32-08	8
HYC32-10	10
HYC32-12	12
HYC32-14	14
HYC32-16	16
HYC32-18	18
HYC32-20	20
HYC32-25	25

HYC16

規格 Spec.	夾持範圍 Range
HYC16-03	3
HYC16-04	4
HYC16-06	5
HYC16-08	6
HYC16-10	8
HYC16-12	12



HYC 液壓出水套筒

HYC HYDRAULIC COOLANT COLLET

LEMMA



Fig.1

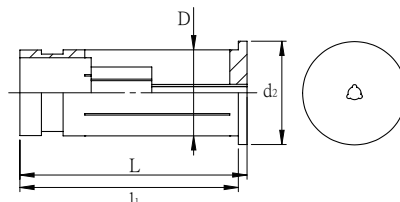
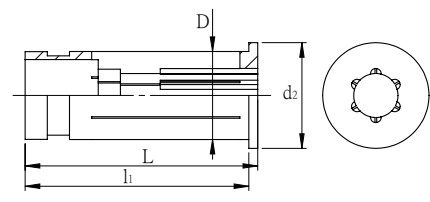


Fig.2



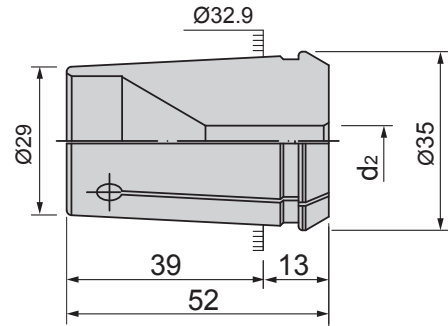
ACCESSORIES

HYC20-FID

規格 Spec.	夾持範圍 Range	Fig.
HYC20-03-FID	3	1
HYC20-04-FID	4	1
HYC20-06-FID	6	2
HYC20-08-FID	8	2
HYC20-10-FID	10	2
HYC20-12-FID	12	2

• 長度單位 Unit of Length (mm)

精度 Accuracy <0.02mm

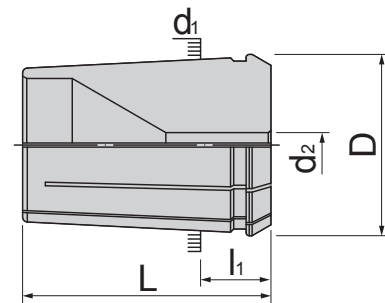


- 偏擺精度 <0.02mm
- 限定夾持與孔徑相同之刀具柄徑
- 筒夾不具備彈性收縮範圍·強調夾持力

- Precision:<0.02mm.
- The same with the aperture defining gripping tool shank diameter.
- Collet does not have the flexibility contraction range, emphasizing the clamping force.

規格 Spec.	內孔尺寸 d2	重量 (KGS) Weight
SYOZ-25	3, 4, 5, 6, 7, 8, 9, 10, 11, 12, 13, 16, 18, 20, 25mm	0.24

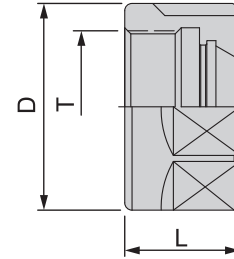
精度 Accuracy <0.02mm



- 材質 :SUJ2 - HRC46°
- 收縮彈性為 0.5mm
- 前端及後端均有 6 溝
- 偏擺精度 <0.02mm
- ※ 可訂購尺寸間隔 0.5mm 或英制規格

- Steel:SUJ2 - HRC46°
- Increment by 0.5mm.
- With 6 slots in front and back.
- Precision:<0.02mm.
- ※Can order size Increment by steps 0.5mm or Inch size as desired.

規格 Spec.	L	l ₁	D	d ₁	內孔尺寸 d ₂	重量 (KGS) Weight
EOC32-B	60	17	43.7	41.3	4, 5, 6, 7, 8, 9, 10, 11, 12, 13, 14, 15, 16, 17, 18, 19, 20, 21, 22, 23, 24, 25, 26, 27, 28, 29, 30, 31, 32mm	0.5



- 材質 : SNCM-415
- 硬度 HRC52°
- 螺紋及 30°斜度一次成型加工，確保精度、螺紋公差為一級牙 4H
- 使用時，應先將筒夾置入螺帽，再一併置入本體

特點 Feature

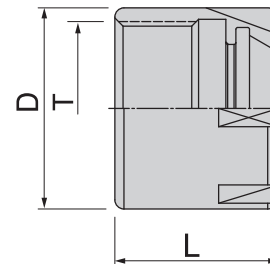
- 已預設平衡、適於 R.P.M10000 使用，專利在案
- 拴緊作業請使用 ER-A 扳手，不可任意改變扳手長度，以免造成人為因素損壞

- Steel:SNCM-415
- Hardness: HRC52°
- The thread and 30° taper are finished processing in one time. The precision and the tolerance are of thread 4H.
- When using, please put the collet into nut and put them into the body together.

- Pre-balanced. Suitable for 10000rpm. Has a patent.
- Fasten jobs please use ER-A wrench, can not be arbitrarily changed Variable length wrench to avoid damage to human factors.

規格 Spec.	L	D	T	重量 (KGS) Weight
ER11-A	11.3	19	M14x0.75P	0.02
ER16-A	18.5	28	M22x1.5P	0.05
ER20-A	20	34	M25x1.5P	0.10

- 螺帽採標準平衡 G6.3 Nut balanced G6.3 standards adopted.



- 材質 : SNCM-220
- 硬度 HRC52°
- 螺紋及 30°斜度一次成型加工，確保精度、螺紋公差為一級牙 4H
- 使用時，應先將筒夾置入螺帽，再一併置入本體

特點 Feature

- 外徑較標準螺紋小，適於閃避或是避免干涉的場合不使用
- M 型螺帽的螺紋和 A 型不一樣，本體不能共用
- 已預設平衡、適於 R.P.M10000 使用，專利在案

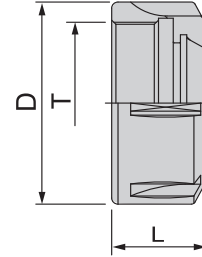
- Steel:SNCM-220
- Hardness: HRC52°
- The thread and 30° taper are finished processing in one time. The precision and the tolerance are of thread 4H.
- When using, please put the collet into nut and then put them into the body together.

- Many machines' spindles are manufactured by ER-M's size.
- ER-M clamping nut is specially processed for small bore.It's external diammer and thread are smaller than ER-A
- Pre-balanced. Suitable for 10000rpm. Has a patent.

規格 Spec.	L	D	T	重量 (KGS) Weight
ER8-M	10.8	12	M10x0.75P	0.005
ER11-M	11.3	16	M13x0.75P	0.01
ER16-M	18	22	M19x1.0P	0.05
ER20-M	19	28	M24x1.0P	0.05
ER25-M	20	35	M30x1.0P	0.08

- 螺帽採標準平衡 G6.3 Nut balanced G6.3 standards adopted.

• 長度單位 Unit of Length (mm)



- 材質 : SNCM-415
- 硬度 HRC52°
- 螺紋及 30°斜度一次成型加工，確保精度、螺紋公差為一級牙 4H
- 使用時，應先將筒夾置入螺帽，再一併置入本體

- Steel:SNCM-415
- Hardness: HRC52°
- The thread and 30° taper are finished processing in one time. The precision and the tolerance are of thread 4H.
- When using, please put the collet into nut, and then put them into the body together.

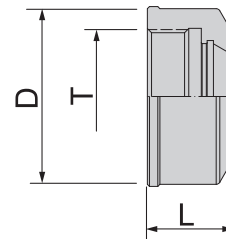
特點 Feature

- 已預設平衡、適於 R.P.M10000 使用，專利在案

- Pre-balanced. Suitable for 10000rpm. Has a patent.

規格 Spec.	L	D	T	重量 (KGS) Weight
ER16-UM-RD	18	31.7	M22x1.5P	0.05
ER20-UM-RD	19.5	35	M25x1.5P	0.10
ER25-UM-RD	21	42	M32x1.5P	0.11
ER32-UM-RD	23.5	50	M40x1.5P	0.20
ER40-UM-RD	26.5	63	M50x1.5P	0.27
ER50-UM-RD	35.3	78	M64x2.0P	0.50

- 螺帽採標準平衡 G6.3 Nut balanced G6.3 standards adopted.



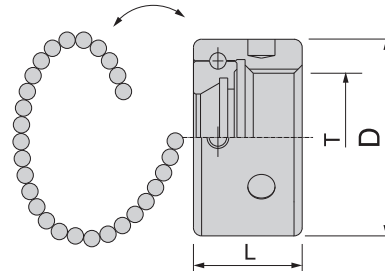
特點 Feature

- 經過特殊的表面處理，夾緊力提高了 50%~ 100%
- 無槽設計減少風阻，可用於高速應用

- Due to special surface treatment, clamping power is increased by 50%~100%.
- Its non-slot design decreases wind resistance, and can be used for high speed application.

規格 Spec.	L	D	T	重量 (KGS) Weight
ER16-HS	17.5	30	M22x1.5P	0.05
ER20-HS	19	34	M25x1.5P	0.10
ER25-HS	20	42	M32x1.5P	0.14
ER32-HS	22.5	50	M40x1.5P	0.23

• 長度單位 Unit of Length (mm)



- ER 高速型螺帽
- 材質 :SNCM-220
- 硬度 HRC52°
- 螺紋公差為一級牙 4H
- 使用時，應先將筒夾置入螺帽，再一併置入本體

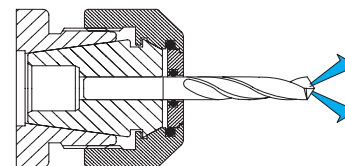
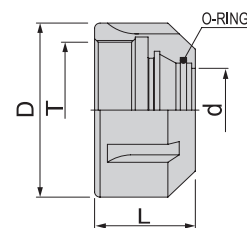
特點 Feature

- 使用 ER 標準扳手
- 環型彈簧無偏心設計，收縮夾持量不可大於 0.3mm
- 外徑經過精密研磨，減少不少平衡量
- 根據 ISO 1941-1 標準，並經過平衡檢驗機測試
- 可供 G2.5 15,000 rpm 機器使用
- 配合 UP 級筒夾、精度以及穩定性大增
- 專利在案

- Steel:SNCM-220
- Hardness: HRC52°
- The thread and 30° taper are finished processing in one time. The precision and the tolerance are of thread 4H.
- When using, please put the collet into nut and then put them into the body together.

- Use the ER standard spanner.
- The ring spring is non-eccentric design, shrink clamping is within 0.3mm.
- The external diameter is treated with precise grind reaches balancing.
- According to ISO1941-1 standard. Tested by balancing machine.
- The balancing is under G2.5. Can be used on the machine of G2.5 15000rpm.
- Match UP grade collet, increased of precision and stability.
- Has a patent.

規格 Spec.	L	D	T	重量 (KGS) Weight
ER16-HSP	18	32	M22x1.5P	0.008
ER20-HSP	20	36	M25x1.5P	0.10
ER25-HSP	22.5	42	M32x1.5P	0.10
ER32-HSP	25	50	M40x1.5P	0.15
ER40-HSP	27.5	63	M50x1.5P	0.27

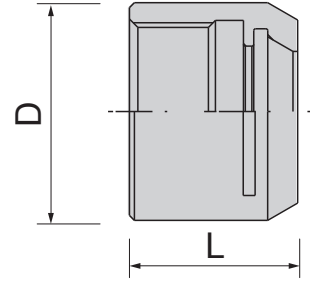


規格 Spec.	L	D	d	T	重量 (KGS) Weight
ER16-CO	22.5	28	11	M22x1.5P	-
ER20-CO	24	34	14	M25x1.5P	-
ER25-CO	25	42	19	M32x1.5P	-
ER32-CO	27.5	50	24	M40x1.5P	-
ER40-CO	30.5	63	30	M50x1.5P	-

• 長度單位 Unit of Length (mm)



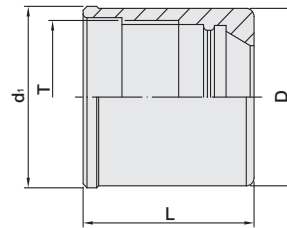
ER-MHG 螺帽 ER-MHG COLLET CHUCK NUT



規格 Spec.	L	D	重量 (KGS) Weight
ER16-MHG	17	22	-
ER20-MHG	19	28	0.04
ER25-MHG	23	35	-



PTER 螺帽 PTER NUT

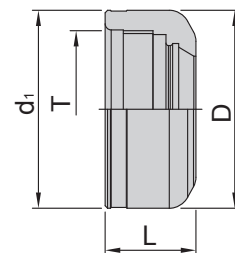


NEW

規格 Spec.	L	D	d ₁	T	扭力值 Torque		重量 (KGS) Weight
					N.m	ft-lbs	
PTER8-P	13.5	12	12.5	M10x0.75P	3.5	2.5	0.004
PTER11-P	19	16	16.5	M13x0.75P	20	14	0.012
PTER16-P	22	22	22.5	M19x1.0P	30	22	0.022
PTER20-P	24	28	28.5	M24x1.0P	50	36	0.042



PNER 螺帽 PNER NUT



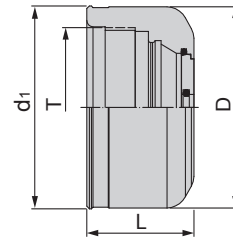
規格 Spec.	L	D	d ₁	T	扭力值 Torque		重量 (KGS) Weight
					N.m	ft-lbs	
PNER16-P	23	30	30.5	M22x1.5P	40	30	0.03
PNER20-P	24	32	32.5	M25x1.5P	60	44	0.04
PNER25-P	24	40	40.5	M32x1.5P	80	59	0.06
PNER32-P	27	50	50.5	M40x1.5P	110	81	0.10
PNER40-P	30	63	63.5	M50x1.5P	130	95	0.25

• 長度單位 Unit of Length (mm)

ACCESSORIES



PNER 止水螺帽 PNER SEALED NUT

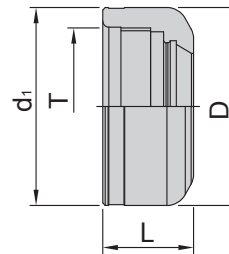


規格 Spec.	L	D	d ₁	T	止水環 Sealed Ring	扭力值 Torque		重量 (KGS) Weight
						N.m	ft-lbs	
PNER16-CO	27	30	30.5	M22x1.5P	SR16	40	30	0.08
PNER20-CO	29	32	32.5	M25x1.5P	SR20	60	44	0.08
PNER25-CO	29	40	40.5	M32x1.5P	SR25	80	59	0.14
PNER32-CO	32	50	50.5	M40x1.5P	SR32	110	81	0.22
PNER40-CO	35	63	63.5	M50x1.5P	SR40	130	95	0.40

※ 需搭配止水環使用 Should be used with Coolant rings.



PNER 偏心螺帽 PNER ECCENTRIC NUT

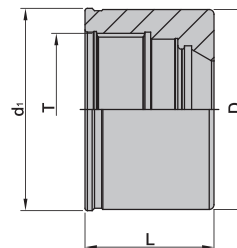


NEW

規格 Spec.	L	D	d ₁	T	扭力值 Torque		重量 (KGS) Weight
					N.m	ft-lbs	
PNER16-A	22	30	30.5	M22x1.5P	40	30	0.03
PNER20-A	24	32	32.5	M25x1.5P	60	44	0.04
PNER25-A	24	40	40.5	M32x1.5P	80	59	0.06
PNER32-A	27	50	50.5	M40x1.5P	110	81	0.10
PNER40-A	30	63	63.5	M50x1.5P	130	95	0.25



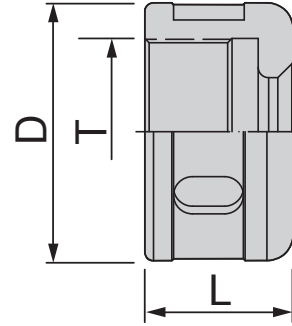
Pro.E 螺帽 Pro.E NUT



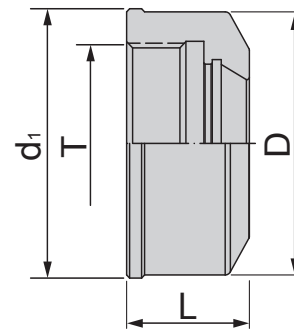
NEW

規格 Spec.	L	D	d ₁	T	建議扭力值 Recommended Tightening Torque	重量 (KGS) Weight
Pro.E16-A	22	30	30.3	M22x1.5P	65 N-m	0.10
Pro.E20-A	23.5	35	35.3	M27x1.5P	80 N-m	0.10
Pro.E25-A	24.6	42	42.7	M32x1.5P	140 N-m	0.16
Pro.E32-A	27	50	50.7	M40x1.5P	170 N-m	0.16

• 長度單位 Unit of Length (mm)

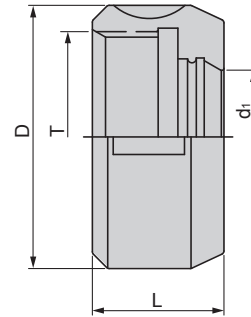


規格 Spec.	L	D	T	扭力值 Torque		重量 (KGS) Weight
				N.m	ft-lbs	
SKS6-P	15	18	M14x1.0P	25	18	0.06
SKS10-P	17	30	M21.5x1.0P	45	33	0.04
SKS13-P	21	33	M27x1.0P	50	36	0.06
SKS16-P	24.5	40	M32x1.5P	70	51	0.12
SKS20-P	24	48.5	M40x1.0P	70	51	0.14
SKS25-P	30.5	55	M45x1.5P	100	73	1.00



規格 Spec.	L	D	d ₁	T	扭力值 Torque		重量 (KGS) Weight
					N.m	ft-lbs	
SKS-6-HS-P	15	18	19	M14x1.0P	25	18	0.02
SKS-10-HS-P	17	30	31	M21.5x1.0P	45	33	0.06
SKS-13-HS-P	21	34	35	M27x1.0P	50	36	0.07
SKS-16-HS-P	24.5	40	41	M32x1.5P	70	51	0.12
SKS-20-HS-P	24	48	48.5	M40x1.0P	70	51	0.14
SKS-25-HS-P	30.5	55	56	M45x1.0P	100	73	0.23

• 長度單位 Unit of Length (mm)



規格 Spec.	L	D	d ₁	T	扭力值 Torque		重量 (KGS) Weight
					N.m	ft-lbs	
EOC25-P	30.0	60	29.7	M48x2.0P	200	147	0.30
EOC32-P	33.5	72	38.5	M60x2.5P	220	220	0.45



Fig.1

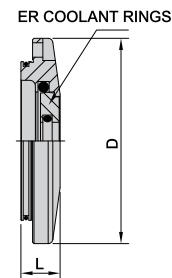
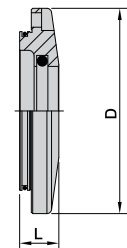


Fig.2



特點 Feature

- 適合用於有中心出水的刀具
- 使用 MLD 止水環可使冷卻液從刀具排出，利於散熱及有效排屑

- Suitable for cutting tools with a coolant hole.
- Coolant fluid exhausting from the cutting tool if used with MLD sealed cap. It's good for heat dissipation and discharges the metal chips effectively.

規格 Spec.	夾持範圍 Size Range	L	D	Fig.	重量 (KGS) Weight
MLD12-C	Ø3~Ø8	8.9	38.2	1	0.04
	Ø12	8.9	38.2	2	
MLD16-C	Ø3~Ø12	8.9	42.2	1	0.04
	Ø16	8.9	42.2	2	
MLD20-C	Ø3~Ø16	8.9	44	1	0.06
	Ø20	8.9	44	2	
MLD25-C	Ø3~Ø20	10.4	51	1	0.90
	Ø25	10.4	51	2	
MLD32-C	Ø3~Ø25	11.05	60	1	0.12
	Ø32	11.05	60	2	
MLD42-C	Ø3~Ø25	12.02	70	1	0.20
	Ø42	12.02	70	2	

• 長度單位 Unit of Length (mm)



特點 Feature



- 無彈性 (沒有彈性夾持範圍·需看最大夾持範圍)
- 可承受水壓達 21kgf/cm²
- 兼具阻隔切屑飛入的功用
- 止水環搭配止水螺帽使用·等同止水筒夾
- No flexibility (No flexible chucking range, according to the biggest chucking range).
- Can bear the water pressure up to 21kgf/cm².
- Can avoid the chips.
- When the coolant ring is matched with the coolant nut, the function is the same as coolant collet.

SR16

規格 Spec.	夾持範圍 Range	規格 Spec.	夾持範圍 Range	重量 (KGS) Weight
SR16-03.5	3.5	SR16-07.0	7.0	0.05
SR16-04.0	4.0	SR16-07.5	7.5	0.05
SR16-04.5	4.5	SR16-08.0	8.0	0.05
SR16-05.0	5.0	SR16-08.5	8.5	0.05
SR16-05.5	5.5	SR16-09.0	9.0	0.05
SR16-06.0	6.0	SR16-09.5	9.5	0.05
SR16-06.5	6.5	SR16-10.0	10.0	0.05

SR20

規格 Spec.	夾持範圍 Range	規格 Spec.	夾持範圍 Range	重量 (KGS) Weight
SR20-03.5	3.5	SR20-08.5	8.5	0.07
SR20-04.0	4.0	SR20-09.0	9.0	0.07
SR20-04.5	4.5	SR20-09.5	9.5	0.07
SR20-05.0	5.0	SR20-10.0	10.0	0.07
SR20-05.5	5.5	SR20-10.5	10.5	0.07
SR20-06.0	6.0	SR20-11.0	11.0	0.07
SR20-06.5	6.5	SR20-11.5	11.5	0.07
SR20-07.0	7.0	SR20-12.0	12.0	0.07
SR20-07.5	7.5	SR20-12.5	12.5	0.07
SR20-08.0	8.0	SR20-13.0	13.0	0.07

SR25

規格 Spec.	夾持範圍 Range	規格 Spec.	夾持範圍 Range	重量 (KGS) Weight
SR25-03.5	3.5	SR25-10.0	10.0	0.10
SR25-04.0	4.0	SR25-10.5	10.5	0.10
SR25-04.5	4.5	SR25-11.0	11.0	0.10
SR25-05.0	5.0	SR25-11.5	11.5	0.10
SR25-05.5	5.5	SR25-12.0	12.0	0.10
SR25-06.0	6.0	SR25-12.5	12.5	0.10
SR25-06.5	6.5	SR25-13.0	13.0	0.10
SR25-07.0	7.0	SR25-13.5	13.5	0.10
SR25-07.5	7.5	SR25-14.0	14.0	0.10
SR25-08.0	8.0	SR25-14.5	14.5	0.10
SR25-08.5	8.5	SR25-15.0	15.0	0.10
SR25-09.0	9.0	SR25-15.5	15.5	0.10
SR25-09.5	9.5	SR25-16.0	16.0	0.10

SR32

規格 Spec.	夾持範圍 Range	規格 Spec.	夾持範圍 Range	重量 (KGS) Weight
SR32-03.5	3.5	SR32-12.0	12.0	0.15
SR32-04.0	4.0	SR32-12.5	12.5	0.15
SR32-04.5	4.5	SR32-13.0	13.0	0.15
SR32-05.0	5.0	SR32-13.5	13.5	0.15
SR32-05.5	5.5	SR32-14.0	14.0	0.15
SR32-06.0	6.0	SR32-14.5	14.5	0.15
SR32-06.5	6.5	SR32-15.0	15.0	0.15
SR32-07.0	7.0	SR32-15.5	15.5	0.15
SR32-07.5	7.5	SR32-16.0	16.0	0.15
SR32-08.0	8.0	SR32-16.5	16.5	0.15
SR32-08.5	8.5	SR32-17.0	17.0	0.15
SR32-09.0	9.0	SR32-17.5	17.5	0.15
SR32-09.5	9.5	SR32-18.0	18.0	0.15
SR32-10.0	10.0	SR32-18.5	18.5	0.15
SR32-10.5	10.5	SR32-19.0	19.0	0.15
SR32-11.0	11.0	SR32-19.5	19.5	0.15
SR32-11.5	11.5	SR32-20.0	20.0	0.15

SR40

規格 Spec.	夾持範圍 Range	規格 Spec.	夾持範圍 Range	規格 Spec.	夾持範圍 Range	規格 Spec.	夾持範圍 Range	重量 (KGS) Weight
SR40-03.5	3.5	SR40-09.5	9.5	SR40-15.5	15.5	SR40-21.5	21.5	0.27
SR40-04.0	4.0	SR40-10.0	10.0	SR40-16.0	16.0	SR40-22.0	22.0	0.27
SR40-04.5	4.5	SR40-10.5	10.5	SR40-16.5	16.5	SR40-22.5	22.5	0.27
SR40-05.0	5.0	SR40-11.0	11.0	SR40-17.0	17.0	SR40-23.0	23.0	0.27
SR40-05.5	5.5	SR40-11.5	11.5	SR40-17.5	17.5	SR40-23.5	23.5	0.27
SR40-06.0	6.0	SR40-12.0	12.0	SR40-18.0	18.0	SR40-24.0	24.0	0.27
SR40-06.5	6.5	SR40-12.5	12.5	SR40-18.5	18.5	SR40-24.5	24.5	0.27
SR40-07.0	7.0	SR40-13.0	13.0	SR40-19.0	19.0	SR40-25.0	25.0	0.27
SR40-07.5	7.5	SR40-13.5	13.5	SR40-19.5	19.5	SR40-25.5	25.5	0.27
SR40-08.0	8.0	SR40-14.0	14.0	SR40-20.0	20.0	SR40-26.0	26.0	0.27
SR40-08.5	8.5	SR40-14.5	14.5	SR40-20.5	20.5			
SR40-09.0	9.0	SR40-15.0	15.0	SR40-21.0	21.0			

• 長度單位 Unit of Length (mm)



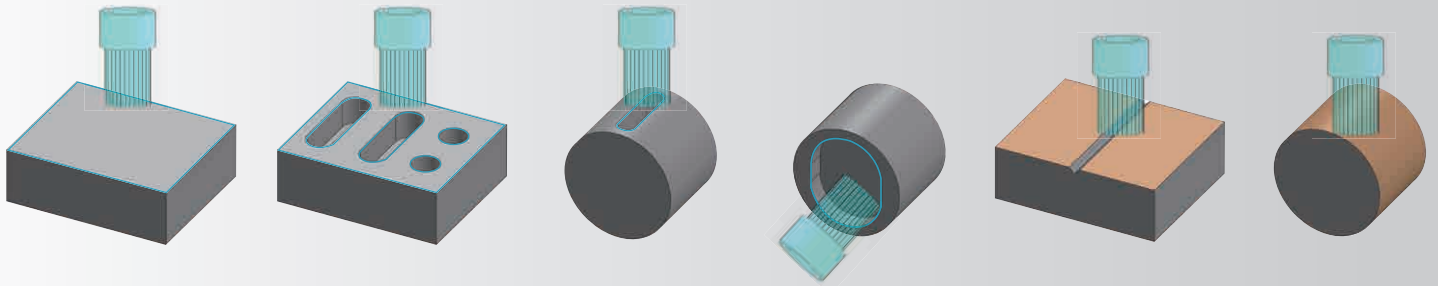
DMB 鑽石研磨刷

DIAMOND BRUSH

去除切削刀痕
Remove the machining tool marks

表面拋光
Polishing

去除毛刺
Deburring



研磨刷應用 Application

功能 Function	去毛刺 Deburring				表面精修(拋光) Polishing		
毛刷材質 Bristles type	碳化矽 (SiC)	陶瓷 Ceramic Bristle (CE)	氧化鋁 (Al ₂ O ₃)	鑽石 Diamond (ND)	陶瓷 Ceramic Bristle (CE)	氧化鋁 (Al ₂ O ₃)	鑽石 Diamond (ND)
可加工材質 Machining Materials	鋼材、不鏽鋼 鋁、非鐵金屬 Steel Stainless Steel Aluminum Non-Ferrous Metal	鋼材、鑄鐵 不鏽鋼 Steel Stainless steel Cast Iron	鋼材 非鐵合金 Steel Non-Ferrous Metal	陶瓷、碳化鎢 有色金屬 Ceramic WC Non-Ferrous Metal	鋼材、鑄鐵 不鏽鋼 Steel Stainless steel Cast Iron	鋼材 非鐵合金 Steel Non-Ferrous Metal	陶瓷、碳化鎢 有色金屬 Ceramic WC Non-Ferrous Metal
粒度 Granularity	#200		#400	#800	#1000		

搭配使用標準FMB/FMA平面銑刀柄。
It is compatible with standard FMB / FMA face mill arbors.

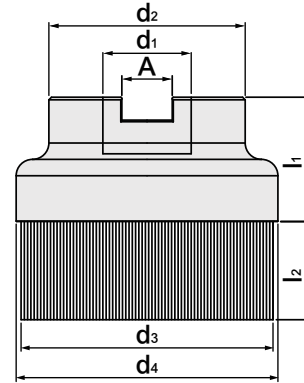


適合加工材質：鋁、銅、金屬、鎳基合金、鎢鋼(超硬合金)、硬脆材料
 例：刀具鈍化、玻璃陶瓷、石英等表面拋光。
 例：鎳基合金(航太業)、所有熱處理後之金屬。

Workpiece material: aluminum, copper, metal, nickel alloy, tungsten steel, hard and brittle material.
 e.g. honing, glass or ceramics polishing, quartz polishing
 e.g. nickel alloys (Aerospace industry), heat-treated metals



DMB 鑽石研磨刷 DIAMOND BRUSH



特點 Feature

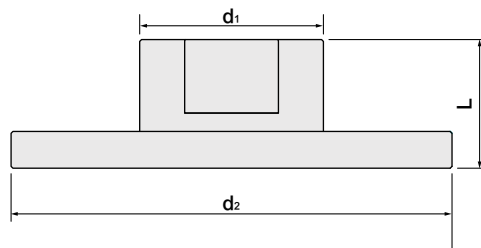
- 依據不同需求選擇不同粒度研磨刷
粒度: #200、#400、#600、#800、#1000

- Choose different grit abrasive brushes according to different needs
Granularity: #200, #400, #600, #800, #1000

規格 Spec.	d ₁	d ₂	d ₃	d ₄	l ₁	l ₂	A
DMB50-22	FMB-22	50	47	50	30	30	10.4
DMB63-22	FMB-22	48	60	63	30	30	10.4
DMB80-27	FMB-27	60	77	80	38	30	12.4
DMB100-32	FMB-32	80	97	100	40	30	14.4
DMB50-25.4	FMA-25.4	50	47	50	30	30	9.5
DMB63-25.4	FMA-25.4	50	60	63	30	30	9.5
DMB80-31.75	FMA-31.75	60	77	80	38	30	12.7
DMB100-31.75	FMA-31.75	80	97	100	40	30	12.7



DDB 鑽石整修板 DDB DIAMOND DRESSING BOARD



特點 Feature

- 加工後的毛刷若受損或磨耗，可用鑽石整修板，去除磨損毛刷，即可接續使用。

- We can use the diamond refurbish board to remove the damaged brush after machining.

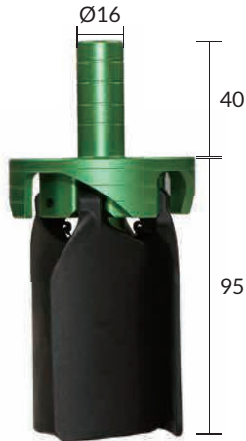
規格 Spec.	L	d ₁	d ₂	重量 (KGS) Weight
DDB120	35	50	120	0.54

範例 Example

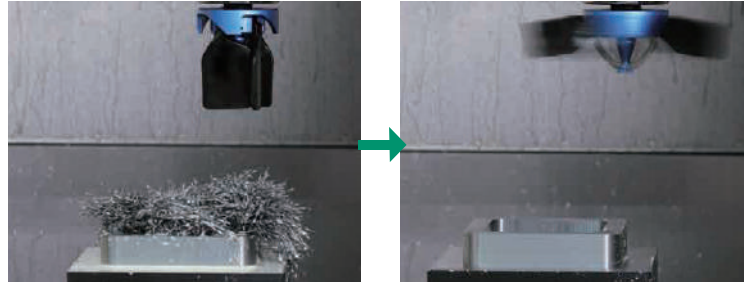


- 修砂時建議將研磨刷設定轉速 S=2000rpm 切深 AP=0.5mm 將研磨刷整平停留秒數 30 秒
-While repairing diamond brush, recommend setting: rotation speed S=2000rpm, depth of cut AP=0.5mm. Remember not to move the brush, finish setting the data and just hold on for 30 seconds.

• 長度單位 Unit of Length (mm)



範例 Example



使用前 Before

使用後 After

特點 Feature

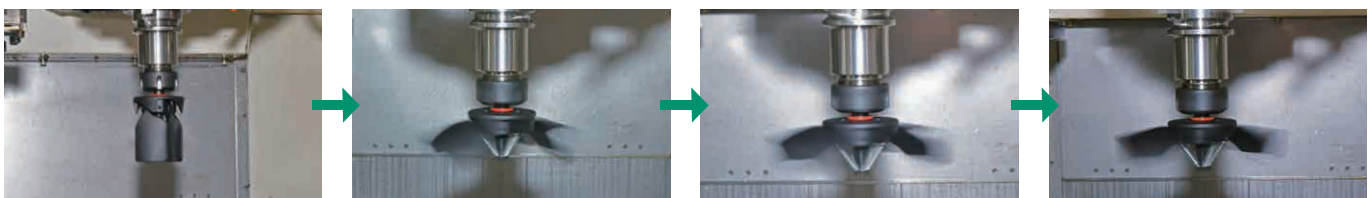
鐵屑清除器作動原理是利用機械主軸迴轉帶動扇葉展開，產生強力氣流，配合適當的路徑，對工作台上的切屑與切削液進行清除，相較傳統的氣槍清理方式，降低人員操作，環境的汙損，提高生產效能。

The operating principle of the chip blower is to use the rotation of mechanical spindle to drive the fan blades to expand, generate a strong air flow, and cooperate with the appropriate path to remove the chips and cutting fluid on the machine platform. Compared with the traditional air gun cleaning method, it reduces the operation from personnel and environmental pollution and also improve production efficiency.

規格 Spec.	建議轉速 Recommend Rotation Speed	轉向 Direction of Rotation	扇葉展開尺寸 Opening Size of Fan Blade	扇葉與工件距離 Distance to Workpieces Surface	建議路徑移動速度 Recommend Movement Feed	夾持柄徑 Shank Diameter	重量 (KGS) Weight
PIS-200	Min 7,000~ Max 10,000 r.p.m	順時針 Clockwise Rotation	≅ 195mm	100~150mm	1,000~12,000	16mm	0.12kg

注意事項 Notice

- 起動轉速 500R.P.M 後提高至 2,000R.P.M，扇葉展開後再提高至轉速 7,000~10,000R.P.M。
 - 使用時，因扇葉展開高度與直徑的變化，須距離工件至少 100MM，並避免夾治具干涉。
 - 使用時避免切屑與切削液飛濺，機台設備需完全緊閉，且鐵屑清除器須處於完全靜止的狀態下才能重新開啟。
 - 本產品扇葉為耗材，多次的開合使用或不正常適用造成碰撞，均會造成扇葉的損耗，如發現缺損時，則不能繼續使用，避免扇葉斷裂造成損失。
- 7,000~10,000R.P.M。
Startup spindle speed: From 500R.P.M to 2,000R.P.M. Then, increased the speed (7,000R.P.M.~10,000R.P.M.) after the fan blades are deployed.
- Due to the changes in the unfolded height and diameter of the fan blades, the distance from the surface of workpieces must be at least 100mm to avoid the interference from fixture.
- Avoid splashing of chips and cutting fluid during use. The machine door must be completely closed. Before attempting to reopen the chip blower, it must be fully stationary first.
- Fan blades of chip blower are consumable. Collisions caused by multiple opening and closing or abnormal application will cause the loss of the fan blade. If a defect is found, it cannot be used continuously to avoid damage.



500rpm

2000rpm

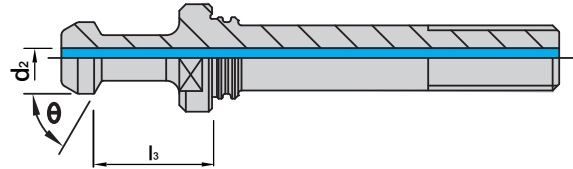
4000rpm

7000rpm

• 長度單位 Unit of Length (mm)



BT30/SFS 螺栓拉頭 BT30/SFS PULL STUD



規格 Spec.	l_3	d_2	θ	重量 (KGS) Weight
BT30 - 45° - MAS	18	3	45°	0.10
BT30 - 60° - MAS	18	3	60°	0.30



JIS6339 螺栓拉頭 JIS6339 PULL STUD



Fig.1

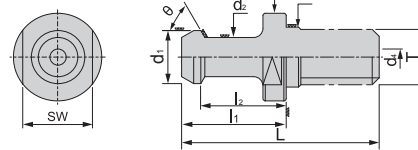
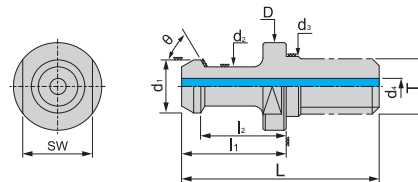


Fig.2

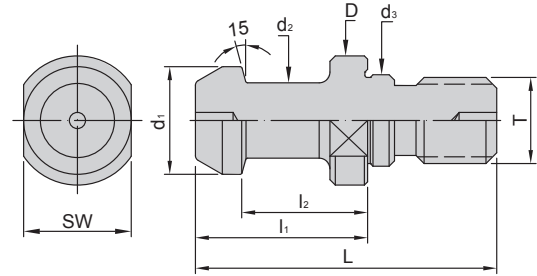


規格 Spec.	L	l_1	l_2	D	d_1	d_2	d_3	d_4	SW	T	θ	Fig
JIS6339-BT30-G	43	23.4	18.4	16.5	12	8	12.5	-	13	M12*1.75	75°	1
JIS6339-BT40-G	54	29	23	23	19	14	17	-	19	M16*2.0	75°	1
JIS6339-BT50-G	74	34	25	38	28	21	25	-	30	M24*3.0	75°	1
JIS6339-BT30-HG	43	23.4	18.4	16.5	12	8	12.5	4	13	M12*1.75	75°	2
JIS6339-BT40-HG	54	29	23	23	19	14	17	7	19	M16*2.0	75°	2
JIS6339-BT50-HG	74	34	25	38	28	21	25	10	30	M24*3.0	75°	2

• 長度單位 Unit of Length (mm)



ISO 螺栓拉頭 ISO PULL STUD

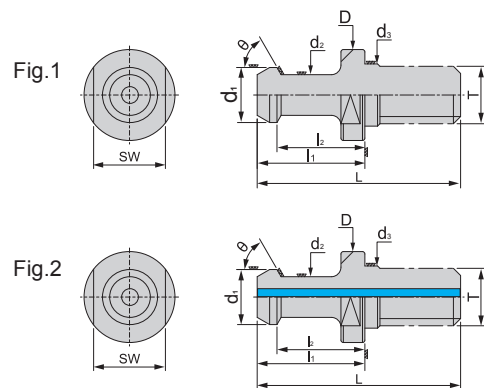


規格 Spec.	L	l ₁	l ₂	D	d ₁	d ₂	d ₃	SW	T	重量 (KGS) Weight
ISO20- 15°	26	12	9	12	9	6	8.5	10	M8	0.10
ISO25- 15°	28	16	11.7	12	10	7	8.5	10	M8	0.10
ISO25- 45°	31	18	13.5	12	10	7	9	10	M8	0.10
ISO30- 45°	45	24	19	17	12.8	9	13	14	M12	0.30



BT-HS 研磨螺栓拉頭 BT-HS HIGH STRENGTH PULL STUD

LEMMA



特點 Feature

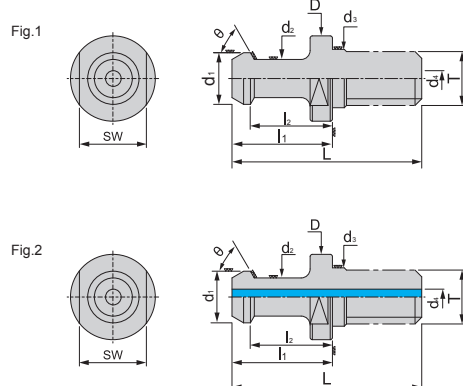
- HS 系列硬度可達到 HRC60°
- 外徑研磨加工以兩頂心孔做研磨牙級的中心點，減少累計公差，減少偏擺

- HS series degree of hardness may achieve HRC60°.
- Grinding the external thread by using the support of two live centers to reduce the accumulated tolerance and runout.

規格 Spec.	L	l ₁	l ₂	D	d ₁	d ₂	d ₃	SW	T	θ	Fig.	重量 (KGS) Weight
BT30- 45° -HS	43	23	18	16.5	11	7	12.5	13	M12x1.75P	45°	1	0.03
BT30- 60° -HS	43	23	18	16.5	11	7	12.5	13	M12x1.75P	60°	1	0.03
BT40- 45° -HS	60	35	28	23	15	10	17	19	M16x2.0P	45°	1	0.08
BT40- 45° -HS-W	60	35	28	23	15	10	17	19	M16x2.0P	45°	2	0.08

• 長度單位 Unit of Length (mm)

ACCESSORIES



特點 Feature

- 外徑研磨加工以兩頂心孔做研磨牙級的中心點，減少累計公差，減少偏擺

- Grinding the external thread by using the support of two live centers to reduce the accumulated tolerance and runout.

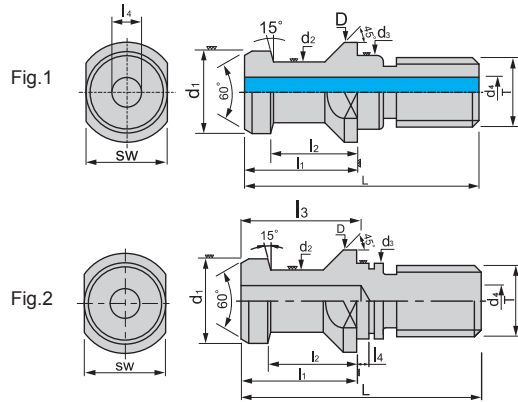
規格 Spec.	L	l ₁	l ₂	D	d ₁	d ₂	d ₃	d ₄	SW	T	Fig.	θ	重量 (KGS) Weight
BT30- 45° -G	43	23	18	16.5	11	7	12.5	-	13	M12x1.75P	1	45°	0.05
BT30- 60° -G	43	23	18	16.5	11	7	12.5	-	13	M12x1.75P	1	60°	0.05
BT30- 90° -G	43	23	18	16.5	11	7	12.5	-	13	M12x1.75P	1	90°	0.05
BT40- 45° -G	60	35	28	23	15	10	17	-	19	M16x2.0P	1	45°	0.10
BT40- 60° -G	60	35	28	23	15	10	17	-	19	M16x2.0P	1	60°	0.10
BT40- 90° -G	60	35	28	23	15	10	17	-	19	M16x2.0P	1	90°	0.10
BT50- 45° -G	85	45	35	38	23	17	25	-	30	M24x3.0P	1	45°	0.28
BT50- 60° -G	85	45	35	38	23	17	25	-	30	M24x3.0P	1	60°	0.28
BT50- 90° -G	85	45	35	38	23	17	25	-	30	M24x3.0P	1	90°	0.27
BT30- 45° -HG (2x3)	43	23	18	16.5	11	7	12.5	2x3	13	M12x1.75P	2	45°	0.03
BT30- 60° -HG (2x3)	43	23	18	16.5	11	7	12.5	2x3	13	M12x1.75P	2	60°	0.03
BT40- 45° -HG (4)	60	35	28	23	15	10	17	4	19	M16x2.0P	2	45°	0.07
BT40- 60° -HG (4)	60	35	28	23	15	10	17	4	19	M16x2.0P	2	60°	0.07
BT40- 90° -HG (4)	60	35	28	23	15	10	17	4	19	M16x2.0P	2	90°	0.07
BT40- 45° -HG (5)	60	35	28	23	15	10	17	5	19	M16x2.0P	2	45°	0.07
BT40- 60° -HG (5)	60	35	28	23	15	10	17	5	19	M16x2.0P	2	60°	0.07
BT50- 45° -HG (7)	85	45	35	38	23	17	25	7	30	M24x3.0P	2	45°	0.25
BT50- 60° -HG (7)	85	45	35	38	23	17	25	7	30	M24x3.0P	2	60°	0.25
BT50- 90° -HG (7)	85	45	35	38	23	17	25	7	30	M24x3.0P	2	90°	0.25
■ BT50- 45°	85	45	35	38	23	17	25	-	30	M24x3.0P	1	45°	0.30
■ BT50- 60°	85	45	35	38	23	17	25	-	30	M24x3.0P	1	60°	0.30
■ BT50- 90°	85	45	35	38	23	17	25	-	30	M24x3.0P	1	90°	0.30

■ 無研磨 Grind

- 中心給水規格 (4)&(7) 可以通過 3mm&6mm 六角扳手
- Center coolant specification (4) & (7) can use with the hex wrench 3mm & 6mm

DAT 研磨螺栓拉頭 DAT HIGH STRENGTH PULL STUD

LEMMA



特點 Feature

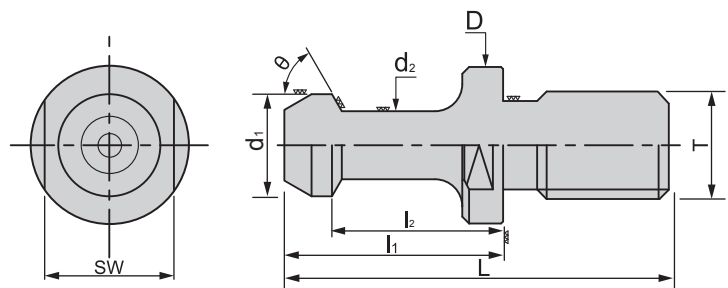
- 外徑研磨加工以兩頂心孔做研磨牙級的中心點，減少累計公差，減少偏擺

- Grinding the external thread by using the support of two live centers to reduce the accumulated tolerance and runout.

規格 Spec.	L	l ₁	l ₂	l ₃	l ₄	D	d ₁	d ₂	d ₃	d ₄	SW	T	Fig.	重量 (KGS) Weight
DAT30-A-G	44	24	19	-	-	17	13	9	13	-	14	M12x1.75P	1	0.04
DAT30-B-G	44	24	19	-	-	17	13	9	13	-	14	M12x1.75P	2	0.04
DAT40-A-G	54	26	20	-	-	23	19	14	17	7	19	M16x2.0P	1	0.07
DAT40-A-L-G	54	29	23	-	-	23	19	14	17	7	19	M16x2.0P	1	0.07
DAT40-B-G	54	26	20	27	3	23	19	14	17	7	19	M16x2.0P	2	0.08
DAT40-B-L-G	54	29	23	-	-	23	19	14	17	7	19	M16x2.0P	2	0.08

CAT 研磨螺栓拉頭 CAT HIGH STRENGTH PULL STUD

LEMMA



特點 Feature

- 外徑研磨加工以兩頂心孔做研磨牙級的中心點，減少累計公差，減少偏擺

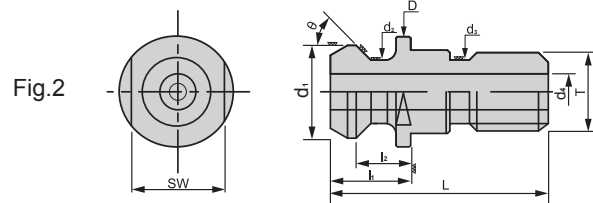
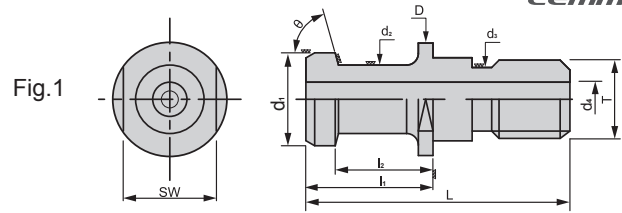
- Grinding the external thread by using the support of two live centers to reduce the accumulated tolerance and runout.

規格 Spec.	L	l ₁	l ₂	D	d ₁	d ₂	SW	T	θ	重量 (KGS) Weight
CAT40-45°-G	57.15	32.15	25.15	23	15	10	19	5/8"W11	45°	0.07
CAT40-60°-G	57.15	32.15	25.15	23	15	10	19	5/8"W11	60°	0.07
CAT40-90°-G	57.15	32.15	25.15	23	15	10	19	5/8"W11	90°	0.07

• 長度單位 Unit of Length (mm)

ISO 研磨螺栓拉頭 ISO HIGH STRENGTH PULL STUD

LEMMA



特點 Feature

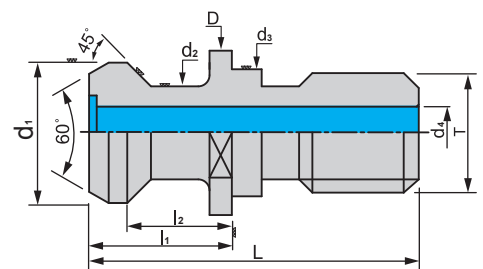
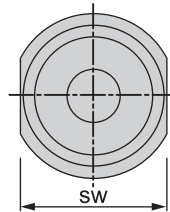
- 外徑研磨加工以兩頂心孔做研磨牙級的中心點，減少累計公差，減少偏擺

- Grinding the external thread by using the support of two live centers to reduce the accumulated tolerance and runout.

規格 Spec.	L	l ₁	l ₂	D	d ₁	d ₂	d ₃	d ₄	SW	T	Fig.	重量 (KGS) Weight
ISO40-A-G	54	26	20	23	19	14	17	7	19	M16x2.0P	1	0.07
ISO40-B-G	44.5	16.4	11.15	22.5	18.95	12.95	17	7.35	19	M16x2.0P	2	0.05
ISO50-A-G	74	34	25	36	28	21	25	11.5	30	M24x3.0P	1	0.20
ISO50-B-G	65.5	25.5	17.95	37	29.1	19.6	25	11.55	30	M24x3.0P	2	0.08

MAZAK 研磨螺栓拉頭 MAZAK HIGH STRENGTH PULL STUD

LEMMA



特點 Feature

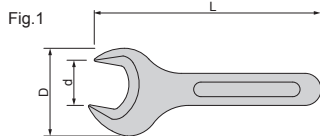
- 外徑研磨加工以兩頂心孔做研磨牙級的中心點，減少累計公差，減少偏擺

- The outer diameter abrasive machining does by two intelligences grinds does a lot of talking the level central poin, reduces the accumulation common difference, reduction beats.

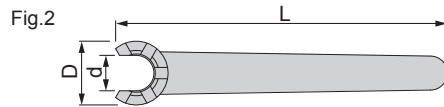
規格 Spec.	L	l ₁	l ₂	D	d ₁	d ₂	d ₃	d ₄	SW	T	重量 (KGS) Weight
MAZAK-BT40-G	44.1	19.1	14	22	18.8	12.45	17	7	19	M16x2.0P	0.05
MAZAK-BT50-G	65.2	25.2	17.58	37	28.95	20.83	25	10	30	M24x3.0P	0.19
MAZAK-CAT40-G	41.1	16.1	11	22	18.8	12.45	17	7	19	M16x2.0P	0.05

• 長度單位 Unit of Length (mm)

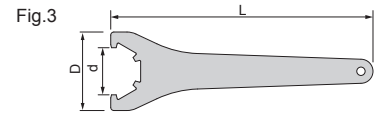
A 型



M 型



UM/RD 及 KM/RD



特點 Feature

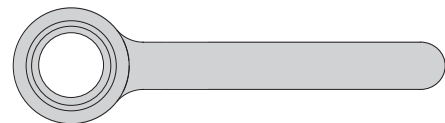
- 材質 SCM-4 鉗口經過熱處理

- Steel:SCM-4

規格 Spec.	螺帽外徑 Nut Dia	L	D	d	重量 (KGS) Weight
ER11-A	19	120	40	17	0.10
ER16-A	28	140	53	25	0.15
ER20-A	34	160	60	30	0.20
ER8-M	12	75	13	8	0.05
ER11-M	16	95	17	11.5	0.04
ER16-M	22	117	22.5	15	0.06
ER20-M	28	129	28.5	19.5	0.07
ER25-M	35	143	36	25	0.09
ER25UM/RD	42	206	65	37	0.22
ER32UM/RD	50	253	75	44	0.30
ER40UM/RD	63	289	90	58	0.50
ER50UM/RD	78	351	110	74	0.90

單向型強力扳手 (ER-M 無風阻螺帽專用)

WRENCH FOR ER-M NON WIND RESISTANCE NUT



特點 Feature

- 適用於 ER-M 無風阻螺帽
- 螺帽鎖緊及開起可達百分之百輕鬆及不易脫落

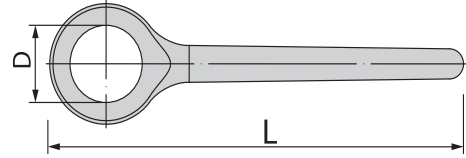
- Applicable ER-M non wind resistance nut.
- Locking nut and opened up to one hundred percent relaxable and not easy to fall off.

規格 Spec.	外徑尺寸	重量 (KGS) Weight
SP-ER8M		0.12
SP-ER11M		0.12

• 長度單位 Unit of Length (mm)



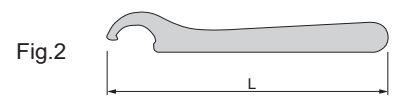
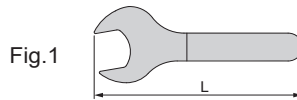
軸承扳手 BEARING WRENCH



規格 Spec.	適用規格 Applicable Spec.	L	D	重量 (KGS) Weight
ER11W-RDQ	SKS6W-RDQ	120	18	0.52
ER16W-RDQ	SKS10W-RDQ、PNER16、UTER16、Pro.E16	170	30	0.52
ER20W-RDQ	SKS13W-RDQ	172	34	0.50
ER25W-RDQ	Pro.E25	175	42	0.47
ER32W-RDQ	PNER32、Pro.E32	180	50	0.50
SKS16W-RDQ	PNER25	175	40	0.43
PNER20-RDQ	PNER20	195	32	0.44
PNER40-RDQ	PNER40	175	40	0.66
UTER20	Pro.E20、UTER20	235	35	0.94



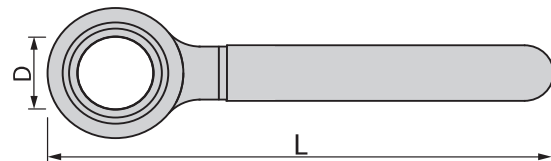
SKS 扳手 SKS HOOK WRENCH



規格 Spec.	適用規格 Applicable Spec.	L	Fig.	重量 (KGS) Weight
SKS6	-	120	1	0.09
SKS10	-	200	2	0.08
SKS13	-	220	2	0.16
SKS16	ER25-HSP-W、MLD-12	220	2	0.20
SKS20	MLD16-W	220	2	0.18
SKS25	-	235	2	0.21



SKS/WH 軸承扳手 (無風阻) SKS/WH BEARING WRENCH (NON WIND RESISTANCE)



規格 Spec.	L	D	重量 (KGS) Weight
SKS6-WH	125	18	0.14
SKS10-WH	160	30	0.23
SKS16-WH	200	40	0.37
SKS25-WH	216	55	0.39

• 長度單位 Unit of Length (mm)

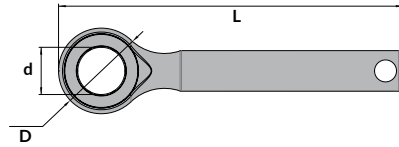
ACCESSORIES



ER-M/WH 軸承扳手 ER-M/WH BEARING WRENCH

適用於走心式機台，外徑縮小，避免干涉

NEW

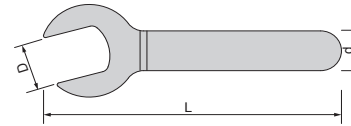


規格 Spec.	L	D	d	重量 (KGS) Weight
ER16M-WH	157	39	22	0.34



ISO 刀桿固定專用扳手 WRENCH FOR ISO COLLET CHUCK

LEMMA

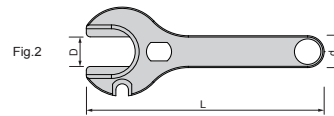
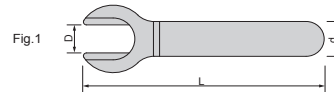


規格 Spec.	L	D	d	重量 (KGS) Weight
ISO20-W	140	24.4	17	-
ISO25-W	160	26	22	0.08
ISO30-W	205	31	35	-



ER-MHG 螺帽專用扳手 WRENCH FOR ER-MHG NUT

LEMMA



規格 Spec.	L	D	d	Fig.	重量 (KGS) Weight
ER16-MHG-W	127	15	17.8	1	-
ER20-MHG-W	160	19	23.5	1	0.14
ER25-MHG-W	180	24	25	2	0.32

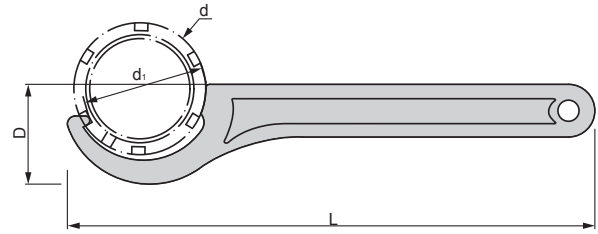
ACCESSORIES

範例 Example

ISO25-W 刀桿固定專用扳手
ISO25-W Collet Chuck Spanner For Fixed



• 長度單位 Unit of Length (mm)



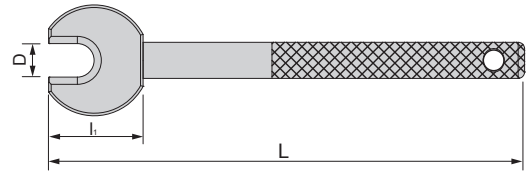
- EOC25 扳手與 MLD25 扳手、MLK25 扳手共用
- EOC32 扳手與 MLC32 扳手共用

- EOC25 and MLD25、MLK25 spanner can be used in common.
- EOC32 and MLD32、MLK32 spanner can be used in common.

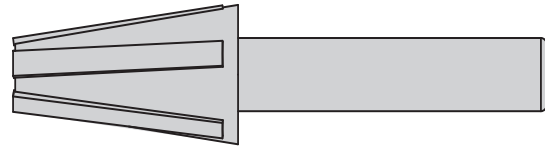
規格 Spec.	使用範圍 Range	L	D	d	d ₁	重量 (KGS) Weight
EOC-25-W	55~60	260	46	60	52	0.30
EOC-32-W	71~75	272	64	80~90	67	0.45



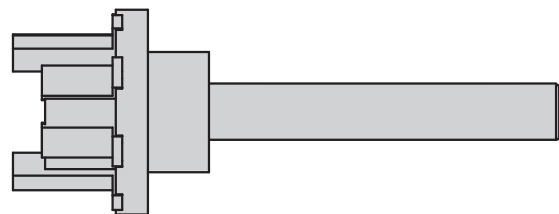
範例 Example



規格 Spec.	L	l ₁	D	重量 (KGS) Weight
PS-BT30	140	25	7.5	0.20
PS-BT40	162	35	11	0.36
PS-BT50	190	40	18	0.48
PS-MAZAK-BT40	185	36	13	0.36
PS-MAZAK-BT50	195	41	20.9	0.44



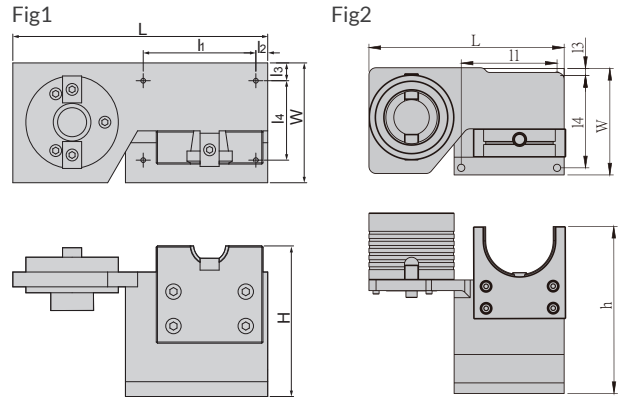
規格 Spec.	斜度 Taper	材質 Material	重量 (KGS) Weight
W30	#30	棉質 Cotton	0.07
W40	#40	棉質 Cotton	0.08
W50	#50	棉質 Cotton	0.19
W30S	#30	羊皮毛 Fleecy	0.07
W40S	#40	羊皮毛 Fleecy	0.08
W50S	#50	羊皮毛 Fleecy	0.19



規格 Spec.	斜度 Rake	重量 (KGS) Weight
HSK40E	HSK40	0.08
HSK50A	HSK50	0.08
HSK63A	HSK63	0.10
HSK100A	HSK100	0.50

BT/CAT/DAT/HSK 鎖刀座

BT/CAT/DAT/HSK TOOL HOLDER TIGHTENING FIXTURE



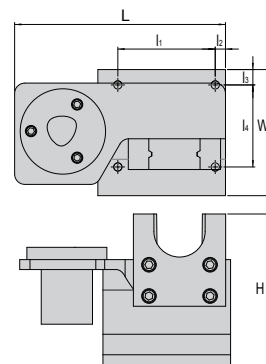
- 不可敲擊 - Don't use hammer.

規格 Spec.	L	l ₁	l ₂	l ₃	l ₄	H	W	Fig	重量 (KGS) Weight
LD-BT30	210	95	10	15	67	130	100	1	4.47
LD-BT40	210	95	10	15	67	130	100	1	3.94
LD-BT50	275	113	20	24	105	200	150	1	7.06
LD-DAT40	210	95	10	15	67	130	100	1	3.94
LD-DAT50	275	113	20	24	105	200	150	1	10.62
LD-CAT40	210	95	10	15	67	130	100	1	3.80
LD-CAT50	275	113	20	24	105	200	150	1	11.4
LD-HSK63A								2	
LD-HSK100A	275	113	105	20	24	200	100	2	16.8

- 本體為鑄鐵 - The body is Cast Iron.

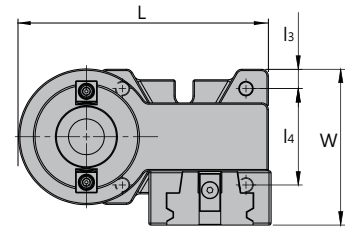
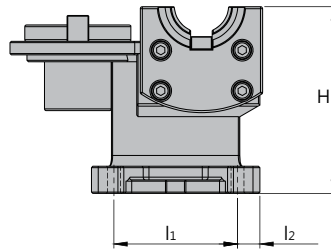
PSC 鎖刀座

PSC TOOL HOLDER TIGHTENING FIXTURE



規格 Spec.	L	l ₁	l ₂	l ₃	l ₄	H	W	重量 (KGS) Weight
LD-PSC32	210	95	10	15	67	143	100	5.26
LD-PSC40	210	95	10	15	67	143	100	5.28
LD-PSC50	210	95	10	15	67	148	100	-
LD-PSC63	210	95	10	15	67	148	100	-

• 長度單位 Unit of Length (mm)



特點 Feature

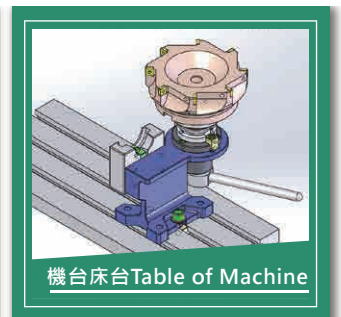
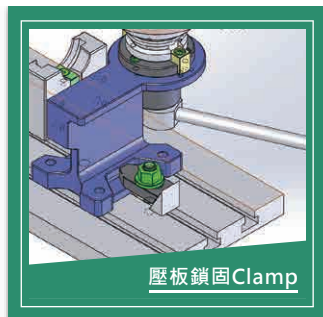
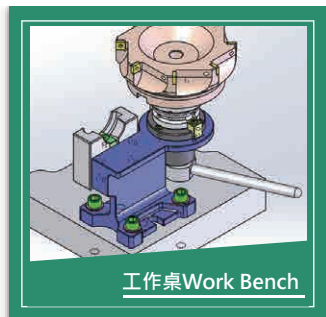
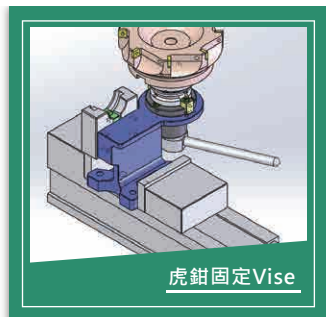
- BT、SBT 刀桿共用

- Compatible with BT and SBT Tool Holder.

規格 Spec.	L	l ₁	l ₂	l ₃	l ₄	H	W	重量 (KGS) Weight
TLT-B30	186	91	16.5	14.25	71	137.5	110	4.36
TLT-B40	186	91	16.5	14.25	71	137.5	110	4.38
TLT-B50	242	116	-	-	112	195.5	162.5	10.90

鎖刀座比較表 Comparison Table

項目 Item	一般型 General Type	加強型 Enhanced Type
使用刀桿 Usage Tool Holder	BT 刀桿 BT Tool Holder	BT、SBT 雙面拘束刀桿 Both BT and SBT Tool Holder
懸伸長重量重刀桿 使用穩定性 Stability with Long Length and Heavy Chuck	一般易晃 Ordinary	優、穩固 More Powerful and Superior
固定方式 Able to Fixed on/with	僅固定工作桌 Work Bench	四種固定方式 1. 虎鉗固定 Vise 2. 工作桌 Work Bench 3. 壓板鎖固 Clamp 4. 機台床台 Table of Machine



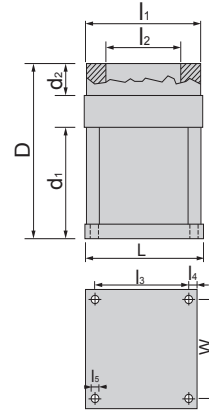
• 長度單位 Unit of Length (mm)

HSK/BT/DIN 無鍵槽鎖刀座

HSK/BT/DIN TOOL HOLDER TIGHTENING FIXTURE



- 不可敲擊 - Don't use hammer.



特點 Feature

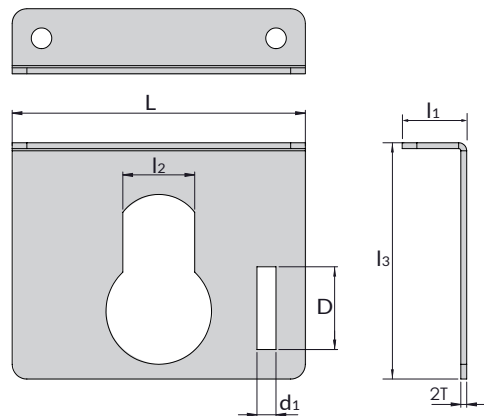
- HSK 有無鍵槽共用

- HSK

規格 Spec.	L	l ₁	l ₂	l ₃	l ₄	l ₅	D	d ₁	d ₂	W	重量 (KGS) Weight
HD-HSK32I	100	80	32	84	8	7	141	89	27	84	2.95
HD-HSK40I	100	80	40	84	8	7	141	89	27	84	2.80
HD-HSK50I	100	95	50	84	8	7	147	89	33	84	3.00
HD-HSK63I	100	96.5	63	84	8	7	139	89	25	84	2.90
HD-BT30I	100	95	46	84	8	7	142	89	28	84	3.00
HD-DIN30I	100	95	50	84	8	7	137	89	23	84	3.10

ISO 鎖刀座

ISO TOOL HOLDER TIGHTENING FIXTURE

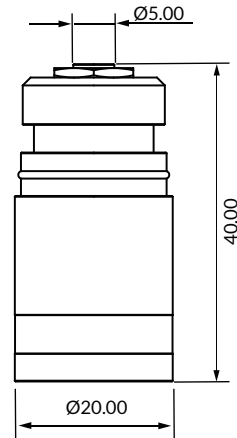


範例 Example



規格 Spec.	L	l ₁	l ₂	l ₃	D	d ₁	重量 (KGS) Weight
LD-ISO20	100	22	24.5	80	28	6.5	-
LD-ISO25	100	22	27	80	28	6.5	-
LD-ISO30	100	22	42	10	28	6.5	-

• 長度單位 Unit of Length (mm)



特點 Feature

- 重複定位精度 $\pm 0.001\text{mm}$
- 高度公差 0.005mm
- 磁性底座設計，可吸附工件探測
- 最小可量測 0.01mm 刀具
- 防護等級 IPX6、IPX7

- Re-positioning accuracy $\pm 0.001\text{mm}$.
- Height tolerance in 0.005 mm .
- Magnetic base design for absorbing workpiece to probe.
- Minimum measurable 0.01mm cutting tool.
- IP protection grade IPX6、IPX7.

注意事項 Notice

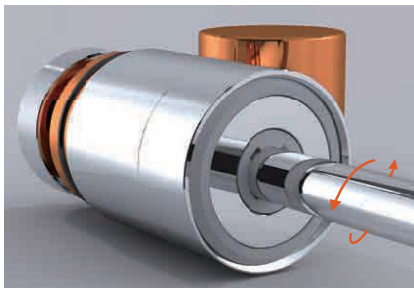
- 使用 SR44 或 LR44 1.5V 電池 2 枚，可連續使用 200 小時，使用前注意電力是否充足。
- 量測壓力值為 1.0 N.m ，不適用一般量具檢測精度

- 2 pieces battery (SR44/LR44), battery life up to 200 hours, please check the battery if it's sufficient before use.
- The measured pressure value is 1.0 N.m , which is not applicable to the general gauge detection accuracy.

規格 Spec.	型式 NO.	總高度 H	伸縮距離 Telescopic distance	重量 (KGS) Weight
ZMP - 40	光電式 Optical type	40	2	0.1

電池更換方式

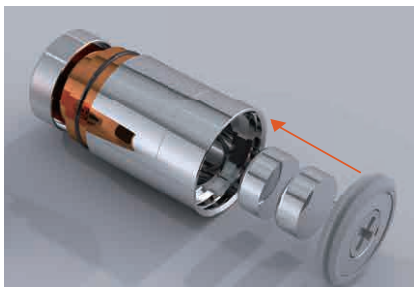
Battery exchange instructions



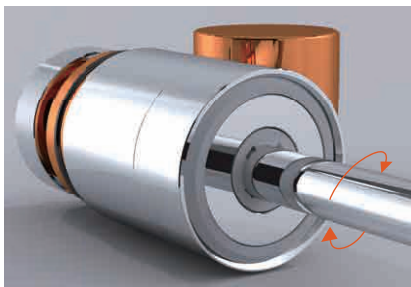
1. 使用十字螺絲起子將電池蓋逆時針轉開。
Open the battery cover by using a cross screwdriver.(counterclockwise)



2. 轉開電池蓋，準備兩顆 SR44 或 LR44 1.5V 電池。
Once the cover is opened, exchange two battery (Battery model: SR44 or LR44 1.5v)



3. 將兩顆電池放入，並蓋上電池蓋。
Install the new battery.



4. 使用十字螺絲起子將電池蓋順時針鎖緊。
Lock the battery cover by using a cross screwdriver. (clockwise)



• 長度單位 Unit of Length (mm)


 高度 50
height

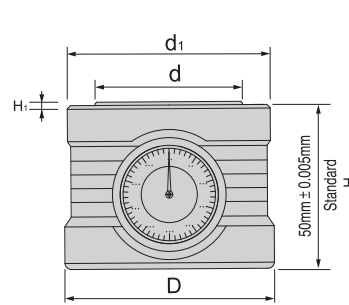
 高度 100
height


Fig.1

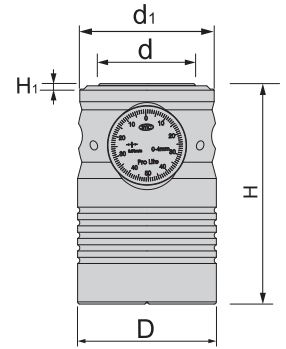


Fig.2

特點 Feature

- 高精密度、高準確度、高便利性
- 測量接觸面積大，以利測量作業

- High precision, high accuracy, high convenience.
- The measuring contacting wide area, in order to help the gauge work.

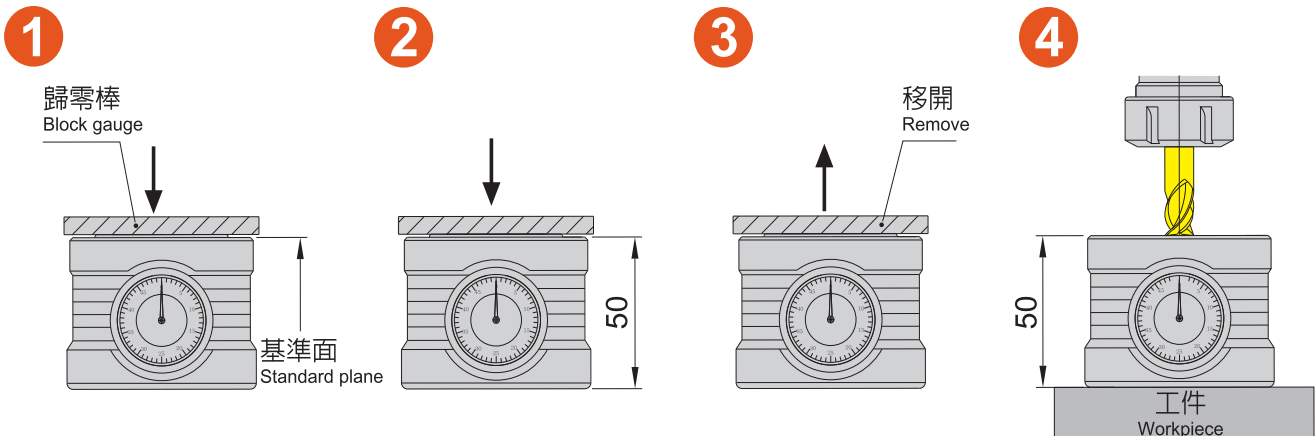
規格 Spec.	D	d	d ₁	H ±0.005	H ₁ 有效行程 Stroke	歸零棒 Block gauge	重量 (KGS) Weight
ZDS-50J	64	44.7	62	50	2	Ø16	1.35
ZDS-50J-N	64	44.7	62	50	2	Ø16	1.35
ZSW-100	64	44.7	62	100	2	Ø16	-

- ZDS-50J-N 為無磁性 - ZDS-50J-N is non-magnetic.

範例 Example

- 請使用歸零棒，下壓至基準面
- 轉開百分錶使錶針歸零
- 移開歸零棒
- 置於工件上，刀具接觸探測面，請慢速進刀至錶針指在 "0"
· 則刀具與工件的距離是 50

- Please use the block gauge to press datum level.
- Turn the dialgauge and adjust the needle to "0".
- Remove the block gauge.
- Put the whole unit on the workpiece, when cutter touched the test surface please feed slowly to move the needle to "0".
The cutter distance is now 50mm above the workpiece.

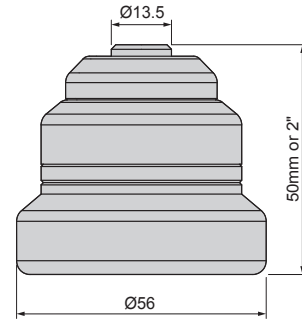


• 長度單位 Unit of Length (mm)



ZOP-50 光電式 Z 軸設定器

ZOP-50 Z AXIAL PRESET GAUGE(OPTICAL TYPE)



特點 Feature

- 精度 0.005mm
- 磁性底座設計，可供側面吸附工件探測
- 紅燈亮時，四週都可看見，沒有死角

- Accuracy 0.005mm.
- With magnetic base, available for adsorption side workpiece probe.
- When the red lamp on, you can sweep it with non blind spot.

注意事項 Notice

- 使用 AG13 水銀電池 2 枚
- 磁性底座請勿接近 100°C 以上熱氣或火氣，以防消磁
- 探測面下方有微調機構，調整高度請用平行塊規比測
- 高精度產品，不適用游標尺檢測精度
- 快速進刀至燈亮時，請輕微後退至燈熄，再慢速前進至燈亮，以利確實掌握精度
- 側面探測時，請用刀刃之最高點拉觸探測面

- Uses AG13 clark cell 2.
- Magnetic base should avoid to approach the heat or steam above 100°C, to prevent demagnetization.
- There's micro-adjustment under test surface, please use parallel block for adjusting height.
- High precision products, not suitable for vernier scale to test precision.
- When the light is on due to fast feed cutter, please draw back slightly until the light is off, then go forward slowly until the light is on, for controlling precision indeed.
- When probing side, please use the apogee of the cutter to touch the test surface.

規格 Spec.	型式 NO.	總高度 H	伸縮距離	重量 (KGS) Weight
ZOP-50	光電式	50	3	0.5



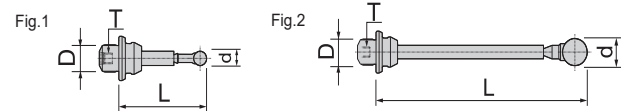
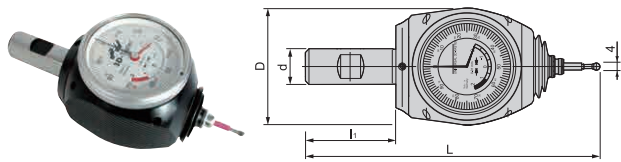
三次元探測器

3D MASTER



探針

PROBE

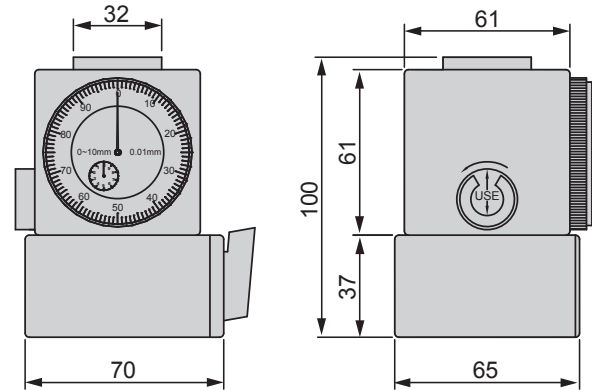


規格 Spec.	L	l ₁	D	d	重量 (KGS) Weight
3D-D	163	50	65	20	0.94

規格 Spec.	L	D	d	T	Fig.	重量 (KGS) Weight
台製 SYIC-TB-427(短針)	25	7.5	4	M3	1	0.02
台製 SYIC-TB-869(長針)	65	7.5	8	M3	2	0.02
進口 3D-S(短針)	25	7.5	4	M3	1	0.02
進口 3D-L(長針)	65	7.5	8	M3	2	0.02

ACCESSORIES

• 長度單位 Unit of Length (mm)



特點 Feature

- 高度 100mm · 計算容易
- 探測面橢圓形 · 加大使用面積
- 0.01mm 大錶面設計 · 視覺輕鬆
- 底座含磁性 · 有調整 ON-OFF 開關設計
- 到達定位點時 · 大錶、小錶同時顯示 "0"
- 可利用歸零桿 · 進行高度調整

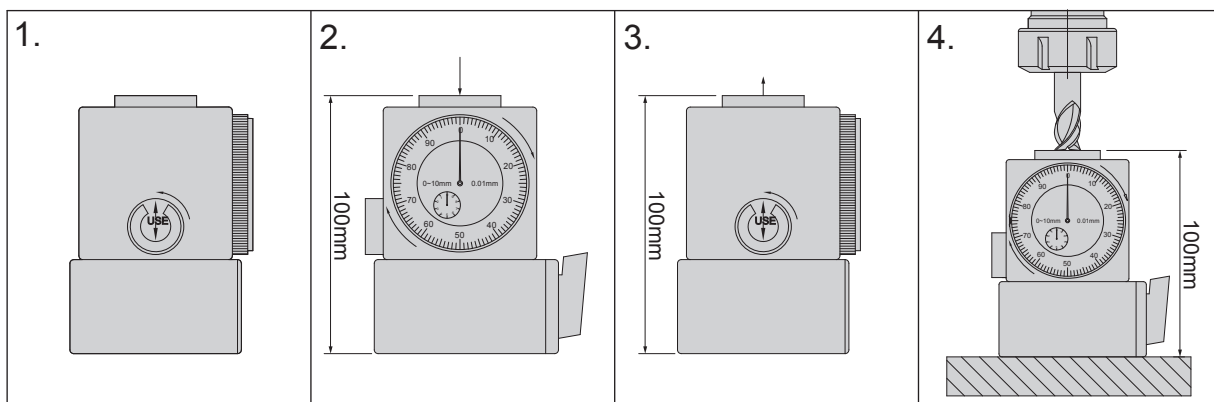
- Height 100mm, easy to calculate.
- Oval test surface, extending using area.
- Big clockface design, easy to read.
- Magnetic base with ON-OFF switch is designed for adjustment.
- The design in a direct way returns to zero by reaching the anchor point.
- Uses zero level to adjust height.

注意事項 Notice

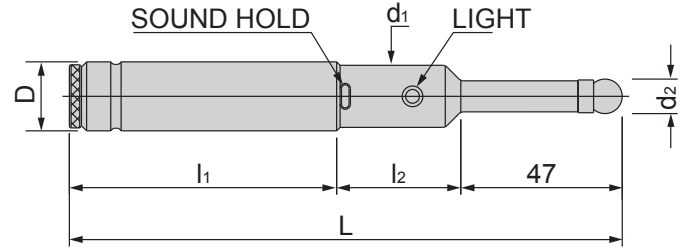
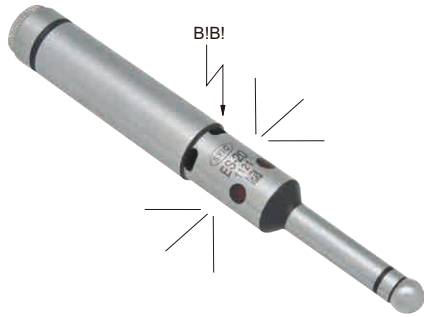
- 將歸零桿轉至 TEST
- 用手下壓至盡頭 · 小錶會顯示 "0" · 請將大錶 "0" 旋轉至對準大指針
- 使用前請將歸零桿旋轉至 "USE"
- 置於工件上 · 將磁性座旋轉至 "ON" · 刀具接觸探測面 · 請慢速進刀至大錶 · 小錶指針同時到 "0" 時 · 則刀具與工件的距離是 100mm

- Rotate the wheel on the side of the unit for the setting-zero point form "USE" to "TEST".
- Press down the gauge at the top of the unit, until the small indicator needle point to zero. Keep pressure against it and then adjust the large indicator needle to zero.
- Rotate the button at the side of the unit form to "USE".
- Introduce the tool to the top of the unit until both dial indicator gauges reach zero, the cutter distance is now 100mm above the workpiece.

規格 Spec.	型式 NO.	總高度 H	伸縮距離 Telescopic distance	重量 (KGS) Weight
ZDI - 100	量錶式	100	3	2.24



精度 Accuracy : 0.005mm



特點 Feature

- 每支產品都附有精度檢驗報告書
- 紅燈亮起同時發出電子音嗶！嗶！聲響
- 無法目視之探孔深測，可由聲響得知探測結果

- Each product comes with a precision inspection report
- It will beep at the same time when the red light lit up.
- When probe is in a deep hole you can't see the red light, but you can hear the sound.

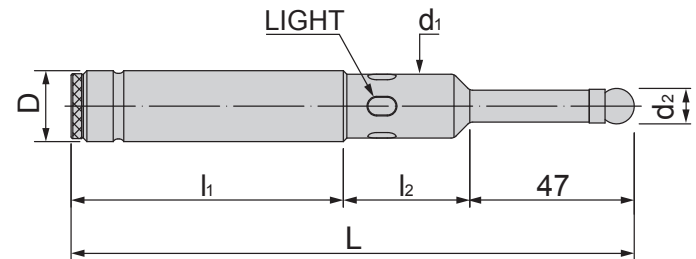
注意事項 Notice

- 附 2 枚 UM5#1.5V · 鹼性乾性電池

- With two UM5 # 1.5V, alkaline dry batteries.

規格 Spec.	L	l ₁	l ₂	D	d ₁	d ₂	重量 (KGS) Weight
ES-20	160	79	41	20	18	10	0.35
ES-32	160	79	41	32	18	10	0.60

精度 Accuracy : 0.005mm



特點 Feature

- 接觸時紅光閃耀，降低視覺誤差
- 附精度檢驗表及使用說明

- When contact, red light shine to reduce parallax.
- With accuracy test sheet and instructions for use.

注意事項 Notice

- 不可迴轉量測
- 附 2 枚 UM5#1.5V · 鹼性乾性電池

- Non-rotating measurement.
- With two UM5 # 1.5V, alkaline dry batteries.

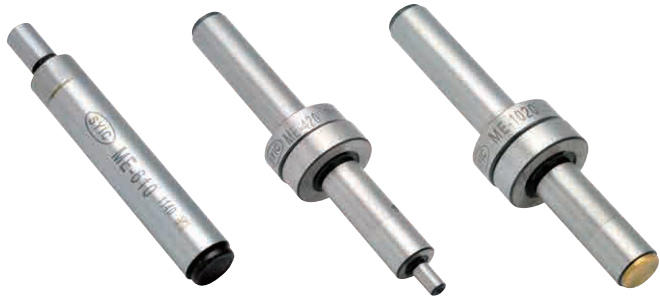
規格 Spec.	L	l ₁	l ₂	D	d ₁	d ₂	重量 (KGS) Weight
OP-20	160	79	34	20	18	10	0.30
OP-32	160	79	34	32	18	10	0.60

• 長度單位 Unit of Length (mm)



偏心式尋邊器 ME MECHANICAL ENGE FINDER

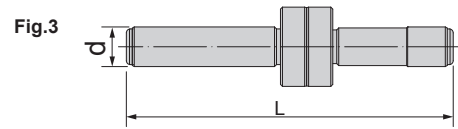
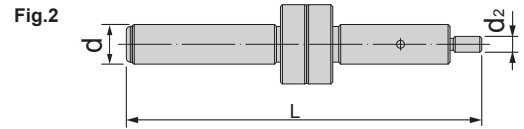
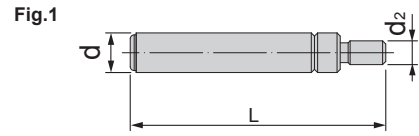
精度 Accuracy : 0.002mm



ME-610

ME-420

ME-1020



特點 Feature

- ME420 特別設計 4mm 測頭 · 提供小孔徑及偏窄溝槽測量使用
- 配合轉速 400~600rpm.
- MIN.(4mm) can be tested mini hole for your workpiece.
- Within 400-600rpm.

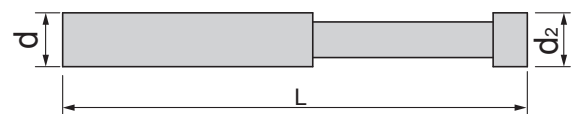
規格 Spec.	L	d	d ₂	Fig.	重量 (KGS) Weight
ME - 610	65	10	Ø6	1	0.03
ME - 420	90	10	Ø4	2	0.06
ME - 1020	82.8	10	Ø10	3	0.06



CME 偏心式尋邊器 CME MECHANICAL ENGE FINDER

精度 Accuracy : 0.002mm

LEMMA



特點 Feature

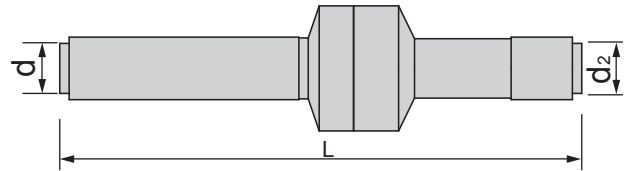
- 配合轉速 400~600rpm
- 陶瓷測頭不導磁
- Within 400-600rpm.
- Non-magnetic ceramic side head.

規格 Spec.	L	d	d ₂	重量 (KGS) Weight
CME - 1010	86	10	Ø10	0.04

• 長度單位 Unit of Length (mm)

ACCESSORIES

精度 Accuracy : 0.002mm



特點 Feature

- 配合轉速 400~600rpm
- 陶瓷測頭不導磁

- Within 400-600 rpm.
- Non-magnetic ceramic side head.

規格 Spec.	L	d	d ₂	重量 (KGS) Weight
CME - 1020	90	10	Ø10	0.08

精度 Accuracy : 0.005mm

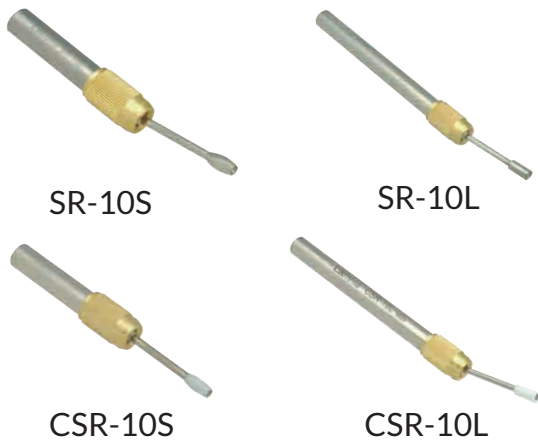


Fig.1

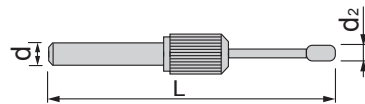


Fig.2



特點 Feature

- 配合轉速 800~1000rpm
- 陶瓷測頭不導磁

- Within 800-1000rpm.
- Non-magnetic ceramic side head.

規格 Spec.	L	d	d ₂	Fig.	重量 (KGS) Weight
SR-10S (單支)	95	Ø10	Ø5	1	0.06
SR-10L (單支)	145			2	0.09
SR-10T	整組 (2支裝) A set (two pieces)				0.27
CSR-10S (單支)	95	Ø10	Ø5	1	0.04
CSR-10L (單支)	145			2	0.08
CSR-10T	整組 (2支裝) A set (two pieces)				0.26

• 長度單位 Unit of Length (mm)



HME 超硬膜偏心式尋邊器

HME MECHANICAL EDGE FINDER

精度 Accuracy : 0.002mm



HME-1020

HME-420

Fig.1

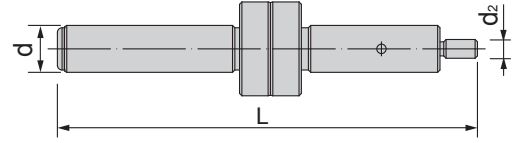
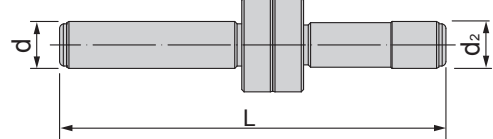


Fig.2



特點 Feature

- 絕不產生磁性
- 探測端硬度 >HRC60°
- 配合轉速 400~600rpm

- No magnetism.
- Test end degree of hardness >HRC60°
- Within 400-600rpm.

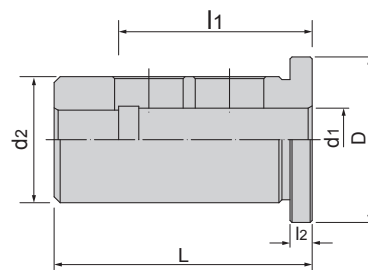
規格 Spec.	L	d	d ₂	Fig.	重量 (KGS) Weight
HME-420	90	10	Ø4	1	0.04
HME-1020	82.5	10	Ø10	2	0.04



BT/OSL 側固式油路刀把套筒

BT/OSL STRAIGHT SLEEVE FOR SIDE-LOCK OIL HOLDER

TYPE BC



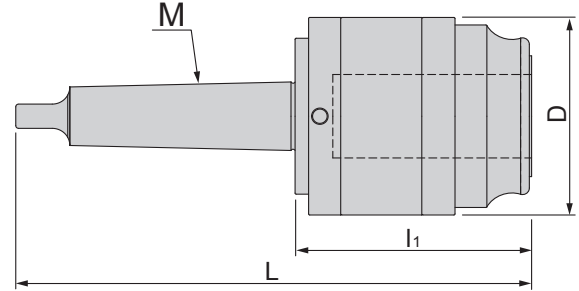
規格 Spec.	L	l ₁	l ₂	D	d ₁	d ₂	重量 (KGS) Weight
OSL-20-16	54	48	5.5	30	16	20	0.07
OSL-25-16	60	48	5.5	35	16	25	0.19
OSL-25-20	60	56	5.5	35	20	25	0.15
OSL-32-16	64	48	5.5	42	16	32	0.35
OSL-32-20	64	56	5.5	42	20	32	0.32
OSL-32-25	64	56	5.5	42	25	32	0.22
OSL-40-16	74	48	5.5	50	16	40	0.57
OSL-40-20	74	60	5.5	50	20	40	0.54
OSL-40-25	74	60	5.5	50	25	40	0.45
OSL-40-32	74	60	5.5	50	32	40	0.30

• 長度單位 Unit of Length (mm)

ACCESSORIES



TP/DT33 鑽床攻牙器 TP/DT33 DRILL TAPPER



特點 Feature

- 攻牙本體有調整扭力之功能，可依客戶攻牙需求作扭力強 (H) 和弱 (L) 之調整操作
- 攻牙能力 :M5~M36

- Tapping body have the function of torque adjustment, may adjust the torque by strong (H) and weak (L) attached customer needs.
- Tapping capacity: M5~M36.

規格 Spec.	L	l ₁	D	M	重量 (KGS) Weight
DT33-MT3	200	104	90	MT3	3.15
DT33-MT4	228	104	90	MT4	3.48
DT33-MT5	254	104	90	MT5	4.38



鑽床攻牙器套裝組 DRILL TAPPER SET

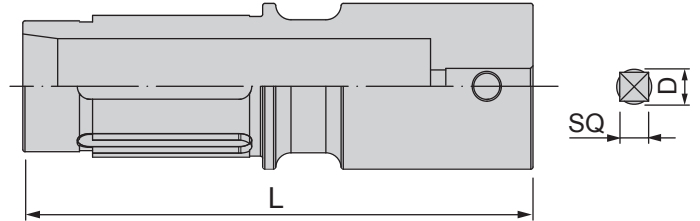


規格 Spec.	內容物 Contents				重量 (KGS) Weight
	本體 Tapper Holder	絲攻筒夾 Tapping Collet	斜柄筒夾 Tapping Collet	鑽夾頭筒夾 Drill chuck Collet	
DT33-MT3-9P-SET	TP-MT3T	M6~M36 W1/4~W1-1/8 PT1/8~PT1-1/8 (可選配六只)	DT33-TPC-MT1 DT33-TPC-MT2 DT33-TPC-MT3 DT33-TPC-MT4 (可選配二只)	DT33-TPC-JT6	-
DT33-MT4-9P-SET	TP-MT4T				-
DT33-MT5-9P-SET	TP-MT5T				-

• 長度單位 Unit of Length (mm)

DT33 絲攻筒夾

DT33 TAPPING COLLET

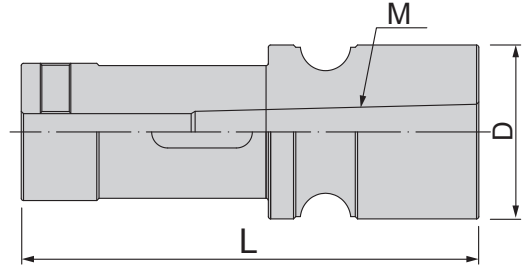


規格 Spec.	公制 (mm)	英制 (inch)	英制 (inch)	PT	PS	PF	L	直徑 Ø D	四角柄 SQ	重量 (KGS) Weight
DT33-TPC-M6.U1/4.W1/4	M6	U1/4	W1/4	-	-	-	117	6	4.5	0.57
DT33-TPC-U5/16.W5/16	-	U5/16	W5/16	-	-	-	117	6.1	5	0.57
DT33-TPC-M8.M7	M8 M7	-	-	-	-	-	117	6.2	5	0.57
DT33-TPC-M9.M10.U3/8.W3/8	M9 M10	U3/8	W3/8	-	-	-	117	7	5.5	0.57
DT33-TPC-M11.U7/16.W7/16. PT7/8.PT1/8	M11	U 7/16	W7/16	1/8	1/8	1/8	117	8	6	0.57
PT7/8.PT1/8	M11	U7/16	W7/16	1/8	1/8	1/8	117	8	6	0.57
DT33-TPC-M12	M12	-	-	-	-	-	117	8.5	6.5	0.57
DT33-TPC-U1/2.W1/2	-	U1/2	W1/2	-	-	-	117	9	7	0.57
DT33-TPC-M14.M15.U9/16.W9/16	M14 M15	U9/16	W9/16	-	-	-	117	10.5	8	0.57
DT33-TPC-PT1/4.PS1/4.PF1/4	-	-	-	1/4	1/4	1/4	117	11	9	0.57
DT33-TPC-U5/8.W5/8	-	U5/8	W5/8	-	-	-	117	12	9	0.57
DT33-TPC-M16	M16	-	-	-	-	-	117	12.5	10	0.57
DT33-TPC-M18.U3/4.W3/4.PT3/8	M18	U3/4	W3/4	3/8	3/8	3/8	117	14	11	0.57
DT33-TPC-M20	M20	-	-	-	-	-	117	15	12	0.57
DT33-TPC-M22.U7/8.W7/8	M22	U7/8	W 7/8	-	-	-	117	17	13	0.57
DT33-TPC-PT1/2.PS1/2.PF1/2	-	-	-	1/2	1/2	1/2	117	18	14	0.57
DT33-TPC-M24.M25.PT5/8	M24 M25	-	-	-	-	5/8	117	19	15	0.57
DT33-TPC-M26.M27.U1.W1	M26 M27	U1	W1	-	-	-	117	20	15	0.57
DT33-TPC-M28	M28	-	-	-	-	-	117	21	17	0.57
DT33-TPC-M29.W1-1/8	-	U1-1/8	W1-1/8				117	22	17	0.57
DT33-TPC-M30.PT3/4	M30	-	-	3/4	3/4	3/4	117	23	17	0.57
DT33-TPC-M32.U11/4	M32	U1-1/4	W1-1/4	-	-	7/8	117	24	19	0.57
DT33-TPC-M33	M33	-	-	-	-	-	117	25	19	0.57
DT33-TPC-M34.M35.U13/8.PT1	M34 M35	U1-3/8	W1-3/8	1	1	1	117	26	21	0.57
DT33-TPC-M36.M38.PT1-1/8	M36 M38	-	-	-	1-1/8	1-1/8	117	28	21	0.57



DT33 斜柄筒夾

MORSE TAPER COLLET

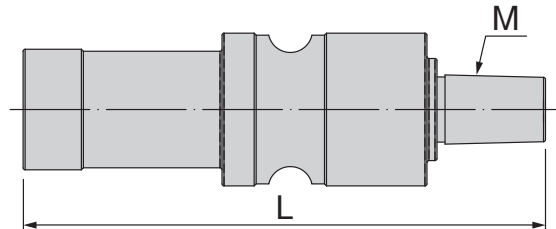


規格 Spec.	L	D	M	重量 (KGS) Weight
DT33-TPC-MT1	100	38	MT1	0.62
DT33-TPC-MT2	110	38	MT2	0.62
DT33-TPC-MT3	122	38	MT3	0.60
DT33-TPC-MT4	170	38	MT4	0.66

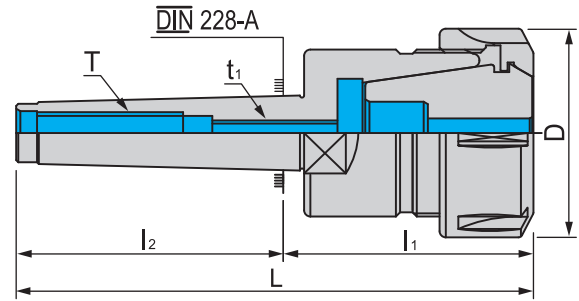


DT33 鑽夾頭筒夾

DT33 DRILL CHUCK COLLET



規格 Spec.	L	M	重量 (KGS) Weight
DT33-TPC-JT6	130	JT6	0.74



特點 Feature

MTB=MK

- MTB 加棒舌即為 MTA

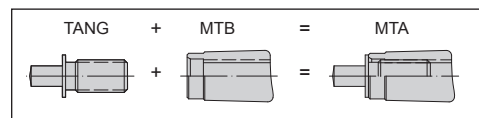
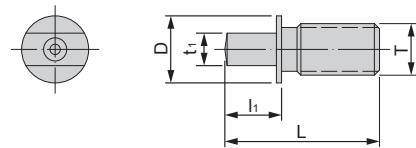
- 訂購前請確認本體拉桿牙數為公制或英制

MTB=MK

- MTB + TANG = MTA

- Please inform DRAW BAR'S size when purchasing holder.

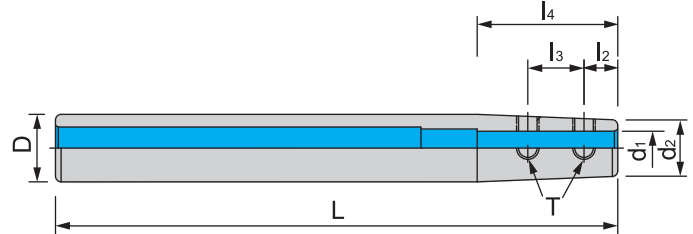
規格 Spec.	L	l ₁	l ₂	D	t ₁	T	重量 (KGS) Weight
MTB2xER20A-52	116	52	64	35	M10x1.5P	M10x1.5P, 3/8"W16	0.45
MTB2xER25-55	119	55	64	42	M10x1.5P	M10x1.5P, 3/8"W16	0.50
MTB3xER25-55	136	55	81	42	M12x1.75P	M12x1.75P, 1/2"W12	0.60
MTB3xER32-60	141	60	81	50	M12x1.75P	M12x1.75P, 1/2"W12	0.80
MTB3xER40-70	151	70	81	63	M12x1.75P	M12x1.75P, 1/2"W12	1.30
MTB4xER32-60	162.5	60	102.5	50	M16x2.0P	M16x2.0P, 5/8"W11	0.95
MTB4xER40-70	172.5	70	102.5	63	M16x2.0P	M16x2.0P, 5/8"W11	1.50



規格 Spec.	L	l ₁	D	T	t ₁	重量 (KGS) Weight
MT2x3/8"W16	30	7	13	3/8"W16	6.3	0.02
MT2xM10x1.5P	30	7	13	M10x1.5P	6.3	0.02
MT3x1/2"W12	40	12	18	1/2"W12	7.8	0.04
MT3xM12x1.75P	40	12	18	M12x1.75P	7.8	0.04

規格 Spec.	L	l ₁	D	T	t ₁	重量 (KGS) Weight
MT4x5/8"W11	46	13	25	5/8"W11	11.9	-
MT4xM16x2.0P	46	13	25	M16x2.0P	11.9	-
MT5x1"W8	47	14	35	1"W8	15.9	-
MT5xM24x3.0P	47	14	35	M24x3.0P	15.9	-

• 長度單位 Unit of Length (mm)



特點 Feature

- 材質採用抗震性優越的鎳鉻鋁合金鋼
- 孔徑差 H5

-Steel : SNCM-220
- d1 is H5.

規格 Spec.	L	l ₂	l ₃	l ₄	D	d ₁	d ₂	T	重量 (KGS) Weight
C8-SL03-110	110	6	10	25	8	3	7.5	M3x0.5P-3L	0.08
C8-SL04-110	110	6	10	25	8	4	8	M3x0.5P-3L	0.08
C10-SL03-150	150	6	10	25	10	3	9	M3x0.5P-3L	0.11
C10-SL04-150	150	6	10	25	10	4	9	M4x0.7P-3L	0.08
C10-SL06-150	150	6	10	25	10	6	-	M4x0.7P-3L	0.10
C12-SL04-150	150	6	10	25	12	4	9	M4x0.7P-3L	0.13
C12-SL06-150	150	6	10	25	12	6	10	M4x0.7P-3L	0.12
C16-SL04-150	150	6	10	25	16	4	10	M4x0.7P-4L	0.22
C16-SL04-200	200	6	10	25	16	4	10	M4x0.7P-4L	0.18
C16-SL06-150	150	6	10	25	16	6	13	M4x0.7P-3L	0.20
C16-SL06-200	200	6	10	25	16	6	13	M4x0.7P-4L	0.25
C16-SL08-150	150	6	10	25	16	8	15	M4x0.7P-3L	0.15
C16-SL08-200	200	6	10	25	16	8	15	M4x0.7P-4L	0.21
C20-SL06-150	150	6	10	25	20	6	13	M4x0.7P-4L	0.29
C20-SL06-200	200	6	10	25	20	6	13	M4x0.7P-4L	0.38
C20-SL08-150	150	6	10	25	20	8	15	M6x1.0P-4L	0.29
C20-SL08-200	200	6	10	25	20	8	15	M6x1.0P-6L	0.38
C20-SL10-150	150	6	10	25	20	10	17	M6x1.0P-6L	0.27
C20-SL10-200	200	6	10	25	20	10	17	M6x1.0P-4L	0.34
C20-SL12-150	150	6	10	25	20	12	19	M6x1.0P-4L	0.18
C20-SL12-200	200	6	10	25	20	12	19	M6x1.0P-6L	0.28
C32-SL06-150	150	6	10	25	32	6	13	M6x1.0P-8L	0.21
C32-SL08-150	150	6	10	25	32	8	15	M6x1.0P-6L	0.21
C32-SL10-150	150	6	10	25	32	10	17	M6x1.0P-8L	0.22
C32-SL12-150	150	6	10	25	32	12	19	M6x1.0P-5L	0.22

直柄ER自動車床夾頭柄系統化示意圖

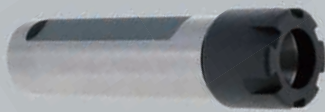
ER Collet Chuck For Automatic Lathe (Straight Shank) Combination

刀桿
Holder

筒夾
Chuck

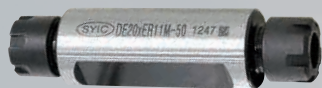
螺帽
Nut

扳手
Wrench



小徑 / 直柄 ER 夾頭柄(M型)
ER Collet Chuck For Automatic Lathe
(Straight Shank)

C20-ER16M-60



DE直柄兩端ER自動車床夾頭柄
ER Collet Chuck For Automatic Lathe
(Double-Ended Straight Shank)

DE20-ER16M-75



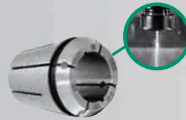
ER彈性筒夾
ER Collet



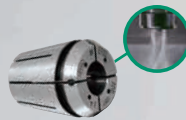
ER彈性筒夾(A級)
ER Collet (A Grade)



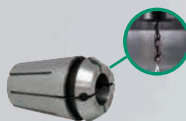
ER彈性筒夾(UP級)
ER Collet (UP Grade)



ER-FID出水筒夾
ER-FID Coolant Collet



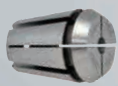
ER-FOD出水筒夾
ER-FOD Coolant Collet



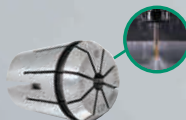
ER-EO止水筒夾
ER-EO Sealed Collet



ER-ES斜槽止水筒夾
ER-ES Steel Sealed Collet



ER鋼性攻牙筒夾
ER-TC Rigid Tap Collet



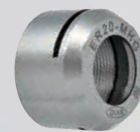
ER鋼性攻牙止水筒夾
ER-TC Rigid Tap Sealed Collet



ER-M型螺帽
ER-M Nut

尺寸規格Spec.

ER8.ER11.ER16
ER20.ER25



ER-MHG螺帽
ER-MHG Nut

尺寸規格Spec.

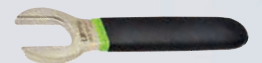
ER16-MGH.ER20-MGH
ER25-MGH



ER-M標準扳手
ER-M Wrench



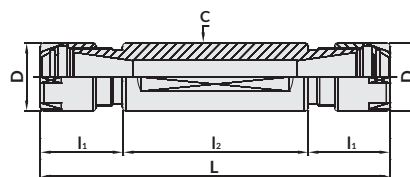
M-LH 螺帽扳手
(扭力扳手用)
M-LH Nut Torque Wrench



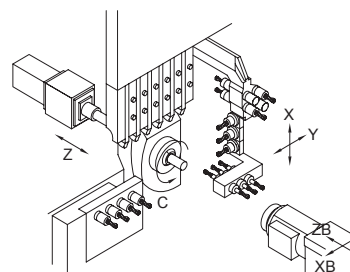
ER-MHG螺帽專用扳手
ER-MHG Nut Wrench

直柄兩端 ER 自動車床夾頭柄

ER COLLET CHUCK FOR AUTOMATIC LATHE (DOUBLE-ENDED STRAIGHT SHANK)



範例 Example



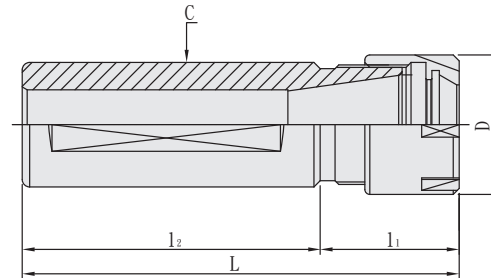
特點 Feature

-整支通孔

規格 Spec.	L	l ₁	l ₂	C	D	重量 (KGS) Weight
DE20-ER11M-30T	63.2	16.6	30	20	16	0.09
DE20-ER11M-50T	83.2	16.6	50	20	16	0.12
DE20-ER11M-75T	108.2	16.6	75	20	16	0.12
DE20-ER16M-50T	103.2	26.6	50	20	22	0.10
DE20-ER16M-55T	108.2	26.6	55	20	22	0.12
DE20-ER16M-75T	128.2	26.6	75	20	22	0.12
DE22-ER11M-60T	93.2	16.6	60	22	16	0.12
DE22-ER11M-100T	133.2	16.6	100	22	16	0.14
DE22-ER16M-55T	108.2	26.6	55	22	22	0.17
DE22-ER16M-60T	113.2	26.6	60	22	22	0.14
DE22-ER16M-75T	128.2	26.6	75	22	22	0.21
DE22-ER16M-100T	153.2	26.6	100	22	22	0.16
DE23-ER11M-60T	93.2	16.6	60	23	16	0.16
DE23-ER11M-100T	133.2	16.6	100	23	16	0.18
DE23-ER16M-60T	113.2	26.6	60	23	22	0.20
DE23-ER16M-100T	153.2	26.6	100	23	22	0.21
DE25-ER16M-62T	115.2	26.6	62	25	22	0.23

• 使用 ER-M/WH 軸承扳手 ER/WH Wrench

• 長度單位 Unit of Length (mm)



特點 Feature

-整支通孔 -Through hole

規格 Spec.	L	l ₁	l ₂	C	D	重量 (KGS) Weight
C20 - ER11M - 60	76.6	16.6	60	20	16	0.14
C20 - ER16M - 60	84.6	24.6	60	20	22	0.14
C22 - ER11M - 60	76.6	16.6	60	22	16	0.26
C22 - ER16M - 60	84.6	24.6	60	22	22	0.28
C23 - ER11M - 60	76.6	16.6	60	23	16	0.30
C23 - ER16M - 60	86.6	26.6	60	23	22	0.32
C25 - ER20M - 60	88	28	60	25	28	0.22



Fig.1

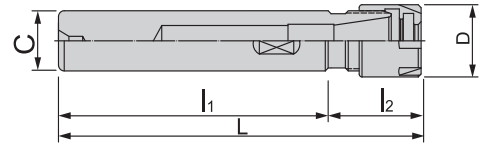
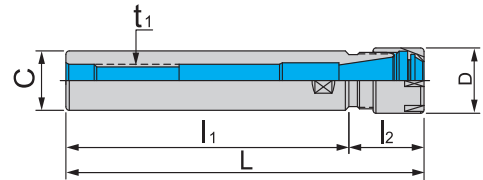
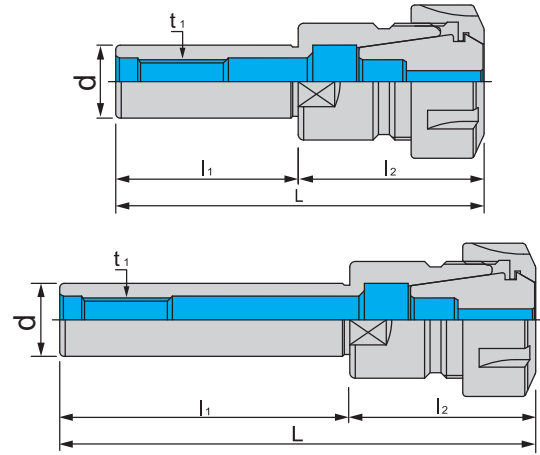


Fig.2



規格 Spec.	L	l ₁	l ₂	C	D	t ₁	Fig.	重量 (KGS) Weight
C8xER8M-55	78.2	55	23.2	8	12	-	1	0.05
C10xER8M-100	116.2	100	16.2	10	12	-	1	0.08
C10xER8M-150	166.2	150	16.2	10	12	-	1	0.12
C10xER8M-180	196.2	180	16.2	10	12	-	1	0.14
C12xER8M-55	71.2	55	16.2	12	12	-	1	0.06
C12xER8M-120	136.2	120	16.2	12	12	-	1	0.13
C12xER8M-180	197	180	26.5	12	12	-	1	0.19
C12xER11M-80	96.6	80	16.6	12	16	M5 x 0.8P	2	0.08
C16xER11M-50	66.6	50	16.6	16	16	M5 x 0.8P	2	0.08
C16xER11M-100	116.6	100	16.6	16	16	M5 x 0.8P	2	0.15
C16xER11M-140	156.6	140	16.6	16	16	M5 x 0.8P	2	0.22
C16xER16M-80	117	80	36.6	16	22	M10 x 1.5P	2	0.12
C20xER16M-100	126.6	100	26.6	20	22	M10 x 1.5P	2	0.42
C20xER16M-140	166.6	140	26.6	20	22	M10 x 1.5P	2	0.31
C20xER16M-160	186.6	160	26.6	20	22	M10 x 1.5P	2	0.34
C20xER20M-60	100	60	40	20	28	M12 x 1.75P	2	0.18
C20xER20M-100	140	100	40	20	28	M12 x 1.75P	2	0.24
C20xER20M-120	160	120	40	20	28	M12 x 1.75P	2	0.28
C20xER20M-150	190	150	40	20	28	M12 x 1.75P	2	0.34
C20xER20M-180	220	180	40	20	28	M12 x 1.75P	2	0.40
C25xER20M-140	168	140	28	25	28	M12 x 1.75P	2	0.47
C20xER25M-100	150	100	50	20	35	M12 x 1.75P	2	0.35

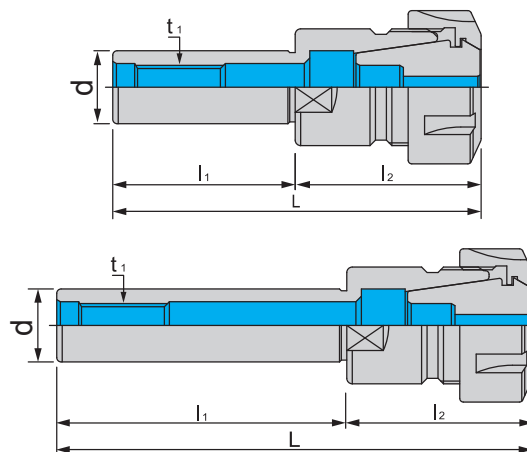


規格 Spec.	L	l ₁	l ₂	d	t ₁	重量 (KGS) Weight
C16xER11A-140	156.5	140	16.6	16	M6 x 1.0P	0.23
C16xER16A-50	90	50	40	16	M10 x 1.5P	0.15
C16xER16A-100	140	100	40	16	M10 x 1.5P	0.20
C16xER16A-150	190	150	40	16	M10 x 1.5P	0.28
C20xER16A-50	90	50	40	20	M12 x 1.75P	0.25
C20xER16A-100	140	100	40	20	M12 x 1.75P	0.35
C20xER16A-150	190	150	40	20	M12 x 1.75P	0.40
C20xER20A-60	100.5	60	40.5	20	M12 x 1.75P	0.22
C20xER20A-120	160.5	120	40.5	20	M12 x 1.75P	0.40
C20xER20A-180	220.5	180	40.5	20	M12 x 1.75P	0.43
C20xER20A-140	180.5	140	40.5	20	M12 x 1.75P	0.34
C20xER25-50	101	50	51	20	M12 x 1.75P	0.40
C20xER25-100	151	100	51	20	M12 x 1.75P	0.41
C20xER32-50	101.5	50	51.5	20	M10 x 1.5P	0.45
C20xER32-100	151.5	100	51.5	20	M10 x 1.5P	0.52
C25xER16A-150	176.6	150	26.6	25	M10 x 1.5P	0.55
C25xER20A-140	175.1	140	40.5	25	M12 x 1.75P	0.55
C25xER25-50	101	50	51	25	M16 x 2.0P	0.40
C25xER25-100	151	100	51	25	M16 x 2.0P	0.50
C25xER32-50	101.5	50	51.5	25	M16 x 2.0P	0.48
C25xER40-50	115	50	65	25	M16 x 2.0P	0.85
C32xER32-60	111.5	60	51.5	32	M16 x 2.0P	0.65
C32xER32-100	151.5	100	51.5	32	M16 x 2.0P	0.80
C32xER40-50	115	50	65	32	M16 x 2.0P	2.23

選配表 Option

筒夾 Collet	螺帽 Nut	扳手 Spanner
B611	B633	B649

• 長度單位 Unit of Length (mm)

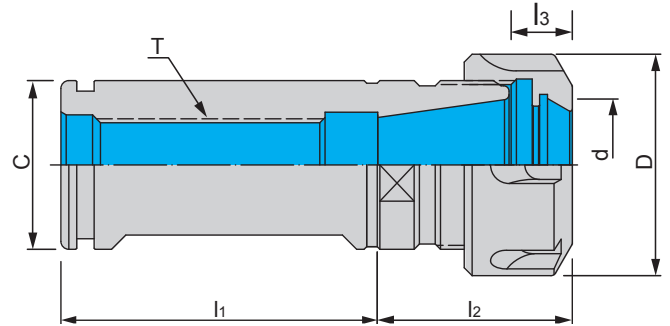


規格 Spec.	L	l ₁	l ₂	d	t ₁	重量 (KGS) Weight
C16xER11A-140T	156.5	140	16.6	16	M6 x 1.0P	0.23
C16xER16A-50T	90	50	40	16	M10 x 1.5P	0.15
C16xER16A-100T	140	100	40	16	M10 x 1.5P	0.20
C16xER16A-150T	190	150	40	16	M10 x 1.5P	0.28
C20xER16A-50T	90	50	40	20	M12 x 1.75P	0.25
C20xER16A-100T	140	100	40	20	M12 x 1.75P	0.35
C20xER16A-150T	190	150	40	20	M12 x 1.75P	0.40
C20xER20A-60T	100.5	60	40.5	20	M12 x 1.75P	0.22
C20xER20A-120T	160.5	120	40.5	20	M12 x 1.75P	0.40
C20xER20A-180T	220.5	180	40.5	20	M12 x 1.75P	0.43
C20xER20A-140T	175.1	140	40.5	20	M12 x 1.75P	0.34
C20xER25-50T	101	50	51	20	M12 x 1.75P	0.40
C20xER25-100T	151	100	51	20	M12 x 1.75P	0.41
C20xER32-50T	101.5	50	51.5	20	M10 x 1.5P	0.45
C20xER32-100T	151.5	100	51.5	20	M10 x 1.5P	0.52
C25xER16A-150T	176.6	150	26.6	25	M10 x 1.5P	0.55
C25xER20A-140T	175.1	140	40.5	25	M12 x 1.75P	0.55
C25xER25-50T	101	50	51	25	M16 x 2.0P	0.40
C25xER25-100T	151	100	51	25	M16 x 2.0P	0.50
C25xER32-50T	101.5	50	51.5	25	M16 x 2.0P	0.48
C25xER40-50T	115	50	65	25	M16 x 2.0P	0.85
C32xER32-60T	111.5	60	51.5	32	M16 x 2.0P	0.65
C32xER32-100T	151.5	100	51.5	32	M16 x 2.0P	0.80
C32xER40-50T	115	50	65	32	M16 x 2.0P	2.23

選配表 Option

筒夾 Collet	螺帽 Nut	扳手 Spanner
B612	B634	B650

• 長度單位 Unit of Length (mm)



特點 Feature

- CNC 車床專用夾頭柄
- 搭配止水筒夾或止水螺帽加止水環 · 用於夾持附水孔刀具

- This is specially fit for CNC Machines.
- With sealed collet or sealed nut add sealed ring for clamping cutters with water hole.

規格 Spec.	L	l ₁	l ₂	l ₃	D	d	C	T	重量 (KGS) Weight
C32 x NC/ER25-60	97	60	37	12	42	25	32	M18x1.5P	0.70
C32 x NC/ER32-60	103	60	43	13	50	32	32	M22x1.5P	0.75
C40 x NC/ER32-80	118	80	38	13	50	32	40	M22x1.5P	1.25
C40 x NC/ER40-75	135	75	60	15	63	40	40	M28x1.5P	1.30

選配表 Option

筒夾 Collet	螺帽 Nut	扳手 Spanner
B612	B634	B650

• 長度單位 Unit of Length (mm)



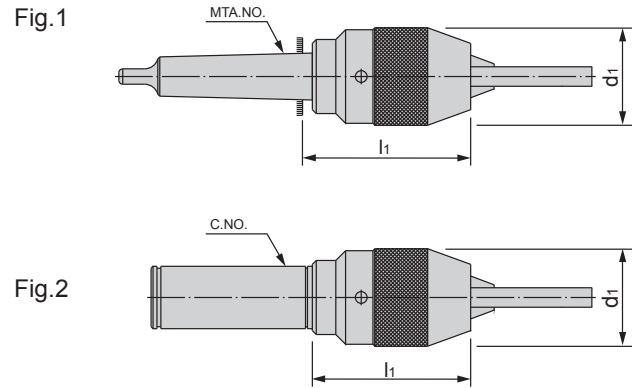
特點 Feature

- 本體可指定削平 · 適用於側邊鎖固。(另外加價)
- 價格=(筒夾×數)+本體+扳手+包裝盒
- 本價格以塑膠盒計算·指定木盒差額請外加
- 套裝小孔徑筒夾不另加價。

- Flatten the body can be specified for the side locking. (Additional price optional).
- Whole set=(ER collet x Qty) + body + spanner + box.
- The prices calculated in plastic boxes, wooden specify please add balance.
- Collets of small sizes in the whole set have no additional price.

規格 Spec.	內容物 Contents		重量 (KGS) Weight
	內附筒夾 夾持能力 Collet		
C16 x ER16-50 x 9PCS	2-10 x 9 只	Ø2, Ø3, Ø4, Ø5, Ø6, Ø7, Ø8, Ø9, Ø10	1.30
C16 x ER16-100 x 9PCS	2-10 x 9 只	Ø2, Ø3, Ø4, Ø5, Ø6, Ø7, Ø8, Ø9, Ø10	1.40
C16 x ER16-150 x 9PCS	2-10 x 9 只	Ø2, Ø3, Ø4, Ø5, Ø6, Ø7, Ø8, Ø9, Ø10	1.50
C20 x ER16-50 x 9PCS	2-10 x 9 只	Ø2, Ø3, Ø4, Ø5, Ø6, Ø7, Ø8, Ø9, Ø10	1.40
C20 x ER16-100 x 9PCS	2-10 x 9 只	Ø2, Ø3, Ø4, Ø5, Ø6, Ø7, Ø8, Ø9, Ø10	1.60
C20 x ER16-150 x 9PCS	2-10 x 9 只	Ø2, Ø3, Ø4, Ø5, Ø6, Ø7, Ø8, Ø9, Ø10	1.60
C20 x ER20-60 x 12PCS	2-13 x 12 只	Ø2, Ø3, Ø4, Ø5, Ø6, Ø7, Ø8, Ø9, Ø10, Ø11, Ø12, Ø13	1.72
C20 x ER20-120 x 12PCS	2-13 x 12 只	Ø2, Ø3, Ø4, Ø5, Ø6, Ø7, Ø8, Ø9, Ø10, Ø11, Ø12, Ø13	1.76
C20 x ER20-180 x 12PCS	2-13 x 12 只	Ø2, Ø3, Ø4, Ø5, Ø6, Ø7, Ø8, Ø9, Ø10, Ø11, Ø12, Ø13	1.88
C20 x ER25-50 x 15PCS	2-16 x 15 只	Ø2~Ø16	1.20
C20 x ER25-100 x 15PCS	2-16 x 15 只	Ø2~Ø16	2.50
C20 x ER32-50 x 6PCS	6-20 x 6 只	Ø6, Ø8, Ø10, Ø12, Ø16, Ø20	1.20
C20 x ER32-100 x 6PCS	6-20 x 6 只	Ø6, Ø8, Ø10, Ø12, Ø16, Ø20	1.20
C20 x ER32-50 x 18PCS	3-20 x 18 只	Ø3~Ø20	1.67
C20 x ER32-100 x 18PCS	3-20 x 18 只	Ø3~Ø20	1.77
C25 x ER25-50 x 15PCS	2-16 x 15 只	Ø2~Ø16	1.80
C25 x ER25-100 x 15PCS	2-16 x 15 只	Ø2~Ø16	2.00
C25 x ER32-50 x 6PCS	6-20 x 6 只	Ø6, Ø8, Ø10, Ø12, Ø16, Ø20	1.50
C25 x ER32-50 x 18PCS	3-20 x 18 只	Ø3~Ø20	2.00
C25 x ER40-50 x 7PCS	6-25 x 7 只	Ø6, Ø8, Ø10, Ø12, Ø16, Ø20, Ø25	1.80
C25 x ER40-50 x 23PCS	4-26 x 23 只	Ø4~Ø26	2.70
C32 x ER32-60 x 6PCS	6-20 x 6 只	Ø6, Ø8, Ø10, Ø12, Ø16, Ø20	2.05
C32 x ER32-60 x 18PCS	3-20 x 18 只	Ø3~Ø20	3.50
C32 x ER40-50 x 7PCS	6-25 x 7 只	Ø6, Ø8, Ø10, Ø12, Ø16, Ø20, Ø25	3.80
C32 x ER40-50 x 23PCS	4-26 x 23 只	Ø4~Ø26	7.88

• 長度單位 Unit of Length (mm)



特點 Feature

- 一體式設計，可避免鑽頭夾具脫落的危險
- 適合使用夾持鑽頭加工
- 操作方便，使用勾扳手可直接鎖緊
- The integration design, may avoid the danger which the drilling attachment falls off.
- Suitable for using clamping drill bit processing.
- The ease of operation, the use hook wrench to be possible to lock directly.

規格 Spec.	NO.	l ₁	d ₁	夾持範圍 Clamp Range		扳手 Wrench	Fig.	重量 (KGS) Weight
				mm	inch			
MTA3xSPU13-80	MTA3	80	50	0.5~13	1/50~1/2	H-130	1	1.30
MTA4xSPU13-80	MTA4	80	50	0.5~13	1/50~1/2	H-130	1	1.65
C20xSPU13-80	C20	80	50	0.5~13	1/50~1/2	H-130	2	1.20
C25xSPU13-80	C25	80	50	0.5~13	1/50~1/2	H-130	2	1.30
C32xSPU13-80	C32	80	50	0.5~13	1/50~1/2	H-130	2	1.50

- 附扳手 Attaches the spanner.

注意事項 Notice

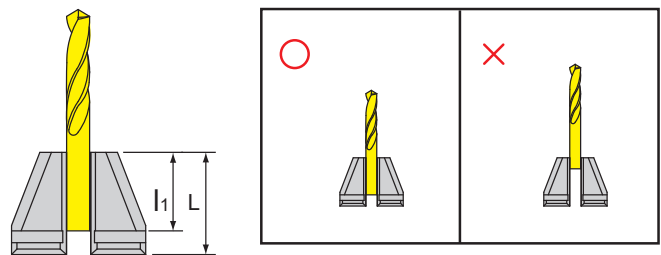
本產品之最大優點為簡單容易操作、快速方便、安全性極高，當使用本產品時，為了減少意外事故發生，延長產品壽命，必須遵守以下列舉的基本事項：夾持長度 (l₁) 應將鑽頭柄插入到底或至少爪長 (L) 的 2/3

The most advantage for this product is easy to operate, fast, convenience and high safety. Please abide by following instructions to avoid the accidents & extend the product life when in use. The shank of drill (clamping length l₁) should be inserted into the bottom fully. Or at least 2/3 length of L.

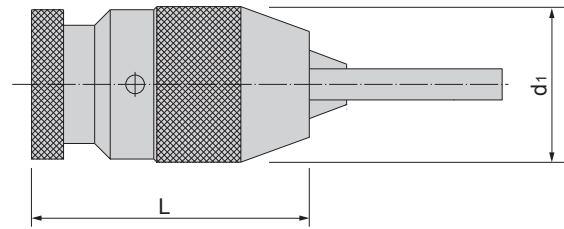
* 以下為各種規格夾爪長度及夾持量 -Following table is the specification for clamping length & volume

規格 Spec.	夾爪長度 L(mm)	夾持量 l ₁ (mm) 至少
3mm (1/8")	14	9
6.5mm (1/4")	20	13
8mm (5/16")	26	17
10mm (3/8")	26	17
13mm (1/2")	28	19
16mm (5/8")	30	20

範例 Example



• 長度單位 Unit of Length (mm)



特點 Feature

- 適合使用夾持鑽頭加工
- 操作方便，使用勾扳手可直接鎖緊

- Suitable for using clamp drill bit processing.
- The ease of operation, the use hook wrench to be possible to lock directly.

規格 Spec.	斜度 Taper	L	d ₁	夾持範圍 Clamping Range		重量 (KGS) Weight
				mm	inch	
KLS-3/8	JT2	80	43	1~10	1/24~3/8	0.61
KLS-1/2	JT6	90	49	1~13	1/24~1/2	0.92
KLS-5/8	JT6	97	55	3~16	1/8~5/8	1.20

- 附扳手 Attaches the spanner.

注意事項 Notice

本產品之最大優點為簡單容易操作、快速方便、安全性極高，當使用本產品時，為了減少意外事故發生，延長產品壽命，必須遵守以下列舉的基本事項：夾持長度 (l₁) 應將鑽頭柄插入到底或至少爪長 (L) 的 2/3。

The most advantage for this product is easy to operate, fast, convenience, and high safety. Please abide by following instructions to avoid the accidents & extend the product life when in use.

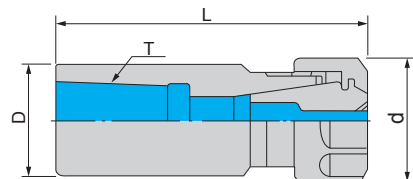
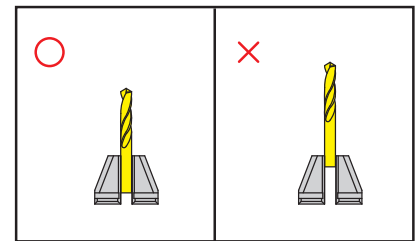
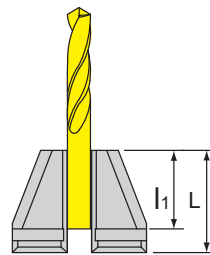
The shank of drill (clamping length l₁) should be inserted into the bottom fully.

Or at least 2/3 length of L

以下為各種規格夾爪長度及夾持量：

Following table is the specification for clamping length & volume

規格 Spec.	夾爪長度 L(mm)	夾持量 l ₁ (mm) 至少
3mm (1/8")	14	9
6.5mm (1/4")	20	13
8mm (5/16")	26	17
10mm (3/8")	26	17
13mm (1/2")	28	19
16mm (5/8")	30	20

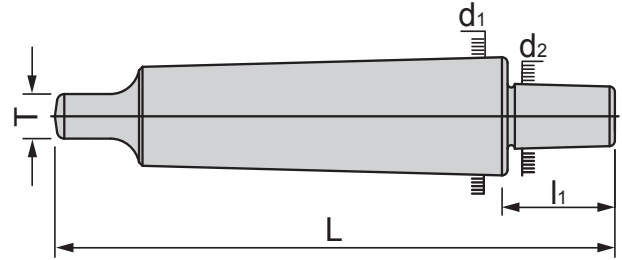


規格 Spec.	L	D	d	T	重量 (KGS) Weight
JT6-ER16-70	70	28	28	JT6	0.28
JT6-ER20-70	70	34	34	JT6	0.32

• 長度單位 Unit of Length (mm)



精密鑽頭柄 CA/MT DRILL SLEEVE



特點 Feature

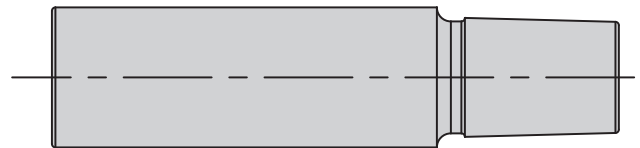
- 全支熱處理研磨

-Grinding and heat treatment all support.

規格 Spec.	適用夾頭 Applicable Chuck	L	l ₁	d ₁	d ₂	T	重量 (KGS) Weight
CA-MT2 x JT6	1/2"	109.4	29.4	17.78	17.17	6.3	0.19
CA-MT3 x JT6	1/2"	128.4	29.4	23.825	17.17	7.9	0.30
CA-MT4 x JT6	1/2"	153.4	29.4	31.267	17.17	11.9	0.70
CA-MT5 x JT6	1/2"	187.4	29.4	44.8	17.17	16.5	1.56



C/JT6 直柄鑽頭柄 C/JT6 DRILL SLEEVE



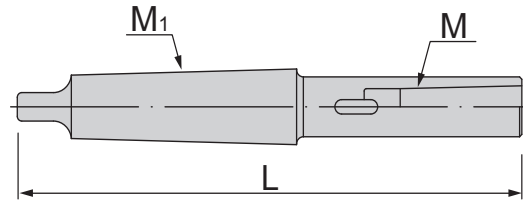
規格 Spec.	斜度 Taper	重量 (KGS) Weight
C20 x JT6	JT6	0.19
C25 x JT6	JT6	0.33
C32 x JT6	JT6	0.50
C42 x JT6	JT6	0.84

ACCESSORIES

• 長度單位 Unit of Length (mm)



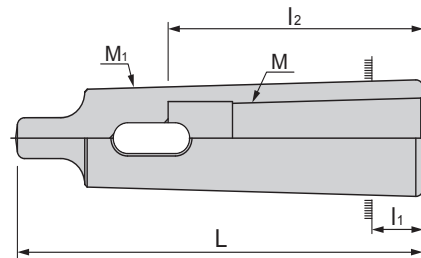
精密延長套筒 EXTENSION DRILL SLEEVE



規格 Spec. (內徑 X 外徑)	L	M	M ₁	重量 (KGS) Weight
ES-MT1 x MT2	160	MT1	MT2	0.25
ES-MT2 x MT2	175	MT2	MT2	0.34
ES-MT3 x MT2	196	MT3	MT2	0.57
ES-MT2 x MT3	194	MT2	MT3	0.49
ES-MT3 x MT3	215	MT3	MT3	0.71
ES-MT4 x MT3	240	MT4	MT3	1.38
ES-MT2 x MT4	215	MT2	MT4	0.83
ES-MT3 x MT4	240	MT3	MT4	1.05
ES-MT4 x MT4	265	MT4	MT4	1.72
ES-MT5 x MT4	300	MT5	MT4	2.97
ES-MT3 x MT5	268	MT3	MT5	2.03
ES-MT4 x MT5	300	MT4	MT5	2.66
ES-MT5 x MT5	335	MT5	MT5	4.18



精密套筒 PRECISION DRILL SLEEVE



特點 Feature

- 全支熱處理研磨

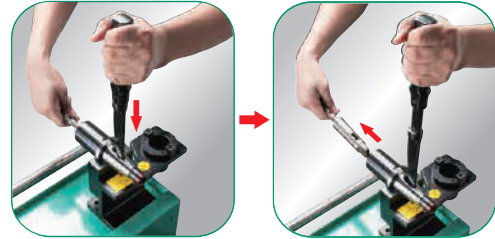
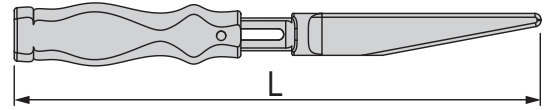
- Grinding and heat treatment all support.

規格 Spec. (內徑 X 外徑)	L	l ₁	l ₂	M	M ₁	重量 (KGS) Weight
DS-MT1xMT2	92	17	56	MT1	MT2	0.10
DS-MT2xMT3	112	18	67	MT2	MT3	0.19
DS-MT2xMT4	124	6.5	67	MT2	MT4	0.45
DS-MT3xMT4	140	22.5	84	MT3	MT4	0.40
DS-MT4xMT5	171	21.5	107	MT4	MT5	0.96
DS-MT5xMT6	218	8	135	MT5	MT6	2.80

• 長度單位 Unit of Length (mm)



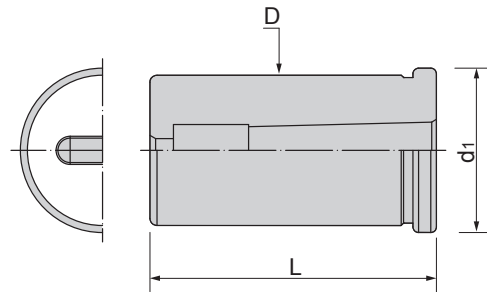
快速退鑽器 HAND DRIFT



規格 Spec.	適用主軸斜度 Taper	L	重量 (KGS) Weight
KP-1	#2, #3, #4, #5	380	1.23



直柄鑽頭套筒 MORSE TAPER SLEEVE



規格 Spec.	內孔斜度 Taper	L	D	d ₁	重量 (KGS) Weight
C20-MT1	MT1	60	20	27	0.13
C20-MT2	MT2	70	20	27	0.12
C25-MT1	MT1	60	25	33	0.23
C25-MT2	MT2	70	25	33	0.20
C25-MT3	MT3	90	25	33	0.18
C32-MT1	MT1	60	32	37	0.36
C32-MT2	MT2	70	32	37	0.37
C32-MT3	MT3	90	32	37	0.36
C32-MT4	MT4	110	32	37	0.27
C42-MT2	MT2	70	42	47	0.82
C42-MT3	MT3	90	42	47	0.82
C42-MT4	MT4	110	42	47	0.77

• 長度單位 Unit of Length (mm)