



Mobile Device Management focused on Education



Creativity, Security, Flexibility

Why Jamf School?

Jamf School is simple, straightforward and easy to manage.



Teacher

Jamf School gives teachers the tools to manage their classes and keep students focused



Student

Jamf School gives students managed control over their own devices



Parent

Jamf School provides management tools for parents

Short explanation

Mobile Device Management

Mobile Device Management (MDM) is software that configures and manages mobile devices — such as computers, tablets and smartphones — from a central location.

A large number of devices require a simple and straightforward management solution, particularly in a school environment.

MDM conveniently and wirelessly manages all devices — no matter where the device is located. A central server establishes a secure connection to the devices via the internet, and admins can manage it all through a simple interface. MDM solutions provide teachers and IT administrators with a convenient tool to administer devices for individual students, school classes or even multiple institutions. For teachers it ensures management of all devices when delivering digital lessons.



Why Jamf School?

Advantages at a glance

Jamf School is a powerful and affordable MDM for the modern, digital classroom.

The system was built on ZuluDesk technology, originally developed at a school in the Netherlands in 2014. Now educational institutions in more than 50 countries rely on it.

Jamf School allows easy management of all Apple devices. It provides simple tools for IT departments, teachers and parents.

In conjunction with Apple's iOS, Jamf School is the best MDM choice for educational purposes. Administrators easily manage the inventory, deployment and security of every Mac, iPad, Apple TV and iPhone in any school, and the system integrates with existing IT solutions with an ease never before possible.





Ease of use

Jamf School's interface is clear and straightforward. Administrators can deploy apps, profiles, and documents from a consolidated menu system— no wading through layers of submenus. Jamf School partners install and configure Jamf School, and this can be done onsite at your school or remotely.



Integration of Apple services

Jamf School conveniently offers access to Apple services such as Apple School Manager, purchasing books and apps in volume, or device enrollment.



Classroom management

Fewer distractions, better learning. Jamf School allows total teacher management of all devices in the classroom with the ability to block apps and web pages— and features such as spell check.



Cost effective for education

The price structure of Jamf School is simple and transparent. Each individual device license costs only \$5.50 USD per year, or \$17.50 USD for a lifetime*, with all updates included. Both license options are including Jamf Standard Support. You can upgrade to Jamf Enhanced Support for \$3.50 USD per license per year.

*Bound to the serial number of the device



Data protection and hosting in the U.S.

With Jamf School, your school can work safe and securely. Our servers are based in the United States, and we make it our utmost priority to make sure working with Jamf School stays safe and easy to use.



Anonymous data

Synchronize Jamf School users and classes anonymously to Apple School Manager to keep your personal data on our servers in the United States.



Innovative apps

Jamf School offers innovative apps with a variety of helpful features designed specifically for teachers, students and parents. Use the apps for free under the Jamf School license.



Find further information about data protection at:

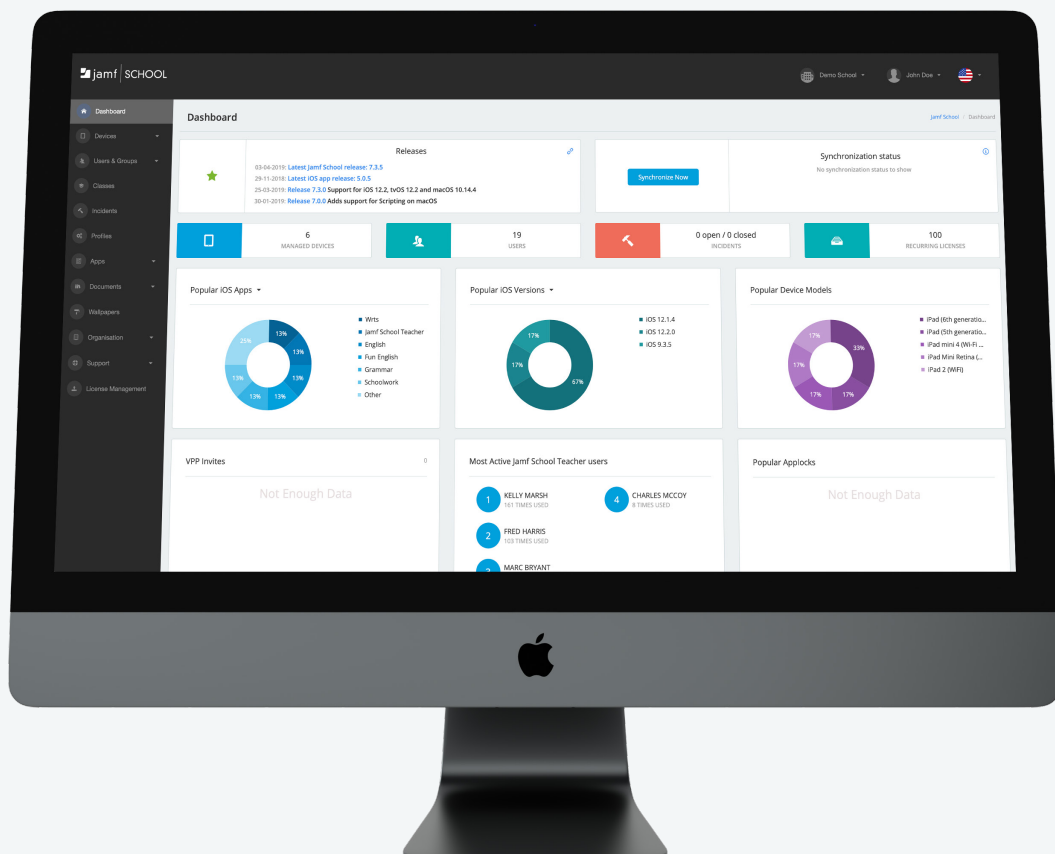
<https://www.jamf.com/privacy/>

For IT Admin

A scalable and intuitive solution

The growing number of mobile devices in schools require scalable and intuitive IT admin solutions.

Jamf School offers a powerful management system that allows you to manage an unlimited number of devices. Whether a single school or an entire school network, Jamf School is the perfect solution.





Jamf School Dashboard

The dashboard offers a comprehensive overview. It's easy to keep track of all managed devices, users, popular apps and more.



Device and user management

Admins can easily create and manage users, user groups and device groups. It is also possible to view in-depth information and perform diagnostics on individual devices.



Location support

Having to manage multiple locations or schools is no problem with Jamf School. With location support, you can easily manage each location and its devices, users and groups separately.



Active profile management

Jamf School supports various profiles for students, teachers and other employees. Admins can create layouts for devices, install restrictions and more.



Class management

Easily manage classes by dragging and dropping the required apps and content and creating restrictions. Teachers can request apps from Jamf School which are then shared with the IT admin.



Jamf School Incident System

This powerful tool helps the IT department manage issues with devices. Register damaged iPads and upload photos or additional documents to assist with warranty or insurance claims.



iBeacon profile assignment

This feature enables automatic assignment of profiles using iBeacon technology. For example, when students enter the chemistry room, suitable apps and educational materials automatically display on their devices, while unrelated content is hidden.



Free updates

All updates and newly released apps are included as part of Jamf School license usage.



AirPrint printer management

AirPrint technology enables documents to be printed without installing printer drivers. Jamf School seamlessly supports this technology.

For Teachers

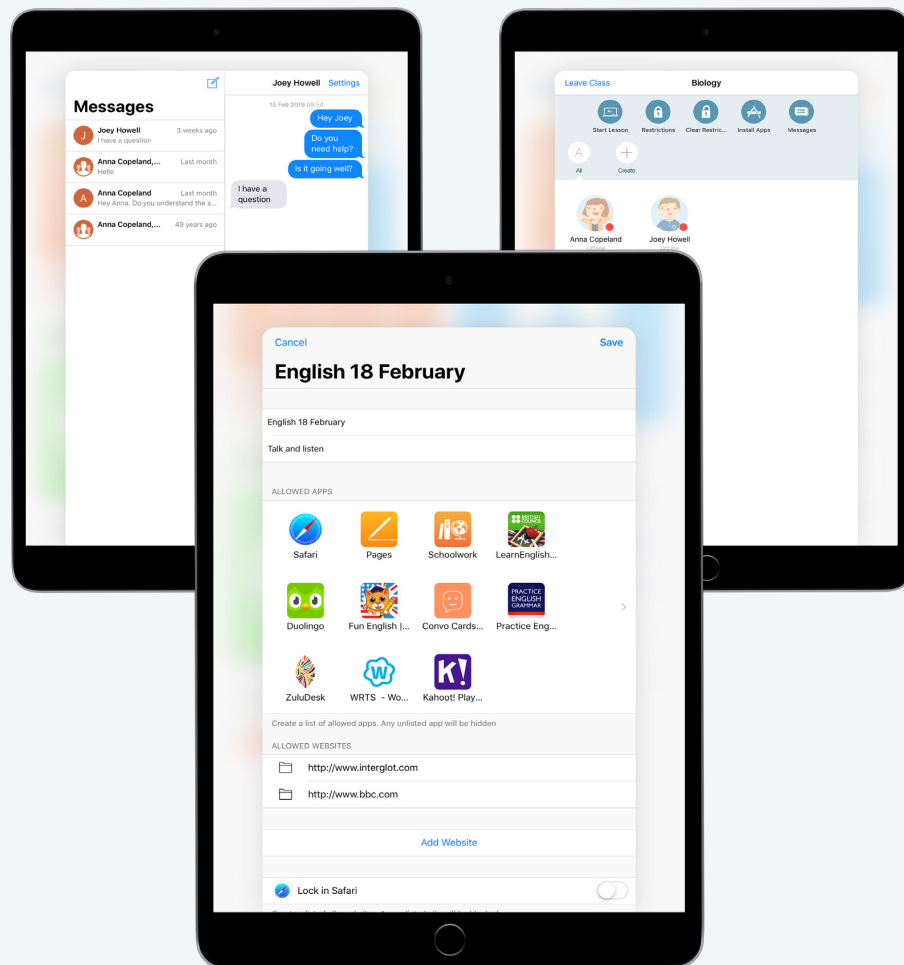
Jamf School revolutionizes teaching



The Jamf School Teacher app is designed to meet the needs of schoolteachers.

The app makes it possible to quickly and easily manage Apple devices.

Jamf School Teacher complements Apple's own Apple Classroom app — so the advantages of both systems can be conveniently used together.





Prepare lessons

The prepare lessons feature makes it easy to prepare lesson profiles containing apps and web pages and to provide them for students during class.



Manage access

Prevent the access and use of selected device functions. The teacher effectively manages notifications, camera functions or the use of web pages — limiting student distraction.



Temporarily restrict app usage

Only apps on the allowed list will be available to students on their iPads. All other apps and associated notifications are temporarily hidden.



The attention screen

To get the undivided attention of the students, Jamf School provides the attention screen. By pressing a button, it is possible to lock the students' iPads and display a message if required.



Time-based security

Time-based and permanent restrictions allow the use of iPads in exams.



Write messages

The Jamf School Teacher app keeps students up to date. The messaging feature allows teachers to communicate with individual students or with groups.



Device information

Teachers can request general information for each selected student device. For example: determining the battery level of a particular device.



Easy use of shared iPad

With a simple QR code scan, iPads can be assigned profiles. That way, teachers can easily assign individual devices to different users. The users know which device to use, as their picture can be seen on screen. After signing in, students will find their homework, apps and assignments exactly as they left them.



Teacher online web app

As an alternative to the iOS app, the Jamf School interface is also available online via a web browser. Teachers can prepare lessons off-site without an iPad.

For Parents

Be active and aware



Teachers in schools worldwide manage Apple devices through Jamf School, creating better learning through fewer distractions.

With Jamf School Parent, parents can participate in their children's schoolwork and easily manage their children's devices.

The use of the parent functions (app or web-based) gives parents tools to bring focus to homework for a set period of time.





Modify access to games

Jamf School offers parents time-based and access management for games and non-essential apps on their children's iPads.



Manage communication

With simple settings, Jamf School makes the use of programs such as iMessage, WhatsApp and Messenger safer and more monitored.



Manage social media

Jamf School allows parents to set rules limiting the use of social media such as Twitter, Facebook or Instagram to specific times during the day.



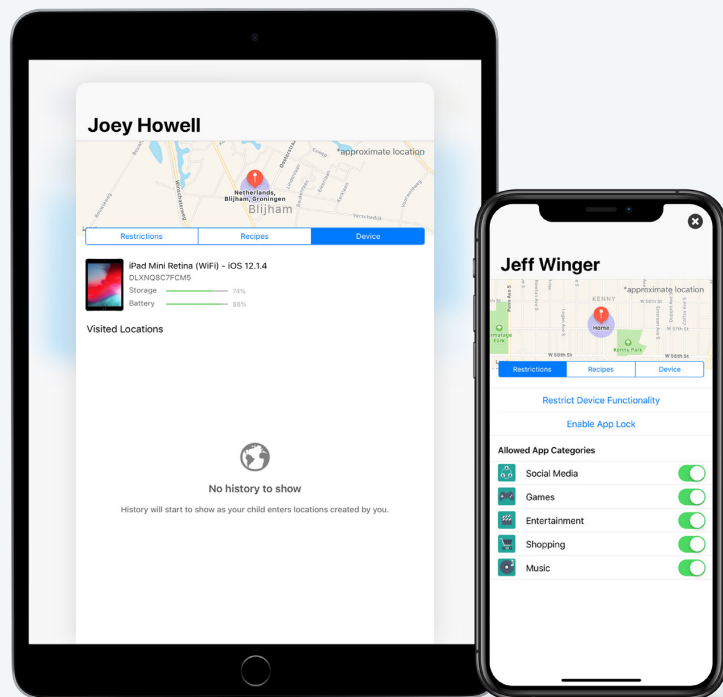
Location notifications

The app informs parents about their child's arrival at school and with their return home.



Safety feature

Jamf School includes a motion-sensing feature: automatically turning notifications off when a child is cycling or walking — reducing distraction and increasing road safety.



For Macs

Jamf School for macOS

Jamf School brings you macOS support: brand new applications and features to make Jamf School the best MDM solution for macOS in education.

Jamf School gives you the option to customize your macOS device with pre-approved settings and programs via the Jamf School Self Service app.

And if you lose your laptop, we can help you with that, too!

Where's my Mac?

Finding lost macOS devices is now easier than ever. Lock devices and, if you'd like, issue an alert at full volume.

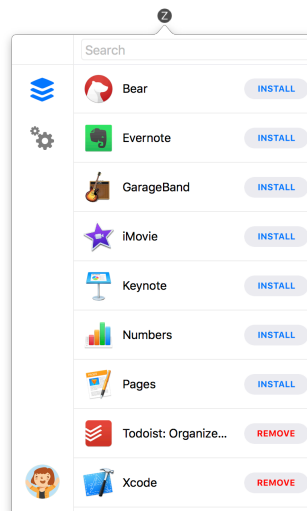
Restrict your lost macOS device until it is returned or found.





Jamf School Self Service

Jamf School Self Service gives the user more control over their supervised Mac device. Users may download and install pre-approved programs, documents and wallpapers to customize their macOS device to their needs.



Jamf School Scripting

With Jamf School Scripting, you can run scripts directly from the Jamf School Management System as well as see the response, any error codes, and the time the script was executed.

Run custom scripts once, on schedule or at certain events such as on login or logout. Jamf School Scripting makes macOS device management even easier.



Spotlight

Privacy, content caching, locations

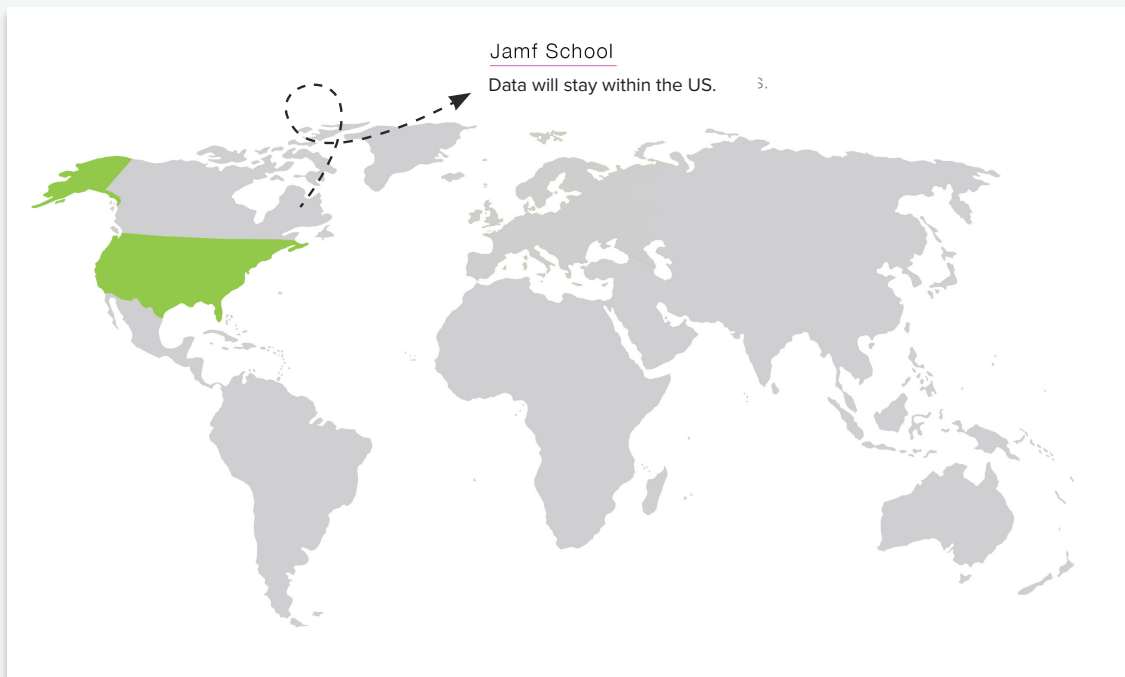
Jamf School takes time to help you keep your data secure and safely managed. Internet data can be important, too.

If everyone in class needs to download the same file at the same time, it can cause a slowdown. Jamf School has a new feature that can help with this problem.

School IT staff will be happy with location support. Whether it's one school or a group of schools, they will be able to seamlessly manage multiple locations.

Anonymize data

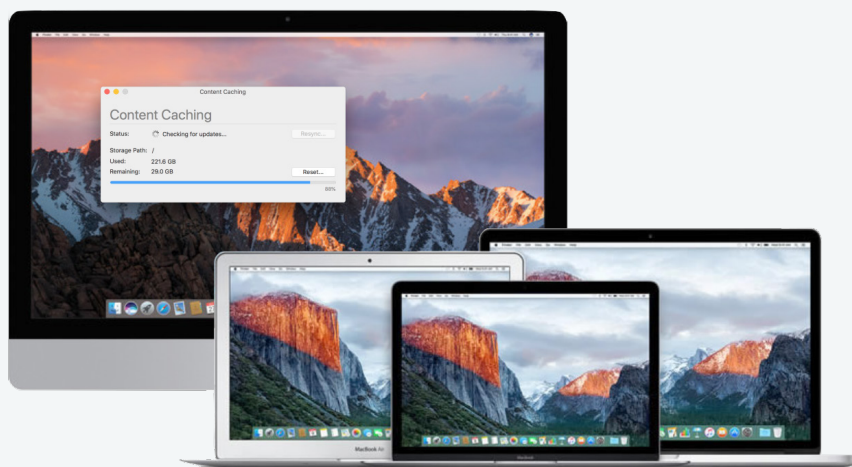
Jamf School facilitates anonymized data in the U.S. cloud. Choose to synchronize data in Jamf School anonymously to Apple School Manager, so personal data stays safely within the United States.



Jamf School content caching

Everyone using the internet at the same time can slow and trip up networks. Content caching helps to reduce internet data use and speed up software installation.

Content caching lets admins download apps and documents onto a dedicated device and offer them on-demand via the local connection.



Locations

Managing multiple locations or schools is no problem with Jamf School. Location support let you easily manage each location and its devices, users and groups separately.

IT administrators can manage devices, users, profiles, apps, documents, Smart Groups and settings from within the same account. Also, unassigned Jamf School licenses can be transferred between different locations.

The synchronization between Jamf School and Apple School Manager happens seamlessly. Admins just upload their Apple School Manager tokens and all locations, students, teachers, staff and devices will appear correctly within Jamf School.

Compatibility

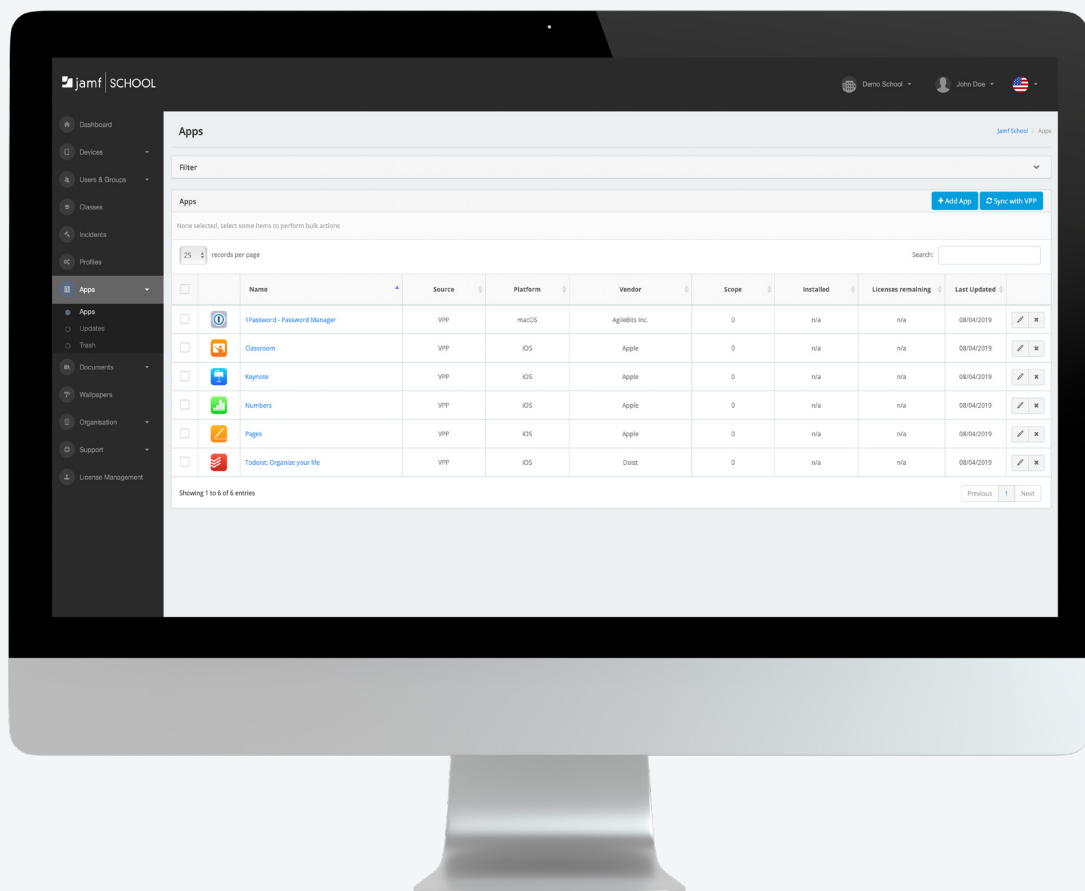
Jamf School and Apple services

Apple services significantly simplify the MDM setup process.

They enable devices to be registered quickly and configured automatically. They also allow direct purchase and distribution of apps.

Jamf School is the ideal management system, seamlessly compatible with all Apple services.

It has never been easier to provide iPads and Macs to students and teachers.





Apple School Manager: manage Apple IDs and apps

Apple School Manager is a simple web-based portal that admins can use to assign iPads and Macs in schools to an MDM. It enables the creation and management of Apple IDs for all students and employees and makes it easy to purchase books and study materials.

Jamf School integration with Apple School Manager makes it easy to sync classes, students and teachers. iPads can be set up wirelessly. The setup and registration with the appropriate settings and restrictions requires minimal manual intervention. Apple School Manager includes device enrollment and purchasing apps and books in volume.



Apple device enrollment

Educational institutions can easily deploy and configure Apple products by automating enrollment and supervision into an MDM. Enrollment provides schools with a streamlined way to deploy their organization's iPads, iPhones, Macs and Apple TVs.



Purchasing apps in volume

Apple allows educational institutions to buy apps in large numbers and distribute them within their schools. Jamf School works closely with Apple to seamlessly integrate the purchasing in volume with the Jamf School Management System.

* The use of Apple device management and purchases apps in volume always requires the use of Apple School Manager.

Jamf School licensing

Consistent and transparent

Jamf School keeps fees and licensing concise.

There are no hidden pricing incursions for updates or new releases, making Jamf School a reliable MDM solution for schools.

The pricing below is per device.

1-YEAR-LICENSE

\$5.50 USD*

Each managed device requires a license. This license is transferable if a device needs to be replaced.

Includes Jamf Standard Support.

LIFETIME LICENSE

\$17.50 USD*

The license is bound to a serial number and is valid as long as the device is in use. This license can not be transferred.

Includes Jamf Standard Support.

JAMF ENHANCED SUPPORT

\$3.50 USD*

Jamf Enhanced Support includes chat, email, inbound phone and escalated support.

* Prices do not include taxes or VAT.



Local helpdesk

First-class support and customer service are what really define Jamf. Our friendly support team will help you quickly and competently with every problem.



Jamf cloud

Jamf School is cloud-based. New features, updates and apps are automatically available.



Complete package

A license provides access to Jamf School and Jamf School apps, including all future features and updates.



100% education

Jamf School is fully focused on education, and it shows. All of our tools and functions are specific to schools and students.



Request your free trial today!

www.jamf.com/request-trial/jamf-school



Do you have questions or need support?
Please contact us.

(512) 893 6450

www.jamf.com/support/jamf-school



100 Washington Ave S, Suite 1100
Minneapolis, MN 55401

11940 Jollyville Rd, Suite 210-N
Austin, TX 78759