

AF-11H Type Heavy Duty Trap

Float type
Max. 0.5MPa

Ideal for heat exchanger, drying machine, header etc. with large amount of drain generated.

Simple structured, lever float type heavy duty trap with balancing structure of valve disc. Small in size but large in discharge capacity.

FEATURES

- Simple, durable structure.
- Balancing structure allows large discharge capacity.
- Easy disassembly and maintenance.
- Wax type air vent valve prevents air problem.
- Continuous discharge of drain.

SPECIFICATIONS

Model name	AF-11H
Code name	AF11H-B
Applicable fluid	Steam
Fluid temperature	Max. 160°C
Applicable pressure	Max. 0.5MPa
End connection	Screwed JIS Rc
Materials	Body(Cast iron), Disc & seat(Stainless steel), Float(Stainless steel)
Valve body pressure test	Hydraulic 0.75MPa

DIMENSIONS

(mm)

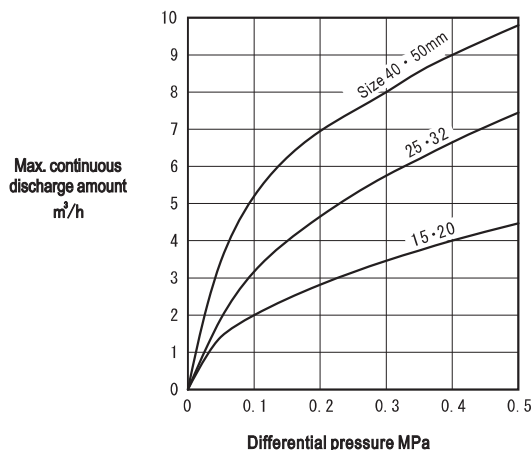
Size	d	L	H ₁	H ₂	H ₃	D	W	Mass(kg)
15(1/2")	1/2"	285	62	137	252	115	216	14
20(3/4")	3/4"	285	62	137	252	115	216	14
25(1")	1"	290	63	133	261	115	216	15
32(1 1/4")	1 1/4"	290	63	133	261	115	216	15
40(1 1/2")	1 1/2"	370	69	189	336	125	248	29
50(2")	2"	370	69	189	336	125	248	29

TABLE FOR CAPACITY (Max. continual discharge amount)

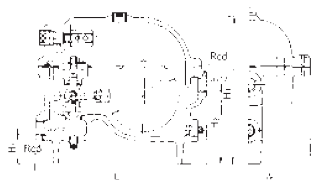
(m³/h)

Size	Differential pressure MPa							
	0.03	0.05	0.1	0.2	0.3	0.35	0.4	0.5
15 · 20(1/2" · 3/4")	0.95	1.41	2.00	2.82	3.46	3.74	4.00	4.47
25 · 32(1" · 1 1/4")	1.20	1.90	3.17	4.65	5.75	6.20	6.65	7.45
40 · 50(1 1/2" · 2")	2.32	3.45	5.20	6.95	8.00	8.55	9.00	9.80

FLOW CHART



CONSTRUCTION



POINTS FOR SIZE SELECTION

Select a proper size that can meet the requirement on safety factor and allow at least 3 times of planned discharge volume.

In the case there is back pressure at the outlet side of trap, use the differential pressure between inlet and outlet sides to select the size of valve.

Note: Read POINTS FOR SIZE SELECTION AND INSTALLATION carefully (see Page 165).