

QH-3 type silencer (lotus root type)

It is used to reduce the noise and vibration generated when steam is blown into water to make hot water. Used for bathtubs and other open-type hot water tanks (95 ° C or less). It is a small silencer with a lotus root-shaped cross section and a large amount of heat transfer.

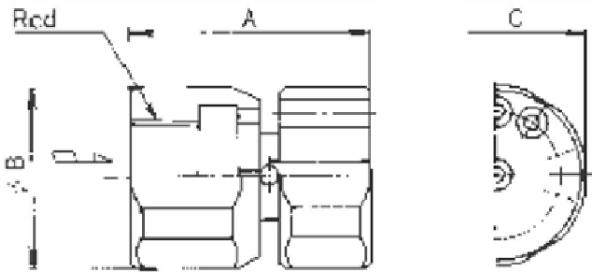


SPECIFICATIONS

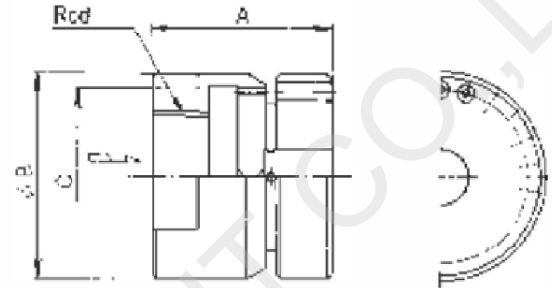
Model name	QH-3
Code name	QH3-D
Applicable fluid	Steam
Applicable pressure	Max. 0.7 MPa
Warning sound temperature limit	95°C
End connection	Screwed JIS Rc
Materials	Stainless Steel

CONSTRUCTION

Size 15~25mm



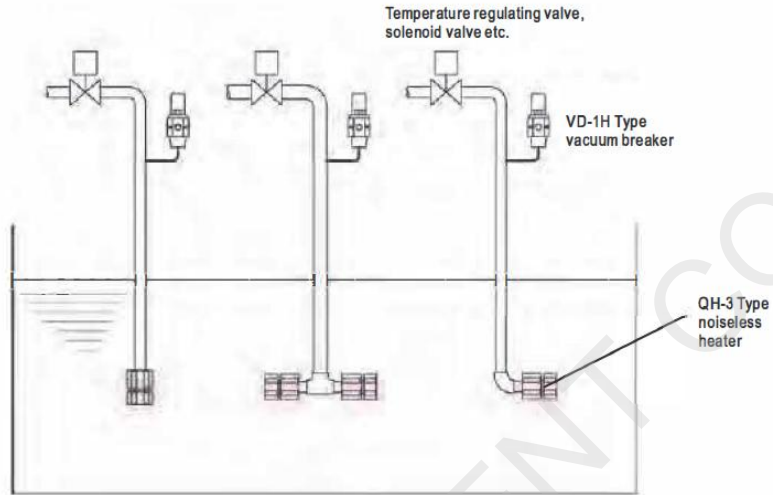
Size 32~50mm



DIMENSION

Size	d	A (mm)	B (mm)	C (mm)	Mass (kg)
15 (1/2")	1/2"	50	34	32	0.21
20 (3/4")	3/4"	53	40	38	0.28
25 (1")	1"	60	48	46	0.5
32 (1 1/4")	1 1/4"	63	65	55	1
40 (1 1/2")	1 1/2"	65	75	63	1.4
50 (2")	2"	70	110	95	3.4

PIPING EXAMPLE



- Note:**
1. Install noiseless heater at least 300mm away from the wall or bottom of the tank.
 2. Install VD-1H Type vacuum breaker for preventing backflow of water that may occur when steam supply is stopped.

CAPACITY CHART

