

## PN25 DUCTILE IRON, Y TYPE STRAINER

Fig: 678E/(PHOX)EN25-DTF

Sizes: 2-12inch(50-300mm)

BOLTED COVER, FLANGED ENDS.

Standards

. End to End: EN 558-1 Series4

. End Connection: EN 1092-2 PN25

. Wall Thickness: MANUFACTURERS STANDARD

Test Standard

. MANUFACTURERS STANDARD

Dimensions

SIZE (inch/mm)	L	L1	H	D1	Kg
2	50	216.0	0.0	140.0	0.00
2 1/2	65	241.0	0.0	162.0	0.00
3	80	283.0	0.0	184.0	0.00
4	100	305.0	0.0	225.0	0.00
5	125	381.0	0.0	280.0	0.00
6	150	403.0	0.0	318.0	0.00
8	200	521.0	0.0	405.0	0.00
10	250	635.0	0.0	485.0	0.00
12	300	749.0	0.0	580.0	0.00

Material List

NAME OF PART	MATERIAL	SPECIFICATION
BODY	DUCTILE IRON	EN1563 EN-GJS-450
COVER	DUCTILE IRON	EN1563 EN-GJS-450

Specifications

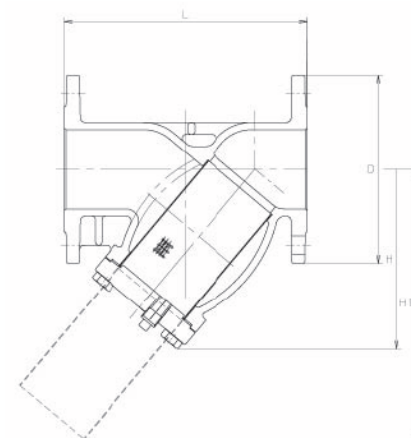
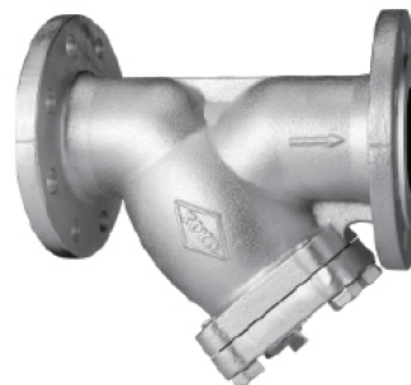
PN25 DUCTILE IRON, Y TYPE STRAINER, BOLTED COVER, FLANGED ENDS.

End to End : EN 558-1 Series4, End Connection : EN 1092-2 PN25, Wall

Thickness : MANUFACTURERS STANDARD, Test Standard : MANUFACTURERS

STANDARD, Sizes : 2-12inch(50-300mm), BODY MATERIAL : DUCTILE

IRON, COVER MATERIAL : DUCTILE IRON, Fig : 678E/(PHOX)EN25-DTF



For more details, please refer to the drawing.

Pressure-temperature ratings and other performance data published in this catalog have been developed from our design calculation, in-house testing, field reports provided by our customers and/or published official standards or specifications. They are good only to cover typical applications as a general guideline to users of KITZ products introduced in this catalog. For any specific application, users are kindly requested to contact KITZ Corporation for technical advice, or to carry out their own study and evaluation for proving suitability of these products to such an application. Failure to follow this request could result in property damage and/or personal injury, for which we shall not be liable. Read instruction manual carefully before use.



**Toyo Valve**

**ISO 9001**  
**CERTIFIED**

Since 1989