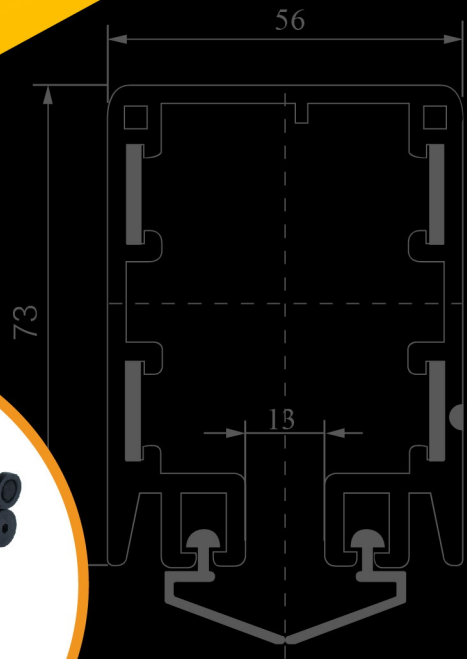
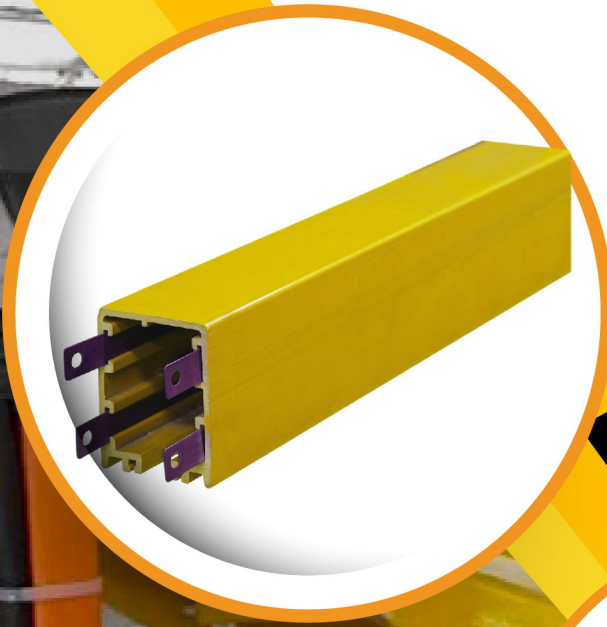


TITAN[®]

TITAN CRANE CO., LTD.

TITAN ENCLOSED CONDUCTOR SYSTEMS



ISO 9001:2015

LINE @titancrane

f TitanCrane



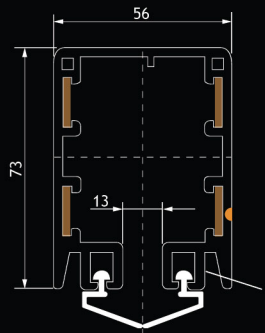
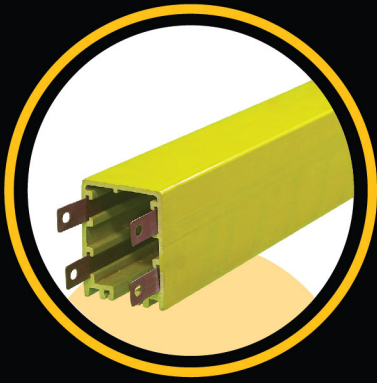
www.titancrane.co.th



TitanCrane Channel

"TITAN" END CLOSED SYSTEMS

LINE ELEMENT



Model Code

TCR-4-n/m

n : max.current capacity
m : conductor cross section

Standard Length : 4m, others is available, but not more than 6m

Joint method : 50A -120A connected by screw
140A-240A connected by bolted joint

Support Bracket Spacing : 1.2m for straight travel

Sealing strip (be ordered separately)

Model	Pole No.	Cross Section (mm ²)	Max. Current (A)	Leakage-distance (mm)	Max. voltage (V)	Resistance (Ω/km)	Weight (kg)
TCR-4-50	4	10	50	35	600	1.656	2.16
TCR-4-80	4	15	80	35	600	1.137	2.3
TCR-4-100	4	20	100	33	600	1.011	2.43
TCR-4-120	4	25	120	33	600	0.713	2.56
TCR-4-140	4	35	140	33	600	0.522	2.95
TCR-4-170	4	50	170	33	600	0.337	3.25
TCR-4-210	4	70	210	33	600	0.256	3.85
TCR-4-240	4	80	240	30	600	0.223	4.16

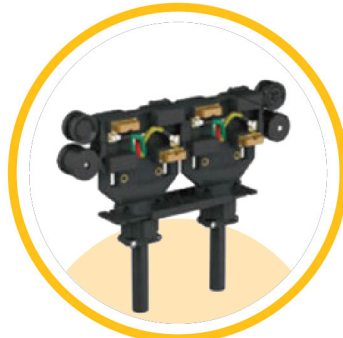
ACCESSORIES

CURRENT COLLECTOR



Weight (kg.)	Poles	Power rating
0.7	4	40A

CURRENT COLLECTOR



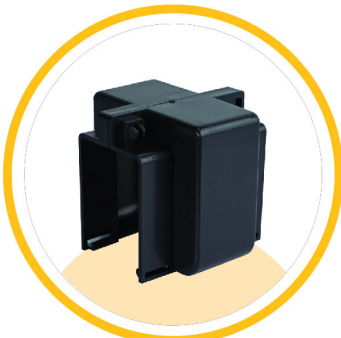
Weight (kg.)	Poles	Power rating
1.35	4	60A

CURRENT COLLECTOR



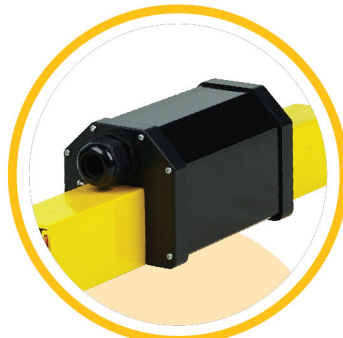
Weight (kg.)	Poles	Power rating
1.30	4	80A

JOINTING BOX



Weight (kg.)	Material
0.09	Plastic

LINE FEED (WITH 0.5METER POWERRAIL)



Weight (kg.)	Material
0.065	Plastic

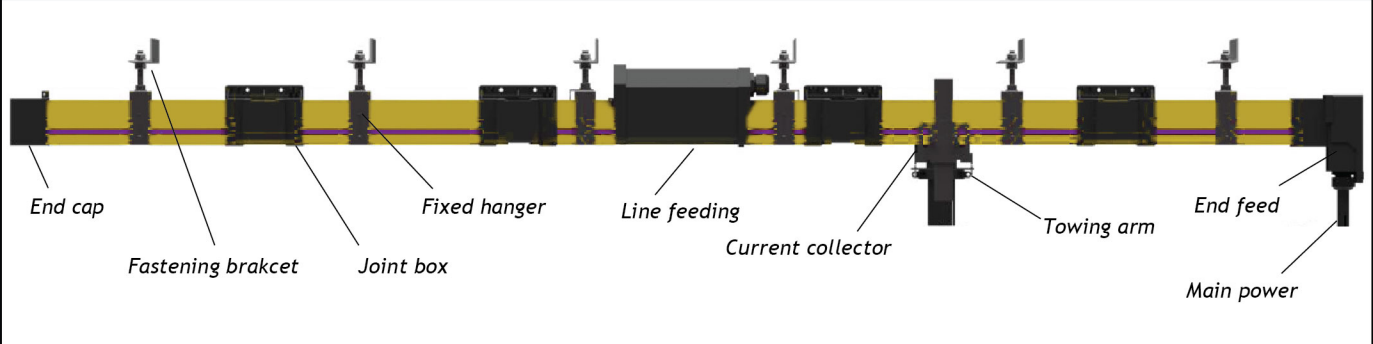
END CAP



Weight (kg.)	Material
0.065	Plastic

"TITAN" END CLOSED SYSTEMS

SYSTEM DESCRIPTION



TECHNICAL DATA

ELECTRICAL PROPERTIES :

Max.current	240A
Max.voltage	660V
Dielectric strength	30-40KV/mm
Spec.resistance	5×10^{15} Ohm \times cm
Surface resistivity	10^{13} Ohm \times cm
Leakage resistance	CTI600 - 2.7

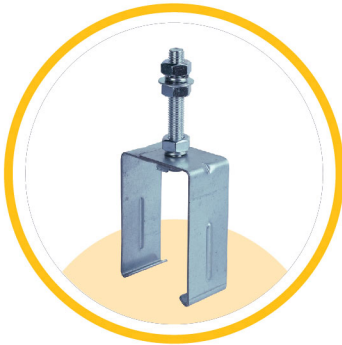
MECHANICAL PROPERTIES :

Flexible strength	75N/mm \pm 10%
Tensile strength	40N/mm \pm 10%
Temperature range:	
Standard Housing	-20°C up to +70°C
High Temp.Housing	-10°C up to +115°C

COMBUSTIBILITY :

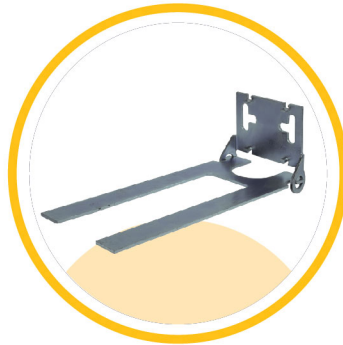
Flame retardant	B1 Class
Self extinguishing	Class B1 - no flaming particles, self-extinguishing

SLIDING HANGER



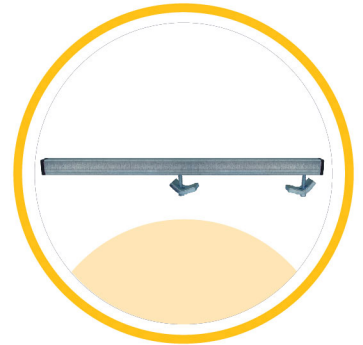
Weight (kg.)	Material
0.21	Galvanize Steel

TOWING ARM



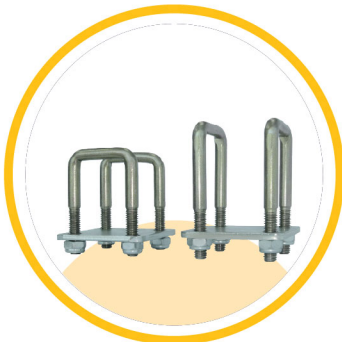
Weight (kg.)	Material
0.53	Galvanize Steel

FASTENING BRACKET



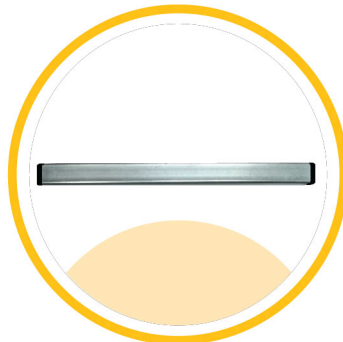
Length (mm)	Material
400, 500, 600	Galvanized Steel

RECTANGULAR PIPE



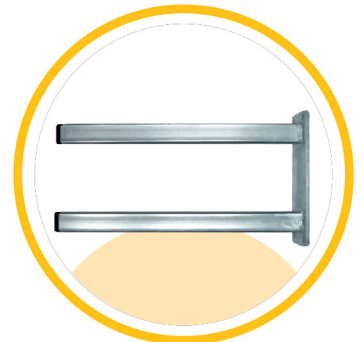
Weight (kg.)	Max.load (kg.)	Material
0.25	16	Galvanize Steel

RECTANGULAR PIPE



Length (mm.)	Weight (kg.)	Material
250, 500, 750	0.40, 0.72, 1.20	Galvanize Steel

CURRENT COLLECTOR TOWING ARM



End Carriage	Weight (kg.)	Material
250 - 500	2.5	Galvanize Steel
110 - 200	2.1	

** Please contact with Nante technical team for special projects and conditions

LIFTING YOUR BUSINESS, LIFTING YOUR SUCCESS



www.titancrane.co.th

GET IN TOUCH WITH

Titan Crane Co., Ltd.

 1/19 M.1 Phimpha, Bangpakong,
Chachoengsao 24130, Thailand.
 www.titancrane.co.th
 titancrane.info@gmail.com
 038 989 369-72



www.titancrane.co.th



Titan Crane Map



@Titancrane official



Titan Crane Channel



Titan Crane Facebook