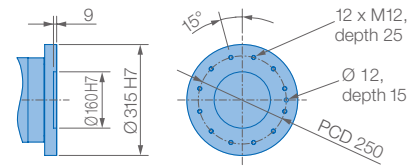
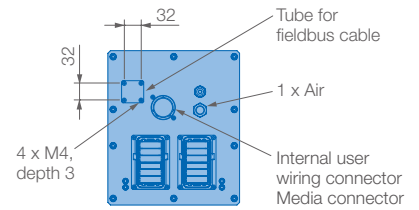


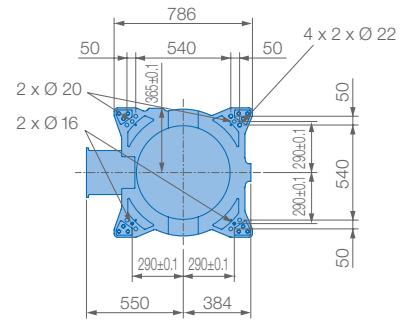
View A



View B

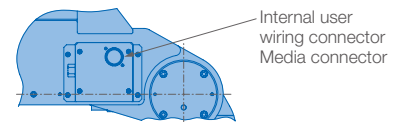


View C

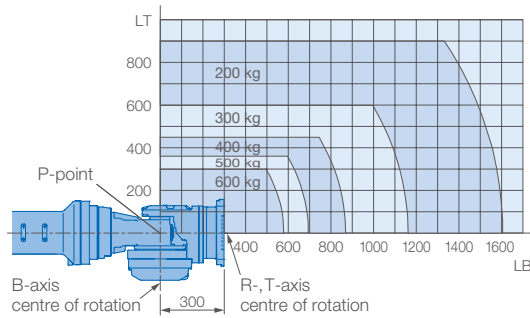


Mounting option: Floor
Protection class: IP30/67

View D



Allowable wrist load



Specifications GP600						
Axes	Maximum motion range [°]	Maximum speed [°/sec.]	Allowable moment [Nm]	Allowable moment of inertia [kg · m ²]	Controlled axes	6
S	±180	82	-	-	Max. payload [kg]	600
L	+61/-55	82	-	-	Repeatability [mm]	±0.1
U	+18/-113	82	-	-	Max. working range R [mm]	2942
R	±360	80	3430	520	Temperature [°C]	0 to +45
B	±115	80	3430	520	Humidity [%]	20 - 80
T	±360	162	1764	350	Weight [kg]	3035
					Power supply, average [KVA]	7.0