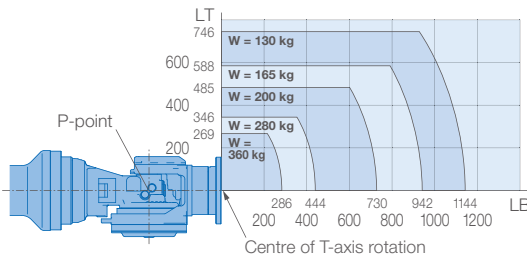
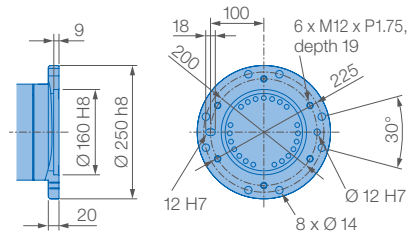


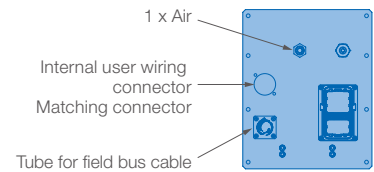
**Allowable wrist load**



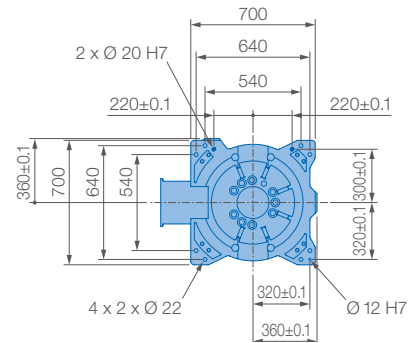
**View A**



**View B**



**View C**



Mounting options: Floor  
IP Protection: IP67 (wrist), IP54 (body)

Specifications GP360					
Axes	Maximum motion range [°]	Maximum speed [°/s]	Allowable moment [Nm]	Allowable moment of inertia [kg · m²]	Controlled axes
S	±180	110	–	–	6
L	+90/–45	90	–	–	Max. payload [kg]
U	+15.5/–120	90	–	–	360
R	±360	125	1960	260	Repeatability [mm]
B	+125	125	1960	260	±0.1
T	±360	205	950	180	Max. working range R [mm]
					2832
					Temperature [°C]
					0 to +45
					Humidity [%]
					20 – 80
					Weight [kg]
					2380
					Max. connected load [kVA]
					7.5