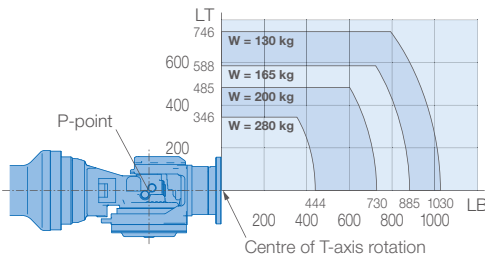
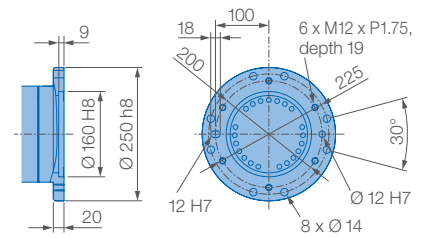


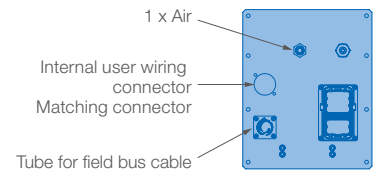
**Allowable wrist load**



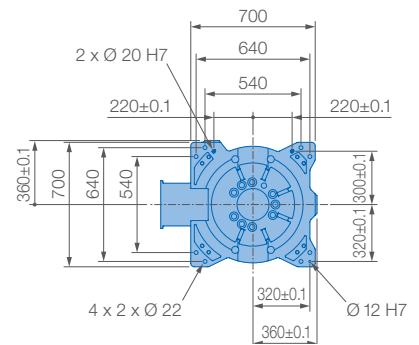
**View A**



**View B**



**View C**



Mounting options: Floor  
IP Protection: IP67 (wrist), IP54 (body)

Specifications GP280L						
Axes	Maximum motion range [°]	Maximum speed [°/s]	Allowable moment [Nm]	Allowable moment of inertia [kg · m <sup>2</sup> ]	Controlled axes	6
S	±180	110	–	–	Max. payload [kg]	280
L	+90/–45	90	–	–	Repeatability [mm]	±0.1
U	+15.5/–120	90	–	–	Max. working range R [mm]	3114
R	±360	125	1960	220	Temperature [°C]	0 to +45
B	+125	125	1960	220	Humidity [%]	20 – 80
T	±360	205	950	140	Weight [kg]	2390
					Max. connected load [kVA]	7.5