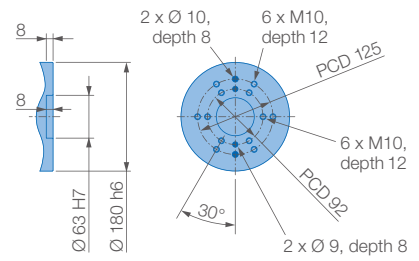
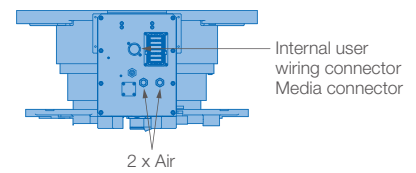


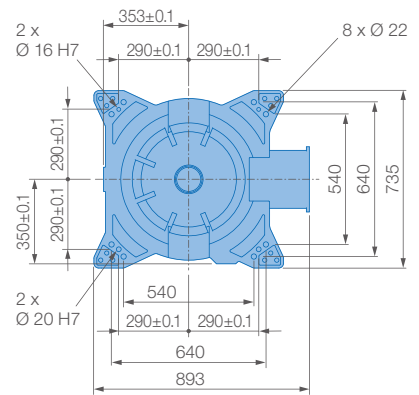
View A



View B



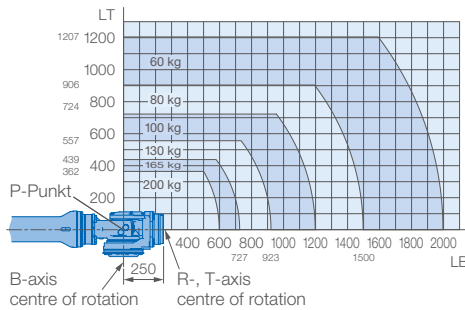
View C



Mounting option: Ceiling

IP protection class: Main axes (S, L, U) IP54 (option IP65), wrist IP67

Allowable wrist load



Specifications GP215-200T						
Axes	Maximum motion range [°]	Maximum speed [°/s]	Allowable moment [Nm]	Allowable moment of inertia [kg · m ²]	Controlled axes	6
					Max. payload [kg]	200
S	±180	100	-	-	Repeatability [mm]	±0.05
L	±50	90	-	-	Max. working range R [mm]	2676
U	+197/-77.8	97	-	-	Temperature [°C]	0 to +45
R	±360	120	1176	317	Humidity [%]	20 - 80
B	±125	120	1176	317	Weight [kg]	1360
T	±360	190	710	200	Power supply, average [kVA]	5.0