

# Make Labs Easy with Digitalization & AI

Exceptional Research Begins with  
Effective Laboratory Management



## Fully Control Your Labs with Monitoring & Analytics

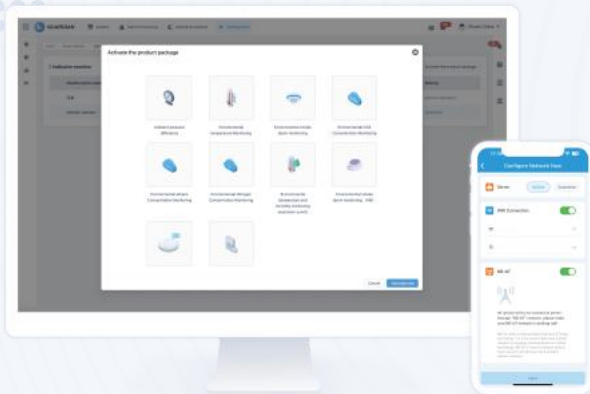
SciOne Guardian integrates plug-and-play wireless sensors, easy-to-use software, and AI data analytics solutions, continuously collect and transmit data from your lab to the cloud, and onto your personalized dashboards.



## Key Features

### All-in-One

- Robust IoT sensors for comprehensive monitoring of lab environment, LN2 tank, freezer, incubator, oven, etc.
- Our cloud-based software platform grows with your business, ensure long-term reliability and scalability
- APIs allow data to be integrated into other systems to ensure full access to use your data

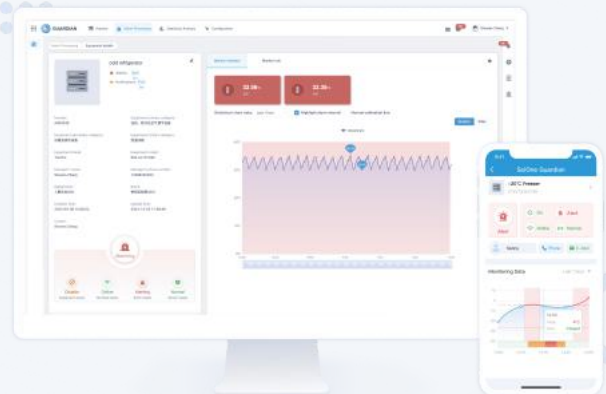
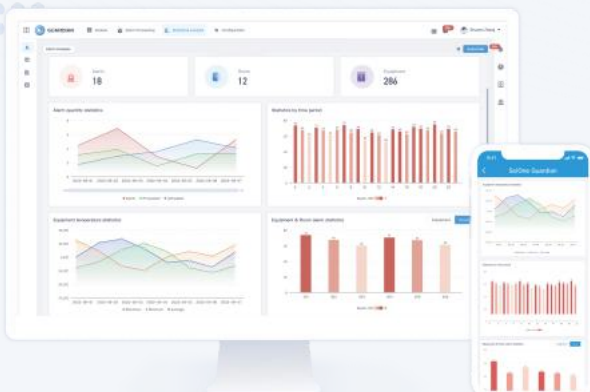


### Ease-of-Use

- Wireless connections, plug-and-play sensors, easy for installation and service
- Preconfigured for quick deployment to ensure start monitoring minutes after setup
- With mobile APP, stay informed at anywhere, anytime

### Smart & Customizable Alerts

- Immediate action on underlying issues with highly customizable contextual alerts
- Sensor-fusion technology for precise alert, minimize false alerts
- Comprehensive alert history with notes for context, a must-have for audits



### Data Analytics & Dashboards

- Establish of historical records without additional effort
- Analyze historical data to identify trends and optimization insights
- Ensure compliance with regulations through accurate and detailed reporting



## Maximize Lab Equipment Value with End-to-End Lifecycle Management

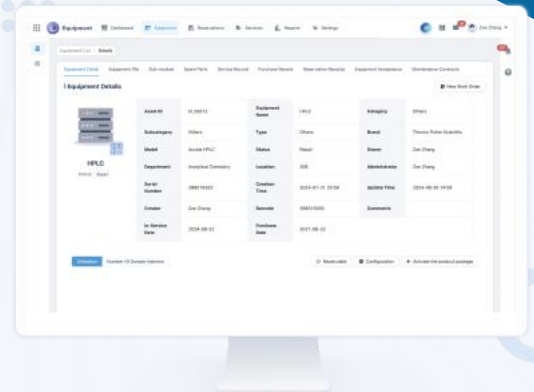
SciOne Equipment manages the entire lifecycle of your lab equipment, ensuring peak condition, minimizing downtime, and optimizing utilization.



## Key Features

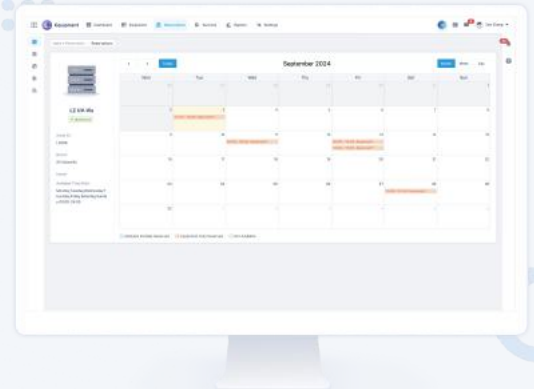
### Asset Ledger & Tracking

- Manage equipment lifecycle data from budgeting to disposal
- Provide built-in structures for accessories, service contracts, and documents
- Support definition of custom attributes



### Maintenance & Calibration

- Submit, assign, and track repair tasks
- Define regular maintenance schedules and generate tasks automatically
- Support customized workflows and data definitions



### Sharing & Scheduling

- Set rules and schedules for equipment sharing
- Schedule equipment usage with ease
- Support approval workflow definitions



### Data Analytics & Utilization

- Gain insights with advanced visualization tools
- Generate dashboards for assets, maintenance, and scheduling
- Track equipment utilization and identify usage patterns





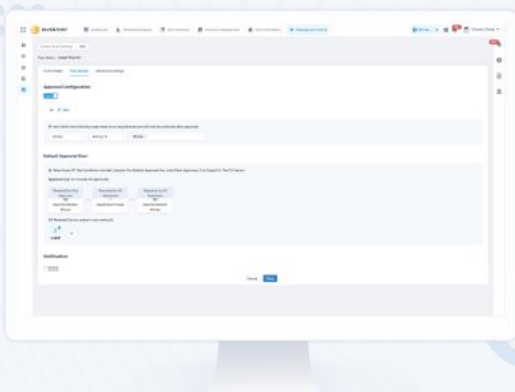
## Simplify Management & Compliance for Lab Chemicals & Consumables

SciOne Inventory simplifies tracking and reporting of inventory data, helps maintain a safe and compliant lab environment, and reduces waste by managing the entire lifecycle of lab chemicals, consumables, spares, and standards.

## Key Features

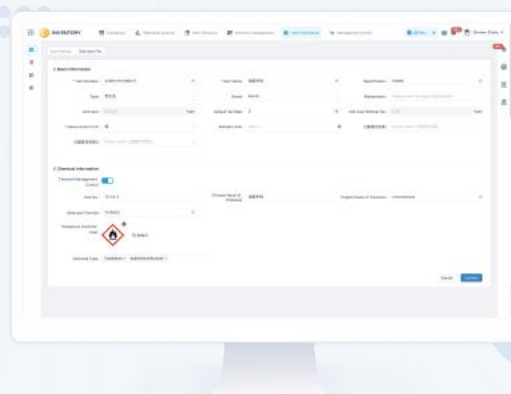
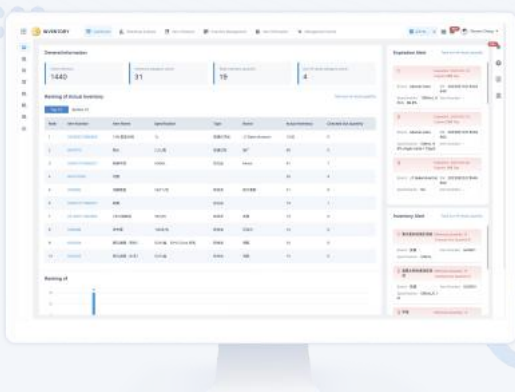
### Real-time Inventory Data

- Access real-time data on quantity and location
- Provide built-in lab-specific attributes and calculations
- Enable flexible definition of custom data attributes



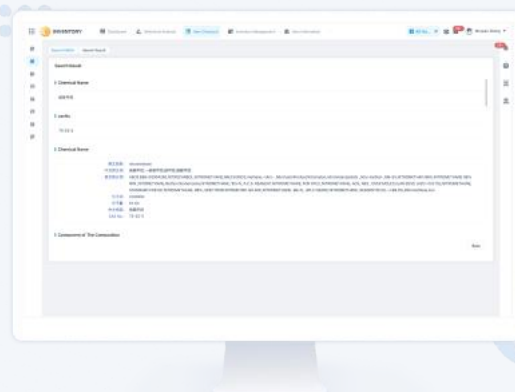
### Safety & Compliance

- Define hazardous materials
- Support searching and uploading of Safety Data Sheets (SDS)
- Maintain audit logs for check-outs and usage



### Full Lifecycle Control

- Manage stages from request, procurement, storage, usage, and disposal
- Configure settings for check-out approvals
- Define customized workflows



### Data Analytics & Alerts

- Gain insights with advanced visualization tools
- Monitor inventory status, turnover, and costs with dashboards
- Receive alerts for expirations, low levels, and late returns



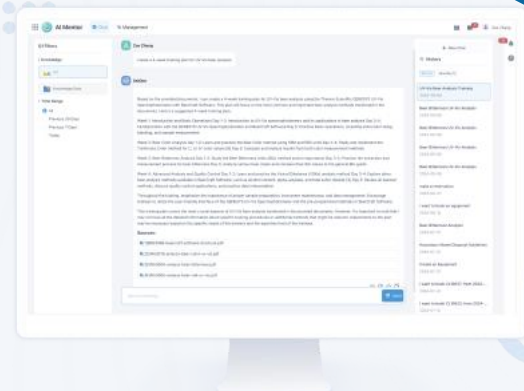
## Unlock the Power of Generative AI with Lab Enterprise Knowledge

SciOne Mentor uses Generative AI for rapid searches and tailored responses with your lab's data, centralizing knowledge for quick access, enhanced productivity, and effortless compliance.

## Key Features

### Generative AI for Labs

- Deliver personalized search and data retrieval for labs
- Access information on operating procedures, equipment usage, SDS, and testing notes quickly
- Generate intelligent recommendations by leveraging industry and enterprise-specific knowledge

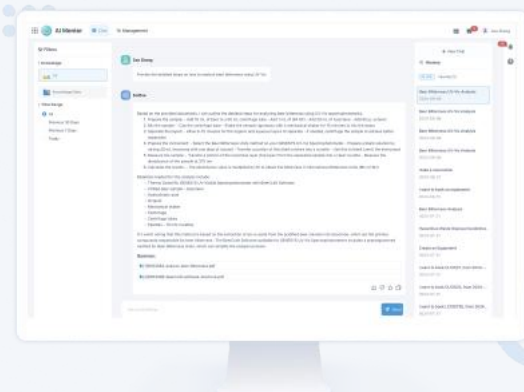


### Generative AI on Your Lab Data

- Seamlessly upload or retrieve your data with built-in connectors
- Reference original data sources directly within search results
- Implement guardrails for secure, enterprise-grade generative AI protection

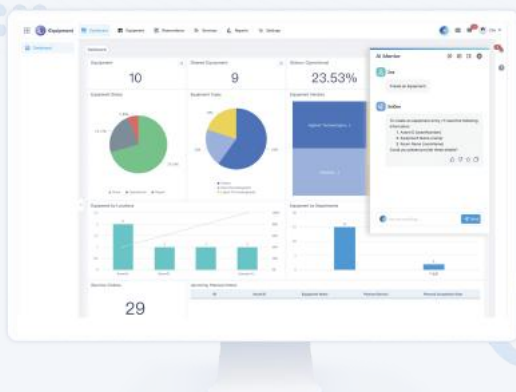
### Centralized Knowledge Management

- Access all lab knowledge in one unified platform
- Organize data into customized knowledge bases for easier management
- Enable effortless sharing and collaboration across teams



### Streamlined Action Interface

- Utilize an intuitive chat interface for streamlined actions
- Create, search, and view data instantly at your fingertips
- Engage with SciOne AI applications directly at the Point of Experience



“  
**Unlock the future of laboratory efficiency with SciOne AI  
– a comprehensive platform revolutionizing lab operations through  
advanced digitalization and artificial intelligence.**



### **SciOne Guardian**

Fully control your labs with monitoring & analytics



### **SciOne Equipment**

Maximize Lab Equipment Value with End-to-End Lifecycle Management



### **SciOne Inventory**

Simplified Management & Compliance for Lab Chemicals & Consumables



### **SciOne Mentor**

Unlock the power of Generative AI with Lab Enterprise Knowledge

## **Measurable Value**



#### **Cost Reduction**

- **25%** Reduction on Capital & Service Spent
- **25%** Less Inventory Waste



#### **Efficiency**

- **50%** Faster Data Retrieval
- **30%** Reduction in Admin Time



#### **Safety & Compliance**

- **40%** Reduction in Safety Risks
- **30%** Fewer Compliance Violations

## **Trusted by world class leaders in Life Science, Chemicals, Consumer Goods, and Testing, Inspection & Certification (TIC)**

Johnson & Johnson

BASF  
We create chemistry

MERCK

Givaudan

SGS

MARS

SUNTORY



Amway

JLABS  
Johnson & Johnson Consumer Inc.

 [www.scione.ai](http://www.scione.ai)  [contact@scione.ai](mailto:contact@scione.ai)

 SciOne Corp. 1200 Morris Turnpike, Suite 3005 Short Hills, NJ 07078



Scan QRcode for More Info