

\*ราคายังไม่รวม VAT 7% วันที่ -31 ธ.ค. 69

**พิเศษ**  
**15,900.-**  
(ปกติ 16,690.-)

(# VE0100)

B-BOX™ Blue Light LED Epi-illuminator

- LED light source lasts up to 50,000 hours
- 470 nm long wavelength, without any UV radiation
- Superior detection sensitivity:  
≤ 0.04 ng of DNA and ≤3 ng of protein

Specifications

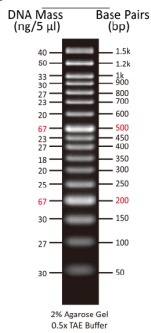
- Weight (kg) : 0.95 kg
- Wavelength of LED (nm) : 470
- Viewing Area (mm) : 158 x 96
- Dimension (mm) : 201.4 x 200 x 38

**Amber Goggles**  
**for B-Box™**



**B-Box™ Blue Light LED Epi-illuminator + Multi-angle Filter Plate**

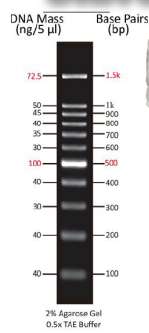
## DNA Ladder Marker



**DM1100**  
ExcelBand™ 50 bp  
500ul

Buy 5 Get 1  
Buy 10 Get 3  
Free!

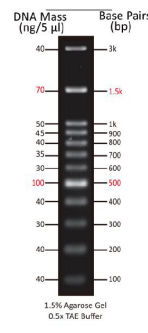
**1,750.-**



**DM2100**  
ExcelBand™ 100 bp  
500ul

Buy 5 Get 1  
Buy 10 Get 3  
Free!

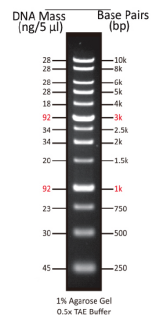
**1,290.-**



**DM2300**  
ExcelBand™ 100 bp+3K  
500ul

Buy 5 Get 1  
Buy 10 Get 3  
Free!

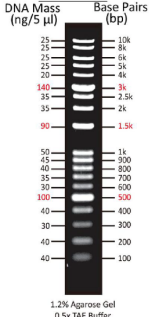
**990.-**



**DM3100**  
ExcelBand™ 1KB  
500ul

Buy 5 Get 1  
Buy 10 Get 3  
Free!

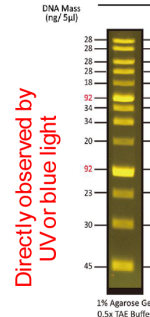
**1,150.-**



**DM3200**  
ExcelBand™ 1KB Plus  
(0.1-10 kb)  
500ul

Buy 5 Get 1  
Buy 10 Get 3  
Free!

**1,750.-**



**DM3160**  
FluoroBand™ 1 KB  
(0.25-10 kb)  
500ul

1,850.-  
**1,485.-**

**10%**

## Protein Ladder Marker



**PM1500**  
ExcelBand™ All Blue Regular  
Range (9-180 kDa)  
250ul x 2

Buy 5 Get 1  
Buy 10 Get 3  
Free!

**2,890.-**



**PM2500**  
ExcelBand™ 3-color Regular  
Range (9-180 kDa)  
250ul x 2

Buy 5 Get 1  
Buy 10 Get 3  
Free!

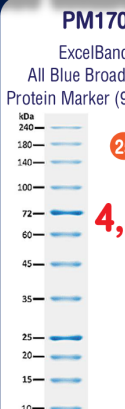
**3,450.-**



**PM2600**  
ExcelBand™ 3-color High  
Range (9-245 kDa)  
250ul x 2

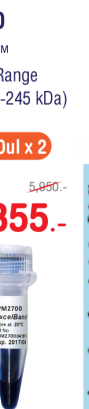
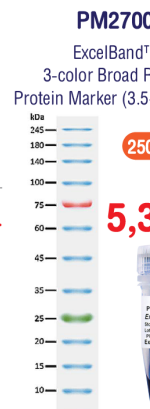
Buy 5 Get 1  
Buy 10 Get 3  
Free!

**3,950.-**



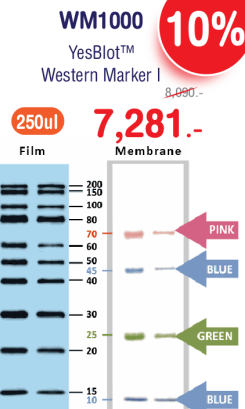
**PM1700**  
ExcelBand™ All Blue Broad Range  
Protein Marker (9-240 kDa)  
250ul x 2

4,890.-  
**4,401.-**



**PM2700**  
ExcelBand™ 3-color Broad Range  
Protein Marker (3.5-245 kDa)  
250ul x 2

5,890.-  
**5,355.-**



**WM1000**  
YesBlot™ Western Marker I  
250ul  
7,281.-

8,890.-

# DNA Loading Dyes

**DL2000** ExcelDye™ 6X DNA Loading Dye (Green)

DNA Mass (bp)    DL2000    Component

~4k    Xylene cyanol FF  
~50    Orange G

1% Agarose Gel, 0.5x TAE Buffer

~~2,090.-~~  
**1,881.-**

5ml x 2

**DL3000** ExcelDye™ 6X DNA Loading Dye (Blue)

DNA Mass (bp)    DL3000    Component

~4k    Xylene cyanol FF  
~500    Bromophenol blue

1% Agarose Gel, 0.5x TAE Buffer

~~2,090.-~~  
**1,881.-**

5ml x 2

**DL4000** ExcelDye™ 6X DNA Loading Dye (Tri-color)

DNA Mass (bp)    DL4000    Component

~4k    Xylene cyanol FF  
~500    Bromophenol blue  
~50    Orange G

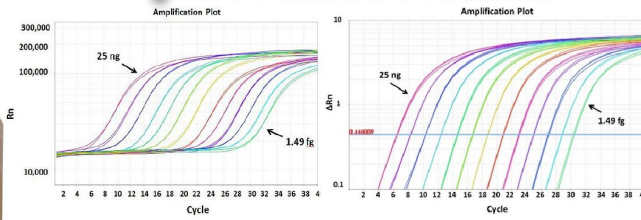
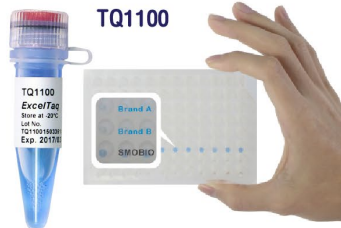
1% Agarose Gel, 0.5x TAE Buffer

~~2,090.-~~  
**1,881.-**

5ml x 2

**10%**

# qPCR Related Products



- ✓ High sensitivity and signal intensity
- ✓ With ROX reference dye
- ✓ Smart blue contrast dye as a visual aid for reaction setup
- ✓ Better compatibility for reverse transcription

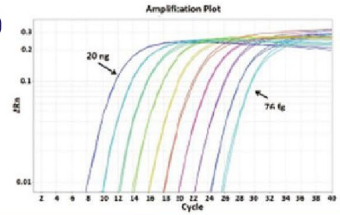
Q-PCR related product

**TQ1100** ExcelTaq™ 2X Q-PCR Master Mix (SYBR, no ROX), 200 RXN

**TQ1110** ExcelTaq™ 2X Q-PCR Master Mix (SYBR, ROX), 200 RXN

**TQ2110** ExcelTaq™ 2X Q-PCR Master Mix (TaqMan, ROX), 200 RXN

~~1,590.-~~  
**1,431.-**



# PCR Related Products

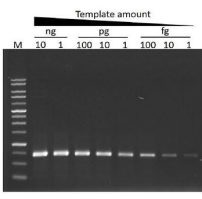
Standard PCR

**TP1000**

ExcelTaq™  
Taq DNA Polymerase  
5 U/μl, 500 U

Buy 5 Get 1  
Buy 10 Get 3  
**Free!**

**890.-**

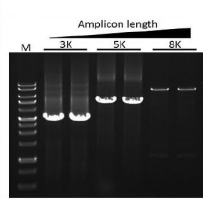


**TP1100**

ExcelTaq™  
5X PCR Master Mix  
200 RXN

Buy 5 Get 1  
Buy 10 Get 3  
**Free!**

**2,650.-**

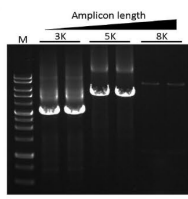


**TP1200**

ExcelTaq™  
5X PCR Master Dye Mix  
200 RXN

Buy 5 Get 1  
Buy 10 Get 3  
**Free!**

**2,650.-**

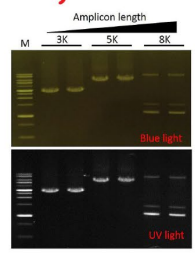


**TP1260**

ExcelTaq™ 5X Fluorescent  
PCR Master Mix, 200 RXN

**10%**

~~2,850.-~~  
**2,565.-**



Hot Start PCR

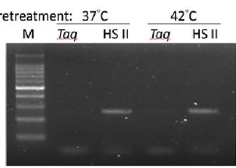
High sensitivity

**10%**

**TP5000**

ExcelTaq™ Hot Start II  
DNA Polymerase  
(5 U/μl), 500 U

~~2,190.-~~  
**1,971.-**



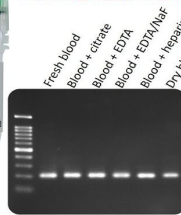
Extraction free PCR

**10%**

**TP2000**

ExcelTaq™ Blood Direct  
DNA Polymerase, 500 U

~~2,350.-~~  
**2,115.-**



**TP2100**

ExcelTaq™ 5X Blood Direct  
PCR Master Mix Kit  
200 RXN

~~3,690.-~~  
**3,321.-**

**10%**