

LAB EQUIPMENT
SUMMER SALE
NOW - 30 JUNE 2026

UP TO
10% OFF



- Benchmark Scientific
- Servicebio®
- ACCURIS INSTRUMENTS
- MICROLIT
- euromex microscopes holland
- AmScope™
- SCITEK
- BIO-GENER®

General Lab Equipment

Mini Dry Bath



BSH200, MyBlock™ Mini Dry Bath

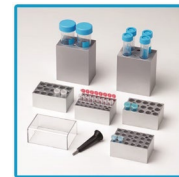
(# BSH200-E) MyBlock™ Mini Dry Bath, with block lifter (Blocks sold separately)
 • Exchangeable blocks for 0.2 to 50ml tubes
 Functions : **Heating**
 Temperature range Heating: **RT +5 to 100°C**

16,065.- (17,850.-)

BSH300, MyBlock™ Mini Dry Bath

(# BSH300-E) MyBlock™ Mini dry bath, with block lifter (Blocks sold separately)
 • Exchangeable blocks for 0.2 to 50ml tubes
 Functions : **Heating & cooling**
 Temperature range: **RT -25 to 100°C**

41,805.- (46,450.-)



**ราคาไม่รวม Block

Incubator



MyTemp™ Mini Digital Incubator

- Digital temperature control
- Accepts bottles and flasks up to 2 L
- Internal power outlet, for installation of small shakers, mixers or other instrumentation
- Dimensions: (w x d x h) : Interior 23.5 x 29 cm



(# H2200-HC-E) with heating and cooling
 Temp. Range : 15°C below ambient to 60°C

46,125.- (51,250.-)

(# H2200-H-E) with heating only
 Temp. Range : 5°C above ambient to 60°C

30,375.- (33,750.-)



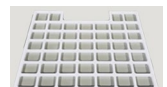
Built-in internal outlet

OPTIONAL ACCESSORIES



(# H3D1020-E) Mini Nutating Rocker, 8 x 6 in. platform

25,101.- (27,890.-)



(# H2200-SH) Extra Shelf 10.5 x 8"

2,475.- (2,750.-)



Normal Incubator

- C-IND : Digital Controller
- Double doors
- Height adjustable wire base plate
- Stainless steel SUS304
- Temp. Range Ambient+5°C to 60°C
- Digital Temp. controller & Digital display / PT1000
- Timer 99 Hours 59 min

(# C-IND1) Incubator (Digital) 30L

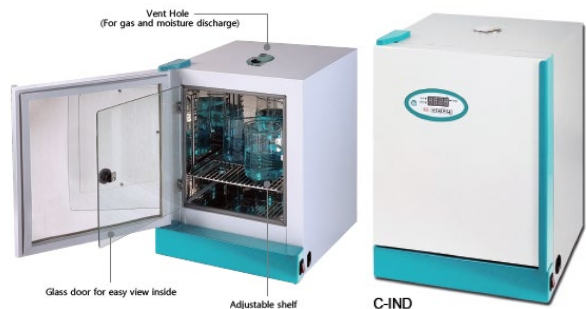
32,895.- (36,550.-)

(# C-IND2) Incubator (Digital) 72L

38,691.- (42,990.-)

(# C-IND3) Incubator (Digital) 150L

50,211.- (55,790.-)



Rotator



Roto-Therm™ Incubated Rotator

Ambient+5 to 60°C
 Speed : H2020 = 24rpm / H2024 = 5 to 70rpm



(# H2020-E) Roto-Therm™ Incubated Rotator with tube holders

33,885.- (37,650.-)

(# H2024-E) Roto-Therm™ Plus Incubated Rotator (variable speed) with tube holders

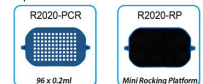
45,225.- (50,250.-)



Included Tube Holders:



Optional Tube Holders:



Roto-Mini [Plus Mixing Modes: Mix - Pause - Rock]



(# R2020-E) Roto-Mini™ Rotator with tube holders, Fixed speed of 24 rpm

20,205.- (22,450.-)

(# R2024-E) Roto-Mini™ Plus Variable Speed Rotator with tube holders, Adjust speed of 5 to 70rpm

24,255.- (26,950.-)



Includes

*Includes tube holders for 11x1.5/2.0, 5x5/7ml, 5x10/15, 6x50ml and 24x0.5ml tubes

General Lab Equipment

Shaker



Multi-functional Shake

- Three independent modes: Horizontal, Pendulum and 3D. In 3D mode, the mixing intensity can be set separately.
- Rust-proof treatment on the base plate for durability

DS-3D100 **22,491.-** (24,990-)



Incubator Shaker



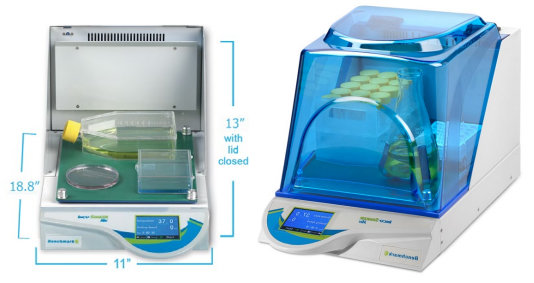
Incu-Shaker™ Mini

- Instantly exchange flask clamps with MAGIC Clamp™ accessories (PATENTED)
- Program STEP feature for linking consecutive programs
- Temperature : Ambient +5 to 70°C
- Speed : 30 to 300rpm



Maximum capacity of Erlenmeyer flasks

Flask Size:	Incu-Shaker Mini
50ml	20
125ml	12
250ml	8
500ml	5
1L	2
2L	0
3L	0



(# H1001-M-E) **177,615.-**
Incu-Shaker™ Mini with non-slip rubber mat (197,350-)

Constant Temperature Shaking Incubator SCITEK

- Shaking Speed : 20-300 rpm
- Temperature Range: RT+5-60°C
- ABS shell, polished stainless steel chamber.

#ICB-50BS (48L) **94,185.-** (104,650-)
50mlx20 or 100mlx9 or 250mlx12 or 500mlx9 or 1000mlx4

#ICB-20BS (18L) **60,021.-** (66,690-)
50mlx12 or 100mlx9 or 250mlx6

#ICB-80S (69L) **124,281.-** (138,090-)
100mlx20 or 250mlx16 or 500mlx9 or 1000mlx5 or 2000mlx4



Shaking Incubator



- Speed range : 30-400 rpm
- Material plate made form stainless steel
- Accurate temperature and speed control with Digital Temp Controller & Digital R.P.M Controller
- Excellent durability even for long time using low noise with D.C motor
- Built-in safety devices such as overload breakers, earth leakage breakers, and automatic stops when doors open

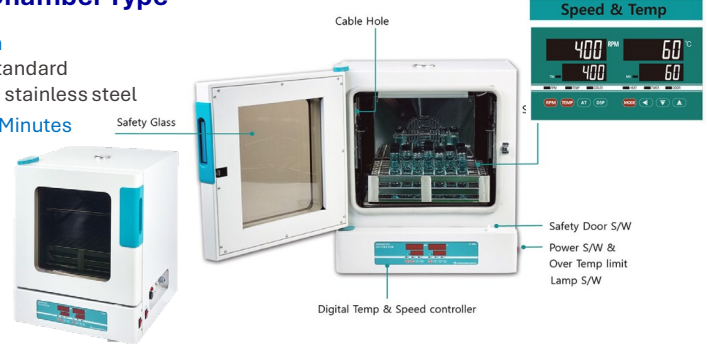


#C-SKI-1 : Temp = 10-60°C **115,425.-** (128,250-)

#C-SKI-2 : Temp = Ambient +5 - 70°C **86,571.-** (96,190-)

Shaking Incubator Chamber Type

- Speed range : 30-400 rpm
- Spring rack installed as standard
- Material plate made form stainless steel
- Time range : 99 Hours 59 Minutes
- Digital safety thermostat
- Auto tuning / Digital PI.D
- Temp calibration



#C-SKI-3 : Temp = Ambient +5 - 70°C **86,571.-** (96,190-)

#C-SKI-4 : Temp = Ambient +5 - 70°C **106,785.-** (118,650-)

#C-SKI-5 : Temp = 5 - 60°C **138,501.-** (153,890-)

Microscope

bScope



bscope



BS.1153-PLI



46,826.-
(49,290.-)

BS.1157-PLI



70,956.-
(74,690.-)

BS.1152-PLI



46,351.-
(48,790.-)

- Provided with APL (Antimicrobial Protection Layer)
- Microscopes for research and laboratories
- Monocular, binocular and trinocular models

BlueScope

(#BL.1152) BlueScope Bino 4/10/40/100 mechanical stage

BlueScope series are designed for education, universities and small laboratories.



- WF 10x/20 mm eyepieces
- Binocular and trinocular models
- Reversed quadruple nosepiece
- Plan and plan IOS objectives
- NeoLED™ illumination

26,363.-
(27,750.-)

bScope with HDS camera



BS.1153-PLI
bScope premium trino + (#VC.3024-HDS) bScope

83,900.-
(87,900.-)

StereoBlue



SB.1930

Trinocular Stereo zoom microscope StereoBlue, 0.7x to 4.5x zoom objective, magnification from 7x to 45x, ergonomically stand with incident and transmitted LED illumination

26,781.-
(28,190.-)



AmScope™

mScope B120C-R Series

USB-C Rechargeable Student Binocular Compound Microscope **40X-2500X** Magnification with 3D Two-Layer Mechanical Stage, Achromatic Objectives, & LED illuminator

12,911.-
(13,590.-)



(# M162C-2L-PB10-V287-3PL)

M162 Series Dual Light Monocular Compound Microscope
40x to 1000x Magnification range w/ 10x and 25x eyepieces
Monocular head, 45° incline, 360° rotatable
Forwarded triple revolving nosepiece
4x, 10x, 40x objectives
Plain stage w/ clips, 89mm x 89mm dimensions
Coaxial coarse and fine focus, mm X-Y fine focus precision
Single lens condenser w/ disc diaphragm
Variable-intensity LED illumination
External power supply, 220V/60Hz
Supplied with dust cover and power supply

AmScope™

7,268.-
(7,650.-)

Molecular Lab Equipment



Thermal cycler (PCR)

Thermal Cycler – non Gradient

- Holds 16 x 0.2 ml PCR Samples
- 7" HD Color Touchscreen Displays
- Onboard Computer - No PC or Smartphone Required!
- Edvotek PCR Programs Included + Storage for 100 More
- **Heated Lid** Prevents Sample Evaporation
- Temperature Range: 14-99°C
- Maximum Ramp Rate: 3.5° C/sec
- Instant Incubate Function
- High Precision Algorithm for Superior Results

16x0.2 Samples



(#540) EdvoCycler™ Jr.
Personal PCR Machine



47,025.-

(52,250.-)

48x0.2 Samples

(541-542)
EdvoCycler™ 2
PCR Machine



116,811.-

(129,790.-)



Thermal Cycler - Gradient



- Large 10-inch touch screen interface
- Advanced Peltier technology ensures rapid heating and cooling with uniform temperature distribution across all wells
- Temperature accuracy of ±0.1°C and uniformity of ±0.2°C guarantee reproducible results
- Easy programming and real-time status monitoring with up to 1,000+ programmable protocols
- Compatible with common 96-well PCR plates (no skirt, full skirt, half skirt), 0.2mL PCR tubes and PCR tube strips

TC2000-G1



(# 5034102400)

(158,050.-)

142,245.-

TC2000-G2



(# 5034112400)

(201,550.-)

181,395.-

TC2000-G3



(# 5034122400)

(328,050.-)

205,245.-



Real Time - PCR



Q9600Pro Real-Time PCR

- 96 samples 6 fluorescent channels are scanned within 5S
- With 12.1-inch touchscreen, real-time monitoring of operating conditions
- Fluorescence side scan technology
- Powerful software analysis functions
- Strong fluorescence signal, low background noise and high sensitivity



(# Q9602pro) Q9600 series Real time PCR ,96x0.2ml two channel

611,010.-

(678,900.-)



(# Q9604pro) Q9600 series Real time PCR ,96x0.2ml four channel

692,910.-

(769,900.-)

(# Q9606pro) Q9600 series Real time PCR ,96x0.2ml six channel

773,910.-

(859,900.-)

Q3200 Real-Time PCR

- Dual block
- Rapid Test
- Real Time PCR
- One Device Dual Uses
- Can be used for real-time detection in pasture, forest farm, breeding farm and water source.



(# Q3202-F) Double Block 32 well Real time PCR ,16x2x0.2ml **two channels**

350,910.-

(389,900.-)

(# Q3204-F) Double Block 32 well Real time PCR ,16x2x0.2ml **four channels**

391,410.-

(434,900.-)

Q1600 Real-Time PCR



(# Q1601) Double Block 16 well Real time PCR Detection System ,8x2x0.2ml **One channel**

188,010.-

(208,900.-)

(# Q1602) Double Block 16 well Real time PCR Detection System ,8x2x0.2ml **two channel**

228,510.-

(253,900.-)

(# Q1604-F) Q3200-F Real time PCR, 8x2x0.2ml **four channels**

301,410.-

(334,900.-)

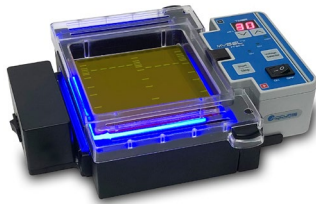


Molecular Lab Equipment

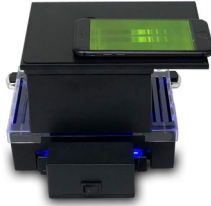
Gel Electrophoresis System



MyGel InstaView Systems



Imaging enclosure



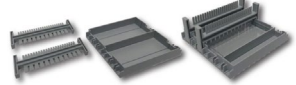
(# E1201-E) myGel InstaView™ system, includes gel tank with orange filter, direct connect power supply, E1200-CS1 casting set, Mini SmartBlue Transilluminator and imaging enclosure

(# E1200-CS1) Extra casting set for 10.5x10cm and 10.5x6cm gels. Includes stand, trays, E1101-COMB1 double-sided combs

(54,850.-)

49,365.-

Includes



Included Casting Set

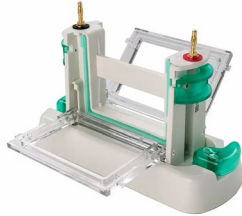
(# E1101-COMB1) Reversible Combs, 22/12 teeth, for E1101-CS1 Casting Stand, pk 2

- Features**
- View DNA migration and separation as it happens
 - Blue light illumination – won't damage DNA
 - Capture high resolution images without removing the gel from the tank

Electrophoresis system (Vertical Type)



Servicebio®



- Using the in-situ gel-making mode, the gel-making and running process can be completed without disassembling and assembling the electrophoresis glass
- The glue base is specially designed and locked by non-spring buckles to avoid glue leakage
- The uniquely designed card can be sealed by squeezing the sealing strip, avoiding the phenomenon of liquid leakage due to the side card not being lifted in place.
- Gel thickness: 1.5mm, 1mm , 0.75mm
- Requires less electrophoresis buffer, and a minimum of 300mL can complete electrophoresis experiments.

SVE-2 : 2 Gels

16,293.-

(17,150.-)

SVE-4 : 4 Gels

17,623.-

(18,550.-)

(# SVT-2) Electrophoresis System (Transfer)

- Dimensions (LxWxH) 185x108x125
- Transfer size 70x90
- Max. volume of buffer: 500 ml
- Double plate structure, can be used with SVE-2 electrophoresis tank.
- The tank of the instrument is integrated injection molding with high transparency polycarbonate, which has corrosion resistance, high transparency, consistent performance, etc.
- High transfer efficiency, transfer time is about 20-40min.

SVT-2 : 2 Gels

12,816.-

(13,490.-)

SVT-4 : 4 Gels

14,621.-

(15,390.-)

Simultaneous Transfer of 2 Gels



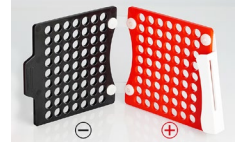
Servicebio®



Transfer Clamp*2
Trans-blot Module*1
Electrophoresis Tank*1

2 pcs Tranfer Sponge*2
Transfer Filter Paper (50 pcs/bag) *1

Distinctive Positive & Negative Poles of Transfer Clip



Transilluminator

TruBlu™2 Blue/White Light Transilluminator

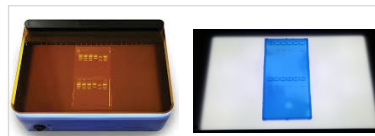
- High Density LED Dual Blue/White Light Modes
- Large Viewing Surface: 27 x 15 cm
- Orange Contrast Lid
- Safe - Non-UV Wavelength
- Built-in Fan Minimizes Condensation
- Blue Light Emission Spectrum = 470 nm
- Universal Voltage for Worldwide Use

(25,290.-)

22,761.-

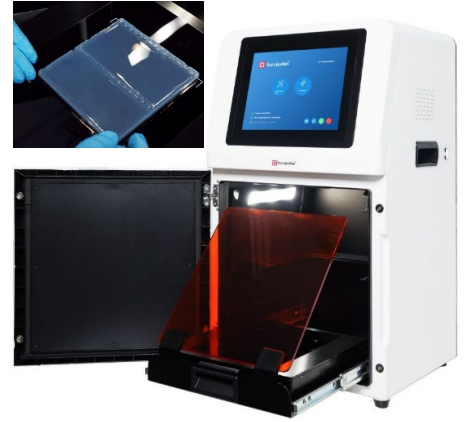


2 in 1 (Blue & White)

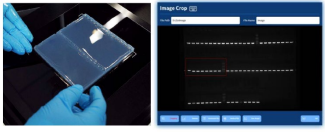


Molecular Lab Equipment

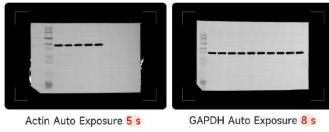
Gel documentation



Nucleic Acid Gel



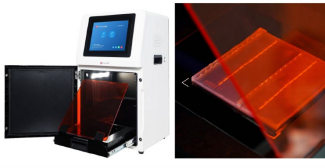
Blotting Film



Protein Gel



Gel Cutting



Imaging system

Chemiluminescence Imaging System :

1. Weak band signal, one-time imaging
2. Both strong and weak band signals can be achieved, and the desired results can be obtained
3. Source file can be saved, and the image can be adjusted at any time
4. High Efficient

Gel Imaging System:

Three modes and multiple parameters can be flexibly adjusted, resulting in clear and bright imaging UV laser protective board, safe and convenient for gel cutting

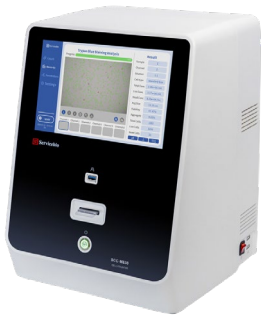
Cat. No.	SCG-W5000	SCG-W3000 PLUS	SCG-W1000
Dimension	400x371x700 mm	400x371x700 mm	400x371x700 mm
Camera	Depth-cooled high sensitivity camera	Depth-cooled high sensitivity camera	High-sensitivity camera
Resolution	3000x3000, 9 megapixels	2992x3000, 9 megapixels +2992x3000, 45 megapixels	3072x2048, 6.3 megapixels
Pixel	3.76x3.76 µm	3.76x3.76 µm	2.4x2.4 µm
Shooting Area	Effective field of view for blotting film/protein gel : 136x136 mm (can be expanded to 200x200 mm if required); Effective field of view for nucleic acid gel: 200x200 mm.	Blotting Membrane Effective field of view: 136x136 mm	Nucleic Acid Gel / Protein Gel 140x140 mm
Cooling Temperature	Relative ambient temperature -40°C	Relative ambient temperature -40°C	-
Light Source	Bright-field Light Source: Downward facing LED white light source, symmetrically distributed on both sides, UV Light source: 310nm LED array for uniform transmission illumination.	Downward-facing LED white light source, symmetrically distributed on both sides.	Bright-field Light Source: Downward-facing LED white light source, symmetrically distributed on both sides. UV Light Source: 310 nm LED array for uniform transmission illumination.

526,185.-
(584,650.-)

488,601.-
(542,890.-)

187,965.-
(208,850.-)

Cell Counter



Cell Counter

SCC-M630

(439,650.-)

125,685.-

Precise Counting

6-Well High Throughput

Trypan Blue Staining Analysis

Parameter	Value
Sample	2
Channel	2
Shutter	1/4
Cell type	Standard Size
Total Conc.	2.20e+06/mL
Live Conc.	2.17e+06/mL
Dead Conc.	3.20e+05/mL
Avg Size	18.25µm
Viability	100.0%
Aggregate	5.82%
Total Cells	1392
Live Cells	1269
Dead Cells	123

Auto-Focus Auto-Calibration
Simpler Operation
Clearer Imaging
More Accurate Counting

3 Fields of View Per Sample
Effectively avoids counting inaccuracies caused by sample unevenness

Suitable for various cell types and applications

Comprehensive Data Analysis Detailed Information Reports



Dual Fluorescence Counting & Transfection Efficiency Calculation



Fluorescence Cell Counter

SCC-F1000

(426,550.-)

383,895.-

AO/PI

Parameter	Value
Sample	4
Channel	4
Dilution	1:1
Cell type	Standard Size
Total Conc.	2.73e+06/mL
Live Conc.	2.09e+06/mL
Dead Conc.	6.39e+05/mL
Avg Size	19.94µm
Viability	76.55%
Aggregate	32.28%
Total Cells	1335
Live Cells	1022
Dead Cells	313
Exposure(S)	400
Exposure(R)	150

Molecular Lab Equipment

Automatic Nucleic Acid Extractor



(# Y-16) 16-channel



(# Y-48) 48-channel

มีชุดสกัด DNA/RNA สำหรับตัวอย่างหลากหลาย

(# Y-16) 16-channel
195,435.-
(217,150.-)

(# Y-48) 48-channel
404,865.-
(449,850.-)

High Throughput

Extract Up To
48 Samples
In One Run

High Recovery

≥99% Magnetic Bead
Recovery For
Superior Yield

Tissue homogenizer

BeadBug™ 3 Microtube homogenizer

- Homogenize 1, 2 or 3 tubes simultaneously
- Speed Range : 2800 to 4000rpm
- Capacity : 3 x 2.0ml (Screw cap / non-skirted)
- Timer : 3 sec. to 3 min

(# D1030-E) BeadBug™ 3 Microtube homogenizer



49,995.-
(55,550.-)



Max. Capacity up to 3 x 2.0ml

BeadBug 6, Six Position Homogenizer

- Homogenize up to 6 tubes simultaneously
- Speed Range: 2500 to 4350rpm
- Capacity: 6 x 2.0ml (Screw cap / non-skirted)
- Timer: 1 sec. to 90 sec. with up to 10 cycles

(# D1036-E) BeadBug 6, Six Position Homogenizer



137,061.-
(152,290.-)



6 x 2.0ml Capacity

(# SWE-C6) Tissue Homogenizer (Vertical) Room Temperature



Adapter for SWE-C6



Base/Cover/Lock

135,315.-

(150,350.-)

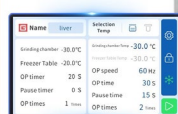
- 1.Linear guide rail, stable and durable, capable of continuous grinding for 24 hours
- 2.Capable of processing up to 96 samples simultaneously (standard configuration of 24 samples)
- 3.Adapter module can be pre-cooled at low temperature to reduce sample degradation
- 4.Multiple adapters are optional
- 5.Compact and sleek appearance

(# SWE-3D) 3D Tissue homogenize low temperature



Minimum Refrigeration Temp. -50°C

Full Low Temperature Grinding. Reduce the Degradation of Protein, RNA



Multiple Adapters Available



(367,490.-)

330,741.-

Liquid Handling

Bottle Top Dispenser

MICROLIT

SCITUS Bottle Top Dispenser
a simple, cost-effective

(# SCI-2.5) 0.25-2.5 mL
(# SCI-5) 0.5-5 mL
(# SCI-10) 1-10 mL

SALE PRICE 6,111.- (6,790.-)

(# SCI-30) 2.5-30 mL
(# SCI-60) 5-60 mL

SALE PRICE 7,191.- (7,990.-)

(# SCI-100) 10-100 mL

SALE PRICE 8,145.- (9,050.-)



BEATUS Bottle Top Dispenser with Recirculation Valve and Springless Valve® Technology. 

(# BEAT-2.5) 0.25-2.5 mL
(# BEAT-5) 0.5-5 mL
(# BEAT-10) 1-10 mL

SALE PRICE 7,335.- (8,150.-)

(# BEAT-30) 2.5-30 mL
(# BEAT-60) 5-60 mL

SALE PRICE 8,595.- (9,550.-)

(# BEAT-100) 10-100 mL

SALE PRICE 9,801.- (10,890.-)



LENTUS® Bottle Top Dispenser
for dispensing Hydrofluoric Acid, high-purity media and acids & bases.

(# LNT-HF-2.5) 0.25-2.5 mL
(# LNT-HF-5) 0.5-5 mL
(# LNT-HF-10) 1-10 mL

SALE PRICE 24,435.- (27,150.-) 

(# LNT-HF-30) 2.5-30 mL
(# LNT-HF-60) 5-60 mL

SALE PRICE 28,521.- (31,690.-)



ULTIMUS Bottle Top Dispenser
with Dual Inlet® Technology 

(# ULT-2.5) 0.25-2.5 mL
(# ULT-5) 0.5-5 mL
(# ULT-10) 1-10 mL

SALE PRICE 8,991.- (9,990.-)

(# ULT-30) 2.5-30 mL
(# ULT-60) 5-60 mL

SALE PRICE 10,611.- (11,790.-)



E-BURETTE
(With Motorised Piston and One-Touch One-Drop Dispensing)

(# TI-10) 10 mL
(# TI-25) 25 mL
(# TI-50) 50 mL

SALE PRICE 44,811.- (49,790.-) 



E-DISPENSER
(# ED-50) Electronic Dispenser with automatic Single, Stepper and Sequential Dispensing + Electronic Burette, 50 mL

SALE PRICE 53,775.- (59,750.-)



Peristaltic Pump

Speed Variable Peristaltic Pump
(304 Stainless Steel Housing)

(# MP100B) 0.1-150 RPM **46,665.-** (51,850.-)

(# MP300B) 0.1-310 RPM **81,135.-** (90,150.-)

(# MP600B) 0.1-600 RPM **143,505.-** (159,450.-)




Clever Flow Peristaltic Pump
(304 Stainless Steel Housing)

(# MP100C) 0.1-150 RPM **65,115.-** (72,350.-)

(# MP300C) 0.1-310 RPM **94,365.-** (104,850.-)

(# MP600C) 0.1-600 RPM **121,941.-** (135,490.-)



Intelligent Dispensing Peristaltic Pump
(304 Stainless Steel Housing)

(# MP100I) 0.1-150 RPM **109,971.-** (122,190.-)

(# MP300I) 0.1-310 RPM **115,281.-** (128,090.-)

(# MP600I) 0.1-600 RPM **166,365.-** (184,850.-)



Accessories

Hand Dispenser MP – HD

9,135.- (10,150.-)



Footswitch MP – FS

3,645.- (4,050.-)



Lab Freezer, Refrigerator



Pharmacy refrigerator, 2~8°C



MC-5L126
(126L)

SALE PRICE
38,610 U.*
(List Price 42,900.-)



MC-5L416
(416L)

SALE PRICE
74,610 U.*
(List Price 82,900.-)



MC-5L606
(606L)

SALE PRICE
105,210 U.*
(List Price 116,900.-)



MC-5L1006
(1006L)

SALE PRICE
144,810 U.*
(List Price 160,900.-)

Freezer, -40~86°C



MD-86L108
(108L)

SALE PRICE
195,210 U.*
(List Price 216,900.-)

Biomedical deep freezer, -20~-40°C

MD-40L106
(106L)



SALE PRICE
58,410 U.*
(List Price 64,900.-)



MD-40L308
(308L)

SALE PRICE
85,410 U.*
(List Price 94,900.-)

Combined refrigerator and freezer



Temperature range Fridge: 2°C ~ 8°C
Freezer: -10°C ~ -25°C
Total: 350L, Fridge: 206L, Freezer: 144L

MCD-25L506

SALE PRICE
121,410 U.*
(List Price 134,900.-)

Temperature range Fridge: 2°C ~ 8°C
Freezer: -20°C ~ -40°C
Total: 506L, Fridge: 247L, Freezer: 259L

MCD-40L506

SALE PRICE
134,010 U.*
(List Price 148,900.-)

Blood Bank Refrigerator, 4±1°C



MXY-206
(206L)

SALE PRICE
145,710 U.*
(List Price 161,900.-)



MXY-558
(558L)

SALE PRICE
247,410 U.*
(List Price 274,900.-)



MXY-1306
(1306L)

SALE PRICE
329,310 U.*
(List Price 365,900.-)

DualX Ultra Low freezer, -40~86°C



MD-86L580BS
(580L)

SALE PRICE
341,010 U.*
(List Price 378,900.-)



MD-86L860BS
(860L)

SALE PRICE
593,910 U.*
(List Price 659,900.-)