

SPECIAL OFFER
SALE
UP TO 10% OFF

Lab Equipment for Medical Laboratory.



Chemical Reagent

- Pathogen Reagent
- Crystal Violet / Basic Fuchsin

Pathology

- Slide Scanner
- Marking System
- Microtome
- Embedding & Cooling
- Decalcification
- Antigen Retrieval

Molecular

- Extractor
- Cell Counter
- Real Time PCR
- Microplate Reader
- Gel Documentation

Consumable

- Pasticware
- Glassware

General Lab Equipment

- Microscope
- Centrifuge
- Liquid Handling
- Oven / Incubator
- Tube Roller, Shaker, Rotator
- Liquid Nitrogen Tank
- Microplate Shaker / Vortex
- Autoclave
- Rotary Evaporator
- Hotplate Stirrer / Shaking Incubator
- pH Meter

SPECIAL OFFER
SALE
UP TO 10% OFF

SMART SCIENCE
Smart Science co.,Ltd.

WHX WORLD HEALTH EXPO

Now - 30 Sep 2026

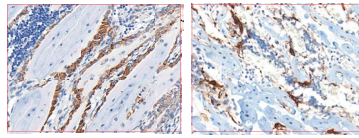
* ราคายังไม่รวม VAT 7%

Pathology

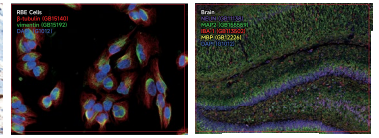
Digital Pathology Slide Scanner



Brightfield Scanning



Fluorescence Scanning



20X, 40X BF, FL

- ✓ High-throughput scanning capacity with up to **150 slides** and **99-layer** scanning capability
- ✓ Advanced imaging technology supporting both **Brightfield** and **Fluorescence** applications
- ✓ Integrated AI-assisted analysis software for faster, smarter, and more efficient diagnostics

- (# LG-S80) Bright field Slide Scanner 80-channel
- (# LG-FS80) Brightfield + Fluorescence Slide Scanner 80-channel
- (# LG-S150) Bright field Slide Scanner 150-channel
- (# LG-FS150) Brightfield Fluorescence Slide Scanner 150-channel

*ราคาสอบถามฝ่ายขาย

Marking System

laser marking technology for accurate and reliable identification on glass slides, cassettes, cryogenic tubes, and centrifuge tubes.

- 15ml, 50ml Centrifuge Tube
- 1.5ml, 2.0ml Centrifuge Tube
- Embedding Cassette
- Microscope Slide
- Cryogenic Vial



Slide Marking System

ZY-A100

(640,050.-)

570,000.-



Multi-function Marking System

ZY-D200

(653,090.-)

590,000.-



Auto Decalcification System

SDH-5 (5L)

SDH-10 (10L)

(391,850.-)

*ราคาสอบถามฝ่ายขาย

360,000.-



Compatible with Various Centrifuge Tubes

Customizable to Specific Needs

- ✓ 10/15mL x 20
- ✓ 50mL x 12
- ✓ 5mL x 12

Makes the decalcification process easier, more convenient, and faster, delivering beautifully prepared tissue samples.



Decalcification Solution Submerged Sample

SPECIAL OFFER
SALE
UP TO 10% OFF

SMART SCIENCE
Smart Science co.,Ltd.

WHX WORLD HEALTH EXPO

Now - 30 Sep 2026

* ราคายังไม่รวม VAT 7%

Pathology

Antigen Retrieval System



For IHC, IF



ARI-4

(195,950.-)

180,000.-

Servicebio®

Tissue processor

For dehydration of fixed animal and plant tissues, with a single processing capacity of 405 samples.

ATD-405

*ราคาสอบถามฝ่ายขาย



Tissue Homogenizer (Vertical) Room Temperature

SWE-C6

(150,350.-)

135,315.-



3D Tissue Homogenizer Low Temperature



สามารถทำอุณหภูมิได้ต่ำสุดที่ -50°C
ช่วยลดการ Degradation ของ Protein และ RNA

Name	Liver	Selection Temp	
Grinding chamber	-30.0°C	Grinding chamber Temp	-30.0°C
Freezer Table	-20.0°C	Freezer Table Temp	-20.0°C
OP timer	20 s	OP speed	6 m/s
Pause timer	0 s	OP time	30 s
OP times	1 Times	Pause time	15 s
		OP times	2 Times

SWE-3D

(367,490.-)

330,741.-

- Linear guide rail, stable and durable, capable of continuous grinding for 24 hours
- Capable of processing up to 96 samples simultaneously (standard configuration of 24 samples)
- Adapter module can be pre-cooled at low temperature to reduce sample degradation
- Multiple adapters are optional
- Compact and sleek appearance

Multiple Adapters Available



Cat. No.	Beads Output Per Time (Piece)	Volume (Piece)
SYM-02Z	1, 2, 3, 4, 5	2000
SYM-03Z	1, 2, 3, 4	600
SYM-04Z	1, 2, 3	400

Paraffin Microtome

PM-24

(404,950.-)

370,000.-



Compatible with embedding, cassettes, and paraffin blocks.

Paraffin Embedding Station

SWE-JBL5

(156,750.-)

143,000.-

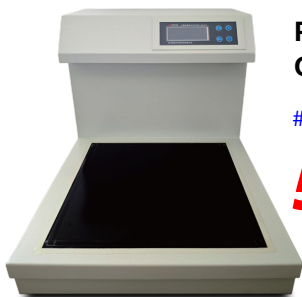


Paraffin Embedding Cold Plate

SWE-JBL5T

(55,550.-)

53,000.-

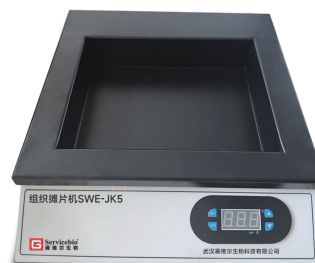


Tissue Flotation Bath

SWE-JK5

(47,050.-)

45,000.-



SPECIAL OFFER
SALE
UP TO 10% OFF

SMART SCIENCE
Smart Science co.,Ltd.

WHX WORLD HEALTH EXPO

Now - 30 Sep 2026

* ราคายังไม่รวม VAT 7%

Molecular

Automatic Nucleic Acid Extractor

Fully Automatic Nucleic Acid Extractor
Applicable to a Wide Variety of Samples

Servicebio®

High Throughput

Extract Up To
48 Samples
In One Run

High Recovery

≥99% Magnetic Bead
Recovery For
Superior Yield



Y16 (16-Channel)

195,435.-

(217,150.-)

Y48 (48-Channel)

404,865.-

(449,850.-)

Nucleic Acid Extraction – Total RNA Extraction – Plant Tissue

- G3752-48T MagBind Plant Genomic DNA Extraction Kit (Prepackaged 48T)

Nucleic Acid Extraction – Total RNA Extraction – Animal Tissue

- G3690-48T MagBind Animal Tissue Total RNA Extraction Kit (Prepackaged 48T)
- G3694-48T MagBind Cell Total RNA Extraction Kit (Prepackaged 48T)

Nucleic Acid Extraction – Total RNA Extraction – Bacteria/Virus

- G3696-48T MagBind Virus DNA/RNA Extraction Kit (Prepackaged 48T)
- G3699-48T MagBind Bacterial Total RNA Extraction Kit (Prepackaged 48T)

Nucleic Acid Extraction Genomic DNA Extraction – Animal Tissue/Cells/Blood

- G3691-48T MagBind Animal Tissue Genomic DNA Extraction Kit (Prepackaged 48T)
- G3693-48T MagBind Blood Genomic DNA Extraction Kit (Prepackaged 48T)
- G3695-48T MagBind Cell Genomic DNA Extraction Kit (Prepackaged 48T)

Nucleic Acid Extraction – Total RNA Extraction – Blood

- G3692-48T MagBind Blood Total RNA Extraction Kit (Prepackaged 48T)

Nucleic Acid Extraction – Free DNA Extraction – Serum/Plasma

- G3697-48T MagBind Bacterial Genomic DNA Extraction Kit (Prepackaged 48T)
- G3698-48T MagBind Serum/Plasma Free DNA Extraction Kit (Prepackaged 48T)



Precise Counting

6-Well High Throughput

Cell Counter

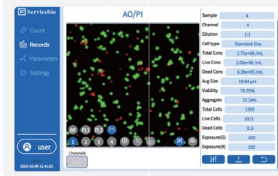
SCC-M630

(139,650.-)

125,685.-



Dual Fluorescence Counting
& Transfection Efficiency
Calculation



Fluorescence Cell Counter

SCC-F1000

(426,550.-)

383,895.-

Chemiluminescence Imaging System

Chemiluminescence Imaging System :

- Weak band signal, one-time imaging
- Both strong and weak band signals can be achieved, and the desired results can be obtained
- Source file can be saved, and the image can be adjusted at any time
- High Efficient

Gel Imaging System:

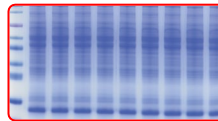
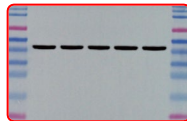
Three modes and multiple parameters can be flexibly adjusted, resulting in clear and bright imaging UV laser protective board, safe and convenient for gel cutting



Protein Gel/Membrane

Color WB Membrane Imaging

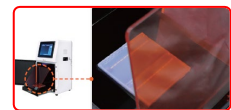
Color Protein Gel Imaging



Nucleic Acid Gel

Nucleic Acid Gel Imaging

Nucleic Acid Gel Cutting



Cat. No.	SCG-W5000	SCG-W3000 PLUS	SCG-W1000
Dimension	400x371x700 mm	400x371x700 mm	400x371x700 mm
Camera	Depth-cooled high sensitivity camera	Depth-cooled high sensitivity camera	High-sensitivity camera
Resolution	3000x3000, 9 megapixels	2992x3000, 9 megapixels +2992x3000, 45 megapixels	3072x2048, 6.3 megapixels
Pixel	3.76x3.76 μm	3.76x3.76 μm	2.4x2.4 μm
Shooting Area	Effective field of view for blotting film/protein gel : 136x136 mm (can be expanded to 200x200 mm if required); Effective field of view for nucleic acid gel: 200x200 mm.	Blotting Membrane Effective field of view: 136x136 mm	Nucleic Acid Gel / Protein Gel 140x140 mm
Cooling Temperature	Relative ambient temperature -40°C	Relative ambient temperature -40°C	-
Light Source	Bright-field Light Source: Downward facing LED white light source, symmetrically distributed on both sides, UV Light source: 310nm LED array for uniform transmission illumination.	Downward-facing LED white light source, symmetrically distributed on both sides.	Bright-field Light Source: Downward-facing LED white light source, symmetrically distributed on both sides. UV Light Source: 310 nm LED array for uniform transmission illumination.

526,185.-

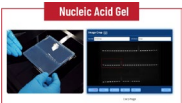
(584,650.-)

488,601.-

(542,890.-)

187,965.-

(208,850.-)



SPECIAL OFFER
SALE
UP TO 10% OFF

SMART SCIENCE
Smart Science co.,Ltd.

WHX WORLD HEALTH EXPO

Now - 30 Sep 2026

* ราคายังไม่รวม VAT 7%

Molecular

Microplate Reader

BGMR-1000 Microplate Reader

- 10.1-inch touch screen, can operate, store, print without external computers
- Panel visualization operation, data displayed completely
- 8-channel optical filter measurement system, you can manually replace the filter
- You can measure the end point method, dynamics, suppression rate, etc.
- Three linear vibration board functions
- The reagent is open and there is no specific restrictions.
- Store standard curve automatically, users can correct the standard curve
- Choose auction of inhalation, CUT-OFF qualitative calculation, single-point fixed standard, folding line regression, linear regression, index return, pair return, double-pair regression,
- log-logit, power regression, four parameter regression, and other calculation methods Provide a variety of printing methods and reports, and can customize various reports Layout and import functions, greatly improving the test efficiency.



(171,900.-)
154,710.-



BIO-GENER®

BGMR-2000 Full-wavelength Microplate reader

- BGMR-2000
- Easy Operation
- Convenient And Efficient
- The detection wavelength is 200-1000nm
- Supports 96-well and 384-well plates
- It has cuvette and fluorometer functions.



(524,900.-)

472,410.-

Real-Time PCR

Q9600Pro Real-Time PCR

- 96 samples 6 fluorescent channels are scanned within 5S
- With 12.1-inch touchscreen,
- real-time monitoring of operating conditions
- Fluorescence side scan technology
- Powerful software analysis functions
- Strong fluorescence signal, low background noise and high sensitivity

BIO-GENER®



(# Q9602pro) Q9600 series Real time PCR ,96x0.2ml two channel

(678,900.-)
611,010.-

(# Q9604pro) Q9600 series Real time PCR ,96x0.2ml four channel

(769,900.-)
692,910.-

(# Q9606pro) Q9600 series Real time PCR ,96x0.2ml six channel

(859,900.-)
773,910.-



Q3200 Real-Time PCR

- Dual block
- Rapid Test
- Real Time PCR
- One Device Dual Uses
- Can be used for real-time detection in pasture, forest farm, breeding farm and water source.



(# Q3202-F) Double Block 32 well Real time PCR ,16x2x0.2ml **two channels**

(389,900.-)
350,910.-

(# Q3204-F) Double Block 32 well Real time PCR ,16x2x0.2ml **four channels**

(434,900.-)
391,410.-

Q1600 Real-Time PCR



(# Q1601) Double Block 16 well Real time PCR Detection System ,8x2x0.2ml **One channel**

(208,900.-)
188,010.-

(# Q1602) Double Block 16 well Real time PCR Detection System ,8x2x0.2ml **two channel**

(253,900.-)
228,510.-

(# Q1604-F) Q3200-F Real time PCR, 8x2x0.2ml **four channels**

(334,900.-)
301,410.-



Thermo Cycle (PCR)

HCM100-Pro Thermo Mix

heating, cooling, mixing (magnetic mounting, self-calibration)
110V/220V/50Hz/60Hz EUPlug

(# 5062103300)

(61,250.-)
55,125.-



DUAB

Thermal Cycler Gradient (110V/220V/50Hz/60Hz EU Plug)



TC2000-G1
(# 5034102400)

(158,050.-)
142,245.-



TC2000-G2
(# 5034112400)

(201,550.-)
181,395.-



TC2000-G3
(# 5034122400)

(228,050.-)
205,245.-

SPECIAL OFFER
SALE
UP TO 10% OFF

SMART SCIENCE
Smart Science co.,Ltd.

WHX WORLD HEALTH EXPO

Now - 30 Sep 2026

* ราคายังไม่รวม VAT 7%

Incubator

Mini Dry Bath

Benchmark Scientific

BSH200, MyBlock™ Mini Dry Bath

(# BSH200-E) MyBlock™ Mini Dry Bath, with block lifter (Blocks sold separately)

- Exchangeable blocks for 0.2 to 50ml tubes

Functions : **Heating**

Temperature range Heating: **RT +5 to 100°C**

16,065.- (17,850.-)

BSH300, MyBlock™ Mini Dry Bath

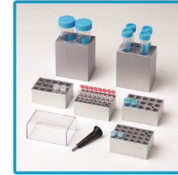
(# BSH300-E) MyBlock™ Mini dry bath, with block lifter (Blocks sold separately)

- Exchangeable blocks for 0.2 to 50ml tubes

Functions : **Heating & cooling**

Temperature range: **RT -25 to 100°C**

41,805.- (46,450.-)



**ราคาไม่รวม Block

Incubator

Benchmark Scientific

MyTemp™ Mini Digital Incubator

- Digital temperature control
- Accepts bottles and flasks up to 2 L
- Internal power outlet, for installation of small shakers, mixers or other instrumentation
- Dimensions: (w x d x h) : Interior 23.5 x 29 cm



Built-in internal outlet

(# H2200-HC-E) with heating and cooling
Temp. Range : 15°C below ambient to 60°C

46,125.- (51,250.-)

(# H2200-H-E) with heating only
Temp. Range : 5°C above ambient to 60°C

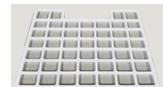
30,375.- (33,750.-)

OPTIONAL ACCESSORIES



(# H3D1020-E) Mini Nutating Rocker, 8 x 6 in. platform

25,101.- (27,890.-)



(# H2200-SH) Extra Shelf 10.5 x 8"

2,475.- (2,750.-)

Normal Incubator

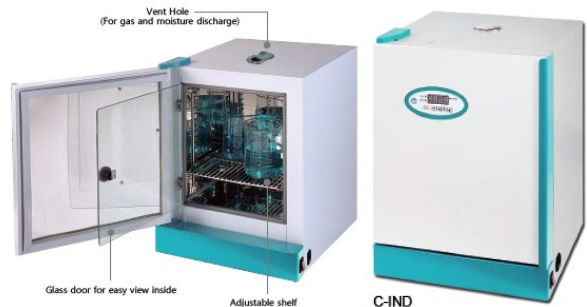
- C-IND : Digital Controller
- Double doors
- Height adjustable wire base plate
- Stainless steel SUS304
- Temp. Range Ambient+5°C to 60°C
- Digital Temp. controller & Digital display / PT1000
- Timer 99 Hours 59 min

CHANGSHIN SCIENCE

(# C-IND1) Incubator (Digital) 30L
32,895.- (36,550.-)

(# C-IND2) Incubator (Digital) 72L
38,691.- (42,990.-)

(# C-IND3) Incubator (Digital) 150L
50,211.- (55,790.-)



Rotator

Benchmark Scientific

Roto-Therm™ Incubated Rotator

Ambient+5 to 60°C
Speed : H2020 = 24rpm / H2024 = 5 to 70rpm



(# H2020-E) Roto-Therm™ Incubated Rotator with tube holders

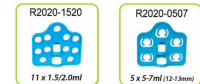
33,885.- (37,650.-)

(# H2024-E) Roto-Therm™ Plus Incubated Rotator (variable speed) with tube holders

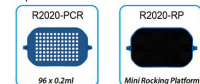
45,225.- (50,250.-)



Included Tube Holders:



Optional Tube Holders:



Roto-Mini [Plus Mixing Modes : Mix - Pause - Rock]

(# R2020-E) Roto-Mini™ Rotator with tube holders, Fixed speed of 24 rpm

20,205.- (22,450.-)

(# R2024-E) Roto-Mini™ Plus Variable Speed Rotator with tube holders, Adjust speed of 5 to 70rpm

24,255.- (26,950.-)



Includes

*Includes tube holders for 11x1.5/2.0, 5x5/7ml, 5x10/15, 6x50ml and 24x0.5ml tubes

SPECIAL OFFER
SALE
UP TO 10% OFF

SMART SCIENCE
Smart Science co.,Ltd.

WHX WORLD HEALTH EXPO

Now - 30 Sep 2026

* ราคายังไม่รวม VAT 7%

Shaking Incubator

Shaker

Servicebio®

Multi-functional Shake

- Three independent modes: **Horizontal**, **Pendulum** and **3D**. In 3D mode, the mixing intensity can be set separately.
- Rust-proof** treatment on the base plate for durability

DS-3D100 **22,491.-** (24,990-)



Shaking Incubator

Benchmark Scientific

Maximum capacity of Erlenmeyer flasks

Incu-Shaker™ Mini

- Instantly exchange flask clamps with MAGic Clamp™ accessories (PATENTED)
- Program STEP feature for linking consecutive programs
- Temperature : **Ambient +5 to 70°C**
- Speed : **30 to 300rpm**



Flask Size:	Incu-Shaker Mini
50ml	20
125ml	12
250ml	8
500ml	5
1L	2
2L	0
3L	0



(# H1001-M-E) **177,615.-** (197,350-)
Incu-Shaker™ Mini with non-slip rubber mat

Constant Temperature Shaking Incubator SCITEX

- Shaking Speed : **20-300 rpm**
- Temperature Range: **RT+5-60 °C**
- ABS shell, polished stainless steel chamber. 250mlx12 or 500mlx9 or 1000mlx4

#ICB-20BS (18L) **60,021.-** (66,690-)
50mlx12 or 100mlx9 or 250mlx6

#ICB-50BS (48L) **94,185.-** (104,650-)
50mlx20 or 100mlx9 or 250mlx12 or 500mlx9 or 1000mlx4

#ICB-80S (69L) **124,281.-** (138,090-)
100mlx20 or 250mlx16 or 500mlx9 or 1000mlx5 or 2000mlx4



Shaking Incubator

CHANGSHIN SCIENCE

- Speed range : **30-400 rpm**
- Material plate made form **stainless steel**
- Accurate temperature and speed control with Digital Temp Controller & Digital R.P.M Controller
- Excellent durability even for long time using low noise with D.C motor
- Built-in **safety devices** such as overload breakers, earth leakage breakers, and automatic stops when doors open

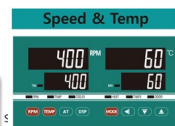
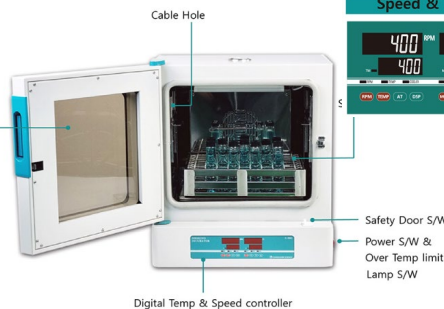


#C-SKI-1 : Temp = 10-60°C **115,425.-** (128,250-)

#C-SKI-2 : Temp = Ambient +5 - 70°C **86,571.-** (96,190-)

Shaking Incubator Chamber Type

- Speed range : **30-400 rpm**
- Spring rack installed as standard
- Material plate made form stainless steel
- Time range : **99 Hours 59 Minutes**
- Digital safety thermostat
- Auto tuning / Digital PI.D
- Temp calibration



CHANGSHIN SCIENCE

#C-SKI-3 : Temp = Ambient +5 - 70°C **86,571.-** (96,190-)

#C-SKI-4 : Temp = Ambient +5 - 70°C **106,785.-** (118,650-)

#C-SKI-5 : Temp = 5 - 60°C **138,501.-** (153,890-)

SPECIAL OFFER
SALE
UP TO 10% OFF

SMART SCIENCE
Smart Science co.,Ltd.

WHX WORLD HEALTH EXPO

Now - 30 Sep 2026

* ราคายังไม่รวม VAT 7%

Microscope

bScope



bscope



BS.1157-PLI

(74,690.-)

70,956.-



BS.1152-PLI

(48,790.-)

46,351.-

euromex
microscopes holland

- Provided with APL (Antimicrobial Protection Layer)
- Microscopes for research and laboratories
- Monocular, binocular and trinocular models



BS.1153-PLI

(49,290.-)

46,826.-



bScope with HDS camera

BS.1153-PLI

bScope premium trino + (#VC.3024-HDS) bScope

(87,900.-)

83,900.-

StereoBlue

SB.1930

euromex
microscopes holland



Trinocular Stereo zoom microscope StereoBlue, 0.7x to 4.5x zoom objective, magnification from 7x to 45x, ergonomically stand with incident and transmitted LED illumination

(28,190.-)

26,781.-

BlueScope

(#BL.1152) BlueScope Bino 4/10/40/100 mechanical stage

euromex
microscopes holland



BlueScope series are designed for education, universities and small laboratories.

- WF 10x/20 mm eyepieces
- Binocular and trinocular models
- Reversed quadruple nosepiece
- Plan and plan IOS objectives
- NeoLED™ illumination

(27,750.-)

26,363.-



mScope B120C-R Series USB-C Rechargeable Student Binocular Compound Microscope **40X-2500X** Magnification with 3D Two-Layer Mechanical Stage, Achromatic Objectives, & LED illuminator

Microscope B120C-3PL

+

camera MD500A-3PL

(25,900.-)

23,000.-

AmScope™



camera MD500A-3PL

(13,590.-)

12,911.-



(# M162C-2L-PB10-V287-3PL)

M162 Series Dual Light Monocular Compound Microscope
40x to 1000x Magnification range w/ 10x and 25x eyepieces
Monocular head, 45° incline, 360° rotatable
Forwarded triple revolving nosepiece
4x, 10x, 40x objectives
Plain stage w/ clips, 89mm x 89mm dimensions
Coaxial coarse and fine focus, mm X-Y fine focus precision
Single lens condenser w/ disc diaphragm
Variable-intensity LED illumination
External power supply, 220V/60Hz
Supplied with dust cover and power supply

(7,650.-)

7,268.-

AmScope™

SPECIAL OFFER
SALE
UP TO 10% OFF

SMART SCIENCE
Smart Science co.,Ltd.

WHX WORLD HEALTH EXPO

Now - 30 Sep 2026

* ราคายังไม่รวม VAT 7%

Educational Microscopes



(# SLX-3) SLX Trinocular Stereomicroscope 7x-45x, fixed arm, Zoom ratio 6.43:1, LED Incident & transmitted light, rechargeable batteries (not included)
(28,250-)

25,425.-



(# B-60) Binocular brightfield microscope, 1000x, rechargeable batteries (not included)
(19,250-)

17,325.-

Digital Video Bundles

OPTIKA
ITALY



(# B-61V) B-60 Monocular brightfield microscope, fixed stage, 400x, with 7" monitor bundle, rechargeable batteries (not included)
(24,590-)

22,131.-

(# B-62V) B-60 Monocular brightfield microscope, 400x, with 7" monitor bundle, rechargeable batteries (not included)
(27,790-)

25,011.-

B-150 Series

LCD screen: High definition 7" LCD.
Camera: 1920x1080 pixels, 30fps (video). Up to 1844x1080 pixels (photo)
Storing capacity: On Micro Sd card
Video recording: Yes
Measuring function: Yes, simple line measurement



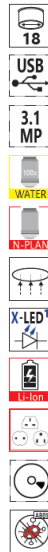
(# B-151V) B-150 Monocular brightfield microscope, fixed stage, 400x, with 7" monitor bundle
28,035.-
(31,150-)

(# B-151R-PLV) B-150 Monocular brightfield microscope, fixed stage, 400x, PLAN, rechargeable batteries, with 7" monitor bundle
30,501.-
(33,890-)

(# B-152R-PLV) B-150 Monocular brightfield microscope, 400x, PLAN, rechargeable batteries, with 7" monitor bundle
33,795.-
(37,550-)

(# B-153V) B-150 Monocular brightfield microscope, 600x, with 7" monitor bundle
32,301.-
(35,890-)

(# B-159R-PLV) B-150 Binocular brightfield microscope, 1000x, PLAN, rechargeable batteries, with 7" monitor bundle
41,211.-
(45,790-)



(# B-150D-BRPL) B-150 Digital binocular brightfield microscope, 1000x, PLAN, rechargeable batteries
(47,390-)

42,651.-

B-190 Series



PATENTED

(# B-190TBPL) B-190 Digital binocular microscope with digital imaging unit, 1000x, PLAN, EU
(75,150-)

67,635.-

Digital binocular microscope ideal for teachers and secondary schools, with four N-PLAN objectives (1000x), FN 18 high eyepoint, finite optical system, coaxial focusing, mechanical stage, Abbe condenser and powerful, uniform, white color temperature 3 W X-LED² illumination. The 3.1 MP CMOS camera ensures excellent colour reproduction and is connected to Digital Imaging Unit with vivid color graphic display for unparalleled comfort and performance. The Digital Imaging Unit represents a 2-in-1 solution as it can be disconnected and used as a real PC, being Windows-based, with powerful Intel processor and large touch screen of 10.1" for fast, responsive and smooth control

Head: Binocular with integrated 3.1 MP camera, 30° inclined; 360° rotating. Digital Imaging Unit detachable included, rotating and tilting.

Dioptric adjustment: Left eyepiece.

Eyepieces: WF10x/18 mm, high eyepoint, secured by screw.

Nosepiece: Quadruple ball bearings: revolving nosepiece, reversed.

Objectives:

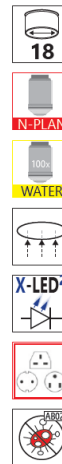
- N-PLAN objective 4x/0.10
- N-PLAN objective 10x/0.25
- N-PLAN objective 40x/0.65
- N-PLAN objective 100x/1.25 (Oil/Water). All with anti-fungus treatment.

Specimen stage: Mechanical stage, 125x115 mm, 70x30 mm X-Y movement range. Vernier scale on the two axes, accuracy: 0.1 mm.

Focusing: Coaxial coarse and fine focusing mechanism with limit stop to prevent the contact between objective and specimen. Adjustable tension of coarse focusing knob.

Condenser: Abbe N.A. 1.25, pre-centered, focusable, with iris diaphragm.

Illumination: X-LED² with white 3 W LED and brightness control. Color temperature: 6.300 K. Multi-plug 100-240Vac/6Vdc external power supply



(# B-192PL) B-190 Binocular brightfield microscope, 1000x, PLAN
(29,850-)

26,865.-

SPECIAL OFFER
SALE
UP TO 10% OFF

SMART SCIENCE
Smart Science co.,Ltd.

WHX WORLD HEALTH EXPO

Now - 30 Sep 2026

* ราคายังไม่รวม VAT 7%

Laboratory Microscopes

OPTIKA
I T A L Y



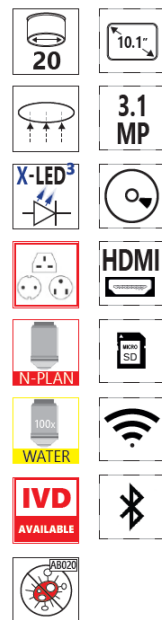
B-293PLi

Observation mode:	Brightfield.
Head:	Trinocular (fixed, 50/50), 360° rotating and 30° inclined. Interpupillary distance 55-75 mm.
Dioptric adjustment	On both eyepieces.
Eyepieces:	WF10x/20 mm, high eye-point and secured by screw.
Nosepiece:	Quadruple revolving nosepiece, rotation on ball bearings. IOS N-PLAN 4x/0.10 IOS N-PLAN 10x/0.25 IOS N-PLAN 40x/0.65 IOS N-PLAN 100x/1.25 (Oil/Water) All with anti-fungus treatment.
Objectives:	Double layer rack less mechanical sliding stage, 150x139 mm, 75x33 mm X-Y movement range. Vernier scale on the two axes, accuracy: 0.1 mm.
Specimen stage:	Coaxial coarse and fine focusing mechanism with limit stop to prevent the contact between objective and specimen. Adjustable tension of coarse focusing knob.
Focusing:	Abbe N.A. 1.25, with objective-coded iris diaphragm, focusable and center able.
Condenser:	X-LED3 type with white 3.6 W LED (6,300 K) and light intensity control. Multi-plug 100-240Vac/6Vdc external power supply.
Illumination (Fixed Koehler type):	

(# B-293PLi) B-290 Trinocular brightfield microscope, 1000x, IOS PLAN

(48,190.-)

43,371.-



B-290TB

PATENTED



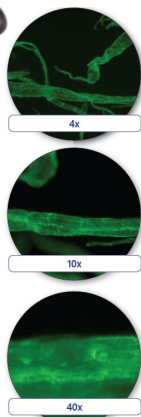
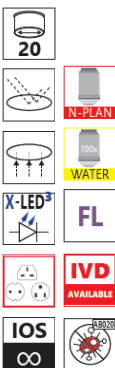
Built-in camera and Digital Imaging Unit with N-PLAN objectives, rackless stage and exclusive **X-LED³** for unmatched performance in illumination. Ideal for discussion group with 360° rotating Digital Imaging Unit.

Observation mode:	Brightfield.
Head:	Binocular, 360° rotating and 30° inclined. Interpupillary distance from 48 to 75 mm; dioptric adjustment on left eyepiece. Built-in 3.1 MP camera.
Dioptric adjustment:	On the left eyepiece tube.
Eyepieces:	WF10x/20 mm, high eye-point and secured by screw.
Nosepiece:	Quadruple revolving nosepiece, rotation on ball bearings.
Objectives:	N-PLAN 4x/0.10 N-PLAN 10x/0.25 N-PLAN 40x/0.65 N-PLAN 100x/1.25 (Oil/Water) All with anti-fungus treatment.
Specimen stage:	Double layer rackless mechanical sliding stage, 150x139 mm, 75x33 mm X-Y movement range. Vernier scale on the two axes, accuracy: 0.1 mm.
Focusing:	Coaxial coarse and fine focusing mechanism with limit stop to prevent the contact between objective and specimen. Adjustable tension of coarse focusing knob.
Condenser:	Abbe N.A. 1.25, with objective-coded iris diaphragm, focusable and centerable.
Illumination (Fixed Koehler type):	X-LED ³ type with white 3.6 W LED (6,300 K) and light intensity control. Multi-plug 100-240Vac/6Vdc external power supply.

(# B-290TB) B-290 Digital binocular microscope with digital imaging unit, 1000x, PLAN, EU

(89,950.-)

80,955.-



B-383LD

Part	Description
Observation mode:	Brightfield, LED fluorescence.
Epi-illumination and filter:	High-power blue LED with brightness control. 3-position filter holder; blue included.
Head:	Trinocular (fixed 50/50), 30° inclined, 360° rotating.
Interpupillary distance:	Adjustable between 48 and 75 mm.
Dioptric adjustment:	On the left eyepiece tube.
Eyepieces:	WF10x/20 mm, high eye-point and secured by screw.
Nosepiece:	Quintuple revolving nosepiece, rotation on ball bearings.
Objectives:	4x/0.10, W.D. 16.8 mm 10x/0.25, W.D. 5.8 mm 20x/0.40, W.D. 5.1 mm 100x/1.25 (Oil/Water), W.D. 0.13 mm All with anti-fungus treatment.

Standard filterset			
Name	Excitation filter (nm)	Dichroic mirror cut-off (nm)	Emission filter (nm)
B Blue	460 - 490	505	515LP

Part	Description
Specimen stage:	Double layer rackless mechanical stage, 233x147 mm, 78x54 mm X-Y range.
Focusing:	Coaxial coarse (adjustable tension) and fine focusing mechanism with limit stop to prevent the contact between objective and specimen.
Condenser:	Abbe N.A. 1.25, with objective-coded iris diaphragm, focusable and centerable.
Transmitted illumination (Fixed Koehler type):	X-LED ³ type with white 3.6 W LED (6,300K) with brightness control. Multi-plug 100-240Vac/6Vdc external power supply.

(# B-383LD) B-380 Trinocular LED fluorescence microscope, 1000x, IOS PLAN, B filter set

(118,150.-)

106,335.-

SPECIAL OFFER
SALE
UP TO 10% OFF

SMART SCIENCE
Smart Science co.,Ltd.

WHX WORLD HEALTH EXPO

Now - 30 Sep 2026

* ราคายังไม่รวม VAT 7%

Liquid Handling

Electronic Pipette Filler



AQUA Multi Channel Electronic Micropipette



Single Channel
(# AQS-10) 0.2-10 µl
(# AQS-20) 0.5-20 µl
(# AQS-100) 2-100 µl
(# AQS-200) 5-200 µl
(# AQS-300) 10-300 µl
(# AQS-500) 10-500 µl
(# AQS-1000) 50-1000 µl
(# AQS-5000) 0.1-5 ml
(# AQS-10000) 1-10 ml

(19,950.-)
17,955.-

8 Channel
(# AQE-10) 0.2-10 µl
(# AQE-100) 5-100 µl
(# AQE-300) 10-300 µl

(104,050.-)
93,645.-

12 Channel
(# AQT-10) 0.2-10 µl
(# AQT-100) 5-100 µl
(# AQT-300) 10-300 µl

(108,590.-)
97,731.-

MICROLIT



EASYAID
Electronic Pipette Filler

(6,350.-)
5,715.-



DUAB

Levo Plus Pipette Filler

Battery Version (Basic)
110V/220V/50Hz/60Hz EU Plug

(# 7061100102) Levo Plus LCD displays battery status and pipetting speed (Replaceable Battery Model)

(4,050.-)
3,645.-



Levo Pipette Controller

(850.-)

765.-

Cat No.	Color
7033204000	Yellow
7033206000	North Carolina Blue

Cat No.	Color
7033201000	Dark Blue
7033202000	Red
7033203000	Green

DUAB

(# 7035200001) **EcoVac**
Economical Vacuum Aspirator (2L)

(18,450.-)
16,605.-



(# 7035100000) **SafeVac**
Vacuum Aspiration System (4L)

(37,050.-)
33,345.-



Manual Pipette Stand, Holds up to 6 pipettes

(# 7030000085) (850.-)
765.-

Circular Pipette Stand, Suitable for Fully Autoclavable Pipettes

(# 7030000084) (1,450.-)
1,305.-



DispensMate-Pro

Premium Bottle-Top Dispenser



- High chemical compatibility with use of inert materials and glass/PTFE piston
- Easy to disassemble and clean for periodic maintenance
- Fully autoclavable at 121°C to ensure sterility
- Available in 5 dispensing volume ranges from 0.5mL to 100mL
- Supplied with most popular adapters(S40, GL32, GL38, GL25, GL28)

Cat. No.	Volume Range	Graduation	Systematic Error		Random Error	
	mL	mL	µL	%	µL	%
7032212001	0.5-5	0.1	±25	±0.5	±10	±0.2
7032212002	1.0-10	0.2	±50	±0.5	±20	±0.2
7032212003	2.5-25	0.5	±125	±0.5	±50	±0.2
7032111004	5.0-50	1.0	±250	±0.5	±100	±0.2
7032111005	10-100	2.0	±500	±0.5	±200	±0.2

DUAB

Size	Cat No.
0.5-5 ml	7032212001
1-10 ml	7032212002
2.5-25 ml	7032212003
ราคา	(9,250.-) 8,325.-
5-50 ml	7032111004
10-100 ml	7032111005
ราคา	(12,250.-) 11,025.-

SPECIAL OFFER
SALE
UP TO 10% OFF

SMART SCIENCE
Smart Science co.,Ltd.

WHX WORLD HEALTH EXPO

Now - 30 Sep 2026

* ราคายังไม่รวม VAT 7%

Liquid Handling

Bottle Top Dispenser



SCITUS Bottle Top Dispenser
a simple, cost-effective
(# SCI-2.5) 0.25-2.5 mL
(# SCI-5) 0.5-5 mL
(# SCI-10) 1-10 mL

6,111.-
(6,790.-)

(# SCI-30) 2.5-30 mL
(# SCI-60) 5-60 mL

7,191.-
(7,990.-)

(# SCI-100) 10-100 mL

8,145.-
(9,050.-)

BEATUS Bottle Top Dispenser with
Recirculation Valve and Springless
Valve® Technology.



(# BEAT-2.5) 0.25-2.5 mL
(# BEAT-5) 0.5-5 mL
(# BEAT-10) 1-10 mL

7,335.-
(8,150.-)

(# BEAT-30) 2.5-30 mL
(# BEAT-60) 5-60 mL

8,595.-
(9,550.-)

(# BEAT-100) 10-100 mL

9,801.-
(10,890.-)

MICROLIT



LENTUS® Bottle Top Dispenser
for dispensing Hydrofluoric Acid,
high-purity media and acids & bases.

(# LNT-HF-2.5) 0.25-2.5 mL
(# LNT-HF-5) 0.5-5 mL
(# LNT-HF-10) 1-10 mL

24,435.-
(27,150.-)

(# LNT-HF-30) 2.5-30 mL
(# LNT-HF-60) 5-60 mL

28,521.-
(31,690.-)



ULTIMUS Bottle Top Dispenser
with Dual Inlet® Technology

(# ULT-2.5) 0.25-2.5 mL
(# ULT-5) 0.5-5 mL
(# ULT-10) 1-10 mL

8,991.-
(9,990.-)

(# ULT-30) 2.5-30 mL
(# ULT-60) 5-60 mL

10,611.-
(11,790.-)



E-BURETTE

(With Motorised Piston and
One-Touch One-Drop Dispensing)

(# TI-10) 10 mL
(# TI-25) 25 mL
(# TI-50) 50 mL

44,811.-
(49,790.-)



E-DISPENSER

(# ED-50) Electronic Dispenser
with automatic Single,
Stepper and Sequential
Dispensing + Electronic Burette,
50 mL

53,775.-
(59,750.-)

Peristaltic Pump



Speed Variable Peristaltic Pump
(304 Stainless Steel Housing)

(# MP100B) 0.1-150 RPM **46,665.-** (51,850.-)

(# MP300B) 0.1-310 RPM **81,135.-** (90,150.-)

(# MP600B) 0.1-600 RPM **143,505.-** (159,450.-)



Clever Flow Peristaltic Pump
(304 Stainless Steel Housing)

(# MP100C) 0.1-150 RPM **65,115.-** (72,350.-)

(# MP300C) 0.1-310 RPM **94,365.-** (104,850.-)

(# MP600C) 0.1-600 RPM **121,941.-** (135,490.-)



Intelligent Dispensing Peristaltic Pump
(304 Stainless Steel Housing)

(# MP100I) 0.1-150 RPM **109,971.-** (122,190.-)

(# MP300I) 0.1-310 RPM **115,281.-** (128,090.-)

(# MP600I) 0.1-600 RPM **166,365.-** (184,850.-)

Accessories

Hand Dispenser MP – HD



(10,150.-)

9,135.-

Footswitch MP – FS



(4,050.-)

3,645.-

MICROLIT

SPECIAL OFFER
SALE
UP TO 10% OFF

SMART SCIENCE
Smart Science co.,Ltd.

WHX WORLD HEALTH EXPO

Now - 30 Sep 2026

* ราคายังไม่รวม VAT 7%

Centrifuge

DVAB

(# 9032002132)

D2012S High Speed Mini Centrifuge
(CE marked), with A12-2P plastic rotor kit

- Pulse operation for fast and convenient quick spins
- Speed up to 15000rpm (15100xg)
- Brushless DC motor drive quickly to the target speed
- Smooth and quiet operation (noises65dB)
- Automatic door lock and over-speed detection
- Wide voltage technology
- speed is not affected by voltage fluctuations, high speed accuracy



~~(29,050.-)~~
26,145.-



(# 901311121)

D1524R High Speed Refrigerated Micro-Centrifuge, with automatic chamber lock, customizable programs, adjustable acceleration/deceleration and other upgrades



~~(166,550.-)~~
149,895.-



(# 9063001126)

DM1224 Economic Hematocrit Centrifuge, with AC24 rotor kit

~~(30,650.-)~~
27,585.-



(# 9034001122)

DM0636 Multi-Purpose Clinical Centrifuge



~~(66,550.-)~~
59,895.-

(# 9033001121)

D3024 High Speed Micro-Centrifuge



~~(64,050.-)~~
57,645.-

(# 9021001331)

D1012UA Including the rotor of FA12-2P and both adapter SA02P&SA05P2 (package contain in the box)



~~(8,350.-)~~
7,515.-



Drybath / Water bath

(# 5032101200)

HB120-S Dry bath 120°C
LED digital dry bath



~~(13,650.-)~~
12,285.-

(# 5032111210)

HB150-S2 Dry bath 105°C/150°C
with 2pcs heating block



~~(24,550.-)~~
22,095.-



(# 5033101210)

DWB20-S Water bath
220V 50-60HZ EU Plug

~~(21,690.-)~~
19,521.-

Heating block

~~(4,850.-)~~
4,365.-



(# 18900220)
for 2mL tubes, 40 holes



(# 18900221) for 5mL
blood collection tube, 45 holes



(# 18900253)
for 1.5mL tubes, 40 holes



(# 18900461)
for 1.5mL tubes, 20 holes



(# 18900462)
for 2mL tubes, 20 holes



(# 18900464)
for 15mL tubes, 12 holes-H



(# 18900465)
for 50mL tubes, 4 holes-H



(# 18900546)
for 5/15mL tubes, 28 holes

SPECIAL OFFER
SALE
UP TO 10% OFF

SMART SCIENCE
Smart Science co.,Ltd.

WHX WORLD HEALTH EXPO

Now - 30 Sep 2026

* ราคายังไม่รวม VAT 7%

Autoclave

Class-N autoclave

Autoclave, Vertical Type, ST-VE Series



Standard SS Basket



Pressure gauge

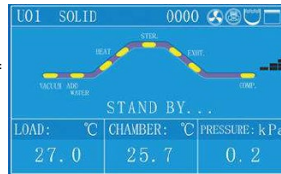
SCITEK

- LED display
- Sterilization temperature: 105-136°C
- Working pressure: 0.23 Mpa
- Overheat protection, Anti-burning protection, automatic air discharge
- Drying function with manual water injection

Model	Price (THB)	Promotion (THB)
ST-V50E (50L)	101,090	90,981
ST-V80E (80L)	115,950	104,355
ST-V100E (100L)	130,750	117,675

Class N autoclaves are suitable for most standard applications.

- LCD screen and USB port
- Fast cooling fan to shorten process
- With automatic error monitor and cut off
- Sterilization temperature : 105-135°C
- Melting temperature : 60-115°C
- Sterilization / Melting time : 1-6000 min
- Pressure valve set pressure : 0.29 Mpa



ZEALWAY



Model	Price (THB)	Promotion (THB)
GI54SW (54L)	165,590	149,031
GI80SW (80L)	208,150	187,335
GI100SW (100L)	226,250	203,625



Autoclave, Large benchtop Type



- Automatic operation of sterilization
- LCD touchscreen display
- Chamber volume: 45L
- Built-in steam generator
- Built-in water tank
- Sterilization temperature: 105-136°C
- Working pressure: 0.23 Mpa
- Drying time: 15 min
- Buzzer alert at the end of sterilization

SCITEK

Model	Price (THB)	Promotion (THB)
ST-B45N (45L)	152,950	137,655

Table Top Steam Sterilizer



- Quality stainless steel liner, sealed cover
- Microcomputer control, automatic cycle, Touch buttons
- 121°C and 134°C can be set
- Quipped with standard test interface
- Europe CLASS N. standard
- Over temperature , over pressure , low water level protection, anti dry burning
- Sterilization end buzzer reminder, automatic stop
- Automatic discharge cool air, sterilization end automatic exhaust steam
- Built-in steam generator to provide saturated steam quickly

ZENIHLAB



Model	Price (THB)	Promotion (THB)
TB18C-18L	29,000	27,000
TB23C-23L	32,000	30,000

SPECIAL OFFER
SALE
UP TO 10% OFF

SMART SCIENCE
Smart Science co.,Ltd.

WHX WORLD HEALTH EXPO

Now - 30 Sep 2026

* ราคายังไม่รวม VAT 7%

Autoclave

Class-B autoclave

Class B autoclaves utilize a **vacuum pump to completely remove air from the chamber**, which enables steam to better penetrate the load. Class B autoclaves are preferable **for more difficult loads** that contain porous or hollow materials.

Classic Autoclave, Classic B series



- Sterilization temperature: 121°C / 134°C
- Working pressure: 0.21-0.23 Mpa
- LED screen display
- Material of chamber : Stainless steel 304
- Dry time adjustable : 1-60 min
- Built-in printer

LAFOMED

Model	Price (THB)	Promotion (THB)
LFSS18BA (18L)	65,150	58,635
LFSS23BA (23L)	72,390	65,151

X45 series (Fast Dry)



- Sterilization temperature: 121°C / 134°C
- Chamber volume : 45 L
- Material of chamber : Stainless steel 304
- Waste water tank : 7 L
- Clean water tank : 10 L
- Touch screen display
- Min sterilization time : less than 35 min
- Drying system : Ai, Presetting, Custom
- Output : Thermo printer, Label printer, SD card



LAFOMED

Model	Price (THB)	Promotion (THB)
X45 (45L)	249,000	224,100

Automatic table type steam sterilizer



- Quality stainless steel liner, sealed cover
- Microcomputer control, automatic cycle, arbitrary sterilization procedures, Touch buttons
- Safety interlocking device, Open top water tank
- Quipped with standard test interface
- Europe CLASS N. standard
- Over temperature , over voltage , low water level protection, anti dry burning
- Sterilization end buzzer reminder, automatic stop
- Automatic cooling air, sterilization end automatic exhaust steam
- Built-in steam generator to provide saturated steam quickly

Model	Price (THB)	Promotion (THB)
B8C-8L	55,000	52,000
B12C-12L	57,000	54,000
B18C-18L	61,000	57,000
B23C-23L	63,000	59,000

Autoclave, Benchtop Type, ST-BB Series

SCITEK



ST-B8B, ST-B12B



ST-B18B, ST-B24B

- Optional external or internal printer
- Sterilization temperature: 134°C
- Working pressure: 0.22 Mpa
- Three times pre-vacuum enhances sterilization efficiency
- Built-in steam generator

Model	Price (THB)	Promotion (THB)
ST-B8B (8L)	63,090	56,781
ST-B12B (12L)	66,050	59,445
ST-B18B (18L)	61,000	70,590

Autoclave, Large Benchtop Type

SCITEK



- LCD touch screen display
- Self-calibration function
- Built-in water tank
- Automatic water injection and drainage
- Sterilization temperature: 134°C/121°C
- Designed pressure: -0.1~0.5 Mpa
- Chamber size: 6391x521
- Water tank: 14L
- Chamber material: SUS304



Model	Price (THB)	Promotion (THB)
ST-B60PV (60L)	282,750	254,475
ST-B80PV (80L)	307,190	276,471

SPECIAL OFFER
SALE
UP TO 10% OFF

SMART SCIENCE
Smart Science co.,Ltd.

WHX WORLD HEALTH EXPO

Now - 30 Sep 2026

* ราคายังไม่รวม VAT 7%

Vortex Mixer / Roller / Rotator / Shaker

DLAB



(# 8063312000)
MX-T6-S+ Standard Roller Mixer
(Brushless DC Motor)
110V/220V/50Hz/60Hz EU Plug

(10,350.-)

9,315.-



(# 8063312000)
MX-T6-Pro LCD Digital Roller Mixer
(Brushless DC Motor)
110V/220V/50Hz/60Hz EU Plug

(16,050.-)

14,445.-



(# 8031412000)
MX-RD-E Rotary mixer
110V/220V/50Hz/60Hz EU Plug

(9,250.-)

8,325.-



(# 8031412100)
MX-RD-Pro LCD Digital Rotator
(Compatible, disc accessories, excluding clamps), Adjustable speed
110V/220V/50Hz/60Hz EU Plug

(27,050.-)

24,345.-



(# 8031402100)
MX-RL-Pro LCD Digital Rotator
(including a 50ml rotisserie accessory-18900147), Adjustable speed
110V/220V/50Hz/60Hz EU Plug

(31,550.-)

28,395.-



(# 18900160)
for MX-RD-Pro 1.5mLx60 centrifuge tubes holder

(4,850.-)

4,365.-



(# 18900161)
for MX-RD-Pro 1.5mLx16 centrifuge tubes holder

(4,850.-)

4,365.-



(# 18900142)
for MX-RL-Pro, 1.5mL x 48 centrifuge tubes held horizontally

(4,850.-)

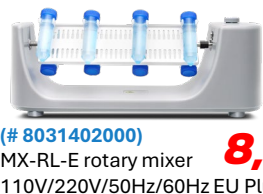
4,365.-



(# 118900143)
for MX-RD-Pro 1.5mLx16 centrifuge tubes holder

(4,350.-)

3,915.-



(# 8031402000)
MX-RL-E rotary mixer
110V/220V/50Hz/60Hz EU Plug

(9,250.-)

8,325.-



(# 8031222100)
MX-S+ DLAB Digital Vortex Mixer
110V/220V/50Hz/60Hz EU Plug

(9,650.-)

8,685.-



(# 8031102000)
MX-S DLAB Adjustable Mixer, with VT1.1 Standard Head
EU Plug 220V/50Hz

(5,750.-)

5,175.-



(# 8072311200)
SK-R1807-S Intelligent Transference Decolorizing Shaker, see-saw wave, angle 7°

(6,150.-)

5,535.-



(# 8072210201)
SK-O180-S (Basic) Intelligent Decolorizing Shaker, with fixed plate

(6,150.-)

5,535.-



(# 8032220101)
SK-O330-M Orbital Decolorizing Shaker, with fixed plate

(14,050.-)

12,645.-



(# 8032220100)
SK-O330-Pro Large Multifunctional Orbital Decolorizing Shaker, with SK 330.1 Universal attachment (package separately)

(32,050.-)

28,845.-



(# 18900027)
for MX-RD-Pro 1.5mLx60 centrifuge tubes holder

(4,850.-)

4,365.-



(# 18900505)
VT1.3 VT1.3.7 Universal top plate and vacuum suction foot package

(650.-)

585.-



(# 18900021)
VT1.3.2 Tube adapter, for 15 holes test tubes, Ø10mm (1.5-2mL), used with VT1.3/VT1.2/PS1.1

(750.-)

675.-



(# 18900024)
VT1.3.5 Tube adapter, for 8 holes test tubes, Ø20mm (10-15mL), used with VT1.3/VT1.2/PS1.1

(750.-)

675.-



(# 18900043)
VT1.3.6 Platform pad, for <Ø99mm tubes and small vessels

(250.-)

225.-



(# L-MPI-A)
Incubator for Microplates (two plates)

(24,450.-)

22,005.-



(# L-MPI-B)
Incubator for Microplates (Four plates)

(36,250.-)

32,625.-



(# L-MPI-S-C)
Thermo Shaker for Microplate (Six plates)

(89,150.-)

80,235.-

(# L-MPI-S-A)
Thermo Shaker for Microplate (two plates)

(36,250.-)

32,625.-

(# L-MPI-S-B)
Thermo Shaker for Microplate (Four plates)

(54,290.-)

48,861.-

LABGIC
三杰柯

SPECIAL OFFER
SALE
UP TO 10% OFF

SMART SCIENCE
Smart Science co.,Ltd.

WHX WORLD HEALTH EXPO

Now - 30 Sep 2026

* ราคายังไม่รวม VAT 7%

DUAB

Rotary Evaporator



(# 6030110111)

RE100-Pro Rotary Evaporator including main unit, heating bath and vertical glassware set 18900165 (condenser (1700 cm²), evaporation (1000ml) and receiving flask (1000ml)

(105,050.-)

94,545.-



(# 18900390)

C410 Chemical resistant Vacuum Pump, EU plug, 220V, 50Hz

(65,250.-)

58,725.-



(# 6032200220)

CCP5-Mini Mini low temperature circulator, Cn Plus

(74,450.-)

67,005.-



(# 5062105415)

CT4-Pro 4°CThermostatic Ice Box

(24,050.-)

21,645.-



(# 6031100300)

VC100 Vacuum controller

(57,050.-)

51,345.-

Spectrophotometer



(# 4010320202)

SP-UV2102 Touch Screen Single Beam B/W 2nm Spectrophotometer

(140,050.-)

126,045.-



(# 4010430202)

SP-UV3101 Touch Screen Double Beam B/W 1nm Spectrophotometer

(238,050.-)

214,245.-

Gel Electrophoresis

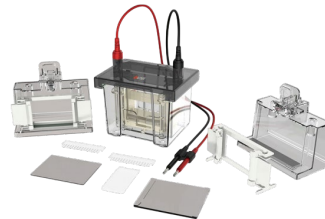


(# 4075200004)

DEP-600 Electrophoresis Power Supplies, LCD Touchscreen, 600V,600mA,360W

(26,250.-)

23,625.-

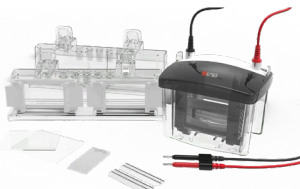


(# 18901223)

DL-Mini01 Vertical electrophoresis tank, run two 8.3x7.3cm gels at the same time

(16,050.-)

14,445.-

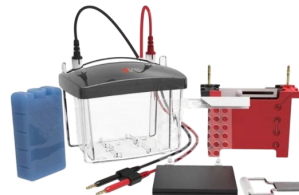


(# 18901227)

DL-Mini04 Vertical electrophoresis tank, run four 8.3x7.3cm gels at the same time

(27,250.-)

24,525.-

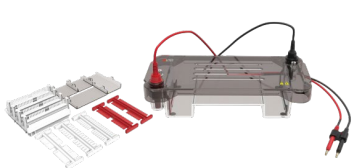


(# 18901235)

DL-ZY03 Transfer electrophoresis tank, transfer two 8.3x7.3cm gels at the same time

(16,250.-)

14,625.-

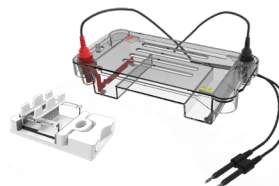


(# 18901255)

DL-SUB02 Horizontal electrophoresis tank, gel size:12*12cm, 12*6cm, 6*12cm, 6*6cm

(9,250.-)

8,325.-



(# 18901251)

DL-SUB01 Horizontal electrophoresis tank, gel size:7*6.5cm

(6,150.-)

5,535.-

SPECIAL OFFER
SALE
UP TO 10% OFF

SMART SCIENCE
Smart Science co.,Ltd.

WHX WORLD HEALTH EXPO

Now - 30 Sep 2026

* ราคายังไม่รวม VAT 7%

Liquid Nitrogen Tank

LABGIC
三杰柯

Liquid nitrogen biological container with canister



Liquid nitrogen biological container with square canister

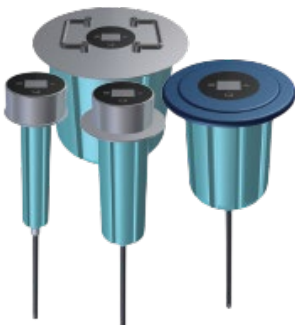


Liquid nitrogen biological container with canister

Model	Capacity (L)	Neck opening (mm)	Standard configuration	Price (THB)	Promotion (THB)
YDS-2-30S	2	30	3*Φ19*120mm canisters, Lockable lid	8,650	7,785
YDS-2-35S	2	35	3*Φ25*120mm canisters, Lockable lid	8,650	7,785
YDS-3S	3	50	6*Φ38*120mm canisters, Lockable lid	9,550	8,595
YDS-6S	6	50	6*Φ38*120mm canisters, Lockable lid	10,890	9,801
YDS-10S	10	50	6*Φ38*120mm canisters, Lockable lid	12,690	11,421
YDS-10-80S	15	80	6*Φ38*120mm canisters, Lockable lid	15,850	14,265
YDS-15S	20	50	6*Φ38*120mm canisters, Lockable lid	19,490	17,541
YDS-20S	30	50	6*Φ38*120mm canisters, Lockable lid	21,290	19,161
YDS-30S	30	50	6*Φ38*120mm canisters, Lockable lid	23,090	20,781
YDS-30-80-LS	30	80	6*Φ38*120mm canisters, Lockable lid	25,350	22,815
YDS-35S	35	50	6*Φ38*120mm canisters, Lockable lid	24,450	22,005
YDS-35-80S	35	80	6*Φ63*120mm canisters, Lockable lid	27,150	24,435
YDS-47-127-6TS	47	127	6*Φ97*120mm canisters, Lockable lid	39,390	35,451
YDS-47-127-10TS	47	127	10*Φ72*120mm canisters, Lockable lid	40,750	36,675
YDS-50BS	50	50	6*Φ38*120mm canisters, Lockable lid	37,150	33,435
YDS-50B-80	50	80	6*Φ63*120mm canisters, Lockable lid	38,050	34,245

Liquid nitrogen biological container with square canister

Model	Capacity (L)	Neck opening (mm)	Standard configuration	Price (THB)	Promotion (THB)
YDS-10-125-FS	10	125	1*Square canister (4 floors) with 25 well racks, Lockable lid	18,150	16,335
YDS-30-125-FS	30	125	6*Square canister (4 floors) with 25 well racks, Lockable lid	31,690	28,521
YDS-35-125-FS	35	125	6*Square canister (5 floors) with 25 well racks, Lockable lid	33,490	30,141
YDS-47-127-FS	47	127	6*Square canister (5 floors) with 25 well racks, Lockable lid	46,150	41,535
YDS-50B-125-FS	50	125	6*Square canister (6 floors) with 25 well racks, Lockable lid	49,790	44,811
YDS-65-216-FS	65	216	6*Square canister (4 floors) with 81 well racks, Lockable lid	93,650	84,285
YDS-95-216-FS	95	216	6*Square canister (5 floors) with 81 well racks, Lockable lid	108,590	97,731
YDS-115-216-FS	115	216	6*Square canister (6 floors) with 81 well racks, Lockable lid	128,490	115,641
YDS-120-216-FS	120	216	4*Square canister (10 floors) with 81 well racks, Lockable lid	139,350	125,415
YDS-145-216-FS	145	216	6*Square canister (8 floors) with 81 well racks, Lockable lid	152,050	136,845
YDS-175-216-FS	175	216	6*Square canister (10 floors) with 81 well racks, Lockable lid	166,490	149,841



Model	L-SRIM-50	L-SRIM-80	L-SRIM-125	L-SRIM-216
Liquid Level Measurement Range	0-643mm(±5mm)			
Temperature Measurement Range	-200~+200°C(±1°C)			
Compatible Neck opening	50mm	80mm	125mm	216mm
Operating Temperature	-20~40°C			
Operating Humidity	<75%(25°C)			
Input Voltage	3.6V			
Power Supply	Li-battery Powered(Replaceable)			
Mounting Method	Plug Replacement			
Price	23,550.-	23,550.-	23,550.-	24,450.-

SPECIAL OFFER
SALE
UP TO 10% OFF

SMART SCIENCE
Smart Science co.,Ltd.

WHX WORLD HEALTH EXPO

Now - 30 Sep 2026

* ราคายังไม่รวม VAT 7%

❄️ Lab Freezer, Refrigerator ❄️

Midea Biomedical

Pharmacy refrigerator, 2~8°C



MC-5L126
(126L)

(42,900.-)

38,610.-



MC-5L416
(416L)

(82,900.-)

74,610.-



MC-5L606
(606L)

(116,900.-)

105,210.-



MC-5L1006
(1006L)

(160,900.-)

144,810.-

Freezer, -40~86°C



MD-86L108
(108L)

(216,900.-)

195,210.-

Biomedical deep freezer, -20~-40°C

MD-40L106
(106L)



(64,900.-)

58,410.-



MD-40L308
(308L)

(94,900.-)

85,410.-

Combined refrigerator and freezer



Temperature range Fridge: 2°C ~ 8°C
Freezer: -10°C ~ -25°C
Total: 350L, Fridge: 206L, Freezer: 144L

MCD-25L506

(134,900.-)

121,410.-

Temperature range Fridge: 2°C ~ 8°C
Freezer: -20°C ~ -40°C
Total: 506L, Fridge: 247L, Freezer: 259L

MCD-40L506

(148,900.-)

134,010.-

Blood Bank Refrigerator, 4±1°C



MXY-206
(206L)

(161,900.-)

145,710.-



MXY-558
(558L)

(274,900.-)

247,410.-



MXY-1306
(1306L)

(365,900.-)

329,310.-

DualX Ultra Low freezer, -40~86°C



MD-86L580BS
(580L)

(378,900.-)

341,010.-



MD-86L860BS
(860L)

(659,900.-)

593,910.-