

RECREATING MOVEMENT, REINVENTING SPACE

Create a new landmark for your business venue by showcasing a new form of dynamic media art

* Kinetic art derives from the Greek word "kinesis", meaning "movement". Kinetic art is a type of artwork that contains moving elements.



An Art in Itself

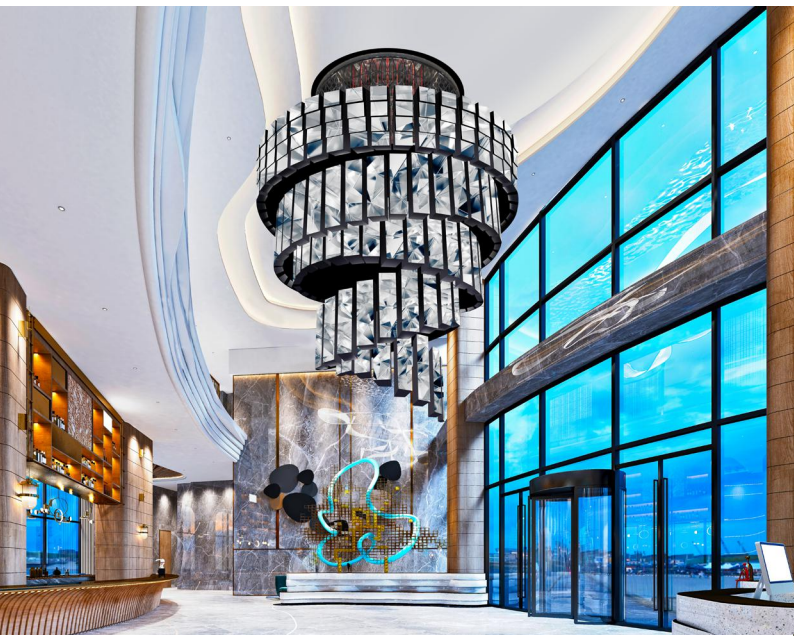


New Form of
Advertisement



Differentiated
Content Experience

KEY VALUES OF KINETIC LED MEDIA ART



An Art Installation by Itself

Kinetic LED, blending movement, content, and sound, stands as a true work of art. It captures the attention of audiences in any setting—whether in lobbies, museums, airports, or expansive shopping centers—with its immersive presence that seamlessly combines technology with art.

New Form of Advertisement

Kinetic LED Media Art transcends the capabilities of conventional digital displays, bringing to life visual expressions that were once thought impossible. Through such eye-catching delivery, space owners can expect to maximize their ad revenue by offering a premium three-dimensional advertising space.



Differentiated Content Experience

Kinetic LED enhances the viewing experience by applying dynamic movements to content, providing a three-dimensional and lifelike engagement.

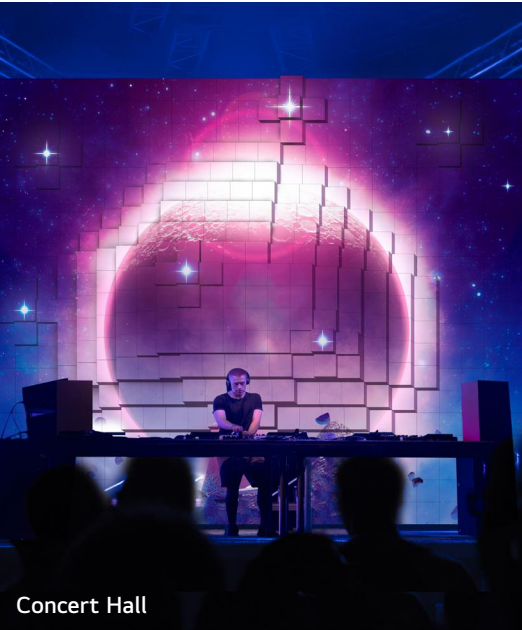
USAGE SCENES



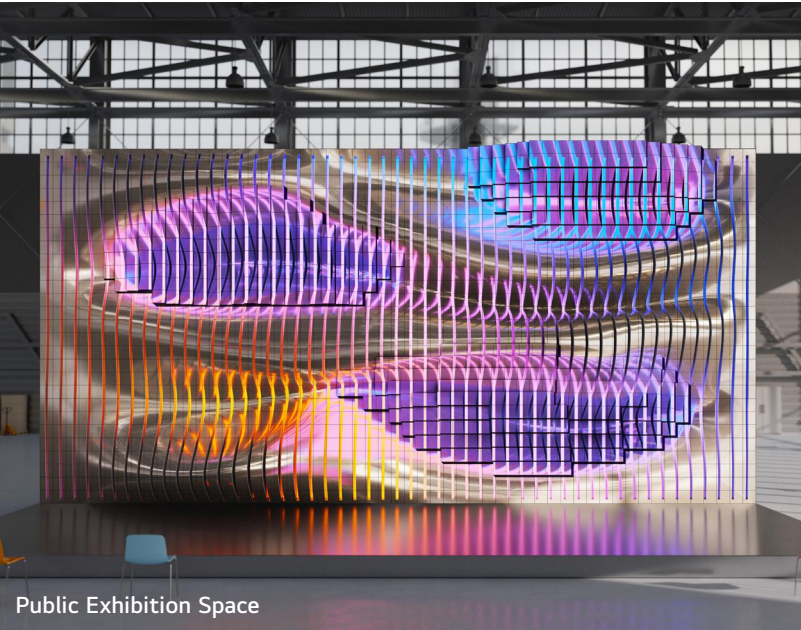
Company Lobby



Shopping Mall



Concert Hall



Public Exhibition Space



Gallery

LG TOTAL SOLUTION PACKAGE

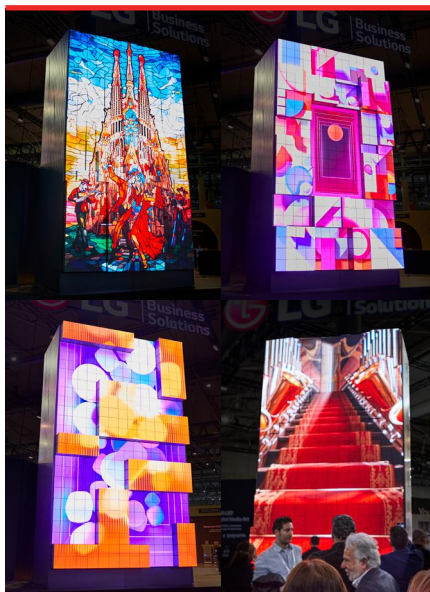
Design & Hardware



Optimized Design with Kinetic LED Technology

Not only does LG offer customized Kinetic LEDs, but a team of high professional designers provides a tailored H/W design paired with impressive media art that meets the needs of customers.

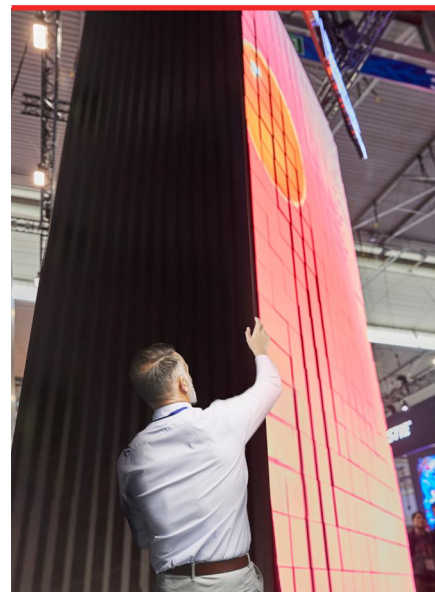
Content



Custom-made Content

Customers can expect to receive customized high-quality content that is individually mapped to kinetic movement produced by a dedicated content production team.

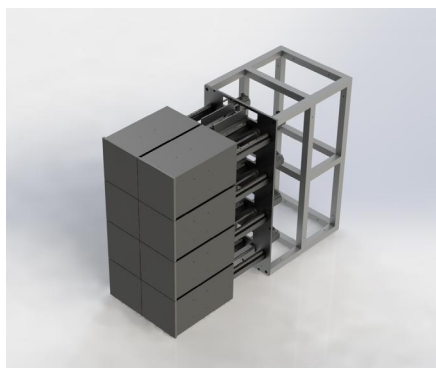
Installation + Maintenance



Reliable Solution Partner

LG provides a total solution package for our customers from installation to maintenance for successful project delivery.

SPECIFICATION



LED Display	Environment	Indoor
	Pixel Pitch (mm)	1.9
	Module Size (W × H)	250 × 250
	Number of Module (W × H, ea)	2 × 4
	Screen Size (W × H, mm) * Including gap between LED module	504 × 1,012
	Screen Resolution (W × H, pixels)	256 × 512
	Max. Brightness (nit)	1,000
	Contrast Ratio	10,000 : 1
	Motor	AC Servo 200 W
	Array (W × H, ea)	2 × 4
Kinetic Device	Movement Distance (mm)	300

* Specifications are subject to change without notice.



Download
LG Digital Connect
Mobile App
Google Play Store

www.lg.com/global/business/information-display
www.youtube.com/c/LGCommercialDisplay
www.facebook.com/LGInformationDisplay
www.linkedin.com/company/lginformationdisplay
www.twitter.com/LG_ID_HQ

LG may make changes to specifications and product descriptions without notice.
Copyright © 2024 LG Electronics Inc. All rights reserved. "LG Life's Good" is a registered trademark of LG Corp. The names of products and brands mentioned here may be the trademarks of their respective owners.



* All images are for illustrative purposes only.