

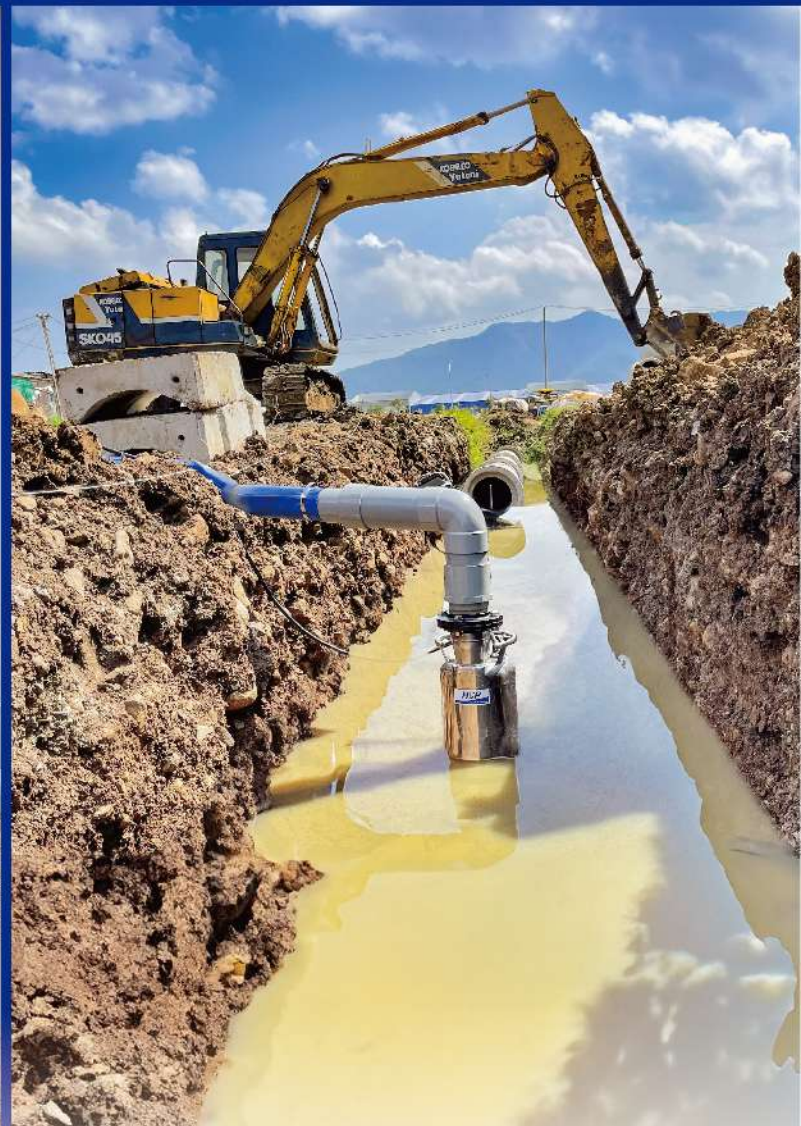


# External Float Control Set

Quest Float



PMP Float



A plug-and-play water level control solution. The external piggyback float control set provides easy and hassle-free urgent dewatering with single-phase pumps up to 3HP without an additional control panel.

Professional manufacturer of pump float switches, tank alarms, and pump controllers from the U.S.A





# External Float Control Set

浮球規格: Frequency 50/60Hz 110~240V Rated Voltage.

■ 提供兩種固定方式，更添便利性：

- A. 管箍與線夾可直接將浮球固定在1~2吋出水管，適合狹小空間使用。
- B. 嵌入式和旋緊式重錘，浮球任意長度輕鬆調整，適用於各種環境。

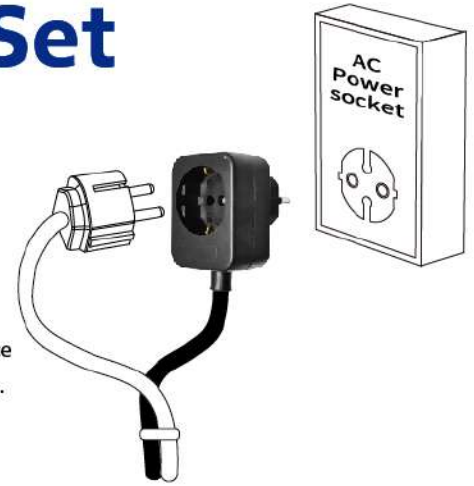
■ 大容量電流浮球開關和插座，適用於單相泵浦，範圍廣至0.1W~2.2kW，運轉電流達10(8)A和15A均可。

■ **Epoxy Waterproof Technology** : The float switch cable is treated with epoxy resin to enhance its waterproof capacity. This feature also prevents water and moisture from entering the float switch.

背負式插頭規格: ~250VAC 16A 符合CE認證

## Application

■ 小型集水坑    ■ 工地臨時排水    ■ 清水、一般污水



⚠ 插頭部位須注意防水和防潑，避免觸電發生危險。

Figure A

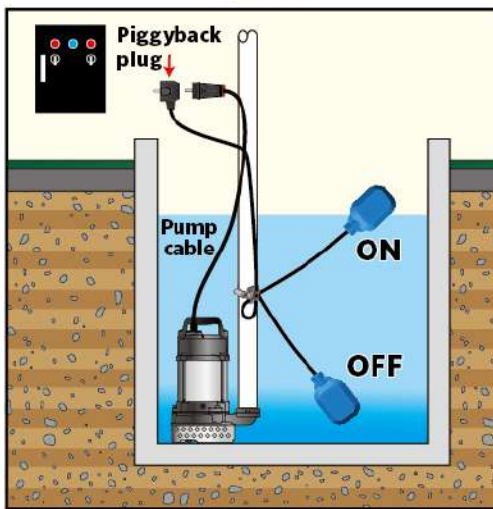
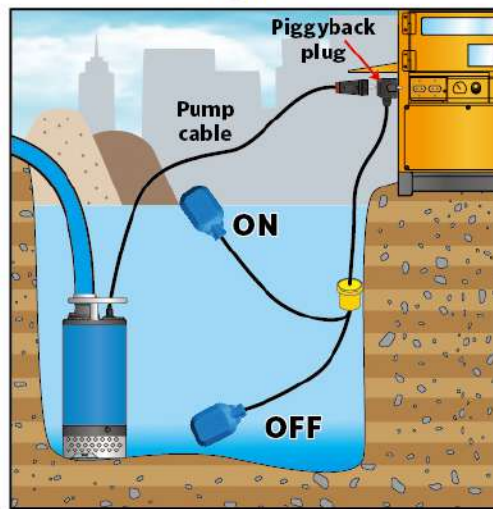


Figure B



外接式浮球組收納安全，可避免自帶浮球泵浦因泵浦移動或碰撞而造成浮球損壞的情況。

## A 管箍與線夾

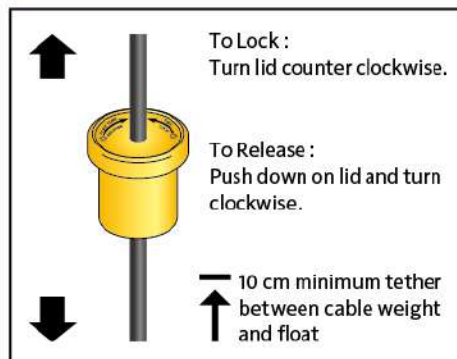


特製線夾：  
可固定浮球方向，  
自然的上下擺動，  
使電線不易折損，  
提高安全性。

45°

>10cm

## B Quest浮球搭配旋緊式重錘



To Lock :  
Turn lid counter clockwise.

To Release :  
Push down on lid and turn  
clockwise.

10 cm minimum tether  
between cable weight  
and float

## B PMP浮球搭配嵌入式重錘



高度便利性：  
嵌入式重錘可以依現場環境水位，  
套入浮球電線中，即可馬上使用。

## Specification

Model	Float	Rated Amps	Cable*Length	插頭型式	kg	Compatible Model
QTH072C-5PE+F	Quest	10(8)A	H07RN-F*5m	E+F	1.2	~1.5HP(1.1kW) 50Hz 220-240V
QTH072C-10PE+F	Quest	10(8)A	H07RN-F*10m	E+F	1.68	~1.5HP(1.1kW) 50Hz 220-240V
PMPSJOW2C-10PE+F	PMP	15A	SJOW*10m	E+F	1.9	~3HP(2.2kW) 50Hz 220-240V



Professionalism · Innovation · Service · Commitment  
**HCP PUMP MANUFACTURER CO., LTD.**  
www.hcppump.com



Distributor:





# QUEST<sup>®</sup> PUMP SWITCH



**ISO9001 : 2015 Certified**



**Epoxy Waterproof Technology**



**Residential**



**Commercial**



**Agriculture**



**Municipal**



**Industrial**



**Professional manufacturer of pump float switches,  
tank alarms, and pump controllers from the U.S.A**



SJE-Rhombus<sup>®</sup>, headquartered in Detroit Lakes, Minnesota, USA, has been recognized for its liquid-level control products since 1975.

Operating under ISO 9001 certification, SJE-Rhombus<sup>®</sup> also holds UL, cUL, CSA, TÜV, and CE certifications. SJE-Rhombus<sup>®</sup> continually ensures it meets customers' rigorous demands, offering control products designed to serve the residential, commercial, municipal, industrial, and wastewater treatment markets.

The exceptional product quality and superior customer service have earned us the trust and support of clients worldwide.

**Suzhou, China**



**Headquarters: Detroit Lakes, Minnesota**





## Features

- Quest® by CE and TUV Certified.
- 2 wire version without ground plate, normally open for pump down and normally closed for pump up.
- 3 wire SPDT version, normally open for pump down and normally closed for pump up.
- Includes an innovative one-piece cable weight for mounting; no clip to lose.
- Mechanically-activated, snap action contact, wide-angle pump switch designed for preference and dependability.
- **Epoxy Waterproof Technology** : The float switch cable is treated with epoxy resin to enhance its waterproof capacity. This feature also prevents water and moisture from entering the float switch, control panel, and pump, providing a safer and longer product life.

## Specification

- Cable : Flexible rubber cable H07RN-F, 1mm<sup>2</sup> 2 or 3 conductors.
- Float/Cable Weight :  
Non-toxic, corrosion resistant polypropylene housing.
- Electrical : Type Of Load R-M = Resistance-Motor Load  
24~250 VAC Rated Voltage.  
Maximum Pump Running Current : 10(8) amps  
Frequency : 50/60Hz  
Micro Disconnect : Automatic Life Cycles: 50,000 times  
Protection Rating : IP68

## Sectional Drawing



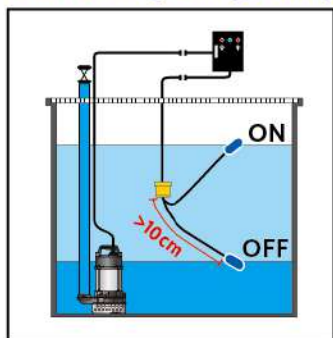
## Application

- This equipment is rated to 50°C, approved for use in non-potable water.
- Mild alkaline and mild acidity sewage water.

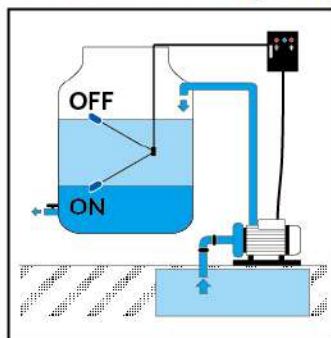
## Ordering Information

Model	Description	Wire	Cable*Length	kg
QTH072C-3	3(M)QSTD(2-wire)	2	H07RN-F*3m	0.75
QTH072C-5	5(M)QSTD(2-wire)	2	H07RN-F*5m	0.85
QTH073C-3	3(M)QSTSPDT	3	H07RN-F*3m	0.82
QTH073C-5	5(M)QSTSPDT	3	H07RN-F*5m	0.95
QTH073C-10	10(M)QSTSPDT	3	H07RN-F*10m	1.53

### Tank with pump and float switch(2-wire, 3-wire)



### Tank with float switch (3-wire)



### Cable weight instruction

To Release:  
Push down on lid and turn clockwise.



Note : Directly connect the cable to control panel, prevent using connector, if necessary, do not submerge the connector.



To Lock :  
Turn lid counter clockwise.

Slide weight up or down to desired position

10 cm minimum tether between cable weight and float

2 WIRE		3 WIRE-SPDT ONLY	
NORMALLY OPEN/PUMP DOWN		NORMALLY OPEN/PUMP DOWN	NORMALLY CLOSED/PUMP UP
<p>POWER SOURCE</p> <p>CONNECTIONS MADE IN DRY JUNCTION BOX</p> <p>BLUE</p> <p>BROWN</p> <p>SWITCH CABLE</p> <p>LOAD</p>		<p>POWER SOURCE</p> <p>CONNECTIONS MADE IN DRY JUNCTION BOX</p> <p>GREY</p> <p>BROWN</p> <p>BLACK</p> <p>SWITCH CABLE</p> <p>LOAD</p> <p>Note: Insulate brown wire on SPDT models</p>	<p>POWER SOURCE</p> <p>CONNECTIONS MADE IN DRY JUNCTION BOX</p> <p>GREY</p> <p>BROWN</p> <p>BLACK</p> <p>SWITCH CABLE</p> <p>LOAD</p> <p>Note: Insulate black wire on SPDT models</p>



Professionalism · Innovation · Service · Commitment  
**HCP PUMP MANUFACTURER CO., LTD.**  
[www.hcppump.com](http://www.hcppump.com)



Distributor: