

PRODUCT

Product Information

Air knocker SK series

Air knocker SK series (automatic powder removal device)

This powerful magnetic knocker has a long history of success and is marked by its blue body.

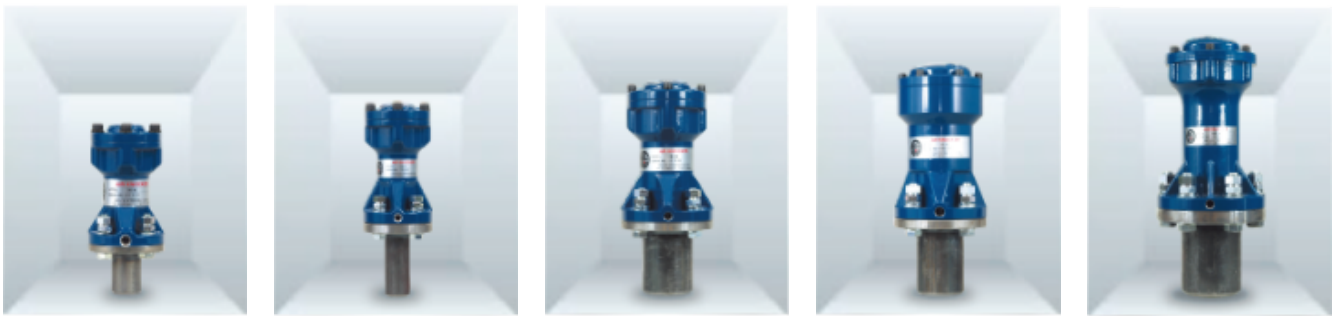
SK-30

SK-40

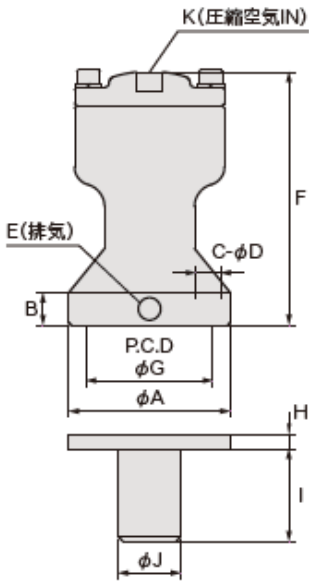
SK-60

SK-80

SK-100



Model	SK-30	SK-40	SK-60	SK-80	SK-100
Operating pressure	0.35 to 0.5 MPa	0.35 to 0.5 MPa	0.35 to 0.5 MPa	0.35 to 0.5 MPa	0.35 to 0.5 MPa
Airconsumptionpower *1	0.028ℓ/time	0.082 liters/time	0.228ℓ/time	0.455ℓ/time	1.012 liters/time
Impact force *2	1.0 to 1.5 Ns	3.3 to 5.1 Ns	7.1 to 10.8 Ns	19.3 to 29.5NS	44.5 to 67.9 Ns
Body weight	0.7kg	1.8kg	4.7kg	8.2kg	23.5kg
Total mass	1.3kg	3.8kg	9.0kg	13.5kg	40.8kg
Body Material	aluminum	aluminum	aluminum	aluminum	iron



*If the operating pressure is 0.35MPa or less, we will use a low pressure air knocker.

*The total mass includes the mass of the mounting bolts and base plate.

Paint color: Munsell 5PB3/9

- ✓ Please operate the Air Knocker SK type while it is attached to the base plate. If you operate it by itself, it may damage the internal parts.
- ✓ Be sure to install a wire shackle to prevent falls.
- ✓ Please be sure to install the reinforcing plate and reinforcing rib by referring to the "[Air knocker selection/installation method](#)" page.

Model	SK-30	SK-40	SK-60	SK-80	SK-100	
size	φ A	70	95	140	150	210
	B	10	16	16.5	18	twenty four
	C	4	4	4	4	6
	φ D	9	11	15	17	twenty one
	E	1/8	1/8	1/4	3/8	3/8
	F	(110)	(160)	(210)	(253)	(328)
	φ G	55	70	110	120	170
	H	6	12	12	14	twenty two
	I	40	90	100	110	145
	φ J	27.2	34.0	76.3	76.3	114.3
K	1/4	1/4	1/4	3/8	3/8	

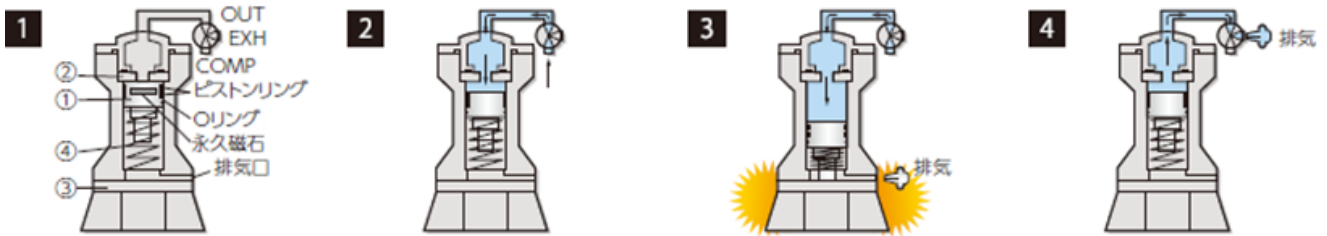
Unit: mm

*1 The air consumption is the capacity of the pressure chamber inside the air knocker.

*2 Impact force values are for operating pressures of 0.3 to 0.7 MPa.

*3 Total mass is the mass of the base plate with ribs.

Air knocker SK type operating principle



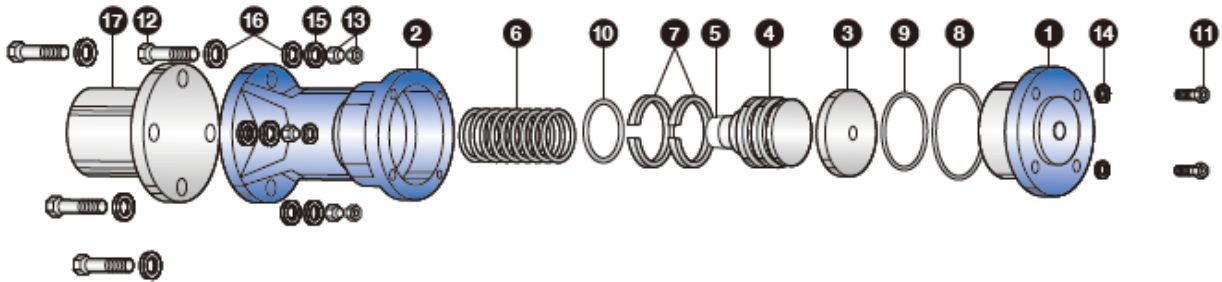
The magnetic piston ①, which has a permanent magnet embedded in it, is attached to the anchor plate ② by magnetic force.

When air (0.35MPa or more) is introduced by energizing the three-way solenoid valve, the magnetic piston is released at high speed from the magnet storage state.

The magnetic piston strikes the base plate ③, indirectly transmitting a shock wave to the hopper.

When the power supply to the three-way solenoid valve is cut off, the air is exhausted. The magnetic piston rises due to the return spring ④, and the magnetic force brings them into contact again (returning to the state [1]).

Parts diagram and names of each part of the Air Knocker SK type



①	Head flange	⑦	Piston ring	⑬	Hardlock Nut
②	Main unit case	⑧	Head flange O-ring	⑭	Spring washer
③	Anchor plate	⑨	O-ring for anchor plate (gasket only for SK-80, 100)	⑮	Spring washer
④	Magnetic Piston	⑩	Piston O-ring	⑯	Flat washer
⑤	Point Bush	⑪	Head flange bolt	⑰	Base plate
⑥	Return spring	⑫	Base Bolt		

*Do not hit the air knocker empty when it is removed from the base plate. This will damage the return spring.

*We recommend that you periodically tighten the mounting bolts. (This will protect the unit and prevent it from falling off.)