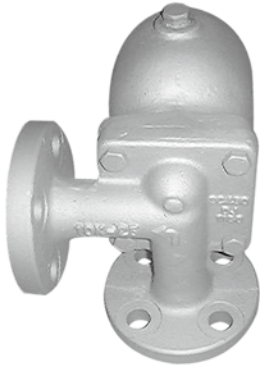


AIR VENT

Model
JAV-FF11

Angle Type

for water

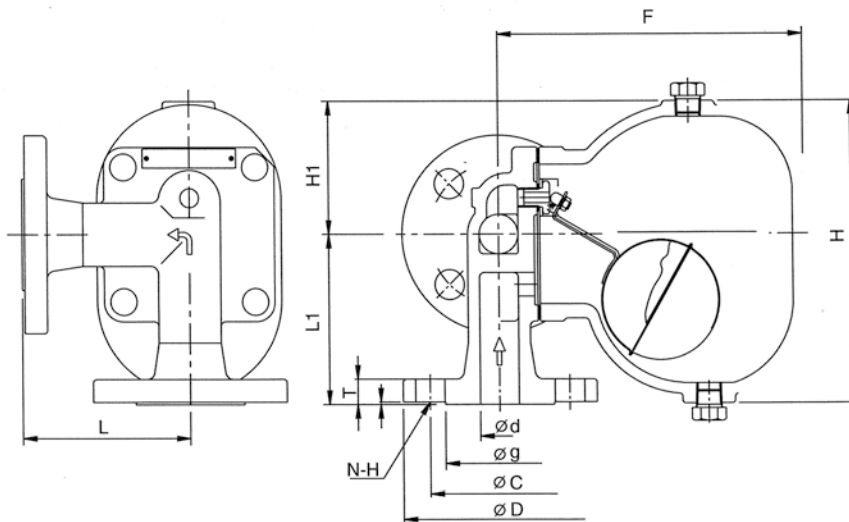


MATERIALS

NO.	PART NAME	Standard
1	Body	SC 480
2	Bonnet	SC 480
3	Seat	SUS 304
4	Ball Float	SUS 304
5	Lever	SUS 304
6	Disc	SUS 304
7	Lever Bracket	SUS 304
8	Nut	SUS 304
9	Drain Plug	SS 400
10	Vent Plug	SS 400
11	Pin	SUS 304
12	Seat Gasket	NON-ASBESTOS
13	Gasket	NON-ASBESTOS
14	Bolt	SNB7
15	Name Plate	BRASS
16	Rivet	SUS 304

SPECIFICATIONS

1. Design Pressure : 22Kg/cm²
2. Design Temperature : 220°C
3. Working Pressure : Max.16Kg/cm²
4. Connection : Angle Type Flange 15A-25A
5. Hydrostatic Test Pressure : 44,0Kg/cm²
6. Fluid : Water, Oil ... Etc.



DIMENSIONS

UNIT : mm

SIZE	d	L, L1	F	H1	H	PRESSURE (FLANGE)	FLANGE JIS B 2210					
							D	C	g	T	f	N-H
15A	15	105	197	84	191	10K FF, 16K FF	95	70	-	12	-	4-15
25A	25	105	197	84	191	10K FF, 16K FF	125	90	-	14	-	4-19