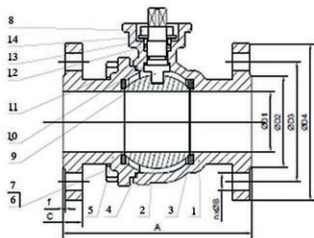
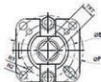
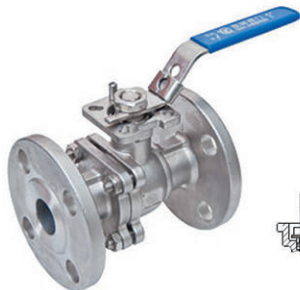


Stainless Steel Ball Valve, With High Mounting Pad, ANSI 150 PSI

Model : SMBA-F204, SMBA-F216



Specification Standards :

- Basic design and manufacture according to ASME B16.34
- Inspection and tested according to API 598
- Face to face according to ASME B16.10
- Flange end according to ASME B16.5

Features :

- 2-Piece body design, full port
- Lever handle operation
- Available upon special request
- Come with ISO High Mounting Pad 5211

Application :

- For general and industrial services
- Applicable medium : water, oil, gas

Materials :

No.	Description	Material
1	Body	CF8 / CF8M
2	Ball	CF8 / CF8M
3	Seat	PTFE
4	Gasket	PTFE
5	Cap	CF8 / CF8M
6	Bolt	SS304
7	Nut	SS304
8	Gland	SS316 / SS304
9	Stem	SS316 / SS304
10	Thrust washer	PTFE
11	O-ring	Viton
12	Stem packing	PTFE
13	Washer	SS304
14	Belleville washer	SS304

Test Requirements

Working Pressure	150 PSI (10 Bar)
Maximum Pressure	200 PSI (14 Bar)
Shell Test Pressure	300 PSI (21 Bar)
Applicable Temperature	≤ 150 °C

Dimensions

mm

Size	1/2"	3/4"	1"	1-1/4"	1-1/2"	2"	2-1/2"	3"	4"	5"	6"	8"
A	108	117	127	140	165	178	190	203	229	356	394	457
C	14.1	14.6	14.6	16.1	18.5	19.0	21.1	22.1	25.1	24.0	25.5	28.6
D1	15	20	25	32	40	50	65	80	100	125	150	200
D2	34	42.3	50.5	64	73.2	90	106.2	128.8	159.7	186	216	270
D3	60.3	70	79.4	89	98.4	120.5	139.5	152.5	190.5	215.9	241.4	298.5
D4	90	100	110	120	130	152	180	194	233	255	278	344
f	1.6	1.6	1.6	1.6	1.6	1.6	1.6	1.6	1.6	1.6	1.6	1.6
H	58	65	74	82	96	116	132	145	150	185	205	255
H1	4	5	10	10	14	15.5	16	18	20	25	28	35
nxØB	4-16	4-16	4-16	4-16	4-19	4-19	4-19	4-19	8-19	8-22	8-22	8-22
R1	6	6	6	6	8	8	10	10	10	12	14	14
R2	6	6	8	8	10	10	12	12	12	14	16	16
T X T	9X9	9X9	11X11	11X11	14X14	14X14	17X17	17X17	19X19	22X22	24X24	24X24