

# Speakerphone

## User Manual



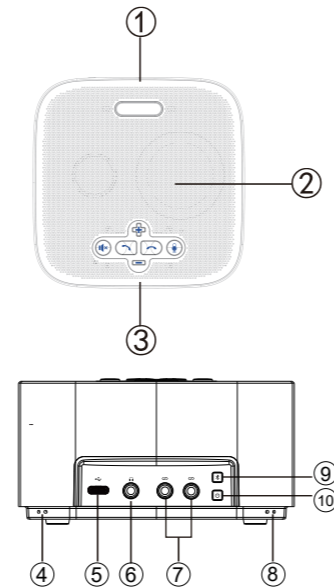
Version V1.1

### 3. Low battery warning

When the battery is lower than 10%, the first light turns red and with voice prompt (once every five minutes).



### 4. Button Function



- ① Status indicator
- ② Speaker
- ③ Function Keys

- ④ Microphone
- ⑤ USB Type-C
- ⑥ 3.5mm Jack
- ⑦ Expansion mic interface
- ⑧ Microphone
- ⑨ Bluetooth
- ⑩ Power

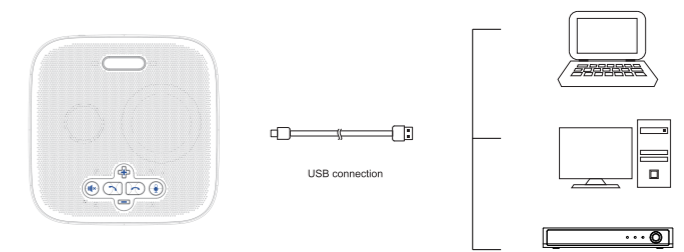
Button	Status	Function	Indicator light
	Speaker mute	ON/OFF Speaker mute	ON: Green OFF: Red
	Volume down	Decrease volume	LOGO Indicator: 10-level display
	Volume up	Increase volume	
	Answer	Answer when calling	
	Hung up	Hung up when calling	
	Microphone mute	ON/OFF microphone mute	ON: Green OFF: Red

Bluetooth status indicator (only for Bluetooth device)	Blue light flashing	Bluetooth is pairing
	Green light on	Bluetooth connected
Microphone status indicator	Red light on	Microphone mute
	Green light on	Microphone working normally
Speaker status indicator	Red light on	Speaker mute
	Green light on	Speaker working normally

Note: When adjusting the volume, the blue light changes with the volume. The blue progress bar increases / decreases when adjusting the volume. When the volume is turned off, the indicator is red. After the volume is adjusted, the green light will return to on at an interval of 2s.

### 5. Connection Introduction

#### 5.1 USB Connection



Once connected to your computer, it will automatically power on.

#### 5.2 Bluetooth Connection



- When the device is under normal working condition, press " ⌘ " to turn on Bluetooth for pairing. The Logo indicator light will turn blue and flashes.
- Put the mobile device or other devices to be connected in Bluetooth

device search mode, select the model of the device. The Logo indicator light will turn green and always on after a successful connection.

3. Each time you power on the device, it will automatically connect with the last successfully connected device if available.

4. To disconnect Bluetooth, please press the Bluetooth button again.

Note: when using Bluetooth connection, it will automatically power off after 15 minutes of inactivity or no source.

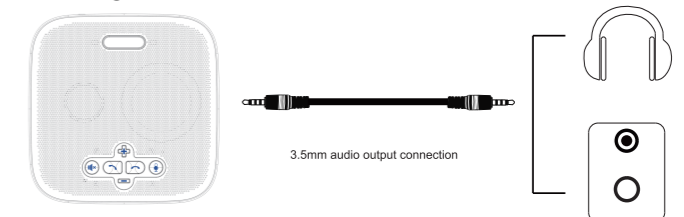
#### 5.3 Wireless Connection

1. Connect to your computer by using a bluetooth Dongle.

2. The Bluetooth Dongle will search for the Bluetooth automatically, and establish Bluetooth connection between the speakerphone and the Dongle. After a successful connection, the Logo indicator light will turn green and always on.

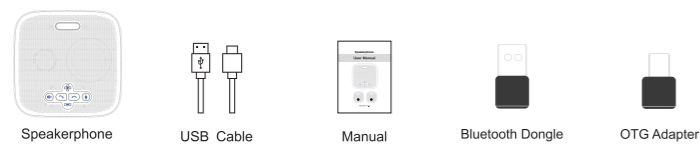


#### 5.4 Headset Connection



Connect to the headset jack using a 3.5mm headset cable. When the headset is connected, the speaker is automatically muted.

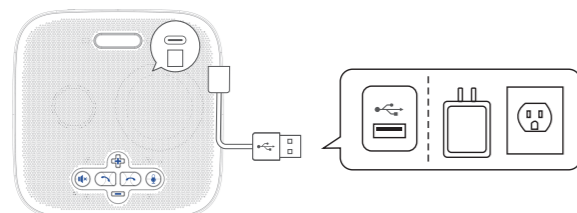
### 1. Packing List



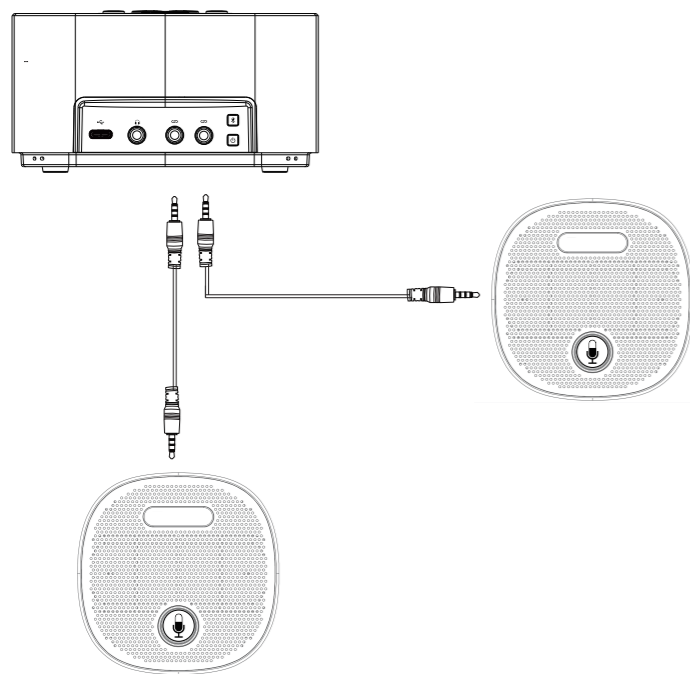
### 2. Charging

Plug the device into a USB power source. Fastest charge time: 3 hours(PD charging, 9V@2A); Regularly charge time up: 7 hours.

You can check the battery level from the power light.

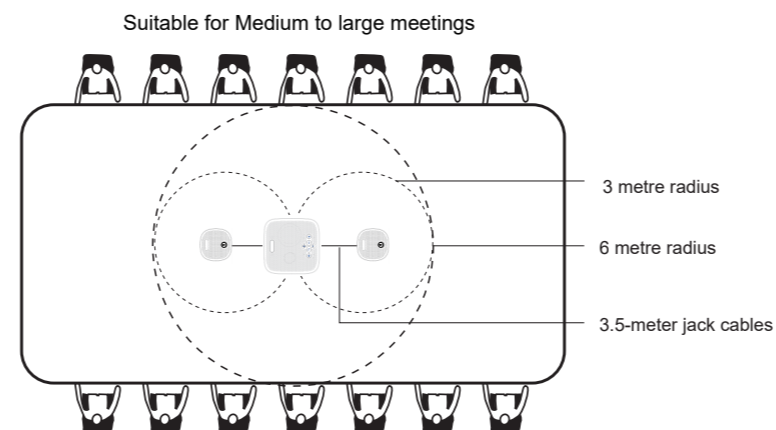


The two red interfaces are extension microphone interfaces, and the two 3.5mm connection cables provided as option in this product are connected to the extension microphone (Note: the 3.5mm connection cables provided as option are dedicated to the extension microphone and cannot be used as ordinary audio cables).

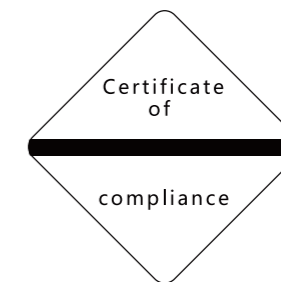


## 7.Pickup Range

### 7.1 Pickup Range



### 7.2 Application Scenarios



## 6.Technical Specifications

Item Name	USB / Bluetooth Speakerphone
Model No.	M6B
Bluetooth	BT5.0
Battery	8000mAH(Built-in lithium battery); Music time (up to 13 hours ); Battery life up to 18 hours; Fastest charge time: 3 hours; Regularly charge time up: 7 hours (Support PD2.0/3.0 charging, with maximum power up to 18W)
Connection Type	USB/Bluetooth/Wireless/ 3.5mm Jack *3 (including one for headset and two for expansion mics)
Meeting Room Size	15-30m <sup>2</sup>
Meeting With	Up to 15 attendees
Pickup Range	6 meters (19.68 feet)
Mics	Built in 8x mics
Microphone Type	Omni-directional (360 degree pickup range)
Microphone Sensitivity	-38dB
Noise Reduction	Yes
Full Duplex Audio	Yes
AEC	Yes
Frequency Range	100Hz to 20kHz
Speaker	5W/110dB
Interface	1 x Type-C, 1x 3.5mm audio port,2x3.5mm port for expansion mics
System Requirements	Windows 7/8/10 or above,MacOS 10.7 or above,Chrome OS V29.01547 or above
Application Support	Software: Skype, FaceTime, Zoom, Microsoft Teams, Hangouts, OBS, Xsplit, etc.
Working Temperature	0°~50°C
Storage Temperature	-10°~+60°C
Working Humidity	20%~85% RH (non-condensing)
Power Supply	USB: DC 5V@3A Maximum or DC 9V@ 2A Maximum
Product Size	143mm*143mm*75mm/261*191*126mm (before/after packing)
Product Weight	1.02KG /1.67KG(Net / Gross Weight)(Expansion mics included)
Expansion Microphone	
Item Name	Micphone
Interface	1x3.5mm jack
Pickup Range	3 meters
Product Size	73.7*74*20mm(Net Weight)
Product Weight	95.5g(Net Weight)

## 8.Warranty

All products purchased from our company are guaranteed to keep in good repair for 36 months. If there are any quality problems during the guarantee period, we will maintain them for free. Under any of the following conditions, related maintenance costs will be collected:

1. Product was not normally used.
2. Fire, electric shock, outside object collapse or other natural disasters causing the equipment damaged.
3. Unauthorized repair, misuse, abuse or change.



Connect, collaborate and create with Tenveo.