








COMET

2U Mono-Glass Module
645W-670W

Technical Features:

-  Partial Shading Optimisation
-  Better Temperature Coefficient
-  High Temperature Restriction
-  Micro-crack Resistance
-  Higher Power
-  Lower BOS
-  More Aesthetic Values



reddot winner 2023



Product Warranty
(Extendable to 25years*)



Performance
Warranty



670W

Output

24.8%

Efficiency

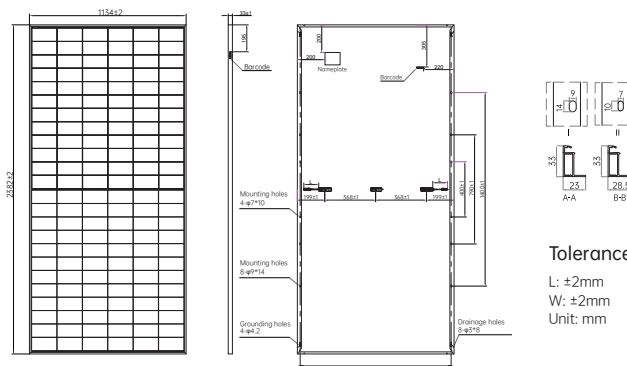
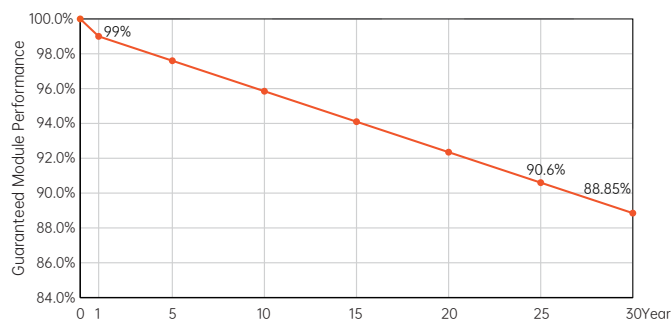
≤1%

First-year Degradation

≤0.35%

Annual Degradation from Year 2-30

30-year Linear Performance Warranty



Tolerance

L: ±2mm
W: ±2mm
Unit: mm

Electrical Characteristics (STC: AM1.5 1000W/m² 25°C NOCT: AM1.5 800W/m² 20°C 1m/s) Power Tolerance: 0~ + 3%

| Module Type | AIKO-G645-MCH72Mw | | AIKO-G650-MCH72Mw | | AIKO-G655-MCH72Mw | | AIKO-G660-MCH72Mw | | AIKO-G665-MCH72Mw | | AIKO-G670-MCH72Mw | |
|--------------------------|-------------------|-------|-------------------|-------|-------------------|-------|-------------------|-------|-------------------|-------|-------------------|-------|
| | STC | NOCT | STC | NOCT | STC | NOCT | STC | NOCT | STC | NOCT | STC | NOCT |
| P _{max} [W] | 645 | 486 | 650 | 490 | 655 | 493 | 660 | 497 | 665 | 501 | 670 | 505 |
| V _{oc} [V] | 54.30 | 51.28 | 54.40 | 51.37 | 54.50 | 51.47 | 54.60 | 51.56 | 54.70 | 51.66 | 54.80 | 51.75 |
| V _{mp} [V] | 45.00 | 42.50 | 45.10 | 42.59 | 45.20 | 42.69 | 45.30 | 42.78 | 45.40 | 42.87 | 45.50 | 42.97 |
| I _{sc} [A] | 15.06 | 12.18 | 15.12 | 12.23 | 15.18 | 12.28 | 15.24 | 12.32 | 15.30 | 12.37 | 15.36 | 12.42 |
| I _{mp} [A] | 14.34 | 11.44 | 14.42 | 11.51 | 14.50 | 11.57 | 14.57 | 11.63 | 14.65 | 11.69 | 14.73 | 11.76 |
| Module Efficiency | 23.9% | | 24.0% | | 24.2% | | 24.4% | | 24.6% | | 24.8% | |

Mechanical Specification

| | |
|----------------|---|
| Cell Type | N-Type ABC |
| Glass | 3.2 mm tempered glass |
| Frame | Anodized aluminum |
| Cable | 4mm ² (IEC) 12AWG(UL) +350mm, -280mm/±1400mm or Customized Length |
| No. of Cells | 144(6*24) |
| Junction Box | IP68, 3 bypass diodes |
| Connector | MC4 Compatible/MC4-Evo2 |
| Weight | 28.2kg±3% |
| Dimension | 2382*1134*33mm |
| Package Detail | 33pcs per pallet / 132pcs per 20'GP / 660pcs per 40'HC |

Temperature Ratings (STC)

| | |
|---|-------------|
| Temperature Coefficient of I _{sc} | + 0.05%/ °C |
| Temperature Coefficient of V _{oc} | - 0.22%/ °C |
| Temperature Coefficient of P _{max} | - 0.26%/ °C |

Installation Guide

| | |
|---|-------------------------------|
| Operation Temperature | -40°C - +85°C |
| Maximum Series Fuse Rating | 30A |
| Protection Class | Class II |
| V _{oc} and I _{sc} Tolerance | ±3% |
| Maximum System Voltage | DC1500V |
| Maximum Static Loading | Front 5400Pa Back 2400Pa |
| Hail Test | 25 mm diameter hail at 23 m/s |
| Fire Rating | IEC Class C |

