

Lighting: Incandescent and Compact Fluorescent Lighting Fixture, VIN, VCF, VLED Series

Restricted Breathing and Dust protection by enclosure

Zone 2 – 21 & 22

Specification

Body material : Marine grade copper-free aluminium alloy with polyester powder coated, RAL 7032 (grey)
Glass globe : Borosilicate glass
Guard : Stainless steel
Sealing (O-ring) : Silicone

Technical Data

Hazardous Area	Gas	Dust
Zones	2	21 & 22
Equipment Group/Category	II 3G	II 2D
Symbol of Protection	Ex nR IIC T** Gc	Ex tb IIIC T** °C Db
Conformity to standards	EN IEC 60079-0:2018, EN IEC 60079-15:2019, EN 60079-31:2014	
Ambient Temperature	-20°C to +55°C	
Index of Protection	IP66	
Mounting	Ceiling, Pendant, Stanchion or Bracket mounting	
Connection	L, N and PE ; for 1-4mm. ² cable	
Rated Voltage	220/230V.ac ±5% 50Hz.	

** See temperature class on catalogue number table.



Ceiling mounting

Pendant mounting



Stanchion mounting

Bracket mounting

Catalogue Number Logic

V ■ ■	-	■ ■	□	□ □
Series		Lamp Watt	Accessories	Mounting
VIN Incandescent		(see ordering requirement table below)	R Reflector	C Ceiling
VCF Compact Fluorescent				P Pendant
VLED LED Bulb				S Stanchion
				B Bracket

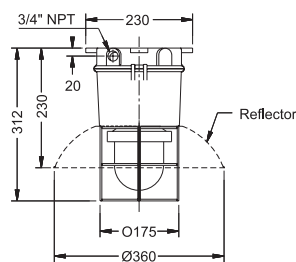
Ordering Requirements

Cat. No.	Lamp Watt	Voltage	Lamp Model	Temp. Class (for zone 2)		Max. Surface Temp.* (for zone 21 & 22)	
				Ta 40 °C	Ta 55 °C	Ta 40 °C	Ta 55 °C
Incandescent Lamp							
VIN-60 □ □ □	60W.	220V.ac 50Hz.	CLAS 60W E27 A55 (730lm)	T4	T4	T135°C	T135°C
VIN-100 □ □ □	100W.		CLAS 100W E27 A55 (1380lm)				
Compact Fluorescent Lamp							
VCF-11 □ □ □	11W.	220V.ac 50Hz.	Genie 11W CDL E27 (570lm)	T6	T5	T80°C	T100°C
VCF-14 □ □ □	14W.		Genie 14W CDL E27 (760m)	T6	T5	T80°C	T100°C
VCF-18 □ □ □	18W.		Genie 18W CDL E27 (1040m)	T5	T4	T100°C	T135°C
LED Bulb (non-dim)							
VLED-05 □ □ □	5W.	230V.ac 50Hz.	Essential LEDBulb 5W E27 6500K A60 (540lm)	T6	T5	T80°C	T100°C
VLED-07 □ □ □	7W.		Essential LEDBulb 7W E27 6500K A60 (720lm)				
VLED-09 □ □ □	9W.		Essential LEDBulb 9W E27 6500K A60 (950lm)				
VLED-12 □ □ □	12W.		Essential LEDBulb 12W E27 6500K A60 (1250lm)				

Remark *: The maximum surface temperatures are specified for dust free condition. The dust layer which may cover around the lighting fixture will cause to higher surface temperature.

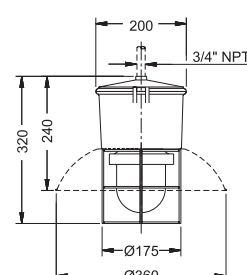
Dimension

Ceiling mounting



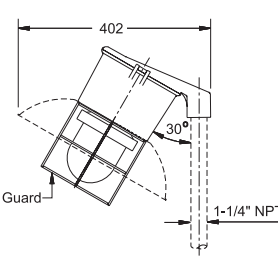
Approx. 3.72kgs.

Pendant mounting



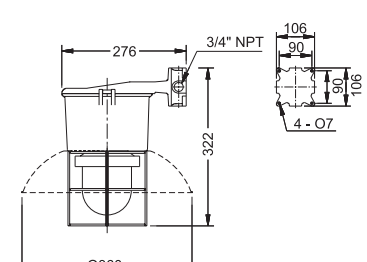
Approx. 3.85 kgs.

Stanchion mounting



Approx. 4.26 kgs.

Bracket mounting



Approx. 4.61 kgs.