

Lighting: Fluorescent & LED Lighting Fixture (Ceiling), ELPG Series

Flameproof and Dust protection by enclosure

Zone 1 & 2 – 22



Application

Can be installed in hazardous areas designated as zone 1 and 2 – 21 and 22.

For indoor/outdoor use where protection against dirt, water and moisture is necessary.

Typical applications include oil refineries, petrochemical plants, pulp and paper mills.

Specification

- Body material : Marine grade copper-free aluminium alloy with polyester powder coated, RAL 7032 (grey)
- Tube : Borosilicate glass
- Internal reflector : Anodized aluminium
- Guard (option) : Stainless steel, SUS 304

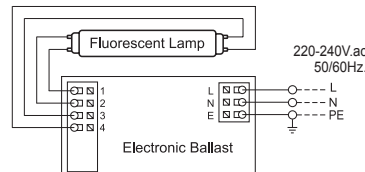
Technical Data

Hazardous Area	Gas	Dust
Zones	1 & 2	22
Equipment Group/Category	II 2G	II 3D
Symbol of Protection	Ex d IIB T6 Gb	Ex tc IIIB T85°C Dc
Conformity to standards	EN IEC 60079-0:2018, EN 60079-1:2014, EN 60079-31:2014	
Ambient Temperature	-20°C to +50°C	
Index of Protection	IP54	
Entries	M20x1.5, M25x1.5, 1/2" NPT or 3/4" NPT	
Mounting	Ceiling mount	
Rated Voltage	110-240V.ac 50/60Hz. (THDi ≤ 10%, P.F. ≥ 0.98)	

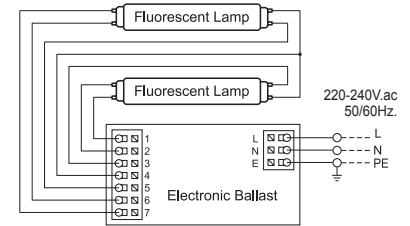


Wiring Diagram

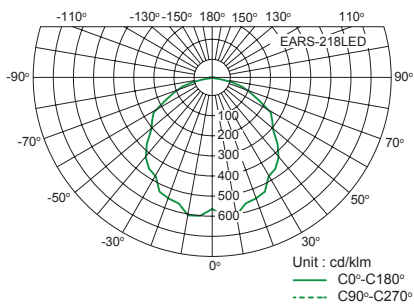
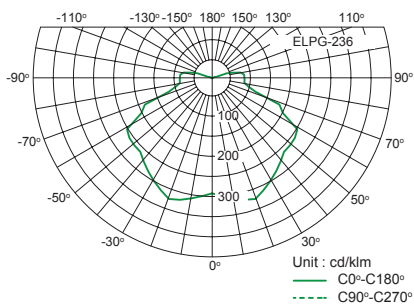
Electronic ballast for fluorescent lamp; 1x 14W., 1x 28W., 1x 18W. and 1x 36W.



Electronic ballast for fluorescent lamp; 2x 14W., 2x 28W., 2x 18W. and 2x 36W.



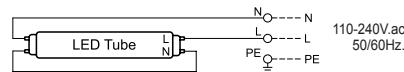
Luminous Intensity Distribution Curve



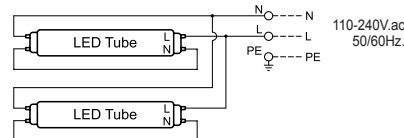
Complete photometrics, please contact us.

LED Tube (Single-ended), Internal driver

1x Lamp



2x Lamp

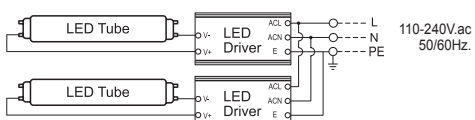


LED Tube (Double-ended) with External driver

1x Lamp



2x Lamp



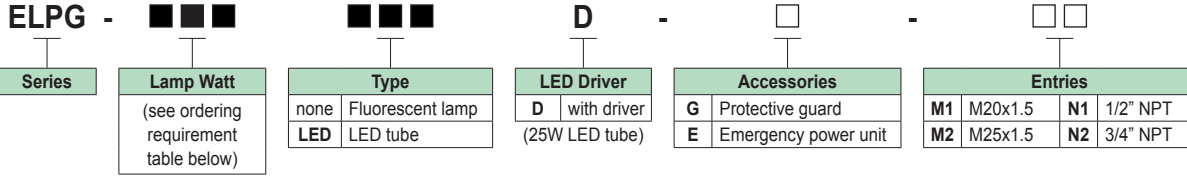


Lighting: Fluorescent & LED Lighting Fixture (Ceiling), ELPG Series

Flameproof and Dust protection by enclosure

Zone 1 & 2 – 22

Catalogue Number Logic



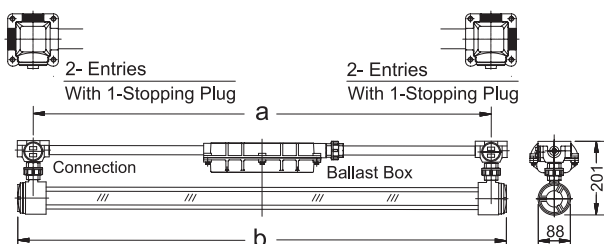
Ordering Requirements

Cat. No.	Lamp Watt	Voltage	Ballast	Temp. Class (for zone 1 & 2)		Max. Surface Temp.* (for zone 22)		Volume (cm ³)	Dimension in mm.		Approx. Weight (kgs.)							
				Ta 40°C	Ta 50°C	Ta 40°C	Ta 50°C		a	b								
T8 Fluorescent Lamp																		
ELPG -118	- □ - □□	1x 18W.	220-240V.ac 50/60Hz.	Electronic	T6	T6	T85°C	T85°C	1,680	620	715	7.45						
ELPG -218	- □ - □□	2x 18W.							3,700	685	725	10.15						
ELPG -136	- □ - □□	1x 36W.							3,010	1255	1333	9.85						
ELPG -236	- □ - □□	2x 36W.							6,350	1232	1325	15.38						
T5 Fluorescent Lamp																		
ELPG -114	- □ - □□	1x 14W.	220-240V.ac 50/60Hz.	Electronic	T6	T6	T85°C	T85°C	1,680	620	715	7.45						
ELPG -214	- □ - □□	2x 14W.							3,700	685	725	10.15						
ELPG -128	- □ - □□	1x 28W.							3,010	1255	1333	9.85						
ELPG -228	- □ - □□	2x 28W.							6,350	1232	1325	15.38						
LED Tube																		
ELPG -105LED	- □ - □□	1x 5W.	110-240V.ac 50/60Hz.	-	T6	T6	T85°C	T85°C	1,680	620	715	7.45						
ELPG -205LED	- □ - □□	2x 5W.							3,700	685	725	10.15						
ELPG -106LED	- □ - □□	1x 6W.							1,680	620	715	7.45						
ELPG -206LED	- □ - □□	2x 6W.							3,700	685	725	10.15						
ELPG -108LED	- □ - □□	1x 8W.							1,680	620	715	7.45						
ELPG -208LED	- □ - □□	2x 8W.							3,700	685	725	10.15						
ELPG -109LED	- □ - □□	1x 9W.							1,680	620	715	7.45						
ELPG -209LED	- □ - □□	2x 9W.							3,700	685	725	10.15						
ELPG -114LED	- □ - □□	1x 14W.							110-240V.ac 50/60Hz.	-	T6	T6	T85°C	T85°C	3,010	1255	1333	7.45
ELPG -214LED	- □ - □□	2x 14W.													6,350	1232	1325	10.15
ELPG -115LED	- □ - □□	1x 15W.	3,010	1255	1333	7.45												
ELPG -215LED	- □ - □□	2x 15W.	6,350	1232	1325	10.15												
ELPG -116LED	- □ - □□	1x 16W.	3,010	1255	1333	7.45												
ELPG -216LED	- □ - □□	2x 16W.	6,350	1232	1325	10.15												
ELPG -118LED	- □ - □□	1x 18W.	3,010	1255	1333	9.85												
ELPG -218LED	- □ - □□	2x 18W.	6,350	1232	1325	15.38												
ELPG -120LED	- □ - □□	1x 20W.	3,010	1255	1333	9.35												
ELPG -220LED	- □ - □□	2x 20W.	6,350	1232	1325	15.38												
ELPG -122LED	- □ - □□	1x 22W.	3,010	1255	1333	9.38												
ELPG -222LED	- □ - □□	2x 22W.	6,350	1232	1325	15.38												
ELPG -125LEDD	- □ - □□	1x 25W.	110-240V.ac 50/60Hz.	LED Driver	T6	T6	T85°C	T85°C	3,010	1255	1333	9.38						
ELPG -225LEDD	- □ - □□	2x 25W.							6,350	1232	1325	15.38						

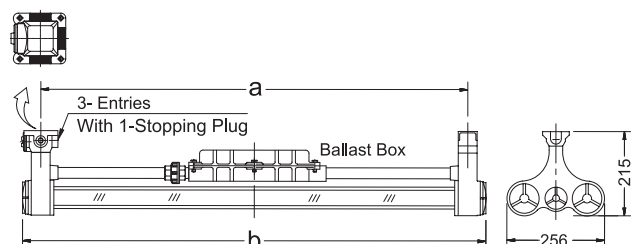
Lighting source; cool white (6500K) are standard and/or warm white (3000K), please specify.

Dimension

1x Lamp



2x Lamp



Remark *: The maximum surface temperatures are specified for dust free condition. The dust layer which may cover around the lighting fixture will cause to higher surface temperature.