

Lighting: Fluorescent & LED Lighting Fixture (Pendant), EARS Series

Flameproof and Dust protection by enclosure

Zone 1 & 2 – 22



Application

Can be installed in hazardous areas designated as zone 1 and 2 – 21 and 22.

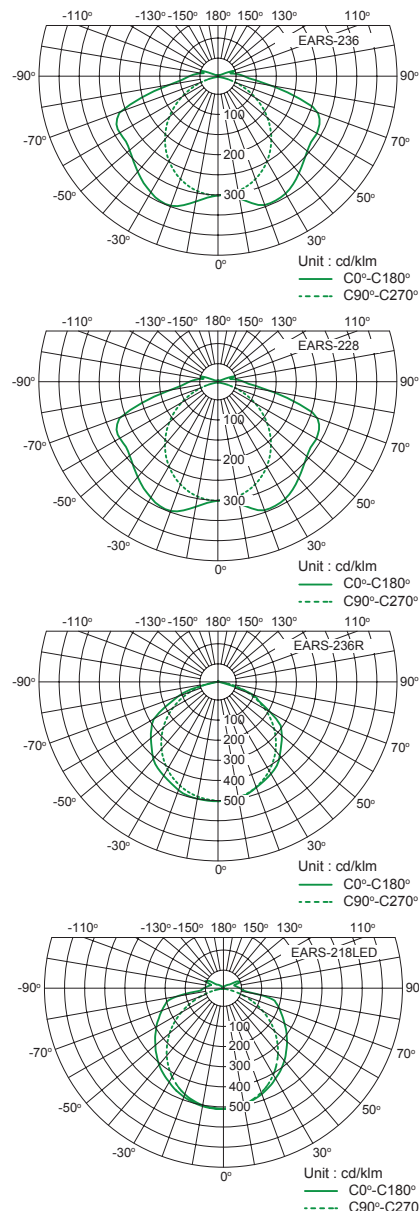
For indoor/outdoor use where protection against dirt, water and moisture is necessary.

Typical applications include oil refineries, petrochemical plants, pulp and paper mills.

Specification

- Body material : Marine grade copper-free aluminium alloy with polyester powder coated, RAL 7032 (grey)
- Tube : Borosilicate glass
- Reflector (option) : Sheet steel with polyester powder coated, RAL 9016 (white)
- Guard (option) : Stainless steel, SUS 304

Luminous Intensity Distribution Curve



Complete photometrics, please contact us.

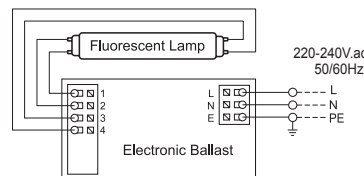
Technical Data

Hazardous Area	Gas	Dust
Zones	1 & 2	22
Equipment Group/Category	II 2G	II 3D
Symbol of Protection	Ex d IIB T6 Gb	Ex tc IIIB T85°C Dc
Conformity to standards	EN IEC 60079-0:2018, EN 60079-1:2014, EN 60079-31:2014	
Ambient Temperature	-20°C to +50°C	
Index of Protection	IP54	
Entries	2- 3/4" NPT	
Mounting	Pendant mount	
Rated Voltage	110-240V.ac 50/60Hz. (THDi ≤ 10%, P.F. ≥ 0.98)	

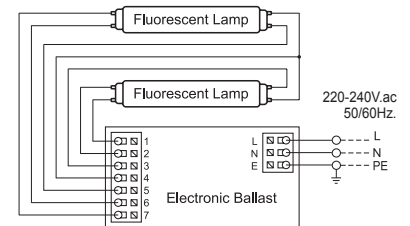


Wiring Diagram

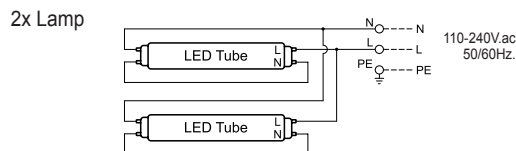
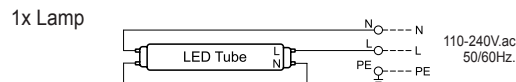
Electronic ballast for fluorescent lamp;
1x 14W., 1x 28W., 1x 18W. and 1x 36W.



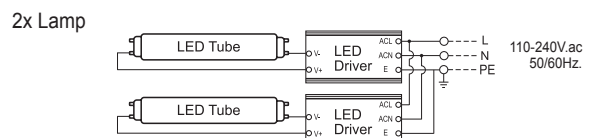
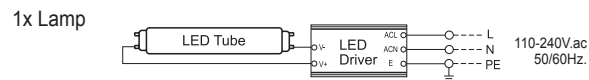
Electronic ballast for fluorescent lamp;
2x 14W., 2x 28W., 2x 18W. and 2x 36W.



LED Tube (Single-ended), Internal driver



LED Tube (Double-ended) with External driver



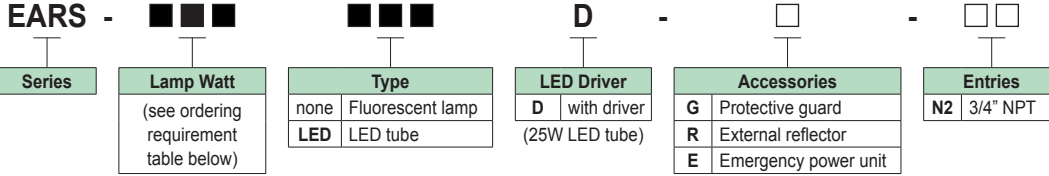


Lighting: Fluorescent & LED Lighting Fixture (Pendant), EARS Series

Flameproof and Dust protection by enclosure

Zone 1 & 2 – 22

Catalogue Number Logic

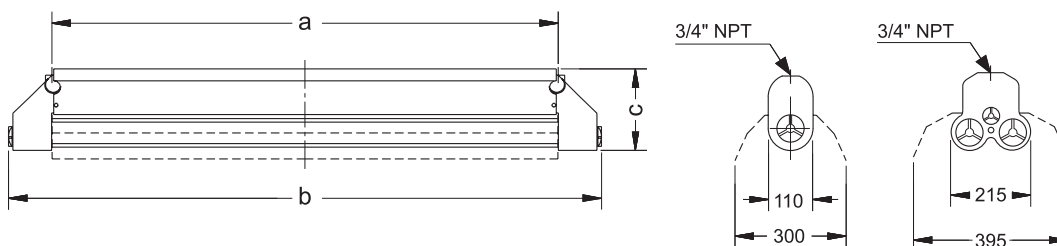


Ordering Requirements

Cat. No.	Lamp Watt	Voltage	Ballast	Temp. Class (for zone 1 & 2)		Max. Surface Temp.* (for zone 22)		Volume (cm ³)	Dimension in mm.			Approx. Weight (kgs.)										
				Ta 40°C	Ta 50°C	Ta 40°C	Ta 50°C		a	b	c											
T8 Fluorescent Lamp																						
EARS -118	- □ - □□	1x 18W.	220-240V.ac 50/60Hz.	Electronic	T6	T6	T85°C	T85°C	3,740	567	722	198	12.15									
EARS -218	- □ - □□	2x 18W.							4,450				17.10									
EARS -136	- □ - □□	1x 36W.							5,020	1180	1330	198	20.00									
EARS -236	- □ - □□	2x 36W.							7,030				27.35									
T5 Fluorescent Lamp																						
EARS -114	- □ - □□	1x 14W.	220-240V.ac 50/60Hz.	Electronic	T6	T6	T85°C	T85°C	3,740	567	722	198	12.15									
EARS -214	- □ - □□	2x 14W.							4,450				17.10									
EARS -128	- □ - □□	1x 28W.							5,020	1180	1330	198	20.00									
EARS -228	- □ - □□	2x 28W.							7,030				27.35									
LED Tube																						
EARS -105LED	- □ - □□	1x 5W.	110-240V.ac 50/60Hz.	-	T6	T6	T85°C	T85°C	3,740	567	722	198	12.15									
EARS -205LED	- □ - □□	2x 5W.							4,450				17.10									
EARS -106LED	- □ - □□	1x 6W.							3,740				12.15									
EARS -206LED	- □ - □□	2x 6W.							4,450				17.10									
EARS -108LED	- □ - □□	1x 8W.							3,740				12.10									
EARS -208LED	- □ - □□	2x 8W.							4,450				17.15									
EARS -109LED	- □ - □□	1x 9W.							3,740				12.10									
EARS -209LED	- □ - □□	2x 9W.							4,450				17.15									
EARS -114LED	- □ - □□	1x 14W.							110-240V.ac 50/60Hz.				-	T6	T6	T85°C	T85°C	5,020	1180	1330	198	12.10
EARS -214LED	- □ - □□	2x 14W.	7,030	17.15																		
EARS -115LED	- □ - □□	1x 15W.	5,020	12.10																		
EARS -215LED	- □ - □□	2x 15W.	7,030	17.15																		
EARS -116LED	- □ - □□	1x 16W.	5,020	12.10																		
EARS -216LED	- □ - □□	2x 16W.	7,030	17.15																		
EARS -118LED	- □ - □□	1x 18W.	5,020	12.10																		
EARS -218LED	- □ - □□	2x 18W.	7,030	23.15																		
EARS -120LED	- □ - □□	1x 20W.	5,020	17.15																		
EARS -220LED	- □ - □□	2x 20W.	7,030	25.0																		
EARS -122LED	- □ - □□	1x 22W.	5,020	17.15																		
EARS -222LED	- □ - □□	2x 22W.	7,030	25.0																		
EARS -125LEDD	- □ - □□	1x 25W.	110-240V.ac 50/60Hz.	LED Driver	T6	T6	T85°C	T85°C		5,020	1180	1330						198				17.15
EARS -225LEDD	- □ - □□	2x 25W.								7,030												25.0

Lighting source; cool white (6500K) are standard and/or warm white (3000K), please specify.

Dimension



Remark *: The maximum surface temperatures are specified for dust free condition. The dust layer which may cover around the lighting fixture will cause to higher surface temperature.