

Application

The EAH fixture hangers are designed for suspension or pipe pendant mounting of the lighting fixtures. They are suitable for use in zone 1, 2 and zone 22 explosive atmospheres.

Specification

Body material : Marine grade copper-free aluminium alloy with polyester powder coated, RAL 7032 (Grey)

Technical Data

Hazardous Area	Gas	Dust
Zones	1 & 2	22
Equipment Group/Category	II 2G	II 3D
Symbol of Protection	Ex d IIB Gb	Ex tc IIIB Dc
Conformity to Standards	EN IEC 60079-0:2018, EN 60079-1:2014, EN 60079-31:2014	
Ambient Temperature	-20°C to +75°C	
Index of Protection	IP54	

Catalogue Number Logic

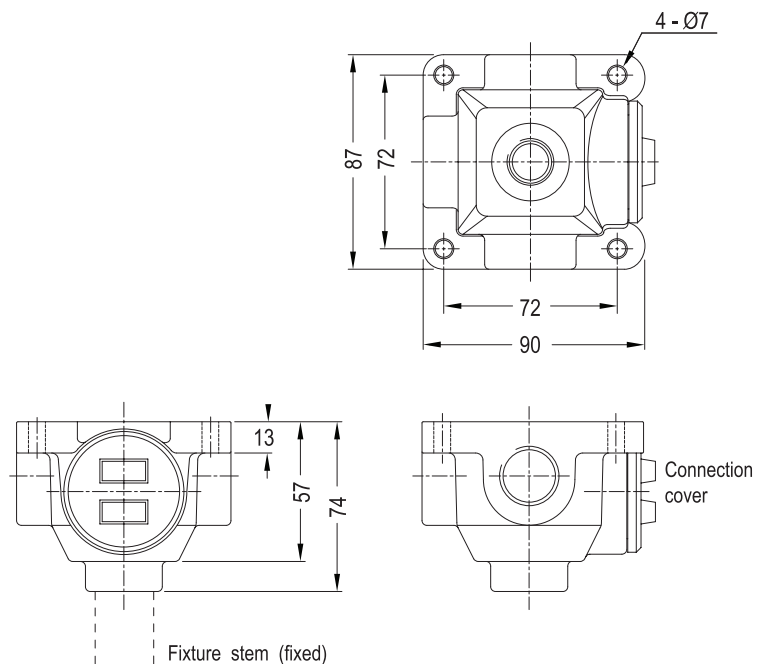
EAH	○	■	■
Series	Type	Entries	Fixture stem
C	2-hubs straight	1 1/2" NPT	1 1/2" NPT
T	3-hubs	2 3/4" NPT	2 3/4" NPT



Ordering Requirements

Cat. No.	Diagram	Entries Thread	Fixture Stem Size	Volume (cm³)	Approx. Weight (kgs.)
2- Hubs straight					
EAHC 11		1/2" NPT	1/2" NPT	100	0.708
EAHC 12			3/4" NPT	110	
EAHC 21		3/4" NPT	1/2" NPT	110	0.698
EAHC 22			3/4" NPT	120	
3- Hubs					
EAHT 11		1/2" NPT	1/2" NPT	110	0.786
EAHT 12			3/4" NPT	120	
EAHT 21		3/4" NPT	1/2" NPT	130	0.778
EAHT 22			3/4" NPT	130	

Dimension



Note : For entries by conduit, the sealing fitting and compound (flame arresting element) shall be used at the point of entries to lighting fixture.