

Conduit Fitting: Nipple, DNP Series

Flameproof and Dust protection by enclosure

Zone 1 & 2 – 21 & 22



Application

The DNP nipples are accessories cylindrical shaped, with ends male threaded. To connect either female threaded entries.

Specification

Material : Intermediate Metal Conduit (IMC)
 Finishing galvanize coated thread,
 Stainless Steel, SUS 304,
 Stainless Steel, SUS 316,
 Brass (optional nickel-plated brass)

Standard NPT thread:

ANSI/ASME B1.20.1

On request:

Long length

Technical Data

Hazardous Area	Gas	Dust
Zones	1 & 2	21 & 22
Equipment Group/Category	Ex II 2G	Ex II 2D
Symbol of Protection	Ex db IIC Gb Ex eb IIC Gb	Ex tb IIIC Db
Certificate No.	KDB 21 ATEX 0037U IECEx KDB 21.0007U	
T Rating	Temperature class of enclosure to which will be connected.	
Conformity to Standards	EN IEC 60079-0:2018, EN 60079-1:2014, EN 60079-7:2016, EN 60079-31:2014 IEC 60079-0:2017, IEC 60079-1:2014-06, IEC 60079-7:2015, IEC 60079-31:2013	
Ambeint Temperature	-40°C to +80°C (-60°C to +150°C stainless steel or Brass)	
Index of Protection	IP66	

Catalogue Number Logic

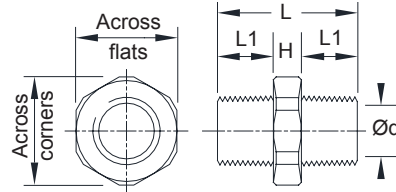
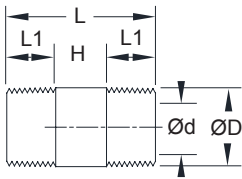
DNP - [Series] - [Thread] - [Length] [Material]

Material	Code	Description
I	IMC	Stainless steel, SUS 304
B	Brass	Stainless steel, SUS 316

Ordering Requirements and Dimension

IMC (standard)

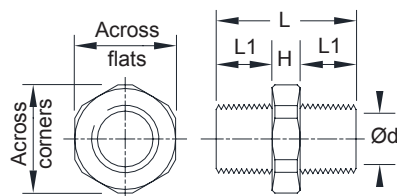
Stainless steel or Brass



Cat. No.	Entries Thread (Male)	Dimension in mm.				
		L	L1	H	Inside Diameter (Ød)	Outside Diameter (ØD)
DNP -N1 -59 I	1/2" NPT	59.70	19.85	20.0	17.12	20.70
DNP -N2 -60 I	3/4" NPT	60.30	20.15	20.0	22.34	26.14
DNP -N3 -70 I	1" NPT	70.00	25.00	20.0	28.45	32.77
DNP -N4 -71 I	1-1/4" NPT	71.22	25.61	20.0	37.27	41.59
DNP -N5 -72 I	1-1/2" NPT	72.08	26.04	20.0	43.23	47.81
DNP -N6 -73 I	2" NPT	73.74	26.87	20.0	55.11	59.93
DNP -N7 -104I	2-1/2" NPT	104.80	39.90	25.0	65.44	72.56
DNP -N8 -107I	3" NPT	107.98	41.49	25.0	81.17	88.29
DNP -N9 -110I	3-1/2" NPT	110.52	42.76	25.0	93.74	100.86
DNP -N10 -113I	4" NPT	113.06	44.03	25.0	106.28	113.40

Cat. No.	Entries Thread (Male)	Dimension in mm.					
		L	L1	H	Inside Diameter (Ød)	Across Corners	Across Flats
DNP -N1 -59 □	1/2" NPT	59.70	19.85	20.0	14.5	24.5	22.00
DNP -N2 -60 □	3/4" NPT	60.30	20.15	20.0	18.0	35.0	31.75
DNP -N3 -70 □	1" NPT	70.00	25.00	20.0	24.0	42.0	38.10
DNP -N4 -71 □	1-1/4" NPT	71.22	25.61	20.0	31.0	49.0	44.40
DNP -N5 -72 □	1-1/2" NPT	72.08	26.04	20.0	37.0	56.0	50.80
DNP -N6 -73 □	2" NPT	73.74	26.87	20.0	49.0	70.0	63.50
DNP -N7 -104 □	2-1/2" NPT	104.80	39.90	25.0	60.0	84.0	76.20
DNP -N8 -107 □	3" NPT	107.98	41.49	25.0	74.0	112.0	101.00
DNP -N9 -110 □	3-1/2" NPT	110.52	42.76	25.0	86.0	126.0	114.00
DNP -N10 -113 □	4" NPT	113.06	44.03	25.0	96.0	134.0	120.00

Stainless steel or Brass (Metric)



Cat. No.	Entries Thread (Male)	Dimension in mm.					
		L	L1	H	Inside Diameter (Ød)	Across Corners	Across Flats
DNP-M1-50 □	M20x1.5	50.0	15.0	20.0	14.5	26.5	24.0
DNP-M2-50 □	M25x1.5	50.0	15.0	20.0	18.0	35.0	31.75
DNP-M3-50 □	M32x1.5	50.0	15.0	20.0	24.0	42.0	38.1
DNP-M4-50 □	M40x1.5	50.0	15.0	20.0	32.0	49.0	44.4
DNP-M5-50 □	M50x1.5	50.0	15.0	20.0	40.0	63.0	57.1
DNP-M6-50 □	M63x1.5	50.0	15.0	20.0	51.0	70.0	77.0