

Cable Fitting: Barrier Cable Gland for Non-Armoured Cable, DNAFB Series

Flameproof/ Increased Safety and Dust protection by enclosure

Zone 1 & 2 – 21 & 22



Application

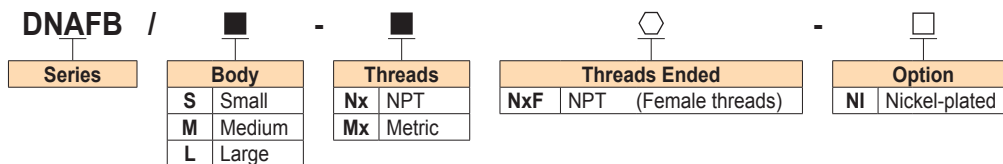
The DNAFB cable glands are suitable for used to insertion of normal non-armoured cable into Ex db or Ex eb equipment or enclosure. The gland nut is provided with female or male threads ended.

Specification

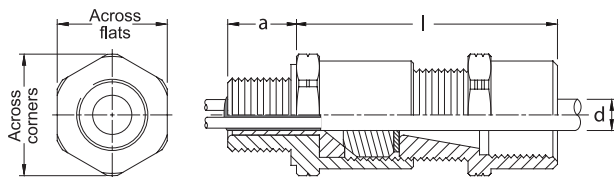
- Body, gland nut : Brass
(optional nickel-plated brass)
- Thread seal : Nylon (PA6)
(for metric threads only)
- Seal : Putty compound, -40°C to +120°C
(2-part; resin/hardener)

Catalogue Number Logic

Female threads gland nut (NPT)



Ordering Requirements



Brass



Nickel-plated brass

Cat. No.	Entries Threads (Male)		Cable Dia. Outer 'd'	Gland Nut (Female, NPT)	Dimension in mm.				Approx. Weight (kgs.)		
	Metric	NPT			l	a	Across Corners	Across Flats			
DNAFB /S -M0 N1F	-	-	M16x1.5	-	3.0-8.6	1/2"	53.2	15.0	26.5	24.0	0.08
DNAFB /S -M1 N1F	-	-	M20x1.5	-			51.8	19.8	26.5	24.0	0.11
DNAFB /S -N1 N1F	-	1/2"	-	-	6.1-11.9	1/2"	54.2	15.0	26.5	24.0	0.10
DNAFB /M -M1 N1F	-	-	M20x1.5	-			52.8	19.8	26.5	24.0	0.10
DNAFB /M -N1 N1F	-	1/2"	-	-	6.5-14.3	1/2"	54.2	15.0	35.0	31.75	0.11
DNAFB /L -M1 N1F	-	-	M20x1.5	-			52.8	19.8	35.0	31.75	0.12
DNAFB /S -M2 N2F	-	-	M25x1.5	-	6.5-14.3	3/4"	54.2	20.1	35.0	31.75	0.17
DNAFB /L -N1 N1F	-	1/2"	-	-			52.8	19.8	35.0	31.75	0.12
DNAFB /S -N2 N2F	-	3/4"	-	-	11.1-20.2	3/4"	55.2	15.0	42.0	38.1	0.23
DNAFB /M -M2 N2F	-	-	M25x1.5	-			54.2	20.1	42.0	38.1	0.25
DNAFB /S -M3 N3F	-	-	M32x1.5	-	11.1-20.2	1"	56.2	25.0	42.0	38.1	0.28
DNAFB /M -N2 N2F	-	3/4"	-	-			57.2	15.0	42.0	38.1	0.23
DNAFB /S -N3 N3F	-	1"	-	-	17.0-26.5	1-1/4"	58.2	15.0	49.0	44.4	0.31
DNAFB /M -M3 N3F	-	-	M32x1.5	-			57.2	25.0	49.0	44.4	0.25
DNAFB /S -M4 N4F	-	-	M40x1.5	-	17.0-26.5	1-1/4"	57.7	25.6	49.0	44.4	0.40
DNAFB /M -N3 N3F	-	1"	-	-			57.2	25.0	49.0	44.4	0.25
DNAFB /S -N4 N4F	-	1-1/4"	-	-	22.0-32.5	1-1/4"	60.2	15.0	56.0	50.8	0.30
DNAFB /M -M4 N4F	-	-	M40x1.5	-			57.7	25.6	49.0	44.4	0.40
DNAFB /S -M5 N5F	-	-	M50x1.5	-	22.0-32.5	1-1/2"	60.2	15.0	56.0	50.8	0.45
DNAFB /M -N4 N4F	-	1-1/4"	-	-			59.2	25.6	56.0	50.8	0.37
DNAFB /S -N5 N5F	-	1-1/2"	-	-	29.5-38.1	1-1/2"	61.2	15.0	63.0	57.1	0.49
DNAFB /M -M5 N5F	-	-	M50x1.5	-			60.2	26.0	63.0	57.1	0.42
DNAFB /S -M6 N6F	-	-	M63x1.5	-	29.5-38.1	1-1/2"	62.2	15.0	70.0	63.5	0.48
DNAFB /M -N5 N5F	-	1-1/2"	-	-			62.7	15.0	77.0	70.0	0.72
DNAFB /L -M5 N5F	-	-	M50x1.5	-	35.6-44.0	1-1/2"	61.2	26.0	70.0	63.5	0.60
DNAFB /S -N6 N6F	-	2"	-	-			61.7	26.9	77.0	70.0	0.80
DNAFB /M -M6S N6F	-	-	M63x1.5	-	39.0-44.0	2"	62.7	15.0	84.0	76.2	0.63
DNAFB /S -M7S N7F	-	-	M75x1.5	-			68.7	15.0	99.0	88.9	1.00
DNAFB /M -N6S N6F	-	2"	-	-	39.0-44.0	2"	62.7	26.9	84.0	76.2	0.84
DNAFB /S -N7S N7F	-	2-1/2"	-	-			68.7	39.9	99.0	88.9	1.56
DNAFB /M -M6L N6F	-	-	M63x1.5	-	44.1-54.0	2"	62.7	15.0	84.0	76.2	0.63
DNAFB /S -M7L N7F	-	-	M75x1.5	-			68.7	15.0	99.0	88.9	1.00
DNAFB /M -N6L N6F	-	2"	-	-	44.1-54.0	2-1/2"	62.7	26.9	84.0	76.2	0.84
DNAFB /S -N7L N7F	-	2-1/2"	-	-			68.7	39.9	99.0	88.9	1.56





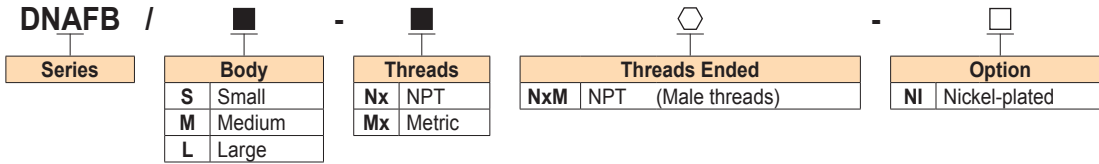
Cable Fitting: Barrier Cable Gland for Non-Armoured Cable, DNAFB Series

Flameproof/ Increased Safety and Dust protection by enclosure

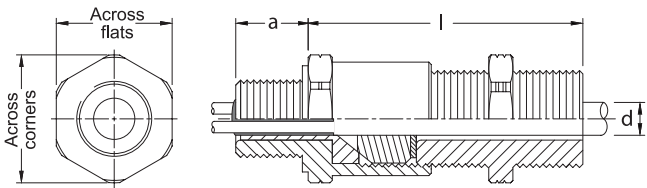
Zone 1 & 2 – 21 & 22

Catalogue Number Logic

Male threads gland nut (NPT)



Ordering Requirements



Brass



Nickel-plated brass

Cat. No.	Entries Threads (Male)		Cable Dia. Outer 'd'	Gland Nut (Male, NPT)	Dimension in mm.				Approx. Weight (kgs.)
	Metric	NPT			l	a	Across Corners	Across Flats	
DNAFB /S -M0 N1M -□	M16x1.5	-	3.0-8.6	1/2"	58.6	15.0	26.5	24.0	0.08
DNAFB /S -M1 N1M -□	M20x1.5	-							0.10
DNAFB /S -N1 N1M -□	-	1/2"							0.11
DNAFB /M -M1 N1M -□	M20x1.5	-	6.1-11.9	1/2"	59.6	15.0	26.5	24.0	0.10
DNAFB /M -N1 N1M -□	-	1/2"							0.10
DNAFB /L -M1 N1M -□	M20x1.5	-	6.5-14.3	1/2"	59.6	15.0	35.0	31.75	0.11
DNAFB /S -M2 N2M -□	M25x1.5	-							0.16
DNAFB /L -N1 N1M -□	-	1/2"							0.12
DNAFB /S -N2 N2M -□	-	3/4"							0.17
DNAFB /M -M2 N2M -□	M25x1.5	-	11.1-20.2	3/4"	60.9	15.0	42.0	38.1	0.17
DNAFB /S -M3 N3M -□	M32x1.5	-							0.23
DNAFB /M -N2 N2M -□	-	3/4"							0.25
DNAFB /S -N3 N3M -□	-	1"	17.0-26.5	1"	64.7	25.0	42.0	38.1	0.28
DNAFB /M -M3 N3M -□	M32x1.5	-							0.23
DNAFB /S -M4 N4M -□	M40x1.5	-							0.31
DNAFB /M -N3 N3M -□	-	1"							0.25
DNAFB /S -N4 N4M -□	-	1-1/4"	22.0-32.5	1-1/4"	66.3	25.6	49.0	44.4	0.40
DNAFB /M -M4 N4M -□	M40x1.5	-							0.30
DNAFB /S -M5 N5M -□	M50x1.5	-							0.45
DNAFB /M -N4 N4M -□	-	1-1/4"	29.5-38.1	1-1/4"	68.3	25.6	56.0	50.8	0.37
DNAFB /S -N5 N5M -□	-	1-1/2"							0.49
DNAFB /M -M5 N5M -□	M50x1.5	-	35.6-44.0	1-1/2"	70.7	15.0	63.0	57.1	0.42
DNAFB /M -N5 N5M -□	-	1-1/2"							0.46
DNAFB /L -M5 N5M -□	M50x1.5	-							0.48
DNAFB /S -M6 N6M -□	M63x1.5	-	39.0-44.0	2"	73.6	15.0	77.0	70.0	0.72
DNAFB /L -N5 N5M -□	-	1-1/2"							0.60
DNAFB /S -N6 N6M -□	-	2"							0.80
DNAFB /M -M6S N6M -□	M63x1.5	-							0.63
DNAFB /S -M7S N7M -□	M75x1.5	-	44.1-54.0	2-1/2"	86.6	15.0	99.0	88.9	1.00
DNAFB /M -N6S N6M -□	-	2"							0.84
DNAFB /S -N7S N7M -□	-	2-1/2"							1.56
DNAFB /M -M6L N6M -□	M63x1.5	-							0.63
DNAFB /S -M7L N7M -□	M75x1.5	-	44.1-54.0	2-1/2"	86.6	15.0	99.0	88.9	1.00
DNAFB /M -N6L N6M -□	-	2"							0.84
DNAFB /S -N7L N7M -□	-	2-1/2"	1.56						

Thread seal



Body (Entry thread)



Compound tube



Neoprene inner sealing ring



Sealing washer



Gland nut Male Threads ended

Cable Fitting: Barrier Cable Gland for Non-Armoured Cable, DNAFB Series

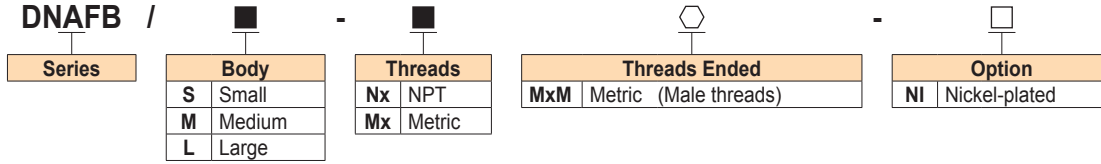
Flameproof/ Increased Safety and Dust protection by enclosure

Zone 1 & 2 – 21 & 22

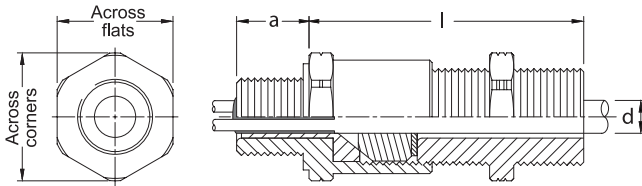


Catalogue Number Logic

Male threads gland nut (Metric)



Ordering Requirements



Brass



Nickel-plated brass

Cat. No.	Entries Threads (Male)		Cable Dia. Outer 'd'	Gland Nut (Male, Metric)	Dimension in mm.				Approx. Weight (kgs.)
	Metric	NPT			l	a	Across Corners	Across Flats	
DNAFB /S -M0 M1M -□	M16x1.5	-	3.0-8.6	M20x1.5	53.7	15.0	26.5	24.0	0.08
DNAFB /S -M1 M1M -□	M20x1.5	-			52.3	19.8	26.5	24.0	0.10
DNAFB /S -N1 M1M -□	-	1/2"	6.1-11.9	M20x1.5	54.7	15.0	26.5	24.0	0.10
DNAFB /M -M1 M1M -□	M20x1.5	-			53.3	19.8	26.5	24.0	0.10
DNAFB /L -M1 M1M -□	M20x1.5	-	6.5-14.3	M20x1.5	54.7	15.0	35.0	31.75	0.11
DNAFB /S -M2 M2M -□	M25x1.5	-			53.8	19.8	35.0	31.75	0.12
DNAFB /L -N1 M1M -□	-	1/2"	11.1-20.2	M25x1.5	53.2	20.1	35.0	31.75	0.17
DNAFB /S -N2 M2M -□	-	3/4"			55.7	15.0	42.0	38.1	0.17
DNAFB /M -M2 M2M -□	M25x1.5	-	17.0-26.5	M32x1.5	54.7	20.1	42.0	38.1	0.23
DNAFB /S -M3 M3M -□	M32x1.5	-			56.7	15.0	49.0	44.4	0.23
DNAFB /M -N1 M1M -□	M20x1.5	1/2"	22.0-32.5	M40x1.5	54.7	25.0	49.0	44.4	0.25
DNAFB /S -N2 M2M -□	-	3/4"			55.7	25.0	49.0	44.4	0.25
DNAFB /M -N3 M3M -□	M32x1.5	1"	29.5-38.1	M50x1.5	57.7	25.6	56.0	50.8	0.30
DNAFB /S -M4 M4M -□	M40x1.5	-			59.7	15.0	63.0	57.1	0.37
DNAFB /M -M4 M4M -□	M40x1.5	-	35.6-44.0	M50x1.5	57.7	26.0	63.0	57.1	0.49
DNAFB /S -N4 M4M -□	-	1-1/4"			58.7	26.0	63.0	57.1	0.46
DNAFB /M -N4 M4M -□	M40x1.5	-	39.0-44.0	M50x1.5	59.7	15.0	70.0	63.5	0.42
DNAFB /S -N5 M5M -□	M50x1.5	-			61.7	15.0	77.0	70.0	0.48
DNAFB /M -M5 M5M -□	M50x1.5	-	44.1-54.0	M63x1.5	60.7	26.0	70.0	63.5	0.60
DNAFB /S -N6 M6M -□	-	1-1/2"			60.7	26.9	77.0	70.0	0.60
DNAFB /M -M6 M6M -□	M63x1.5	-	39.0-44.0	M63x1.5	61.7	15.0	84.0	76.2	0.84
DNAFB /S -N7S M7M -□	M75x1.5	-			61.7	15.0	99.0	88.9	1.00
DNAFB /M -N6L M6M -□	M63x1.5	2"	44.1-54.0	M75x1.5	61.7	26.9	84.0	76.2	0.84
DNAFB /S -N7L M7M -□	-	2-1/2"			61.7	26.9	84.0	76.2	0.84
DNAFB /M -M6L M6M -□	M63x1.5	-	44.1-54.0	M75x1.5	61.7	15.0	84.0	76.2	0.63
DNAFB /S -N7L M7M -□	-	2"			61.7	26.9	84.0	76.2	0.84
DNAFB /M -N6L M6M -□	M63x1.5	-	44.1-54.0	M75x1.5	61.7	15.0	84.0	76.2	1.00
DNAFB /S -N7L M7M -□	-	2-1/2"			61.7	26.9	84.0	76.2	1.56

