

Lighting: Emergency Light, DMG1 Series

Flameproof and Dust protection by enclosure

Zone 1 & 2 – 21 & 22



Application

The DMG1 series can be used in petroleum mining, oil refining, chemical industry, military industry and other dangerous environment.

In case of power failure emergency lights will automatically illuminate.

Specification

- Body material : Marine grade copper-free aluminium alloy with polyester powder coated, RAL 7032 (grey)
(optional offshore painting-acrylic polyurethane coating)
- Bolts : Stainless steel, SUS 304
(optional SUS 316)
- Sealing (O-ring) : Silicone

LED System

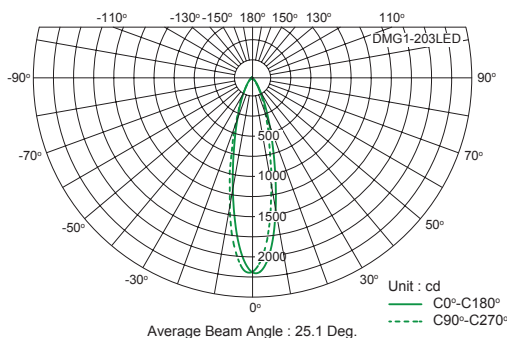
- Luminous efficient : 100 lm/W
- Colour temperature : Standard 5700 K (daylight)
- Color Rendering Index (Ra) : ≥ 70
(optional $Ra \geq 80$)
- Chip : Cree 3535
- Beam angle : Average 25°

Electrical for Emergency unit

- Operation : Non-maintained mode
- Battery : Ni-MH, 7.2V., 2x 2.5Ah.
- Recharge time : 16-24 hours,
continuous battery recharge
- Emergency starting time : ≤ 0.5 Sec.
- Emergency duration : 180Min. (3-Hours)



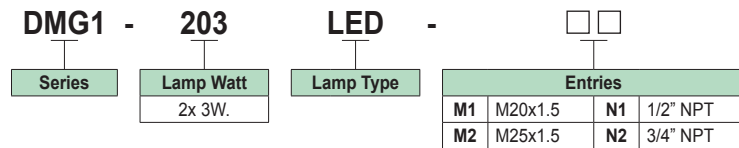
Luminous Intensity Distribution Curve



Technical Data

Hazardous Area	Gas	Dust
Zones	1 & 2	21 & 22
Equipment Group/Category	Ex II 2G	Ex II 2D
Symbol of Protection	Ex db IIC T6 Gb	Ex tb IIIC T85°C Db
Certificate No.	KDB 21 ATEX 0033X IECEx KDB 21.0005X	
Conformity to standards	EN IEC 60079-0:2018, EN 60079-1:2014, EN 60079-31:2014 IEC 60079-0:2017, IEC 60079-1:2014, IEC 60079-31:2013	
Ambient Temperature	-20°C to +60°C	
Index of Protection	IP66	
Entries	M20x1.5, M25x1.5, 1/2" NPT or 3/4" NPT at right and left side	
Mounting	Wall mounting	
Connection	L, N and PE ; for 1-4mm. ² cable (Through wiring system with an extra terminal block for cable connection at both ends.)	
Rated Voltage	220-240V.ac $\pm 5\%$ 50/60Hz.	

Catalogue Number Logic

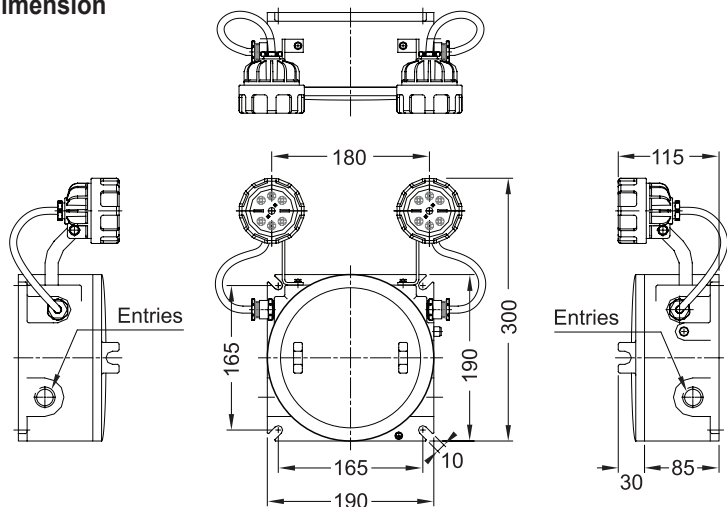


Ordering Requirements

Cat. No.	Lamp Watt	Lumen Output	Temp. Class (for zone 1 & 2)		Max. Surface Temp.* (for zone 21 & 22)		Approx. Weight (kgs.)
			Ta 40 °C	Ta 60 °C	Ta 40 °C	Ta 60 °C	
DMG1-203LED-□□	2x 3W.	600 lm	T6	T6	T85°C	T85°C	5.5

Remark * : The maximum surface temperatures are specified for dust free condition. The dust layer which may cover around the lighting fixture will cause to higher surface temperature.

Dimension



INSPECTION AND MAINTENANCE SCHEDULE (EIT Standard 021004-22)	First installation	Routine Test	
		Every months (function)	Every year
Discharge Duration	≥ 120 minutes	≥ 30 seconds	≥ 120 minutes