

Signal and Alarm: Warning Light (Signal Light), DLF1-BN, DLF1-OB, DLF1-WN Series

Flameproof/ Increased Safety and Dust protection by enclosure

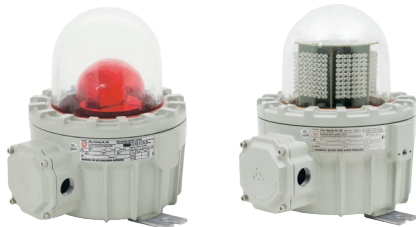
Zone 1 & 2 – 21 & 22

Application

The warning light are showing the working status of machines or equipment production process etc.

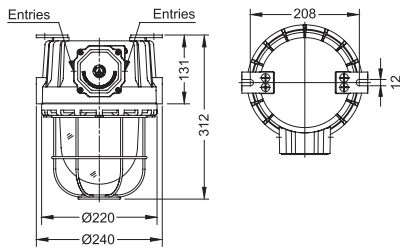
Specification

- Body material : Marine grade copper-free aluminium alloy with polyester powder coated, RAL 7032 (grey)
(optional offshore painting- acrylic polyurethane coating)
- Globe : Borosilicate glass
- Filter : Plastic (Warning Light)
- Guard, bolts : Stainless steel, SUS 304 (optional SUS 316)
- Sealing (O-ring) : Silicone
- Bracket : Hot-dip galvanized steel (optional SUS 304 or SUS 316)

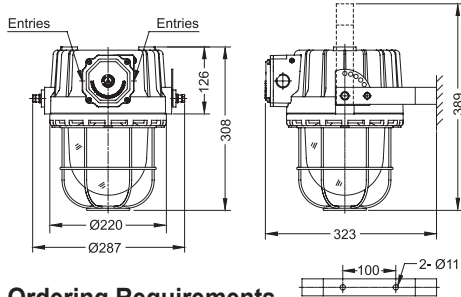


Dimension

Ceiling mount



Bracket mount



Technical Data

Hazardous Area	Gas	Dust
Zones	1 & 2	21 & 22
Equipment Group/Category	Ex II 2G	Ex II 2D
Symbol of Protection	Ex db eb IIC T6/ T5 Gb	Ex tb IIIC T80°C/ T100°C Db
Certificate No.	TÜV CY 18 ATEX 0206011X	
Conformity to Standards	EN IEC 60079-0:2018, EN 60079-1:2014, EN IEC 60079-7:2015/ A1:2018, EN 60079-31:2014	
Ambient Temperature	-20°C to +55°C	
Index of Protection	IP66	
Entries	2- M20x1.5, 2- M25x1.5 or 2- 1/2" NPT, 2- 3/4" NPT (1-stopping plug)	
Mounting	Ceiling or Bracket mounting (standard) (Optional mounting ; 2- M10 eye bolts, clamps for pipe)	
Connection	L, N and PE ; for 1-4mm. ² cable (Through wiring system with an extra terminal block for cable connection at both ends.)	
Rated Voltage	220/ 230/ 240V.ac ±5% 50/60Hz.	

Catalogue Number Logic

Warning Light (Rotating)

DLF1 - BN - ■ ■ △ △ ○ ○ - □

Series	Type	Voltage	Lens Colour	Accessories	Mounting	Entries
1D	12V.dc	R	Red	G Basket guard	C Ceiling	M1 M20x1.5
2D	24V.dc	Y	Yellow	B Bracket	M2 M25x1.5	N1 1/2" NPT
22	220V.ac 50Hz.	G	Green		N2 3/4" NPT	
		B	Blue			

Warning Light (LED lamp with lens colour)

DLF1 - WN - ■ ■ 22 △ △ ○ ○ - □

Series	Type	Lamp Watts	Voltage	Lens Colour	Accessories	Mounting	Entries
06	6W.	22	220V.ac 50Hz.	R Red	G Basket guard	C Ceiling	M1 M20x1.5
07	7W.			Y Yellow	B Bracket	M2 M25x1.5	N1 1/2" NPT
09	9W.			G Green		N2 3/4" NPT	
10	10W.			B Blue			

Low Intensity ICAO Obstruction Lights (Red LED)

DLF1 - OB - 24 R △ △ ○ ○ - □

Series	Type	Voltage	Lens Colour	Accessories	Mounting	Entries
24	110-240V.ac 50/60Hz.	R	Red	G Basket guard	C Ceiling	M1 M20x1.5
					B Bracket	M2 M25x1.5
						N1 1/2" NPT
						N2 3/4" NPT

Ordering Requirements

Cat. No.	Voltage	Power Consumption	Rotating Flash Rate	Temp. Class (for zone 1 & 2)		Max. Surface Temp.* (for zone 21 & 22)	
				Ta 40 °C	Ta 55 °C	Ta 40 °C	Ta 55 °C
Warning Light (Rotating) ● ● ● ●							
DLF1-BN-1D	△ ○ ○ - □	12V.dc	120 rpm	T6	T5	T80°C	T100°C
DLF1-BN-2D	△ ○ ○ - □	24V.dc		3.4W.			
DLF1-BN-22	△ ○ ○ - □	220V.ac 50Hz.		3.0W.			
Warning Light (LED lamp with lens colour) ● ● ● ●							
DLF1-WN-0622	△ ○ ○ - □	220V.ac 50Hz.	-	T6	T5	T80°C	T100°C
DLF1-WN-0722	△ ○ ○ - □	7W.					
DLF1-WN-0922	△ ○ ○ - □	9W.					
DLF1-WN-1022	△ ○ ○ - □	10W.					
Low Intensity ●							
DLF1-OB-24R	○ ○ - □	110-240V.ac 50/60Hz.	-	T6	T5	T80°C	T100°C

Remark * : The maximum surface temperatures are specified for dust free condition. The dust layer which may cover around the lighting fixture will cause to higher surface temperature.

Wiring Diagram

