

Cable Fittings: Barrier Cable Gland for Armoured Cable, DACB Series

Flameproof/ Increased Safety and Dust protection by enclosure

Zone 1 & 2 – 21 & 22



Application

The DACB cable glands are suitable for direct insertion of SWA (Steel Wire Armoured) cables into Ex db or Ex eb equipment or enclosures.

Specification

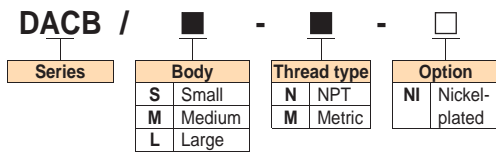
Body, gland nut : Brass
 (optional nickel-plated brass)
 Thread seal : Nylon (PA6)
 (for metric threads only)
 Seal : Putty compound, -40°C to +120°C
 (2-part; resin/hardener)

Technical Data

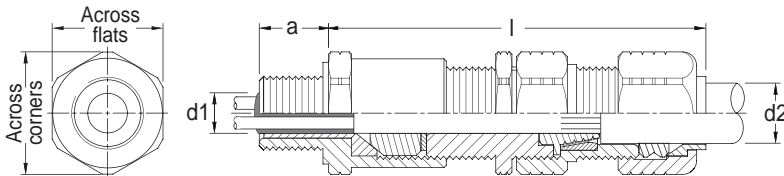
Hazardous Area Zones	Gas	Dust
	1 & 2	21 & 22
Equipment Group/Category	Ex II 2G	Ex II 2D
Symbol of Protection	Ex db IIC Gb / Ex eb IIC Gb	Ex tb IIC Db
Certificate	KDB 26 ATEX 0019X IECEX KDB 26.0002X	
T Rating	Temperature class of enclosure to which will be connected.	
Conformity to Standards	EN IEC 60079-0, EN 60079-1, EN IEC 60079-7, EN 60079-31 IEC 60079-0, IEC 60079-1, IEC 60079-7, IEC 60079-31	
Ambeint Temperature	-40°C to +75°C	
Index of Protection	IP66	

Note: Cables for fixed installations shall have flame propagation characteristics that enable them to withstand the tests according to IEC 60332-1-2 or IEC 60332-3-22.

Catalogue Number Logic



Ordering Requirements



Cat. No.	Entry threads (Male)		Cable diameter		Armour wire dia.	Dimensions in mm				Approx. weight (kg)	Shroud Ref.
	Metric	NPT	Inner 'd1'	Outer 'd2'		l	a	Across corners	Across flats		
DACB/S -M0	M16x1.5	-	3.0-8.3	7.7-12.8	0.9	65.0	15.0	26.5	24.0	0.13	SPV-24
DACB/S -M1	M20x1.5	-									
DACB/S -N1	-	1/2"	6.1-11.3	10.0-14.0	0.9/1.25	65.0	19.8	26.5	24.0	0.14	SPV-24
DACB/M -M1	M20x1.5	-									
DACB/M -N1	-	1/2"	6.5-14.0	13.1-19.8	0.9/1.25	73.0	15.0	35.0	31.75	0.20	SPV-31
DACB/L -M1	M20x1.5	-									
DACB/L -M2	M25x1.5	-	11.1-19.8	17.1-25.8	1.25/1.6	81.0	15.0	42.0	38.1	0.37	SPV-38
DACB/L -N1	-	1/2"									
DACB/S -N2	-	3/4"	17.0-26.3	21.7-30.8	1.6/2.0	92.0	15.0	49.0	44.4	0.60	SPV-44
DACB/M -M2	M25x1.5	-									
DACB/M -N2	-	3/4"	22.0-32.3	26.4-35.8	1.6/2.0	96.0	15.0	56.0	50.8	0.80	SPV-50
DACB/S -N3	-	1"									
DACB/M -M3	M32x1.5	-	29.5-37.8	37.0-43.3	1.8/2.5	98.0	15.0	63.0	57.1	0.90	SPV-57
DACB/S -M4	M40x1.5	-									
DACB/S -N4	-	1-1/4"	35.6-43.8	37.1-47.3	1.8/2.5	98.0	15.0	70.0	63.5	1.00	SPV-63
DACB/M -M4	M40x1.5	-									
DACB/S -N5	-	1-1/2"	39.0-44.3	48.2-54.8	1.8/2.5	99.0	15.0	84.0	76.2	1.35	SPV-76
DACB/M -M5	M50x1.5	-									
DACB/S -N6	-	2"	44.1-52.3	57.5-63.8	1.8/2.5	99.0	15.0	84.0	76.2	1.35	SPV-76
DACB/M -M6	M63x1.5	-									
DACB/S -N7	-	2-1/2"				99.0	26.9	84.0	76.2		
DACB/M -M7S	M75x1.5	-				99.0	26.9	84.0	76.2		
DACB/S -N6L	-	2"				99.0	26.9	84.0	76.2		
DACB/M -M6L	M63x1.5	-				99.0	39.9	84.0	76.2		
DACB/S -M7L	M75x1.5	-				99.0	39.9	84.0	76.2		
DACB/M -N6L	-	2"				99.0	39.9	84.0	76.2		
DACB/S -N7L	-	2-1/2"				99.0	39.9	84.0	76.2		

