



# Cable Fittings: Cable Gland for Non-Armoured Cable, DNAF Series (Female threads ended)

Flameproof/ Increased Safety and Dust protection by enclosure

Zone 1 & 2 – 21 & 22

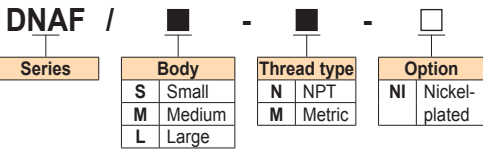
## Application

The DNAF cable glands are suitable for use in Zone 1, Zone 2, and Zone 21, Zone 22 hazardous areas, allowing direct insertion of normal non-armoured cables into Ex d equipment or enclosures. The gland nut is provided with female thread ends.

## Specification

Body, gland nut : Brass  
(optional nickel-plated brass)  
Thread seal : Nylon (PA6)  
(for metric threads only)

## Catalogue Number Logic

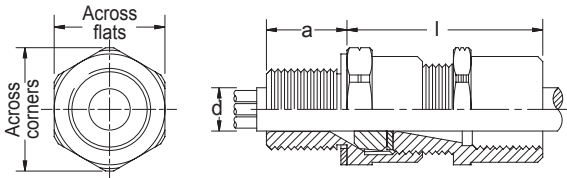


## Technical Data

<b>Hazardous Area</b>	<b>Gas</b>	<b>Dust</b>
<b>Zones</b>	<b>1 &amp; 2</b>	<b>21 &amp; 22</b>
<b>Equipment Group/Category</b>	<b>Ex II 2G</b>	<b>Ex II 2D</b>
<b>Symbol of Protection</b>	<b>Ex db eb IIC Gb</b>	<b>Ex tb IIIC Db</b>
<b>Certificate</b>	<b>TÜV CY 18 ATEX 0206101X</b>	
<b>T Rating</b>	Temperature class of enclosure to which will be connected.	
<b>Conformity to Standards</b>	EN IEC 60079-0, EN 60079-1, EN IEC 60079-7, EN IEC 60079-31	
<b>Ambient Temperature</b>	-20°C to +75°C	
<b>Index of Protection</b>	IP66	

Note: Cables for fixed installations shall have flame propagation characteristics that enable them to withstand the tests according to IEC 60332-1-2 or IEC 60332-3-22.

## Ordering Requirements



Brass



Nickel-plated brass

Cat. No.	Entry threads (Male)		Cable dia. outer 'd'	Threads ended (Female)	Dimensions in mm				Approx. weight (kg)
	Metric	NPT			Min - Max	NPT	l	a	
DNAF /S -M0N1	- □	M16x1.5	-						0.08
DNAF /S -M1N1	- □	M20x1.5	-						0.10
DNAF /S -N1	- □	-	1/2"		38.5	15.0	26.5	24.0	0.11
DNAF /M -M1N1	- □	M20x1.5	-	1/2"	41.5	19.8	26.5	24.0	0.10
DNAF /M -N1	- □	-	1/2"		38.5	15.0	26.5	24.0	0.10
DNAF /L -M1N1	- □	M20x1.5	-	1/2"	41.5	19.8	26.5	24.0	0.11
DNAF /S -M2N2	- □	M25x1.5	-	3/4"	39.5	15.0	35.0	31.75	0.16
DNAF /L -N1	- □	-	1/2"		42.5	19.8	35.0	31.75	0.12
DNAF /S -N2	- □	-	3/4"		42.5	20.1	35.0	31.75	0.17
DNAF /M -M2N2	- □	M25x1.5	-	3/4"	46.5	15.0	42.0	38.1	0.17
DNAF /S -M3N3	- □	M32x1.5	-	1"	49.5	20.1	42.0	38.1	0.23
DNAF /M -N2	- □	-	3/4"		54.5	25.0	42.0	38.1	0.25
DNAF /S -N3	- □	-	1"		47.5	15.0	49.0	44.4	0.28
DNAF /M -M3N3	- □	M32x1.5	-	1"	55.5	25.0	49.0	44.4	0.23
DNAF /S -M4N4	- □	M40x1.5	-	1-1/4"	55.5	25.6	49.0	44.4	0.31
DNAF /M -N3	- □	-	1"		51.0	15.0	56.0	50.8	0.25
DNAF /S -N4	- □	-	1-1/4"		51.0	15.0	63.0	57.1	0.30
DNAF /M -M4N4	- □	M40x1.5	-	1-1/4"	59.0	25.6	56.0	50.8	0.37
DNAF /S -M5N5	- □	M50x1.5	-	1-1/2"	59.0	26.0	63.0	57.1	0.49
DNAF /M -N4	- □	-	1-1/4"		51.0	15.0	63.0	57.1	0.42
DNAF /S -N5	- □	-	1-1/2"		59.0	26.0	63.0	57.1	0.46
DNAF /M -M5N5	- □	M50x1.5	-	1-1/2"	51.0	15.0	70.0	63.5	0.48
DNAF /M -N5	- □	-	1-1/2"		52.0	15.0	77.0	70.0	0.42
DNAF /L -M5N5	- □	M50x1.5	-	1-1/2"	60.0	26.0	70.0	63.5	0.60
DNAF /S -M6N6	- □	M63x1.5	-	2"	60.0	26.9	77.0	70.0	0.80
DNAF /L -N5	- □	-	1-1/2"		52.0	15.0	84.0	76.2	0.63
DNAF /S -N6	- □	-	2"		52.0	15.0	99.0	88.9	1.00
DNAF /M -M6N6S	- □	M63x1.5	-	2"	60.0	26.9	84.0	76.2	0.84
DNAF /S -M7N7S	- □	M75x1.5	-	2-1/2"	72.0	39.9	99.0	88.9	1.56
DNAF /M -N6S	- □	-	2"		52.0	15.0	84.0	76.2	0.63
DNAF /S -N7S	- □	-	2-1/2"		52.0	15.0	99.0	88.9	1.00
DNAF /M -M6N6L	- □	M63x1.5	-	2"	60.0	26.9	84.0	76.2	0.84
DNAF /S -M7N7L	- □	M75x1.5	-	2-1/2"	72.0	39.9	99.0	88.9	1.56
DNAF /M -N6L	- □	-	2"		52.0	15.0	84.0	76.2	0.63
DNAF /S -N7L	- □	-	2-1/2"		60.0	26.9	84.0	76.2	0.84

Thread seal



Body (Entry threads)



Neoprene inner sealing ring

Sealing washer



Gland nut Female Threads ended