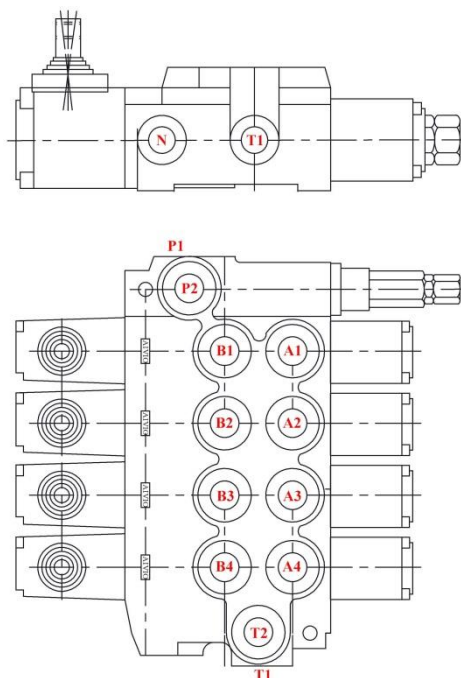


**4000-40**  
**DP40**



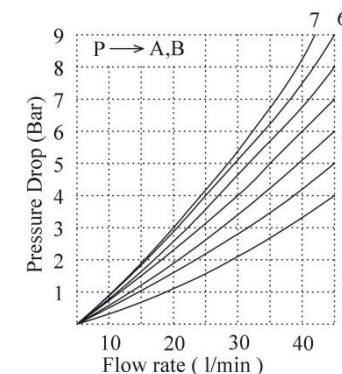
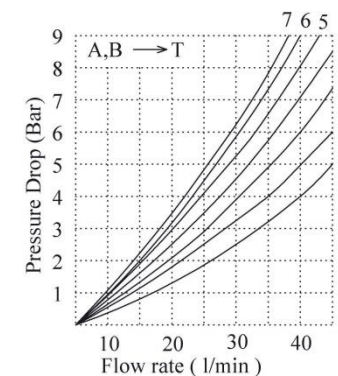
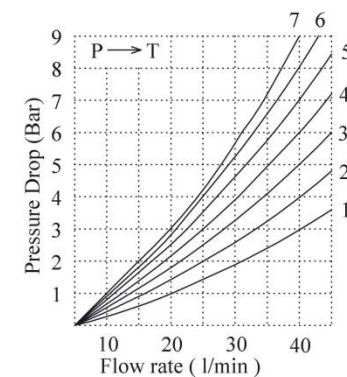
### Specifications:

1. Valve mono-block
2. Mounting: 2 bolts M8
3. Fluid medium: mineral oil based
4. Viscosity: 12~800mm<sup>2</sup>/s permissible range
5. Working temperature: -15°C~+80°C
6. Filtration: Oil contamination 10 to NAS1638
7. Max. operating pressure: P=250 bar  
T=50 bar  
A, B=300 bar
8. Internal leakage: 5cm<sup>3</sup>/min @ 100 bar
9. Nominal flow: 30 to 40l/min
10. Spool stroke: ±6mm
11. Actuating force: <200N in spool axis direction

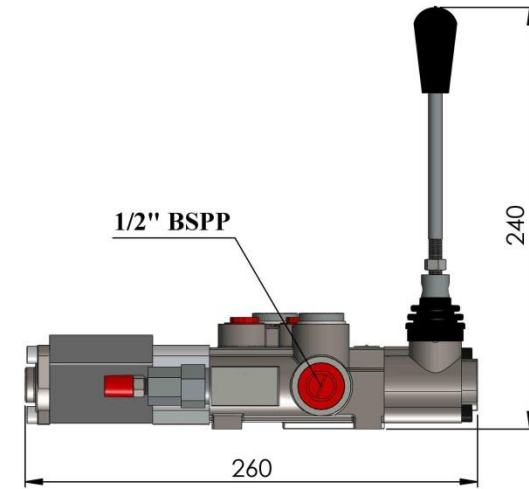
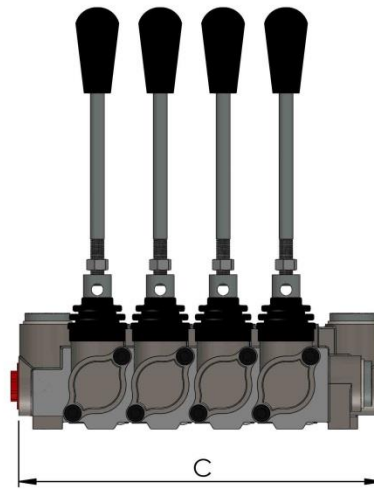
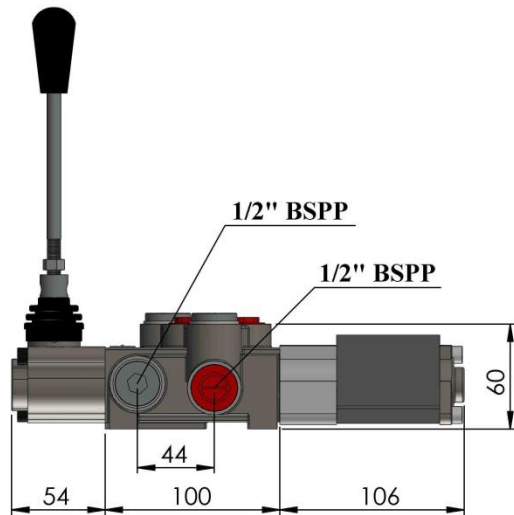
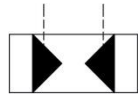
### Description:

For starting, controlling and stopping the working fluid between the generator of pressured flow, the consumers and the tank.

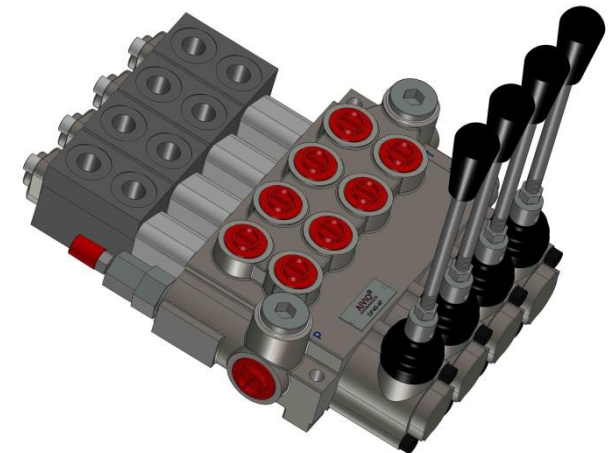
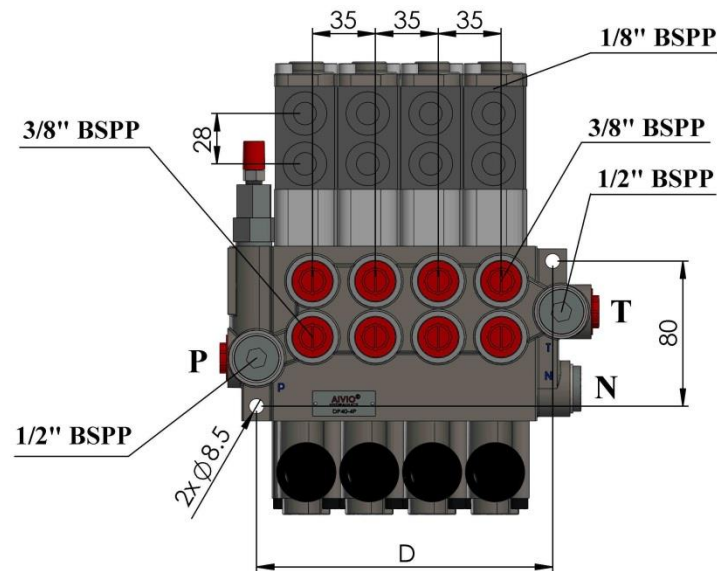
TYPE	Max. flow l/min	Max. Pressure (bar)	P1 (BSPP)	P2 (BSPP)	T1/N (BSPP)	T2 (BSPP)	A (BSPP)	B (BSPP)	~ Weight KGS
DP40/1P-*	40	250	1/2"	<b>NO</b>	1/2"	<b>NO</b>	3/8"	3/8"	2.40
DP40/2P-*	40	250	1/2"	1/2"	1/2"	1/2"	3/8"	3/8"	4.20
DP40/3P-*	40	250	1/2"	1/2"	1/2"	1/2"	3/8"	3/8"	6.00
DP40/4P-*	40	250	1/2"	1/2"	1/2"	1/2"	3/8"	3/8"	7.65
DP40/5P-*	40	250	1/2"	1/2"	1/2"	1/2"	3/8"	3/8"	8.80
DP40/6P-*	40	250	1/2"	1/2"	1/2"	1/2"	3/8"	3/8"	9.50
DP40/7P-*	40	250	1/2"	1/2"	1/2"	1/2"	3/8"	3/8"	10.90



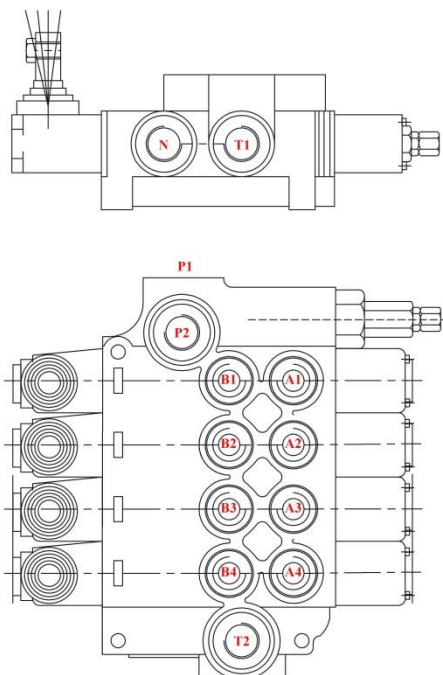
### Hydraulic Control 8H



DESCRIPTION	C (mm)	D (mm)
DP40/1P	85	60
DP40/2P	129	97
DP40/3P	164	132
DP40/4P	199	167
DP40/5P	234	202
DP40/6P	269	237
DP40/7P	304	272

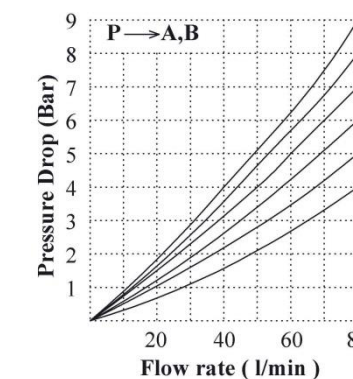
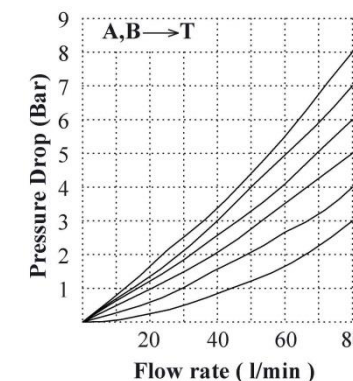
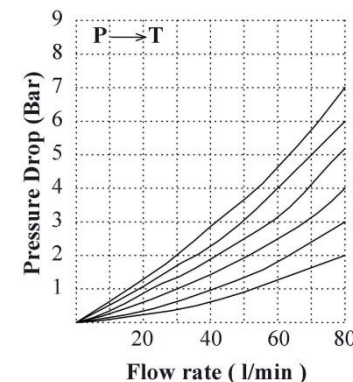


**4010-40**  
**DP80**



### Specifications:

1. Valve mono-block
2. Mounting: 3 bolts M8
3. Fluid medium: mineral oil based
4. Viscosity: 12~800mm<sup>2</sup>/s permissible range
5. Working temperature: -15°C~+80°C
6. Filtration: Oil contamination 10 to NAS1638
7. Max. operating pressure: P=250 bar  
T=50 bar  
A, B=300 bar
8. Internal leakage: 6cm<sup>3</sup>/min @ 100 bar
9. Nominal flow: 60 to 75l/min
10. Spool stroke: ±7mm
11. Actuating force: <220N in spool axis direction.

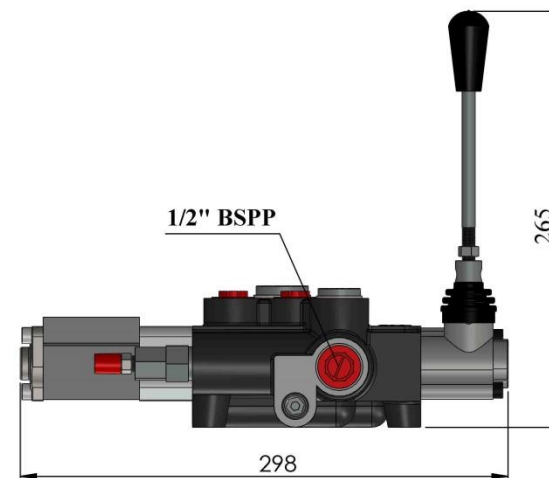
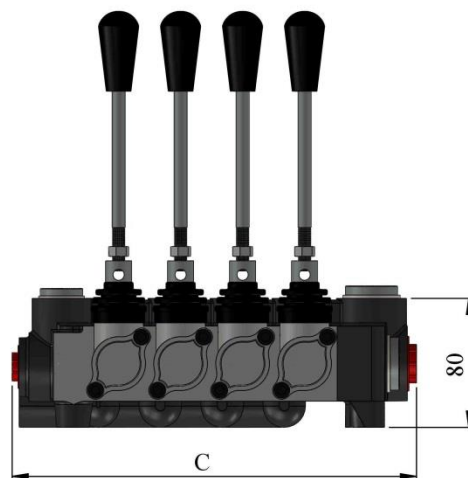
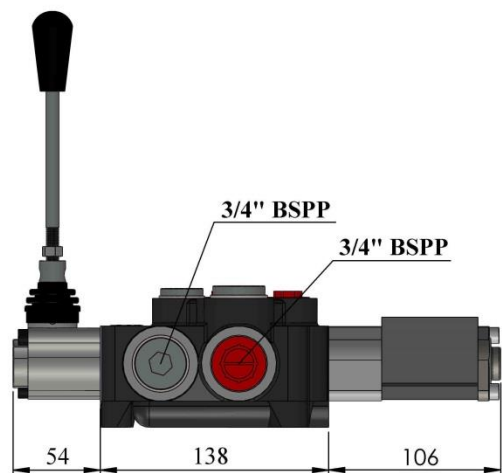
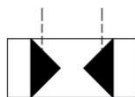


### Description:

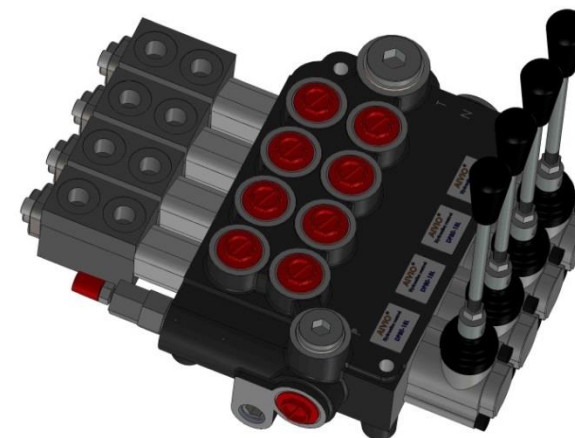
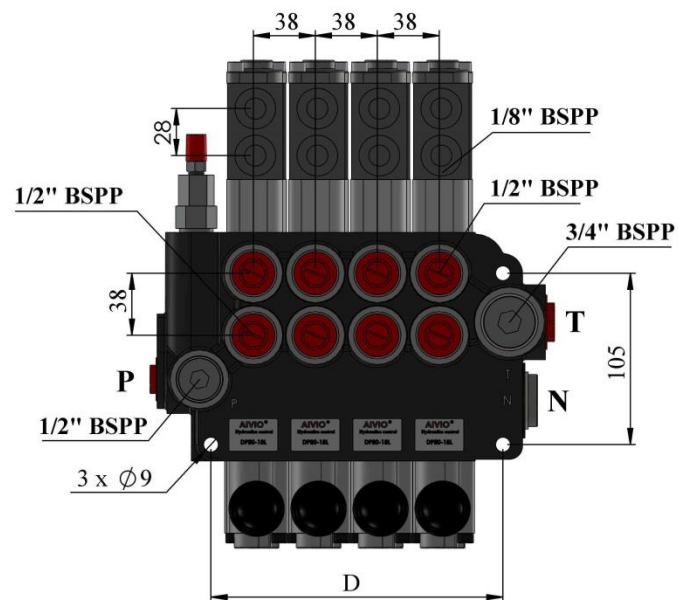
For starting, controlling and stopping the working fluid between the generator of pressured flow, the consumers and the tank.

TYPE	Max. flow l/min	Max. Pressure (bar)	P1 (BSPP)	P2 (BSPP)	T1/N (BSPP)	T2 (BSPP)	A (BSPP)	B (BSPP)	Net. Wt Approx.
DP80/1P-*	75	250	1/2"	<b>NO</b>	3/4"	<b>NO</b>	1/2"	1/2"	3.50
DP80/2P-*	75	250	1/2"	1/2"	3/4"	3/4"	1/2"	1/2"	7.40
DP80/3P-*	75	250	1/2"	1/2"	3/4"	3/4"	1/2"	1/2"	9.70
DP80/4P-*	75	250	1/2"	1/2"	3/4"	3/4"	1/2"	1/2"	12.0
DP80/5P-*	75	250	1/2"	1/2"	3/4"	3/4"	1/2"	1/2"	14.3
DP80/6P-*	75	250	1/2"	1/2"	3/4"	3/4"	1/2"	1/2"	16.5

### Hydraulic Control 8H



DESCRIPTION	C (mm)	D (mm)
DP80/1P	107	65
DP80/2P	160	103
DP80/3P	198	141
DP80/4P	236	179
DP80/5P	274	217
DP80/6P	312	255



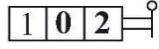
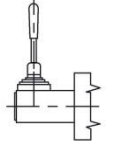
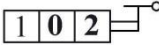
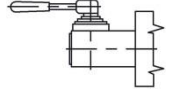
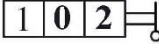
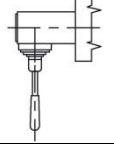
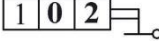
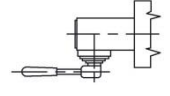
### SPOOL CONTROL 3

CODE	CONTROL SCHEME	CODE	CONTROL SCHEME
A		M	
B		N	
C		O	
D		P	
E		Q	
F		R	
G		S	
H		T	

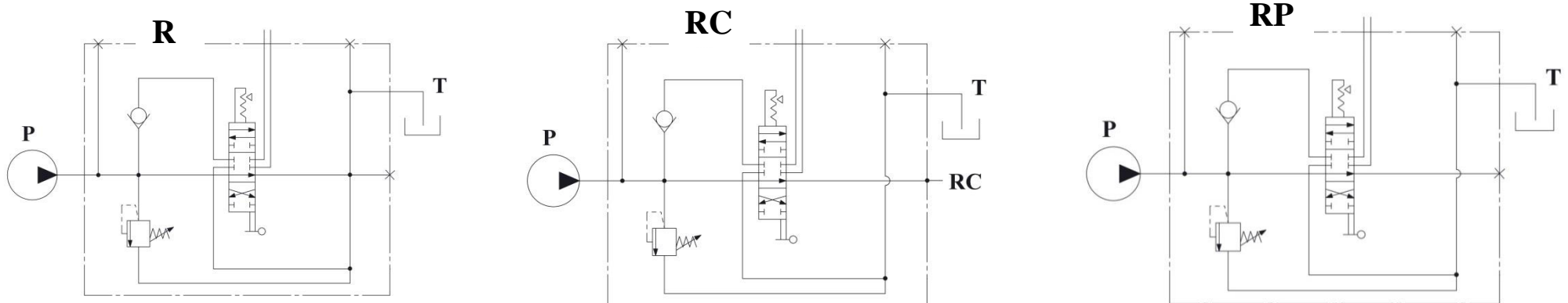
### SPOOL CONTROL 4

SPOOL CONTROL ON "A" PORT			
CODE	CONTROL SCHEME	DESCRIPTION	GENERAL DRAWING
1		2 positions; '1+2' spring, still at '2'	
2		3 positions; '1' detent, '2' spring	
3		3 positions; '1' spring, '2' detent	
4		2 positions; '2' spring	
5		2 positions; '1' spring	
6		2 positions; '1+2' spring, still at '1'	
7		3 positions; '1+2+3' detent	
8		3 positions; standard spring return	
9		2 positions; '0+1' detent	
10		2 positions; '0+2' detent	
11		2 positions; '1+2' detent	
8P		Spring-centered on/off pneumatic control Pressure 5~10 bar (72~145 psi)	
8H		Spring-centered on/off hydraulic control Pressure 6~20 bar (87~290 psi)	
8HE		Spring-centered on/off electrical hydraulic control Pressure 6~20 bar (87~290 psi)	
E		Microswitch	

### SPOOL CONTROL 5

SPOOL CONTROL ON "B" PORT			
CODE	CONTROL SCHEME	DESCRIPTION	GENERAL DRAWING
L		Standard control hand lever vertical	
L1		Standard control hand lever can be turned 180°	
L2		Standard control hand lever vertical	
L3		Standard control hand lever can be turned 180°	

### SPOOL CONTROL 6



NO.	Description	Part Number	Qty
1	Body	40108001	1
2	Ball	40108002	1
3	Spring	40108003	1
4	O-ring	40108004	1
5	Plastic plate	40108005	1
6	O-ring	40108006	1
7	Body, Cartridge	40108007	1
8	Plunger	40108008	1
9	Spring	40108009	1
10	Pressure Cap	40108010	1
11	Body	40108011	1
12	10mm adjust screw	40108012	1
13	10mm nut	40108013	1
14	Screw cap	40108014	1
15	M6x15 TAP screw	40108015	2x*P
16	Spring cap end	40108016	1x*P
17	Screw	40108017	1x*P
18	Spring cap	40108018	2x*P
19	Spring	40108019	1x*P
20	Steel ring	40108020	1x*P
21	O-ring	40108021	1x*P
22	Valve spool	40108022	1x*P
23	1/2" plastic cap	40108023	2x*P
24	Plug	40108024	3
25	3/4" BSPP plug	40108025	3
26	Control hand lever	40108026	1x*P
27	8mm nut	40108027	1x*P
28	Rubber cover	40108028	1x*P
29	3/4" Plastic cap	40108029	2
30	Stroke plunger	40108030	1x*P
31	M6x50 TAP screw	40108031	2x*P
32	Lever Cap	40108032	1x*P
33	6mm Pin	40108033	1x*P
34	1/2" Screw plug	40108034	1+1x*P

